



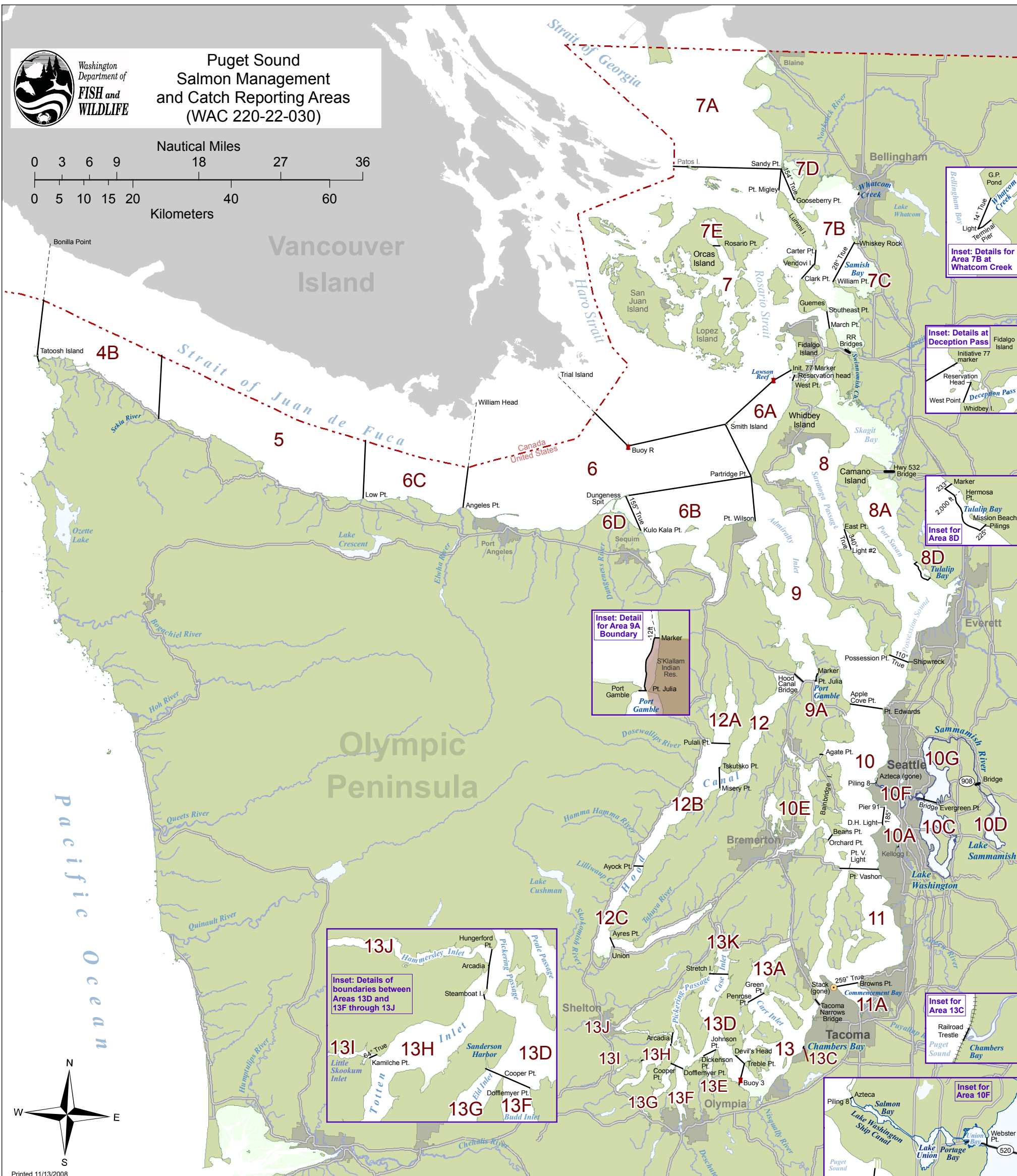
**Puget Sound
Salmon Management
and Catch Reporting Areas
(WAC 220-22-030)**

Nautical Miles

0 3 6 9 18 27 36

Kilometers

0 5 10 15 20 40 60



Printed 11/13/2008

- (1) Area 4B shall include those waters of Puget Sound easterly of a line projected from the Bonilla Point on Vancouver Island to the Tatoosh Island light, thence to the most westerly point on Cape Flattery and westerly of a line projected true north from the fishing boundary marker at the mouth of the Sekiu River.
- (2) Area 5 shall include those waters of Puget Sound easterly of a line projected from the Dungeness Spit light to the Partridge Point light and westerly of a line projected true north from Low Point.
- (3) Area 6 shall include those waters of Puget Sound easterly of a line projected from the Angeles Point Monument to the William Head light on Vancouver Island, northerly of a line projected from the Dungeness Spit light to the Partridge Point light, westerly of a line projected from the Partridge Point light to the Smith Island light, and southerly of a line projected from the Smith Island light to vessel traffic lane buoy R to the Trial Island light.
- (4) Area 6A shall include those waters of Puget Sound easterly of a line projected from the Partridge Point light to the Smith Island light to the most northeasterly of the Lawson Reef lighted buoys (RB 1 Qk Fl Bell) to Northwest Island to the Initiative 77 marker on Fidalgo Island and westerly of a line projected from Reservation Head on Fidalgo Island to West Point on Whidbey Island.
- (5) Area 6B shall include those waters of Puget Sound westerly of a line projected from the Dungeness Spit light to the Partridge Point light, westerly of a line projected from the Partridge Point light to the Point Wilson light and easterly of a line projected 155° true from Dungeness Spit light to Kulo Kala Pt.
- (6) Area 6C shall include those waters of Puget Sound easterly of a line projected true north from Low Point and westerly of a line projected from the Angeles Point Monument to the William Head light on Vancouver Island.
- (7) Area 6D shall include those waters of Puget Sound westerly of a line projected 155° true from Dungeness Spit light to Kulo Kala Pt.
- (8) Area 7 shall include those waters of Puget Sound southerly of a line projected true east-west through Sandy Point Light No. 2 (48 degrees, 47.2 minutes north latitude, 122 degrees, 42.7 minutes west longitude as per U.S. Coast Guard Light List No. 19880), northerly of a line projected from the Trial Island light to vessel traffic lane buoy R to the Smith Island light to the most northeasterly of the Lawson Reef lighted buoys (RB 1 Qk Fl Bell) to Northwest Island to the Initiative 77 marker on Fidalgo Island, and westerly of a line projected from Sandy Point Light No. 2 to Point Migley, thence along the eastern shore-line of Lummi Island to Carter Point, thence to the most northerly tip of Vendovi Island, thence to Clark Point on Guemes Island following the shoreline to Southeast Point on Guemes Island, thence to March Point on Fidalgo Island, thence to the Initiative 77 marker on Fidalgo Island and westerly of a line projected from the Smith Island light to vessel traffic lane buoy R to the Trial Island light.
- (9) Area 7A shall include those waters of Puget Sound northerly of a line projected true east-west through Sandy Point Light No. 2 (48 degrees, 47.2 minutes north latitude, 122 degrees, 42.7 minutes west longitude as per U.S. Coast Guard Light List No. 19880), terminating on the west at the international boundary and on the east at the landfall on Sandy Point.
- (10) Area 7B shall include those waters of Puget Sound westerly of a line projected 154 degrees true from Sandy Point Light No. 2 (48 degrees, 47.2 minutes north latitude, 122 degrees, 42.7 minutes west longitude as per U.S. Coast Guard Light List No. 19880), northerly of a line projected from the Partridge Point light to the Smith Island light, and southerly of a line projected from the Smith Island light to vessel traffic lane buoy R to the Trial Island light.

- (11) Area 7C shall include those waters of Puget Sound easterly of a line projected from William Point light on Samish Island 28° true to Whiskey Rock on the north shore of Samish Bay. (12) Area 7D shall include those waters of Puget Sound easterly of a line projected 154 degrees true from Sandy Point Light No. 2 (48 degrees, 47.2 minutes north latitude, 122 degrees, 42.7 minutes west longitude as per U.S. Coast Guard Light List No. 19880) to the landfall on Gooseberry Point and south of a line projected true east from Sandy Point Light No. 2 to the landfall on Sandy Point.
- (13) Area 7E shall include those waters of Puget Sound within East Sound northerly of a line projected due west from Rosario Point on Orcas Island.
- (14) Area 8 shall include those waters of Puget Sound easterly of a line projected from West Point on Whidbey Island to Reservation Head on Fidalgo Island, westerly of a line projected from the light on East Point 340° true to the light on Camano Island (Saratoga Pass light #2, Fl Red 4 Sec) southerly of the Burlington Northern railroad bridges at the north entrances to Swinomish Channel and northerly of the state highway 532 bridges between Camano Island and the mainland.
- (15) Area 8A shall include those waters of Puget Sound easterly of a line projected from the East Point light on Whidbey Island 340° true to the light on Camano Island (Saratoga Pass light #2, Fl Red 4 Sec), northerly of a line projected from the light on East Point 340° true to the shipwreck on the opposite shore, southerly of the State Highway 532 bridges between Camano Island and the mainland excluding those waters of Area 8D.
- (16) Area 8B shall include those waters of Puget Sound inside and easterly of a line projected 225 degrees, thence northerly to a point 2,000 feet off Mission Point, thence across the mouth of Tulalip Bay to a point 2,000 feet off Hermosa Point, thence northwesterly following a line 2,000 feet offshore to the intersection with a line projected 233 degrees from the fishing boundary marker on the shore at the slide north of Tulalip Bay.
- (17) Area 9 shall include those waters of Puget Sound southerly and easterly of a line projected from the Partridge Point light to the Point Wilson light, northerly of the site of the Hood Canal Floating Bridge, northerly of a line projected true west from the shoreward end of the Port Gamble tidal dock on Point Julia to the mainland in the community of Port Gamble, excluding those on-reservation waters of Hood Canal north of Port Gamble Bay to the marker at the north end of the Port Gamble Indian Reservation, southerly of a line projected from the southern tip of Possession Point 110° true to the shipwreck on the opposite shore and northerly of a line projected from the Apple Cove Point light to the light at the south end of the Edmond's breakwater at Edwards Point.
- (18) Area 9A shall include those waters of Puget Sound known as Port Gamble Bay and those on-reservation waters of Hood Canal north of Port Gamble Bay to the marker at the north end of the Port Gamble Indian Reservation.

- (19) Area 10 shall include those waters of Puget Sound southerly of a line projected from the Apple Cove Point light to the light at the south end of the Edmond's breakwater at Edwards Point, westerly of a line projected 233° true from the Azteca Restaurant near Shishole Marina through entrance piling No. 8 to the southern shore of the entrance to the Lake Washington Ship Canal, westerly of a line projected 185° true from the southwest corner of Pier 91 through the Duwamish Head light to Duwamish Head, northerly of a true east-west line passing through the Point Vashon light, easterly of a line projected from Orchard Point to Beans Point on Bainbridge Island, and northerly and easterly of a line projected true west from Agate Point on Bainbridge Island to the mainland.
- (20) Area 10A shall include those waters of Puget Sound easterly of a line projected 185° true from the southwest corner of Pier 91 through the Duwamish Head light to Duwamish Head.
- (21) Area 10C shall include those waters of Lake Washington southerly of the Evergreen Point Floating Bridge.
- (22) Area 10D shall include those waters of the Sammamish River south of the State Highway 908 Bridge and Lake Sammamish.
- (23) Area 10E shall include those waters of Puget Sound westerly of a line projected from Orchard Point to Beans Point on Bainbridge Island and southerly and westerly of a line projected true west from Agate Point on Bainbridge Island to the mainland.
- (24) Area 10F shall include those waters of Puget Sound easterly of a line projected 233° true from the Azteca Restaurant near Shishole Marina through entrance piling No. 8 to the southern shore of the entrance to the Lake Washington Ship Canal and those waters of the Lake Washington Ship Canal westerly of a line projected from Webster Point true south to the Evergreen Point Floating Bridge including the waters of Salmon Bay, the Lake Washington Ship Canal, Lake Union and Portage Bay.
- (25) Area 10G shall include those waters of Lake Washington northerly of the Evergreen Point Floating Bridge, easterly of a line projected from Webster Point true south to the Evergreen Point Floating Bridge and those waters of the Sammamish River north of the State Highway 908 Bridge.
- (26) Area 11 shall include those waters of Puget Sound southerly of a true east-west line passing through the Point Vashon light, northerly of a line projected 259 degrees true from Browns Point to the land fall in line with the site of Asarco smelter stack on the opposite shore of Commencement Bay, and northerly of the Tacoma Narrows Bridge.
- (27) Area 11A shall include those waters of Puget Sound southerly of a line projected 259 degrees true from Browns Point to the land fall in line with the site of Asarco smelter stack on the opposite shore of Commencement Bay.
- (28) Area 12 shall include those waters of Puget Sound southerly of the site of the Hood Canal Floating Bridge and northerly and easterly of a line projected from Pulali Point true east to the mainland, and westerly of a line projected from Aycock Point true east to the mainland, and westerly of a line projected from Aycock Point true east to the mainland, and westerly of a line projected from the Tskutsko Point light to Misery Point.
- (29) Area 12A shall include those waters of Puget Sound northerly of a line projected from Pulali Point true east to the mainland.
- (30) Area 12B shall include those waters of Puget Sound southerly of a line projected from Aycock Point true east to the mainland, and westerly of a line projected from the Tskutsko Point light to Misery Point.
- (31) Area 12C shall include those waters of Puget Sound southerly of a line

- projected from Aycock Point true east to the mainland and northerly and westerly of a line projected from Ayres Point to the public boat ramp at Union.
 - (32) Area 12D shall include those waters of Puget Sound easterly of a line projected from Ayres Point to the public boat ramp at Union.
 - (33) Area 13 shall include those waters of Puget Sound southerly of the Tacoma Narrows Bridge and a line projected from Green Point to Penrose Point and northerly and easterly of a line projected from the Devil's Head light to Treble Point, thence through lighted buoy No. 3 to the mainland and westerly of the railroad trestle at the mouth of Chambers Bay.
 - (34) Area 13A shall include those waters of Puget Sound northerly of a line projected from Green Point to Penrose Point.
 - (35) Area 13C shall include those waters of Puget Sound easterly of the railroad trestle at the mouth of Chambers Bay.
 - (36) Area 13D shall include those waters of Puget Sound westerly of a line projected from the Devil's Head light to Treble Point, thence through lighted buoy Number 3 to the mainland, northerly of a line projected from Johnson Point to Cooper Point, easterly of a line projected from Cooper Point to the southeastern shore of Sanderson Harbor, easterly of a line projected from the northern tip of Steamboat Island to the light at Arcadia to Hungerford Point and southerly of a line projected true east-west through the southern tip of Stretch Island.
 - (37) Area 13E shall include those waters of Puget Sound southerly of a line projected from Johnson Point to Dickenson Point.
 - (38) Area 13F shall include those waters of Puget Sound southerly of a line projected from the light at Dofflemeyer Point to Cooper Point.
 - (39) Area 13G shall include those waters of Puget Sound southerly of a line projected from Cooper Point to the southeastern shore of Sanderson Harbor.
 - (40) Area 13H shall include those waters of Puget Sound southwesterly of a line projected from the northern tip of Steamboat Island to the light at Arcadia and those waters easterly of a line projected 64° true from Kamliche Point to the opposite shore.
 - (41) Area 13I shall include those waters of Puget Sound southwesterly of a line projected 64° true from Kamliche Point to the opposite shore.
 - (42) Area 13J shall include those waters of Puget Sound northwesterly of a line projected from the light at Arcadia to Hungerford Point.
 - (43) Area 13K shall include those waters of Puget Sound northerly of a line projected true east-west through the southern tip of Stretch Island.
- [Statutory Authority: RCW 75.08.080, 95-13-056 (Order 95-75), § 220-22-030, filed 6/16/95, effective 7/17/95; 94-15-001 (Order 94-62), § 220-22-030, filed 7/6/94, effective 8/6/94; 90-13-025 (Order 90-49), § 220-22-030, filed 6/11/90, effective 7/12/90; 89-13-004 (Order 89-44), § 220-22-030, filed 6/8/89; 88-14-133 (Order 88-48), § 220-22-030, filed 7/6/88; 87-15-059 (Order 87-72), § 220-22-030, filed 7/14/87; 85-13-032 (Order 85-60), § 220-22-030, filed 6/12/85; 84-13-078 (Order 84-53), § 220-22-030, filed 6/21/84; 82-15-040 (Order 82-83), § 220-22-030, filed 7/15/82; 81-18-017 (Order 81-101), § 220-22-030, filed 8/25/81; 80-04-070 (Order 80-17), § 220-22-030, filed 3/26/80; 79-07-045 (Order 79-42), § 220-22-030, filed 6/22/79; 78-05-018 (Order 78-16), § 220-22-030, filed 4/13/78; Order 77-66, § 220-22-030, filed 8/5/77; Order 77-14, § 220-22-030, filed 4/15/77; Order 76-35, § 220-22-030, filed 5/11/76.]