

# Agenda Item # 4

## Land Transactions

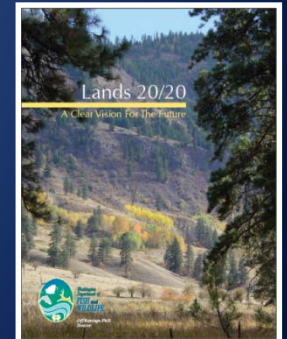
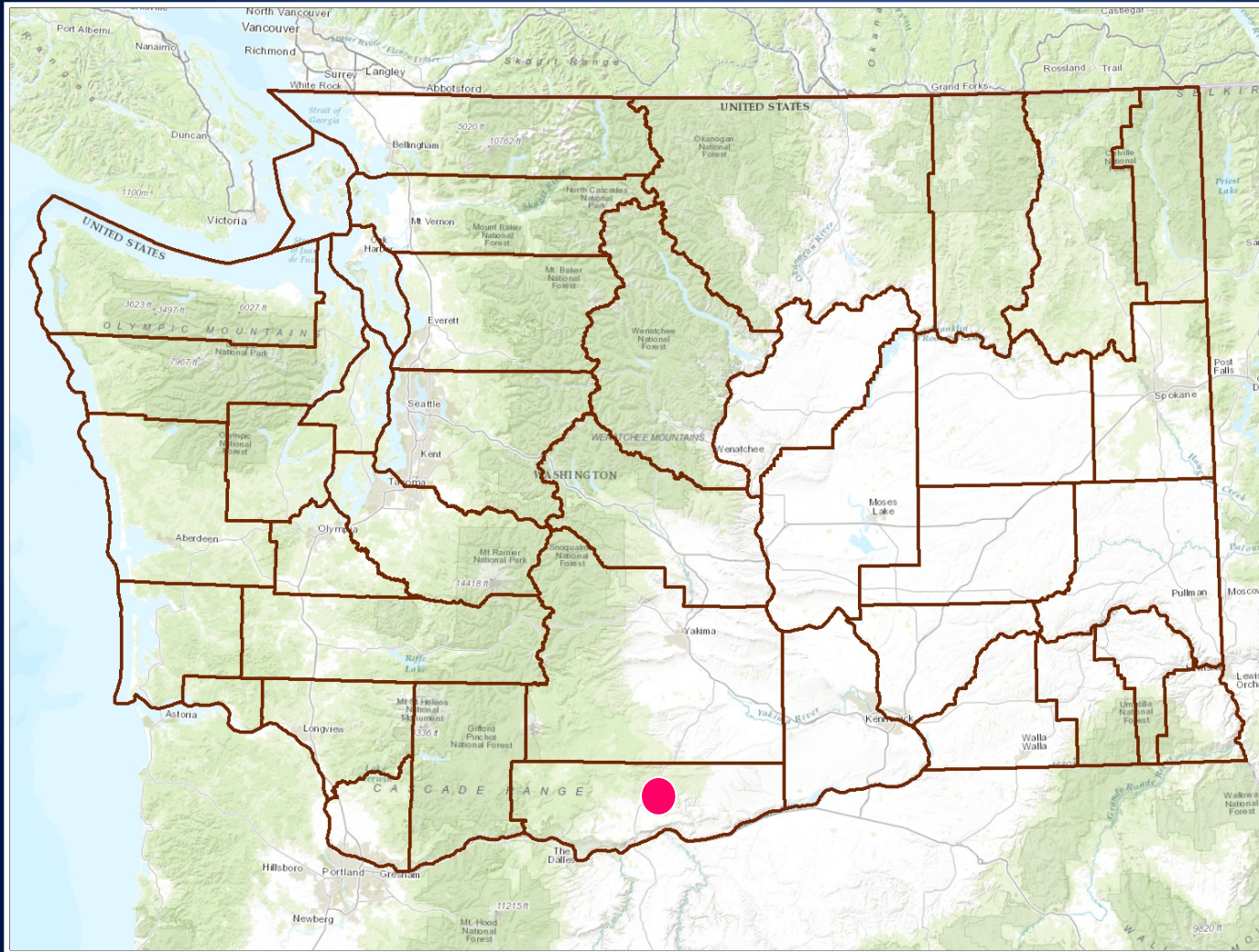


*Washington Department of*  
**FISH and WILDLIFE**

Julie Sandberg  
Real Estate Services Manager, Lands Division  
Wildlife Program

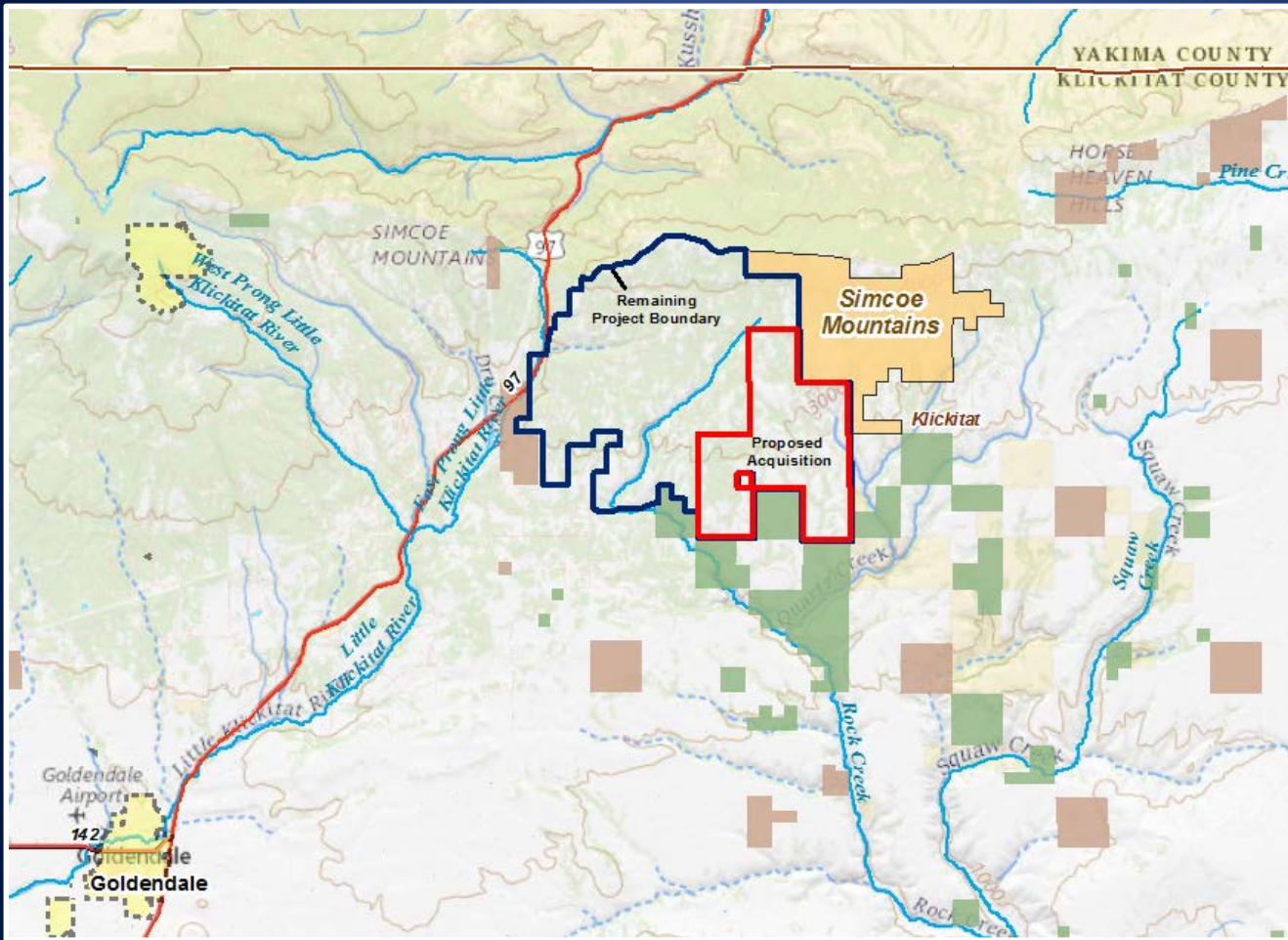
# Simcoe Phase 5 Property

## Klickitat WLA, Klickitat County



# Simcoe Phase 5 Property

## Klickitat WLA, Klickitat County

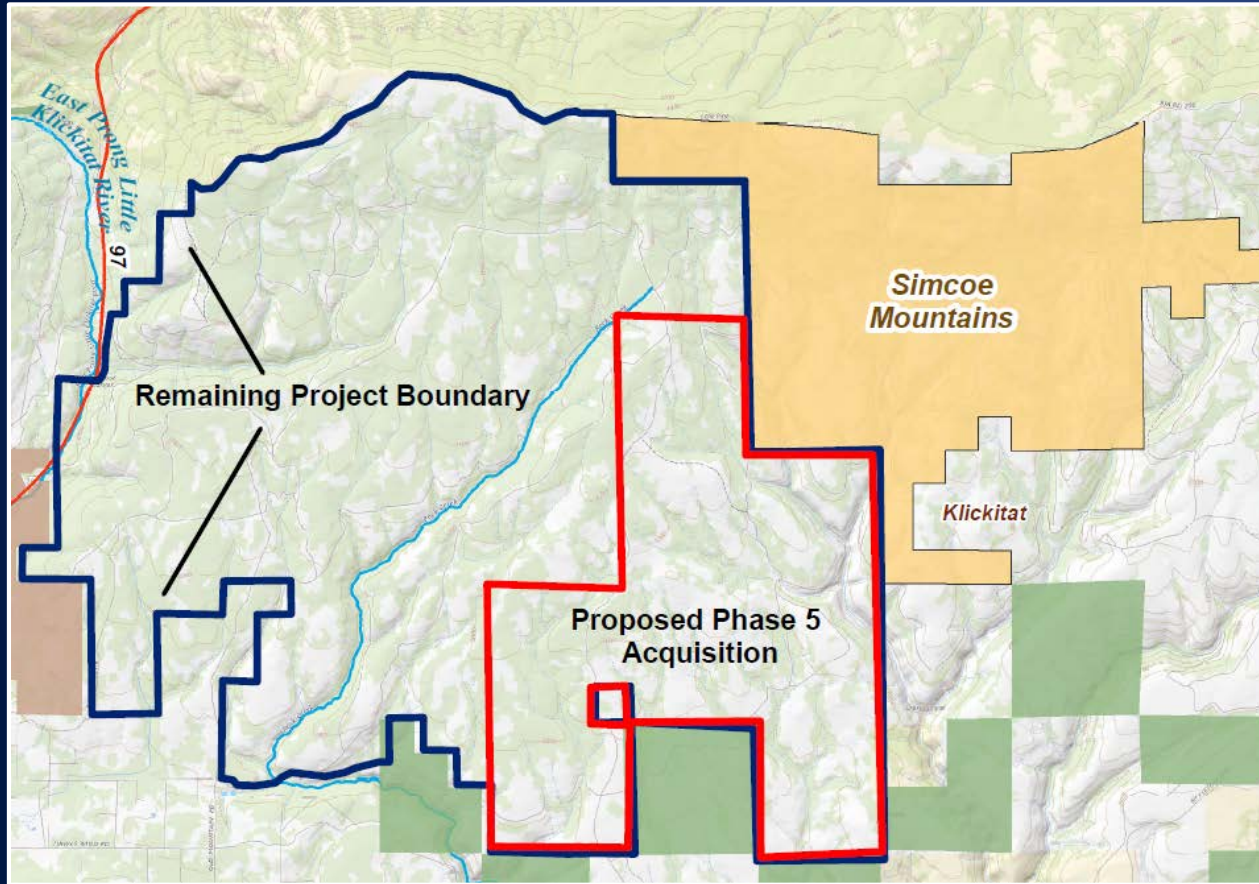


5,088 +/- acres



# Simcoe Phase 5 Property

## Klickitat WLA, Klickitat County



Appraised Value  
\$3,353,000

Operations &  
Maintenance  
anticipated to be  
\$52/acre

# Simcoe Phase 5 Property

Klickitat WLA, Klickitat County

## Working Lands Partnership

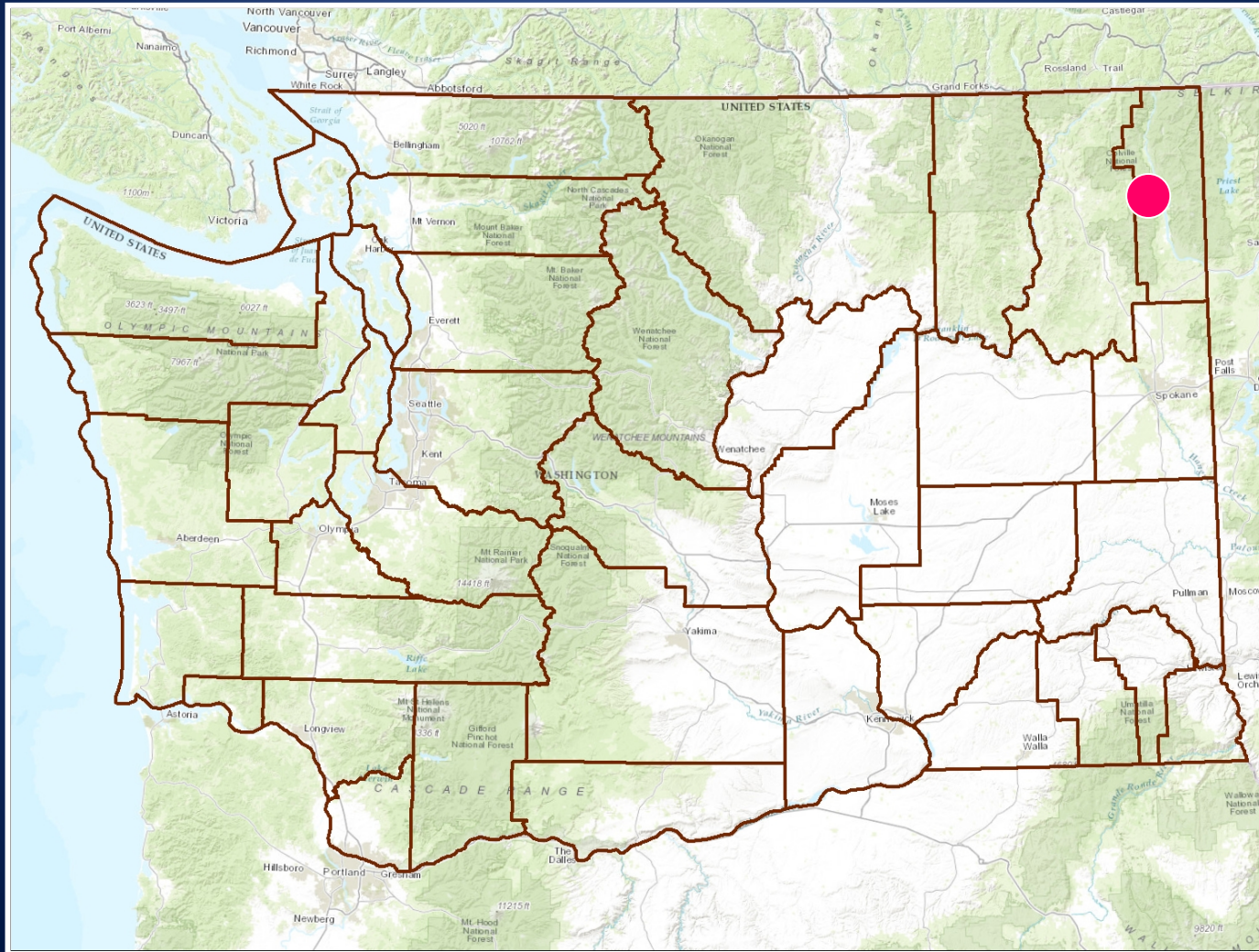
Eastern Klickitat Conservation District

Central Klickitat Conservation District



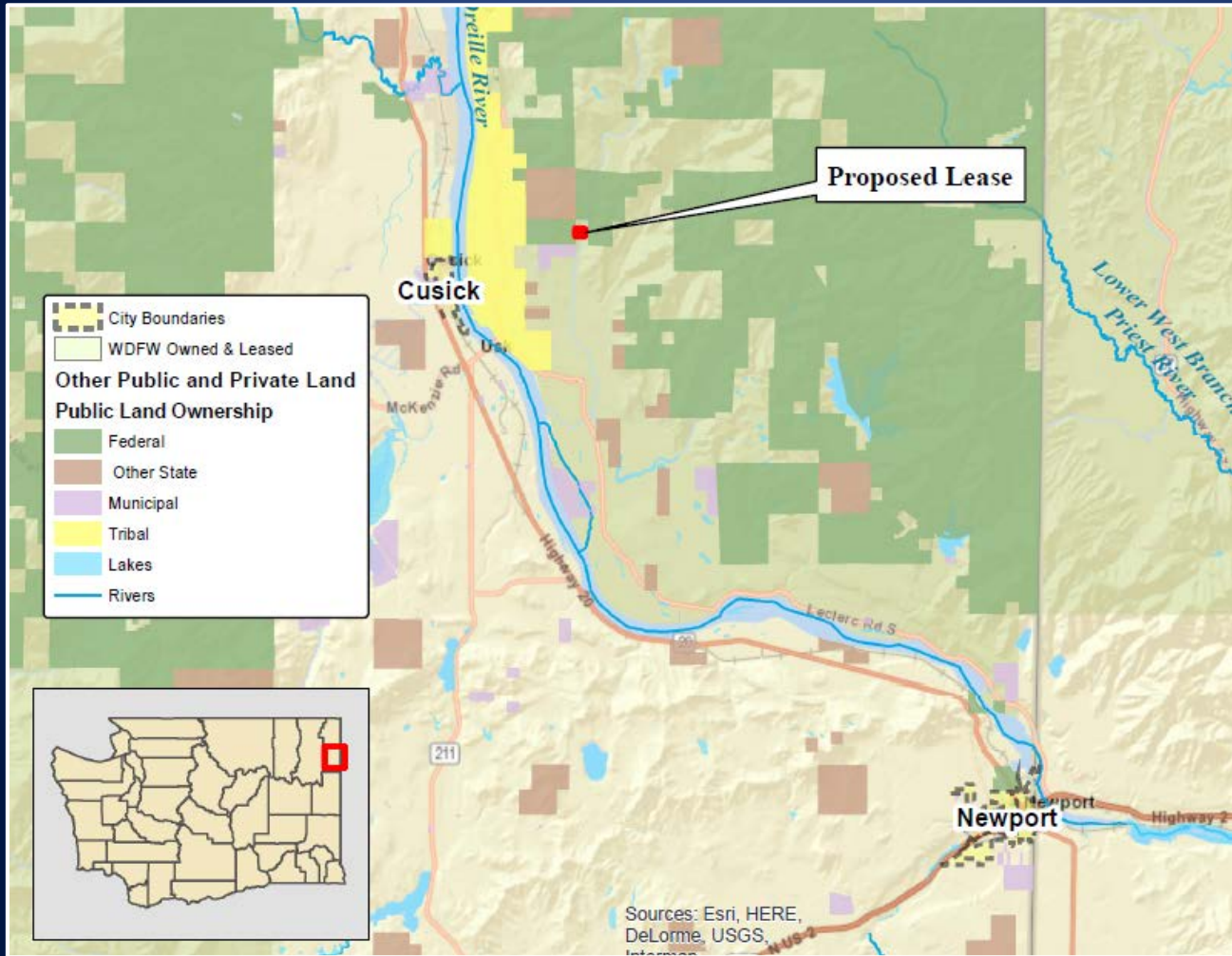
# Usk Hatchery Lease

## Pend Oreille County



# Usk Hatchery Lease

## Pend Oreille County



Lease of  
15 Acres



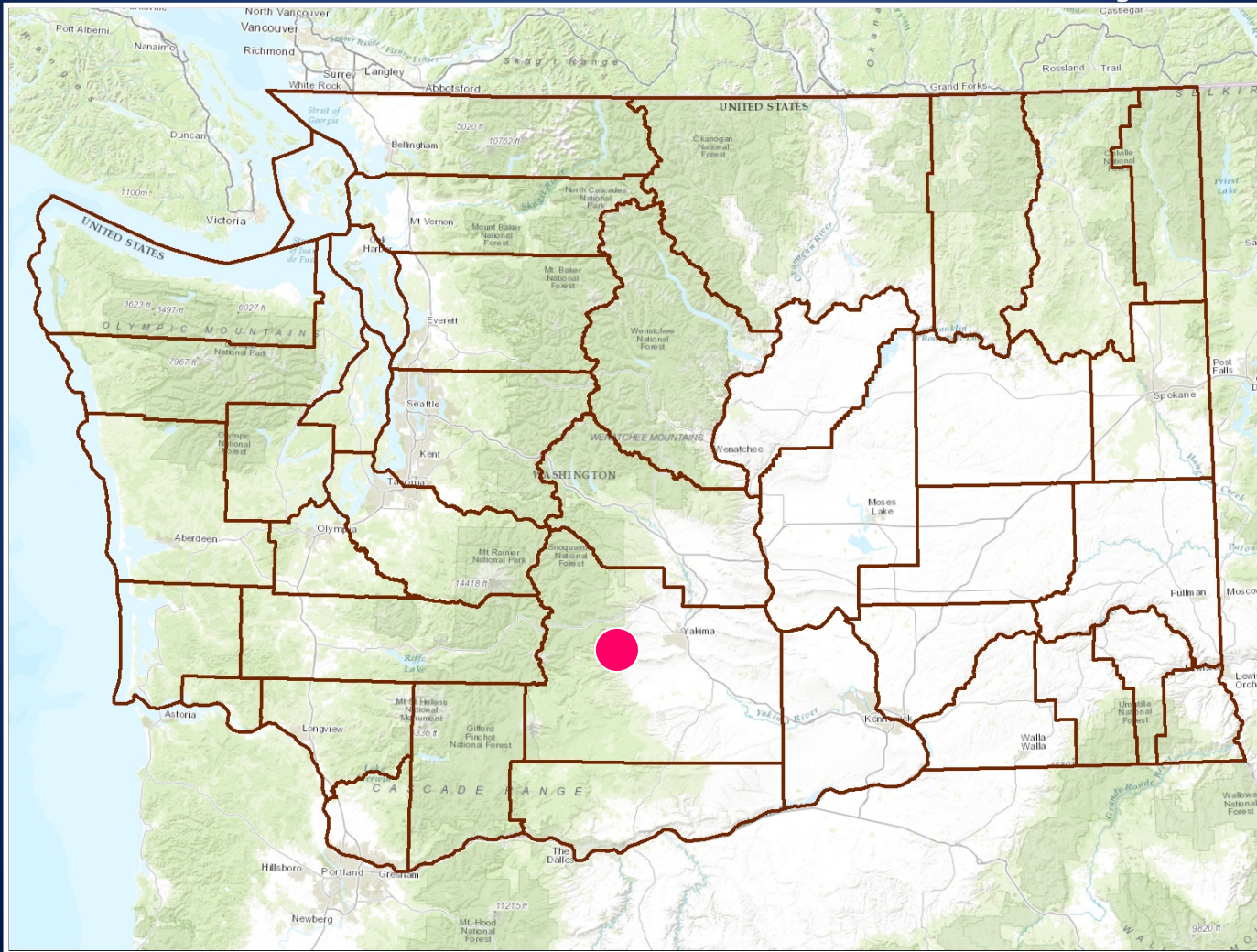
# Usk Hatchery Lease

## Pend Oreille County

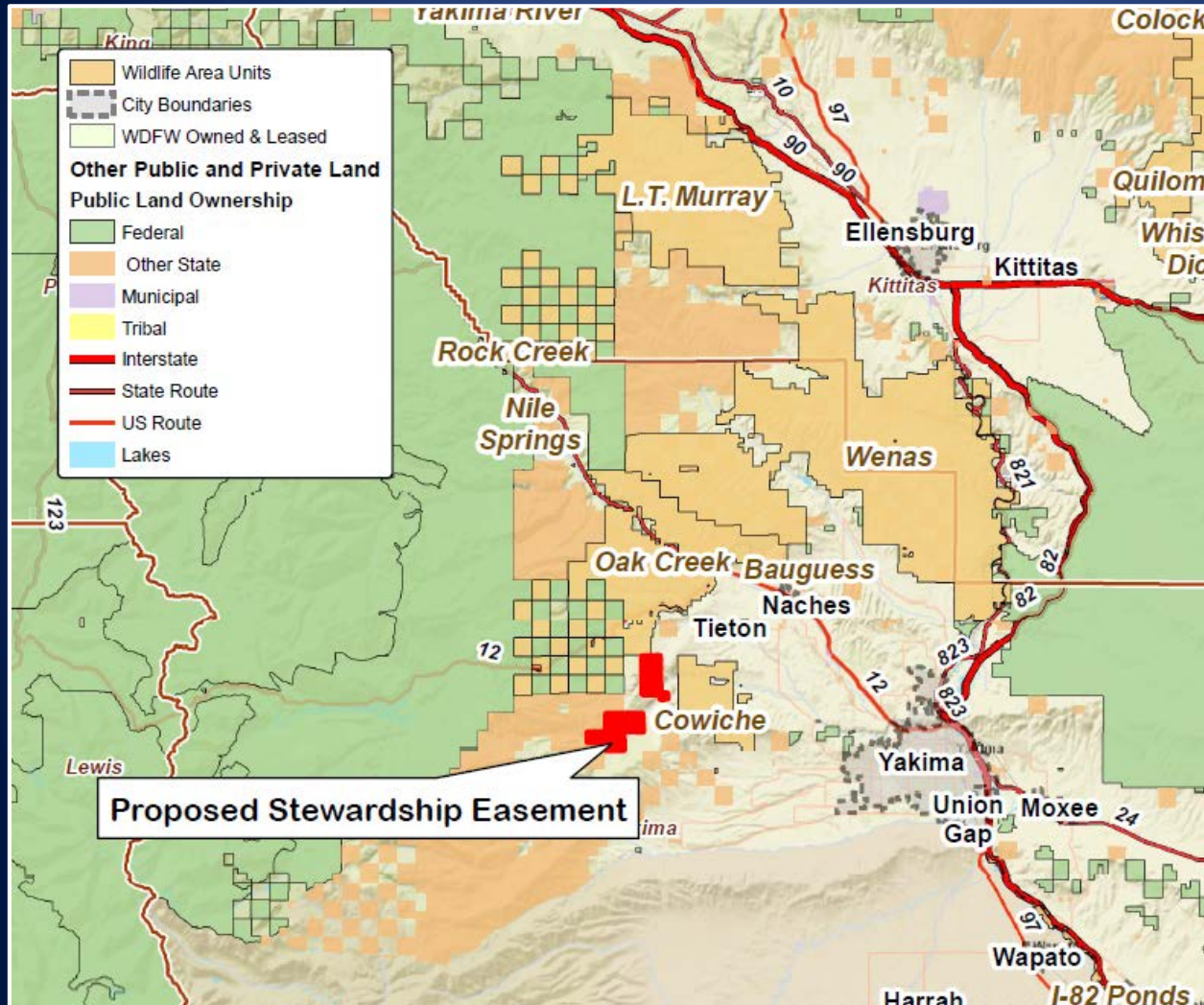




# Cowiche Van Wyk Stewardship Easement Oak Creek WLA, Yakima County



# Cowiche Van Wyk Stewardship Easement Oak Creek WLA, Yakima County

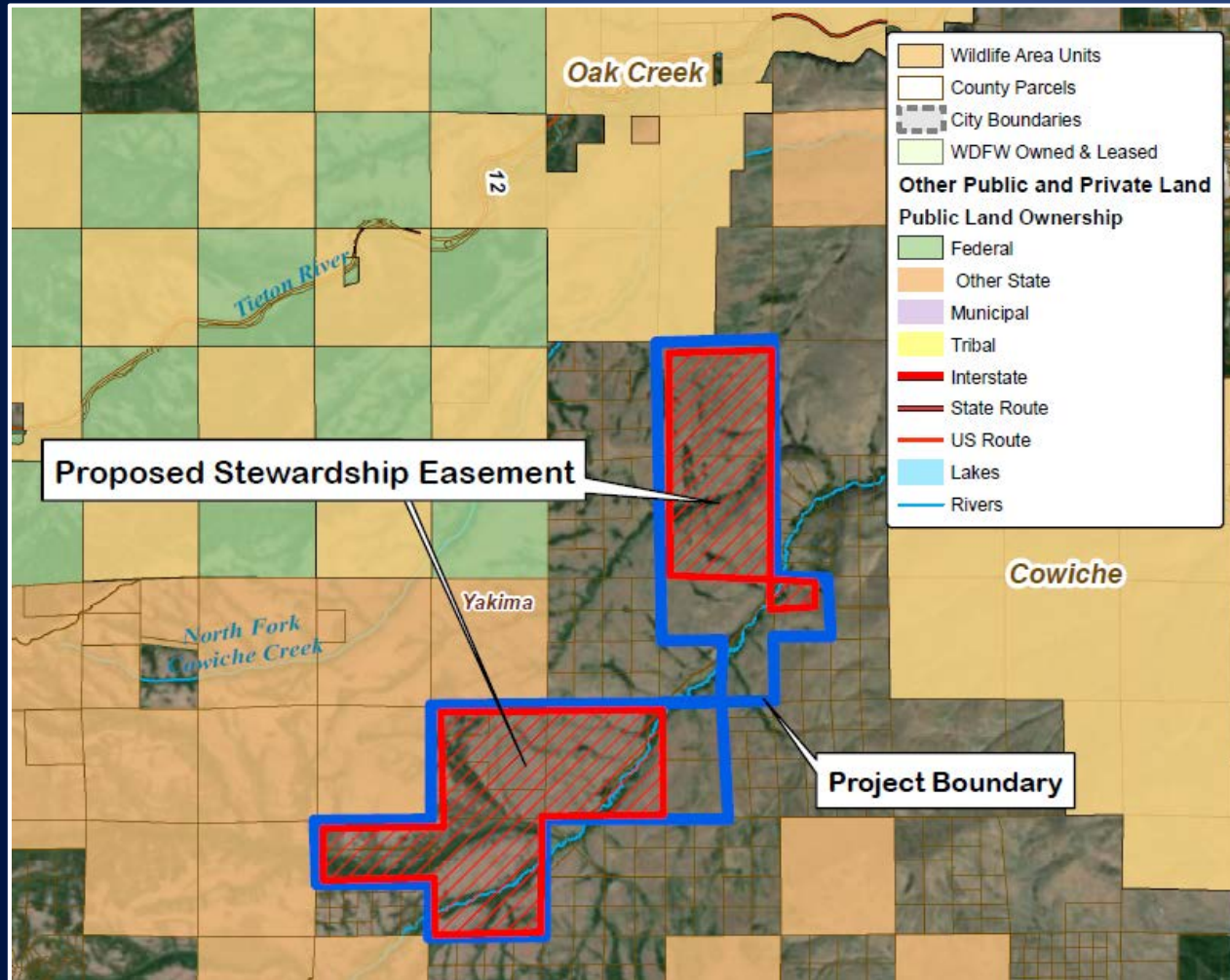


3,555 +/- acres



# Cowiche Van Wyk Stewardship Easement

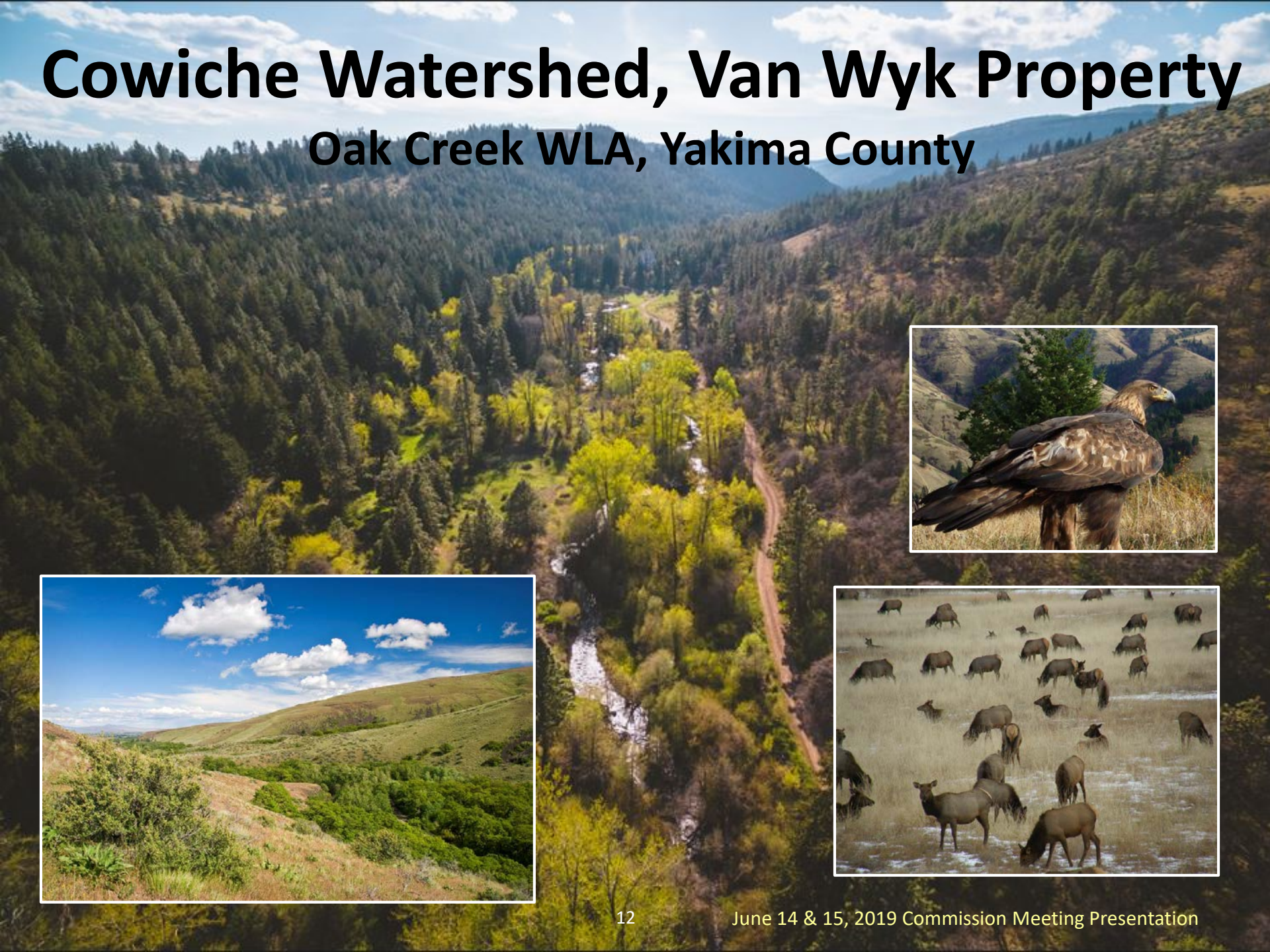
## Oak Creek WLA, Yakima County



**FORTERRA**

# Cowiche Watershed, Van Wyk Property

## Oak Creek WLA, Yakima County



A large, spreading tree with a thick, gnarled trunk and a wide canopy of green leaves stands in a field of tall grass. The sky is bright blue with scattered white clouds. The text "Land Transaction Questions?" is overlaid in white on a semi-transparent blue banner across the middle of the image.

# Land Transaction Questions?