

# Blue Sheet

## Pollinator Projects and Backyard Sanctuaries— Briefing



Taylor Cotten  
Diversity Division,  
Wildlife Program

Jeff Davis  
Director of  
Conservation Policy

Erin Sullivan & Katie Remine,  
Woodland Park Zoo

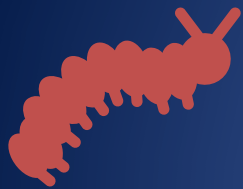
*Washington Department of*  
**FISH and WILDLIFE**

# Background and Importance of Backyard Wildlife Habitat - People

- > 80% of Washingtonians:
  - Have interest in continuing and/or increasing their **wildlife watching** participation.
  - Enjoy **wildlife around their homes**.
- Most adults feel:
  - Exposure to nature promoted their physical, psychological, and social wellbeing.
  - However, felt their backyards are "manufactured" and "not natural", and therefore not considered nature.



# Background and Importance of Backyard Wildlife Habitat – Pollinator Conservation



## Pollinators

Among bumble bees, 28% of species in North America are considered threatened.

19% of butterflies in the US and Canada are at risk of extinction according to NatureServe.



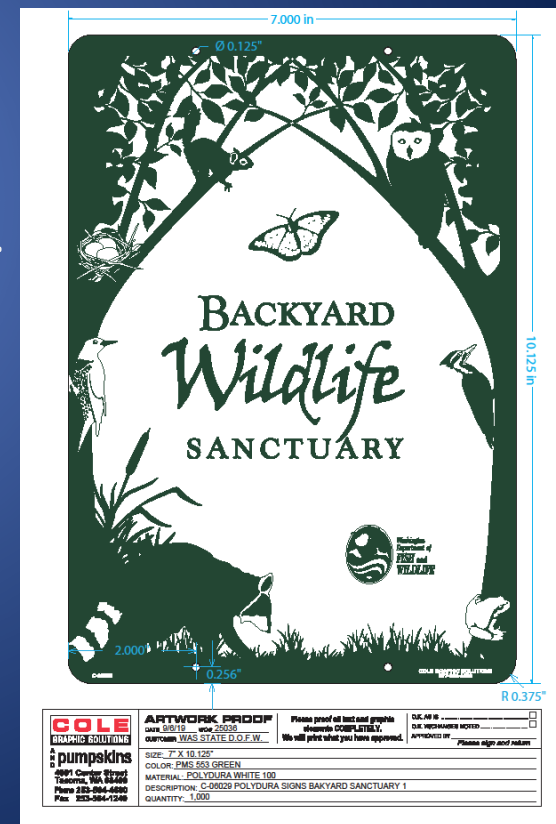
## Habitat

Collections of small scale habitat are significant for invertebrate species.

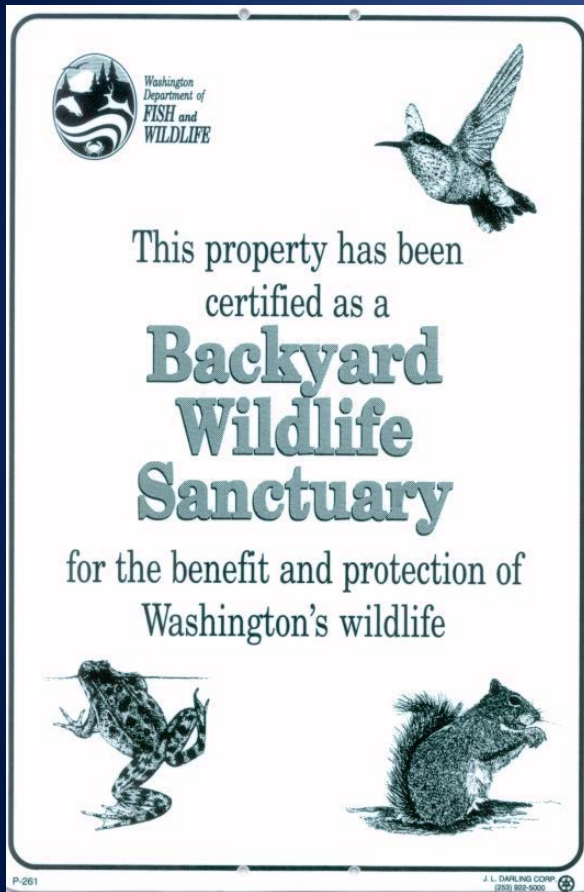
Urban areas have demonstrated higher bee diversity than other “converted” habitat.

# Backyard Wildlife Sanctuary Program

- Backyard Wildlife Sanctuary Designation.
- Mimic's similar program run by National Wildlife Federation.
- First enrollee in 1985.
- Led out of Region 1 and Region 4 until moved to HQ in 2015.
- Provide general backyard habitat information collected as well as contact information.



# Backyard Sanctuary Continued...



- Over 7,000 individuals have participated.
- \$10 fee provides certificate, yard sign, and newsletter(2018).
- Funds primarily support sign production.
- Average ~2 applications a week .

# Backyard pollinator habitat BMPs, Xerces Society

- Rely on partners and available resources for pollinator best management practices.
  - Landscaping for Wildlife book published in 1999 in association with Washington Department of Fish and Wildlife.
  - Xerces Society recommendations.



# Xerces, Bumble Bee Atlas (public education)

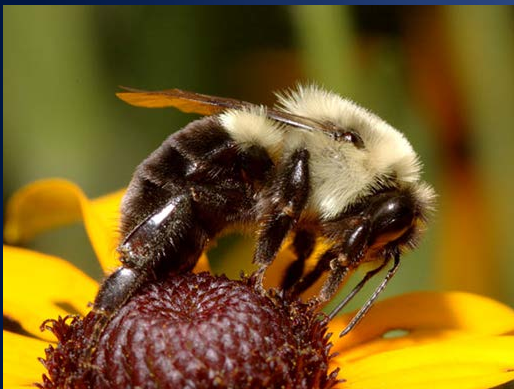
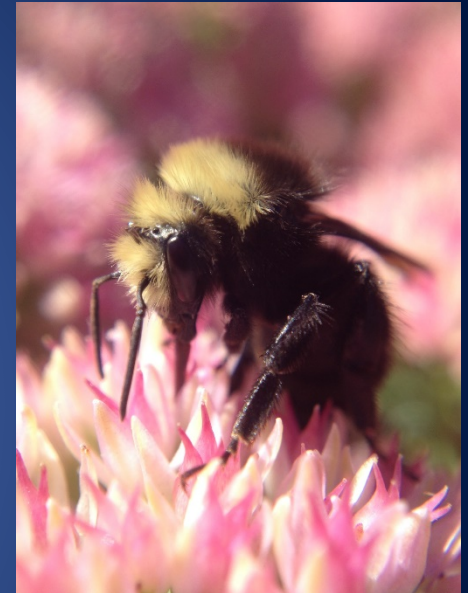
- Partners with neighboring states.
- Volunteer led effort to document bumble bees statewide.
- Over 2,500 volunteers submitted bumble bee observations in 2019 for WA.
- Demonstrated interest for pollinator conservation.
- Small pieces of habitat can make a difference.



PACIFIC NORTHWEST  
BUMBLE BEE ATLAS

# Woodland Park Zoo

A diversity of native pollinators:

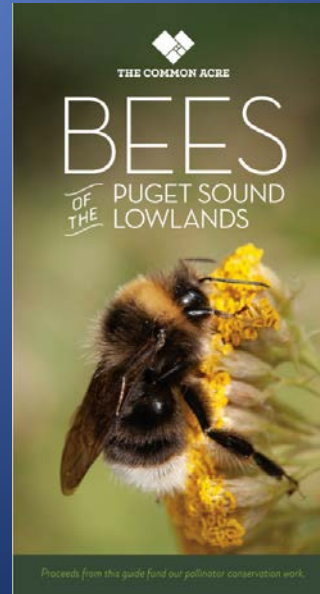
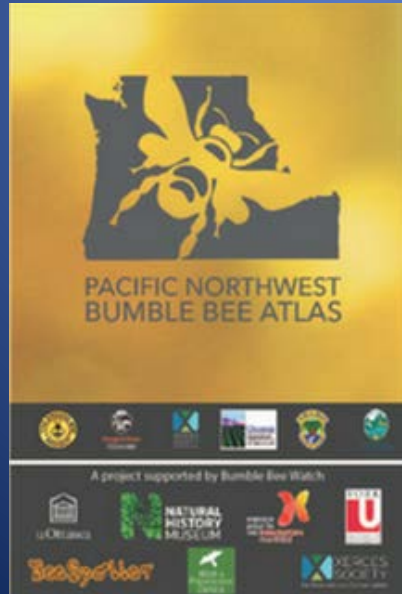


Information is subject to changes and amendments over time.

February 7-8, 2020 WDFW Commission Meeting Presentation



# Pollinator Conservation- in the region and Woodland Park Zoo



# What Woodland Park Zoo aims to do for pollinators:

- Open peoples' eyes to the diversity of pollinators we live with and depend on.
  - Cultivate an informed and observant band of community scientists logging pollinator observations in urban-to-rural landscapes.
- Facilitate actions to increase habitat for pollinators, and reduce the use of chemicals on the landscape.
- Collaborate and partner to extend the impact of our efforts.



# Potential initiatives and projects we are exploring:

- Re-engage with Backyard Sanctuary enrollees.
- Tiered backyard certification program.
  - Update the sign-up process and criteria.
- Engage in neighborhoods and HOAs to help jointly build habitat, and create incentives around maintaining habitat.
- Promote the sanctuary program.
- Work closely with partners, including Woodland Park Zoo and Xerces Society.

# Questions?