

# Willapa Bay Salmon Management Policy C-3622

Chad Herring  
Anadromous Resource Policy Analyst



# Presentation Outline

- Policy C-3622 Comprehensive Review Document
- Items for possible policy revisions

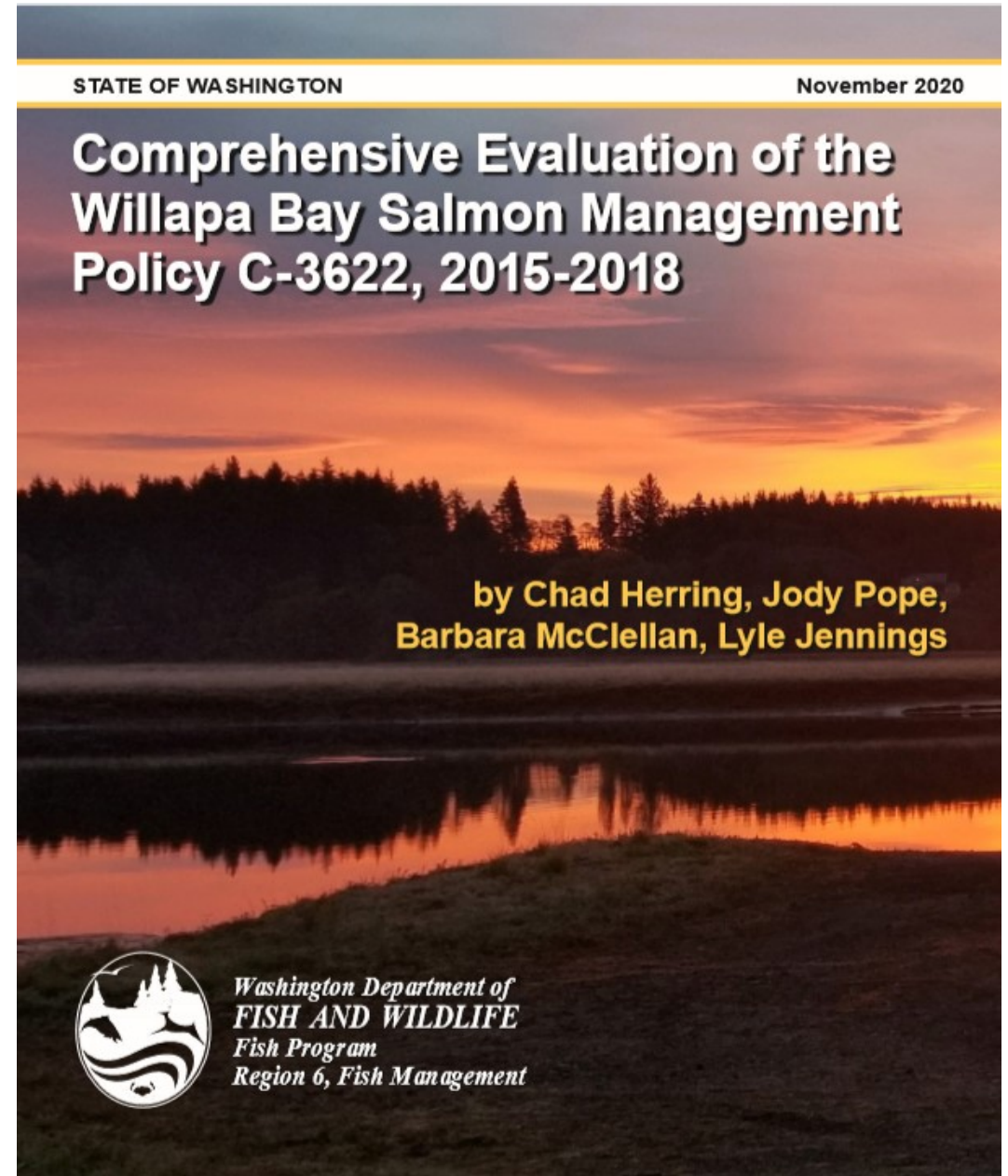




# **Policy C-3622 Comprehensive Review Document**

# Policy C-3622 Comprehensive Review Document

- Draft document submitted in August of 2020
- Public meeting held by webinar on August 18, 2020
- September presentation to FWC
  - Additional language requested
  - Executive summary, conclusions
  - Purpose and objectives
- October briefing
  - Public comments added to appendices
  - <https://wdfw.wa.gov/about/commission/willapa-bay-policy-review>



# Public Comments

- Press release on Sept. 16 – Oct. 12
- “Should policy be modified?”
- “What sort of modifications are needed?”
  - 19 comments submitted
    - Recreational fishers
      - » Forks Creek hatchery production
    - Twin Harbors Advocacy
    - Commercial advisors
    - Salmon for All
    - Pacific County Commissioners





# Items for Possible Policy Revisions

# Public Comments on Policy C-3622

- The policy has ruined current sport and commercial fisheries
- Eliminate commercial gillnets use in Willapa Bay
- Increase hatchery production to return to old fish numbers
- Percentage based harvesting by applying and removing limits
- Stop distinguishing between hatchery fish and wild fish. There is no differences in genetics based on WDFW study
- Lack of collaboration on the Willapa Policy with advisors outside WDFW
- Commercial opportunity is not economically feasible
- Policy was never fully implemented
- Payback was never implemented when harvest rate was exceeded
- Can the North River protection be made permanent
- Abandon current C-3622 policy
- Don't shift Forks Creek egg production to Nemah and Naselle
- No clear metrics for hatchery reform
- Pre-policy pHOS numbers were due to hatchery operations
- Differences in NOR:HOR ratios in fisheries vs spawning grounds
- More education with FWC regarding how habitat restoration works in WA. There is confusion on whose job duty it is.
- Maximize hatchery production at all facilities
- Eliminate harvest priorities for specific fishery sectors
- Survival of Chinook is poor in Naselle and Nemah rivers



# Hatchery Management

- **Population Designations for Chinook**
  - Measure of the biological significance of a population to the recovery of the ESU
  - Willapa River/North River-Primary; Naselle River-Contributing
  - Policy decisions
  - Paradigm shift from previous management plan





# Hatchery Management

- **Hatchery Production Levels**

- Based on achieving metrics associated with the population designation
- Reduced production in northern portion of the bay
  - Marine area recreational and commercial fisheries
- Guidance modifications
  - 2016 BY – Legislative proviso
    - 2.5M @ Naselle Hatchery
  - 2019 BY – Commission action
    - 2.2M @ Forks Creek Hatchery
  - 2020 BY – Prey availability; SRKW
    - Addt'l 2.5M @ Naselle Hatchery

- **Possible Consideration**

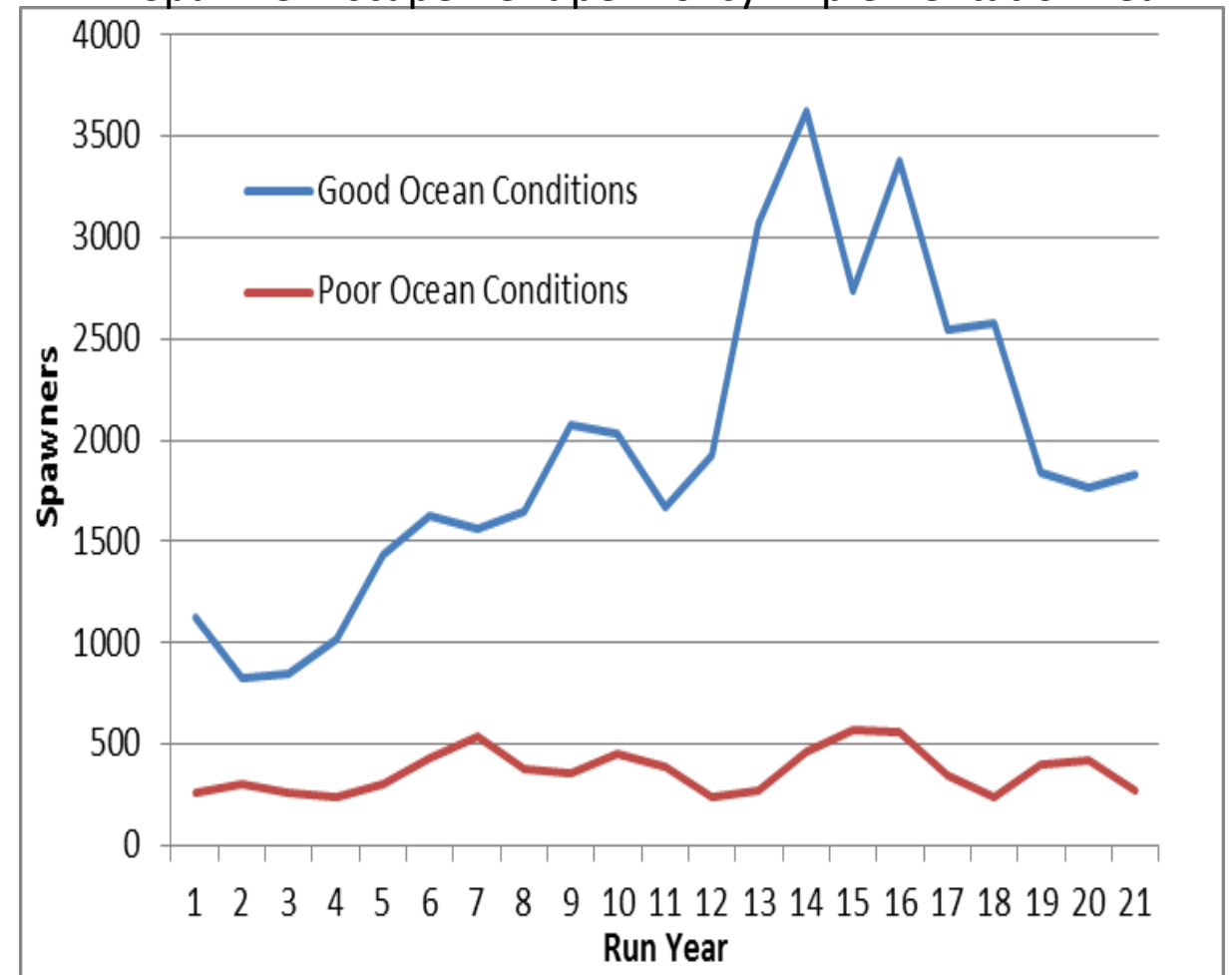
- Hatchery Reform Policy C-3619
  - » Statewide consistency
  - » Designation of programs
  - » HGMP development for non-ESA listed stocks
  - » Analysis of risks and benefits
  - » Monitoring and evaluation



# Fisheries Management

- **Rebuilding Timeframe**
  - Policy actions intended to meet management objectives in 16-21 years
  - Developed from public feedback
  - AHA model used in development of harvest control rules
    - 20% Phase One
    - 14% Phase Two
    - 100 years out – 25 generations
    - No new informative data
    - Better understanding of river specific harvest/impact rates
    - Cannot predict environmental conditions
    - Adaptive management necessary given uncertainty

Estimates of Naselle River Fall Chinook Natural Origin Spawner Escapement per Policy Implementation Year



# Fisheries Management

- **Species Harvest Prioritization**

- Chinook for recreational sector; coho and chum for commercial sector
- Only allows for harvest if impacts remain
- Mixed stock fisheries
- Area and time restrictions for commercial fisheries
- Very little access to Chinook
- Coho run sizes highly variable
- Development of fishery management tools
  - Runsize update model for Chinook based on commercial fisheries





# Questions