

# Forest Management Project Approval Requests for 2021



*Washington Department of*  
**FISH and WILDLIFE**

Richard Tveten  
Forest Management Team Lead, Lands Division  
Wildlife Program

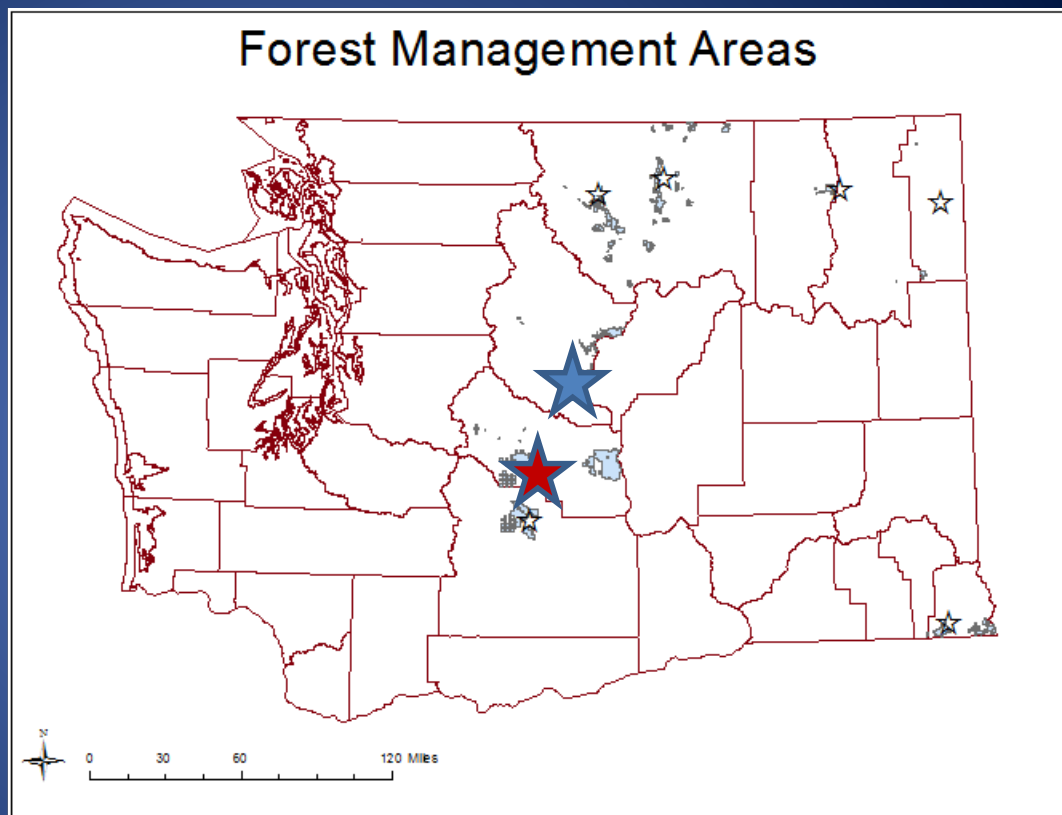
# Commission Approval Requests

- Chelan Wildlife Area – Burch Mountain/Swakane
  - Up to 3 million board feet
  - Up to 750 acres
  - About 3/4 truck load per acre
  - Leave 20-40 of the best trees per acre
- LT Murray – Upper Robinson
  - Up to 1.2 million board feet
  - 390 acres
  - Little over 1/2 truck load per acre
  - Leave 25-35 of the best trees per acre

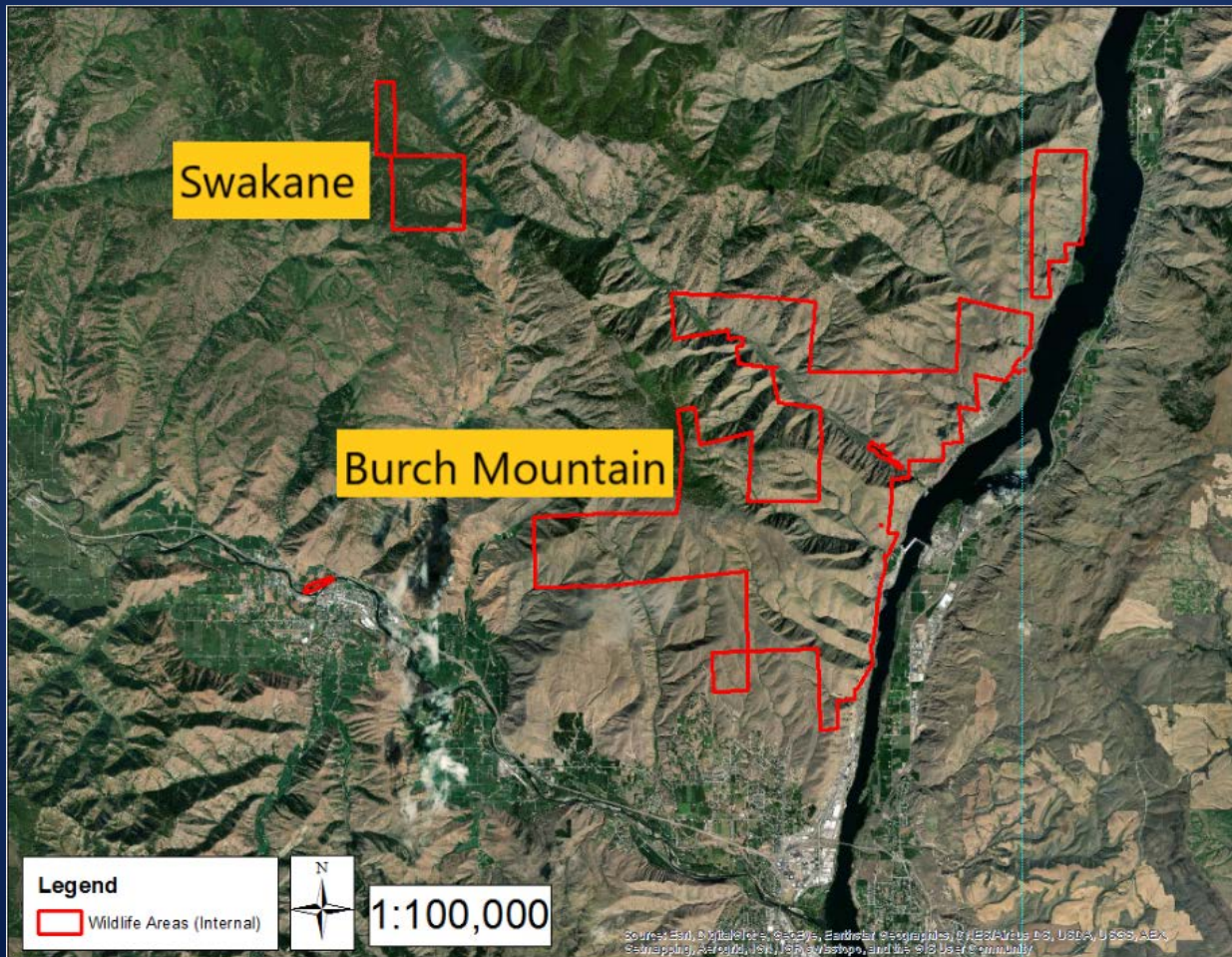
# 2020 Thinning Project >1,000,000 board feet

★ Burch Mtn./Swakane

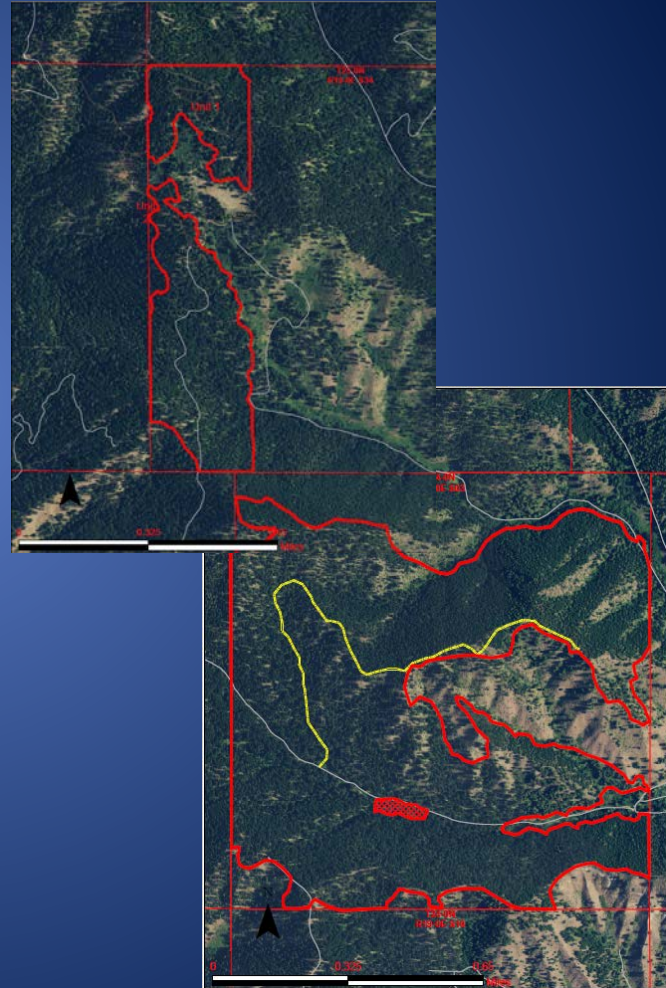
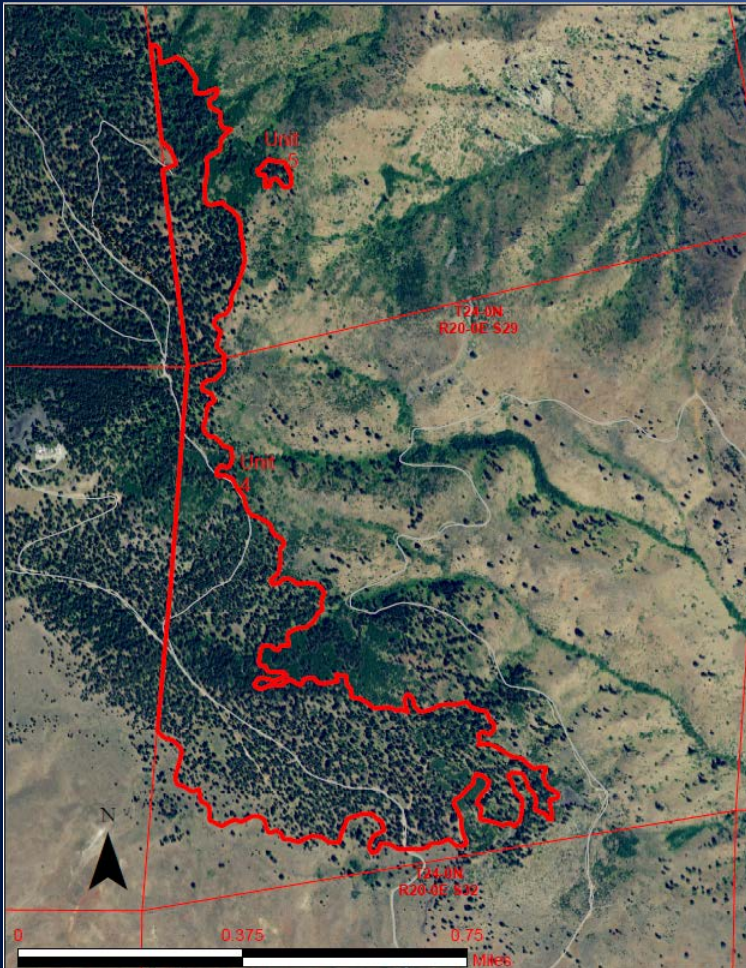
★ Upper Robinson



# Burch Mountain/Swakane (Chelan County)



# Burch Mountain/Swakane



# Desired Changes

Current Condition



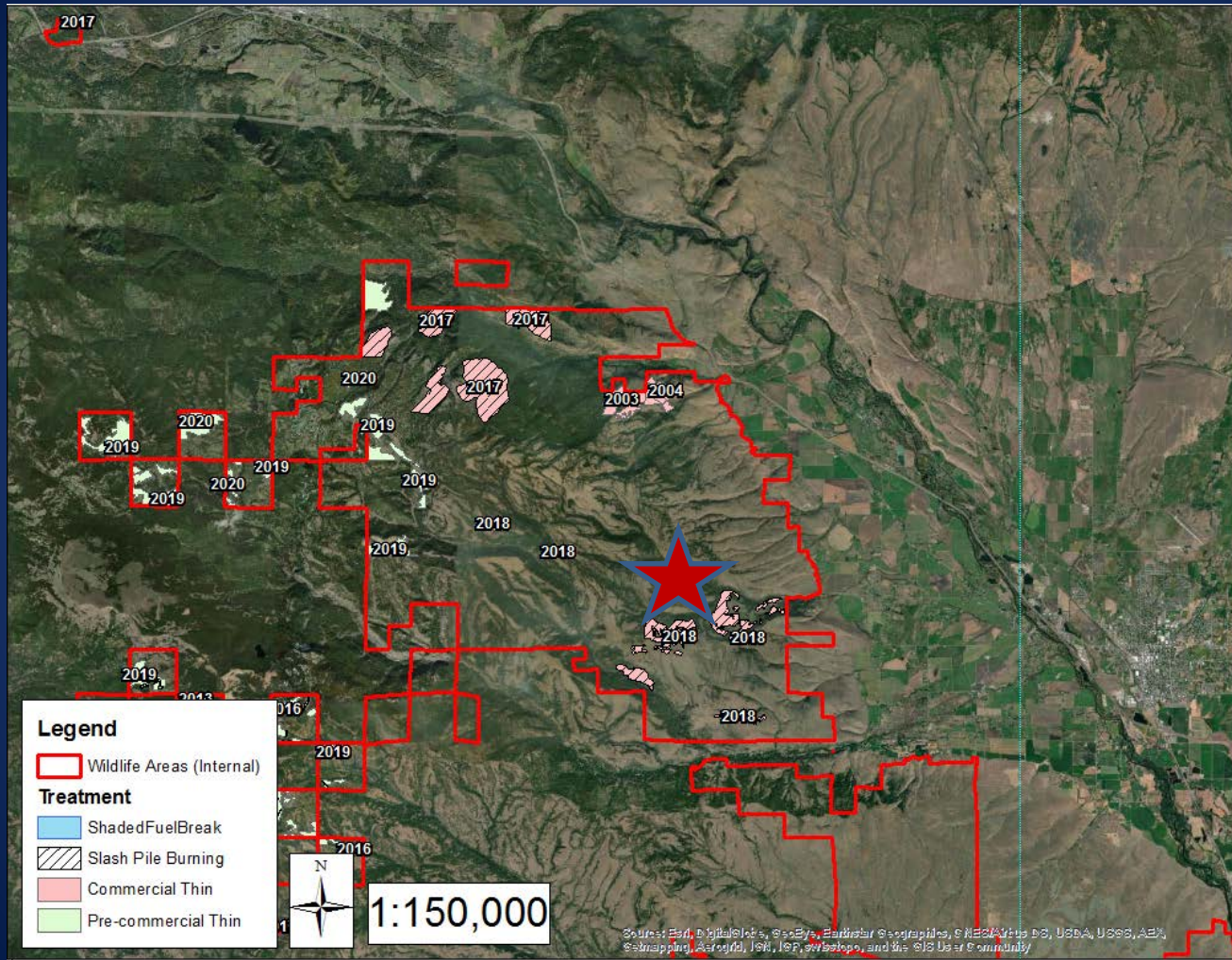
Expected post treatment



Desired future condition

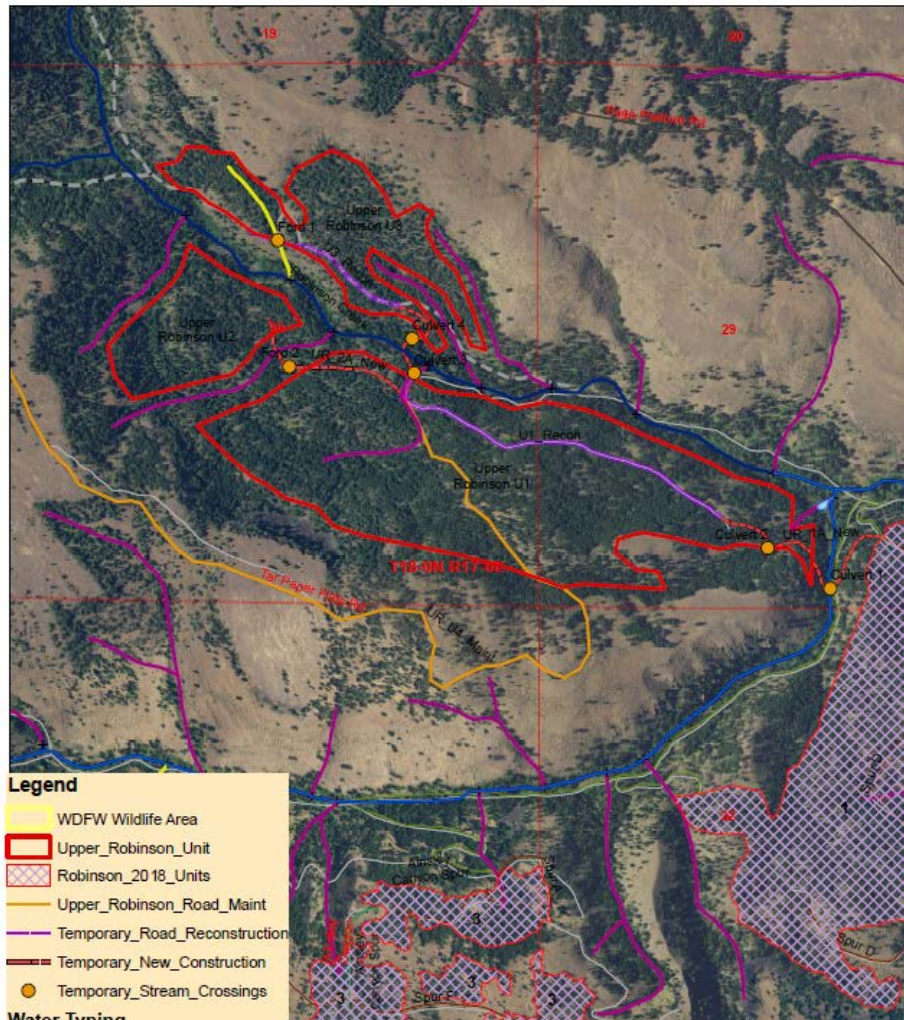


# Upper Robinson (Kittitas County)



# Upper Robinson Units 1-3

Wildlife Area: LT Murray  
County: Kittitas

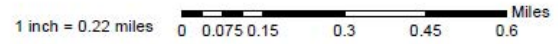


- Legend**
- WDFW Wildlife Area
  - Upper\_Robinson\_Unit
  - Robinson\_2018\_Units
  - Upper\_Robinson\_Road\_Maint
  - Temporary\_Road\_Reconstruction
  - Temporary\_New\_Construction
  - Temporary\_Stream\_Crossings

- Water Typing**
- Water Type Code**
- F
  - N
  - S
  - U
  - X

Project Leader: Rod Pfeifle  
rod.pfeifle@dfw.wa.gov  
509-680-3175

Unit 1=166 Acres  
Unit 2=34 Acres  
Unit 3=52 Acres  
Unit 4=138 Acres  
Total=390 Acres





# Desired Changes

Current Condition



Expected post treatment



Desired future condition



# Adjacent Reference Site Robinson Canyon Phase 1 (2018)

Untreated



Immediately after thinning



# Questions?

