

Elk General Seasons and Special Permits

Brock Hoenes
Ungulate Section Manager, Wildlife Program





WACs:

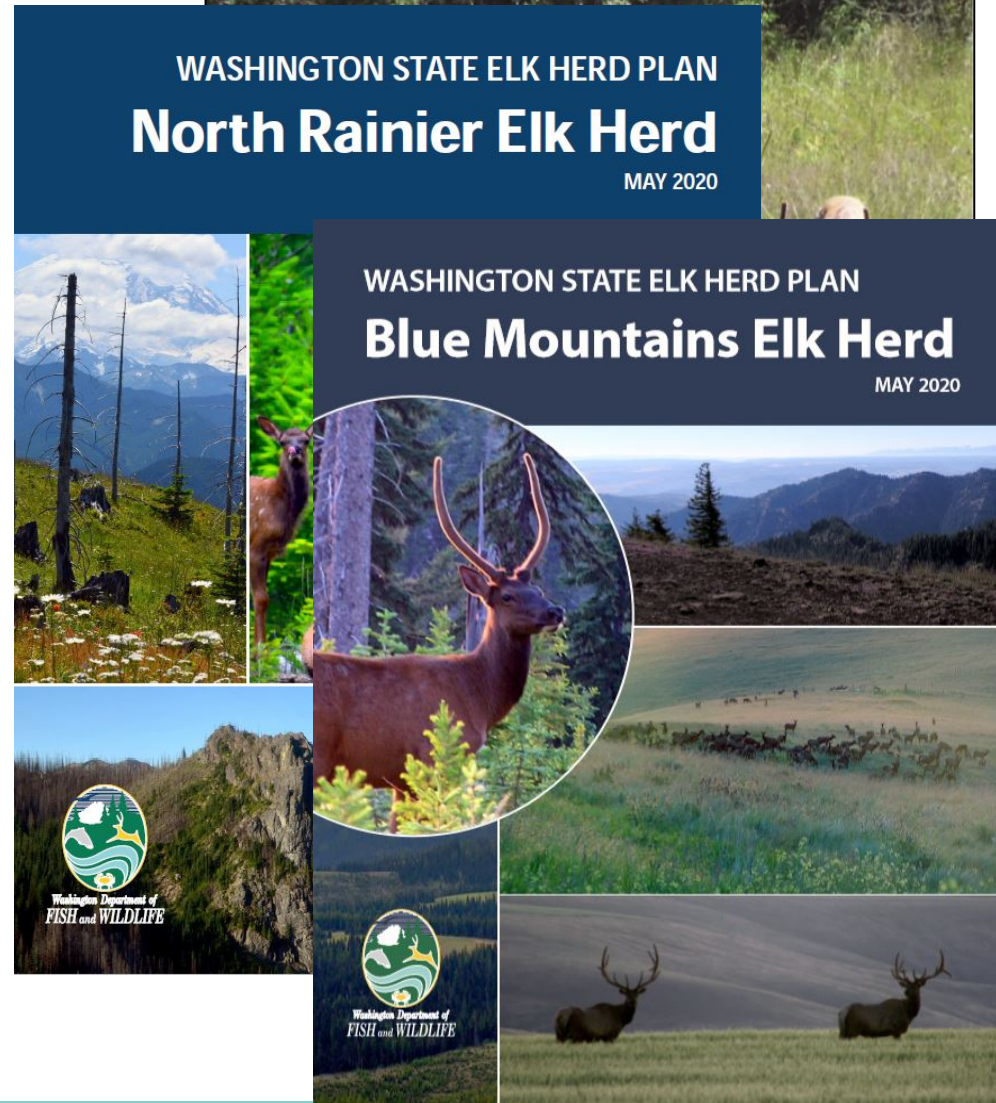
220-415-050 2021-2023 Elk general seasons and definitions.

220-415-060 2021 Elk special permits.

Willapa Hills Elk Herd Management Plan

1. Public Comment
2. Recommendations not specific to a herd
3. Status update, recommendations, & comments by herd
4. Questions

Content



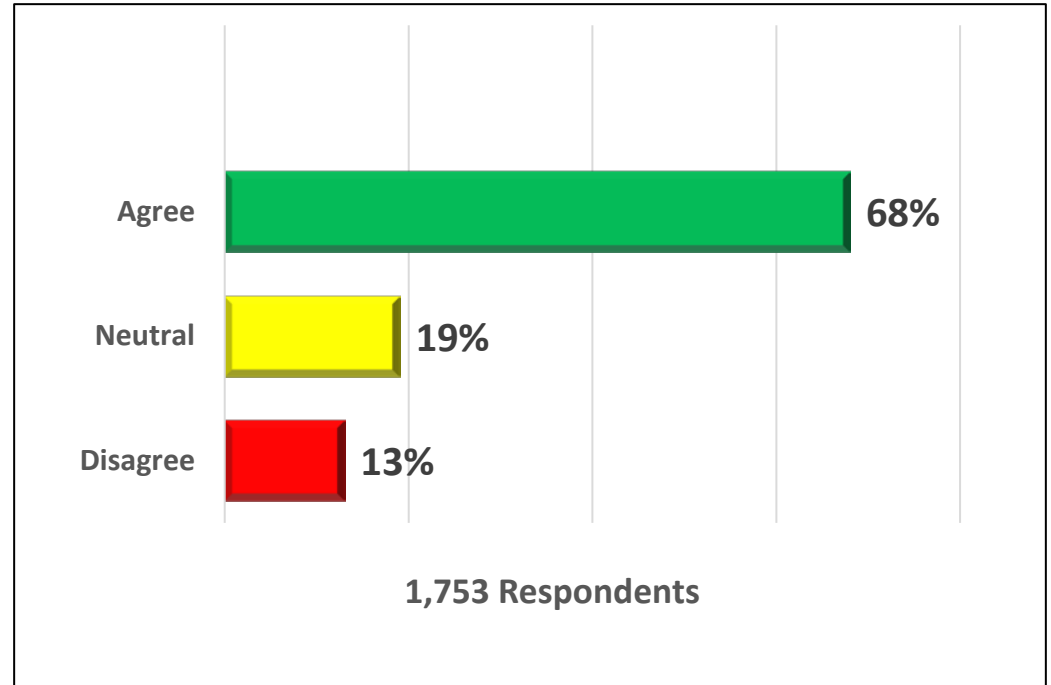
PUBLIC COMMENT

GENERAL SEASONS

- 234 comments, 6 emails or letters

Major Themes

- True Spike (59)
- Increase opportunity (33)
- Reduce opportunity (24)
- GMU 371 (31)
- GMU 578 (16)
- Predators (9)
- Tribal (9)



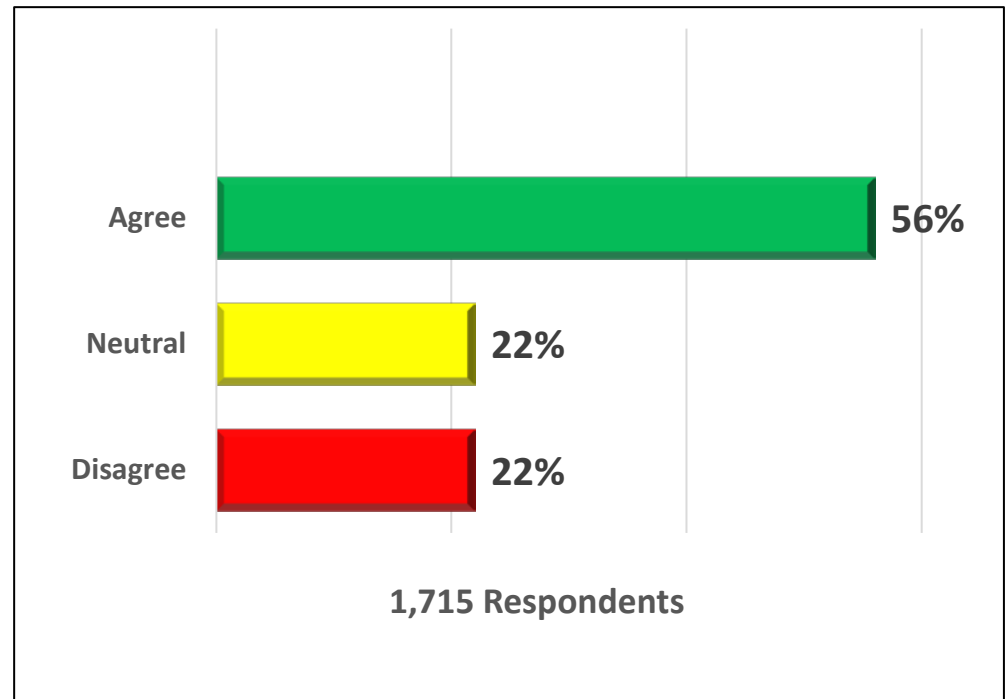
PUBLIC COMMENT

SPECIAL PERMITS

- 216 comments, 3 emails or letters

Major Themes

- Permits in GMU 371 (48)
- MH hoof disease (36)
- Increase permits (26)
- Increase permits for Y, S, D (14)
- Don't increase fees (12)



ELK GENERAL SEASONS

WAC 220-415-050

1. Adjusted season dates to align with calendar year
2. Administrative change to remove:
 - List of GMUs by APR to reduce redundancy with table
 - ‘Areas with Special Restrictions’ section (not needed in rule)
3. Open GMUs 272, 278, 284, 290, 382, and 379 during the early general archery and/or muzzleloader seasons for Any Elk
 - 1 agree, 2 disagree
 - GMU 382 during late archery (**recommended adjustment**)



ELK SPECIAL PERMITS

WAC 220-415-060

1. Adjusted season dates to align with calendar year
2. Adjusted special permit numbers via special permit allocation formula
 - Done for hunts where the only opportunity is via special permit
 - Quality and Bull categories (22 GMUs, 66 hunts)
 - Presented as recommended adjustments (27 hunts)
3. Administrative change to remove hunts associated with EA 6011 (Centralia Mine)
4. Added 40 Master Hunter permits in association with a pilot program designed to incentivize hunters to target elk that have treponeme-associated hoof disease—11 agree, 26 disagree



HOOF DISEASE INCENTIVE PROGRAM

1. Incentivize general season elk hunters

- Must submit hooves to WDFW for inspection (drop barrels)
- Hunters that submit abnormal hooves automatically entered into a drawing for special incentive permits in 2022
- All participants will receive a waterproof license holder

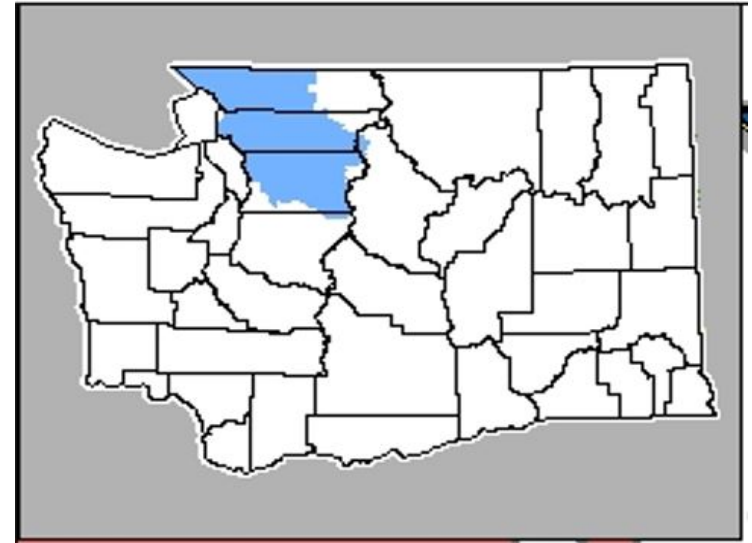
2. Offer special permits for elk with hoof disease

- Initially being offered to Master Hunters
- 3 initial hunt areas that consist of 6-9 GMUs
- Antlerless elk with season dates of Dec. 1-Feb. 28
- Expected to target elk with hoof disease
- Must submit all 4 hooves to WDFW for inspection
- Hunters that submit abnormal hooves, will be allowed to harvest an additional elk under the same permit
- The permit itself is the incentive



NORTH CASCADES

- Population objective of 1,700-2,000 elk
- Surveys limited to core herd area
- Most recent estimates indicate 1,200-1,500 elk
- Bull:cow ratios remain above objective (22:100)
- Calf recruitment rates have been good to excellent (37:100 in 2020)
- Recommendations developed in collaboration with Point Elliot Treaty Tribes



NORTH CASCADES RECOMMENDATIONS

General Seasons

1. Change the legal elk during general modern firearm, archery, and muzzleloader seasons in GMU 448 from 'Any Elk' to '3 pt. min'
—5 agree, 1 disagree
1. Shorten the late archery and muzzleloader seasons and avoid overlap of the two seasons in GMU 407—1 agree, 4 disagree

Special Permits

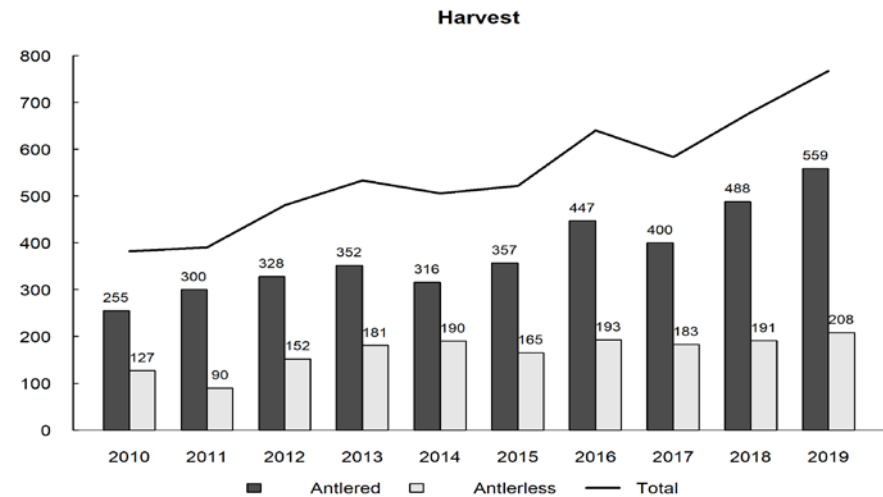
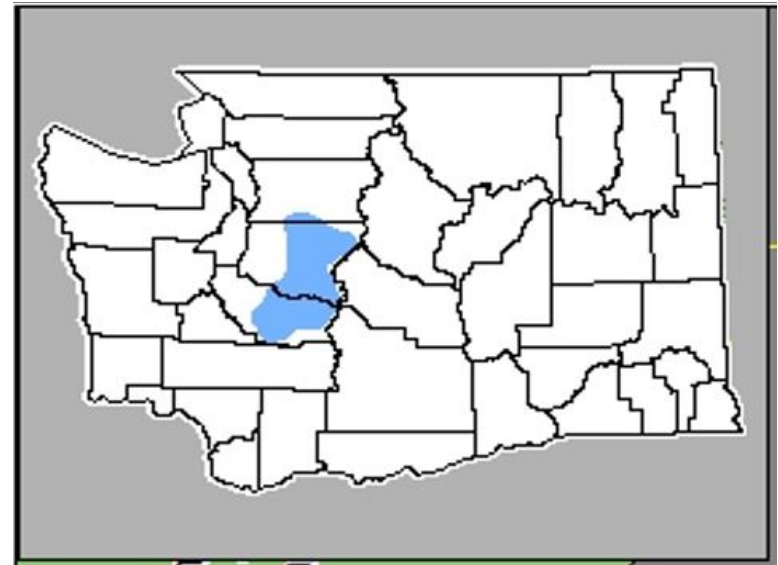
1. For all special permits associated with Elk Area 4941 (Skagit Valley), expand the hunt area to include all of GMU 437—3 agree, 1 disagree
 - 1 general comment to open GMU 418 to general seasons

	<u>2020</u>		<u>2021</u>	
Weapon	Dates	Days	Dates	Days
Archery	Nov. 25-Jan. 20	57	Nov. 25-Dec. 15	21
Muzzleloader	Nov. 25-Jan. 20	57	Dec. 16-31	16



NORTH RAINIER

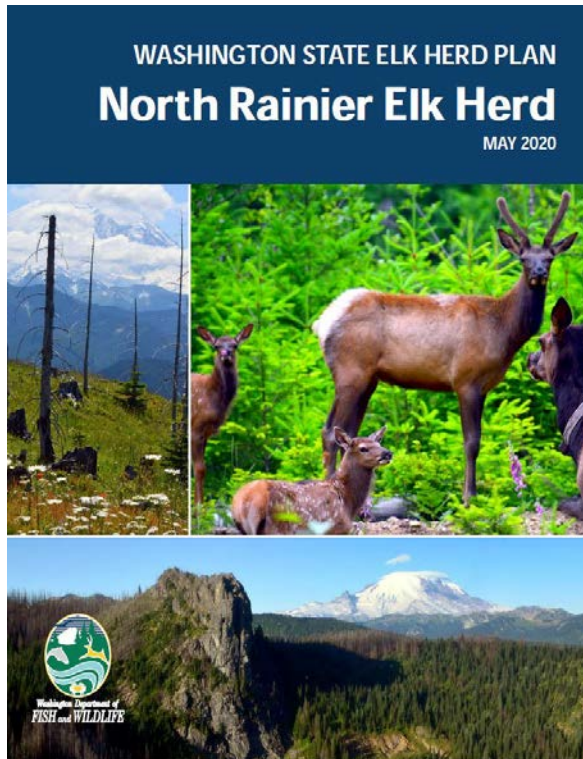
- Overall population objective of 4,850 elk with GMU-specific objectives
- Monitoring efforts primarily occur in GMUs 485, 490, and 653 and conducted by the Muckleshoot Indian Tribe
- Elk numbers throughout the herd area are stable or increasing
- Bull:cow ratios are at objective
- Calf recruitment has been good to excellent



NORTH RAINIER RECOMMENDATIONS

General Seasons

1. Open Elk Area 4601 (North Bend) during the modern firearm, early archery, and late muzzleloader seasons for 3 pt. min or antlerless elk

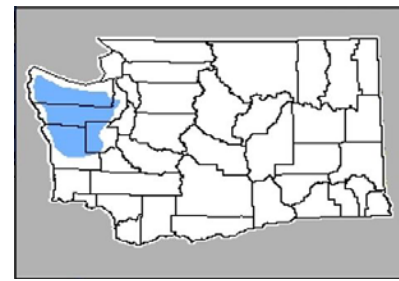


Special Permits

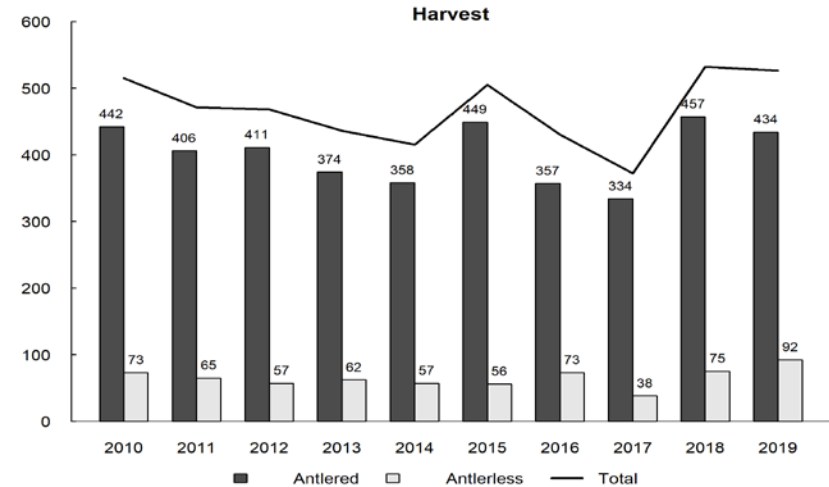
1. Remove the hunt for muzzleloader Hunters with Disabilities in Elk Area 4601
2. Add 1 Hunter Education Instructor Incentive Permit for Any Elk in GMUs 454 or 460
3. Recommended adjustments
 - 10 Quality bull permits in GMU 485
 - 12 Antlerless permits in GMU 485
 - Increase bull permits in GMU 653 (1)
 - Add cow permits in GMU 653 (1)



OLYMPIC



- Population objective of 11,350
- Manage for stable to increasing herd
- Surveys are conducted in collaboration with the Olympic Peninsula Treaty Tribes
- Bull:cow ratios are at objective (13:100)
- Calf recruitment has been marginal to good in recent years, but increased in 2020 (33:100)



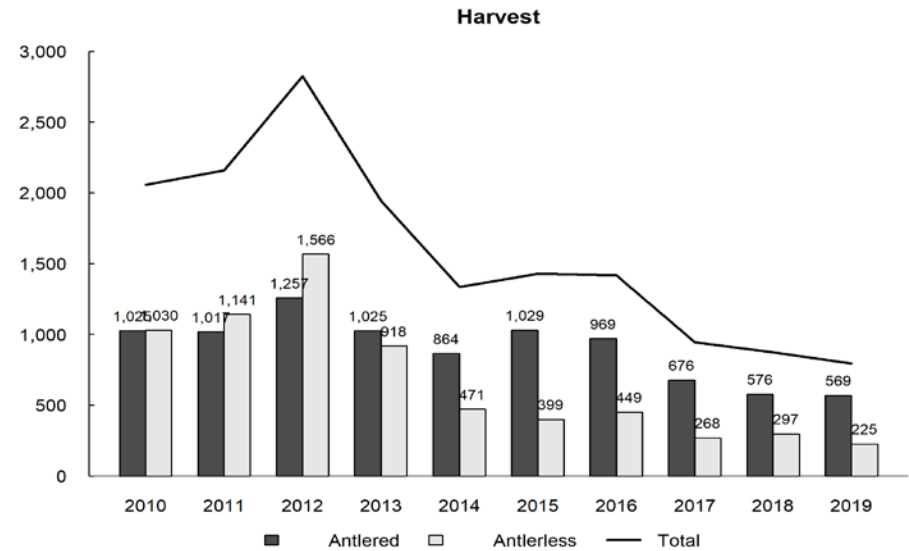
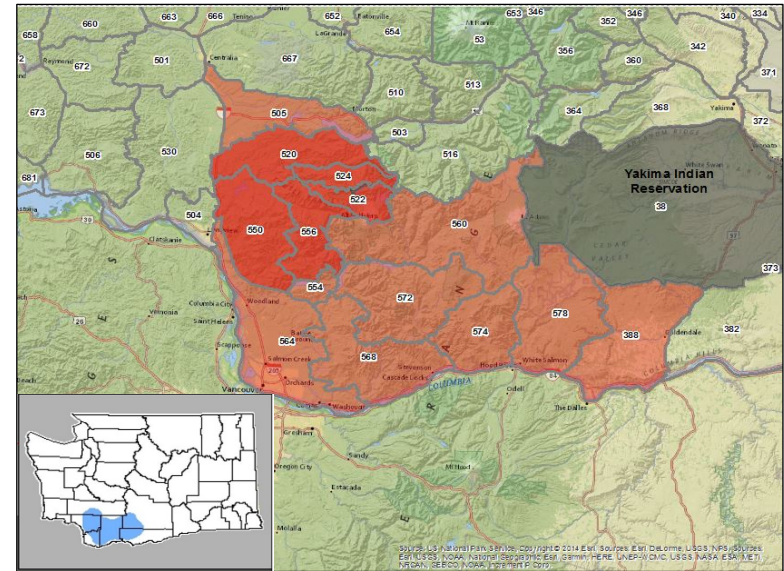
Special Permits

1. Reduce the number of Quality modern firearm permits in GMU 638 from 5 to 4
2. Offer 5 modern firearm Antlerless permits in the newly created Elk Area 6030—
5 agree, 1 disagree
3. Decrease the number of archery Antlerless permits in GMU 648 from 100 to 95



MOUNT ST. HELENS

- No numeric population objective
- Have managed for population stability since 2013
- Surveys only occur in the core area
- Surveys were not completed in 2020
- Both survey and harvest data indicate the herd has declined by ~45% since 2013
- Bull:cow ratios are at objective
- Calf recruitment rates have been good to excellent
- Substantial portion of the herd continues to be affected by hoof disease



MOUNT ST. HELENS RECOMMENDATIONS

General Seasons

1. Change the legal elk during general muzzleloader seasons in GMU 578 from 3 pt. min or antlerless to 3pt. Min—11 agree, 6 disagree
 - 1 comment advocating for an archery season for antlerless in GMU 520

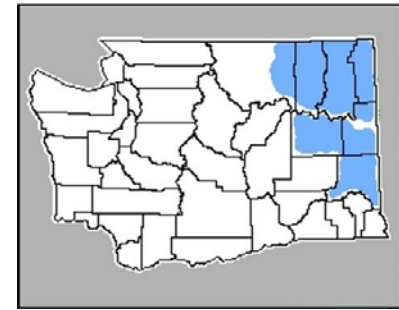
Special Permits

1. Remove references to Elk Area 5066 for hunts in GMU 524—1 agree, 79 disagree
2. Reduce muzzleloader Bull permits in GMU 554 from 15 to 5
3. Reduce muzzleloader Antlerless permits in GMU 554 from 20 to 10
4. Add 75 muzzleloader Antlerless permits in GMU 578—1 agree
5. Remove the Master Hunter seasons associated with Elk Area 5062 (Trout Lake)

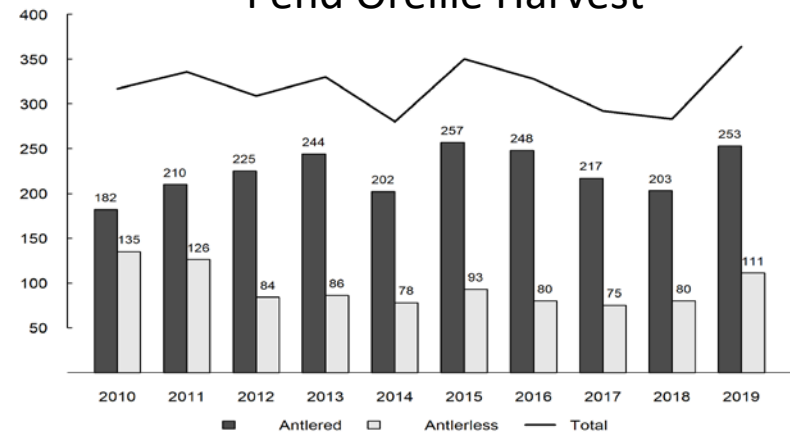


SELKIRK

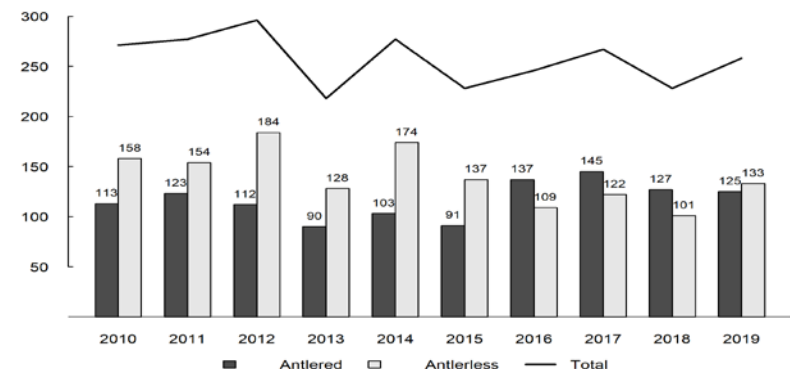
- Managed as 2 subherds (Pend Oreille and Spokane)
- Population objective of 1,500-2,500 elk in Pend Oreille and 1,000-1,500 in Spokane
- Surveys are primarily limited to the Turnbull National Wildlife Refuge
- Use harvest data to index population trend, which indicates relatively stable populations within both subherd areas
- **Only proposed change is to add GMU 121 to the areas open to modern firearm Hunters with Disabilities for antlerless elk**



Pend Oreille Harvest

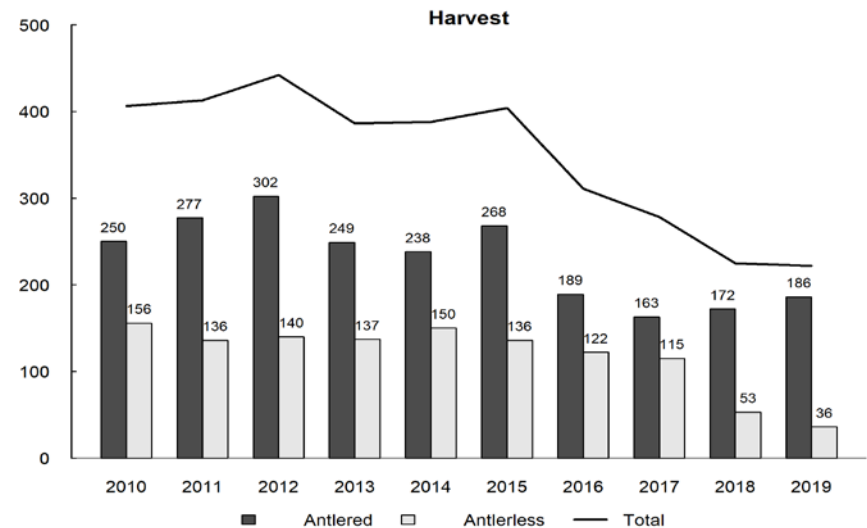
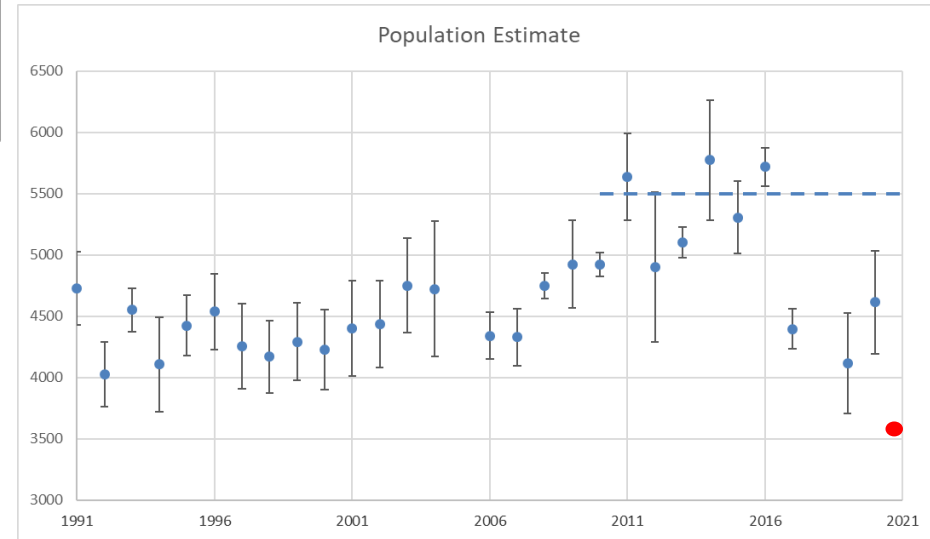


Spokane Harvest



BLUE MOUNTAINS

- Population objective of 5,500 elk
- 2021—3,600 elk (35% below objective)
- Bull: Cow ratios at objective
- Calf recruitment rates poor to marginal since 2017 (range = 17-25:100)
- Substantial decline in harvest since 2015 (~50%)
- Have initiated efforts to implement the predator-prey guidelines outlined in the GMP



BLUE MOUNTAINS RECOMMENDATIONS

General Seasons

1. Remove all hunts and references associated with EA 1010
2. Remove all hunts and references associated with EA 1040
 - 7 agree, 13 disagree



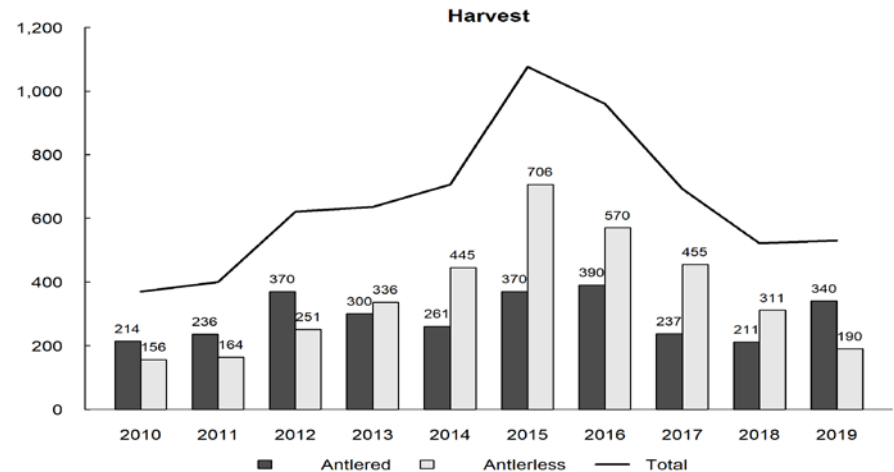
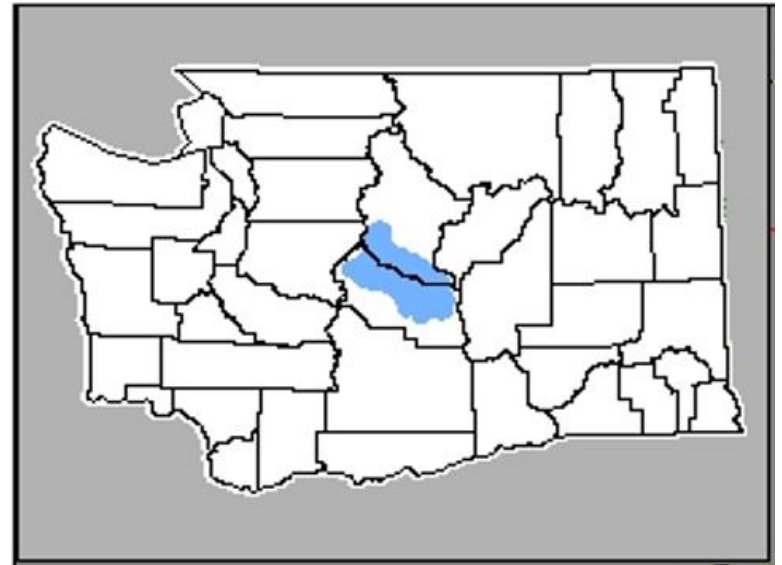
Special Permits

1. Reduce the number of modern firearm and muzzleloader Antlerless permits in GMUs 145 & 178
2. Reduce the number of modern firearm muzzleloader Antlerless permits in EA 1013
3. Reduce the number of modern firearm Antlerless permits in EA 1081
4. Reduce the number of permits for modern firearm Hunters with Disabilities in GMU 178
5. Recommended adjustments
 - Remove reference to EA 1040
 - Change hunt name from Dayton to Marengo



COLOCKUM

- Population objective of 4,500 elk
- The herd has declined by nearly 40% since 2015 when it was ~1,600 elk above objective
- The herd was 18% below objective in spring 2020
- Bull:Cow ratios are at objective (12:100)
- Calf recruitment rates were poor to marginal in 2017, 2019, and 2020 (range = 17-25:100)
- Substantially reduced opportunities to harvest antlerless elk in 2020



COLOCKUM RECOMMENDATIONS

General Seasons

1. Change the legal elk during general archery seasons from True Spike to Spike Bull
 - 11 agree, 6 disagree
 - 42 eliminate true spike for all
2. Open 249 during late archery
 - 1 disagree
3. Open 251 during early & late archery
 - 1 agree, 1 disagree
4. Open 249/251 during early muzzleloader
 - 3 agree, 1 disagree

Special Permits

1. Add 4 Any Bull and 20 Antlerless modern firearm permits in EA 2033
 - 2 agree, 2 disagree
2. Remove the Master Hunter season for Designated Areas in 328 & 368
3. Add archery Antlerless permits to correct a clerical error from 2020
4. 50 modern firearm antlerless permits (**recommended adjustment**)

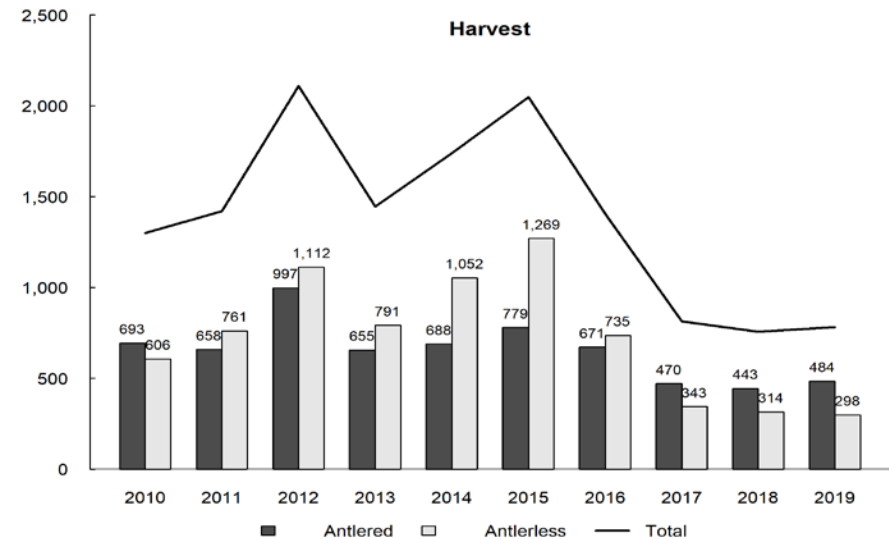
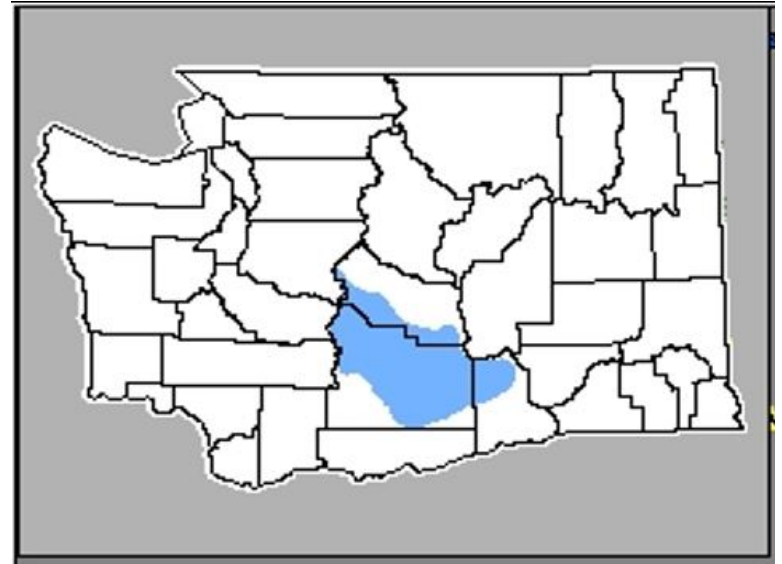
Other Comments

- 2—increase archery permits
- 1—don't increase antlerless harvest
- 1—more antlerless tags in EA 2032



YAKIMA

- Population objective of 9,500 elk
- No aerial flights in 2020 or 2021
- The herd was 14% below objective in spring 2019 (8,300 elk)
- Bull:Cow ratios were 11:100 in 2019
- Calf recruitment rates have been marginal since 2017 (range = 19-27:100)
- Substantially reduced opportunities to harvest antlerless elk in 2020



YAKIMA RECOMMENDATIONS

General Seasons

1. Open GMU 371 during early archery season
 - 8 agree, 6 disagree (permit only)
2. Shorten MH Only season in 371 from Aug. 1-Oct. 15 to Aug. 1-31
 - 8 agree, 17 disagree

Special Permits

1. Change the legal elk for Hunters with Disabilities in GMU 371 from Any Bull to Any Elk
2. Increase the number of modern firearm and muzzleloader Antlerless permits in GMU 371

Special Permits Cont'd

3. Decrease the number of antlerless permits for MF and Hunters w/ Disabilities in core herd area
4. Add 40 Youth and 20 65+ archery Antlerless permits in core herd area
5. Move special bull permits in GMU 371 from 'Bull' category to 'Quality'
 - 49 disagree
6. Add archery Antlerless permits to correct a clerical error from 2020
 - 2 comments advocating for more antlerless permits



Questions?

