

# Game Reserves, Waterfowl Closures, and Regulated Access Areas

Kyle Spragens  
Waterfowl Section Manager, Wildlife Program





WAC 220-411-140 Lake Terrell Game Reserve.

WAC 220-411-210 Stratford Game Reserve.

WAC 220-416-070 Columbia, Snake, and Yakima River waterfowl, coot, and snipe closures.

WAC 220-416-080 Lynch Cove and Union River hunting area restriction.

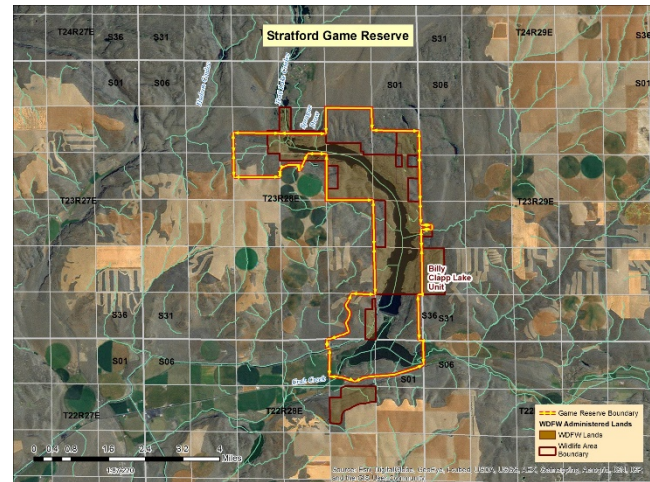
# Lake Terrell Game Reserve & Stratford Game Reserve

What are Game Reserves?

Proposal:

Technical Adjustments under area description to align intent with legal description.

These adjustments do not change how users have understood these Game Reserve closures.



# Public Comment

## WAC 220-411-140 Lake Terrell Game Reserve:

1,251 comments:

- 47% Agree
- 4% Disagree
- 49% Neutral

## WAC 220-411-210 Stratford Game Reserve:

1,242 comments:

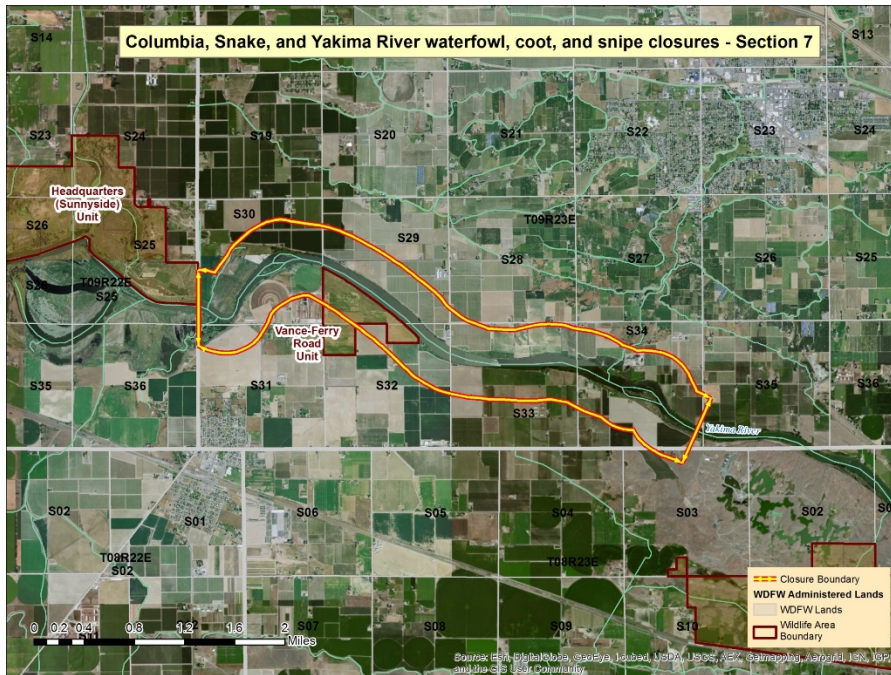
- 46% Agree
- 5% Disagree
- 49% Neutral

## Common themes in nine written comments:

- Concern over “change” and need for better maps

# Columbia, Snake, and Yakima River waterfowl, coot, and snipe closures

What are Waterfowl Closures?



Technical Adjustments under section 4 to remove reference to the “Wooden Tower” which has been removed from the landscape.

Eliminate section 7: Would now allow waterfowl, coot, and snipe hunting during approved season dates. The last closure on the Yakima River; recommended adjustment to retitle to reflect this change: **Columbia and Snake River waterfowl, coot, and snipe closures.**



# Public Comment

**WAC 220-416-070: Columbia and Snake River waterfowl, coot, and snipe closures.**

1,244 comments:

- 51% Agree
- 5% Disagree
- 44% Neutral

**Common themes in eight written comments:**

- need for better maps
- reference to sections not proposed for change

# Regulated access area restrictions for waterfowl, coot, and snipe hunting

Public Lands in WA facilitate the majority of waterfowl hunter days afield.

Balancing waterfowl hunting opportunities with resource requirements and habitat management have direct implications to the waterfowl hunting experience on these limited public lands.

## Changes to:

- Local waterfowl production
- Proximity of feeding to resting areas
- The quality of wetland habitat management, and
- The amount of disturbance pressure

Can all influence what waterfowl hunters experience in various areas of the state



# Regulated access area restrictions for waterfowl, coot, and snipe hunting

Waterfowl Hunters in Washington were asked:

What should the department prioritize when crafting waterfowl hunting opportunities on public lands?

## Alternatives:

- No Change
- Prioritize waterfowl population status and wetland habitat enhancements
- Prioritize waterfowl hunters' access
- Work with local stakeholders to identify limited access opportunities appropriate for improving a particular public land site by reducing pressure and competition
- A combination of above

Votes	Percentage
No change	170 18%
	101 11%
	184 20%
	52 6%
Combo of Alts	432 46%





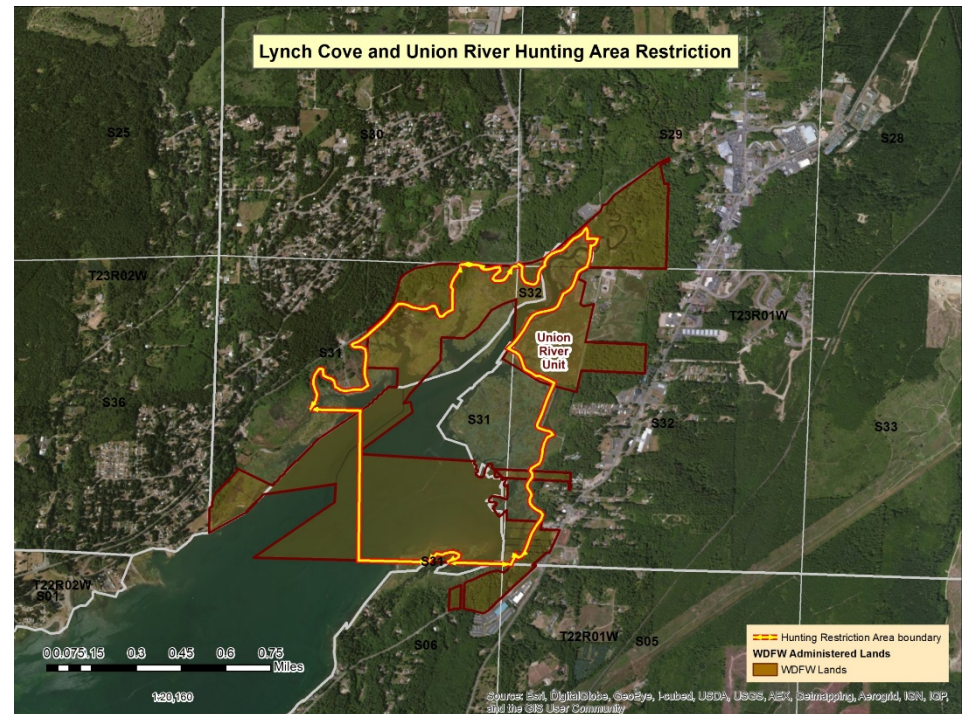
# Regulated access area restrictions for waterfowl, coot, and snipe hunting

What are Regulated Access Areas?

Consistent with Department Lands WAC 220-500-040  
Regulating public access, and

Consistent with waterfowl hunter opinion survey that supported a combination of prioritizing resource, access, and site considerations

Only One of these Ten current Waterfowl RAAs have specifics of limited blinds, parking access, days of the week... specified to boundaries solidified in WAC.



# Regulated access area restrictions for waterfowl, coot, and snipe hunting

This proposal helps formalize the specific descriptions assigned to these boundaries:

Lynch Cove and Union River (SPSWA)

Frenchman (Columbia Basin WA)

North Potholes (Columbia Basin WA)

Winchester (Columbia Basin WA)

Mesa Lake (Sunnyside-Snake River WA)

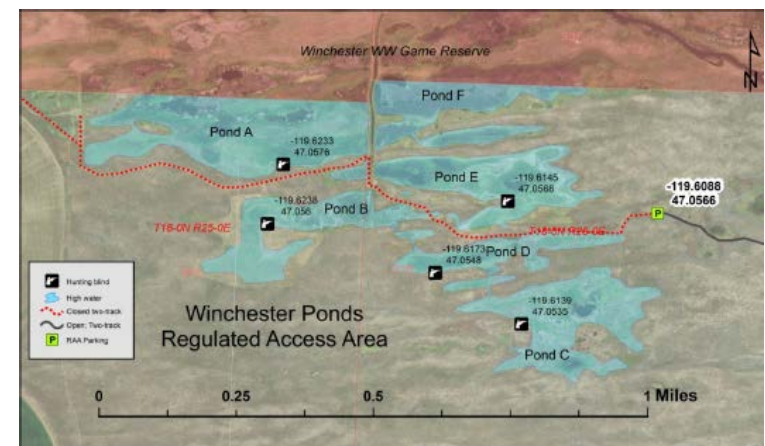
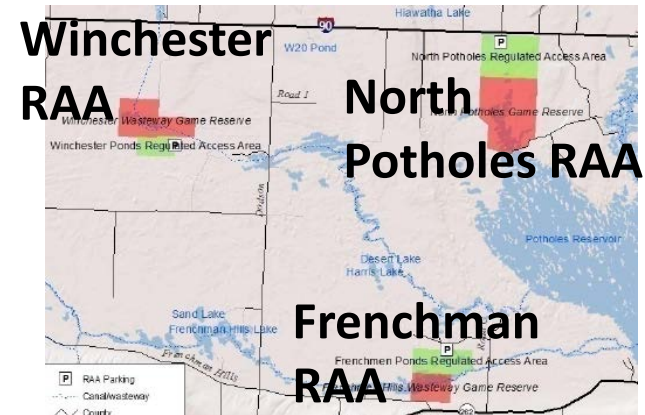
Windmill Ranch (S-SRWA)

Dungeness (North Olympic WA)

Samish River (Skagit WA)

South Padilla Bay (Skagit WA)

Elk River (Johns River WA)



# Public Comment

**WAC 220-416-080: Regulated Access Area restrictions for waterfowl, coot, and snipe hunting.**

1,209 comments:

- 35% Agree
- 5% Disagree
- 60% Neutral

**Common themes in eight written comments:**

- Concerns over "change"
- need for better maps

# Questions?

