

# Draft Wolf Model Scenarios

For simulations in UW wolf model

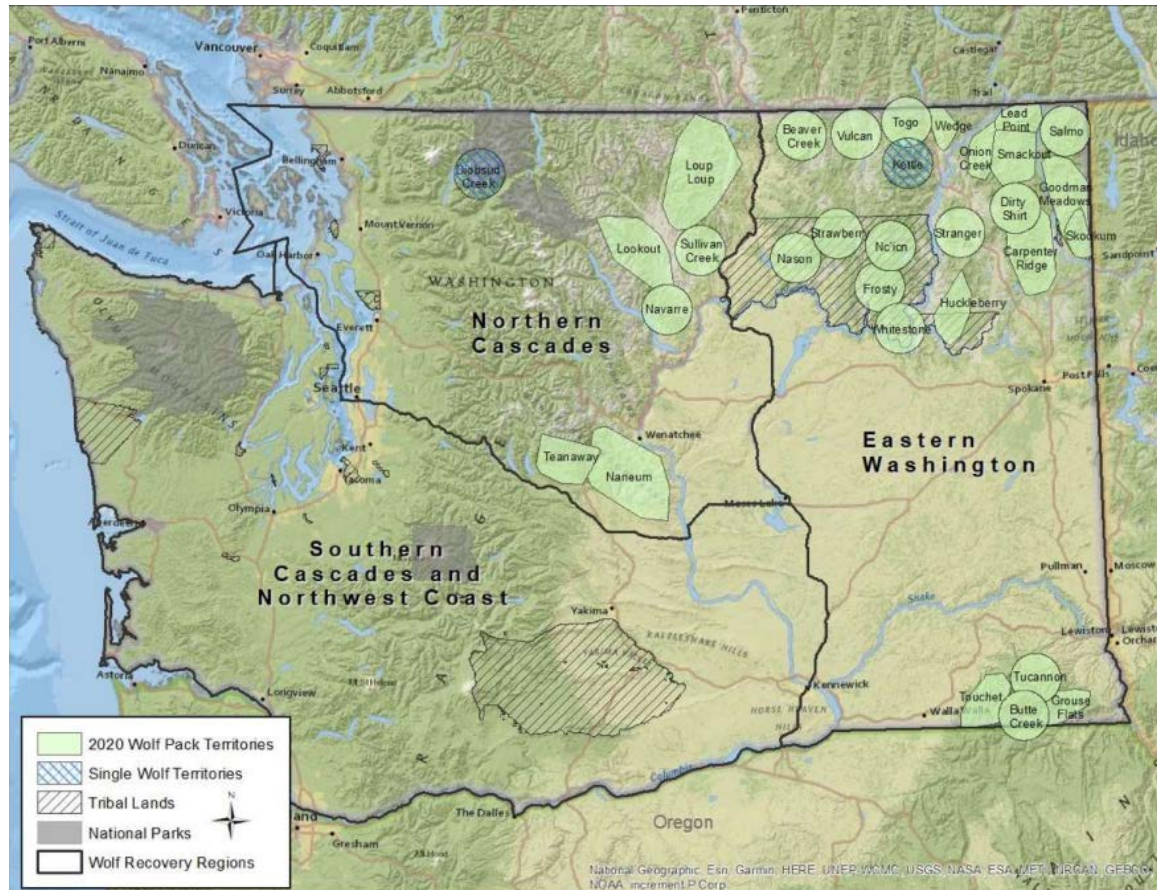
Donny Martorello

Chief Scientist, Wildlife Program



# Baseline Model

Starting with occupied territories in 2020, project statewide population growth

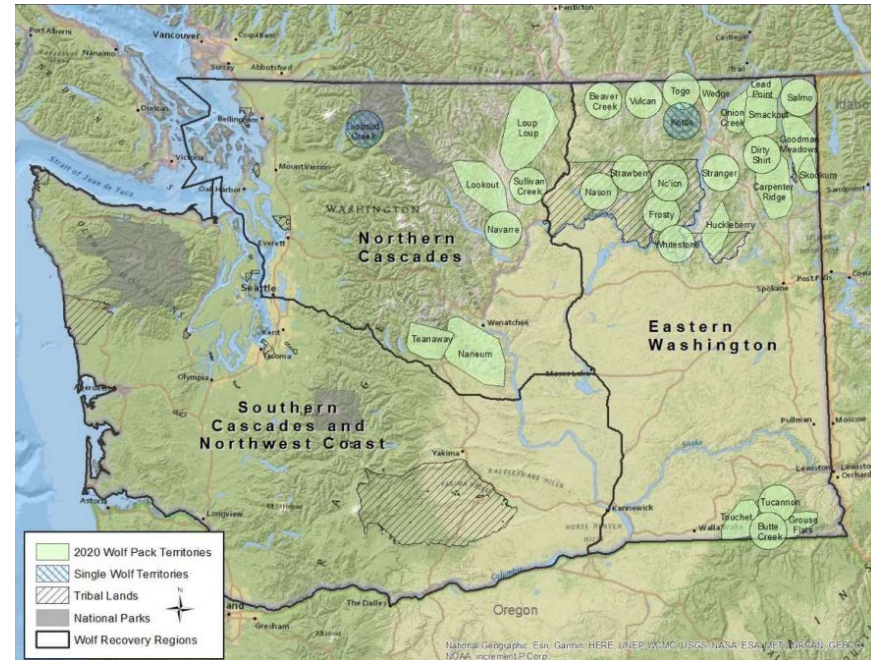


# Scenarios

Starting with occupied territories in 2020 (set statewide and region quasi-extinction level):

## Model outputs

- With and without immigration from outside of Washington
- Time to recovery objectives in Wolf Plan
- Others?



# Scenarios

Starting with occupied territories in 2020  
(set statewide and region quasi-extinction level)

## Management simulations:

- With and without wolf removals to address wolf-livestock conflict
- With and without regulated wolf harvest
- With and without wolf translocation to the South Cascades/Northwest Coast wolf recovery region
- Others?

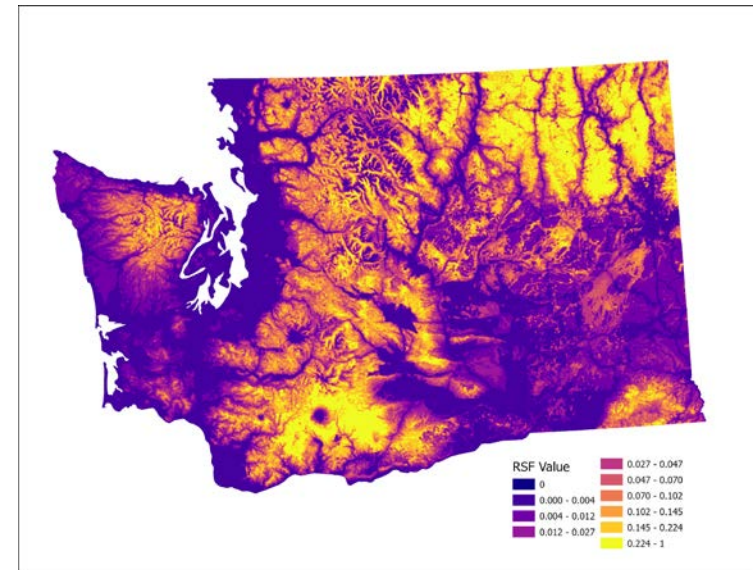


# Scenarios

Starting with occupied territories in 2020  
(set statewide and region quasi-extinction level)

## Other areas of uncertainty:

- With and without wolf disease outbreak
- Different resistance landscape for dispersal (current and at pack saturation)
- Others?



# Discussion



# Questions?

