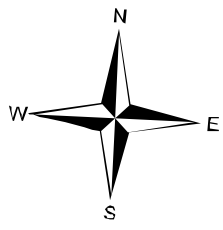
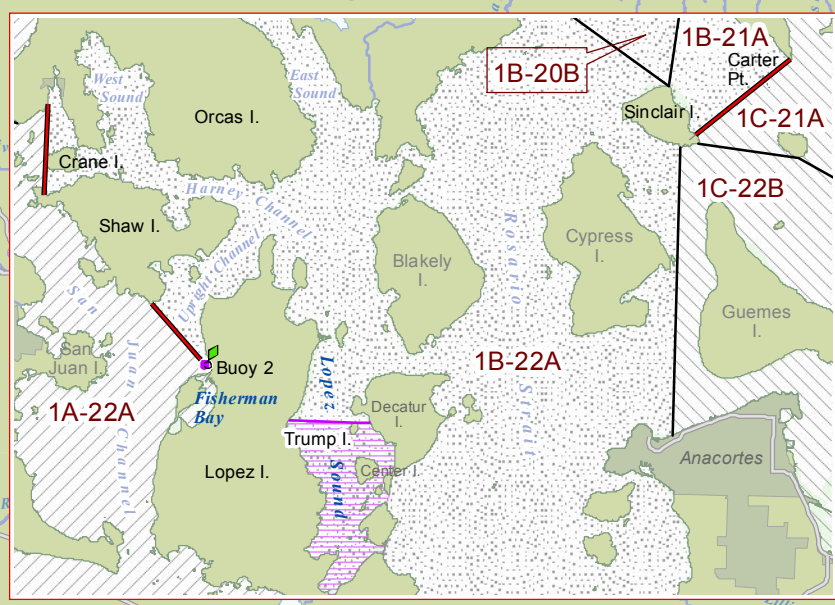
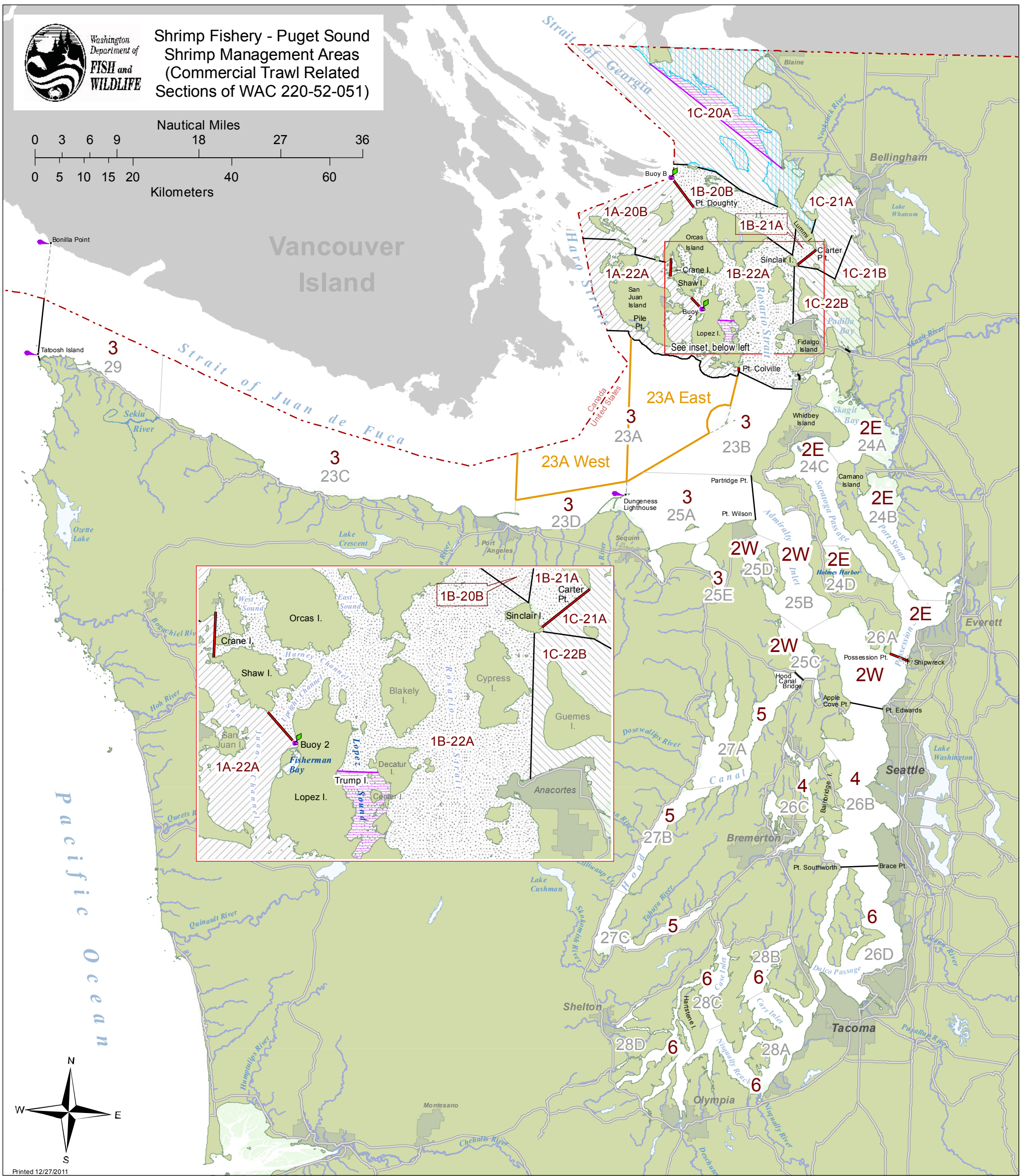
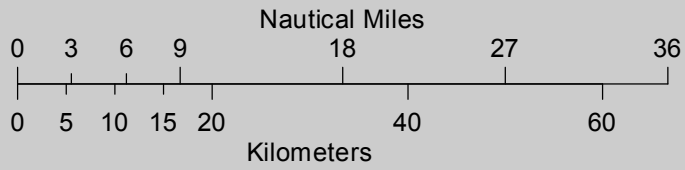




Washington
Department of
**FISH and
WILDLIFE**

Shrimp Fishery - Puget Sound Shrimp Management Areas (Commercial Trawl Related Sections of WAC 220-52-051)



Printed 12/27/2011

Line Symbols

- Disregarded MCRA boundary
- Concomitant MCRA boundary
- Section 3 boundary
- Section 7 boundary
- Section 6 boundary
- Boundary adjunct

Shading Symbols

- 20 fm or shallower in 20A
- Section 3 closures
- Paragraph 7a Area 1A
- Paragraph 7b Area 1B
- Paragraph 7c Area 1C

Text Symbols

- MCRA
- Paragraph 6 Area
- Paragraph 7 Area
- Paragraph 8 Area

Shrimp fishery - Puget Sound. (excerpted paragraphs that map specific commercial trawl shrimp fishery rules)

- (3)(c)(ii) Shrimp trawl fishing closed in Lopez Sound south of a line projected true east-west from the northern tip of Trump Island from the season opening through July 9th.
- (f) The following restrictions apply to shrimp beam trawl harvest in Marine Fish-Shellfish Management and Catch Reporting Area 20A:
- (i) Closed in waters east of a line from the southwest corner of Point Roberts to Sandy Point.
 - (ii) Closed in waters shallower than 20 fathoms.
- (5) For purposes of shrimp pot harvest allocation, fishing season, and catch reporting, the Marine Fish-Shellfish Management and Catch Reporting Areas (catch areas) are modified as follows:
- (c) Catch Area 26A is divided into two subareas:
- (i) 26A-E (east) is those waters of Catch Area 26A north and east of a line projected 110 degrees true from the southern tip of Possession Point on Whidbey Island to the shipwreck on the opposite shore.
 - (ii) 26A-W (west) is those waters of Catch Area 26A south and west of a line projected 110 degrees true from the southern tip of Possession Point on Whidbey Island to the shipwreck on the opposite shore.
- (6) For purpose of shrimp trawl harvest allocation and catch reporting, 23A East is that portion of Catch Area 23A, east of a line projected true north from the Dungeness lighthouse. 23A West is that portion of Catch Area 23A, west of the line described herein.
- (7) The following areas are defined as Puget Sound Shrimp Management Areas:
- (a) Shrimp Management Area 1A: Waters of Catch Area 20B west of a line from Point Doughty on Orcas Island to the bell buoy at the international boundary, and all waters of Catch Area 22A west of a line projected true north and south from the western tip of Crane Island, west of a line projected from the number 2 buoy at the entrance to Fisherman Bay to the southern tip of Shaw Island.
 - (b) Shrimp Management Area 1B: Waters of Catch Area 20B east of a line from Point Doughty on Orcas Island to the bell buoy at the international boundary, and waters of Catch Area 22A east of a line projected true north and south from the western tip of Crane Island, east of a line projected from the number 2 buoy at the entrance to Fisherman Bay to the southern tip of Shaw Island, and east of a line projected true south from Point Colville, and all waters of Catch Area 21A north and west of a line from the southern tip of Sinclair Island to Carter Point on Lummi Island.
 - (c) Shrimp Management Area 1C: Waters of Catch Areas 20A, 21B, 22B, and waters of Catch Area 21A not included in Management Area 1B.
 - (d) Shrimp Management Area 2E: Waters of Catch Areas 24A, 24B, 24C, 24D, and 26A-E (east).
 - (e) Shrimp Management Area 2W: Waters of Catch Areas 25B, 25C, 25D, and 26A-W (west).
 - (f) Shrimp Management Area 3: Waters of Catch Areas 23A, 23B, 23C, 23D, 25A, 25E, and 29.
 - (g) Shrimp Management Area 4: Waters of Catch Areas 26B and 26C.
 - (h) Shrimp Management Area 5: Waters of Catch Areas 27A, 27B, and 27C.
 - (i) Shrimp Management Area 6: Waters of Catch Areas 26D, 28A, 28B, 28C, and 28D.
- (8) In Shrimp Management Areas 1A, 1B and 1C, all catch must be reported by Management Area and Catch Area combined, either 1A-20B, 1A-22A, 1B-20B, 1B-21A, 1B-22A, 1C-20A, 1C-21A, 1C-21B, or 1C-22B.