

# Coastal Steelhead Preseason Planning & Proviso Update

WDFW Fish Committee  
November 17th 2022

Kelly Cunningham, Fish Program Director  
James Losee, Regional Program Manager  
Toby Harbison, Research Scientist

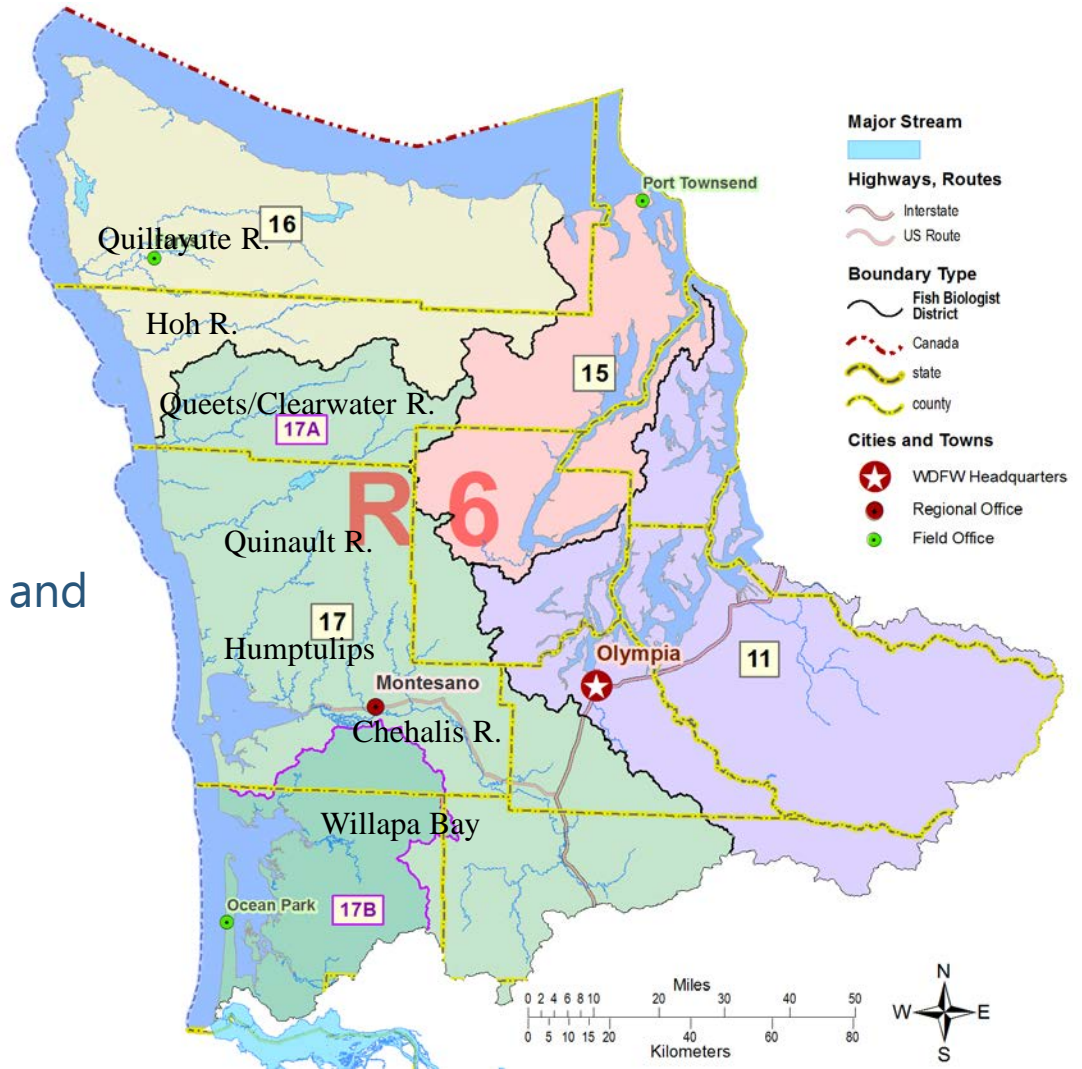


# Agenda

2021/22 review

2022-23 management framework and regulatory options

Coastal Steelhead Proviso

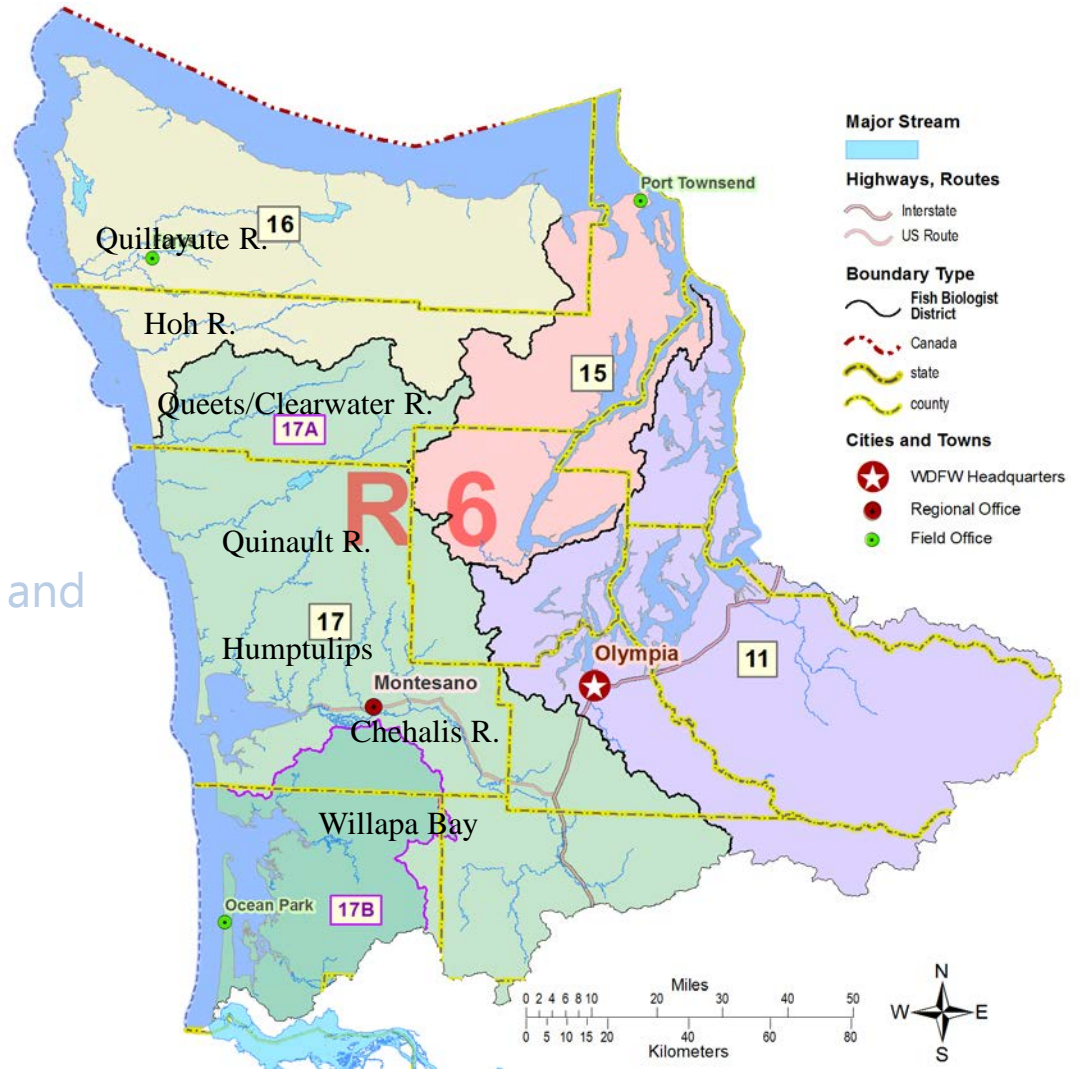


# Agenda

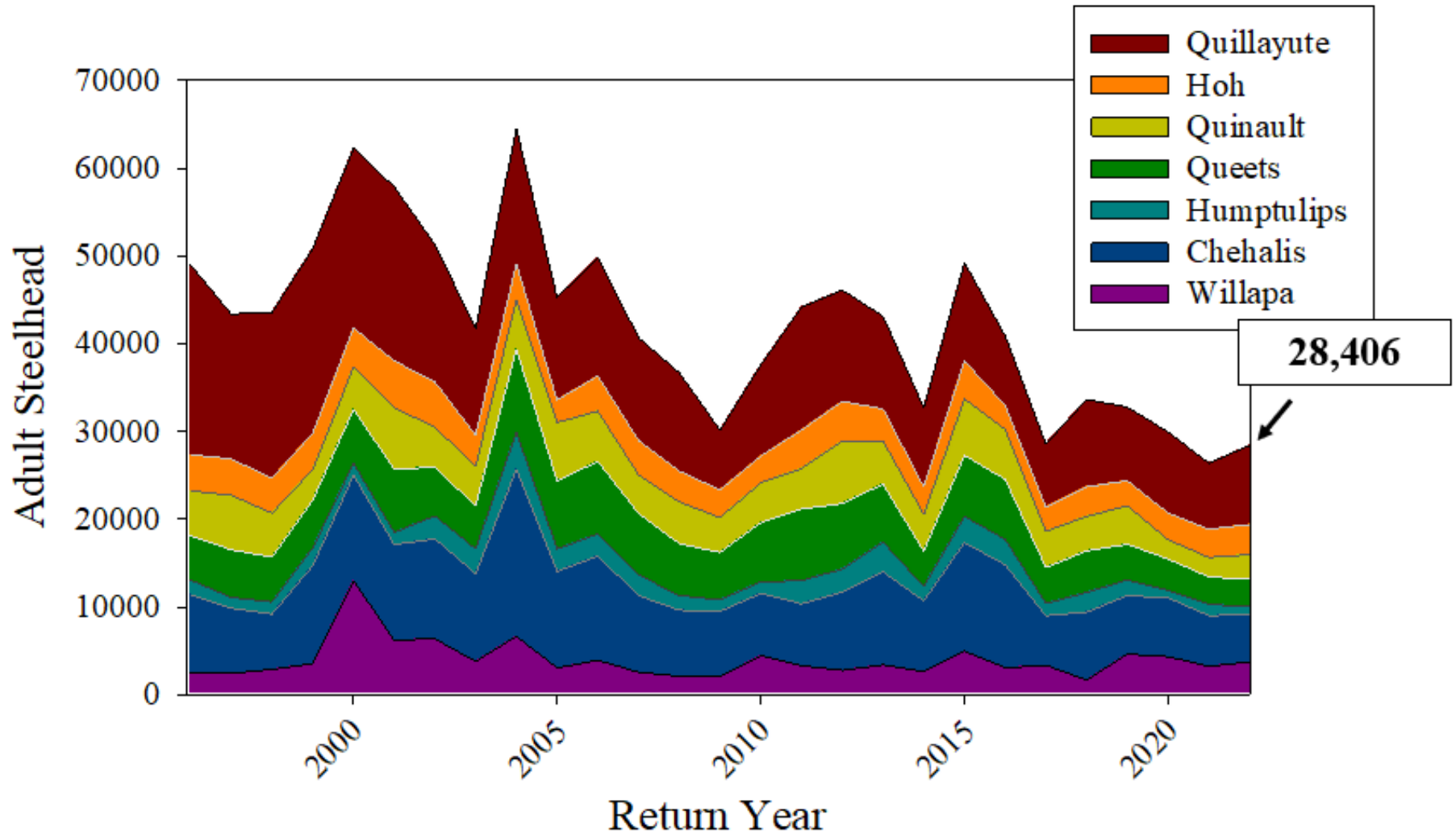
2021/22 review

2022-23 management framework and regulatory options

Coastal Steelhead Proviso



# 2021/22 Review: Abundance



# 2021/22 Review: Runsize

<b>River/Area</b>	<b>Predicted Runsize</b>	<b>Actual Runsize</b>	<b>Escapement Goal</b>	<b>Escapement</b>
Willapa	3,188	3,753	4,206	3,456
Chehalis	5,681	5,378	8,600	5,350
Humptulips	1,343	928	1,600	928
Upper Quinault	1,128	1,776	1,600	1,498
Queets/Clearwater	3,203	3,114	4,200	2,959
Hoh	3,141	3,443	2,400	3,100
Quillayute	8,516	8,996	5,900	8,186



Forecasted within 5% of actual runsize in 2021/22 and escapement goals not met in 5 of 7 rivers.

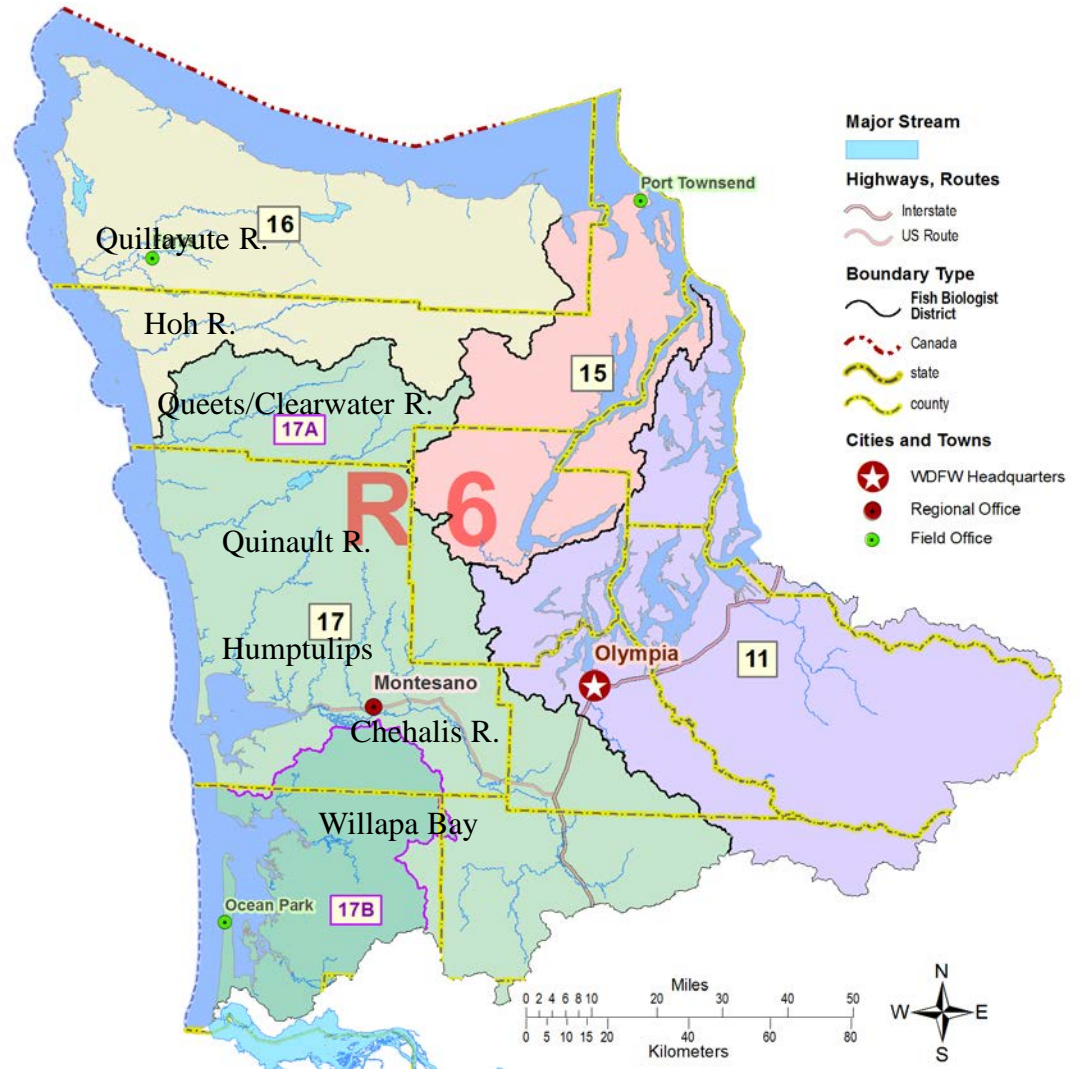


# Agenda

2020/21 review

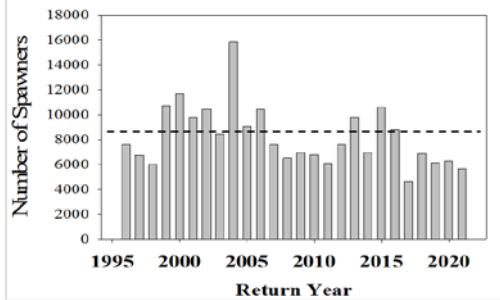
2022-23 management framework  
regulatory options

Coastal Steelhead Proviso

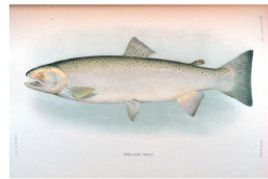


# Statewide Steelhead Management Plan

## Abundance



## Productivity

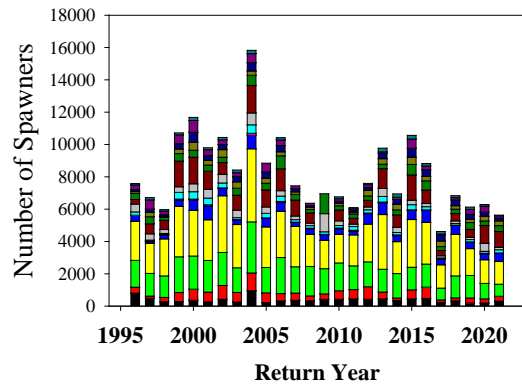


Washington Department of Fish and Wildlife

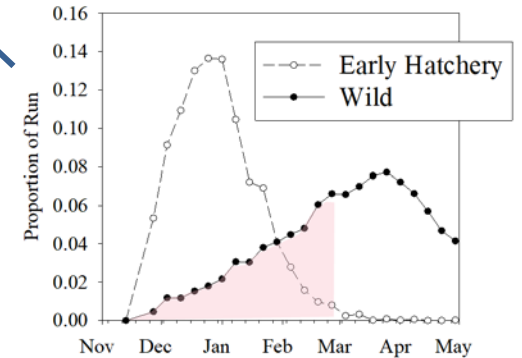
*Statewide Steelhead Management Plan:  
Statewide Policies, Strategies, and Actions*

February 29, 2008

## Diversity



## Distribution



# Sport Fishery Planning- Considerations/Constraints

- Limited in-season tools
- Effort shift uncertainty
- Forecasting uncertainty
- Tribal comanagement and Olympic National Park
- No estimates of mortality associated with poaching
- No unbiased estimate of total sport impact





# 2022/23 Wild Steelhead Forecasts

<b>System</b>	<b>Run-to-River Forecast</b>	<b>Escapement Goal</b>	<b>Wild Steelhead Relative to Goal</b>	<b>Sport Impact Limit</b>
Willapa	3,535	4,206	-671	353
Chehalis	7,114	8,600	-1486	198
Humptulips	1,222	1,600	-378	61
Upper Quinault	2,376	1,600	776	388
Queets/Clearwater	3,958	4,200	-242	198
Hoh	2,995	2,400	595	298
Quillayute	9,344	5,900	3444	1,722



# Town Hall #2 Review

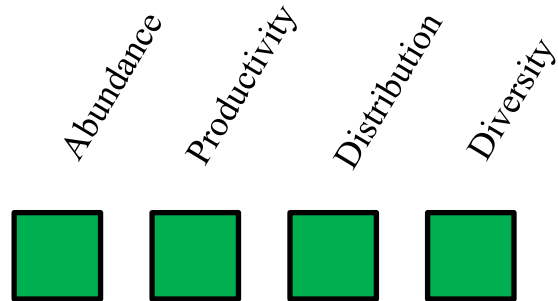
- ~120 people in attendance.
- General frustration over restrictions to fisheries and lack of monitoring and research.
- Appreciation for considering fisheries targeting hatchery fish.
- Strong support for continued conservation efforts given low runsize including full closure of fisheries.



# 2022/23 Fishery Proposals

1. Coastwide closure
2. Status Quo
3. Last year's regulations (no boat, no bait, no April)
4. Status quo with reduced days a week
5. Status quo in select waters
6. Status quo reduced hours
7. Last year's regulations reduced days
8. Hatchery and salmon directed fisheries in specific watersheds

\*Lake planting of surplus hatchery steelhead



# Analysis of Options

System	Sport Impact Limit	Full Closure	Status Quo	No Boat, No bait, No April	Fish from boat reduced days	Fish from boat in select waters	No Bait, No April, Reduced hours
Willapa	353						
Chehalis	198						
Humptulips	61						
Upper Quinault	388		↗				
Queets/Clearwater	198						
Hoh	298			↗			
Quillayute	1722		↗ ⌘				

- ↗ Concern for shifts in effort
- ⌘ Not accounting for tributary specific goals (diversity/distribution)
  - \* Final regulations require comanager agreement
  - \*\* Does not account for illegal catch
  - \*\*\* Does not account for overforecasting

Open to Fishing

Closed to Fishing



# Analysis of Options

System	Sport Impact Limit	Full Closure	Status Quo	No Boat, No bait, No April	Fish from boat reduced days	Fish from boat in select waters	No Bait, No April, Reduced hours	Reduced days
Willapa	353	Closed	Closed	Open	Open	Closed	Closed	Open
Chehalis	198	Closed	Closed	Closed	Closed	Closed	Closed	Closed
Humptulips	61	Closed	Closed	Closed	Closed	Closed	Closed	Open
Upper Quinault	388	Closed	Concern for shifts in effort	Open	Open	Open	Open	Open
Queets/Clearwater	198	Closed	Closed	Closed	Closed	Closed	Closed	Open
Hoh	298	Closed	Closed	Concern for shifts in effort	Open	Open	Open	Open
Quillayute	1722	Closed	Concern for shifts in effort, Not accounting for tributary specific goals	Open	Open	Open	Open	Open

↗ Concern for shifts in effort

⌘ Not accounting for tributary specific goals (diversity/distribution)

\* Final regulations require comanager agreement

\*\* Does not account for illegal catch

\*\*\* Does not account for overforecasting

Open to Fishing
Closed to Fishing



# Analysis of Options

System	Sport Impact Limit	Full Closure	Status Quo	No Bait, No April	Fish from boat reduced days	Fish from boat in select waters	No Bait, No April, Reduced hours	Reduced days
Willapa	353	Red	Red	Green	Green	Red	Red	Green
Chehalis	198	Red	Red	Red	Red	Red	Red	Red
Humptulips	61	Red	Red	Red	Red	Red	Red	Green
Upper Quinault	388	Red	Red with ↗	Green	Green	Green	Green	Green
Queets/Clearwater	198	Red	Red	Red	Red	Red	Red	Green
Hoh	298	Red	Red	Green with ↗	Green	Green	Green	Green
Quillayute	1722	Red	Red with ↗ and ⚡	Green	Green	Green	Green	Green

↗ Concern for shifts in effort

⚡ Not accounting for tributary specific goals (diversity/distribution)

\* Final regulations require comanager agreement

\*\* Does not account for illegal catch

\*\*\* Does not account for overforecasting

Open to Fishing
Closed to Fishing



# Analysis of Options

System	Sport Impact Limit	Full Closure	Status Quo	No Boat, No bait, No April	Fish from boat reduced days	Fish from boat in select waters	No Bait, No April, Reduced hours	Reduced days
Willapa	353							
Chehalis	198							
Humptulips	61							
Upper Quinault	388		↗					
Queets/Clearwater	198							
Hoh	298			↗				
Quillayute	1722		↗ ⌘					

↗ Concern for shifts in effort

⌘ Not accounting for tributary specific goals (diversity/distribution)

\* Final regulations require comanager agreement

\*\* Does not account for illegal catch

\*\*\* Does not account for overforecasting

Open to Fishing

Closed to Fishing



# Analysis of Options: Hatchery Directed Fisheries

**Goal:** Design fisheries that meet management objectives and provide opportunity to harvest hatchery origin steelhead where conservation concern is greatest.

**Strategy:** Focus available creel around highest priority fisheries and monitor impacts with high precision and accuracy in-season.

Special considerations:

- Tribal co-management
- Limited monitoring resources
- Increased potential for early-closures





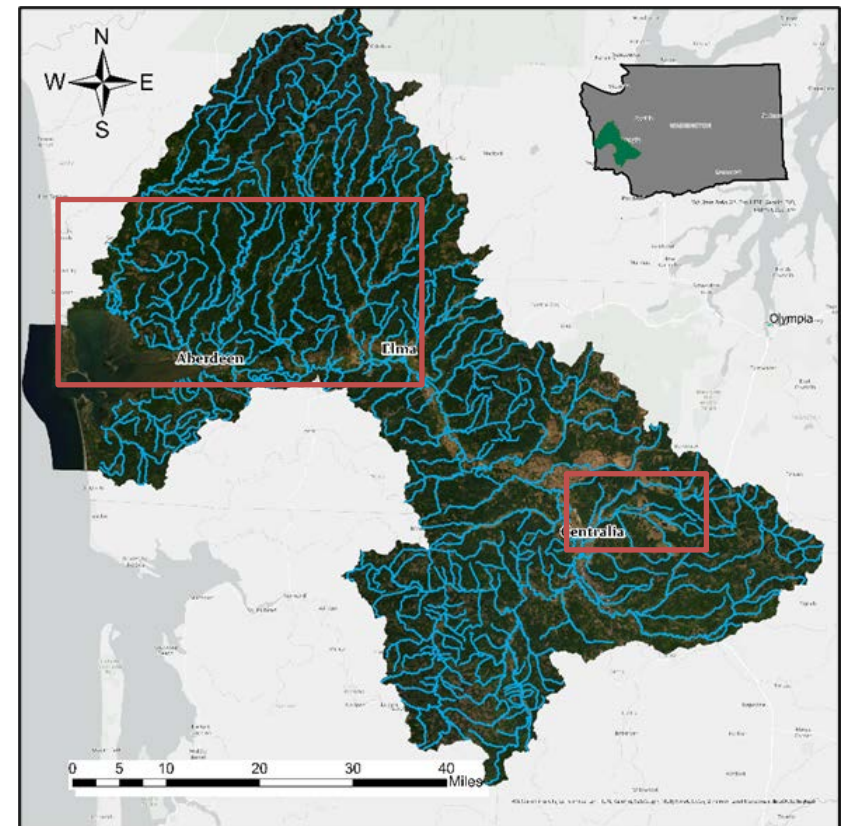
# Analysis of Options: Hatchery Directed Fisheries

Forecasted Sport Impact Limit

Tributary	Forecasted Sport Impact Limit
Hoquiam	9
Wishkah	11
Wynoochee	39
Satsop	58
Cloquallum	11
Black R.	1
L. Chehalis & Tribs.	6
U. Chehalis Mains.	10
Skookumchuck	9
Newaukum	21
U. Chehalis & Tribs.	6
EF Chehalis	7
SF Chehalis	7
WF Chehalis	3

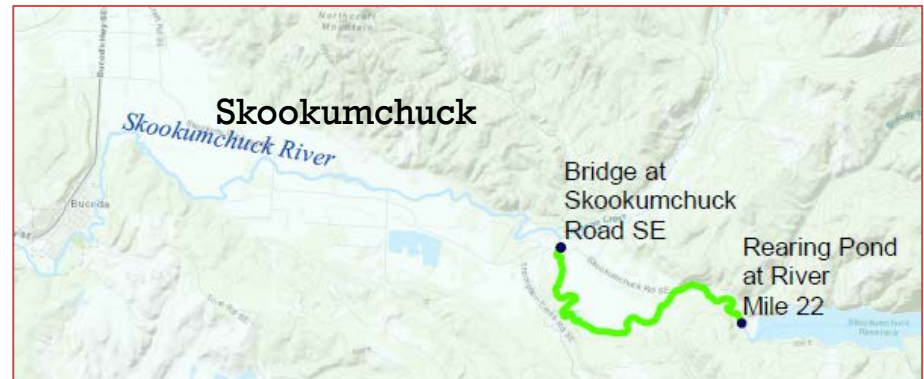
\*Does not account for mixed “stock” encounters

## Chehalis Watershed



# Analysis of Options: Hatchery Directed Fisheries

Tributary	Forecasted Sport Impact Limit
Hoquiam	9
Wishkah	11
Wynoochee	39
Satsop	58
Cloquallum	11
Black R.	1
L. Chehalis & Tribs.	6
U. Chehalis Mains.	10
Skookumchuck	9
Newaukum	21
U. Chehalis & Tribs.	6
EF Chehalis	7
SF Chehalis	7
WF Chehalis	3



\*Does not account for mixed “stock” encounters

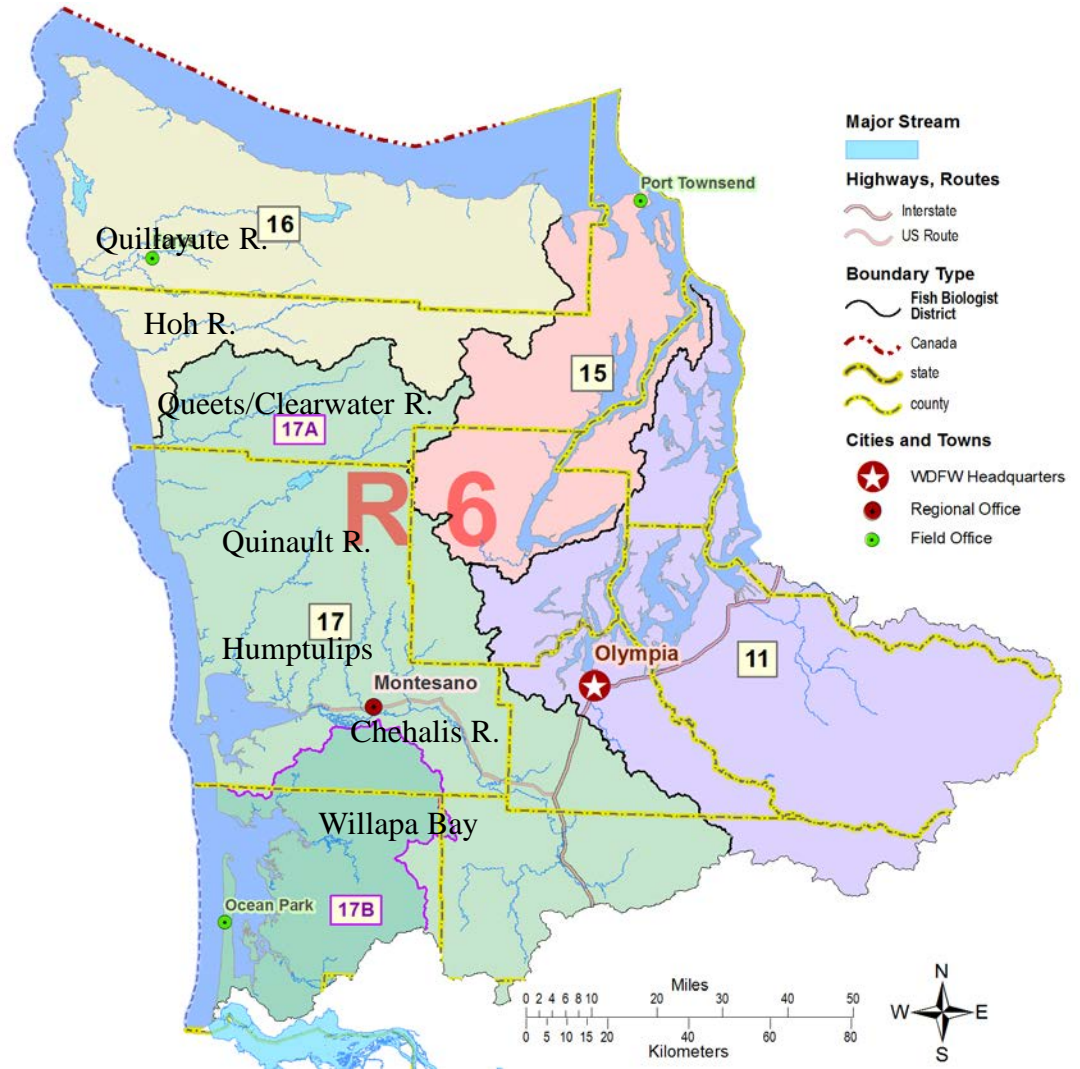


# Agenda

2020/21 review

2022-23 management framework  
regulatory options

Coastal Steelhead Proviso

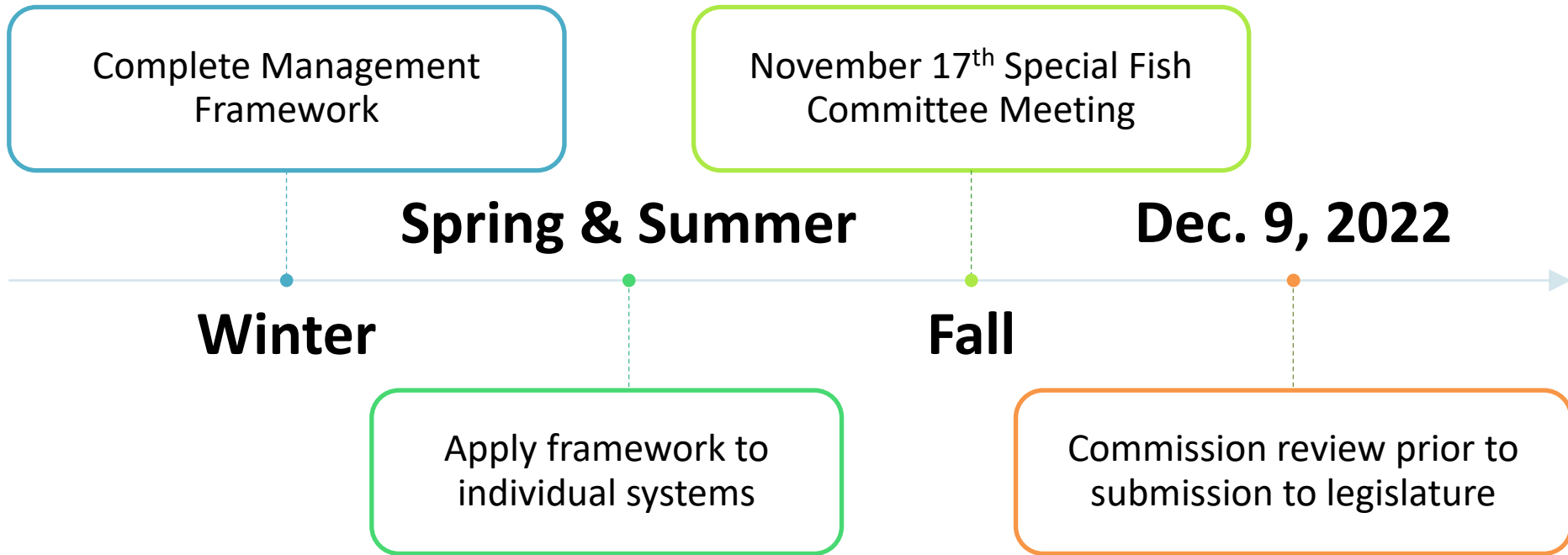


# Proviso Language

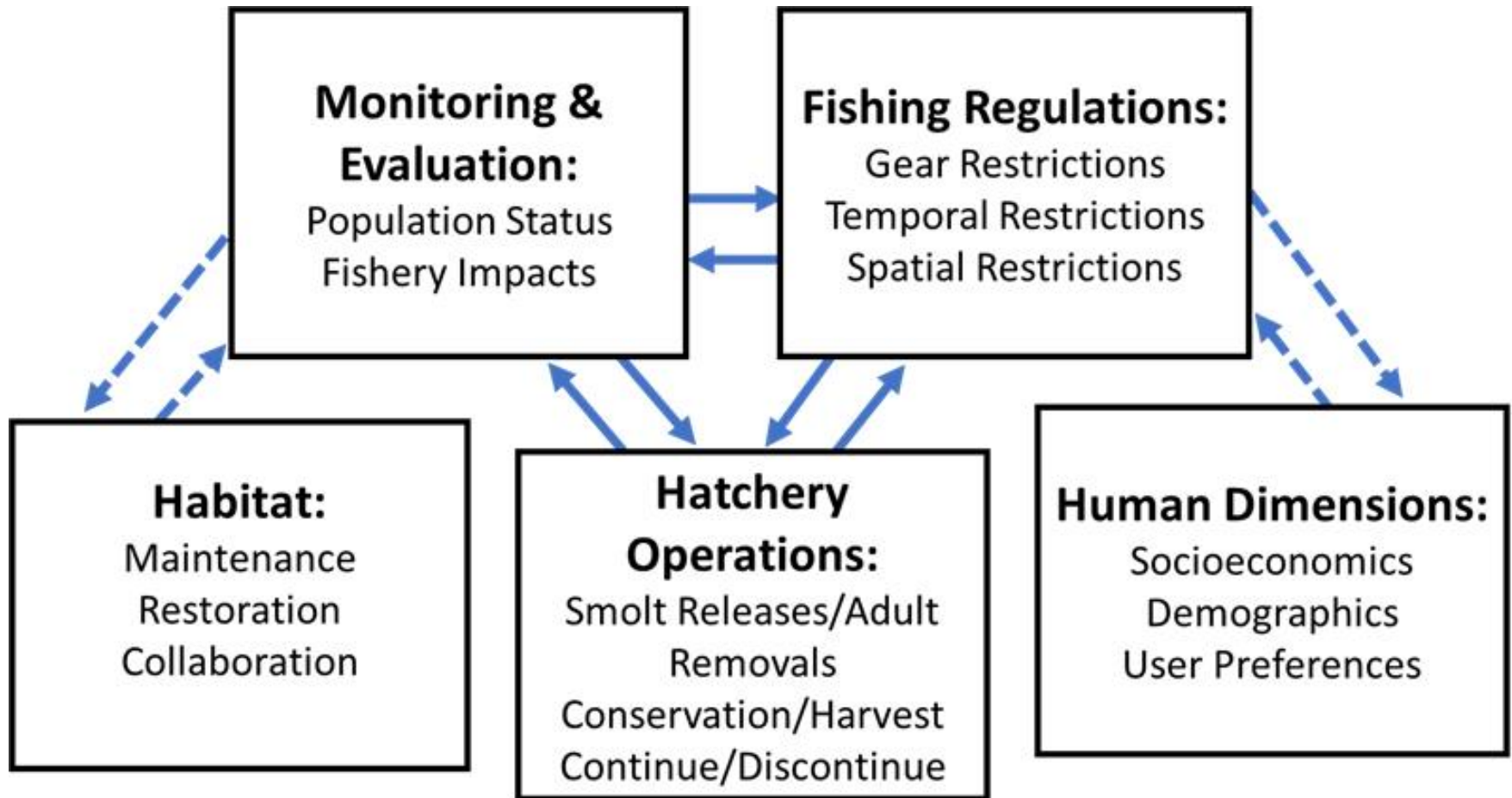
*\$200,000 of the general fund—state appropriation for fiscal year 2022 and \$100,000 of the general fund—state appropriation for fiscal year 2023 are provided solely for the department to develop a plan to protect native and hatchery produced steelhead for each river system of Grays harbor, Willapa bay, and coastal Olympic peninsula. The plan must adequately protect those fisheries for healthy runs year-after-year as well as provide reasonable fishing opportunities. The plan must include active stakeholder input and include an outreach strategy sufficient to keep conservation and angler interests well informed of proposed changes in advance of annual fishing seasons. The plan must be reported to the appropriate committees of the legislature by December 1, 2022.*



# Coastal Steelhead Proviso: Timeline



# Coastal Steelhead Proviso: Subject Areas



# Coastal Steelhead Proviso: Stakeholder Input

Lee Geist

Jessica Helsley

Caleb Hitzfeld

Bob Kratzer

Geoff McMichael

Roy Morris

Luke Probasco

Chris Ringlee

Jason Rolfe

Rich Simms

Jonathan Stumpf

Mara Zimmerman



# Public Feedback

- Plan provides optimism
- Appreciation for timeline and implementation plan
- Glad to see budget associated
- Communication and effort from staff
- Integrates the best available science
- Doesn't go far enough
- Lack of comanager involvement
- Concern for how the plan will affect hatchery operations
- There wasn't enough time to discuss everything that folks wanted to discuss
- Desire for continued feedback to public on progress of implementation





# Budget: \$5.9 million/biennium\*

- **This budget supports:**
  - 21.3 FTEs
  - Spawner abundance estimates coastwide
  - Sport fishery monitoring coastwide
  - SONAR team
  - Coastwide Research
  - Implementation and watershed specific RMPs
  - Biological sampling
  - Equipment and maintenance

\*budget detail included . . . . .



# Budget

- **Failure to fund CSPIP would:**
  - Lead to failure to implement the Proviso
  - Continue or increase uncertainty regarding coastal steelhead fishery impacts, which could limit fishery sustainability and opportunity
  - Hinder the development of Regional Management Plans, including long-term coastal steelhead conservation objectives and Management Strategy Evaluations
  - Slow the pace of critical scientific research needed to inform steelhead fishery management



# Questions

