

4. Lands 20/20 Review

Cynthia Wilkerson

Lands Division Manager, Wildlife Program

Lisa Coffman

Lands 20/20 Coordinator



Lands 20/20 Introduction



*Lands 20/20: A Clear Vision for the Future
“Protecting our unique quality of life by
maintaining a citizen-supported portfolio of lands
to sustain Washington’s diverse fish and wildlife
and their habitats into the next century.”*

Permanent Agency Commitment



Today’s Agenda:

- 1. Why?*
- 2. How?*
- 3. What?*
- 4. Next Steps*



Why Does WDFW Buy Land?

Protecting Land and Water for Wildlife and People



In service to our Mission

RCW 79a.15 – Acquisition of Habitat Conservation and Outdoor Recreation Lands

*“It is therefore the **policy of the state to acquire as soon as possible the most significant lands for wildlife conservation and outdoor recreation purposes before they are converted to other uses**, and to develop existing public recreational land and facilities to meet the needs of present and future generations.”*

Specifically, to:

- ***Conserve and restore the diversity of Washington’s fish and wildlife species and habitats***
- ***Enhance sustainable fishing, hunting and other wildlife-related outdoor opportunities***
- ***Improve management of current WDFW Lands***
- ***Preserve working lands for agriculture, forestry, and other sectors of the outdoor economy, particularly in rural areas***



Questions WDFW Asks

Protecting Land and Water for Wildlife and People



- *Willing seller*
- *Partnerships*
- *Best Conservation Alternatives?*
- *Conservation easements?*
- *Long-term opportunities and ecological values*
- *Larger, contiguous habitats*
- *Ecological and social importance*
- *Access/recreation value*
- *Local community value*



Strategic Acquisition Priorities

Goal 1: Conserve and protect native fish and wildlife:

Aquatic Habitats

- *Freshwater wetlands*
- *Instream (stream and associated floodplains)*
- *Marine*
- *Instream flow/ Water Rights*



Strategic Acquisition Priorities

Goal 1: Conserve and protect native fish and wildlife:

Critical Habitat for Specific Species

- *Winter range for ungulates in eastern WA*
- *Priority habitat for ESA listed salmon, steelhead and bull trout*
- *Listed species: pygmy rabbit, sage and sharp-tailed grouse*
- *Columbian white-tailed deer, Western gray squirrels, nest sites for Golden Eagles or Ferruginous hawks*



Strategic Acquisition Priorities

Goal 1: Conserve and protect native fish and wildlife:

Terrestrial Habitats

- *Old-growth forests east Cascades/west, Mature Forests*
- *Eastside mature pine forest or oak/pine association and Oregon white oak woodlands*
- *Shrubsteppe, Eastside Steppe, Juniper Savannah*
- *Herbaceous Balds, Westside Prairie*
- *Channeled Scablands*
- *Connectivity*
- *Climate Change Resilience*



Strategic Acquisition Priorities

Goal 2: Provide sustainable fishing, hunting and other wildlife-related recreational and commercial experiences

- *Provide access to water and lands already held in public ownership*
- *Secure private lands historically open to public recreation*
- *Secure access to marine shorelines for fishing and shellfish harvest*
- *Expand freshwater boat access (Lower Spokane, Lower Columbia)*
- *Secure lands that provide quality hunting opportunities and wildlife watching opportunities.*



Strategic Acquisition Priorities

Goal 3: Promote a healthy economy, protect community character, maintain an overall high quality of life, and deliver high quality customer service

Goal 4: Build an effective and efficient organization by supporting our workforce, improving business processes, and investing in technology



- *Prevent or ameliorate wildlife damage or conflicts*
- *Provide or maintain administrative access*
- *Achieve shared goals with partners (open spaces as part of GMA/SMA, community character)*
- *Secure private in-holdings to support management of existing WDFW-managed lands*
- *Secure access to lands needed to maintain hatchery intake structure or other necessary hatchery infrastructure*



Acquisition Steps

Scoping
and Need

Lands 20/20

Funding

Land
Transaction

Integrating
Ownership



Acquisition Steps

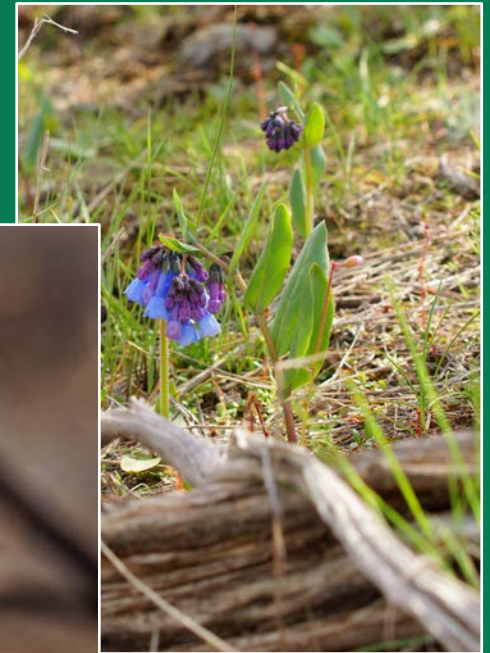
Scoping
and Need

Lands 20/20

Funding

Land
Transaction

Integrating
Ownership



Lands 20/20 Policy and Procedure

Policy 6010 Acquiring and Disposing of Real Property

- All acquisitions require Lands 20/20 assessment and approval
- Exempt vs Expedited Review

Lands 20/20 Standard Operating Procedure

- Statewide coordinator/ Lands Agents in Regions
- Standard Application
- Cross-programmatic review in Regions
- Statewide Technical Review
- Tribal Consultation
- EMT Review
- Public Review
- Commission Briefing
- Director's Decision
- Approval lasts 6 years



Lands 20/20 Key Components

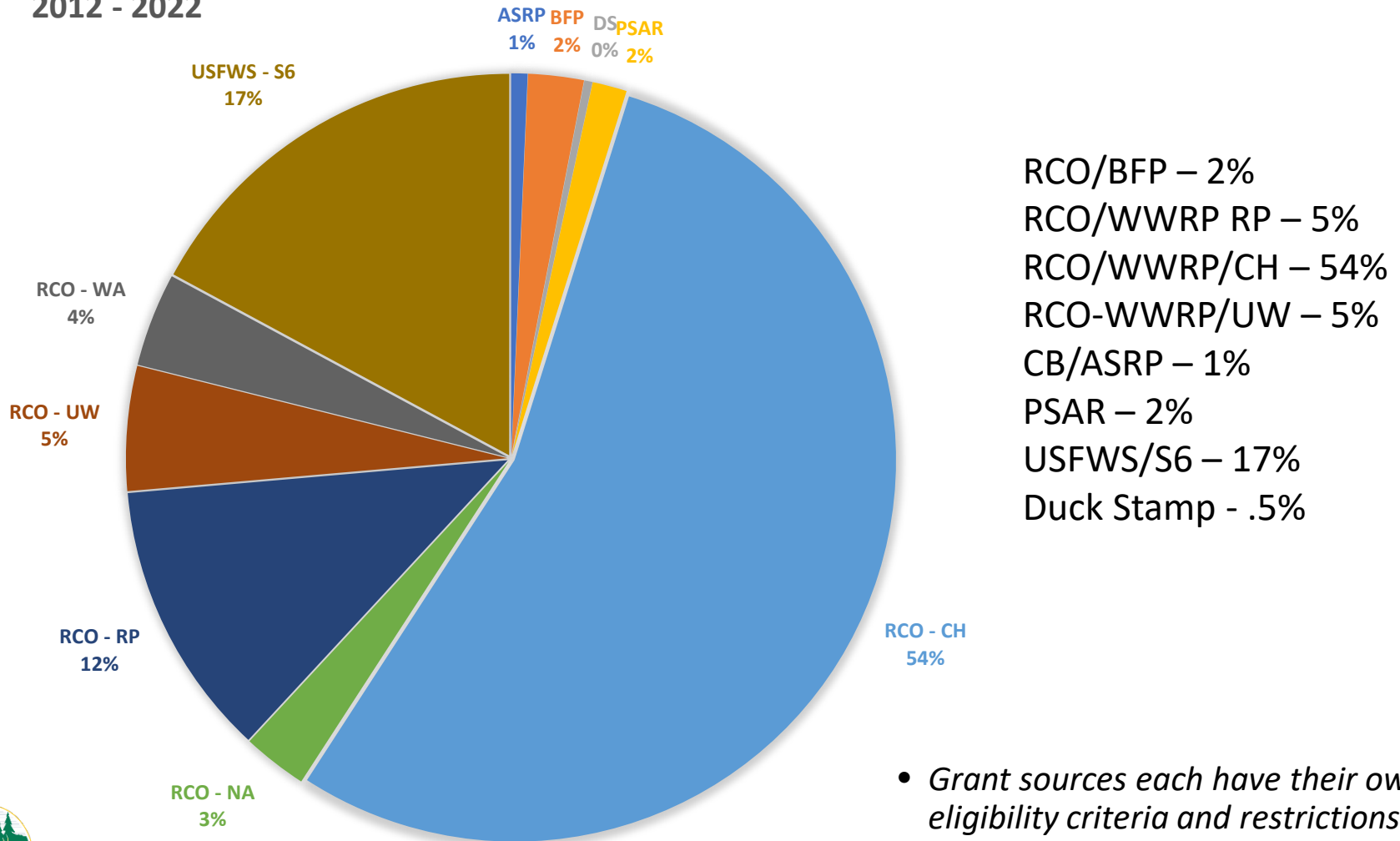


- *Fish and Wildlife, Habitat conservation value*
- *Landscape connectivity and restoration value*
- *Recreation value*
- *Threat of conversion*
- *Understanding key elements of ownership (water rights, fish passage, other management challenges)*
- *Outreach to tribes, local community, and public interests and perspectives*



Acquisition Funding Sources

CURRENT FUNDING TREND 2012 - 2022



- *Grant sources each have their own eligibility criteria and restrictions*



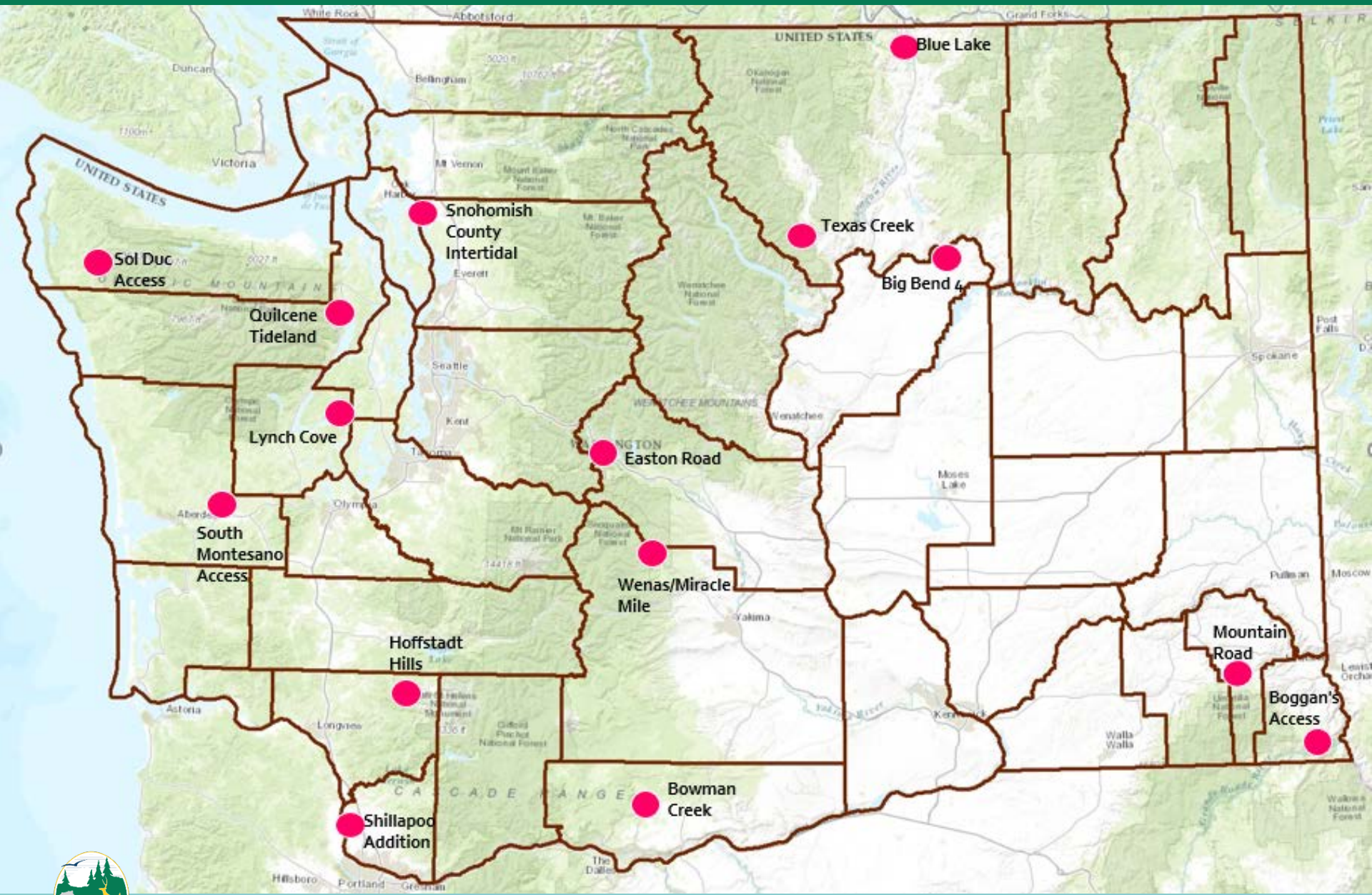
Lands Transaction Steps



- Letter of Intent
- Due Diligence:
 - Title review
 - Water rights review
 - Culvert review
 - RMAP review
 - Environmental site assessment
 - Baseline inventory
- Appraisal and Review Appraisal
 - Just Compensation
- Offer/negotiation
- Tribal consultation
- Commission Approval
- Open Escrow/Close
- Post-closing



2022 Lands 20/20 Projects

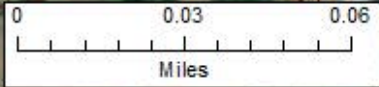
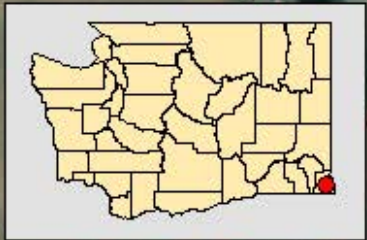


Boggan's Access Asotin County

1.1 acres, fee title

- Adjacent to WDFW Water Access
- Boat launch
- Additional parking
- Fishing
- Boating





Boggan's Water
Access/Fishing Easement



Grande Ronde River

Boggan's Access

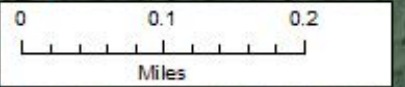
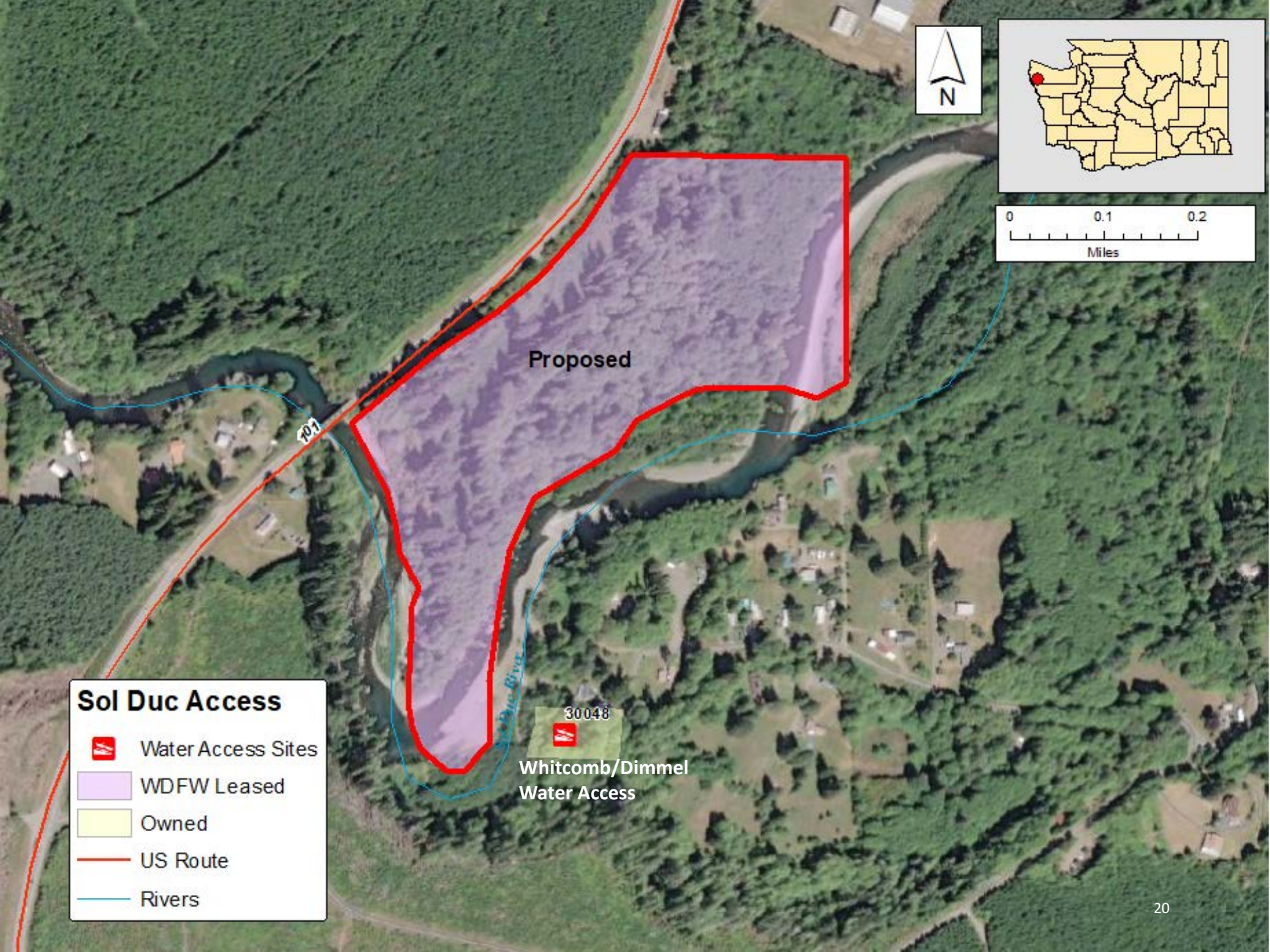
- County Parcels
- Easement
- State Route
- Roads
- Rivers

Sol Duc Access Clallam County

38.12 acres, fee title

- Water access
- Boating
- Fishing





Sol Duc Access

-  Water Access Sites
-  WDFW Leased
-  Owned
-  US Route
-  Rivers

Whitcomb/Dimmel
Water Access

30048

Proposed

101

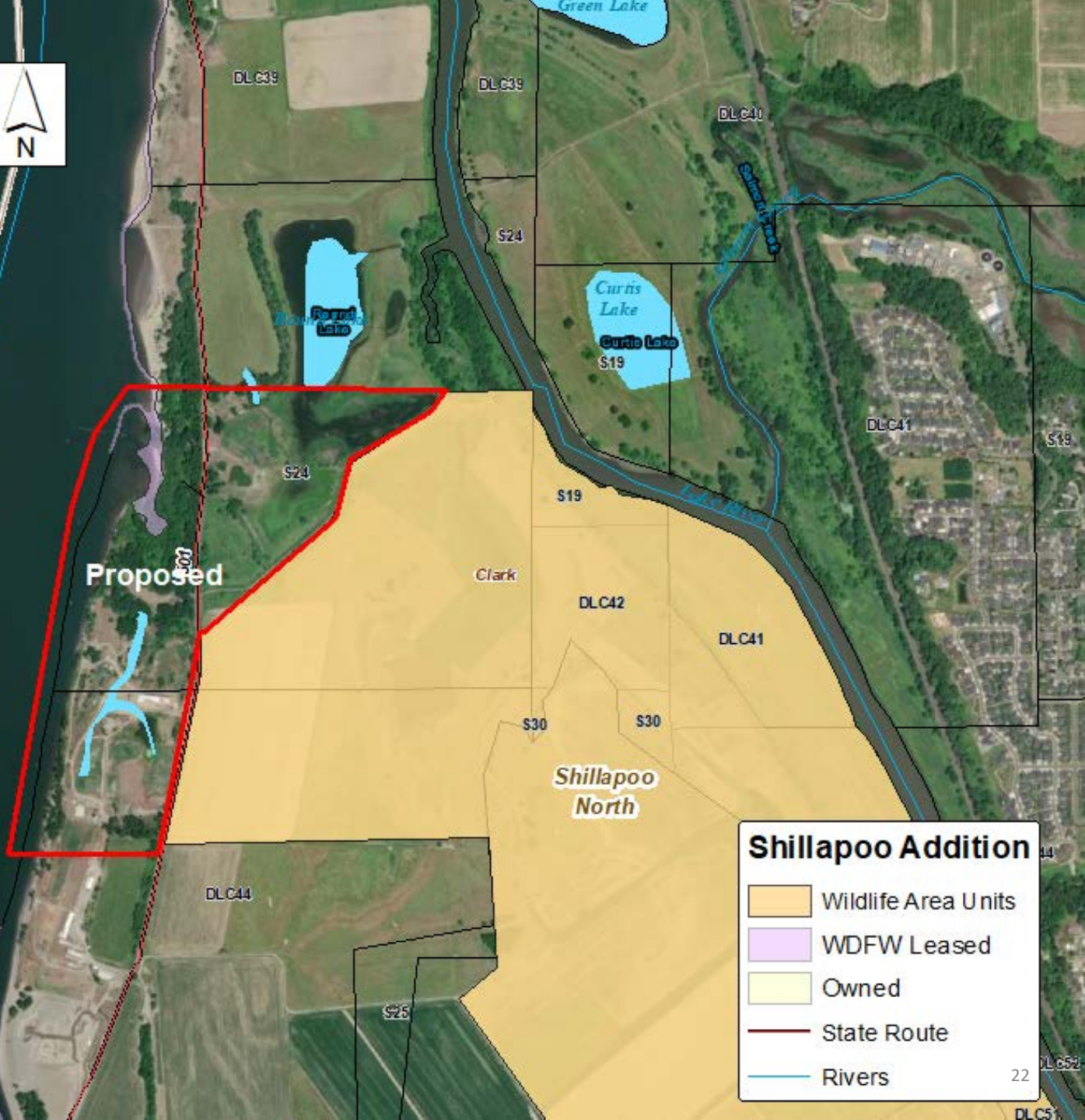
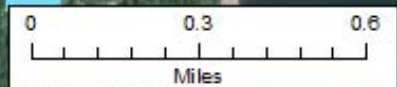
Sol Duc River

Shillapoo Addition Clark County

90 acres, fee title

- Shoreline and riparian habitats
- Salmonid restoration wetland habitat
- Hunting
- Fishing
- Wildlife viewing





Proposed

Shillapoo Addition

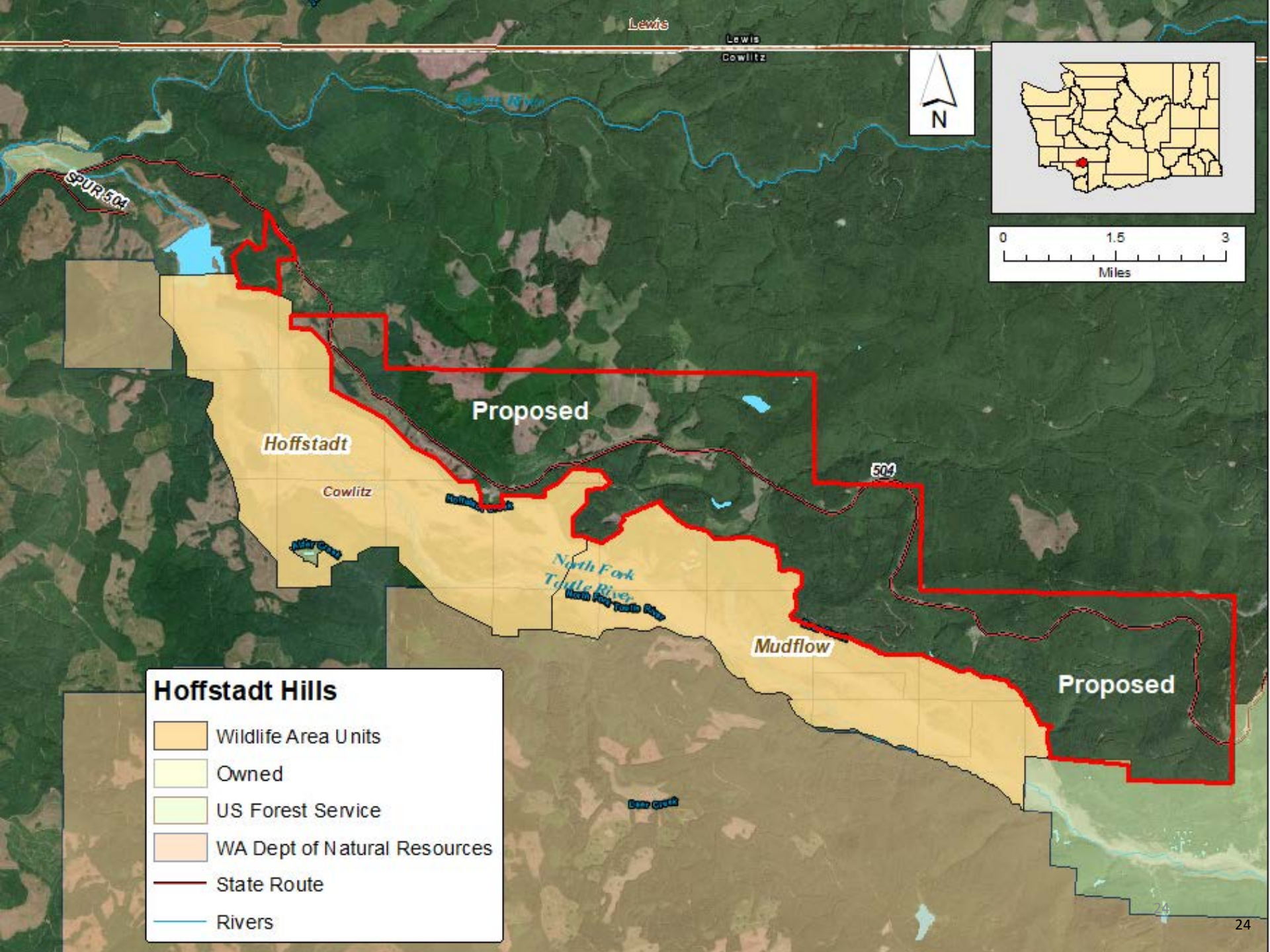
- Wildlife Area Units
- WDFW Leased
- Owned
- State Route
- Rivers

Hoffstadt Hills Cowlitz County

*Up to 7,300 acres, fee
title*

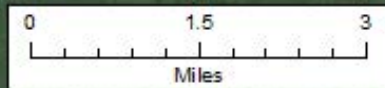
- Elk winter range habitat
- Steelhead and coho spawning and rearing areas
- 17 miles of stream and riparian habitat
- Diverse landscape
- Hunting,
- Wildlife viewing
- Fishing
- Hiking
- Horseback riding





Lewis

Lewis
Cowlitz



SPUR 504

Proposed

Hoffstadt

Cowlitz

504

North Fork
Tujila River

Mudflow

Proposed

Hoffstadt Hills

- Wildlife Area Units
- Owned
- US Forest Service
- WA Dept of Natural Resources
- State Route
- Rivers

Big Bend Phase 4 Douglas County

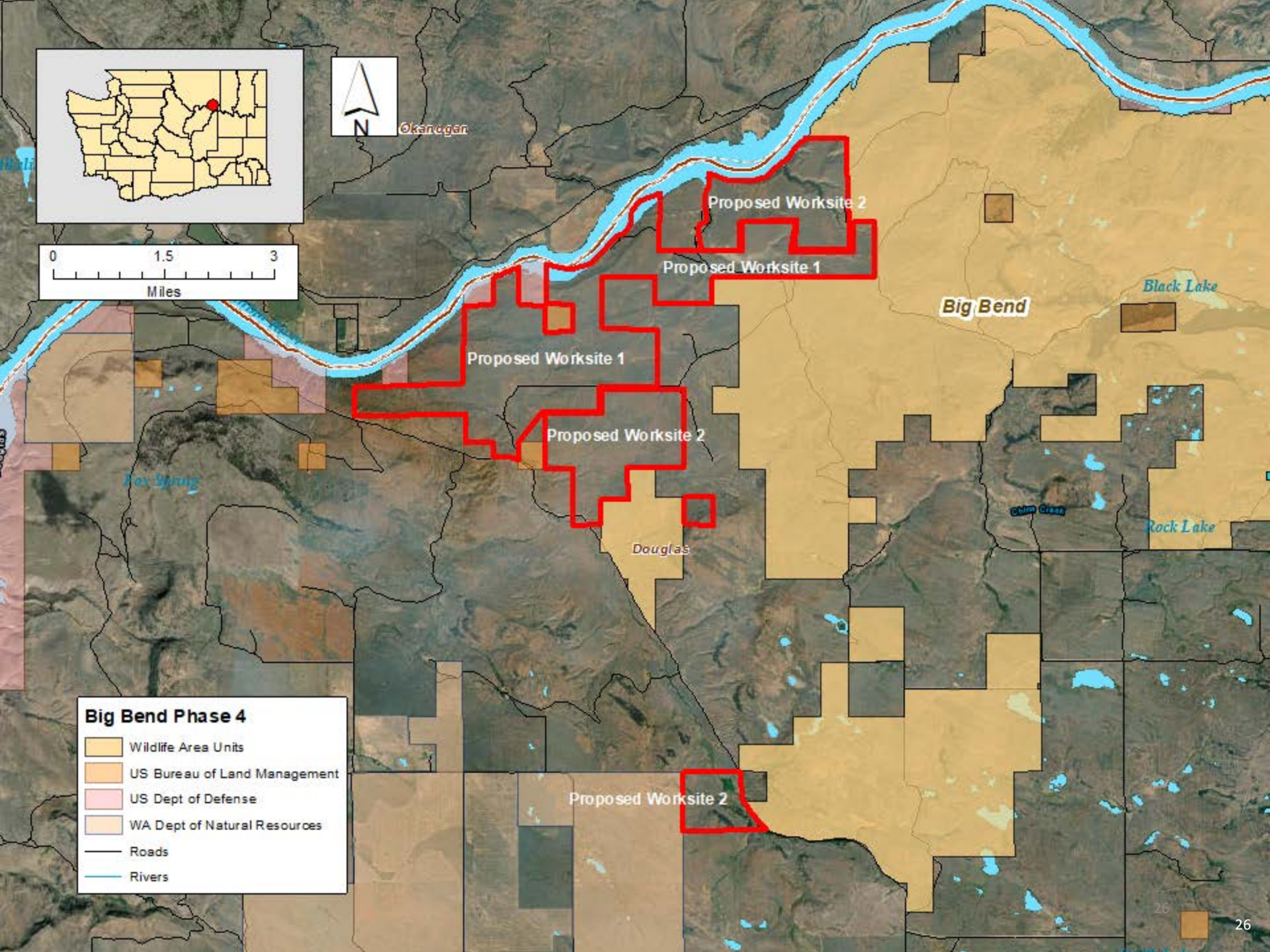
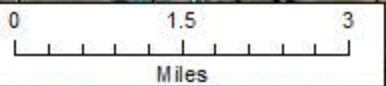
3,425 acres, fee title

- 2 separate worksites
- Sharp-tailed grouse
- Washington ground squirrel
- Golden eagle
- Protection of shrubsteppe and riparian habitats
- Mule deer
- Turkey
- Waterfowl
- Fishing
- Hunting





Okanogan



Proposed Worksite 2

Proposed Worksite 1

Proposed Worksite 1

Proposed Worksite 2

Douglas

Big Bend

Black Lake

Fox Spring

Chim Grass

Rock Lake

Big Bend Phase 4

- Wildlife Area Units
- US Bureau of Land Management
- US Dept of Defense
- WA Dept of Natural Resources
- Roads
- Rivers

Proposed Worksite 2


Mountain Road Garfield County


285 acres, fee title

- Existing elk fence
- Blue Mountain elk herd critical calving area.
- Bighorn sheep
- Western toad
- Lewis' woodpecker
- Hunting
- Hiking
- Wildlife viewing

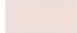



Mountain Road

 County Parcels

 Owned

OWNER

 State Government

 Roads

W.T. Wooten Wildlife Area

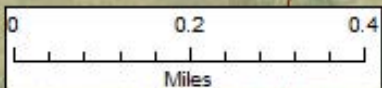
Garfield

Proposed

WDFW Elk Fence

Yamston Creek

W.T. Wooten Wildlife Area

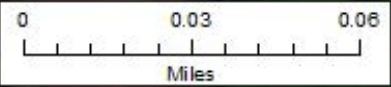


South Montesano Access Grays Harbor County


1 acre, fee title

- Expand the water access site
- Parking
- Fishing
- Boating recreation





South Montezano Access

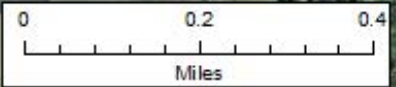
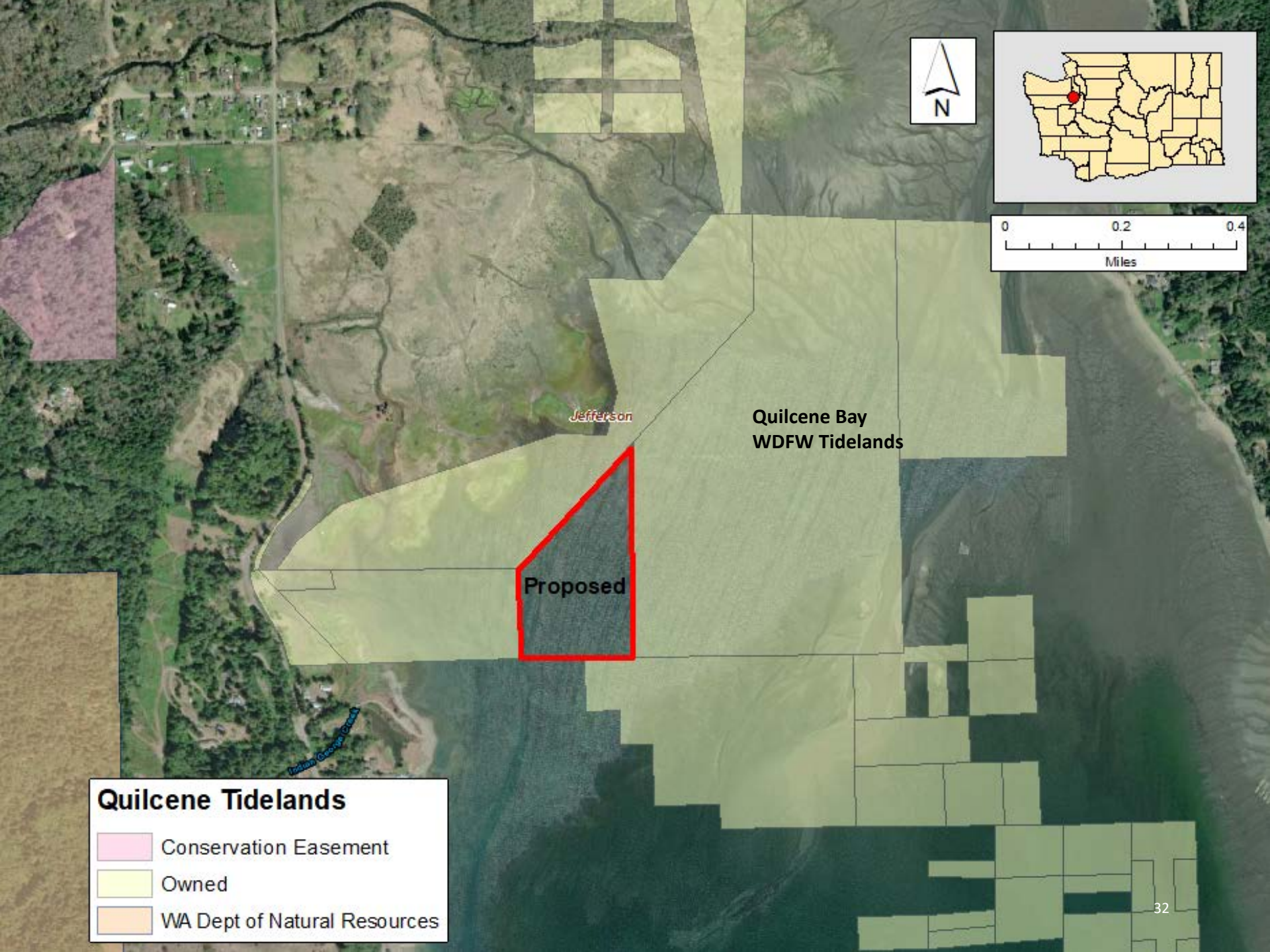
-  Water Access Sites
-  Agreement
-  WDFW Leased
-  Owned
-  State Route
-  Rivers

Quilcene Tidelands Jefferson County

15 acres, fee title

- Tideland
- Shellfish harvest
- Tideland exploration
- Waterfowl hunting
- Wildlife viewing






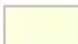

Jefferson

Quilcene Bay
WDFW Tideland

Proposed

Indian Grove Creek

Quilcene Tideland

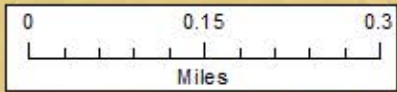
-  Conservation Easement
-  Owned
-  WA Dept of Natural Resources

Easton Hill Wildlife Crossing Kittitas County

22.92 acres, fee title

- Wildlife crossing area
- Conserve wildlife and habitat connectivity
- Mule deer
- Rocky Mountain elk
- Gray wolf
- Not for recreation





Yakima River

240' Wildlife Crossing Structure



Proposed

Easton Hill Wildlife Crossing

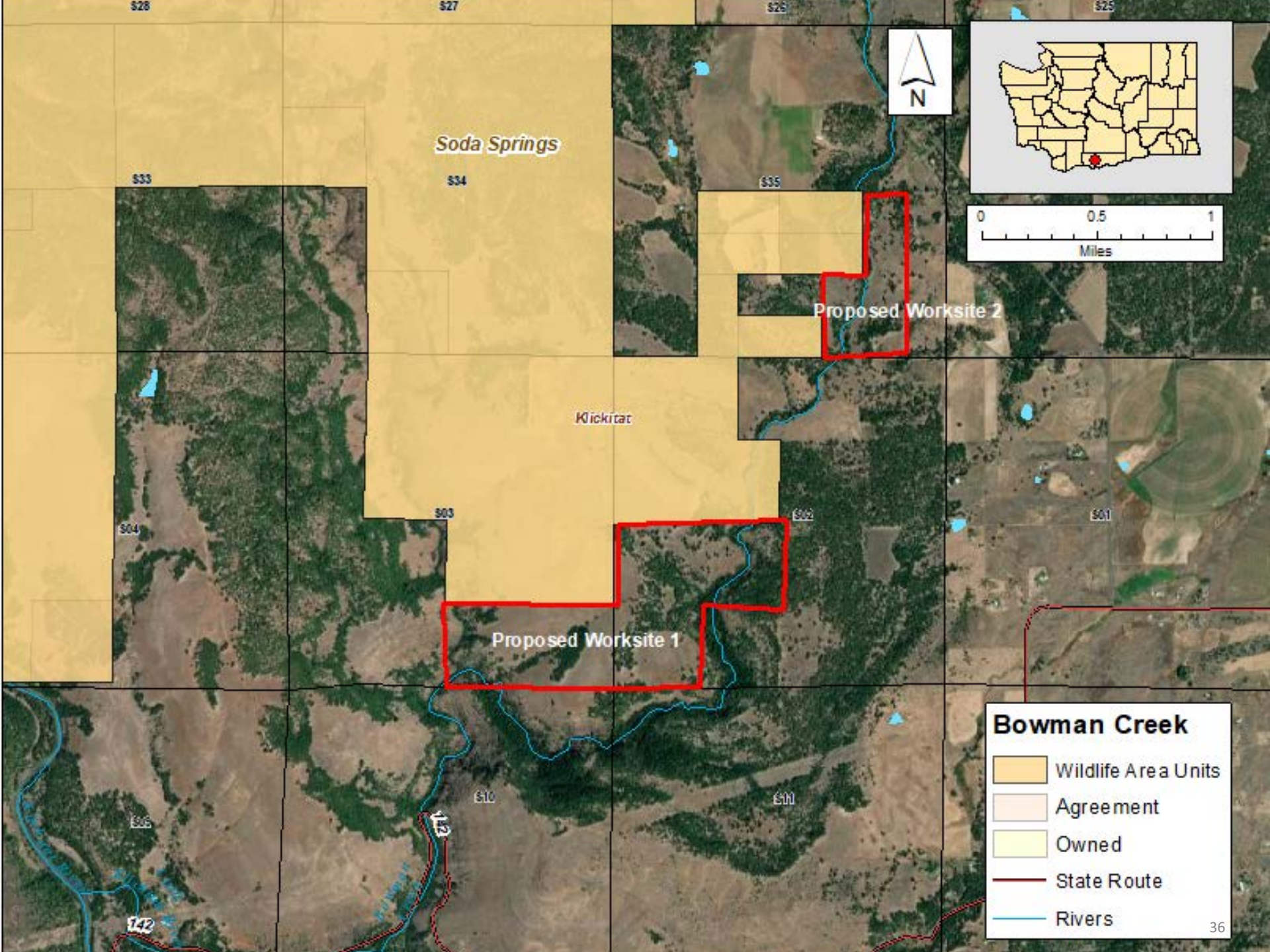
- Wildlife Area Units
- Owned
- Private, Other
- US Forest Service
- WA State Parks and Recreation Commission
- Interstate

Bowman Creek Klickitat County

260 acres, fee title

- 2 separate worksites
- Perennial stream
- Riparian
- Fish
- Mussels
- Western gray squirrel
- Peregrine falcon
- Hunting
- Fishing
- Wildlife viewing





Soda Springs

Proposed Worksite 2

Kickitat

Proposed Worksite 1

Bowman Creek

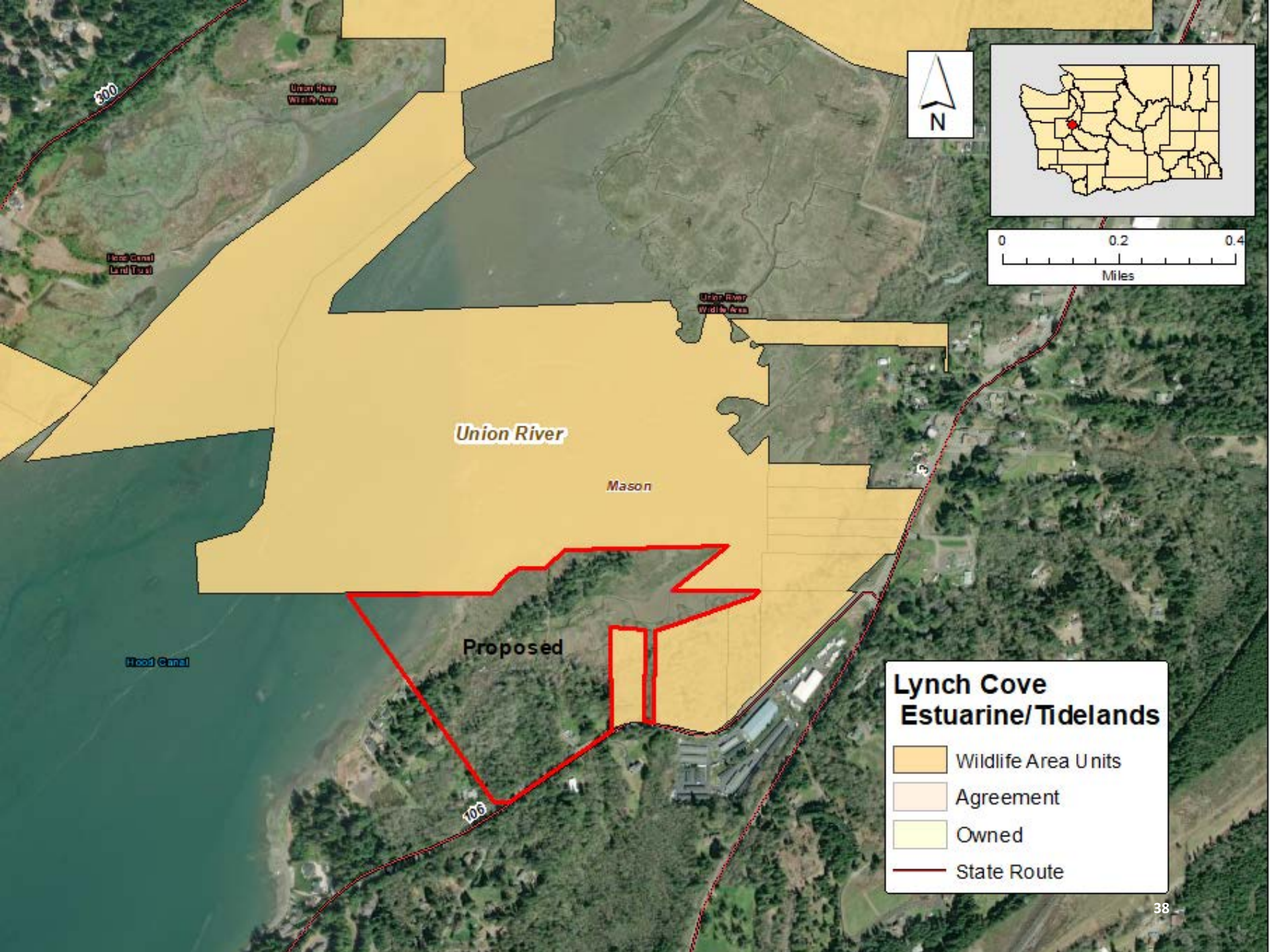
- Wildlife Area Units
- Agreement
- Owned
- State Route
- Rivers

Lynch Cove Estuarine/Tidelands Mason County

Up to 64 Acres, fee title

- 4 separate worksites
- Estuarine habitat
- Summer chum
- Puget Sound steelhead
- Large waterfowl concentration
- Waterfowl hunting
- Bird watching
- Kayaking
- Wildlife viewing





300

Union River
Wildlife Area

Hood Canal
Land Trust

Union River
Wildlife Area

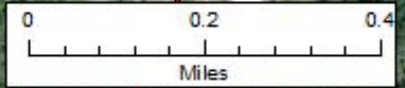
Union River

Mason

Hood Canal

Proposed

106



**Lynch Cove
Estuarine/Tidelands**

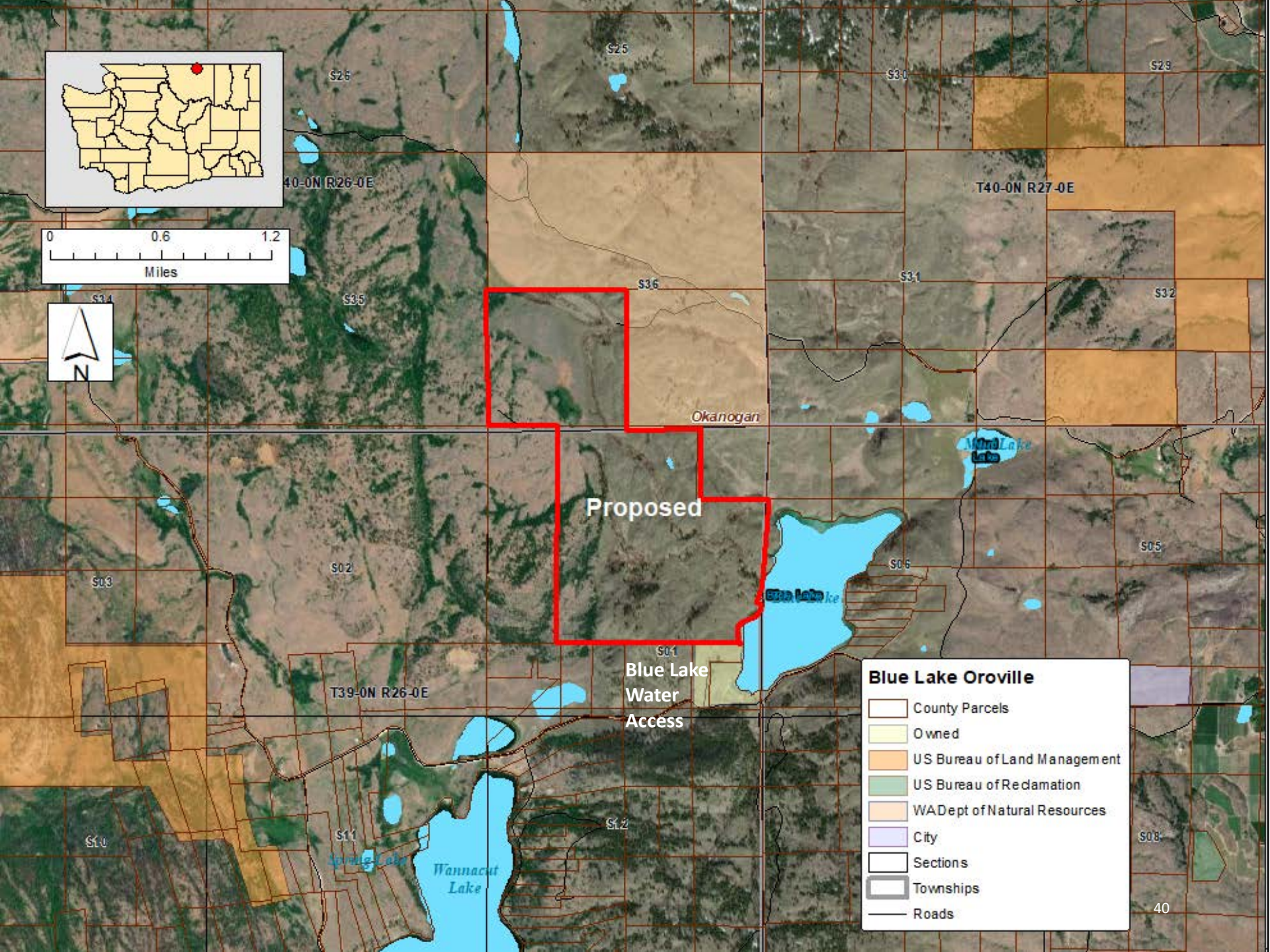
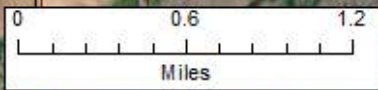
-  Wildlife Area Units
-  Agreement
-  Owned
-  State Route

Blue Lake Oroville Okanogan County

479 acres, fee title

- Adjacent to existing WDFW Water Access Area
- Lakefront
- Shrubsteppe
- Riparian
- Ponderosa pine habitat
- Mule deer
- Shrubsteppe obligates
- Gray wolf
- Hunting
- Fishing
- Water sports
- Wildlife viewing





Proposed

Blue Lake
Water
Access

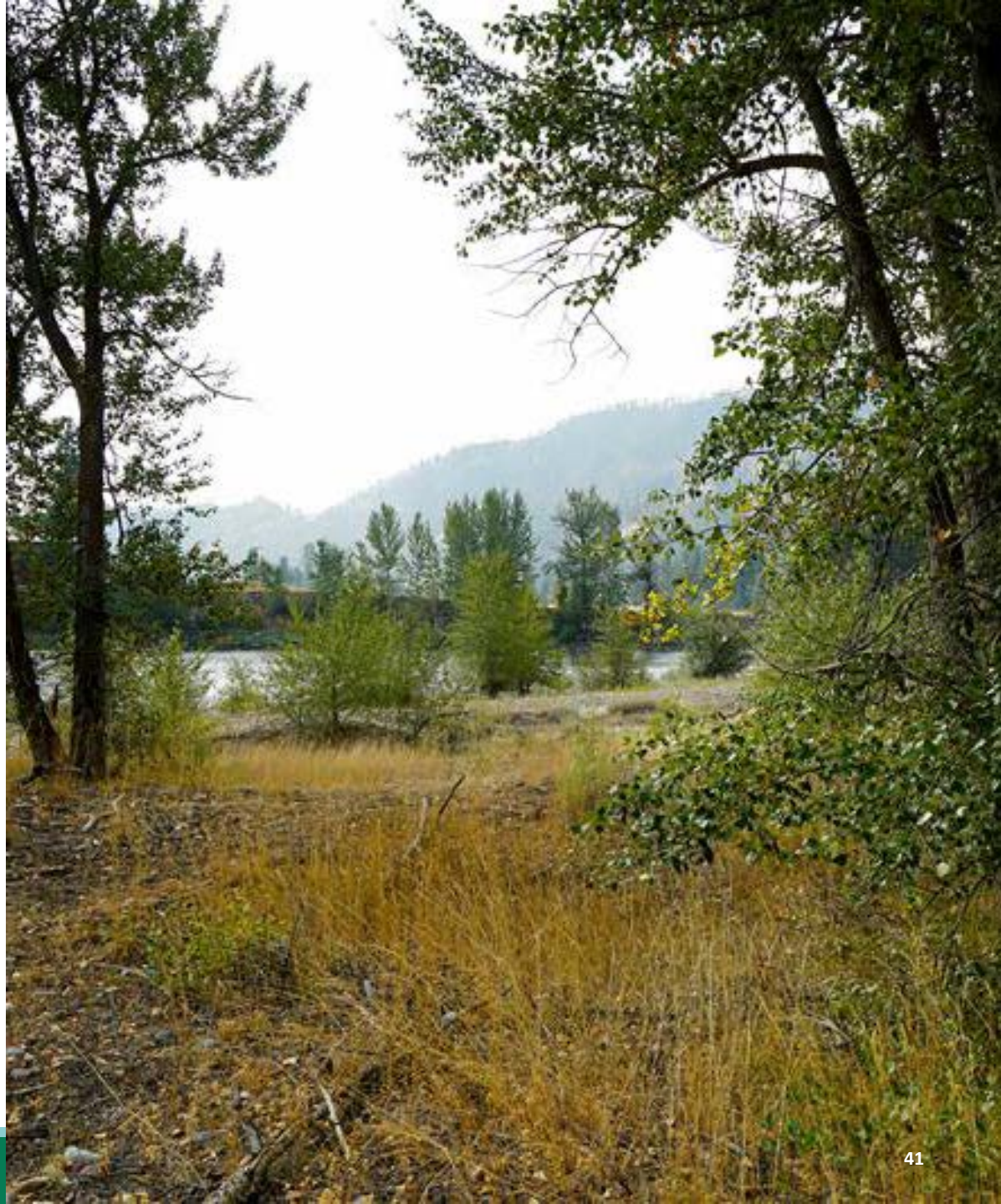
Blue Lake Oroville

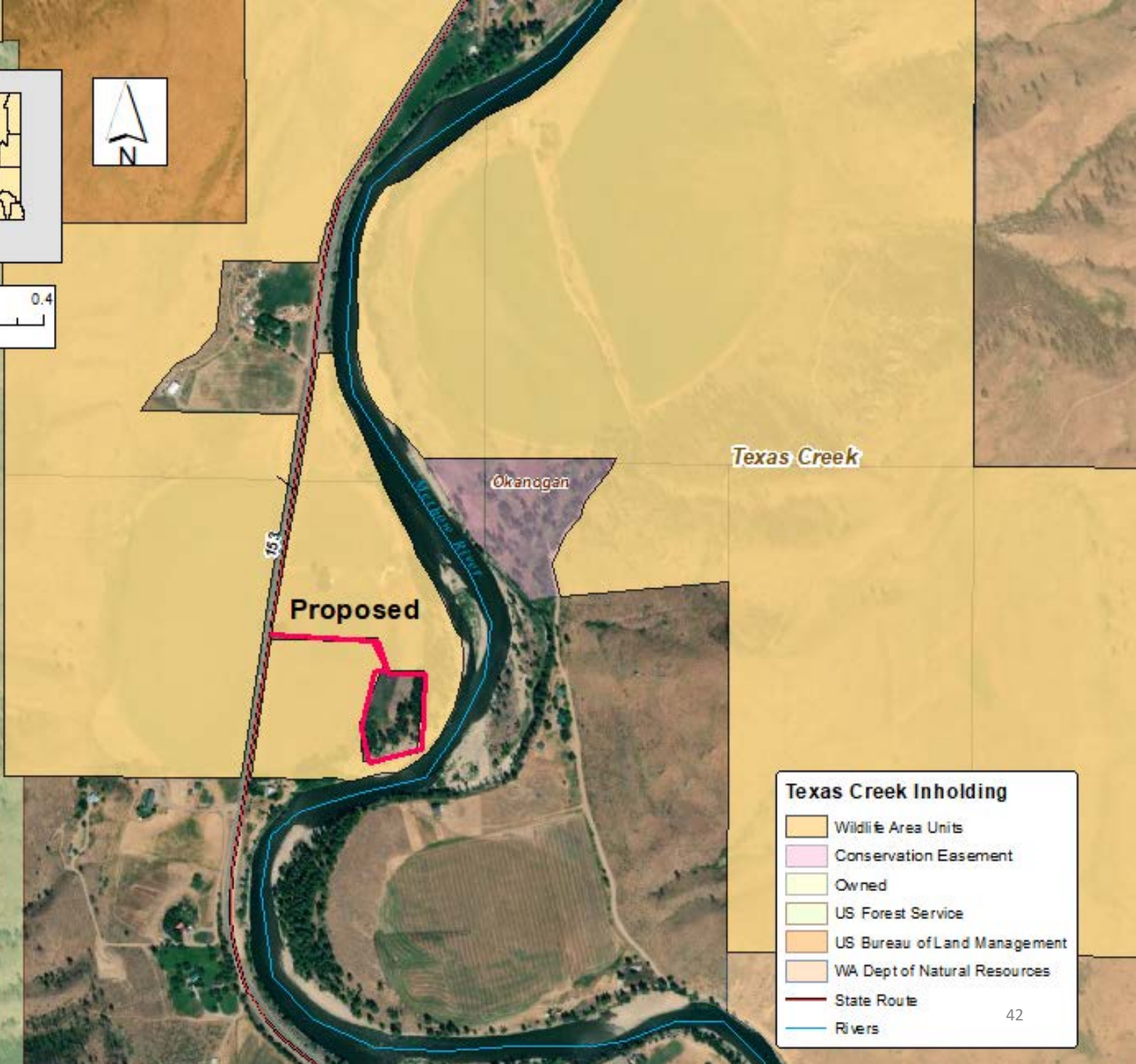
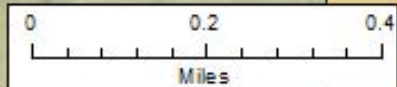
- County Parcels
- Owned
- US Bureau of Land Management
- US Bureau of Reclamation
- WA Dept of Natural Resources
- City
- Sections
- Townships
- Roads

Texas Creek Inholding Okanogan County

3.4 acres, fee title

- Riparian
- Woodland
- Shrubland
- Spring chinook
- Steelhead
- Fishing
- Wildlife viewing





Texas Creek

Okangon

153

Proposed

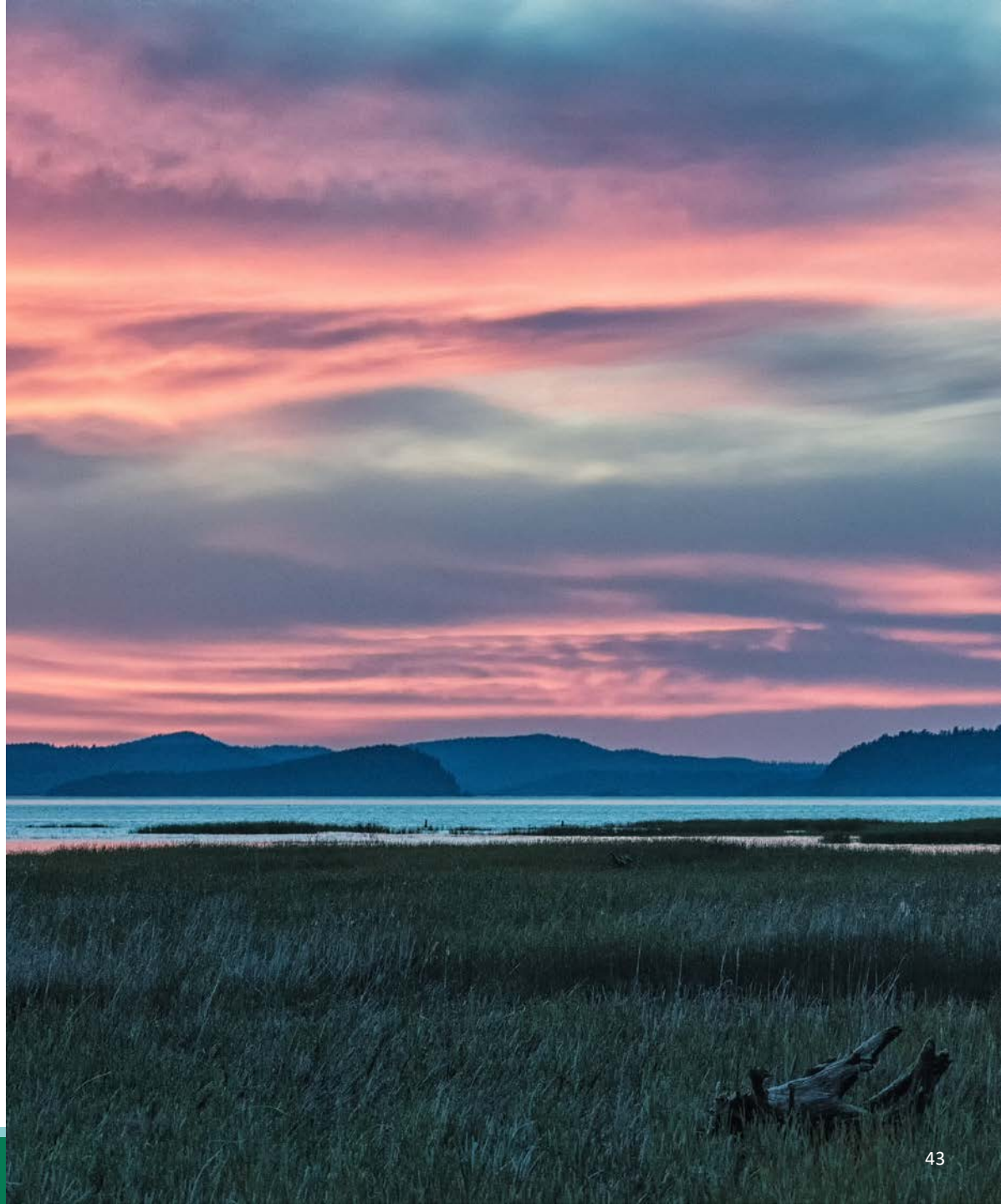
Texas Creek Inholding

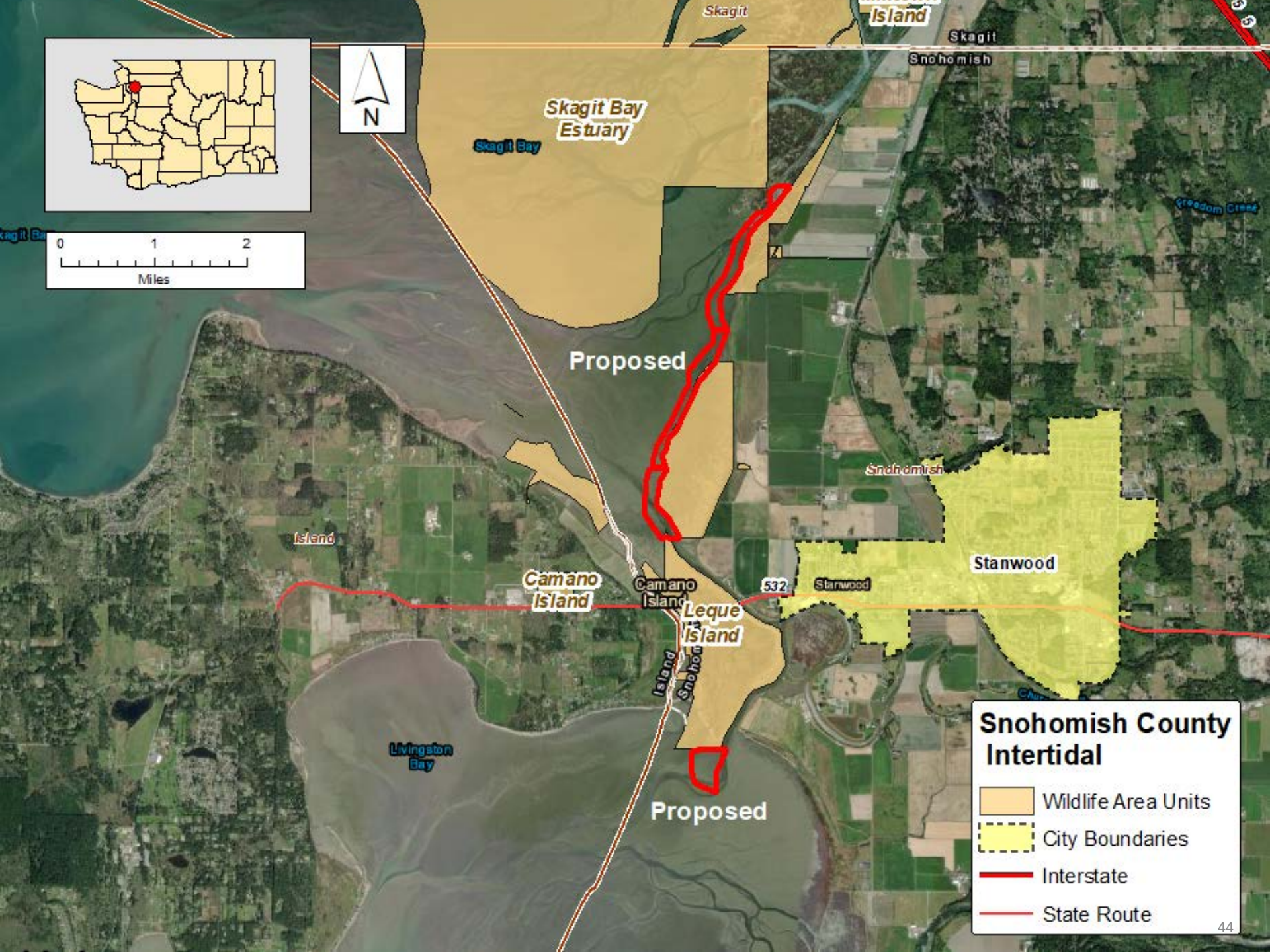
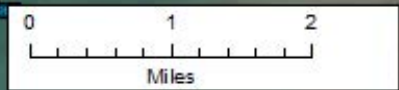
- Wildlife Area Units
- Conservation Easement
- Owned
- US Forest Service
- US Bureau of Land Management
- WA Dept of Natural Resources
- State Route
- Rivers

Snohomish County Intertidal Snohomish County

166.02 acres, fee title

- Connecting intertidal
- Chinook salmon
- Bull trout
- Waterfowl
- Shorebirds
- Hunting
- Wildlife viewing
- Tidal exploration
- Kayaking





Snohomish County Intertidal

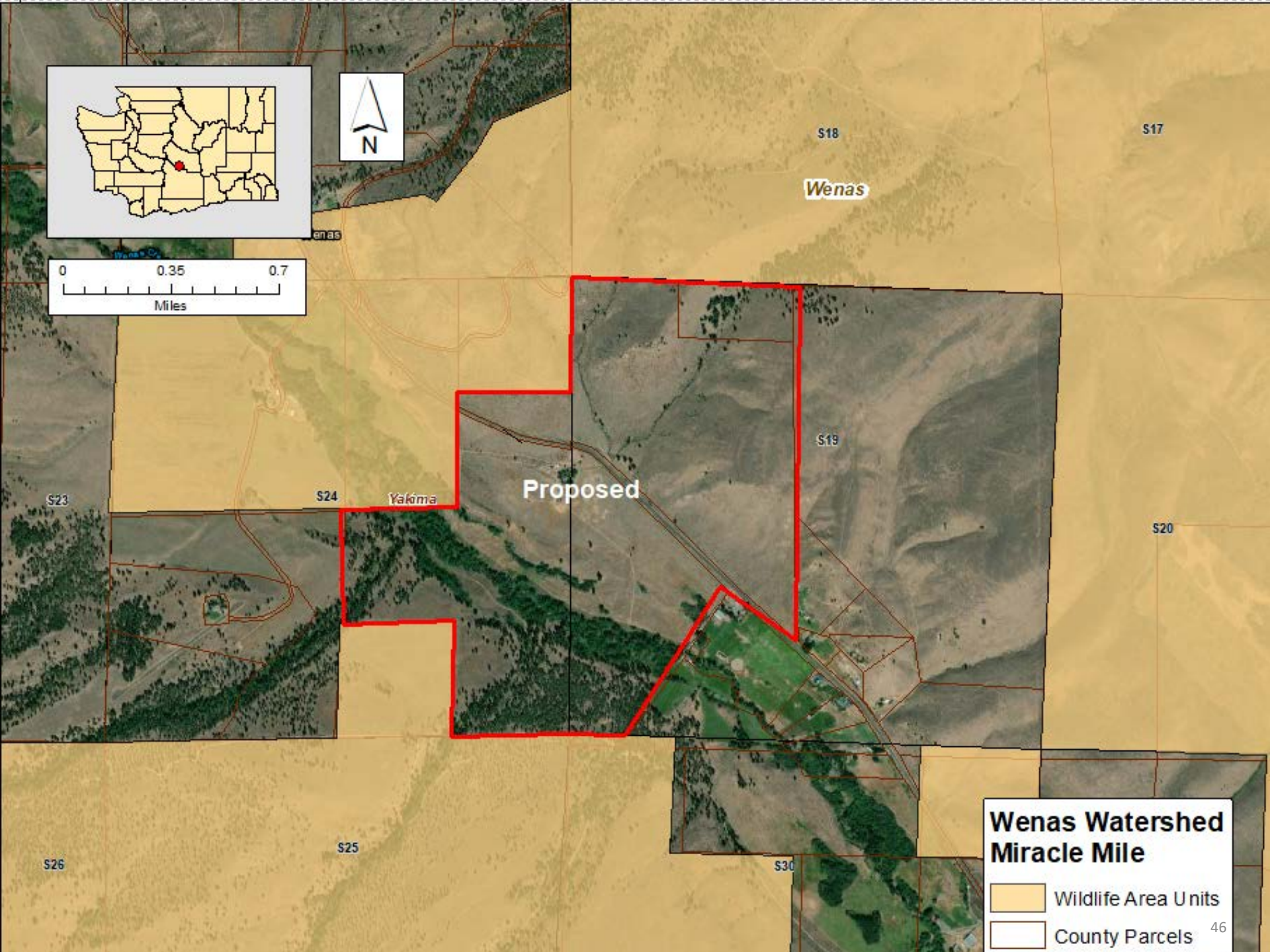
-  Wildlife Area Units
-  City Boundaries
-  Interstate
-  State Route

Wenas Watershed – Miracle Mile Yakima County



440.17 acres, fee title

- Mixed shrubsteppe
- Riparian
- Coniferous forest habitat
- Significant bird species
- Mule deer
- Recreational bird watching
- Hunting
- Hiking
- Fishing
- Wildlife viewing





Wenas Watershed Miracle Mile

-  Wildlife Area Units
-  County Parcels

PUBLIC REVIEW Comments

Public Review – Posted for
comments 1/01/2022 – 11/21/2022

- 50 comments/letters received
- 49 comments positive
- 1 comment negative

Letters of Support:

- Vancouver Audubon Society
- Wild Steelhead Coalition
- Clark – Skamania Flyfishers
- North Washington Audubon
- Black Hills Audubon
- Audubon of Washington
- Conservation Northwest
- Washington Native Plant Society



Questions

