

Forest Management Project Approval Requests for 2023



Washington Department of
FISH and WILDLIFE

Richard Tveten
Forest Management Team Lead, Lands Division
Wildlife Program

Threshold for Commission Approval

One million board feet - About 165 log truck loads



Context for 2023 projects

- Forest Management Strategy for WDFW forests adopted in 2014
- Since then, WDFW has treated 22,870 acres
 - Same area as a football field stretching from Everett, WA to Disneyland, CA
 - 9.3% of WDFW forested acres treated but 2.3% both thinned and burned
- Major activities
 - Non-commercial thinning – 8,961 acres
 - Commercial thinning (plus pile burning) – 7,929 acres
 - Prescribed burning - 5,377 acres
 - Planting – 419 acres
 - Pile burning on new acquisitions – 184 acres

During that same time period about 13% of WDFW forests burned. Sometimes with beneficial effects but often not.

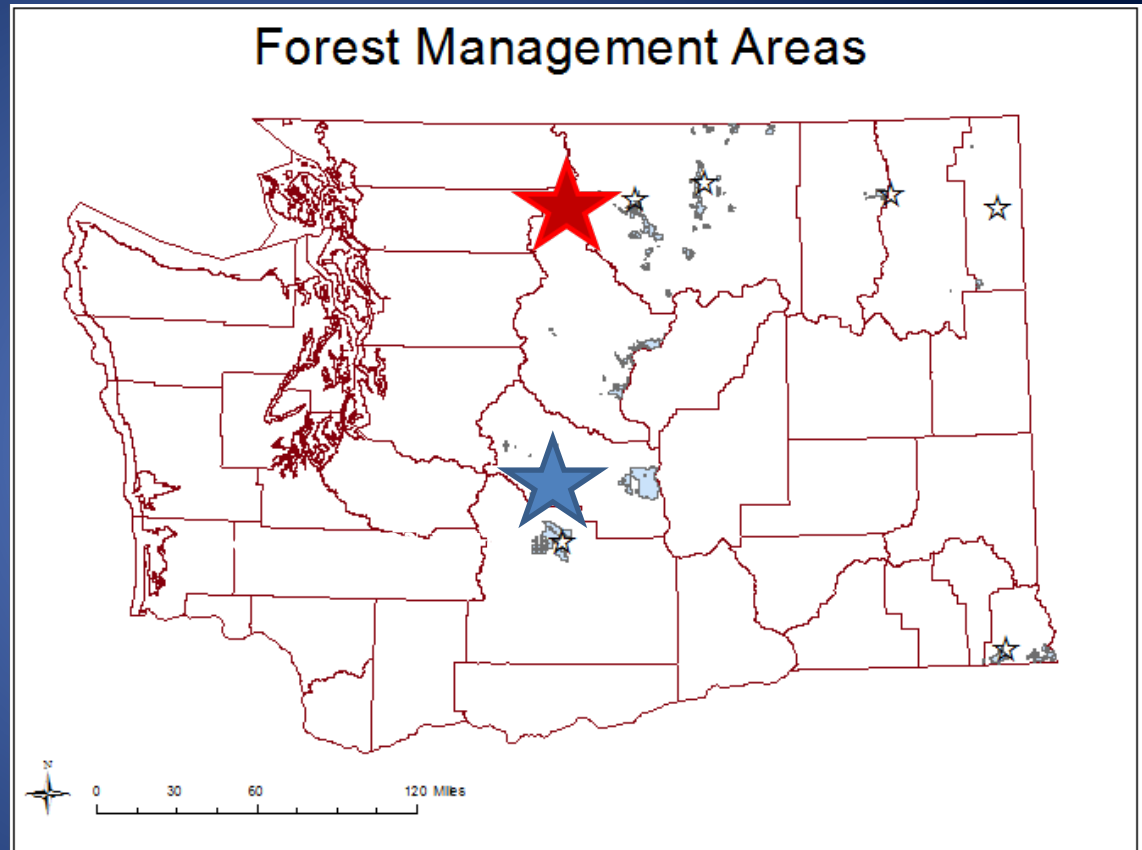
2023 Thinning Projects >1,000,000 board feet



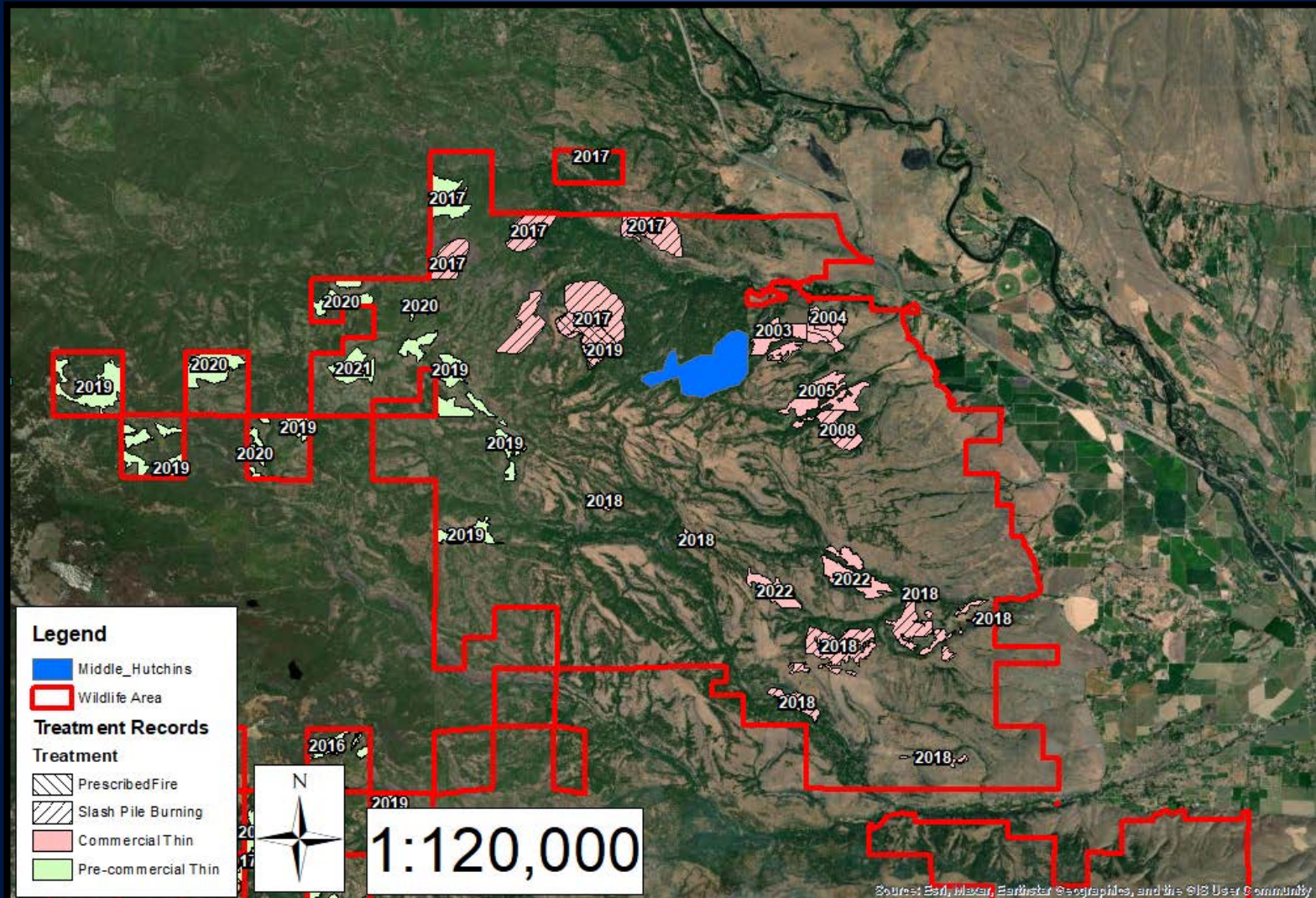
Middle Hutchins



Rendezvous/Golden Doe



Middle Hutchins (Kittitas County)



Middle Hutchins

- Up to 588 acres
- Leave about 25-35 of the best trees per acre (Favor pine)
- Remove 35-75 trees/acre.
- Average tree size will increase from 12" to 14" in diameter.
- Will remove about half of the standing fuels.
 - Two million board feet
 - About 2/3 truck load per acre
- Timing: May - October
- Slash piles will be burned
- Hope to follow up with prescribed fire

Current Conditions



Recent Nearby Project

Before

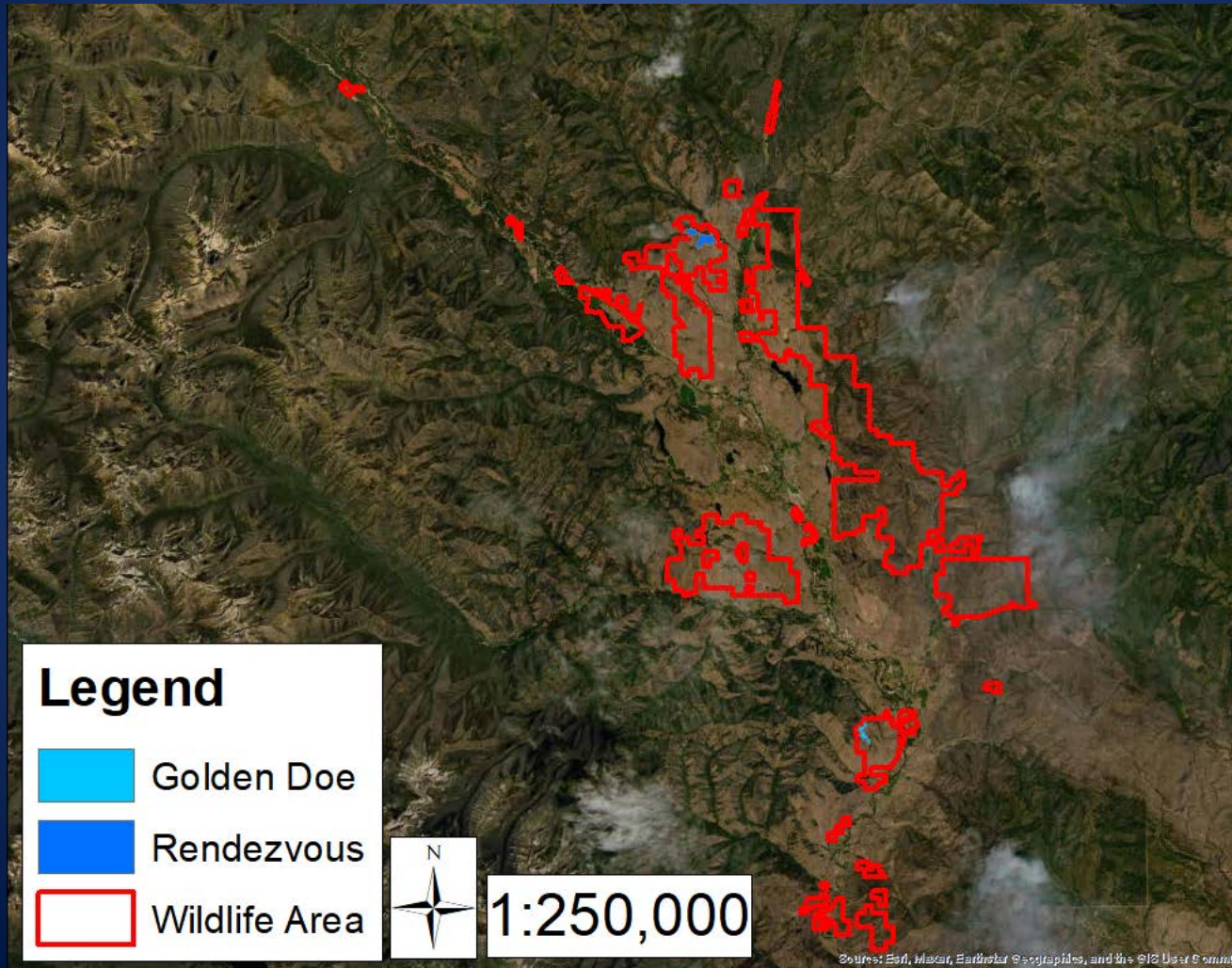


After



Rendezvous – Golden Doe

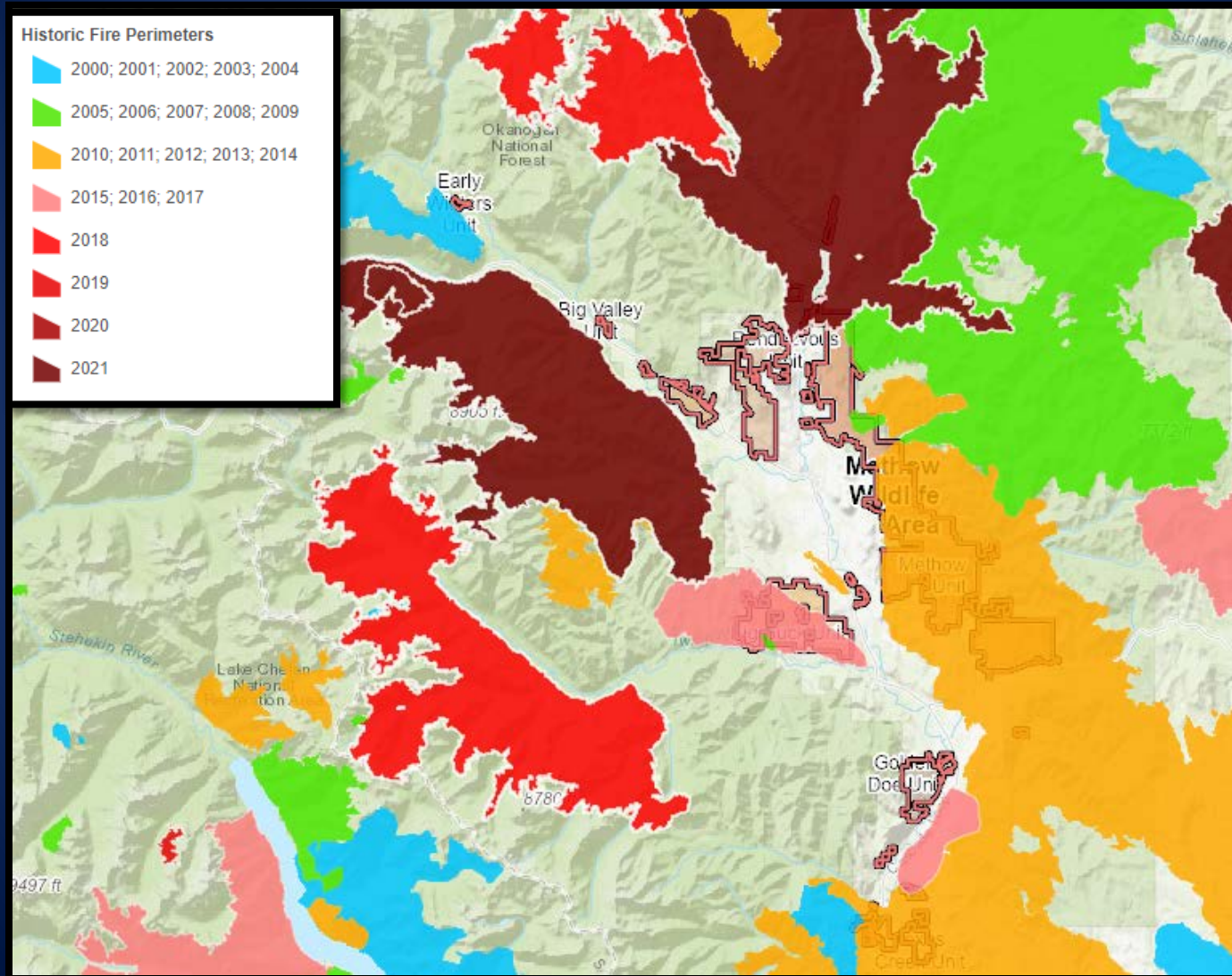
Methow Wildlife Area - Okanogan County



Rendezvous - Golden Doe

- 464 acres
- Leave 20-30 of the best trees per acre (pine and fir)
- Up to 2.5 million board feet harvested
- Remove about 9/10 of a truck load per acre
- Slash piles will be burned
- Hope to follow up with prescribed fire.

Wildfires Since 2000



Fireline for 2021 Cedar Wildfire

Better to be Proactive



Leave Trees



Recent, Nearby Project

Before



After



Fire can't hurt
this forest +
more food for
wildlife.

