

# Periodic Status Review

## Columbian White-Tailed Deer

Jeff Azerrad, Environmental Planner  
Taylor Cotten, Conservation Assessment Section Manager  
Wildlife Diversity Division



# Periodic Status Review Process and Timeline

## Listing Process Guided by WAC 220-610-110

- Periodic review of status every 5 years – last Columbian White-tailed Deer PSR 2016
- February 2020 - solicit data and information from the public
- August 2022 – 90-day public comment period on draft
- November 2022 – SEPA public comment period
- Listing “...solely on the basis of the biological status of the species being considered, based on the preponderance of scientific data available.”
- Listed species: currently more than 75% are classified as Endangered (36 of 47 listed species)

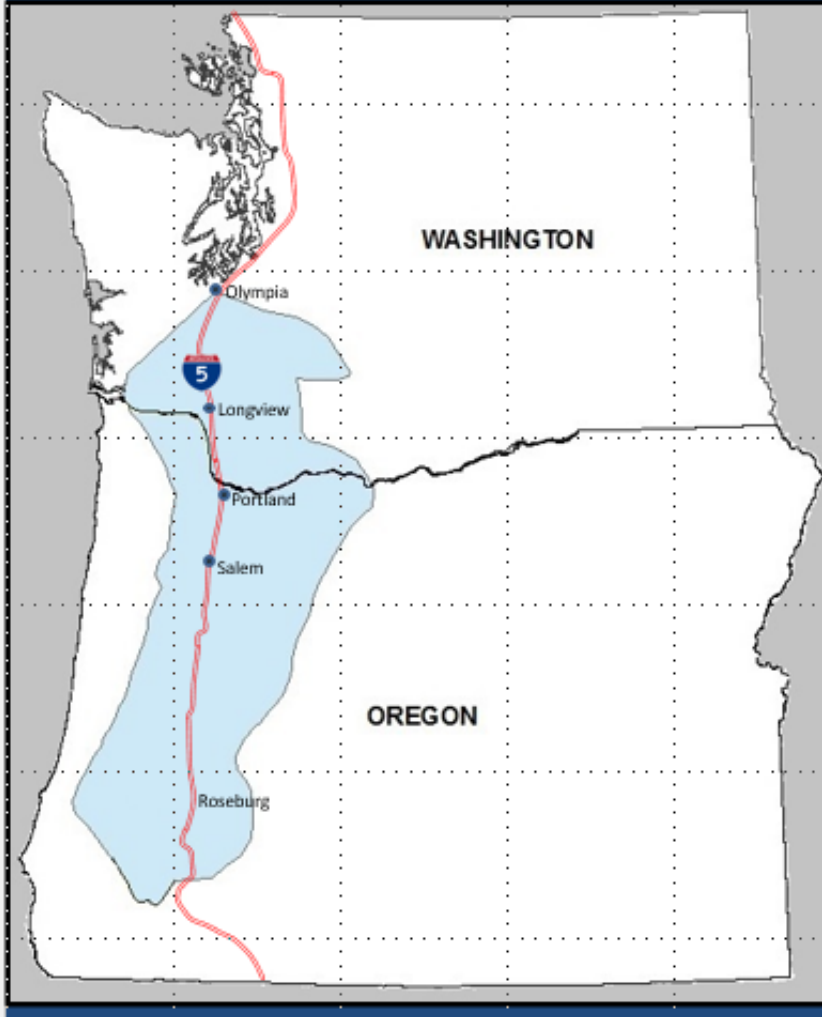


# Natural History

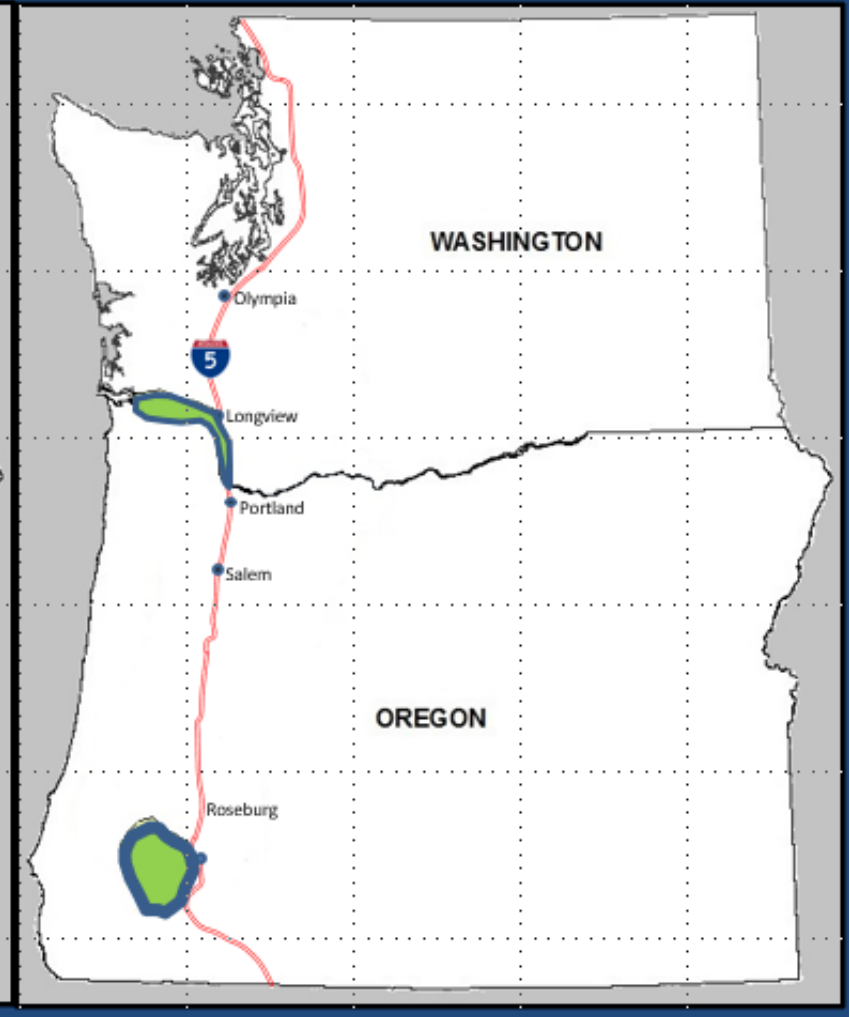
- Subspecies of white-tailed deer
- Pacific Northwest endemic species
- Appearance almost indistinguishable from Northwest White-tailed Deer



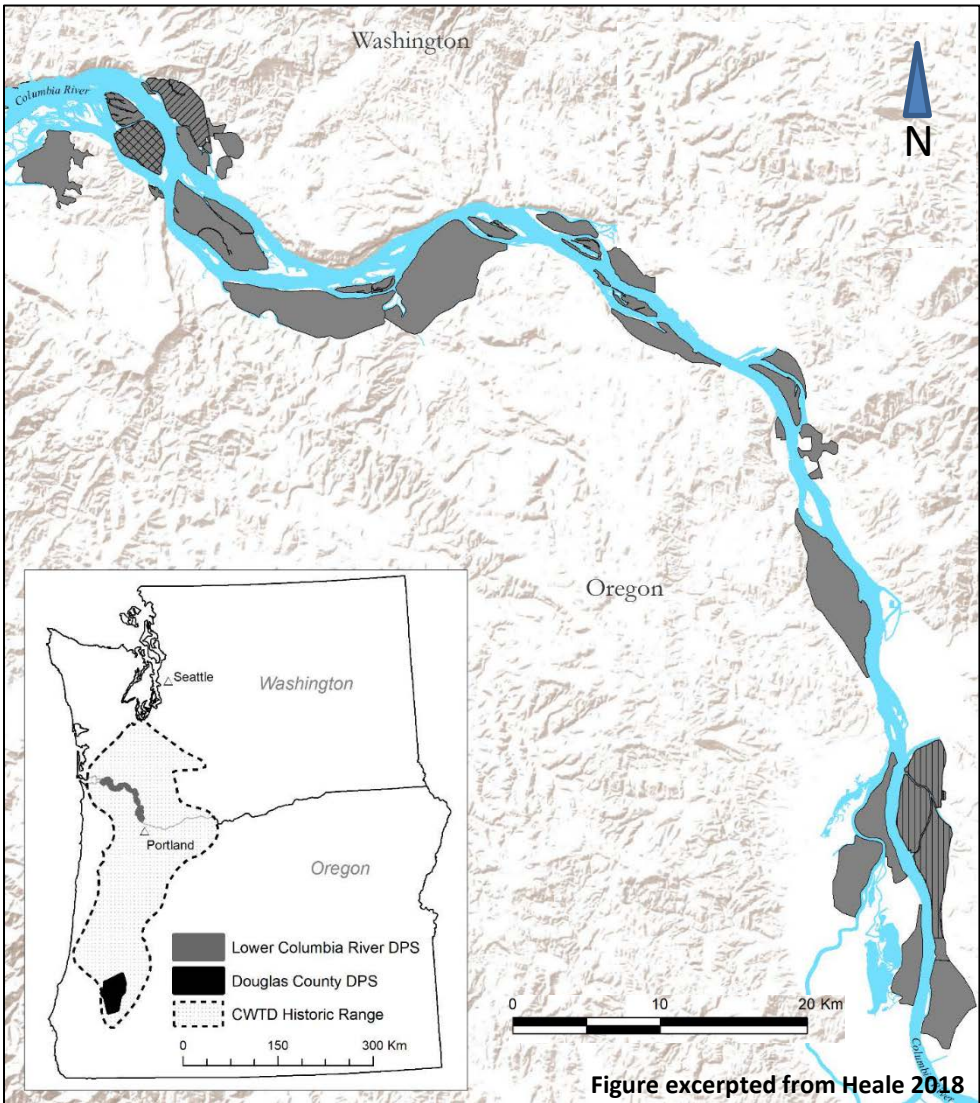
# Historic Distribution



# Current Distribution



# Columbia River CWTD Population



# Legal Status

- Federally Threatened
- State Endangered in Washington



Photo courtesy of USFWS



# Historical CWTD Habitat



Photo courtesy of [southsoundprairies.org](http://southsoundprairies.org)



# Current CWTD Habitat

- Open understory
- Prefer deciduous forest
- Riparian
- Avoid conifer forest

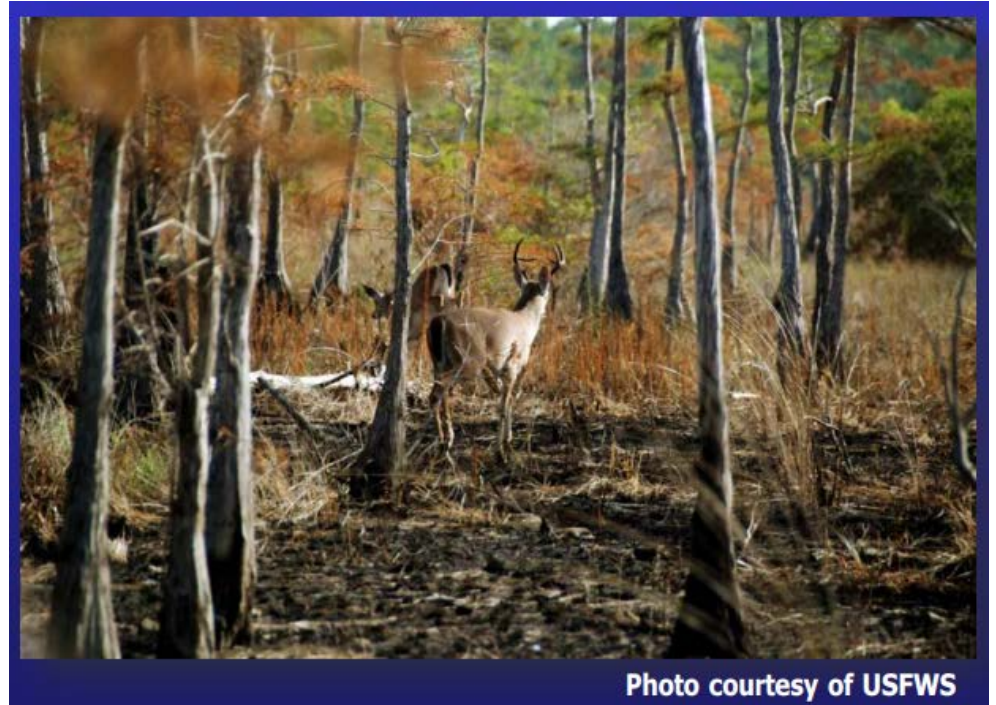


Photo courtesy of USFWS





# Historical Population Status

- Historically abundant
- Near extirpated by 1900
- ~720 in 1984
- ~550 to 600 between 2000 and 2010



# Management Activities: Habitat Protection



Courtesy USFWS – Pacific Region



# Management Activities: Habitat Restoration



Courtesy USFWS – Pacific Region



# Management Activities: Predator Control



Courtesy BLM



# Management Activities: Translocations

Year	# Translocated	Destination
1985	21	
1986	19	Tenasillahe Island
1987	19	Tenasillahe Island
1988	21	Tenasillahe Island
1999	30	Crim's Island
2000	30	Crim's Island
2003	16	Lord Island
2003	12	Fisher Island
2004	11	Fisher Island
2004	8	Lord Island
2006	10	Fisher Island
2006	9	Lord Island
2006	5	Crim's Island
2006	5	Crim's Island
2009	20	JBH Mainland
2010	8	JBH Mainland
2010	15	Cottonwood Island
2013	12	Cottonwood Island
2013	37	Ridgefield
2014	21	Ridgefield
2015	30	Ridgefield
2020	15	Ridgefield
2021	12	Columbia Stock Ranch
2022	10	Columbia Stock Ranch



# Population Viability Analysis (PVA)

- Current and projected demographics
- Carrying capacity
- Extinction risk



The image shows the cover of a workshop report. At the top left is the IUCN SSC Conservation Planning Specialist Group logo, which includes the text "IUCN", "SSC", "CONSERVATION PLANNING SPECIALIST GROUP", and "Changing the Future for Wildlife". To the right of this logo, the text reads "Columbian White-Tailed Deer (*Odocoileus virginianus leucurus*) Population and Habitat Viability Assessment". Below this text, the words "WORKSHOP REPORT" are written in large, bold, black capital letters. The central part of the cover is a photograph of two young deer standing in a field of tall grass. At the bottom of the cover, there is a row of four logos: the U.S. Fish & Wildlife Service logo, a circular logo with a fish and a bird, the Oregon Fish & Wildlife logo, and the Washington Department of Fish and Wildlife logo.



# Findings of PVA Relevant to Status Review

- Carrying capacity around Ridgefield NWR
- Low extinction risk



# Endangered

Any wildlife species native to the state of Washington that is seriously threatened with extinction throughout all or a significant portion of its range within the state (WAC 220-610-110 [2.4]).



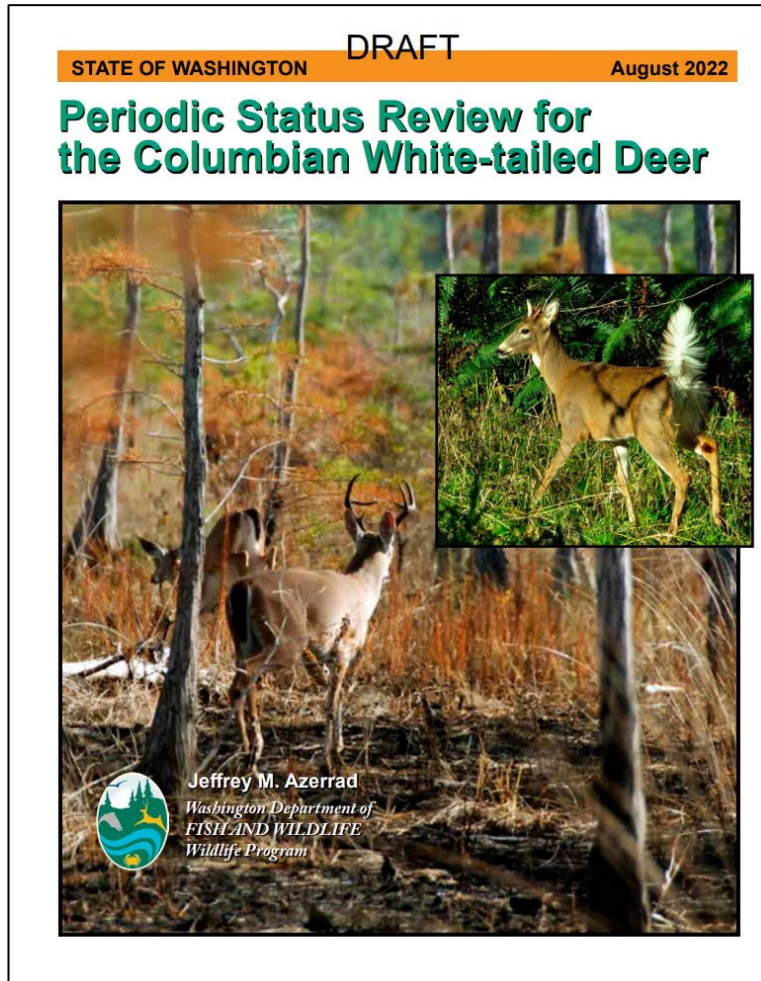


# Threatened

Any wildlife species native to the state of Washington that is likely to become an endangered species within the foreseeable future throughout a significant portion of its range within the state without cooperative management or removal of threats (WAC 220-610-110 [2.5]).



# Recommendation



**Reclassify  
Columbian White-tailed Deer to  
Threatened**



# Public Comments

- 6 reviewers provided public comments
  - 4 reviewers explicitly stated their support of our recommendation.
  - 1 reviewer provided a personal anecdote regarding their positive experience with the species on their property.
  - 1 reviewer provided a comment to improve format of a few of the tables.





Bonneville  
POWER ADMINISTRATION



# Questions?

