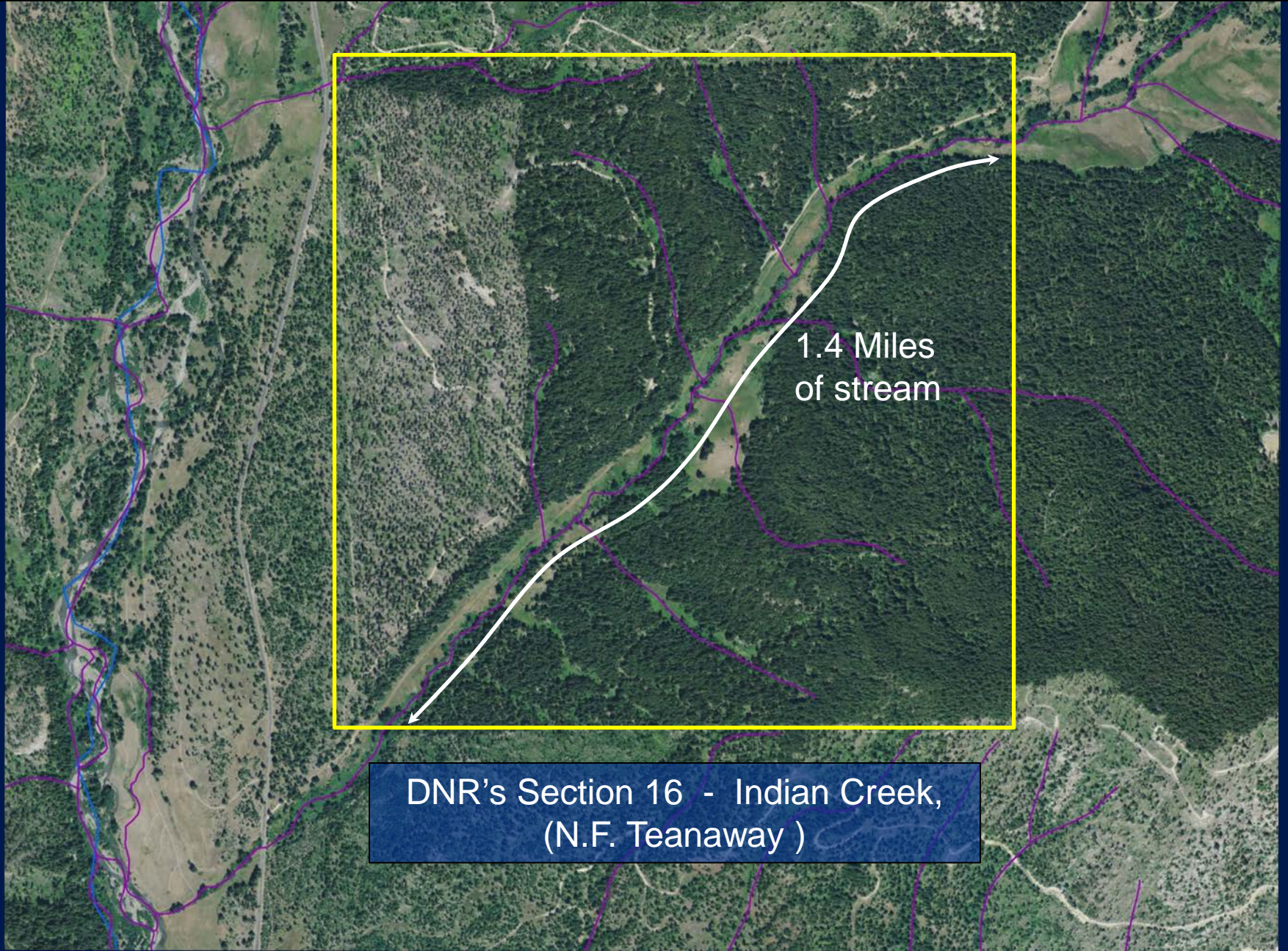


The Yakima Beaver Project



Indian Creek – NF Teanaway tributary



1.4 Miles
of stream

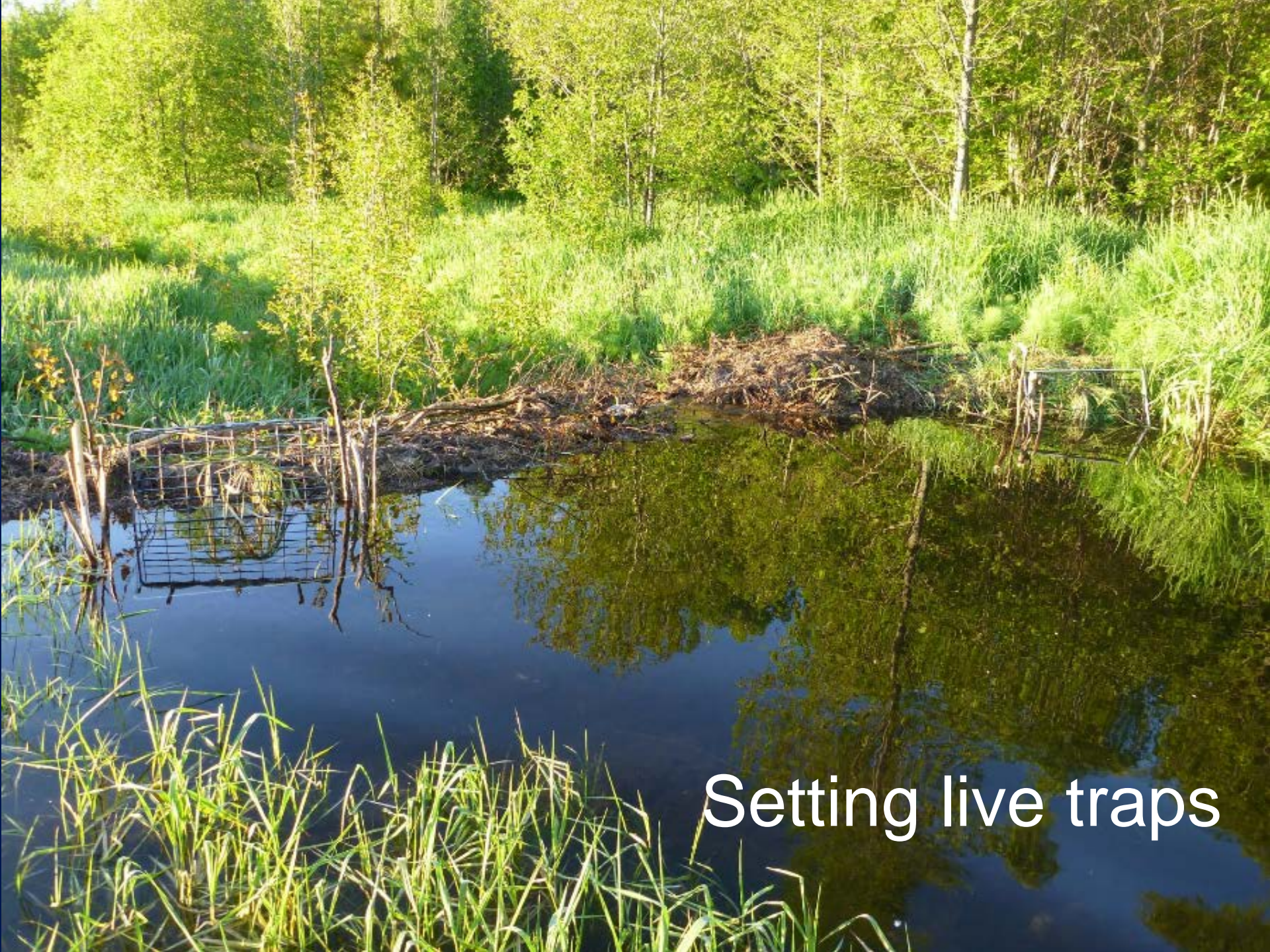
DNR's Section 16 - Indian Creek,
(N.F. Teanaway)



How it all Starts....



How it all Starts....it's flooding my garden



Setting live traps



Two caught.

Beaver Holding Facility



Arriving
Beavers

Temporary holding facility

Meet the Beavers:

Chew Barka

R2 Tree Chew

Princess lay-down-a-tree

Bark Vader

Luke Streamwalker

Beaver the Hut

Barkley



A trip to their new pond.



The new homestead



Temporary Lodge and small pond

Results 2 months



**Bear Creek Release Site
NF Teanaway Tributary**

A photograph of a stream in a forest. The stream is heavily obstructed by a large pile of fallen logs and branches, creating a log jam. The water is dark and turbulent as it flows through the debris. The surrounding forest is lush with green vegetation, including ferns and various trees. The scene is captured from a slightly elevated perspective, looking down the length of the stream.

Results 10 months

**Hurley Creek Release Site
Swauk Tributary**

Results 16 months



~5 Feet

Not a high flow
passage barrier for fish

Jack Creek Release Site

Cool

Clean

Complex

Connected

**Beaver
Biologist**

Results 2 years



**NF Manastash
Creek Release site**



Effectiveness Monitoring - Trailcams & PIT tags



How fast do beavers work?

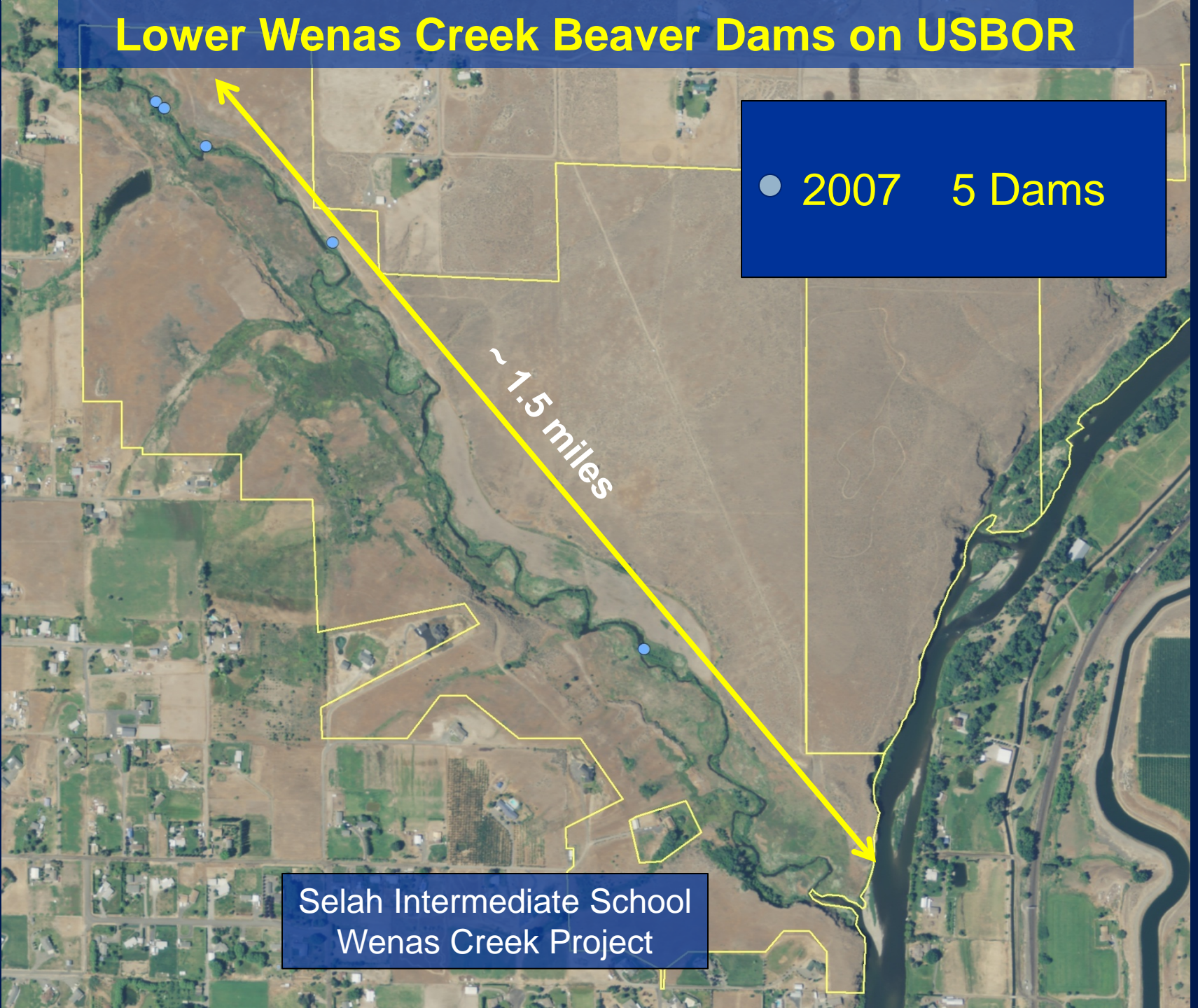


Lower Wenas Creek Beaver Dams on USBOR

● 2007 5 Dams

~ 1.5 miles

Selah Intermediate School
Wenas Creek Project

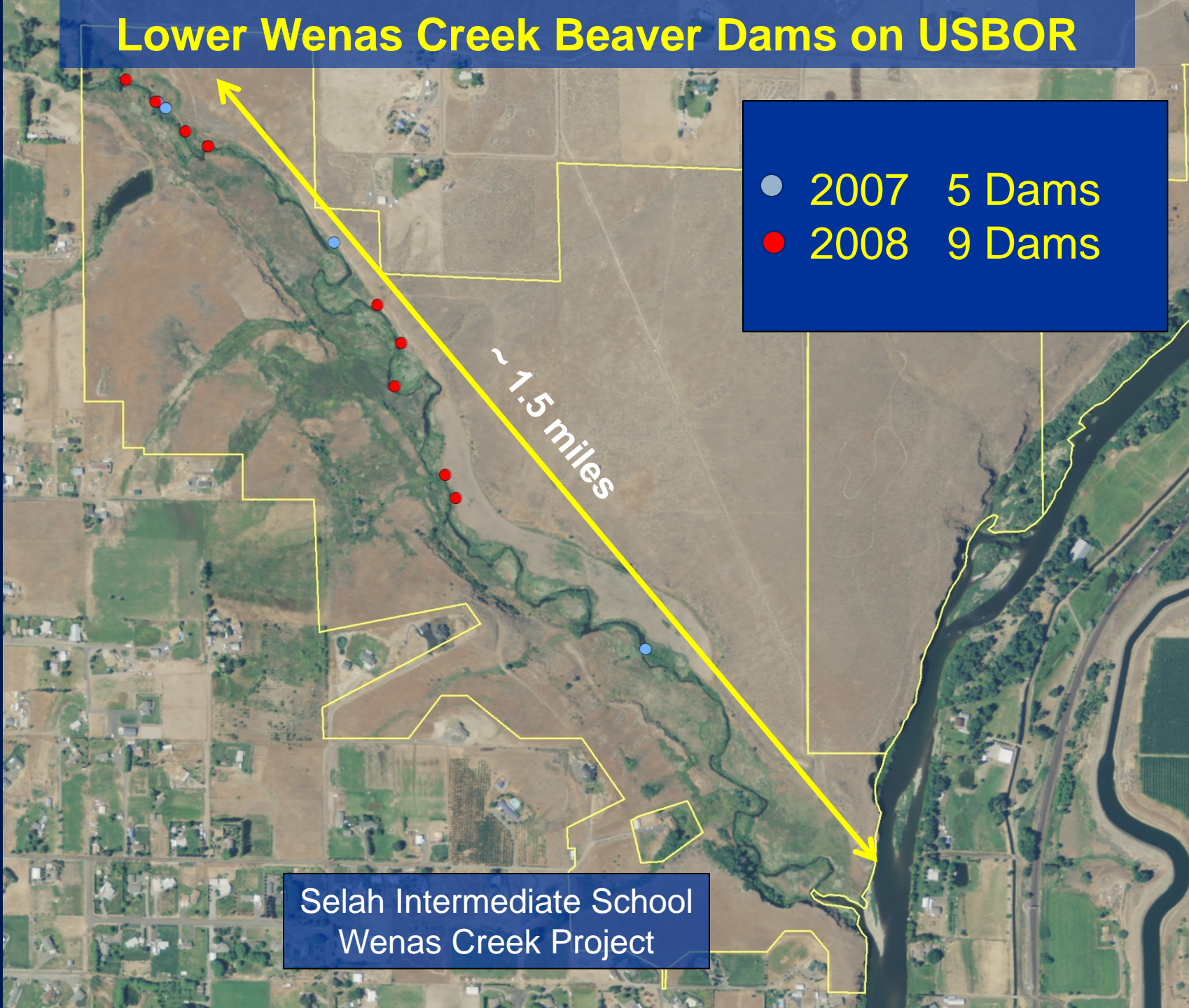


Lower Wenas Creek Beaver Dams on USBOR

- 2007 5 Dams
- 2008 9 Dams

~ 1.5 miles

Selah Intermediate School
Wenas Creek Project

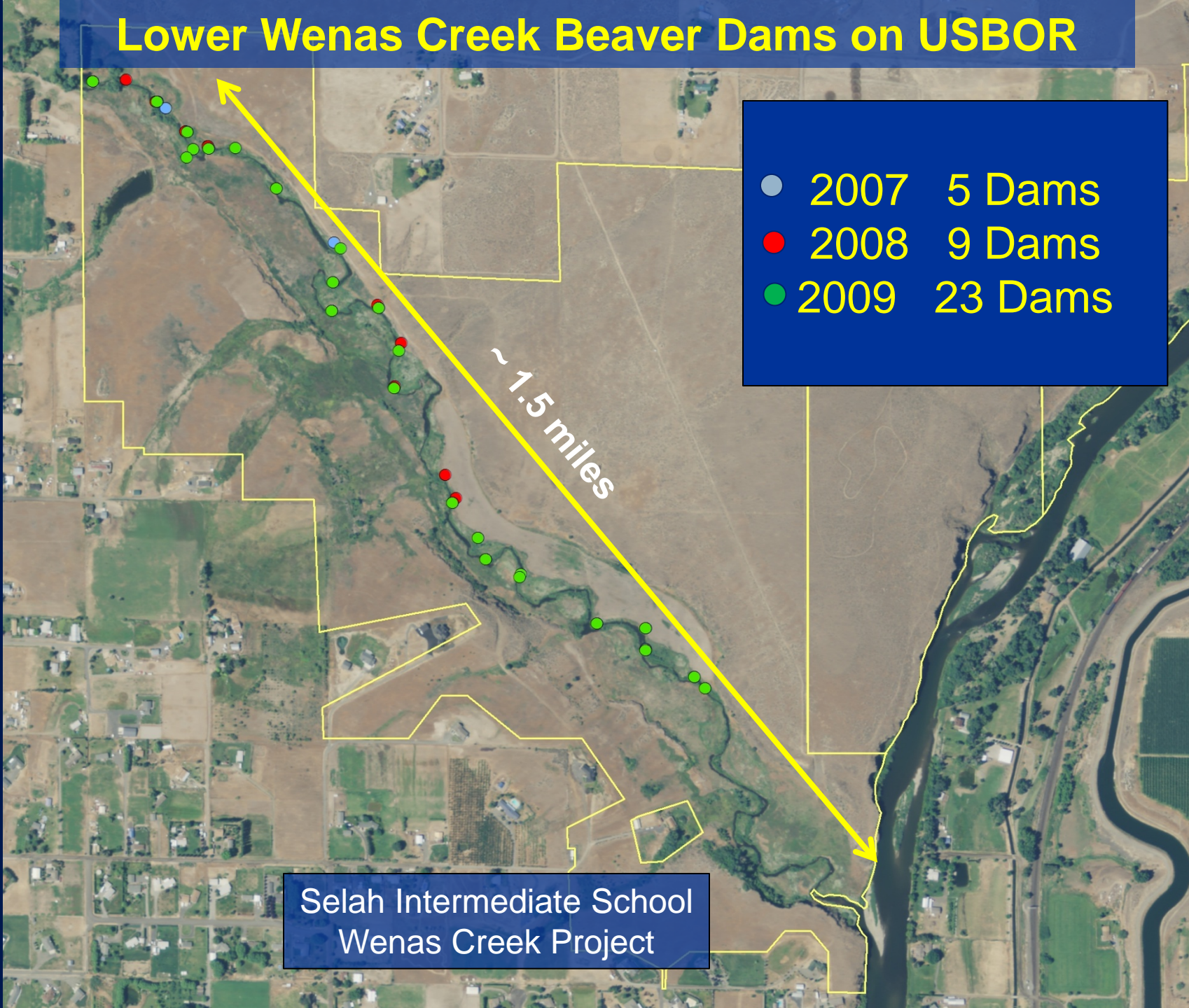


Lower Wenas Creek Beaver Dams on USBOR

- 2007 5 Dams
- 2008 9 Dams
- 2009 23 Dams

~ 1.5 miles

Selah Intermediate School
Wenas Creek Project

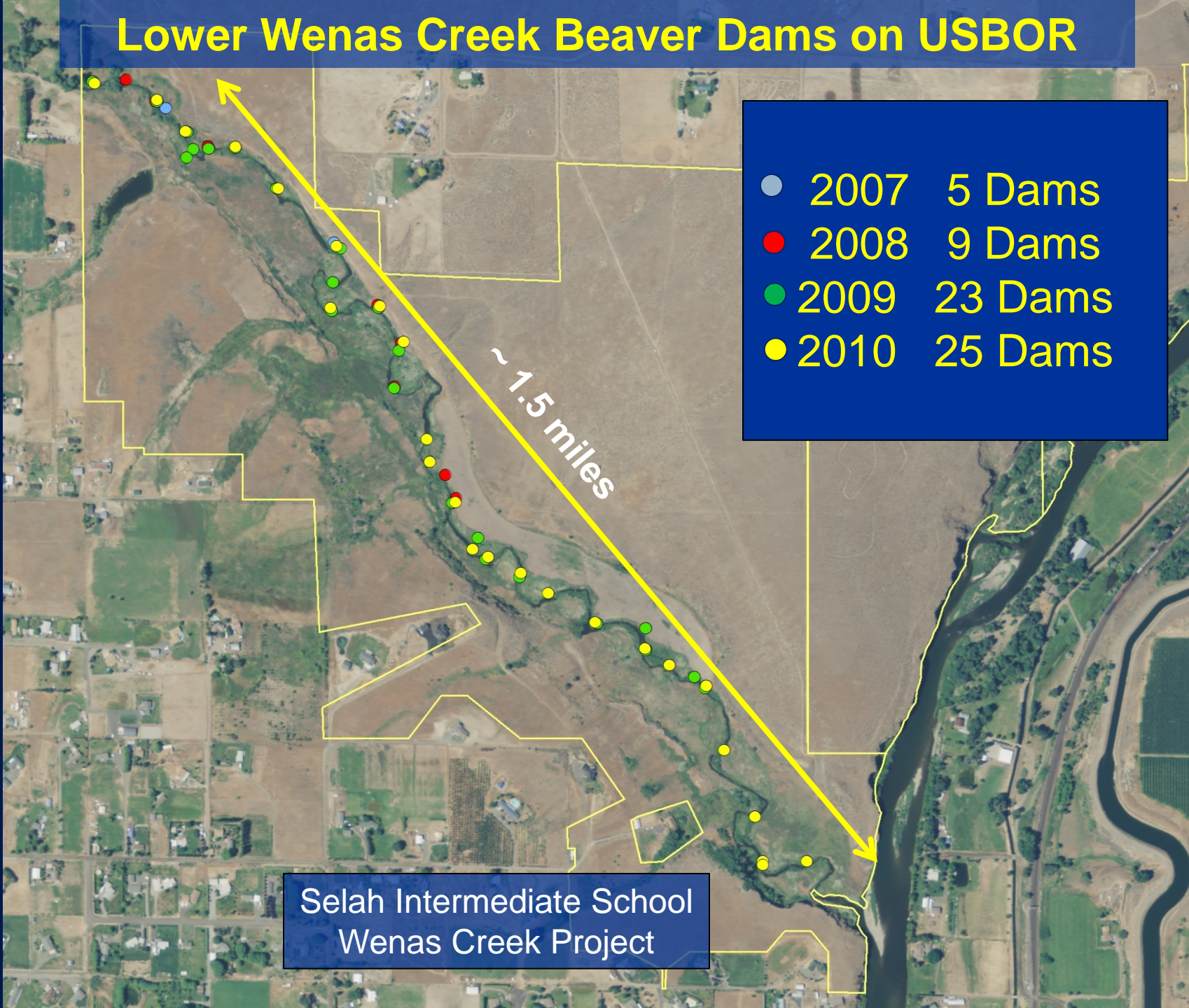


Lower Wenas Creek Beaver Dams on USBOR

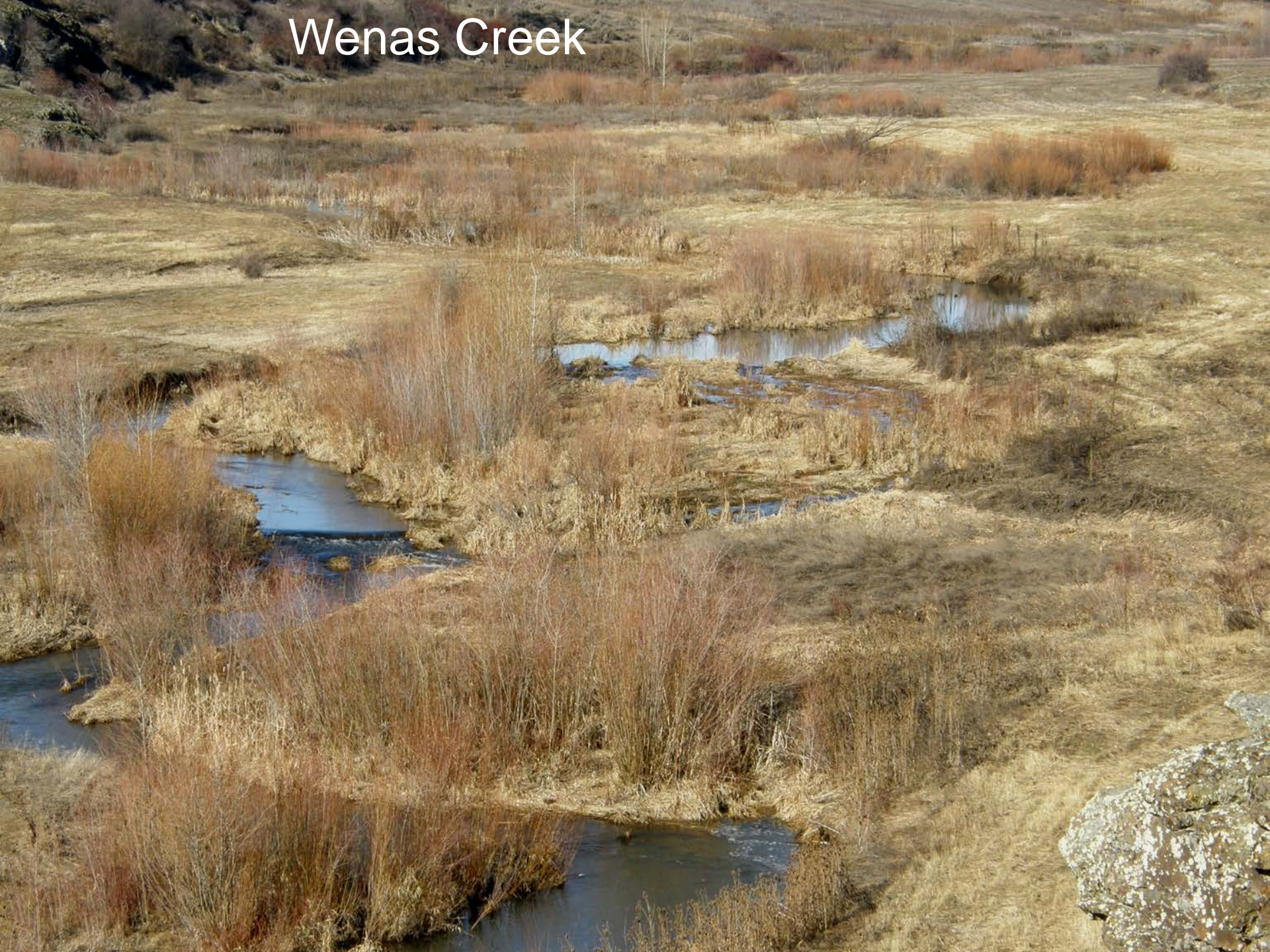
● 2007	5 Dams
● 2008	9 Dams
● 2009	23 Dams
● 2010	25 Dams

~ 1.5 miles

Selah Intermediate School
Wenas Creek Project



Wenas Creek



Collaboration is KEY



Grant sponsor, permits, staff & vehicle match



Project management, liaison with volunteers



Beaver Holding Facility (tanks, irrigation)



Matching grant and Public land for reintroductions



Student Interns

Beavers are gentle creatures



Questions?

