

# 4. LAND TRANSACTIONS

JANUARY 27<sup>th</sup>, 2023

## TABLE OF CONTENTS

Summary Sheet.....	i
Item 1: Proposed Transfer of 109 (+/-) acres in Mason County Union River Unit, South Puget Sound Wildlife Area, Region 6	
Regional Map .....	1A
Location Map .....	1B
Item 2: Proposed Acquisition of 339 (+/-) acres in Okanogan County McLoughlin Falls Unit, Sinlahekin Wildlife Area, Region 2	
Regional Map .....	2A
Location Map .....	2B



## Fish and Wildlife Commission Presentation Summary Sheet

---

**Meeting date:**

1/27/2023

**Agenda item:**

4. Land Transactions

**Presenter(s):**

Thom Woodruff, Property Acquisition Supervisor

---

**Background summary:**

**Item 1:**

**Proposed Transfer of 109 (+/-) acres in Mason County  
Union River Unit, South Puget Sound Wildlife Area, Region 6**

This proposed transfer will acquire 109(+/-) acres within the Union River Unit of the South Puget Sound Wildlife Area in Mason County, Region 6. This project will provide protection and restoration opportunities of estuarine habitat for wildlife and marine fish resources, including five species of salmonids and two species of forage fish, surf smelt, and Pacific herring. WDFW's acquisition of this land will also ensure the protection of ongoing recreational, educational and public access opportunities that are currently afforded by this property.

Approved through Lands 20/20 in 2020, the 109(+/-)-acre property will be acquired through a no-fee transfer from the North Mason School District #403.

**Item 2:**

**Proposed Acquisition of 339 (+/-) acres in Okanogan County  
McLoughlin Falls Unit, Sinlahekin Wildlife Area, Region 2**

This proposed acquisition will protect significant shrub steppe and riparian habitats for species such as mule deer, shrub steppe obligates and fish species such as summer/fall chinook, steelhead and pacific lamprey. The project property maintains a vital habitat connectivity between the Cascade and Kettle River Mountain ranges allowing many species to move through the area. The property will also allow for several recreational opportunities, including hunting, fishing and wildlife viewing.

Approved through Lands 20/20 in 2019 the property will be acquired with a Washington Wildlife Recreation Program (WWRP) Critical Habitat grant through the Recreation and Conservation Office (RCO). The appraised value for the property is \$1,356,000.

---

**Staff Recommendation:**

Staff recommend approval of these land transactions.

---

**Policy issue(s) and expected outcome:**

Protecting critical fish and wildlife habitat and providing recreational opportunities.

---

**Fiscal impacts of agency implementation:**

Operation and maintenance costs.

---

**Action requested and/or proposed next steps:**

Approval of land transactions as presented.

---

**Draft motion language:**

Motion: I move to approve the land transactions as presented by staff.

Is there a "second"?

If so, then motion maker discusses basis for motion; other Commissioners discuss views on motion; amendments, if any, proposed and addressed.

---

**Post decision communications plan:**

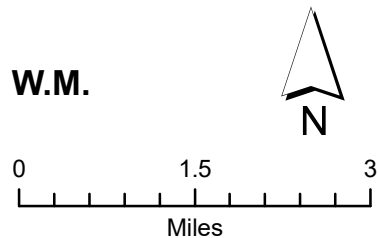
WDFW will distribute a press release informing the public of this action.

# ITEM 1: UNION RIVER UNIT, SOUTH PUGET SOUND WLA

COUNTY: MASON

LEGAL: SECTIONS 31 and 32, TOWNSHIP 23N, RANGE 01W, W.M.

ACRES:109 (+/-)

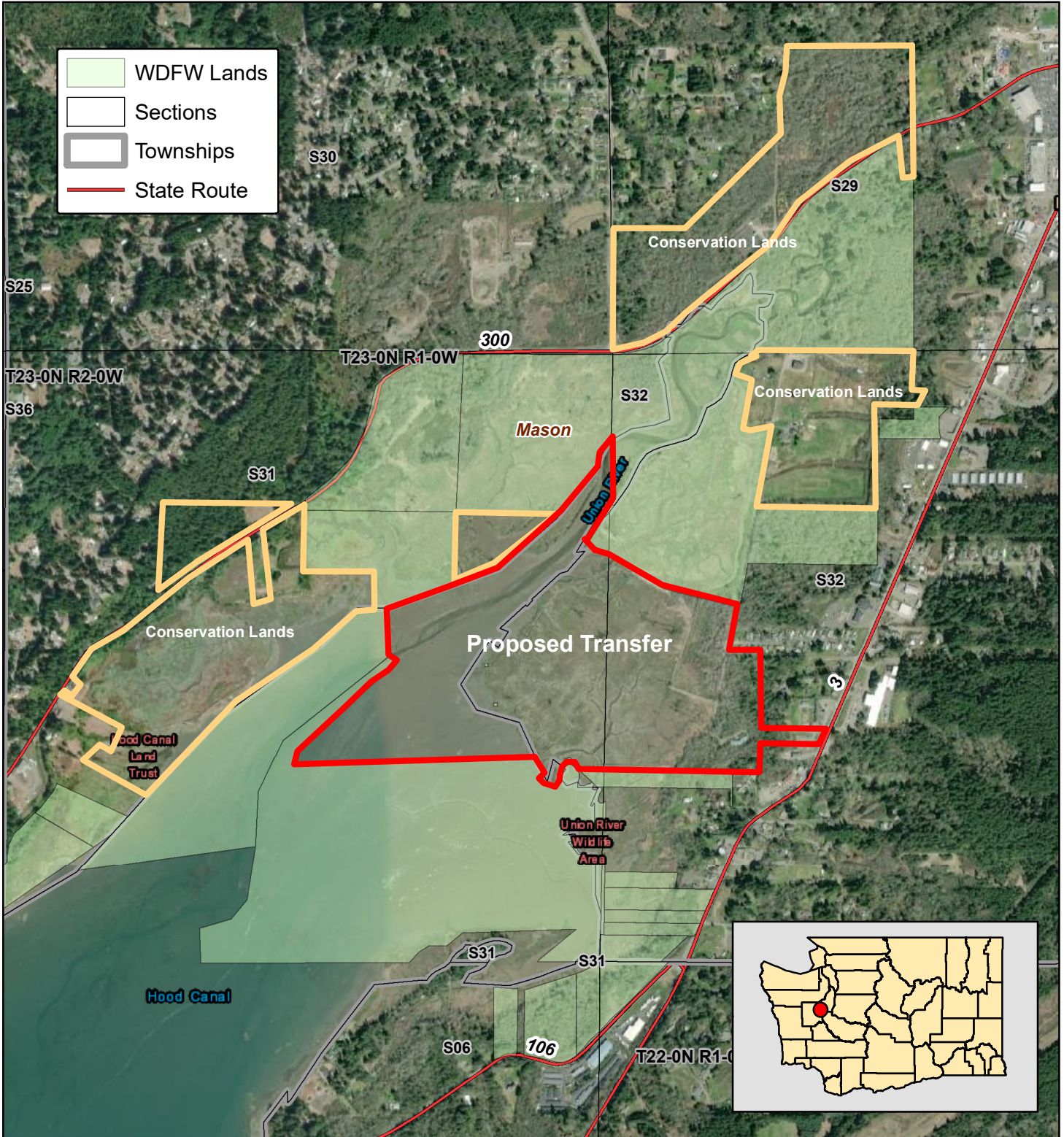
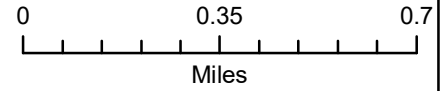


# ITEM 1: UNION RIVER UNIT, SOUTH PUGET SOUND WLA

COUNTY: MASON

LEGAL: SECTIONS 31 and 32, TOWNSHIP 23N, RANGE 01W, W.M.

ACRES:109 (+/-)

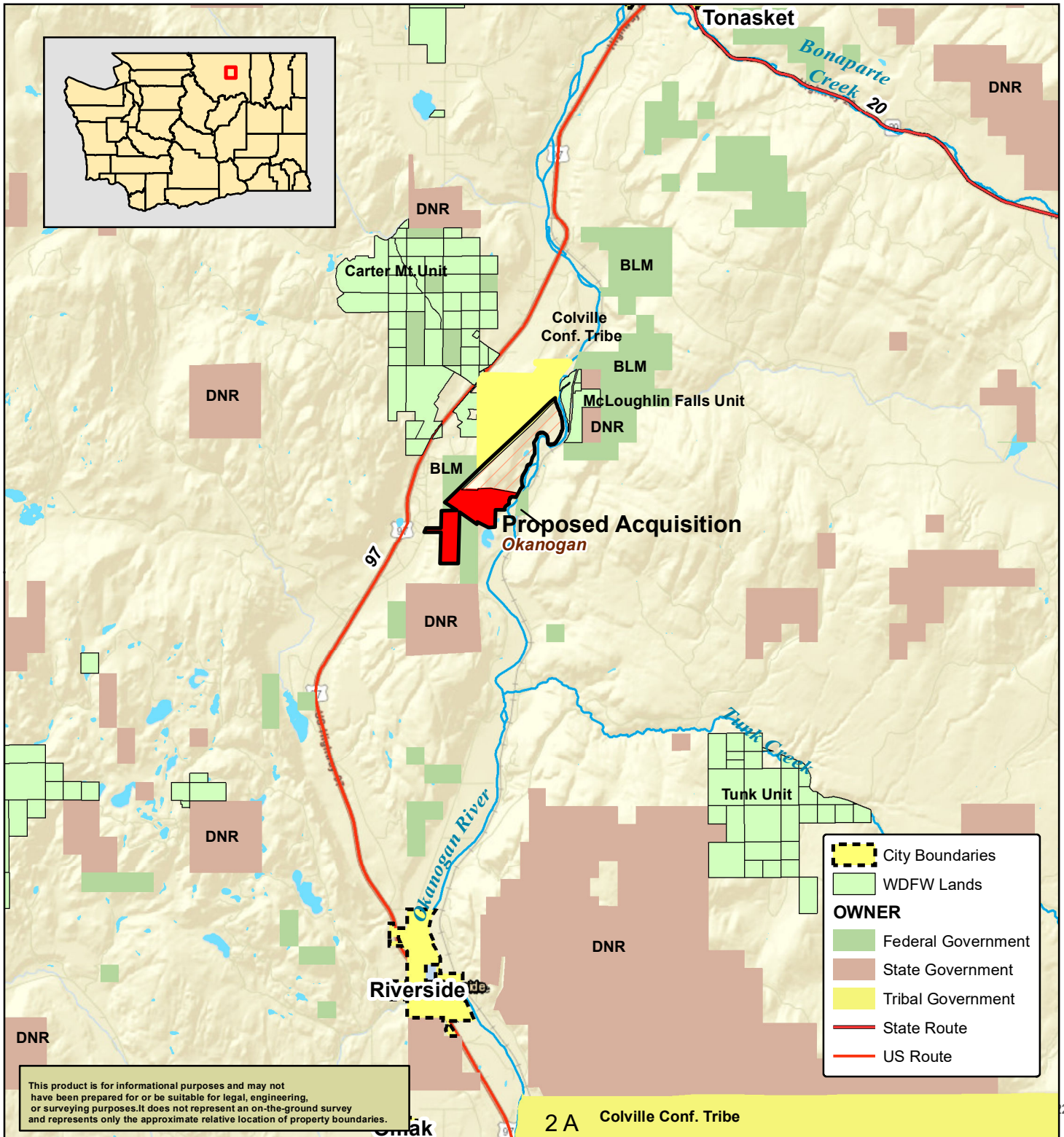
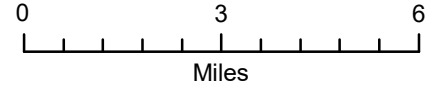


# ITEM 2: MCLOUGHLIN FALLS UNIT, SINLAHEKIN WLA

COUNTY: OKANOGAN

LEGAL: SEVERAL SECTIONS, TOWNSHIP 36N, RANGES 26 & 27E, W.M.

ACRES:339 (+/-)



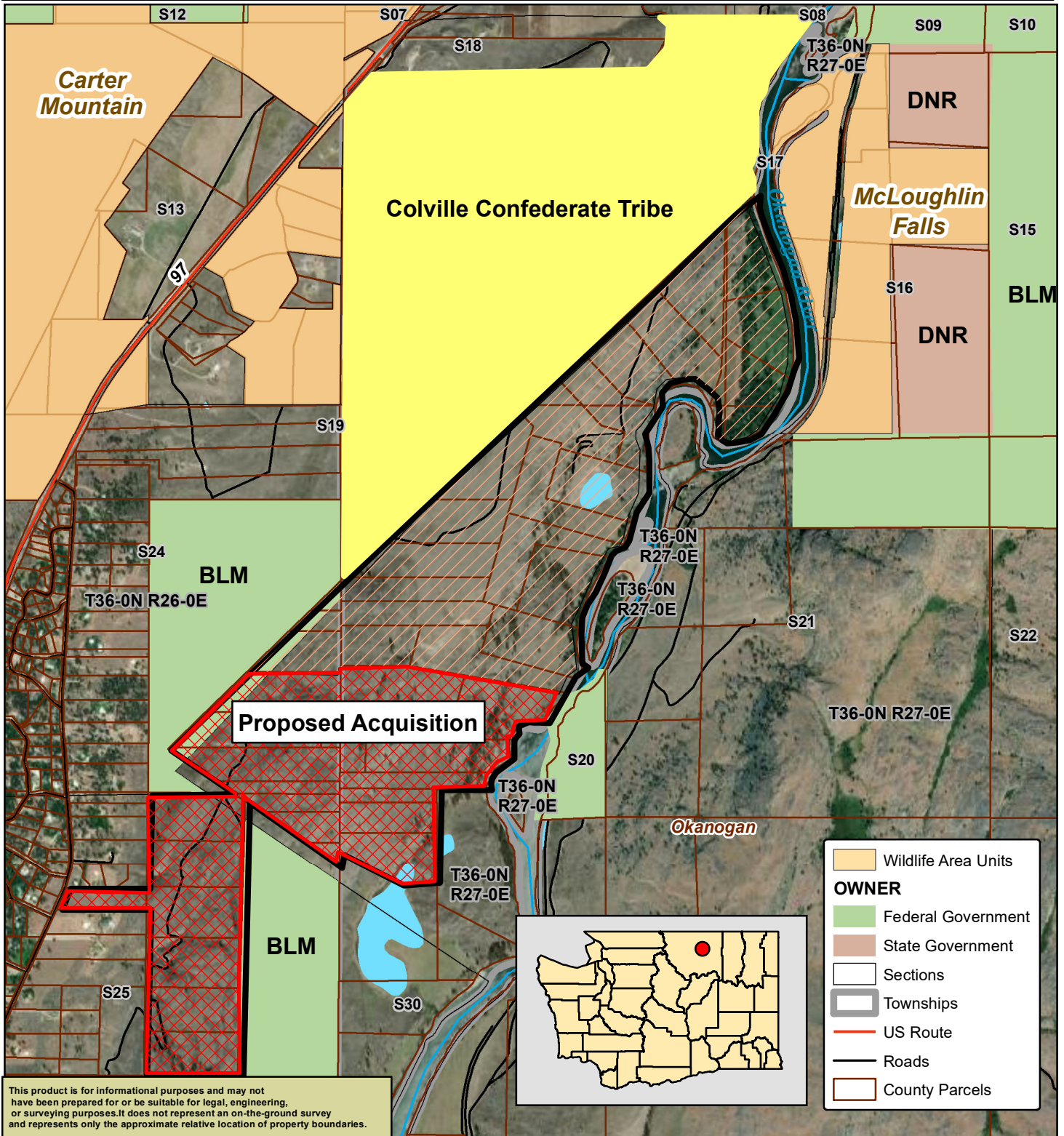
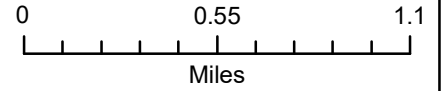
This product is for informational purposes and may not have been prepared for or be suitable for legal, engineering, or surveying purposes. It does not represent an on-the-ground survey and represents only the approximate relative location of property boundaries.

# ITEM 2: MCLOUGHLIN FALLS UNIT, SINLAHEKIN WLA

COUNTY: OKANOGAN

LEGAL: SEVERAL SECTIONS, TOWNSHIP 36N, RANGES 26 & 27E, W.M.

ACRES: 339 (+/-)



This product is for informational purposes and may not have been prepared for or be suitable for legal, engineering, or surveying purposes. It does not represent an on-the-ground survey and represents only the approximate relative location of property boundaries.

