

HABITAT PROGRAM INTRODUCTION

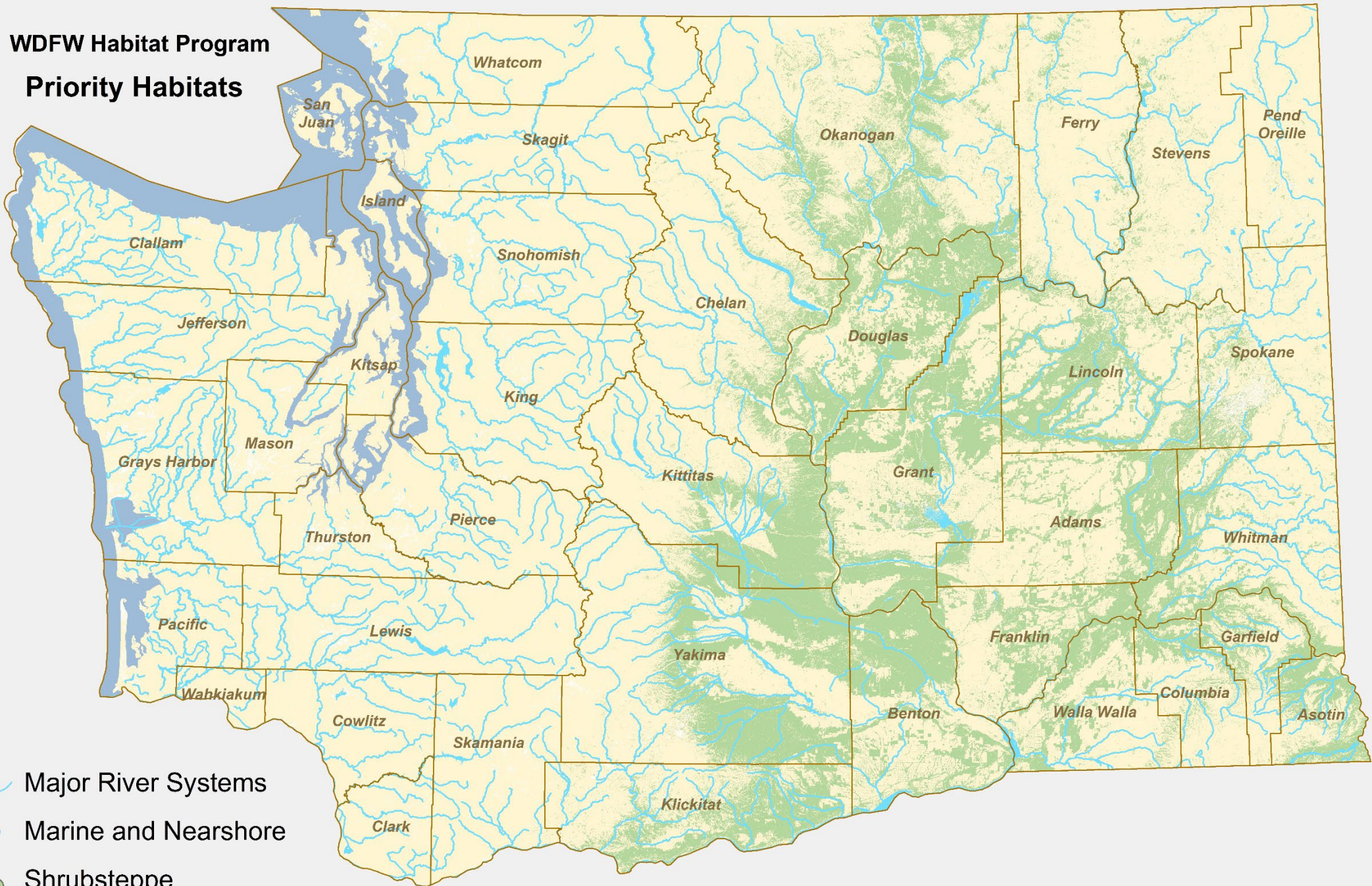
Margen Carlson, Program Director
Chuck Stambaugh-Bowey, Deputy Program Director






Habitat program influences the ways people affect habitat throughout Washington.



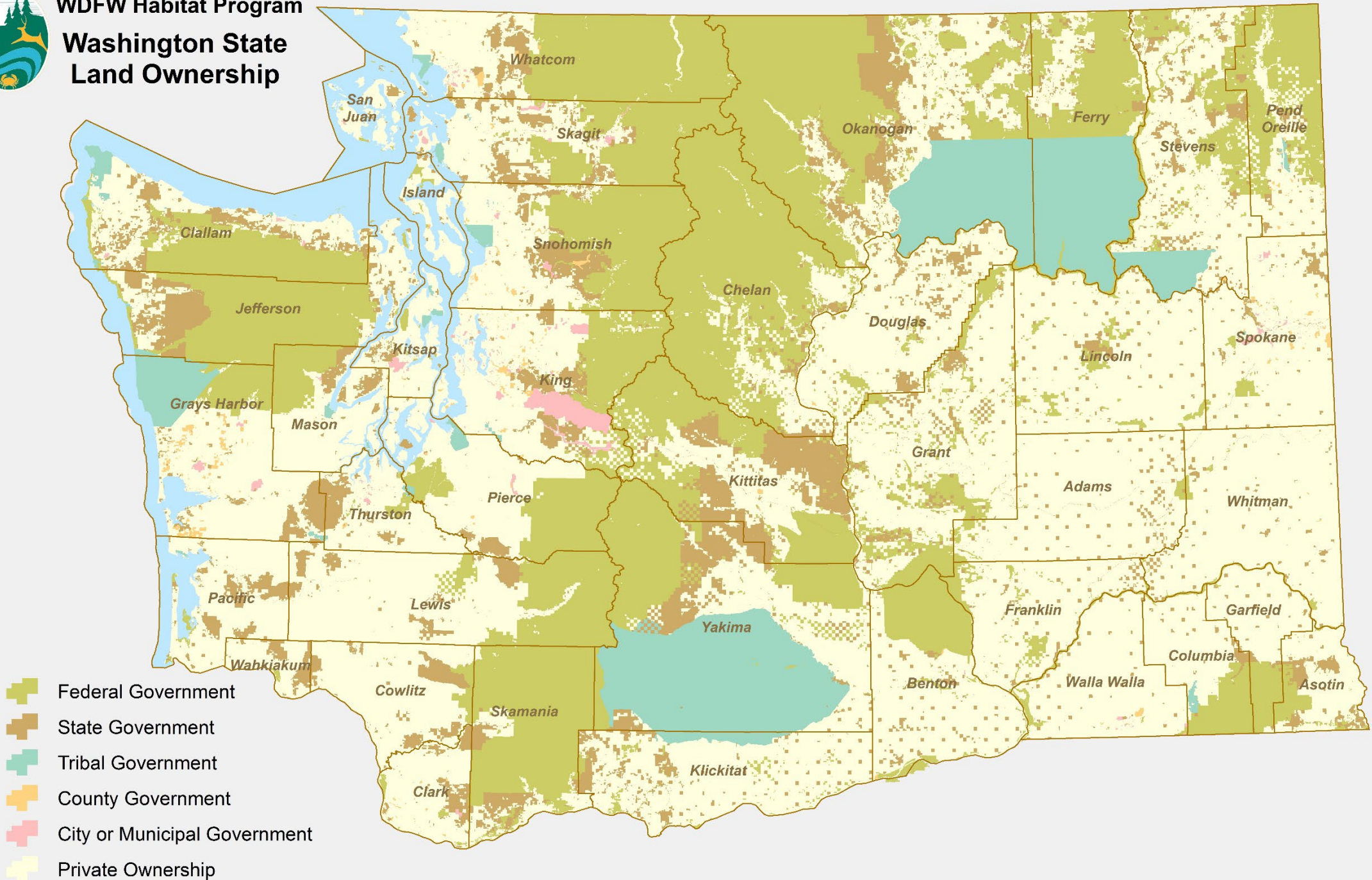
WDFW Habitat Program Priority Habitats



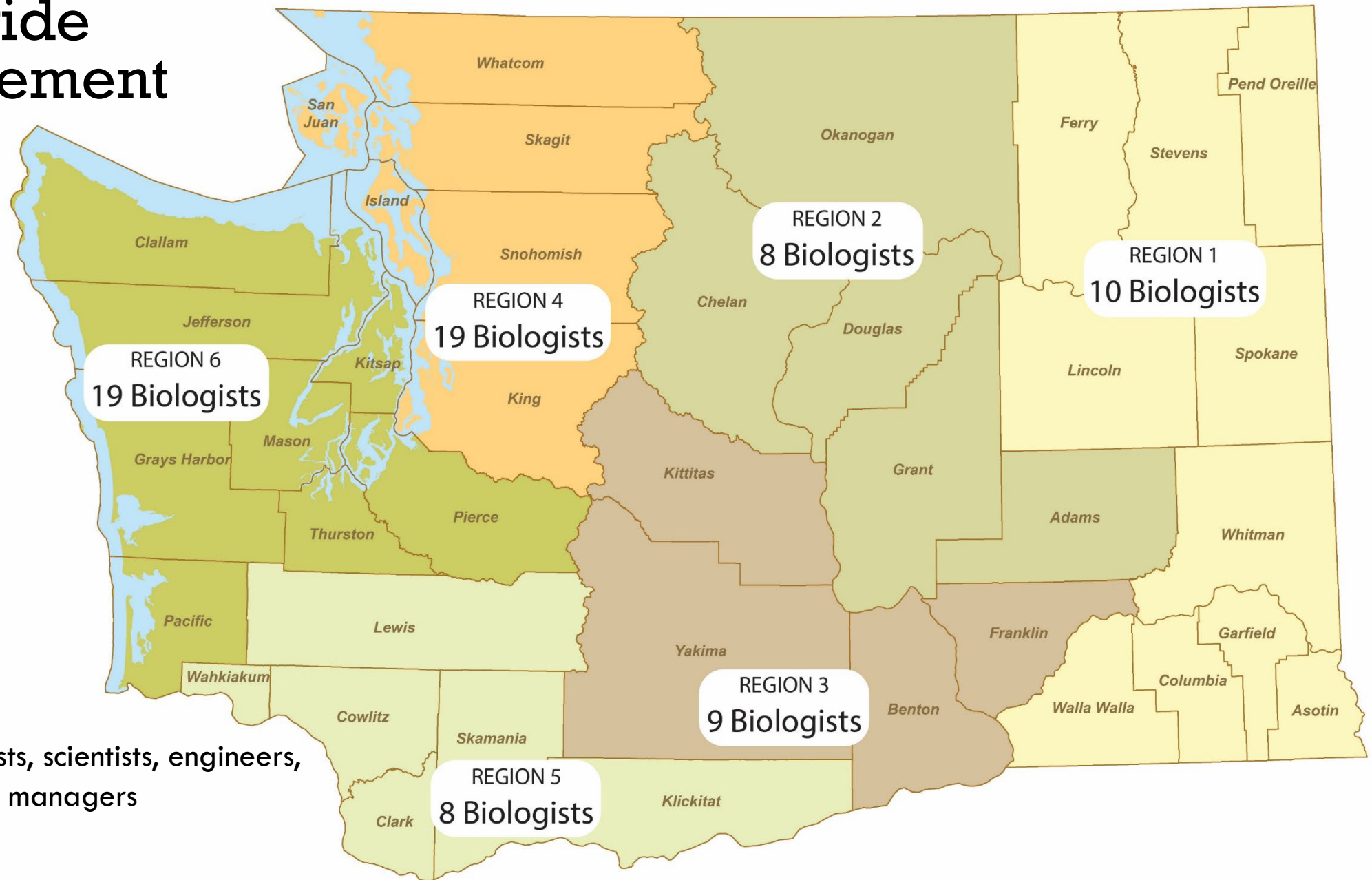
-  Major River Systems
-  Marine and Nearshore
-  Shrubsteppe



WDFW Habitat Program Washington State Land Ownership



Statewide engagement



OLYMPIA HQ
~145 Biologists, scientists, engineers,
planners, and managers



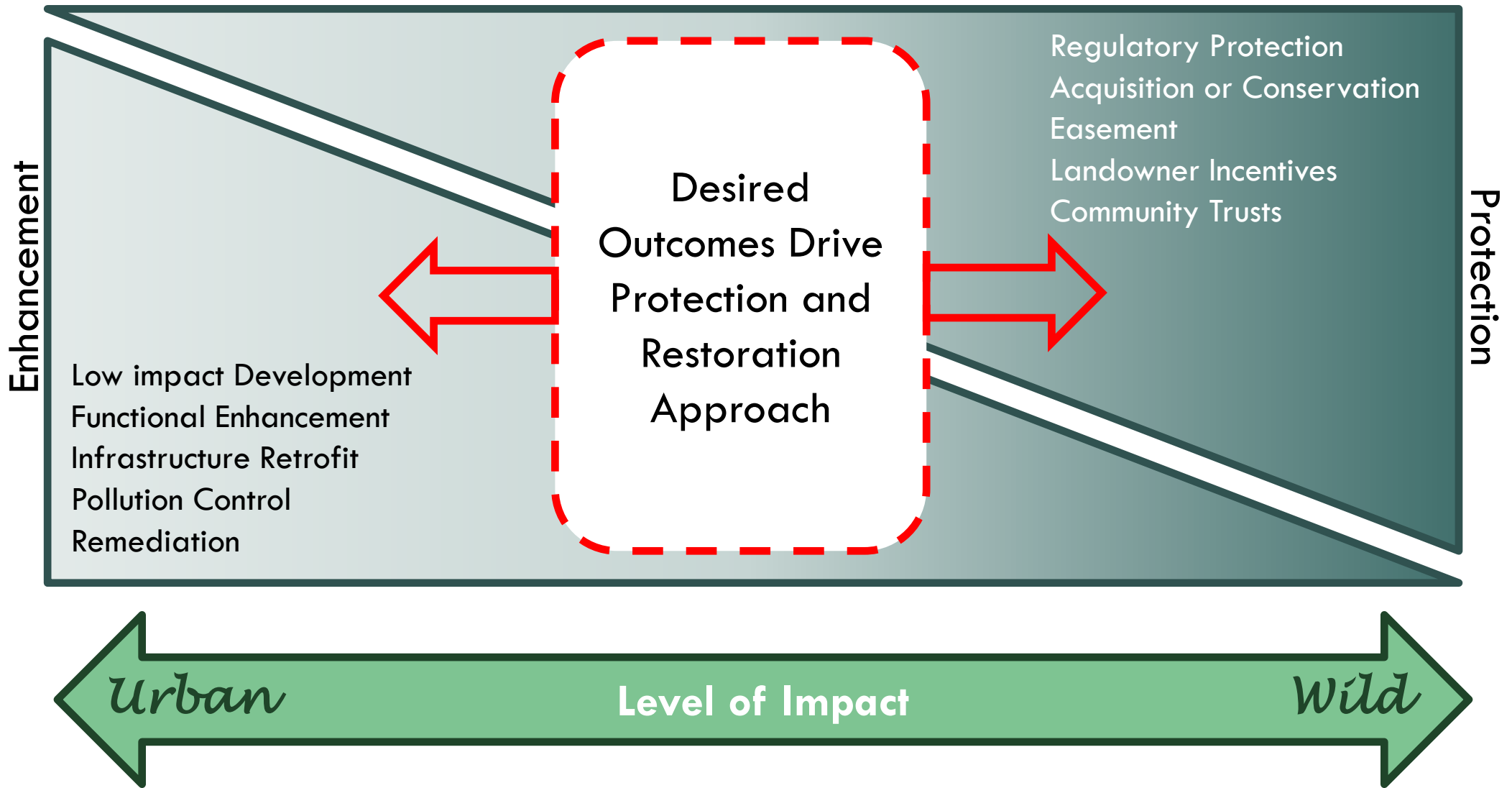


BIG PICTURE –
ACHIEVING BETTER OUTCOMES FOR FISH, WILDLIFE, AND
THEIR HABITATS AT SITE AND LANDSCAPE SCALES BY
AVOIDING, MINIMIZING, OR COMPENSATING FOR IMPACTS



FINDING BALANCE BETWEEN HUMAN ACTIVITIES AND ECOLOGICAL OUTCOMES

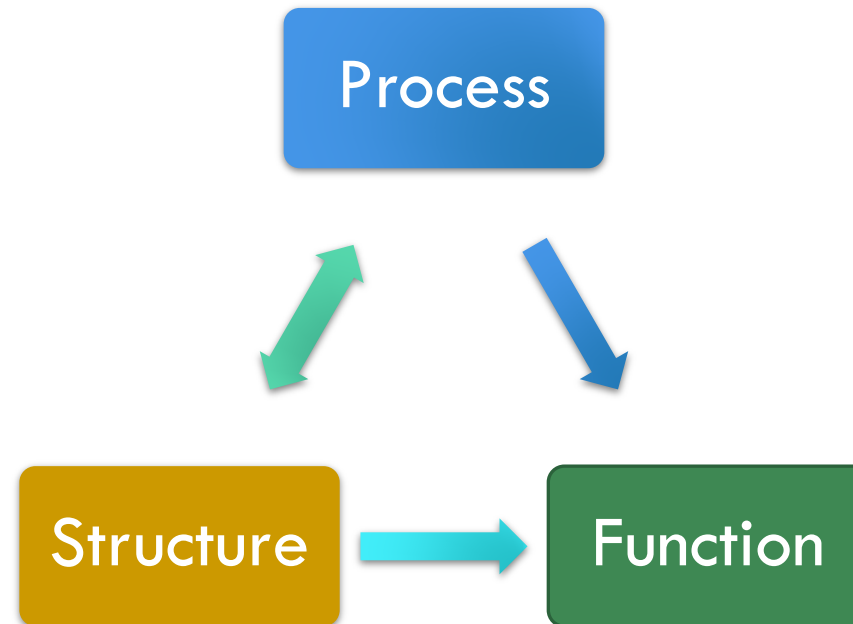




PSNERP's process-based approach to restoration :

Natural **processes** create the **structure** of habitats, which support ecological **functions** for species and people.

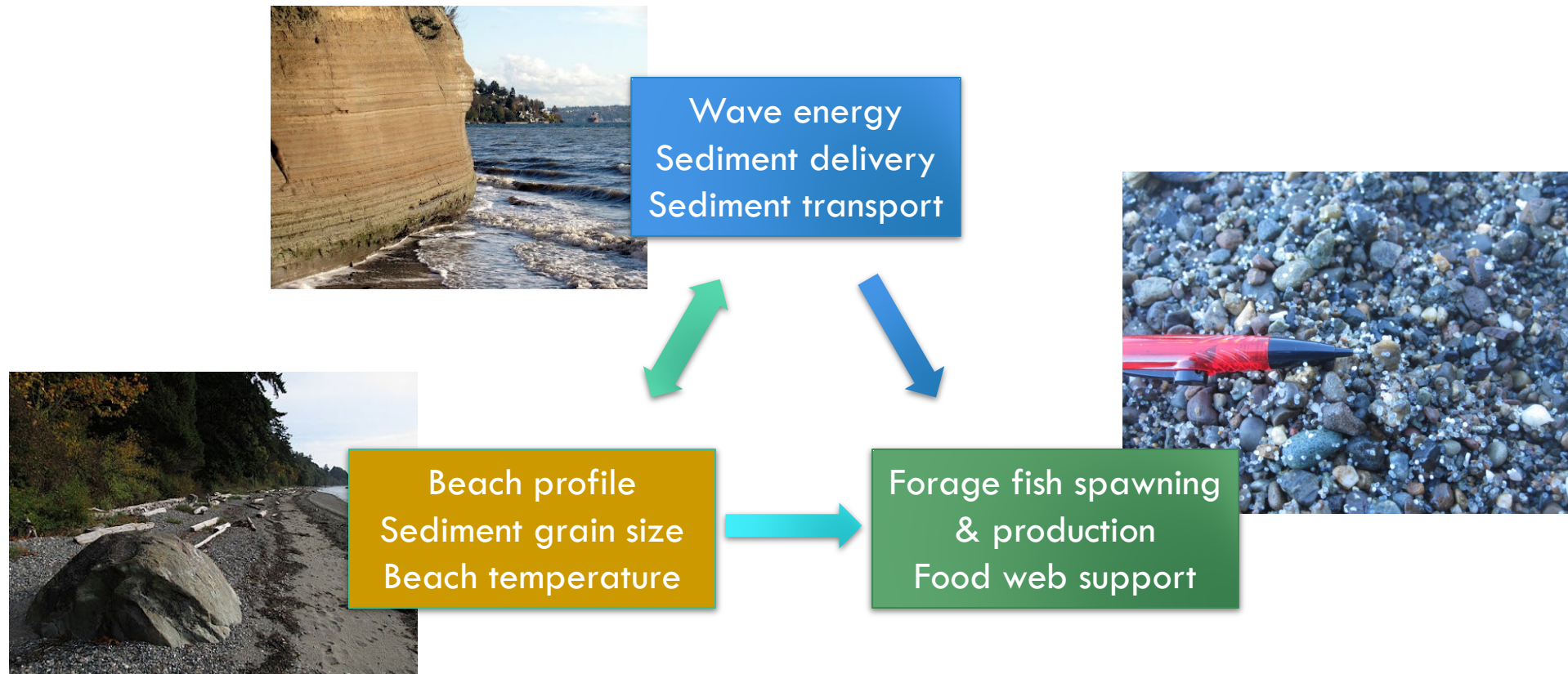
Conceptual Model



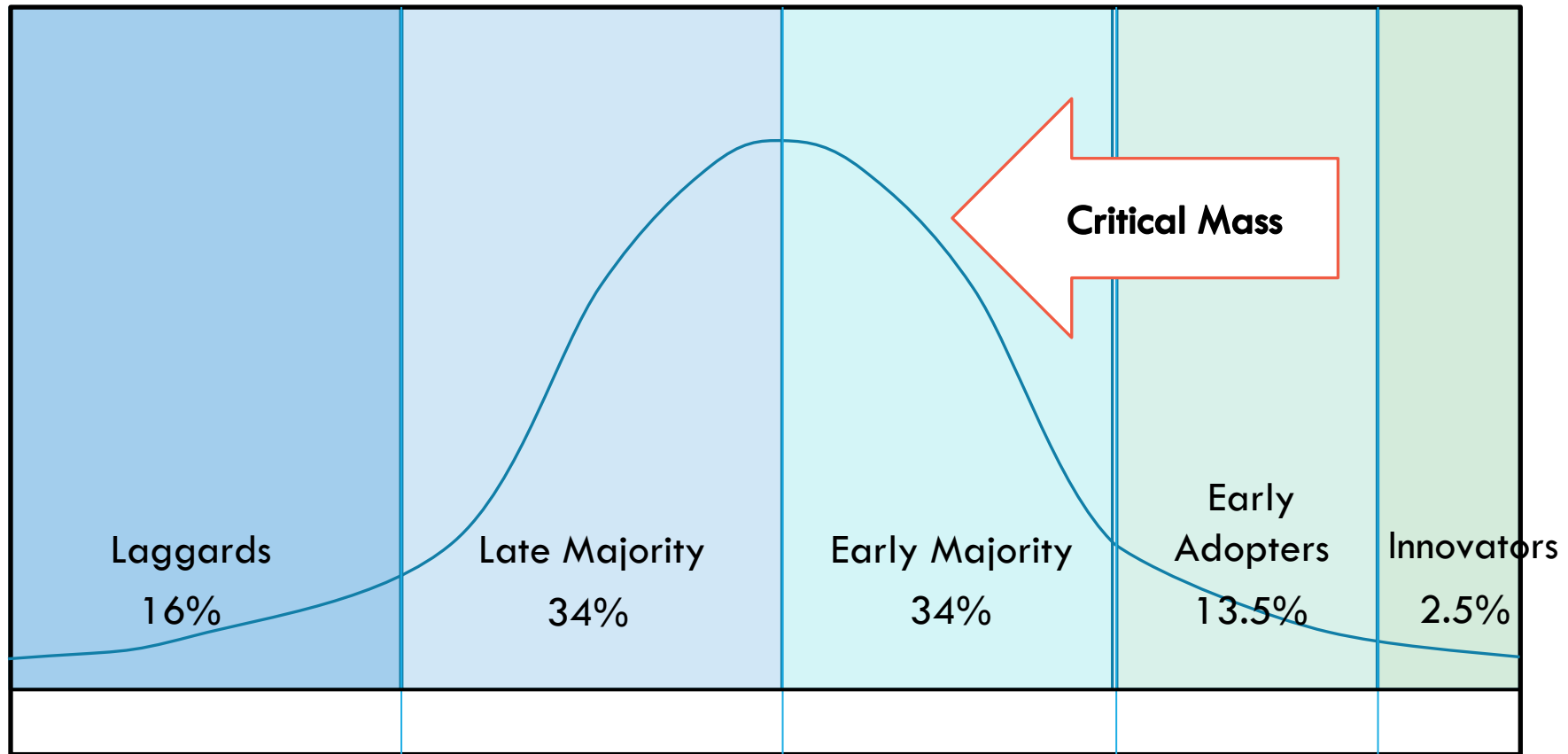
PSNERP's process-based approach to restoration :

Natural **processes** create the **structure** of habitats, which support ecological **functions** for species and people.

Conceptual Model: the role of Puget Sound nearshore beaches in sustaining Pacific sand lance



DIFFUSION OF INNOVATION AND HUMAN BEHAVIOR





**PROTECT FISH HABITAT DURING
CONSTRUCTION (HPAS)**



HELP PEOPLE PROTECT FISH





ENSURE EFFECTIVE FISH PASSAGE AND SCREENS



RESTORE FISH ACCESS





FISH SCREENING

- Help water users protect fish, including Chinook
- Prevent fish from getting into irrigation ditches, pipes, or other water diversions

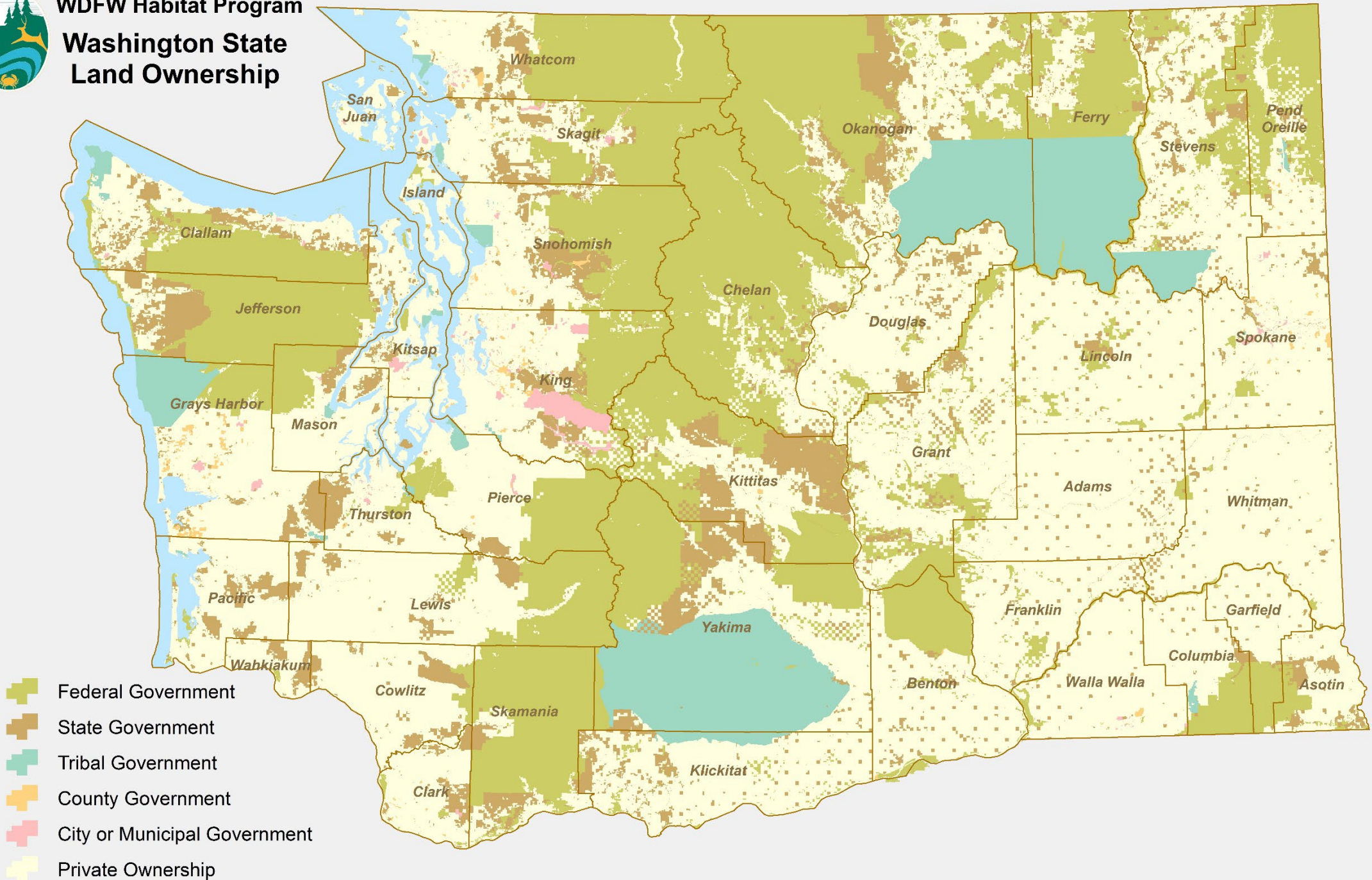




**HELP LAND USE PLANS PROTECT AND
RESTORE
HABITAT AND CONNECTIVITY**

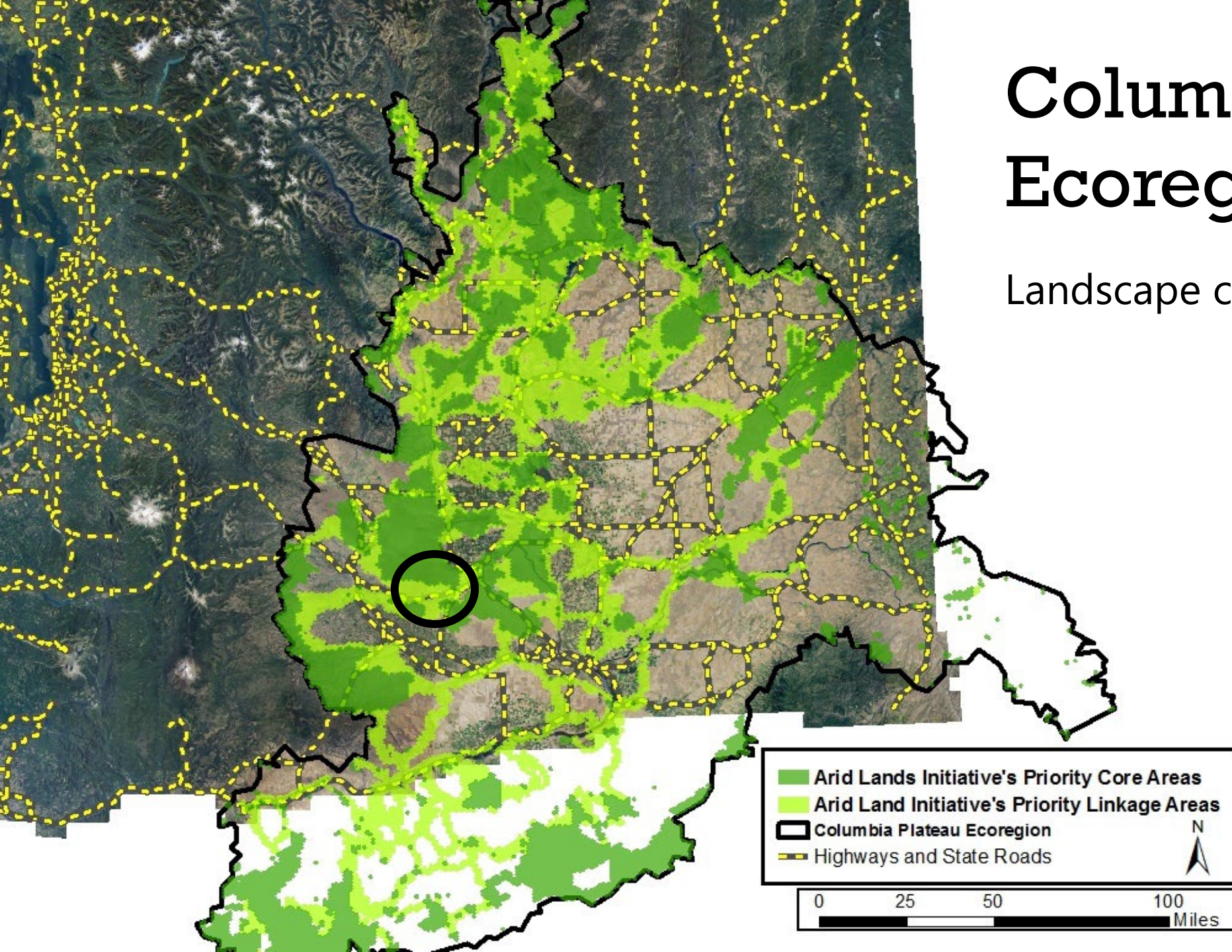


WDFW Habitat Program Washington State Land Ownership



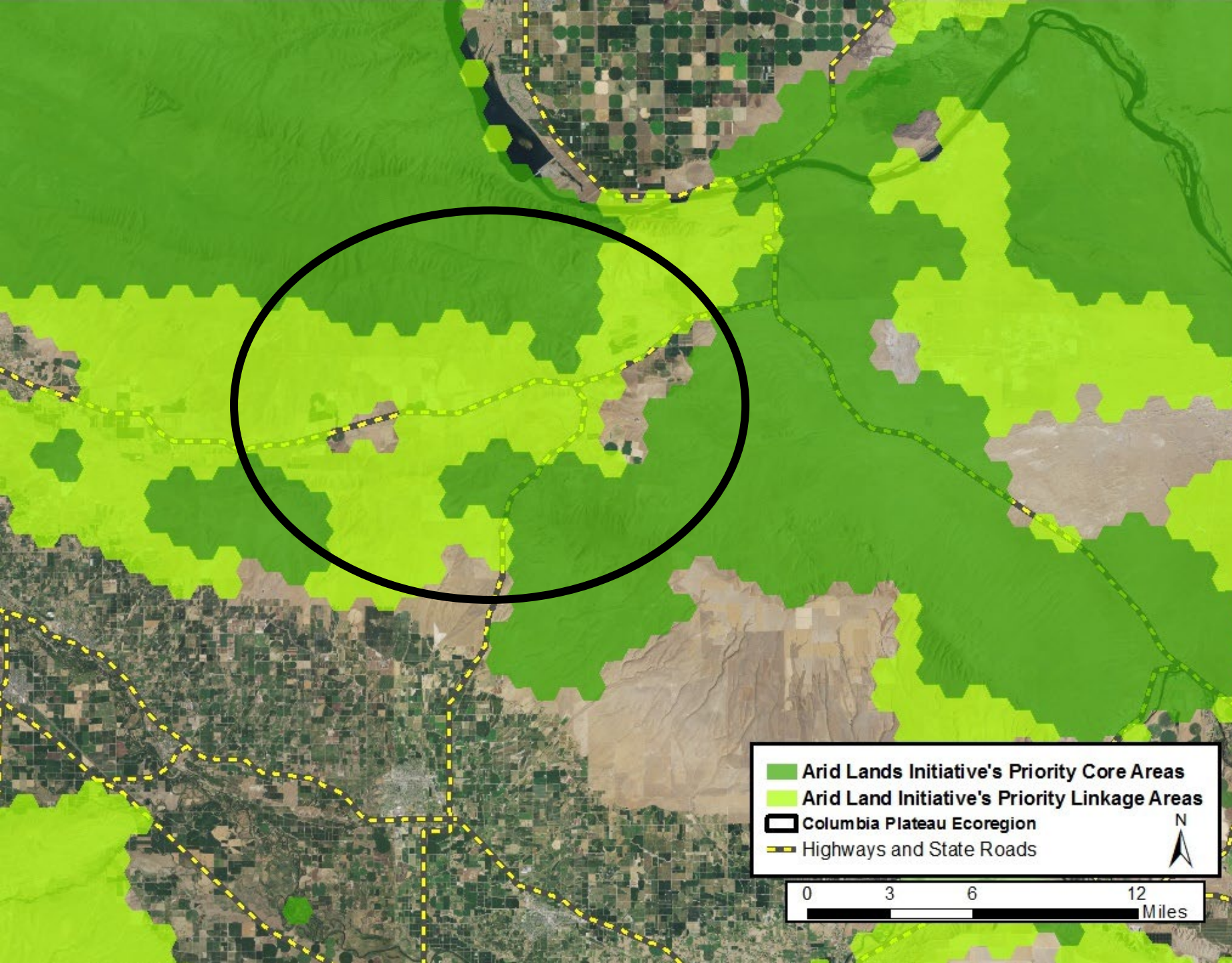
Columbia Plateau Ecoregion

Landscape conservation priorities



Blackrock Valley

- Essential habitat corridor
- Solar energy planned with miles of fencing



Connecting habitat





HEALTHY FORESTS AND SUSTAINABLE FOREST PRACTICES

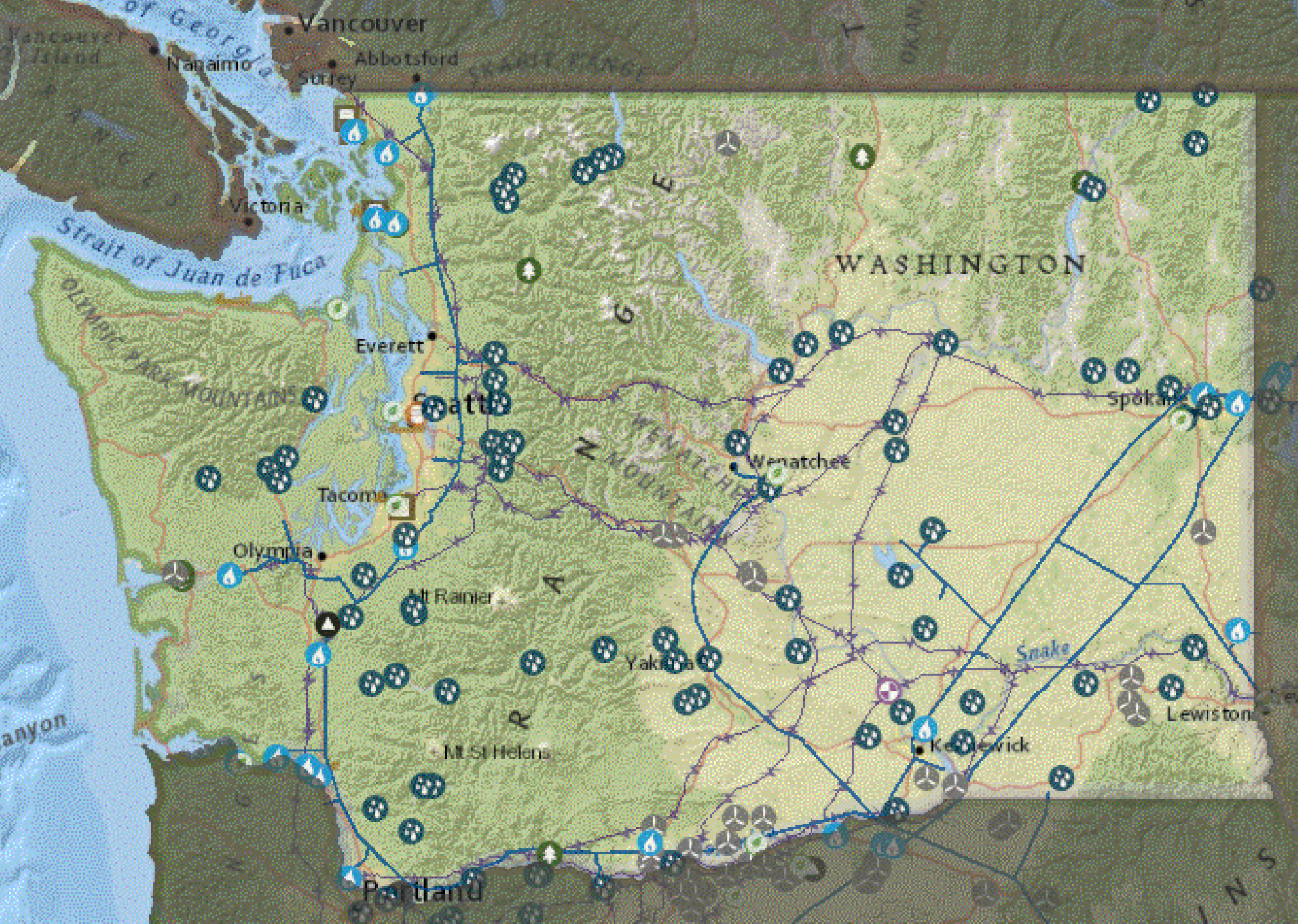


MANAGE FORESTS, ENHANCE HABITAT





**BALANCE HABITAT PROTECTION WITH
ENERGY GENERATION AND
TRANSMISSION**







- Hydroelectric Power Plant
- Natural Gas Power Plant
- Nuclear Power Plant
- Other Power Plant
- Other Fossil Gases Power Plant
- Petroleum Power Plant

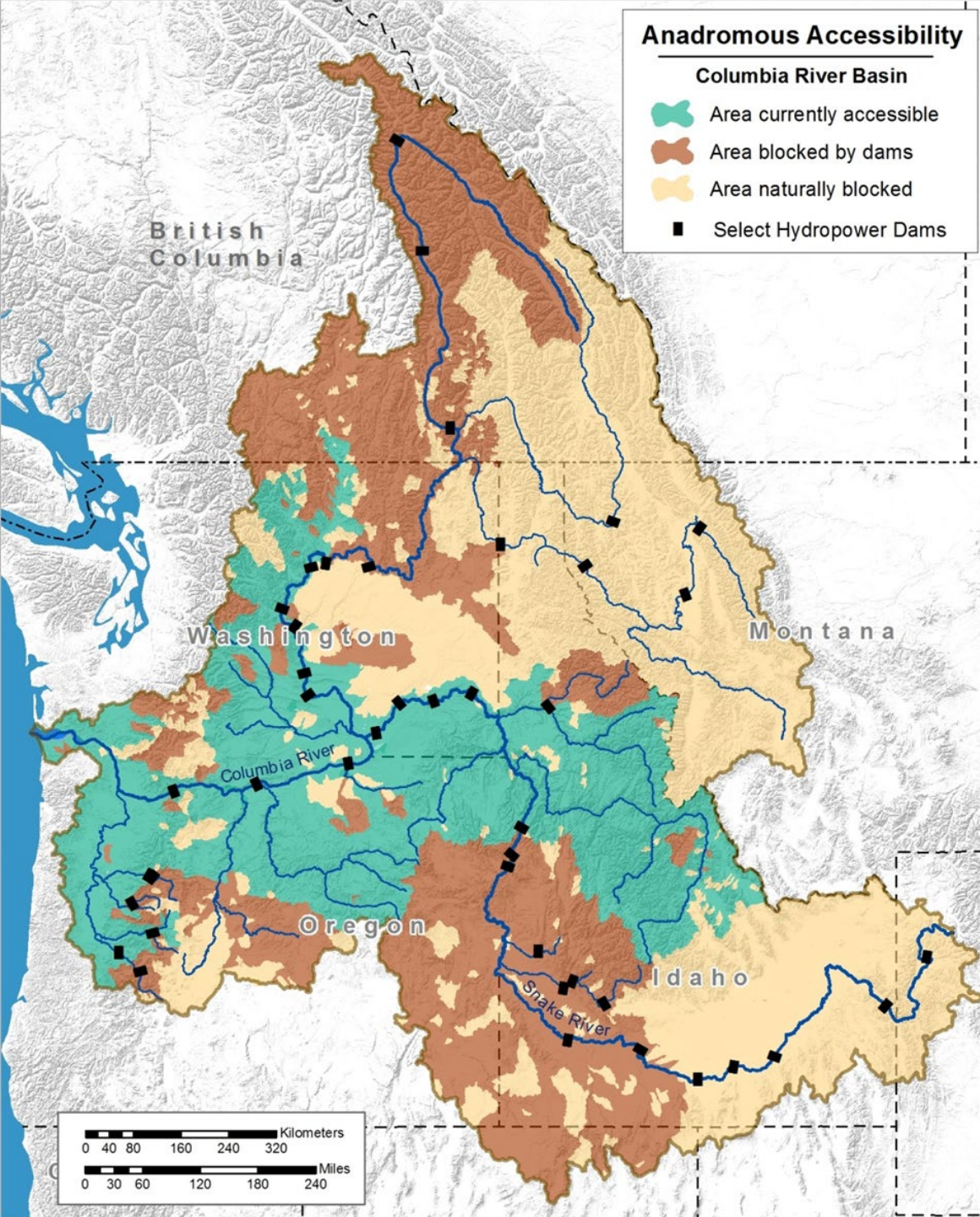
- Mask
- Surface Coal Mine
- Underground Coal Mine
- Biomass Power Plant
- Coal Power Plant
- Geothermal Power Plant

- Pumped Storage Power Plant
- Solar Power Plant
- Wind Power Plant
- Wood Power Plant
- Petroleum Refinery
- Strategic Petroleum Reserve

Anadromous Accessibility

Columbia River Basin

-  Area currently accessible
-  Area blocked by dams
-  Area naturally blocked
-  Select Hydropower Dams





WATER RESILIENCY FOR PEOPLE, FISH AND WILDLIFE



Drought impact: fish passage



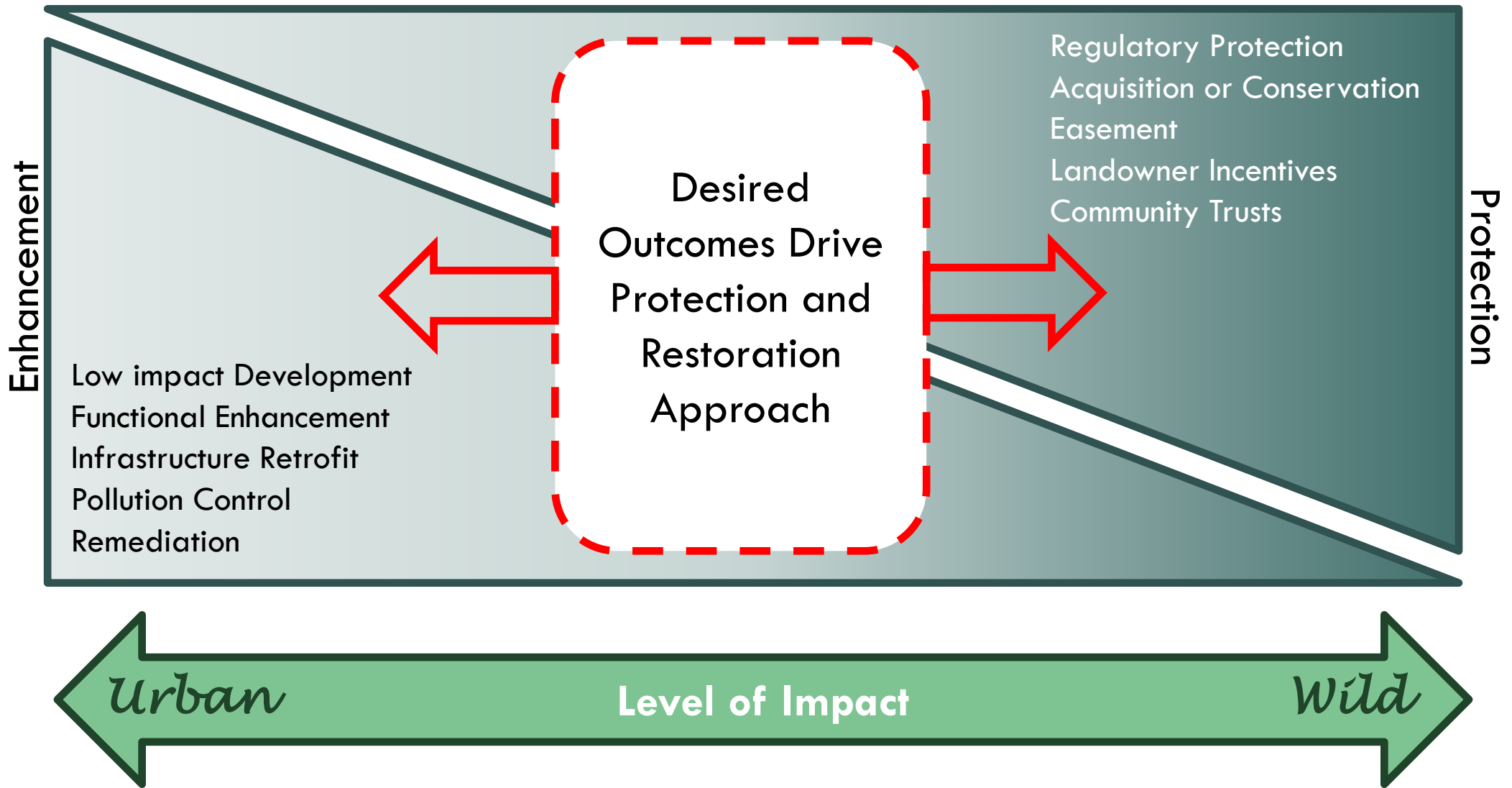


Resilient Instream Flows





**RESTORE HABITAT TO ADVANCE SPECIES
RECOVERY**



Restoring estuary habitat





CATASTROPHIC EVENT RESPONSE

WILDFIRE





Oil spills

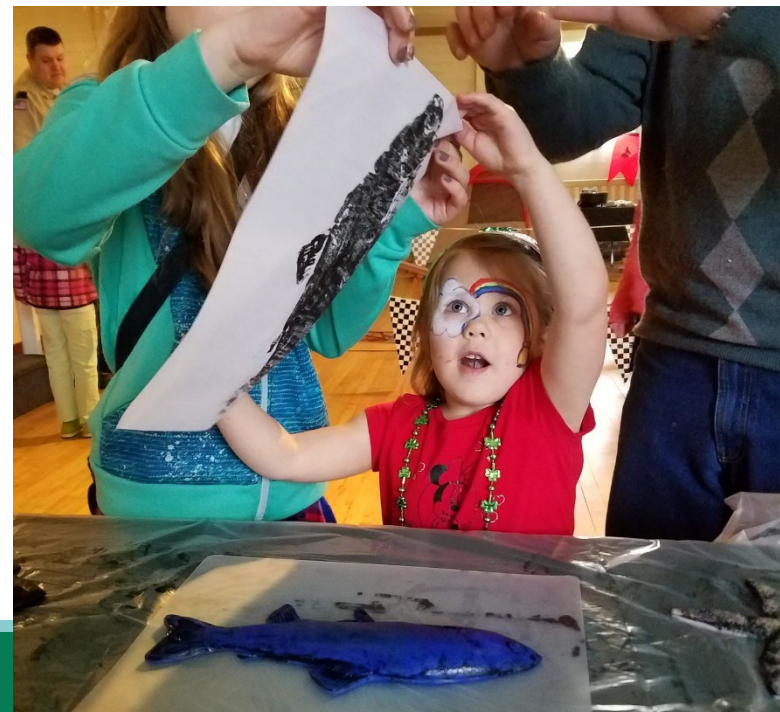


FLOODING



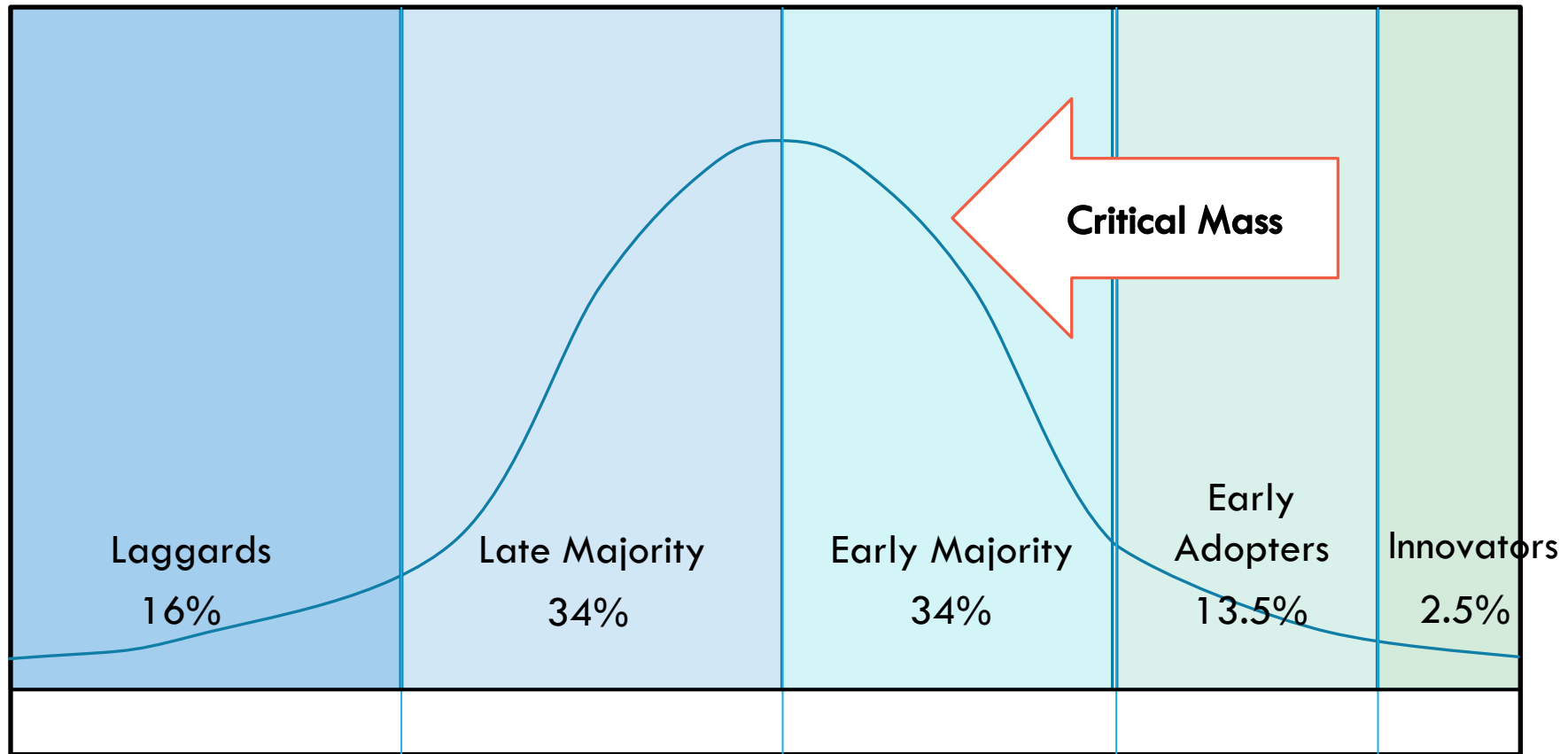


**ENGAGE PEOPLE, PROTECT
HABITAT**



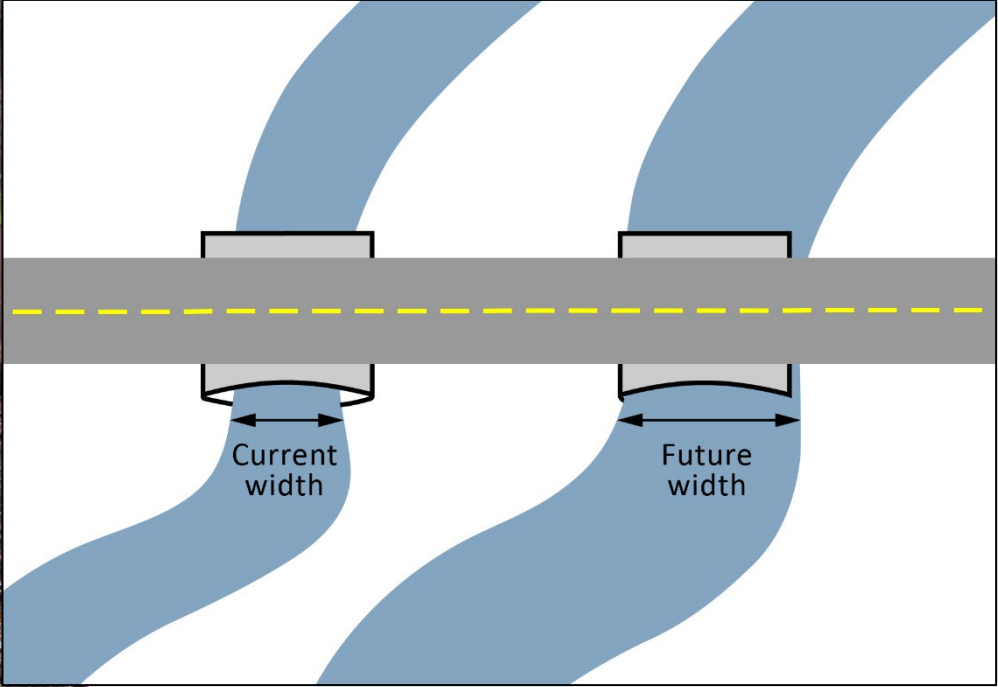
CONNECT PEOPLE TO HABITAT

DIFFUSION OF INNOVATION AND HUMAN BEHAVIOR





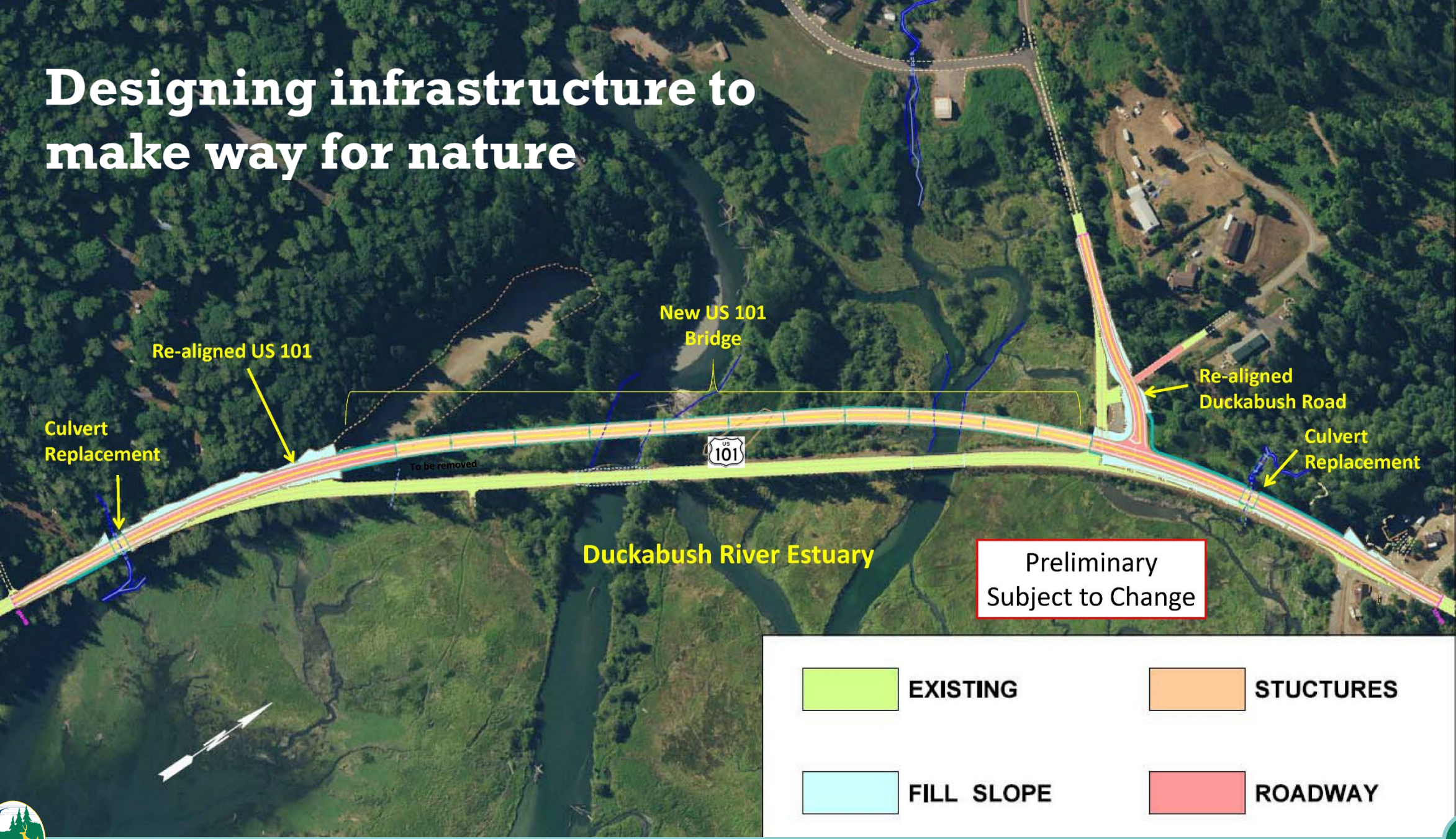
PLANNING FOR THE FUTURE



Culverts and climate change



Designing infrastructure to make way for nature





Credit: John Gussman

Department of Fish and Wildlife

Strategic Plan outcomes



25-YEAR STRATEGIC PLAN

A Path to an Improved Era
for Fish, Wildlife and People



WD
F&W

QUESTIONS?

Margen Carlson

Margen.Carlson@dfw.wa.gov

Chuck Stambaugh-Bowey

Charles.Stambaugh-Bowey@dfw.wa.gov

