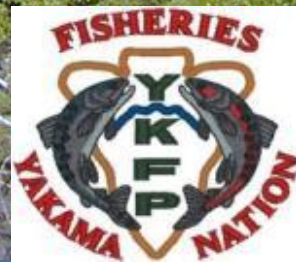


# Klickitat Hatchery Property Transfer

Mike Livingston & Trevor Hutton – WDFW  
Phil Rigdon & Bill Sharp – Yakama Nation



Washington Department of  
**FISH & WILDLIFE**



# Yakima/Klickitat Fisheries Project

- The YKFP established in 1982 - NPCC's F&W Program
- NPCC instructed YN, WDFW and BPA to address uncertainties regarding adequacy of hatchery supplementation for meeting production objectives and limiting adverse ecological and genetic impacts.
- Apply a scientifically rigorous process that fosters application of knowledge gained about hatchery supplementation and habitat restoration throughout the Columbia River Basin.
- Collaboration between YN & WDFW staff throughout the Yakima and Klickitat River watersheds on fisheries, habitat, instream flows, production, etc.
- YN ownership of existing production facilities throughout Yakima River Basin

# Klickitat Hatchery Overview

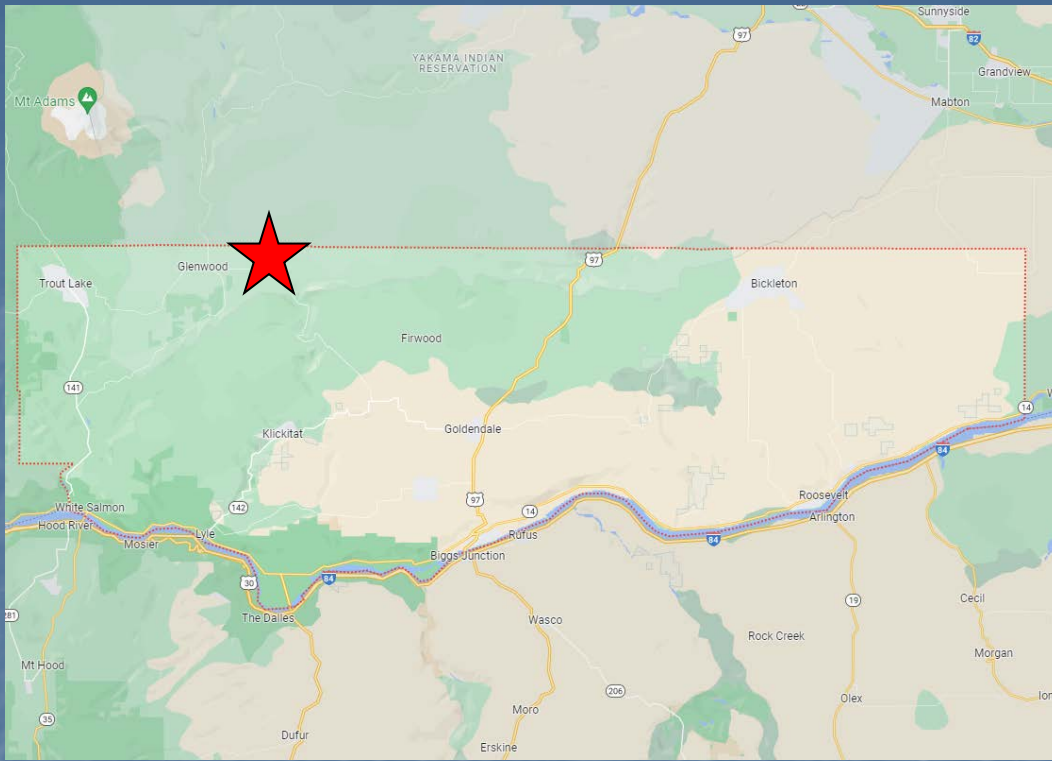


## Facility History:

- Constructed with Mitchell Act funding, 1949-1951
- In continuous operation since 1951
- Operation and Mitchell Act funding transferred to the YN in 2006
- Lies within "Tract D" portion of Yakama Reservation

## Current Production:

- Segregated harvest programs, all stocks
- US v. OR Production Goal:*
- 4,000,000 Fall Chinook (subyearling)
  - 1,000,000 Coho (Late, yearling)
  - 600,000 Spring Chinook (yearling)
- WDFW Orca Production Goal:*
- 1,000,000 Fall Chinook (subyearling)



# Location



# History of Joint Management:

- **1994 – YKFP MOU between YN/WDFW**
- **2003 – Transition Plan MOU**
- **2005/2006 – Lease and Joint Operation MOA**
- **NMFS transfer Mitchell Act funding to YN**
- **2022 – Request from YN to complete transfer**

## Accord

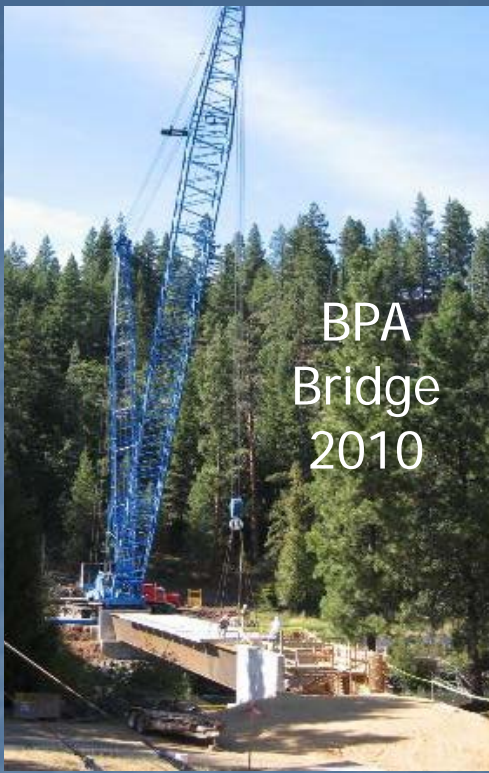
### Infrastructure improvements:

- Vehicle Bridge, \$1,700,000

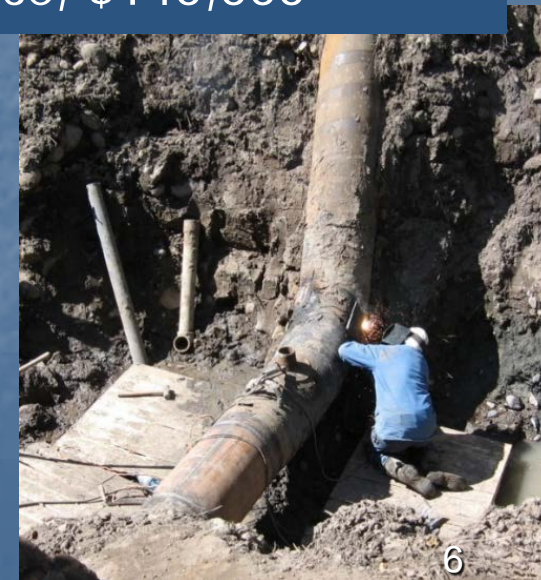
## Non-Accord

### Infrastructure improvements:

- 3-Phase Power, \$180,000
- Fish Transport, \$250,000
- Truck Storage/Shop, \$150,000
- Incubation Chiller, \$630,000
- Circular Rearing Tanks – SRKW Prey, \$150,000
- Manpower/Deferred Maintenance, \$140,000

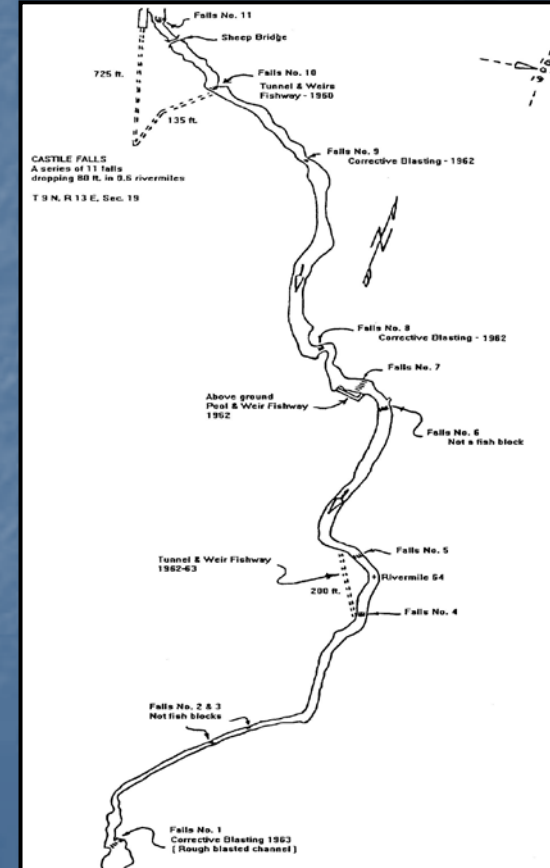
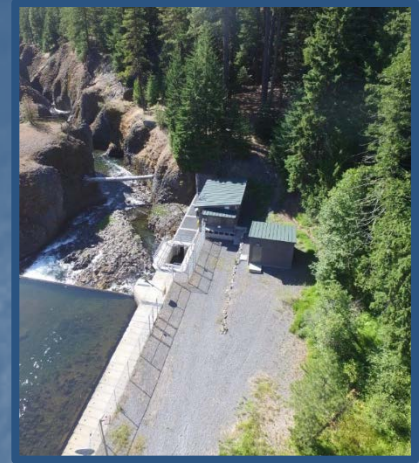


BPA  
Bridge  
2010



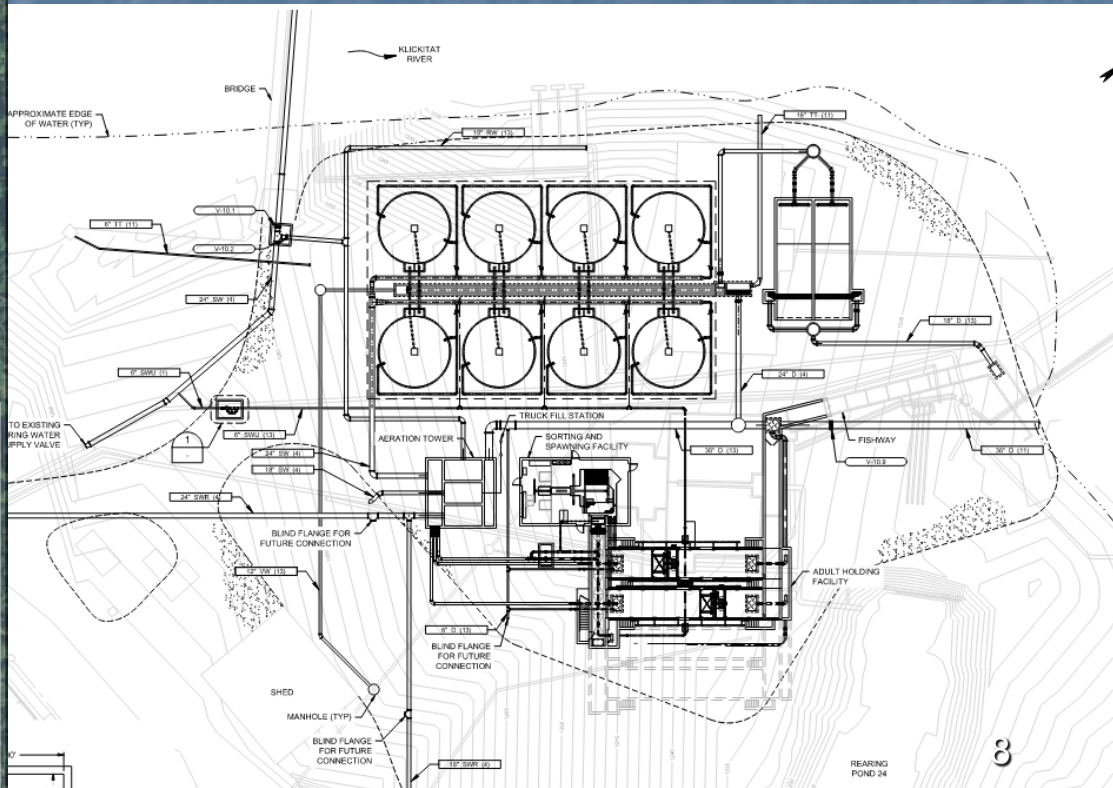
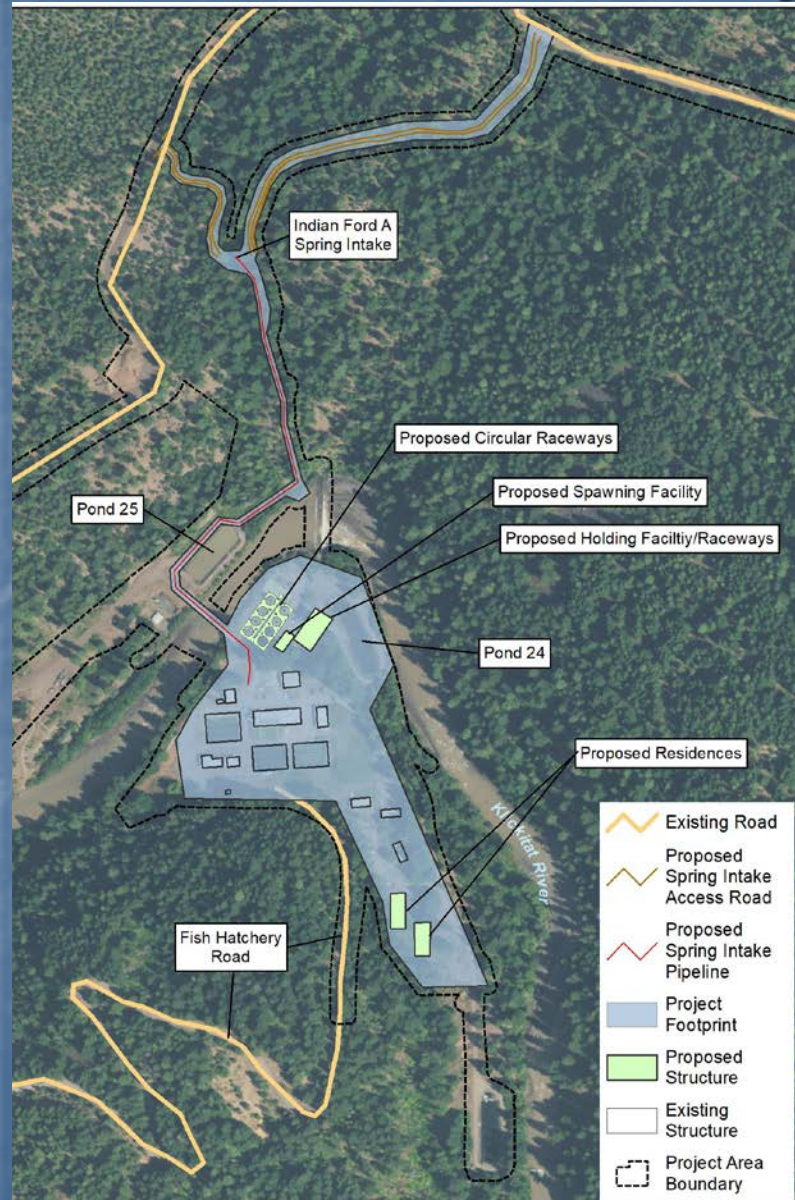
# LYLE ADULT TRAP and CASTILE FALLS FACILITY

- Fish Accord – BPA Capital (\$13,000,000)
- Adult Escapement Monitoring & Brood Collection
- Castile Passage Monitoring
  - 33 miles of spawning/rearing habitat, underutilized
  - Fishway 4/5 evaluation underway with NMFS.



# Klickitat Hatchery Capital Construction Project Overview

- Spring Intake and Water Supply Line Rehab.
- Circular Rearing Tanks
- Adult Holding & Spawning Building





# Integrated Spring Chinook Master Plan

The co-managed YKFP formed under Northwest Power & Conservation Council

- Capital Facility Construction – 3 Step Master Planning process.
- Step III review – June 2023

Capital construction funds available - BPA/YN Fish Accord Agreement.

- Sufficient capital resources within the Accords to undertake this project
- 100% Design complete
- NEPA timeline

Klickitat Hatchery - Accord Capital Cnst. Project										
Estimated Timeline	Mar-23	Apr-23	May-23	Jun-23	Jul-23	Aug-23	Sep-23	to	Jan-25	
Vendor Request for Information										
Draft EA Public Comment (30 days)										
EA Revisions										
Bid Ready Design/Specs										
Final EA/FONSI (BPA EC Complete)										
NPCC Check in										
Request for Proposals										
Award/Construction										Est. 17 months

Hatchery Production (*US v OR*) and O&M – NOAA Mitchell Act Appropriations

## Klickitat River Salmon & Steelhead

### Native Stocks:

I. Spring Chinook



II. Steelhead



### Introduced Stocks:

I. Fall Chinook



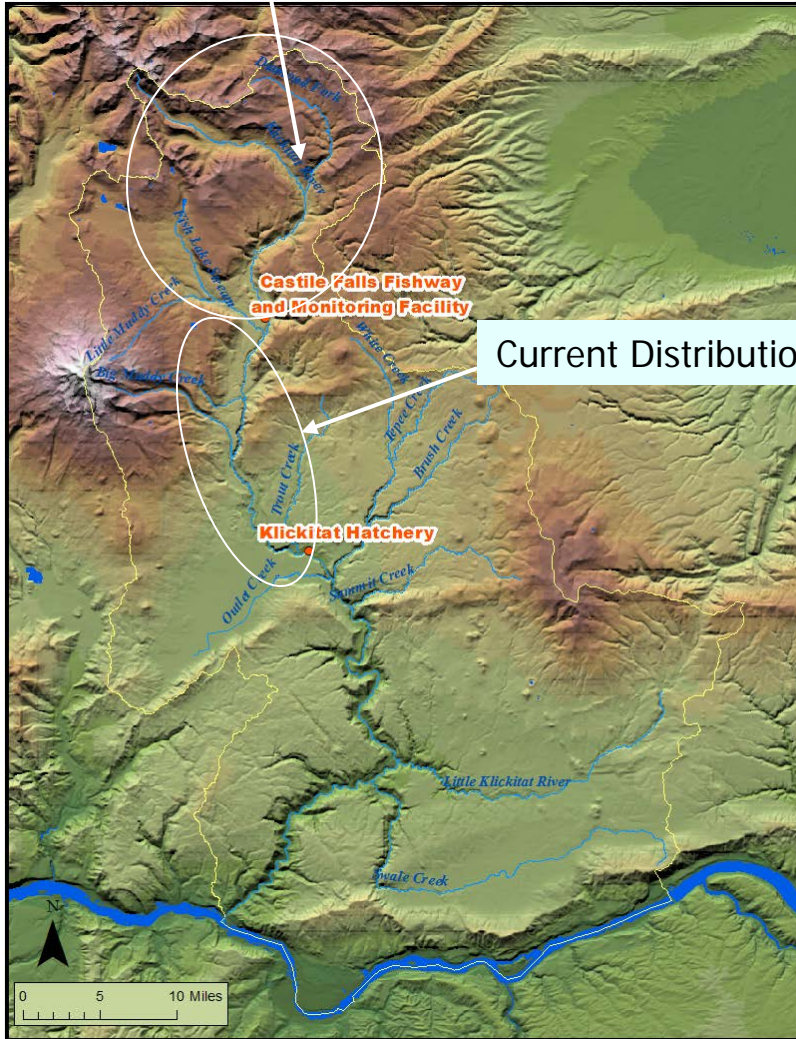
II. Coho



# Spring Chinook Management Objectives:



Upper Klickitat Watershed



Current Distribution

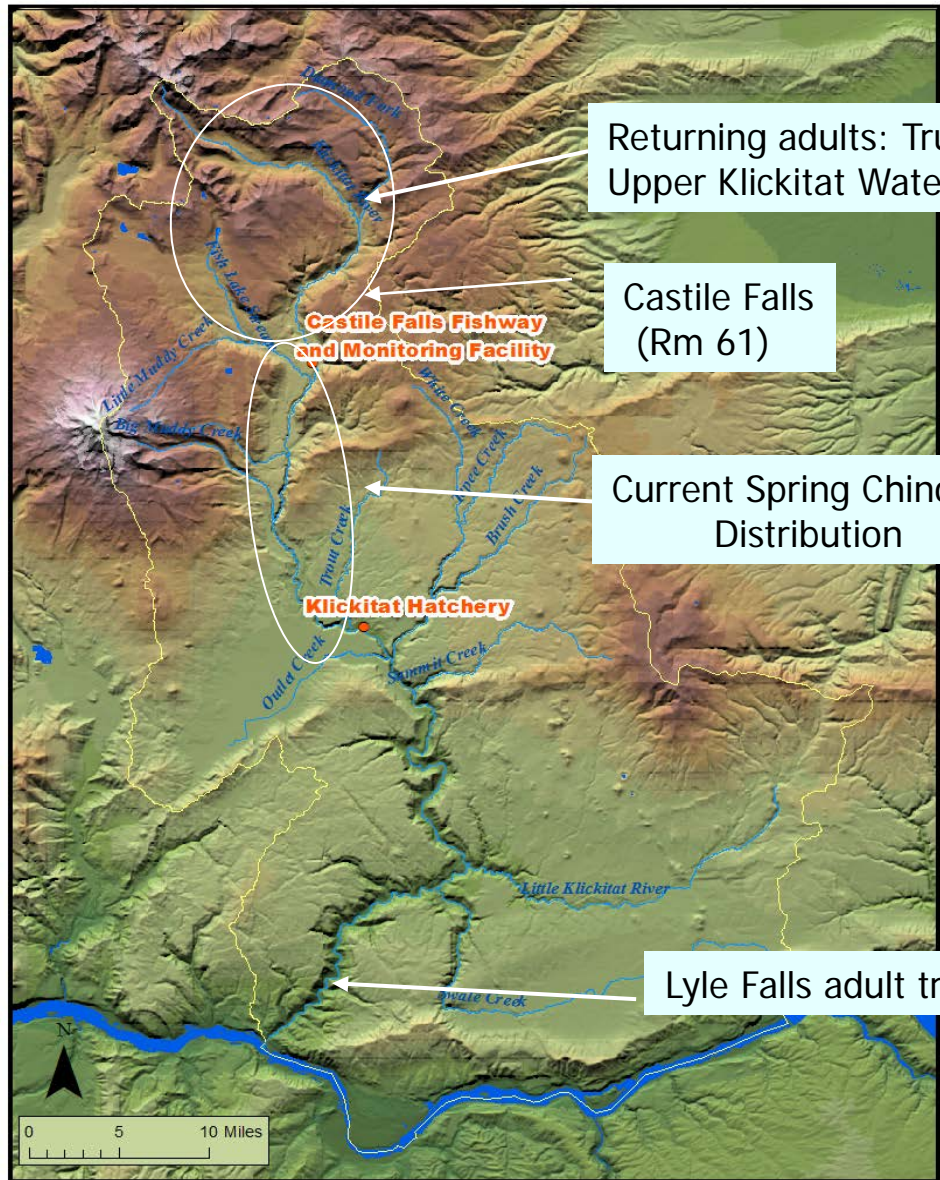
## I. Conservation Objectives:

- *Increase natural population's viability & distribution*
- *Reduce adverse impacts and ecological interactions with hatchery & wild stocks*

## ➤ Strategies:

- Implement hatchery reform measures
- Recolonize upper watershed
- Address environmental limiting factors with habitat restoration

# Integrated Spring Chinook Program



## Future program

- Conservation & Harvest
  - ❑ Integrated program
    - Incorporate greater proportion natural origin fish
  - ❑ Broodstock collection
    - Lyle Falls Trap
  - ❑ ~550 Adults
    - 800k on-station release
  
- Conservation benefits
  - ❑ Increase spawning & rearing distribution
    - Increase abundance
  - ❑ Increase PNI

# Process

- March 17 Commission briefing
- SEPA Checklist and Threshold Determination
  - Public comment period
- Present results of SEPA review to Commission and take additional public comment (Spring 2023)
- Commission decision (Summer 2023)
- If approved, Director and Attorney General certify to Governor

# Questions?

