

# 2022 Annual Wolf Report – Briefing FWC April 7, 2023

Trent Roussin

Statewide Wolf Biologist, Wildlife Program

Gabriel Spence

Statewide Wolf Biologist, Wildlife Program



# Listing Status

Federally Delisted January 2021  
- Relisted February 10, 2022

State Listed – Endangered  
where WDFW has jurisdiction

Wolf Conservation and  
Management Plan: 2011  
– 3 recovery areas  
– Delisting requirements

State and tribal management



# Recovery Objectives

**Pack:** Two or more wolves traveling together in the winter.

**Successful Breeding Pair (SBP):** An adult male and an adult female with at least two pups surviving to December 31<sup>st</sup> in a given year.

## Delisting Objectives in the Plan

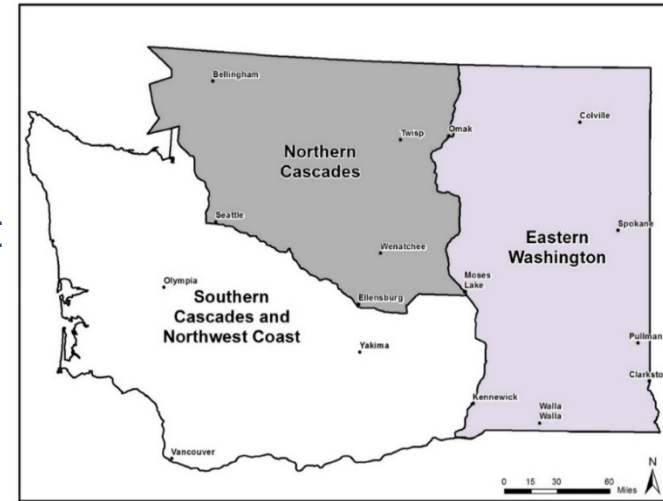
15 SBP's for 3 consecutive years with:

- 4 SBP's in Eastern WA Recovery Area
- 4 SBP's in North Cascades Recovery Area
- 4 SBP's in Southern Cascades and NW Coast
- 3 SBP's anywhere in the state

or

18 SBP's for 1 year with

- 4 SBP's in Eastern WA Recovery Area
- 4 SBP's in North Cascades Recovery Area
- 4 SBP's in Southern Cascades and NW Coast
- 6 SBP's anywhere in the state



# Capture and Monitoring - 2022 Calendar Year

- Captured 29 wolves - From 20 different packs
- Monitored 53 wolves from 27 packs in 2022
- Currently monitoring 37 collared wolves (17% of minimum number of known wolves) from 16 packs (43% of known packs) in Washington



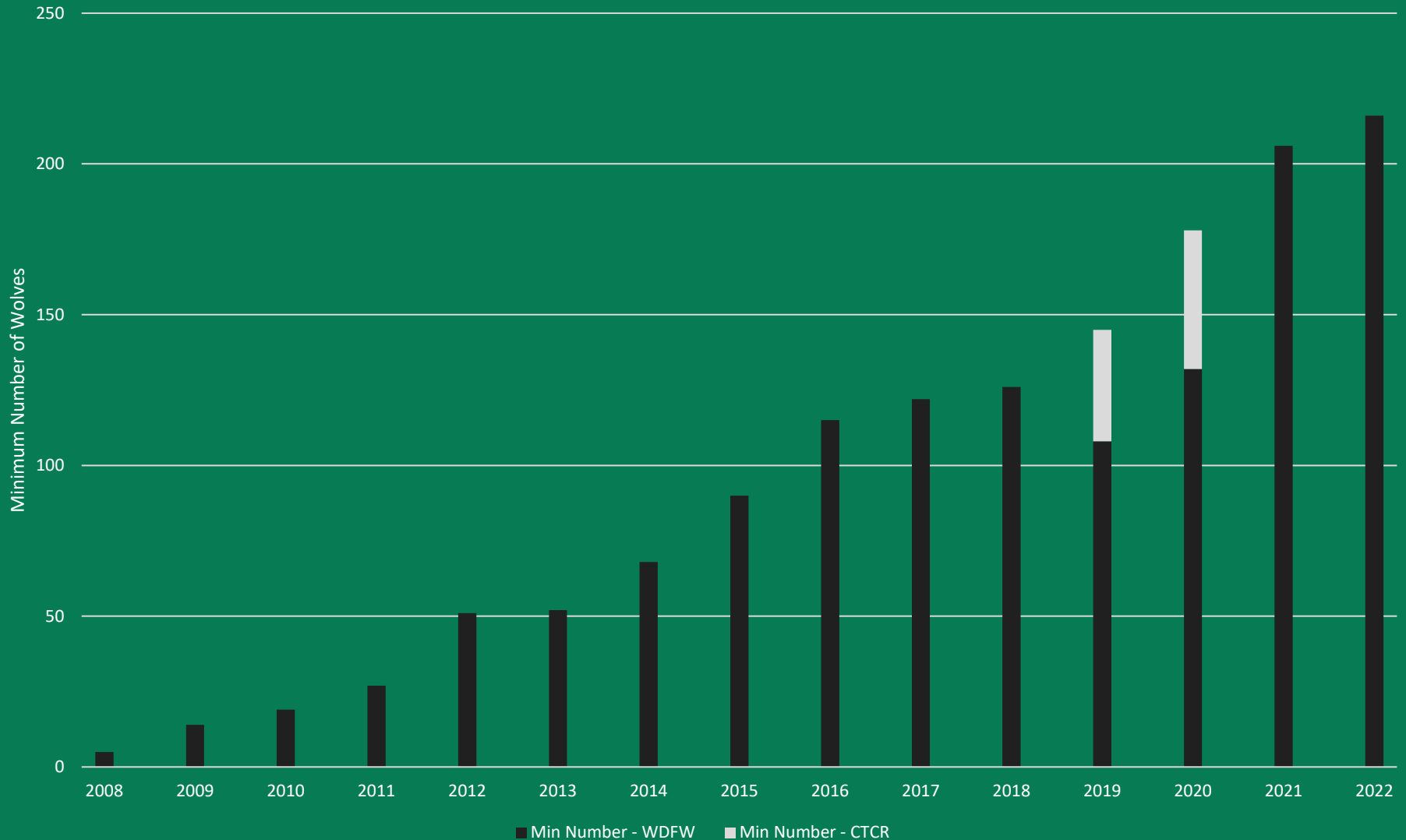


# Wolf Population Status

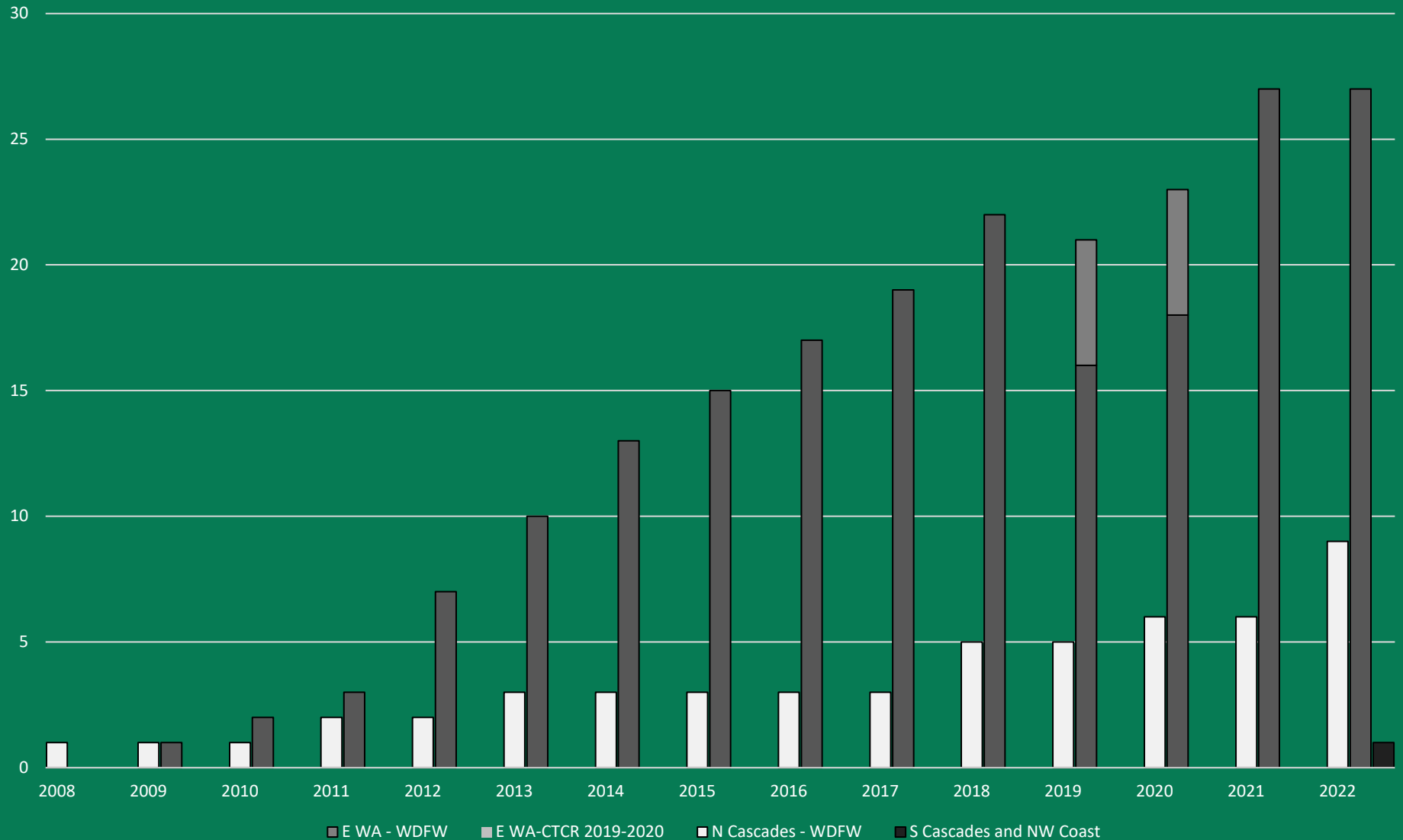
Recovery Region	Successful Breeding Pairs	Minimum Count	Number of Packs
Eastern – WDFW Co-managed	20	159	27
North Cascades	6	55	9
South Cascades / Northwest Coast	0	2	1
Total	26	216	37



# Trend in Minimum Number of Wolves

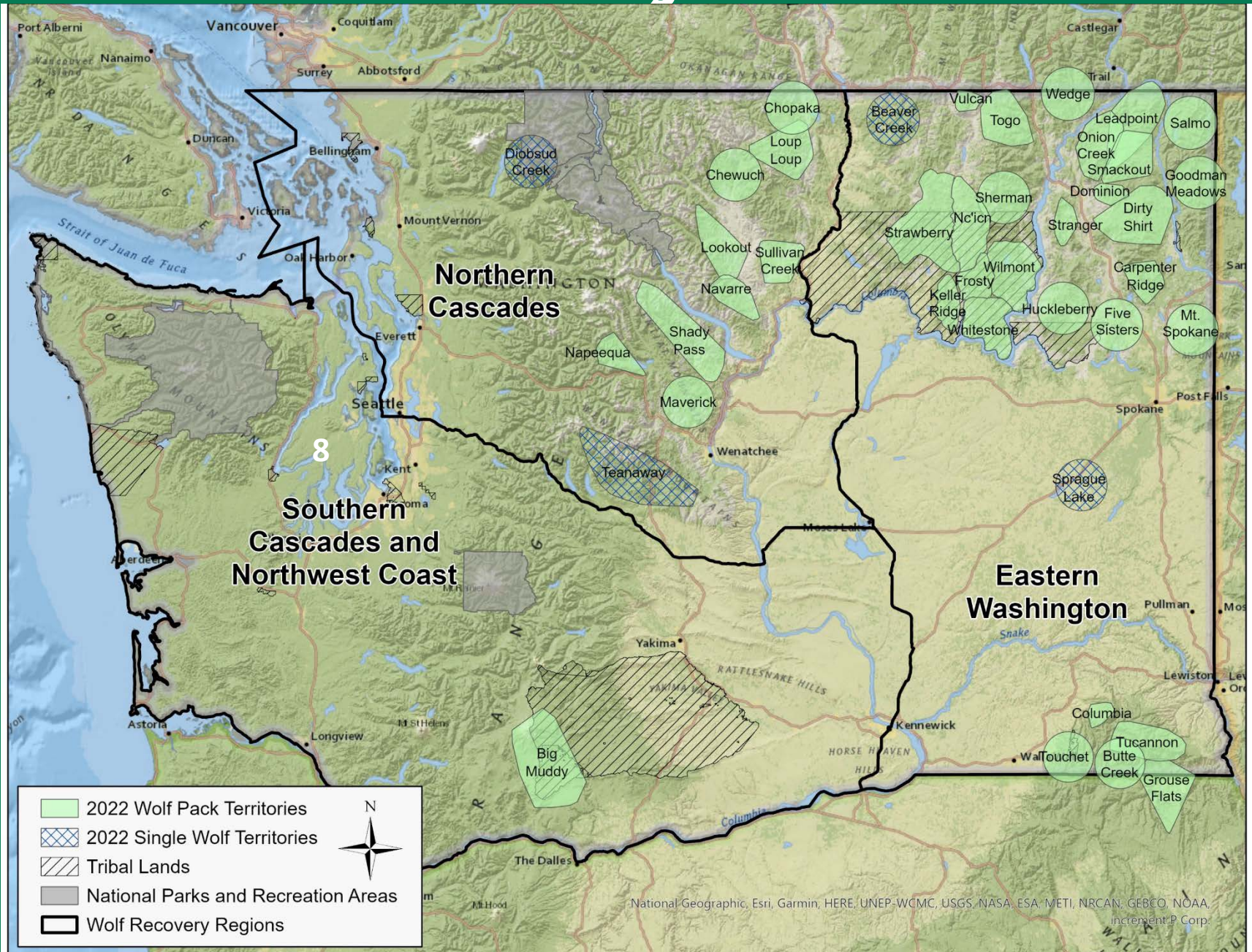


# Trend in Minimum Number of Packs



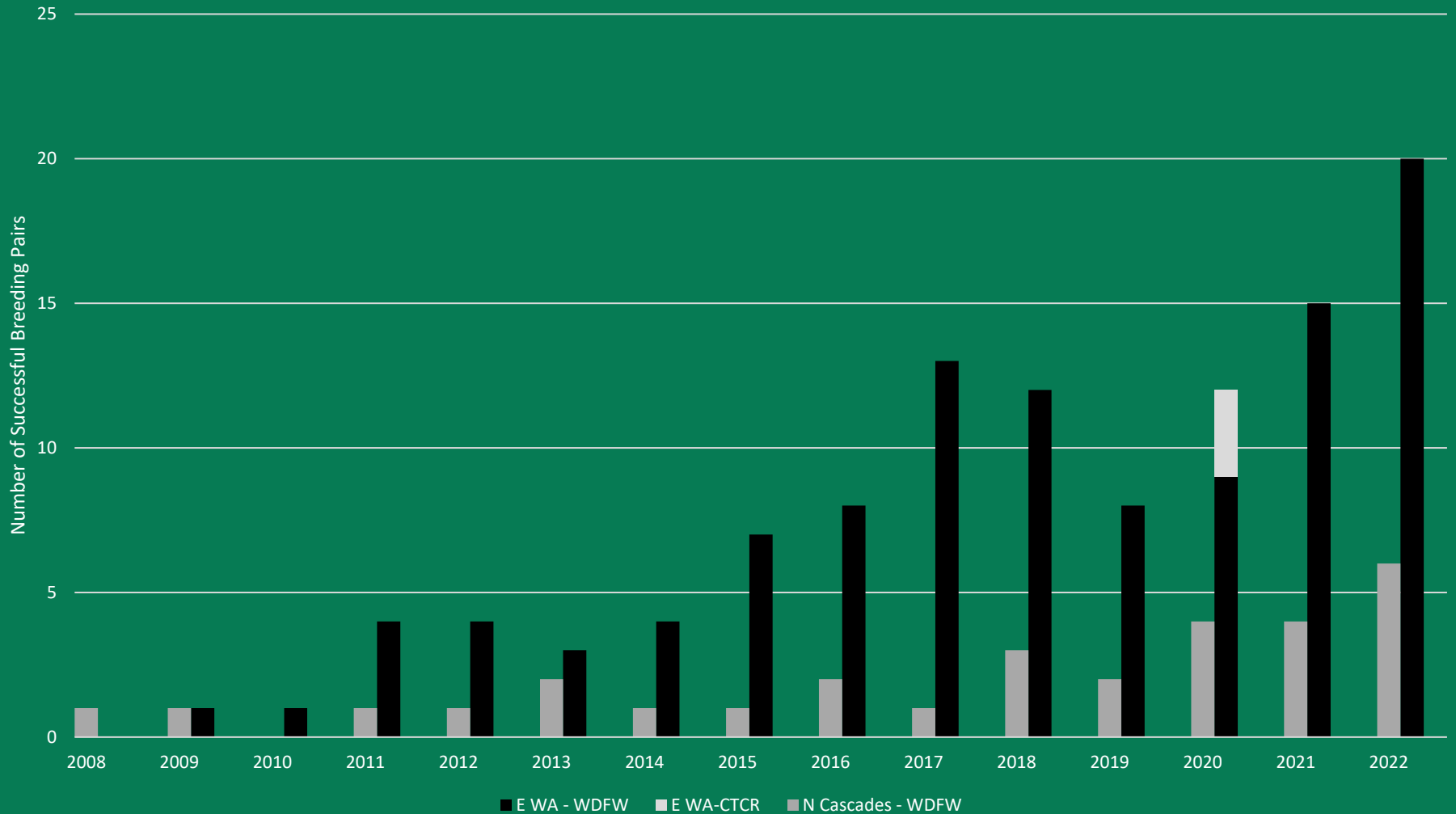


# 2022 Packs and Single Wolf Territories

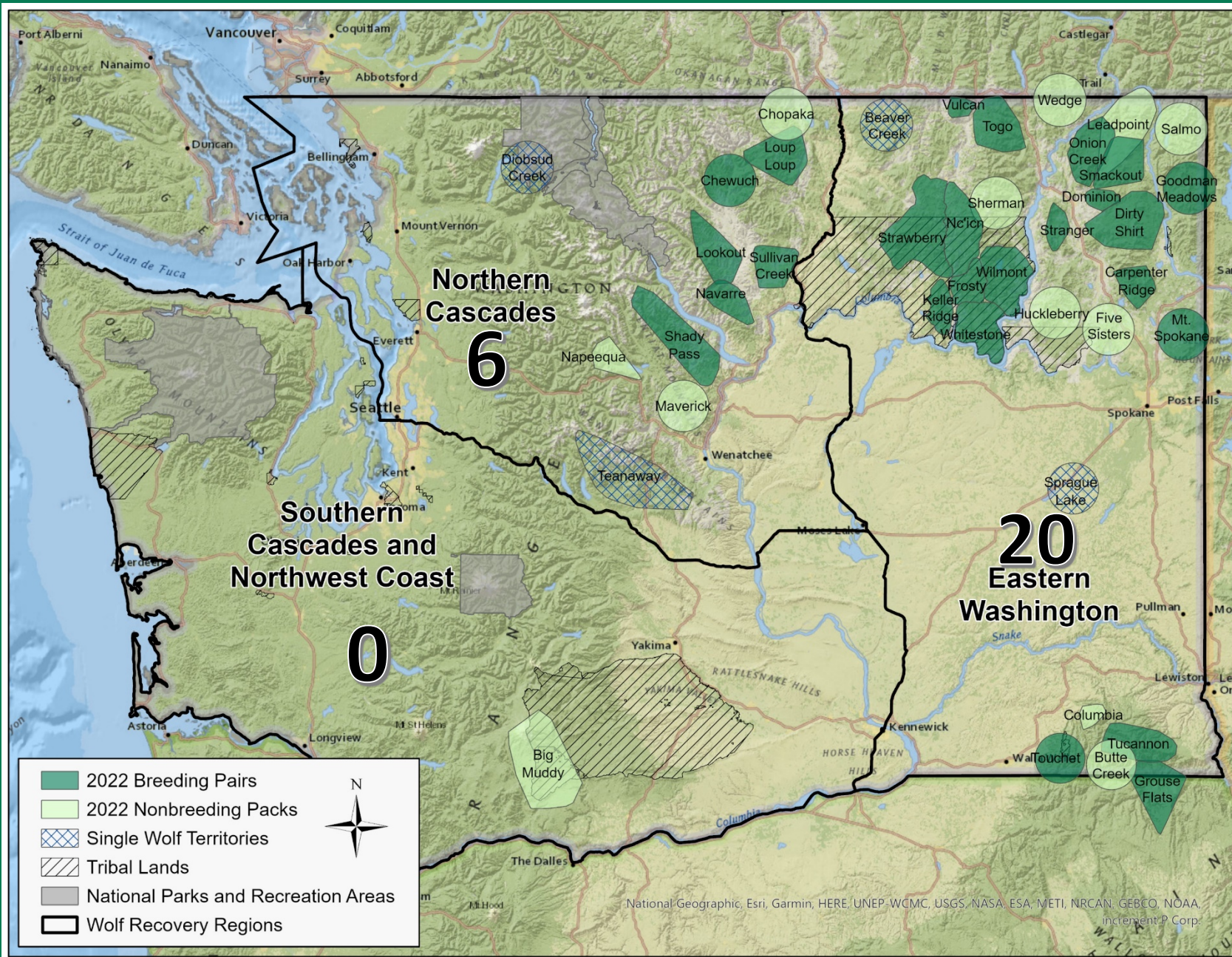




# Trend in Minimum Number of Successful Breeding Pairs (SBP)



# 2022 SUCCESSFUL BREEDING PAIRS (SBP)





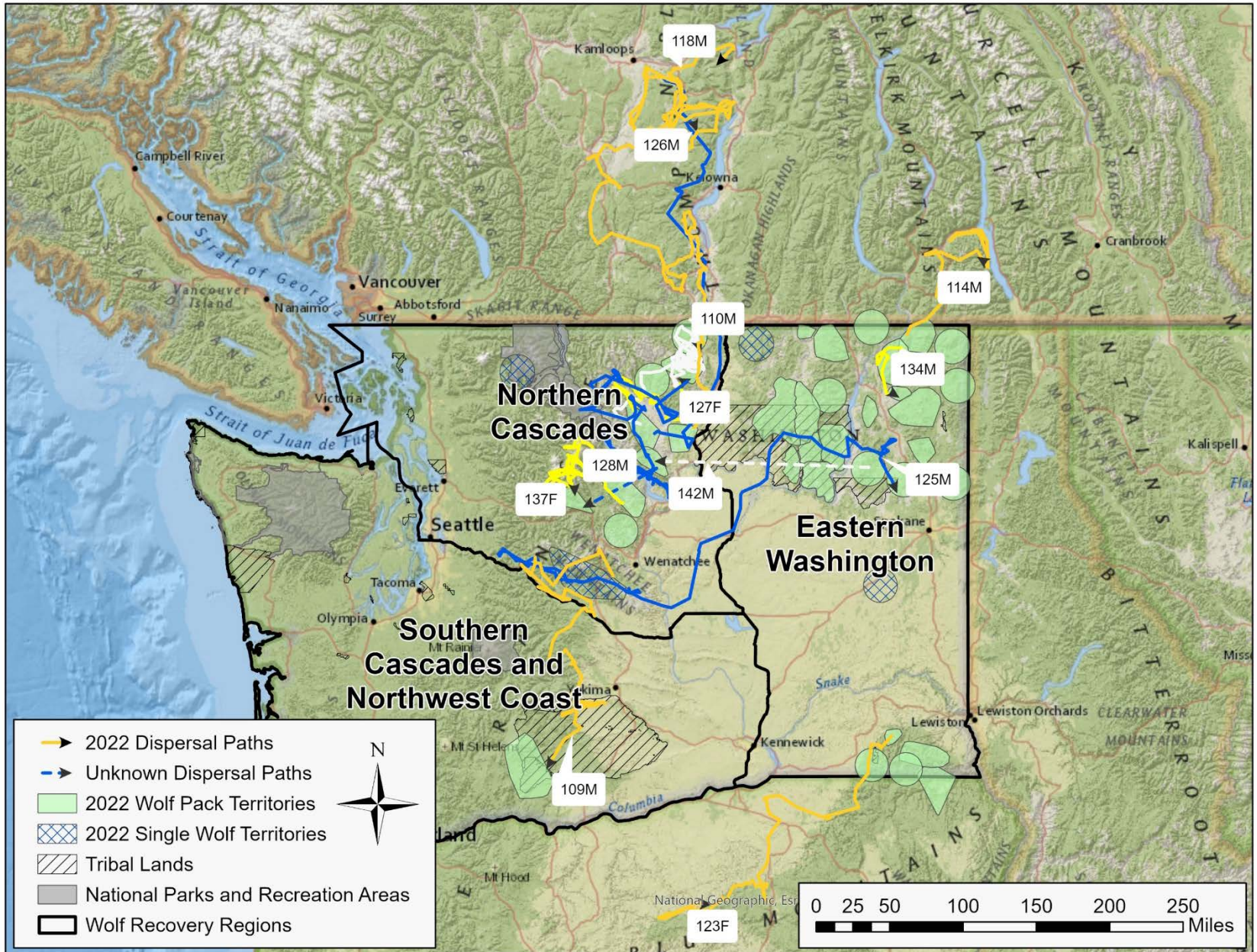
# 2022 Known Wolf Mortalities

Cause	Legal Tribal Harvest	Agency Removal	Caught in the Act	Unlawful Take (under investigation)	Natural	Unknown	Total
# of Mortalities in 2022	11	6	3	9	7	1	37



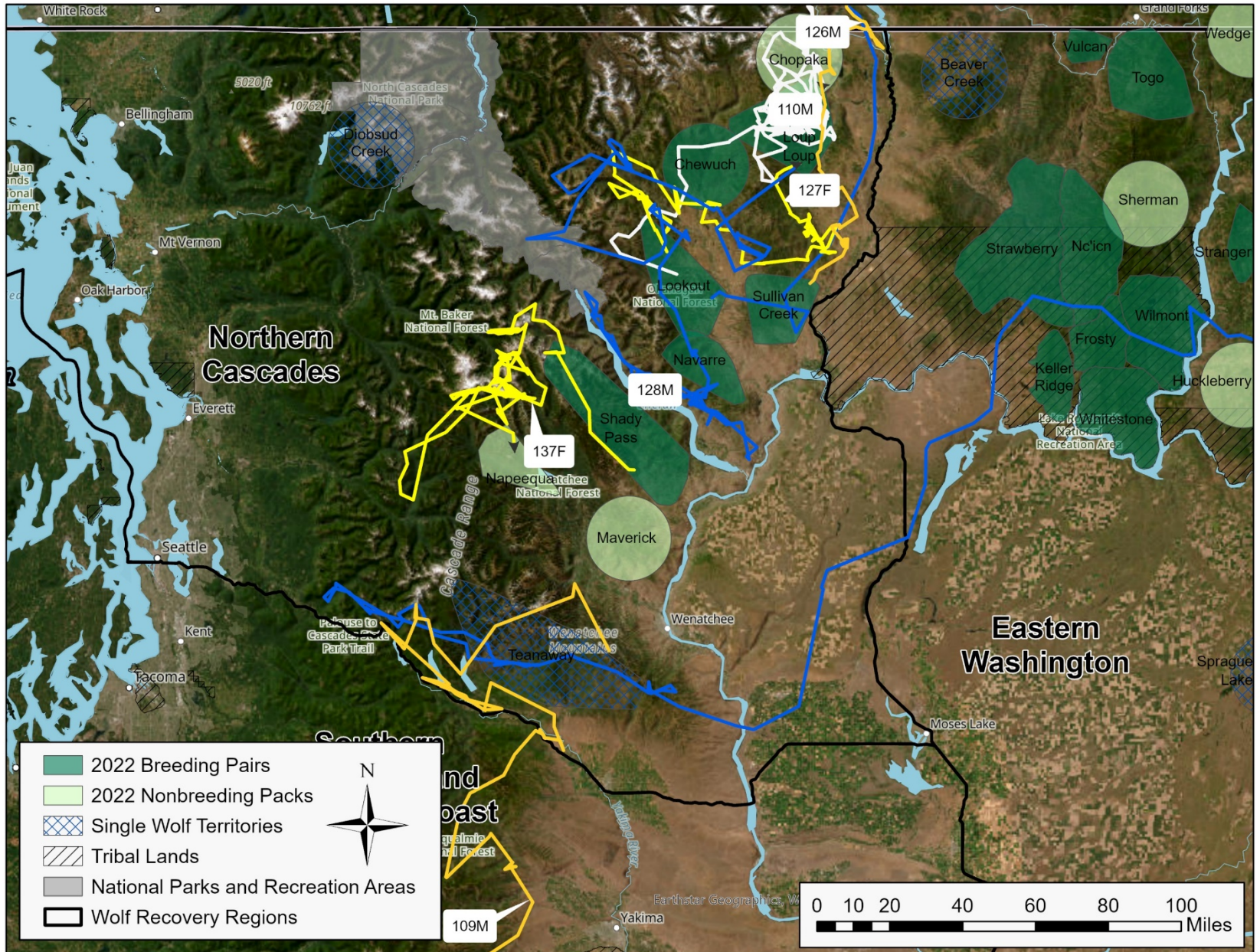


# 2022 Known Wolf Dispersals

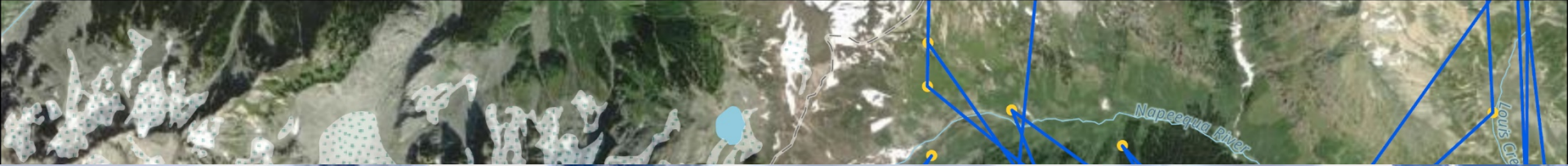




# Wolf Dispersal









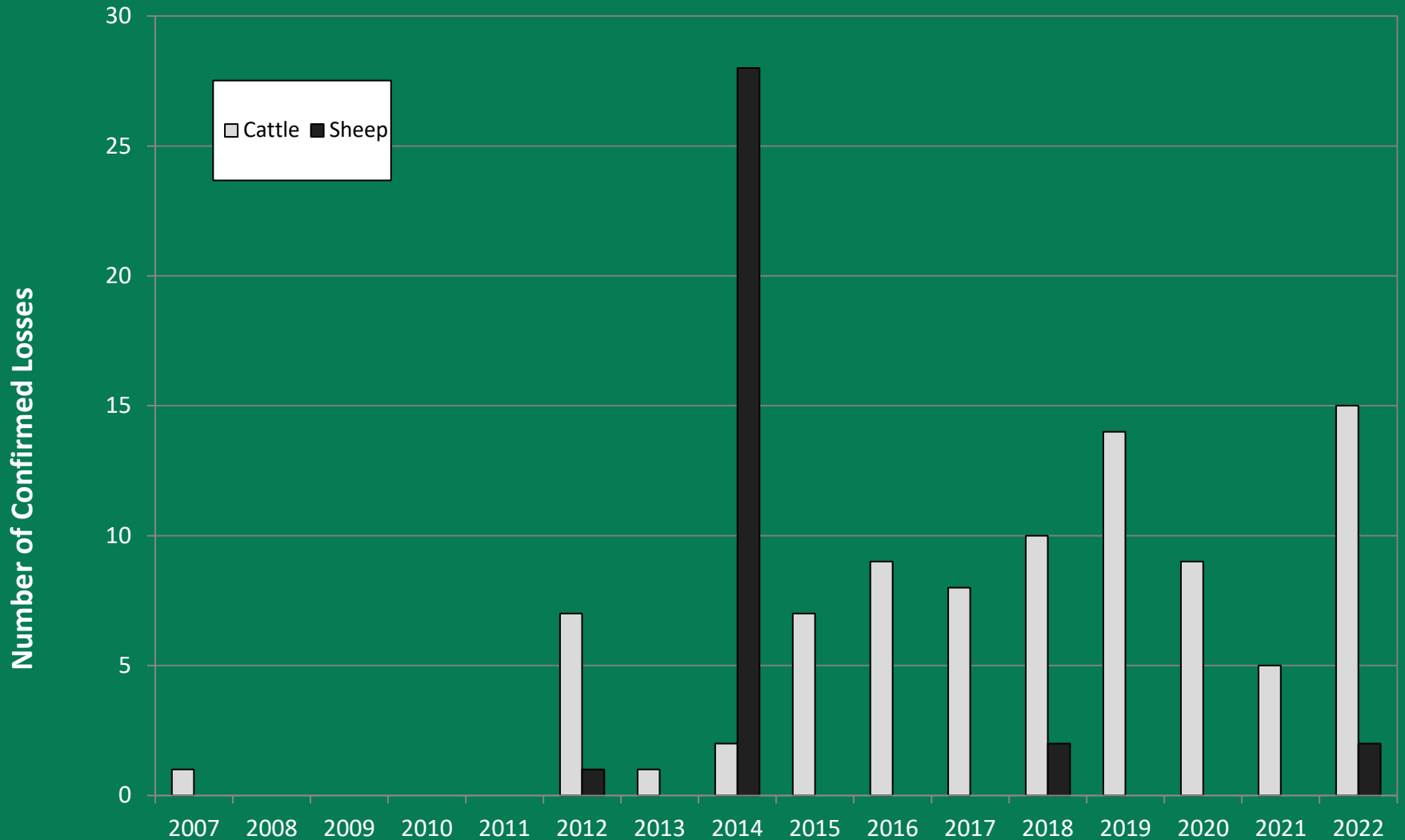


# Wolf – Livestock Interactions

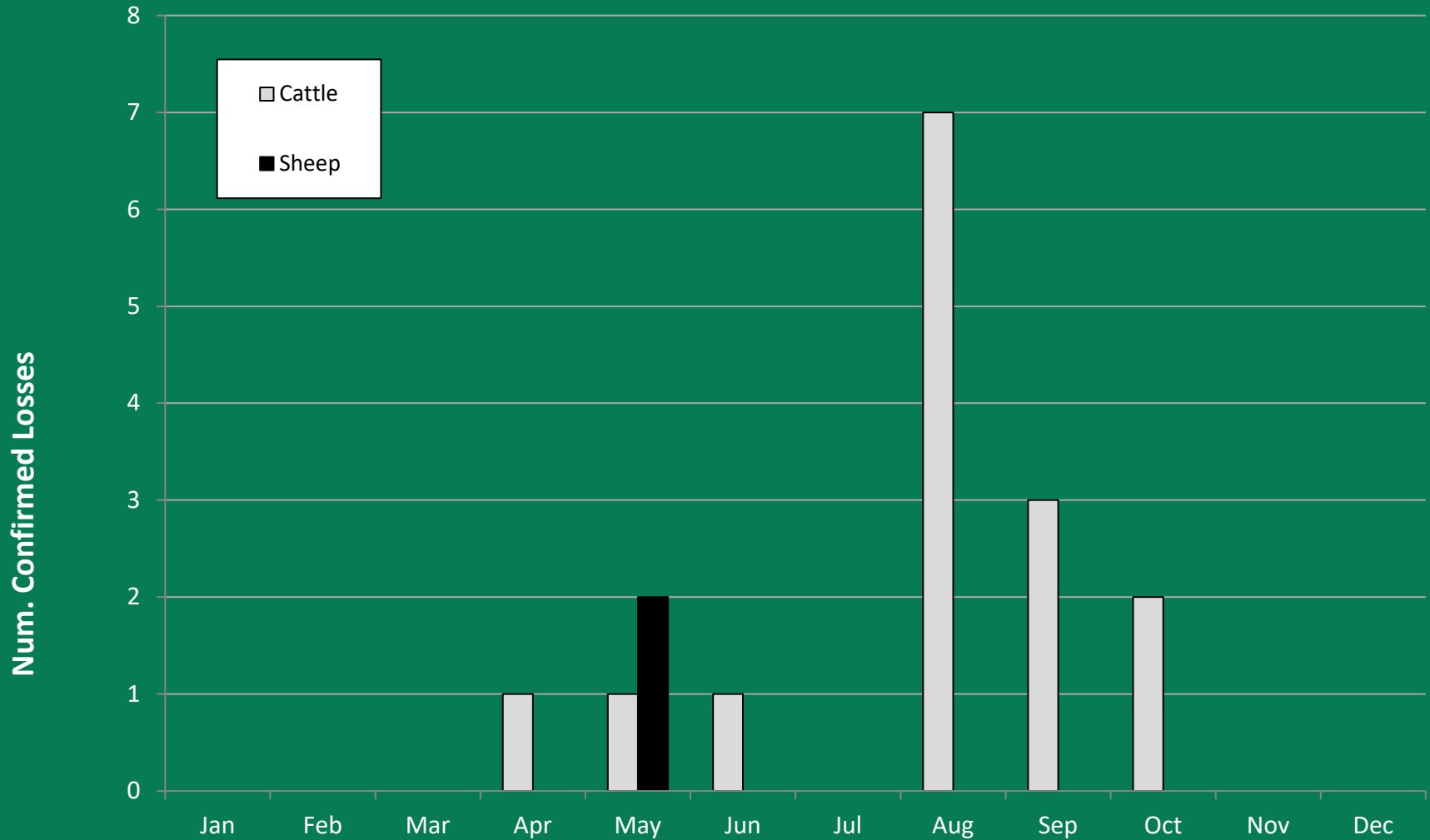
YEAR	Minimum Count	# of Packs	# of SBP	Annual Growth Rate	Known Mortality	Depredating Packs (%)
2008	5	1	1	--	0	0%
2009	14	2	2	--	0	0%
2010	19	3	1	36%	2	0%
2011	35	7	5	84%	0	0%
2012	51	9	5	46%	9	33%
2013	52	13	5	2%	5	8%
2014	68	16	5	31%	10	13%
2015	90	18	8	32%	7	22%
2016	115	20	10	28%	14	20%
2017	122	22	14	6%	14	23%
2018	126	27	15	3%	12	19%
2019	145*	26	10*	14%	21	14%
2020	178*	29	16*	24%	16	24%
2021	206	33	19	16%	30	18%
<b>2022</b>	<b>216</b>	<b>37</b>	<b>26</b>	<b>5%</b>	<b>37</b>	<b>19%</b>
<b>Ave</b>				<b>23%</b>		<b>14%</b> <small>16</small>



# Confirmed Wolf – Caused Livestock Mortality by Year



# 2022 Confirmed Wolf – Caused Livestock by Month



# Wolf Management Expenditures

(Jan 1, 2022 – Dec 31, 2022)

Allocation	Use	Cost
Damage Prevention Cooperative Agreements – Livestock (DPCAL's)	26 Livestock Producers	\$56,788
Contracted Range Riders	16 Range Riders	\$231,708
Livestock Losses (Indirect and Direct)	4 Livestock Producers	\$14,427
Lethal Removal Operations	Reducing Depredations on Livestock	\$119,541
Wolf Management	Management and Research Activities	\$1,210,105
<b>Total</b>		<b>\$1,632,569</b>



# Ongoing Research in Washington

**M. DeVivo & B. Kertson - WDFW - Predator/Prey Project**

**T. Ganz (UW)** - Ungulate – Predator Dynamics in Northern WA

**L. Satterfield (UW)** - Interactions between Wolves and Cougars in Eastern Washington State

**L. Prugh (UW)** – Linking seasonal snow processes to wildlife population dynamics

**S. Bassing (UW)** - Spatial and temporal patterns of predator-prey interactions in a large mammal community in eastern Washington

**T. Roussin (UW)** – Methods for Long-term Monitoring of Wolves

**B. Sullender (UW)** - Linking seasonal snow processes to wildlife population dynamics

**S. Gilbert (UI)** – Wildlife and Humans in Shared Landscapes

**R. Nickerson (USU)** - Researching the effectiveness of Range Riding to prevent depredations on livestock

**B. Nickerson (Swinomish Indian Tribal Community)** - Life on the Edge: Large Mammal Populations on a Wolf Recolonization Frontier

**S. Wasser (UW)** - Monitoring Impacts of Wolf Recovery on Medium to Large Carnivores and Their Prey in Washington State

**WA Dept of Transportation** - Coast to Cascades Habitat Connectivity Analysis for a Reestablishing Gray Wolf Population

**L. Petracca (UW)** - Assessing effects of management strategies and system uncertainty on population dynamics of the gray wolf (*Canis lupus*) in Washington State, USA.

**L. Petracca (UW)** - Merging integrated population models and individual-based models to project population dynamics of recolonizing species.



# Questions?

