

Land Transactions

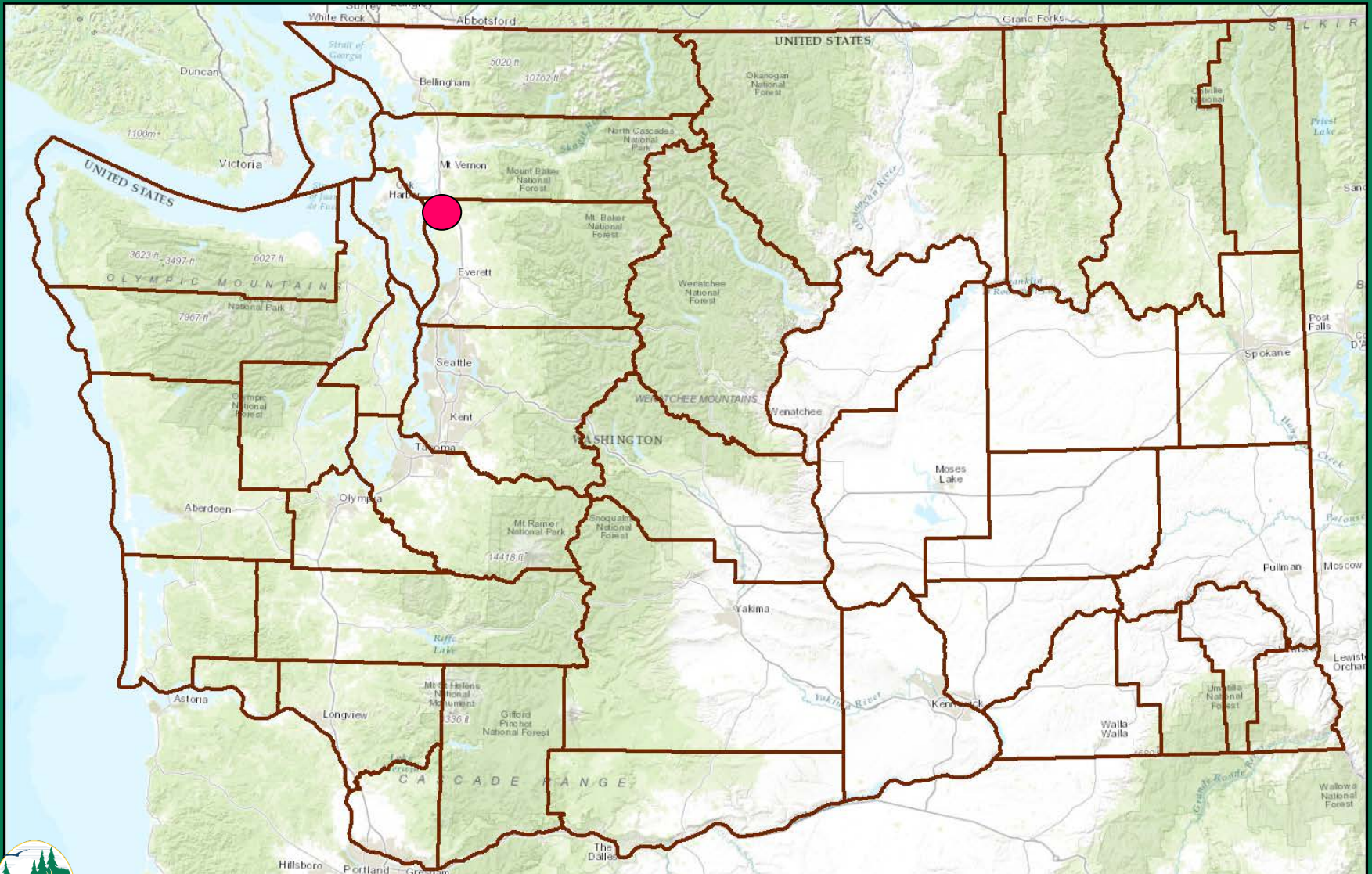
April 7, 2023

Commission Meeting

Karen Edwards
Real Estate Manager, Wildlife Program

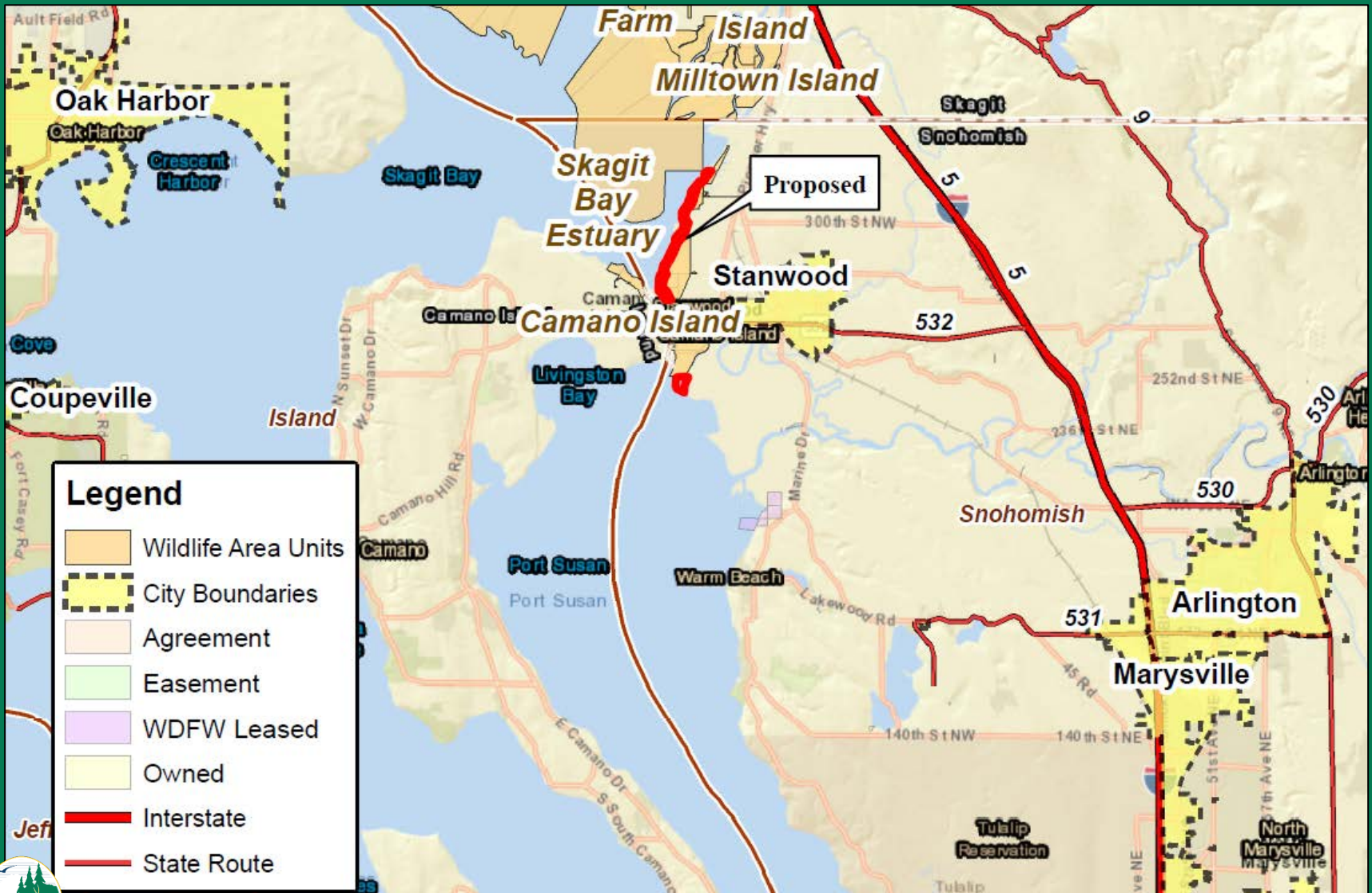


Proposed Donation, Snohomish County Sportsmen's Association 166 (+/-) Acres – Snohomish County, Skagit Bay Estuary & Leque Units, Skagit WLA, Region 4

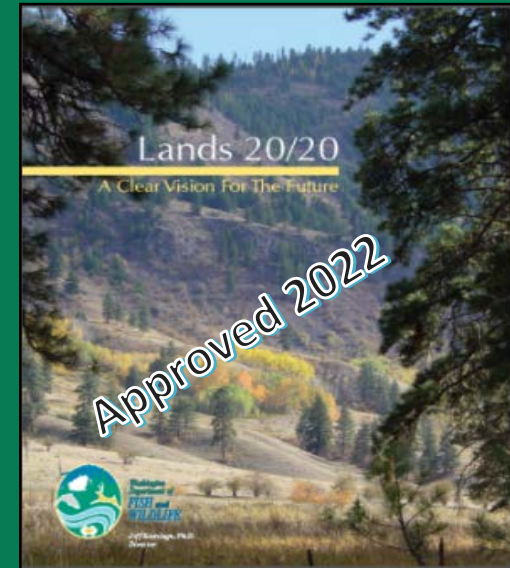
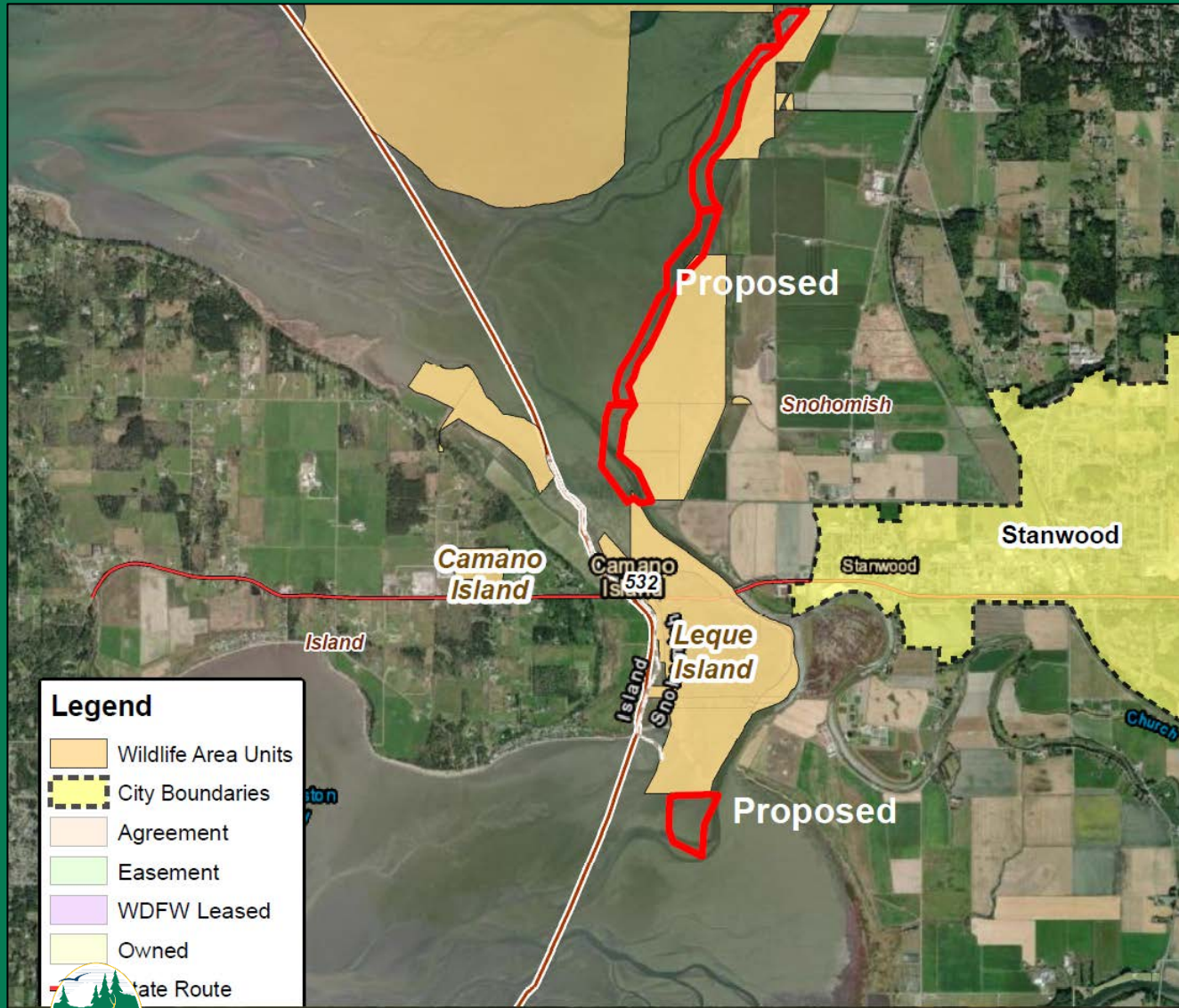


Proposed Donation, Snohomish County Sportsmen's Association

166 (+/-) Acres – Snohomish County, Skagit Bay Estuary & Leque Units, Skagit WLA, Region 4



Proposed Donation, Snohomish County Sportsmen's Association 166 (+/-) Acres – Snohomish County, Skagit Bay Estuary & Leque Units, Skagit WLA, Region 4



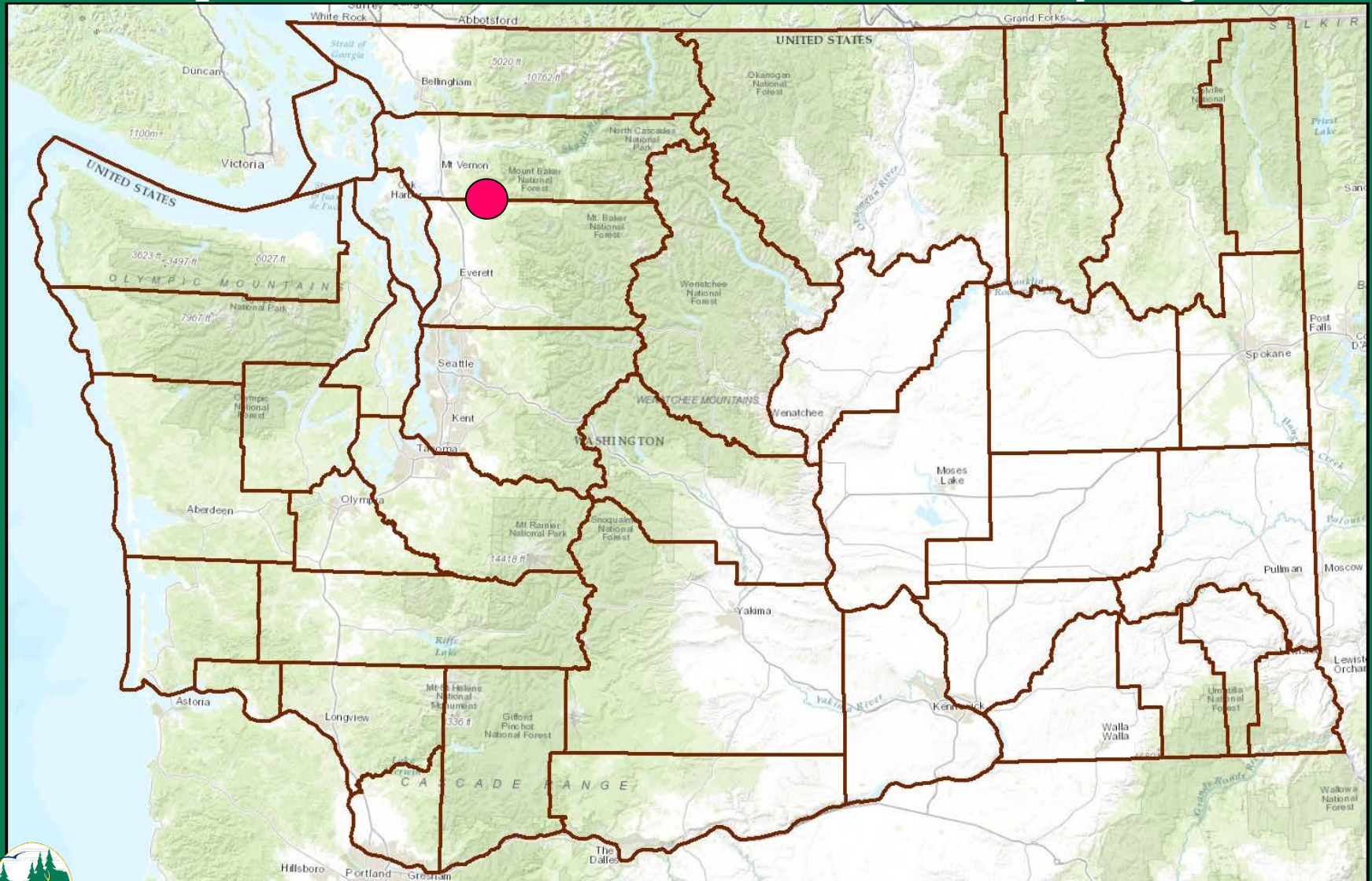
Proposed Donation, Snohomish County Sportsmen's Association 166 (+/-) Acres – Snohomish County, Skagit Bay Estuary & Leque Units, Skagit WLA, Region 4



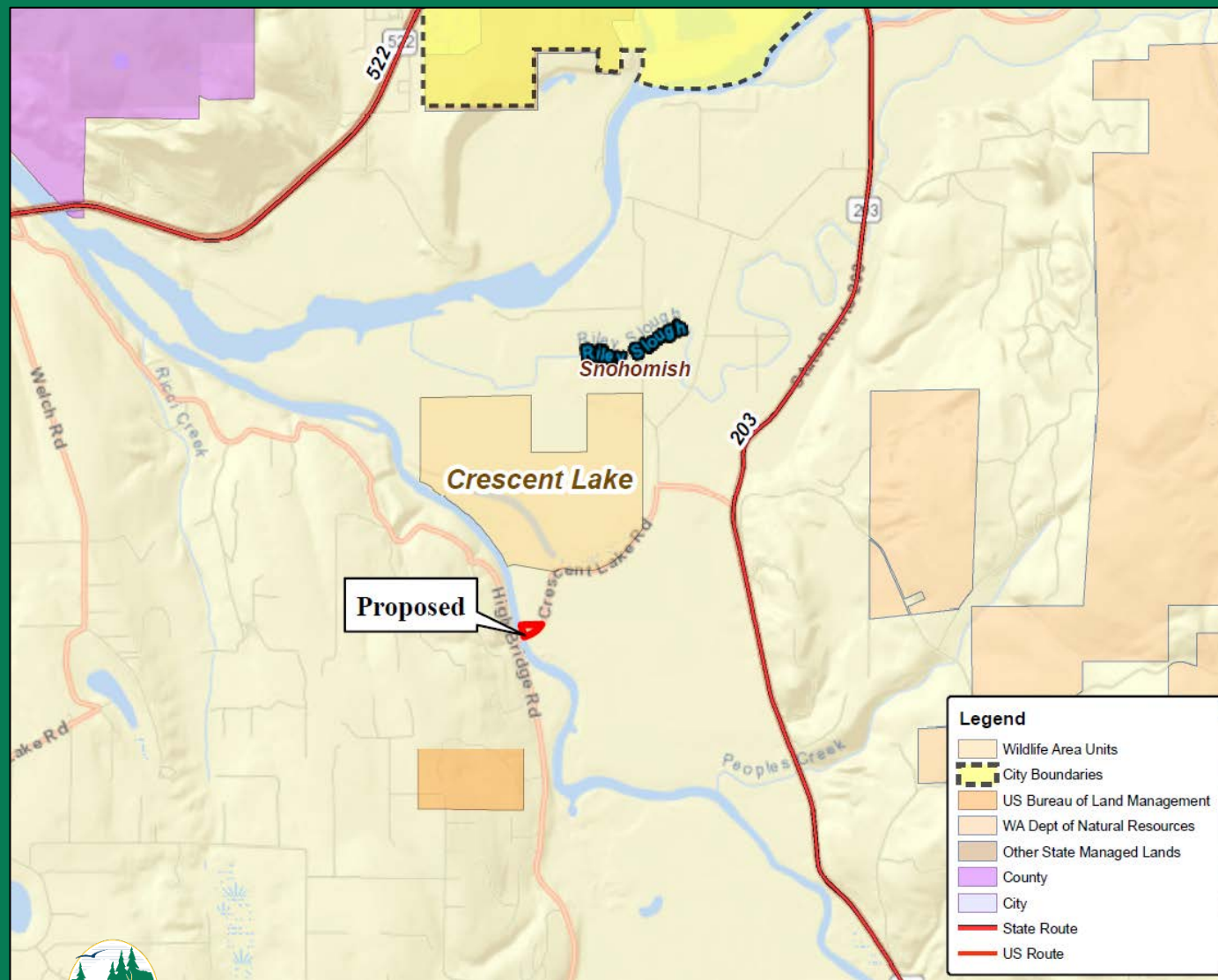
Proposed Donation, Snohomish County Sportsmen's Association
166 (+/-) Acres – Snohomish County,
Skagit Bay Estuary & Leque Units, Skagit WLA, Region 4

Questions?

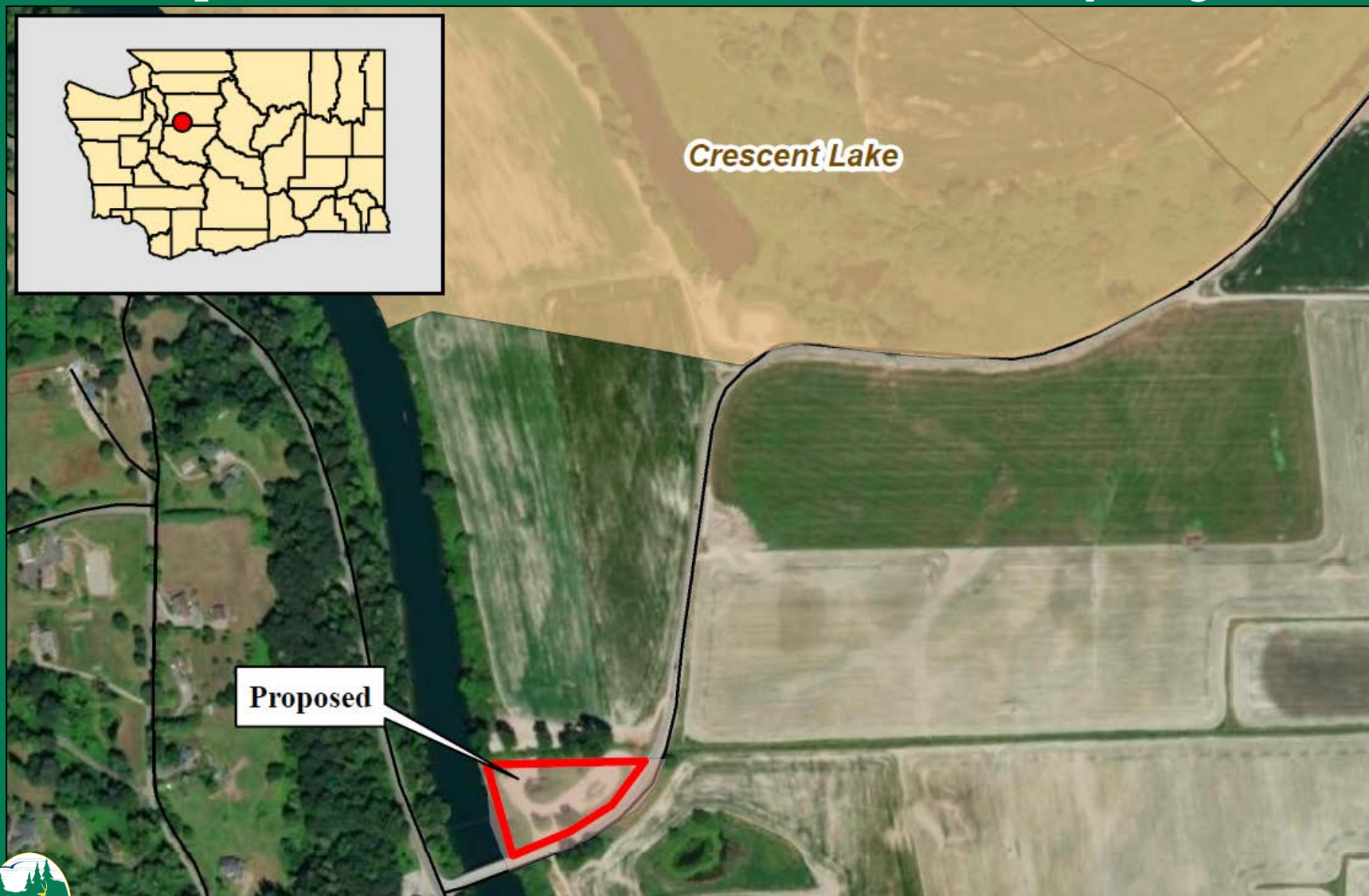
Proposed Agency to Agency Transfer & Grant of Easements, High Bridge Water Access, 2 (+/-) Acres Crescent Lake Unit, Snoqualmie Wildlife Area, Snohomish County, Region 4



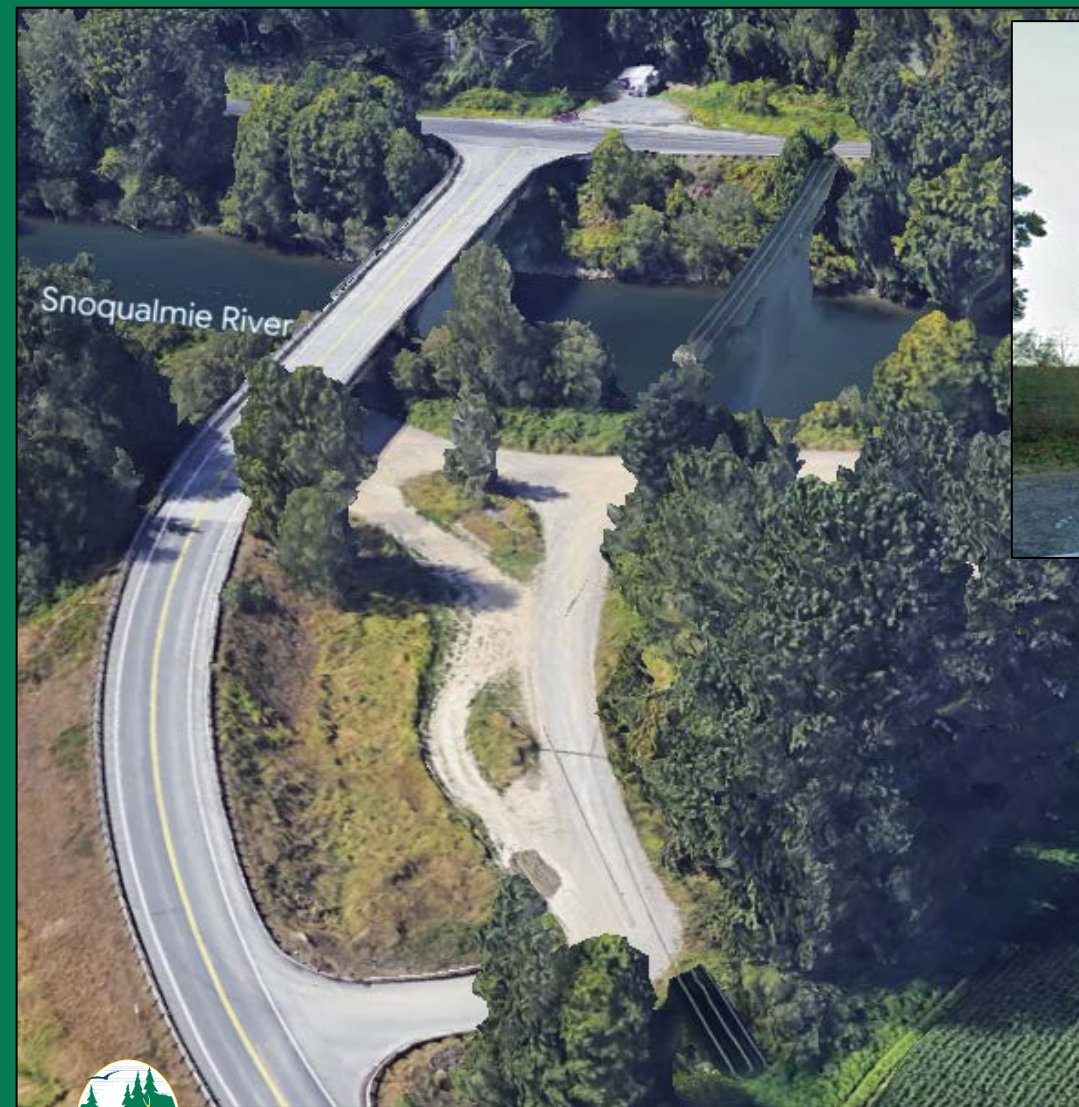
Proposed Agency to Agency Transfer & Grant of Easement, High Bridge Water Access, 2 (+/-) Acres Crescent Lake Unit, Snoqualmie Wildlife Area, Snohomish County, Region 4



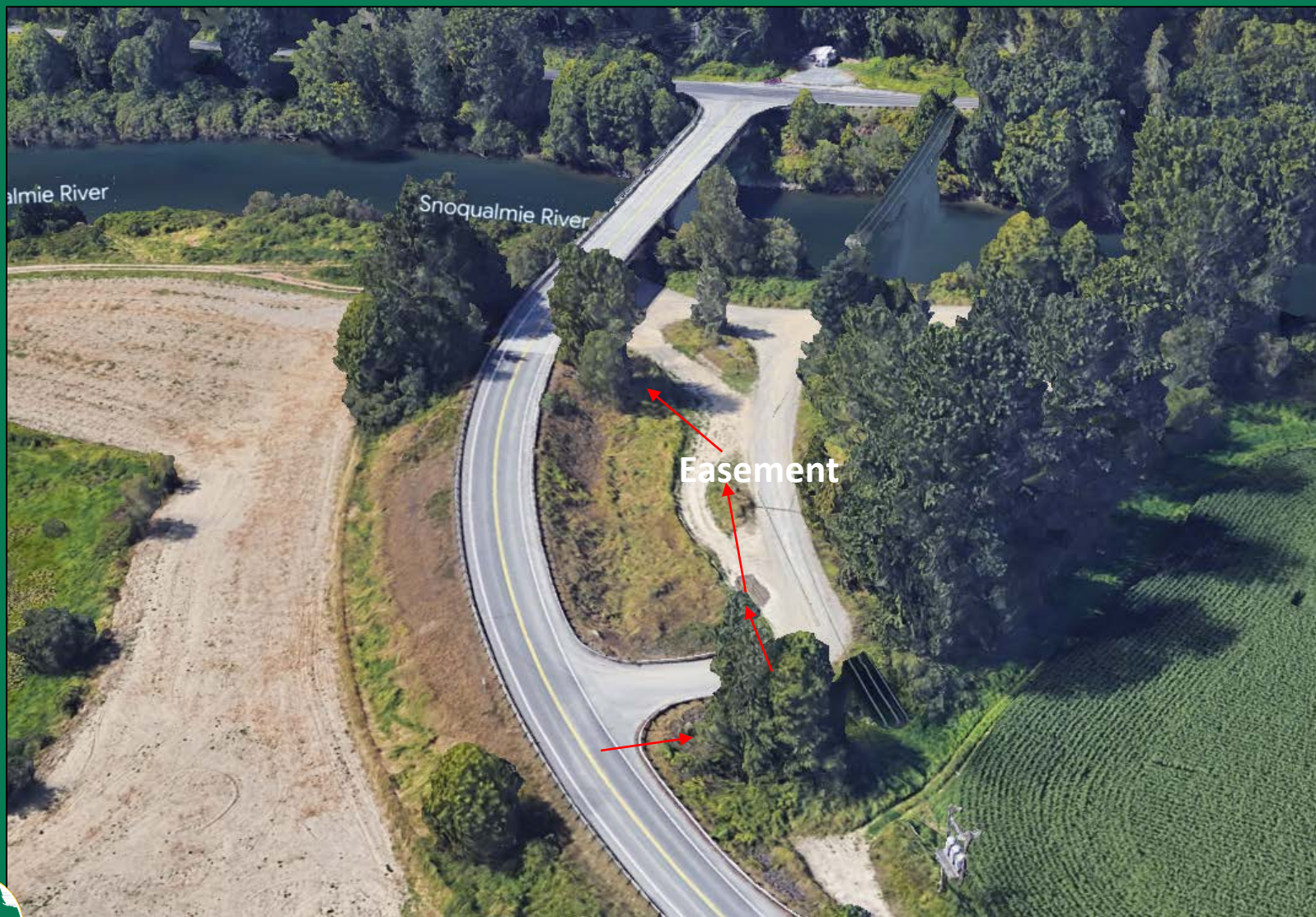
Proposed Agency to Agency Transfer & Grant of Easement, High Bridge Water Access, 2 (+/-) Acres Crescent Lake Unit, Snoqualmie Wildlife Area, Snohomish County, Region 4



Proposed Agency to Agency Transfer & Grant of Easement, High Bridge Water Access, 2 (+/-) Acres Crescent Lake Unit, Snoqualmie Wildlife Area, Snohomish County, Region 4



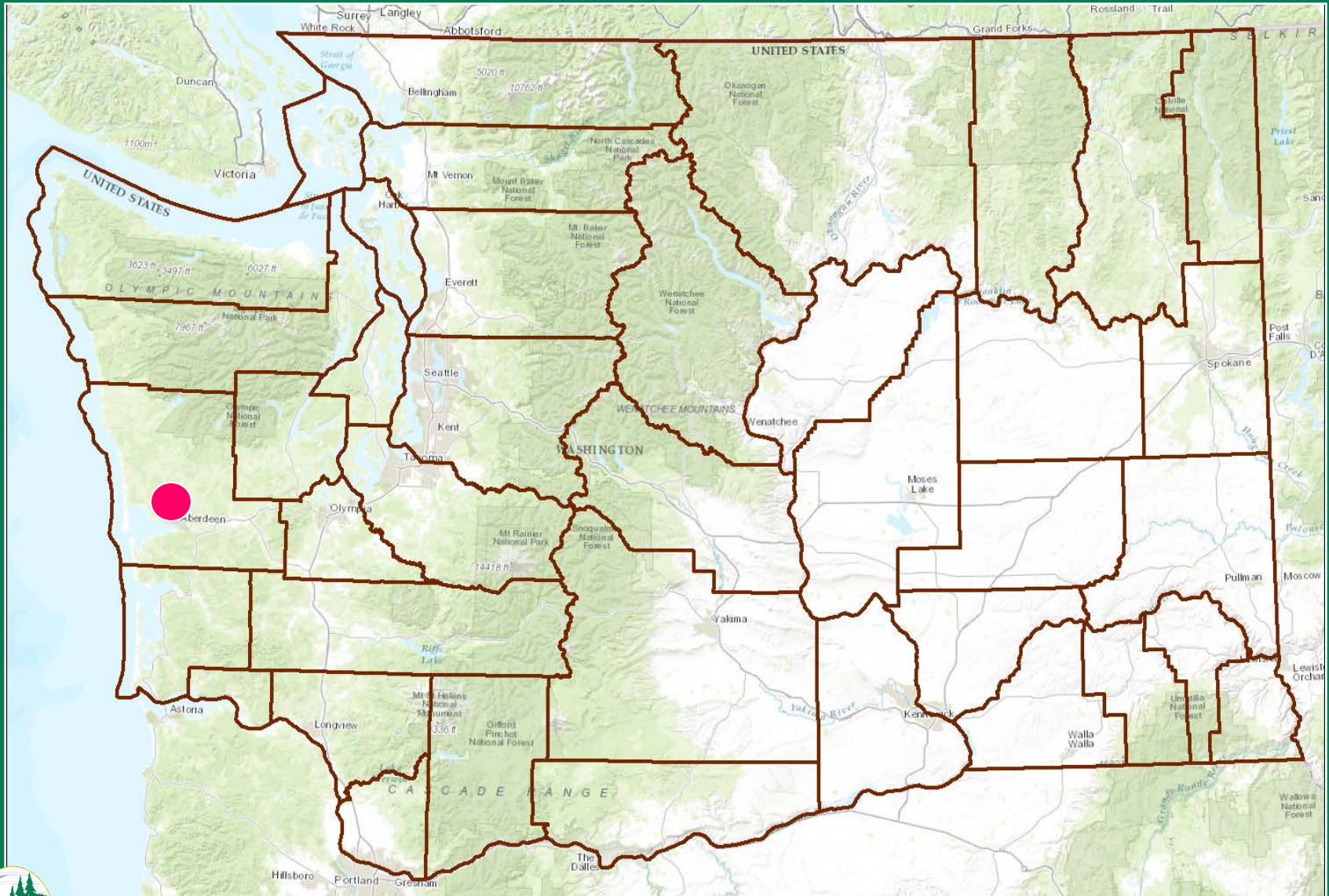
Proposed Agency to Agency Transfer & Grant of Easement, High Bridge Water Access, 2 (+/-) Acres Crescent Lake Unit, Snoqualmie Wildlife Area, Snohomish County, Region 4



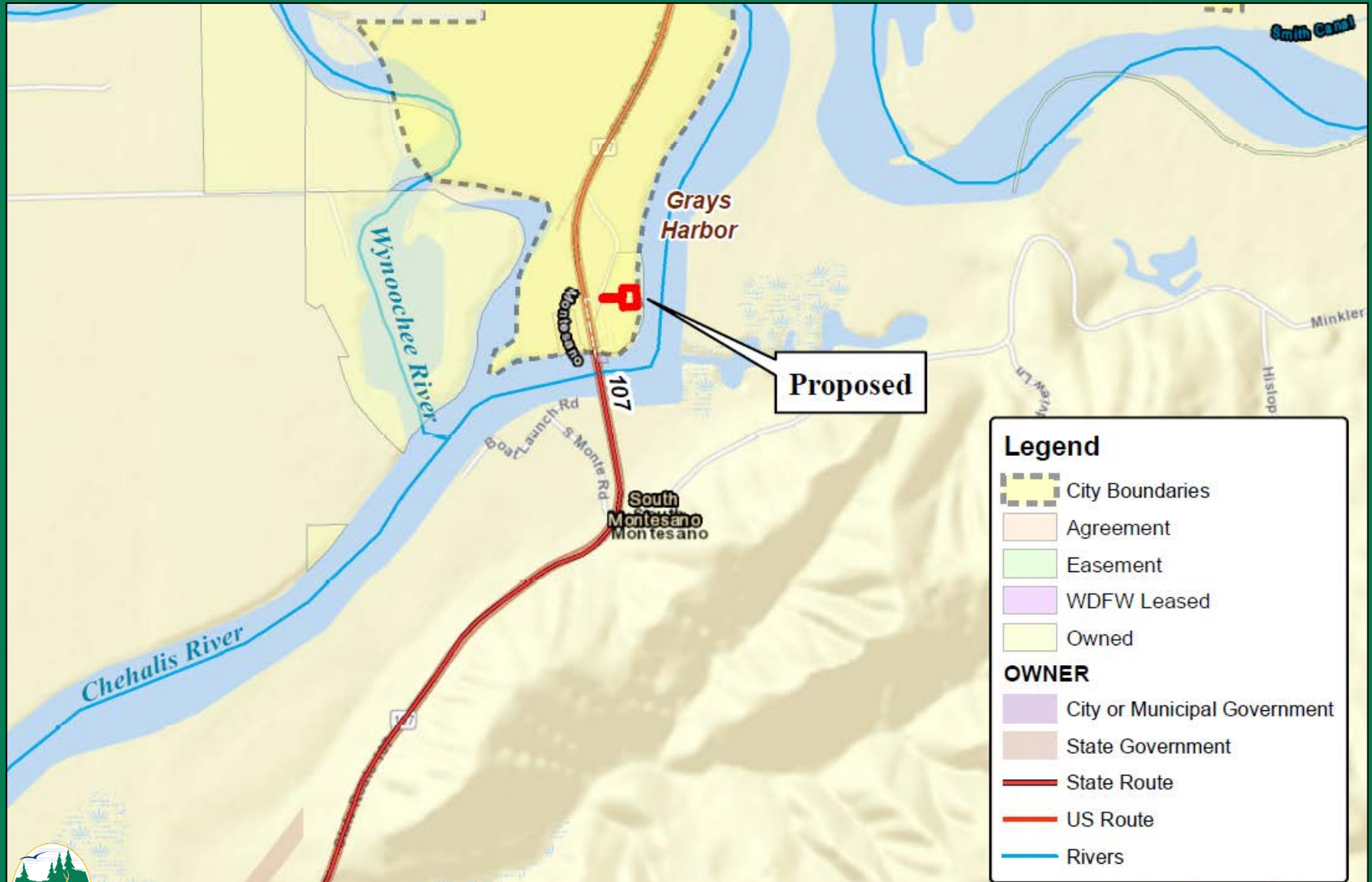
**Proposed Agency to Agency Transfer & Grant of Easements,
High Bridge Water Access 2, (+/-) Acres Crescent Lake Unit,
Snoqualmie Wildlife Area, Snohomish County, Region 4**

Questions?

Proposed Donation of .45(+/-) Acres in Grays Harbor County South Montesano Water Access, Region 6



Proposed Donation of .45(+/-) Acres in Grays Harbor County South Montesano Water Access, Region 6



Proposed Donation of .45(+/-) Acres in Grays Harbor County South Montesano Water Access, Region 6



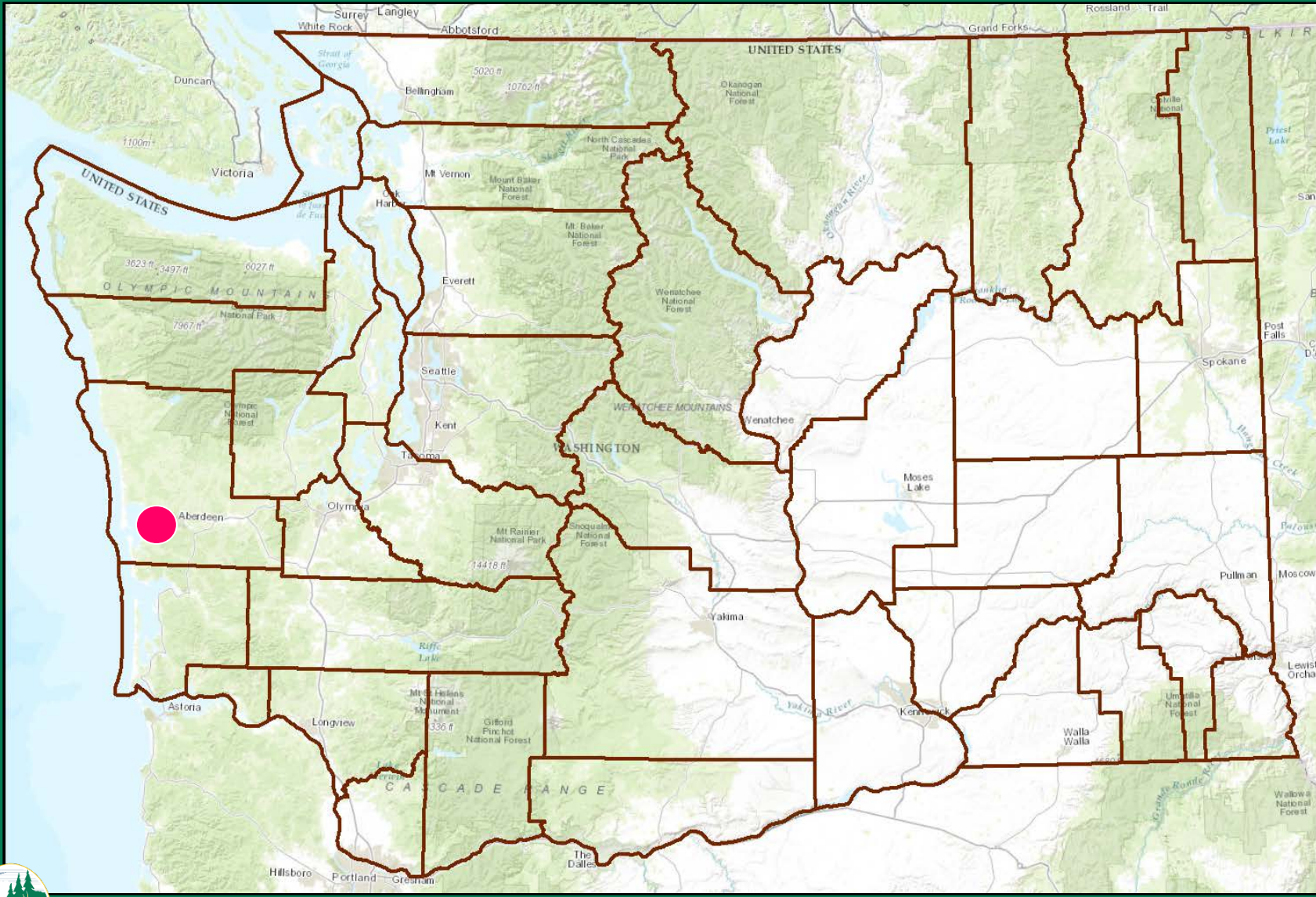
Proposed Donation of .45(+/-) Acres in Grays Harbor County South Montesano Water Access, Region 6



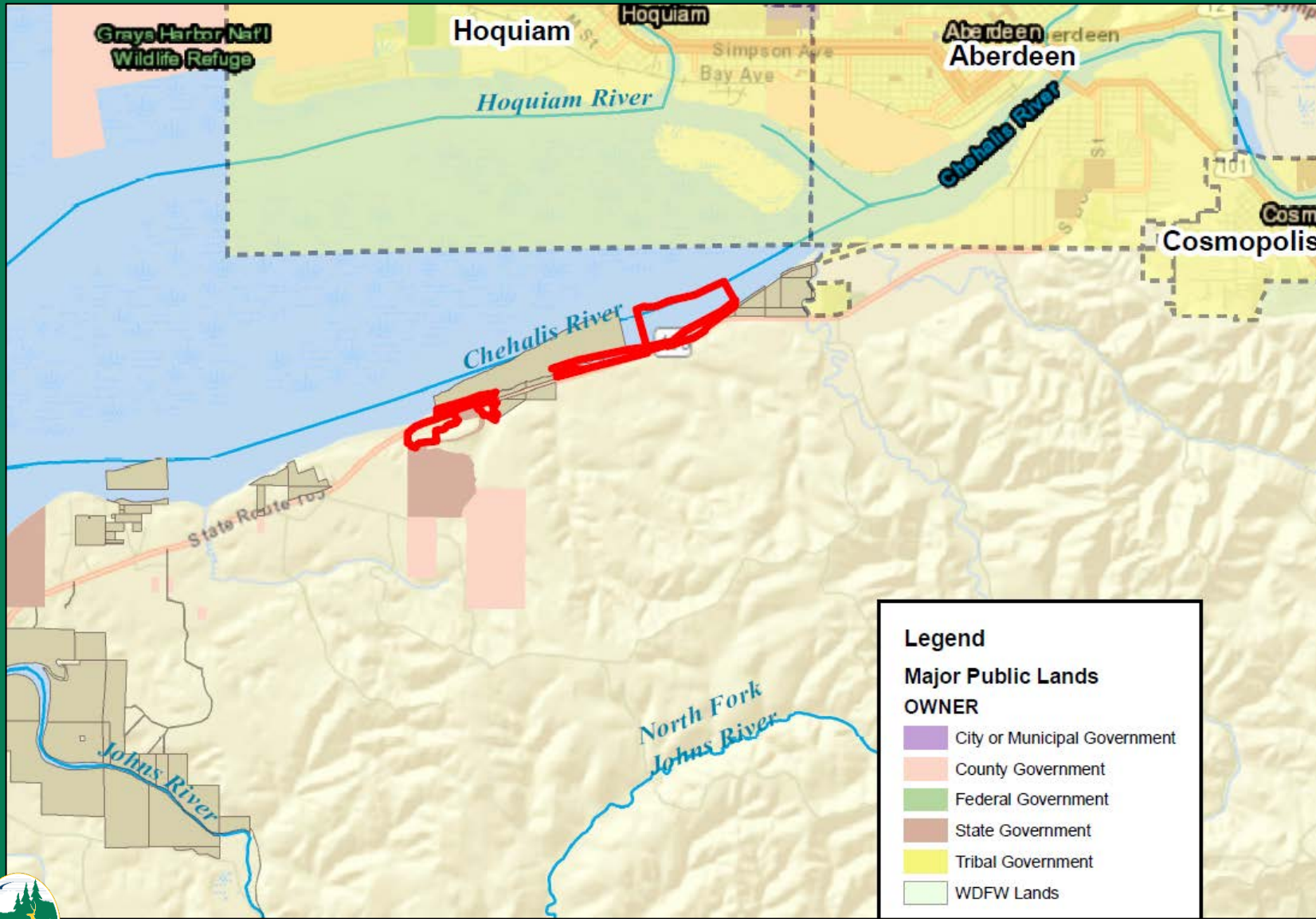
Proposed Donation of .45(+/-) Acres in Grays Harbor County
South Montesano Water Access, Region 6

Questions?

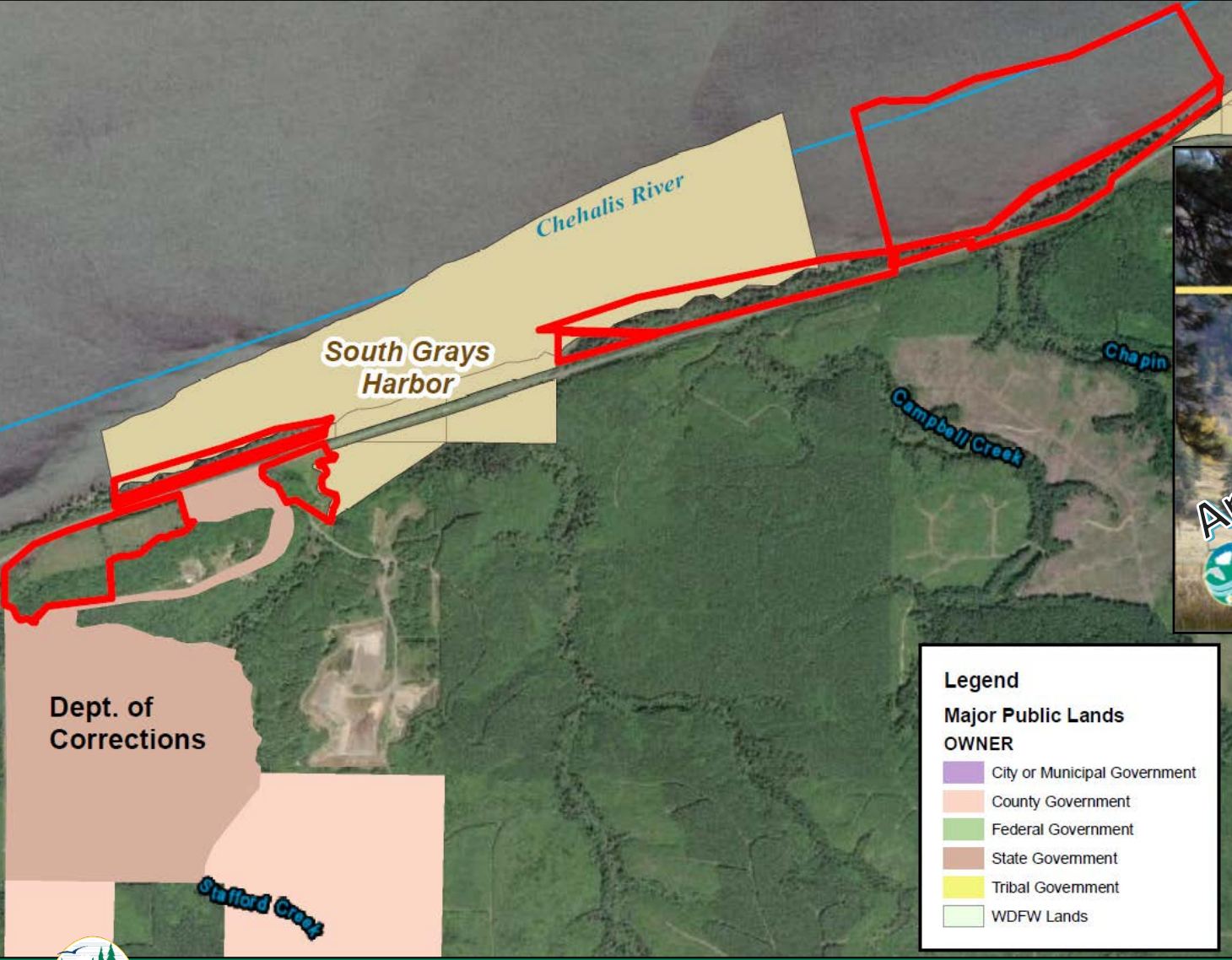
Proposed Donation of 291 (+/-) Acres in Grays Harbor County Stafford/Three Creeks, South Grays Harbor Unit, Johns River WLA, Region 6



Proposed Donation of 291 (+/-) Acres in Grays Harbor County Stafford/Three Creeks, South Grays Harbor Unit, Johns River WLA, Region 6



Proposed Donation of 291 (+/-) Acres in Grays Harbor County Stafford/Three Creeks, South Grays Harbor Unit, Johns River WLA, Region 6



FORTERRA
FOR THE PEOPLE. FOR THE LAND. FOREVER.



Proposed Donation of 291 (+/-) Acres in Grays Harbor County Stafford/Three Creeks, South Grays Harbor Unit, Johns River WLA, Region 6

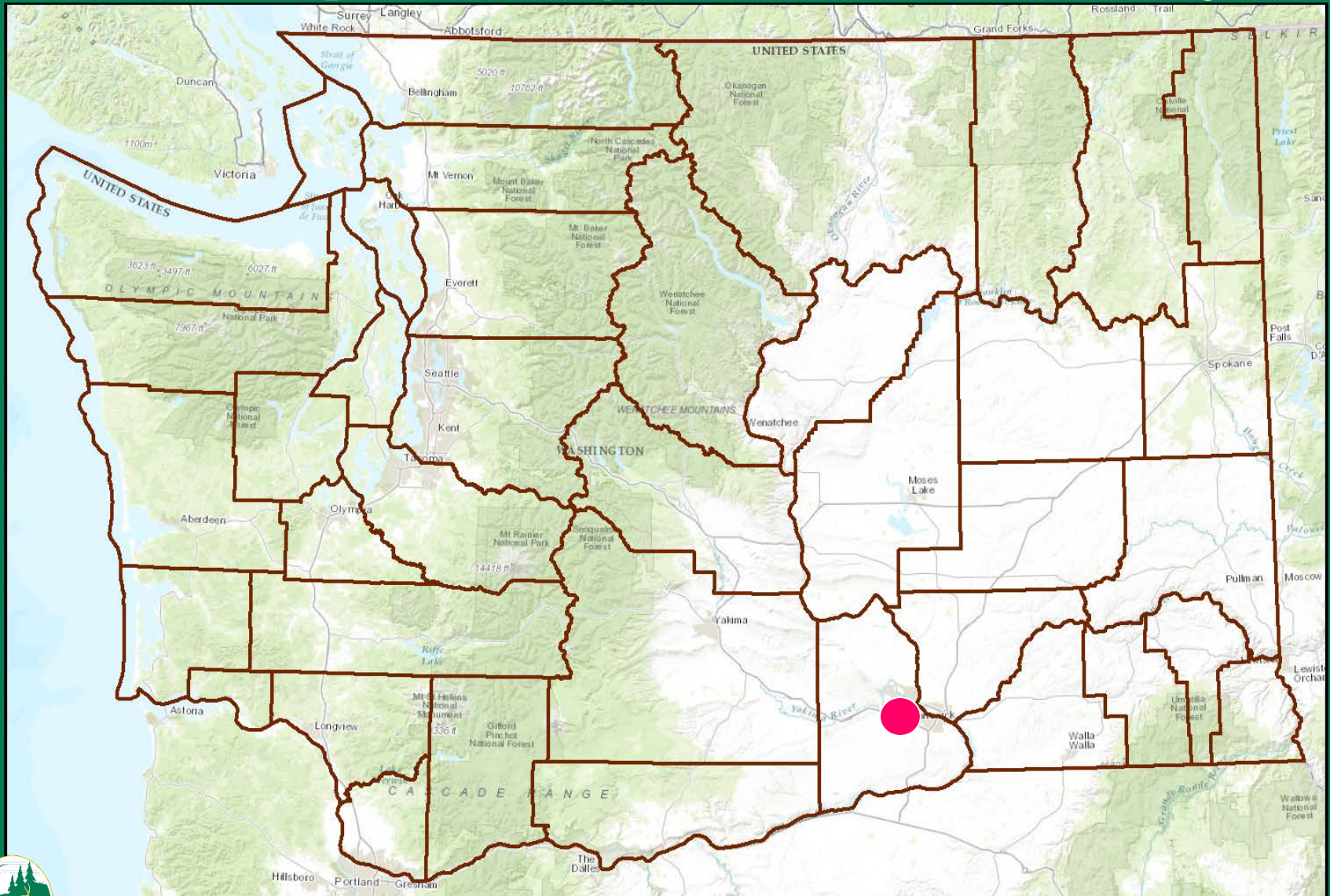


Proposed Donation of 291 (+/-) Acres in Grays Harbor County Stafford/Three Creeks, South Grays Harbor Unit, Johns River WLA, Region 6

Questions?



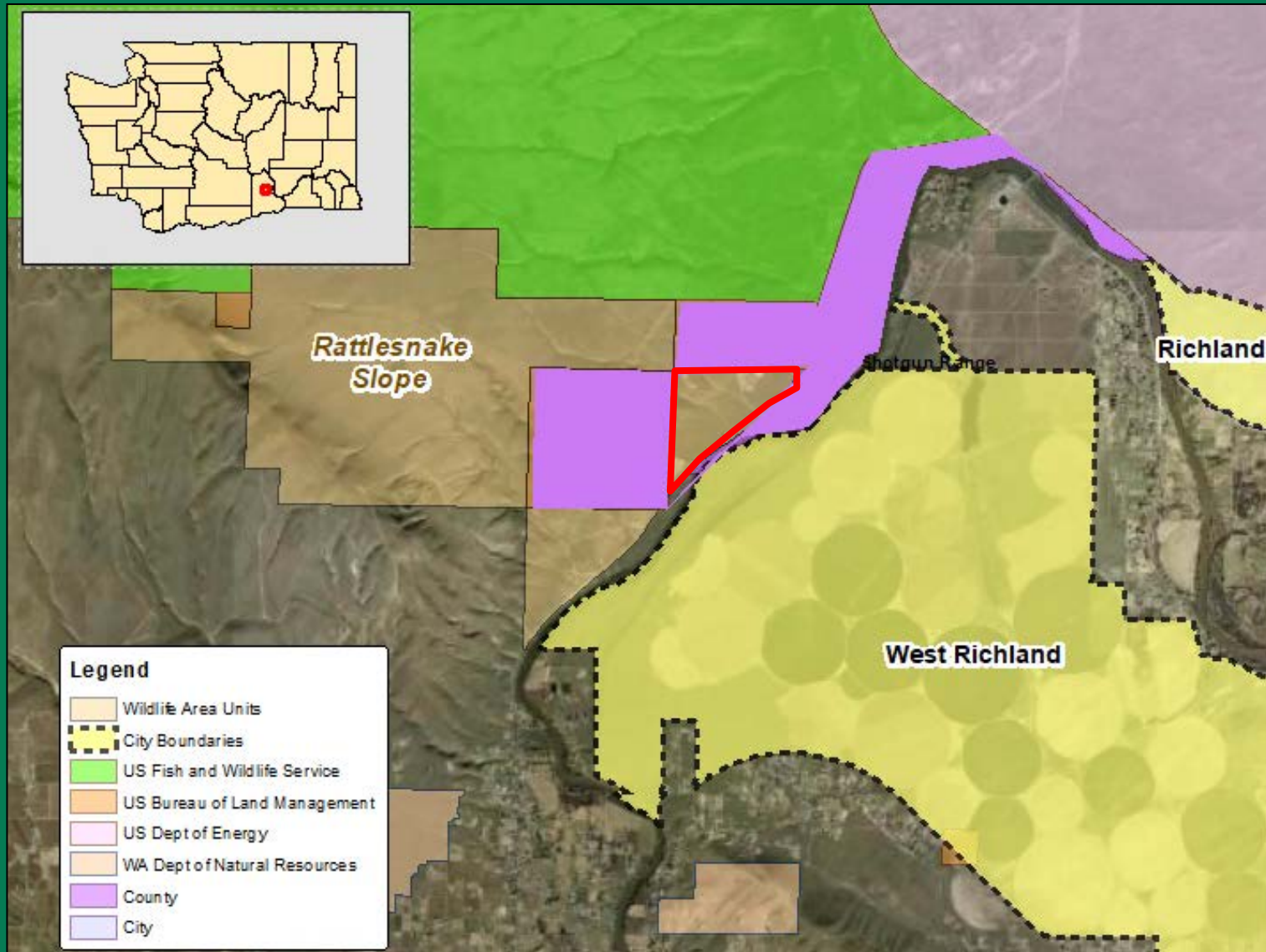
Proposed Extension Land Use Agreement, Rattlesnake Mtn. Shooting Facility, Benton County Rattlesnake Slope Unit, Sunnyside – Snake River WLA, Region 3



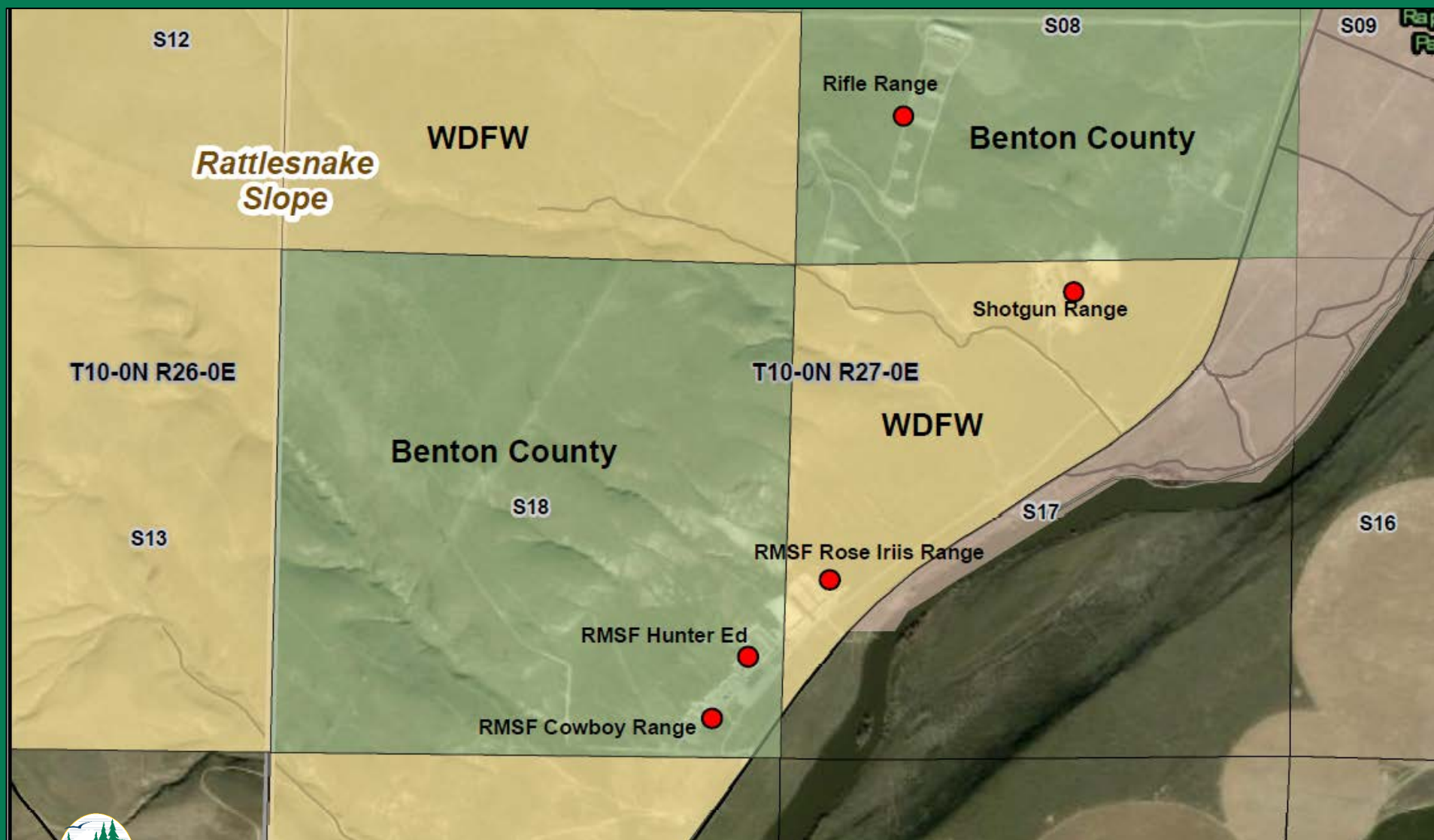
Extension Land Use Agreement, Rattlesnake Mtn.

Shooting Facility, Benton County

Rattlesnake Slope Unit, Sunnyside – Snake River WLA, Region 3



Extension Land Use Agreement, Rattlesnake Mtn. Shooting Facility, Benton County Rattlesnake Slope Unit, Sunnyside – Snake River WLA, Region 3



Extension Land Use Agreement, Rattlesnake Mtn. Shooting Facility, Benton County Rattlesnake Slope Unit, Sunnyside – Snake River WLA, Region 3



Extension Land Use Agreement, Rattlesnake Mtn.

Shooting Facility, Benton County

Rattlesnake Slope Unit, Sunnyside – Snake River WLA, Region 3



Questions?