

Elk Management in Skagit and Whatcom Counties

**Brendan
Brokes**

Region 4 Regional
Director

**Fenner
Yarborough**

Region 4 Wildlife
Program Manager



Washington
Department of
**FISH and
WILDLIFE**

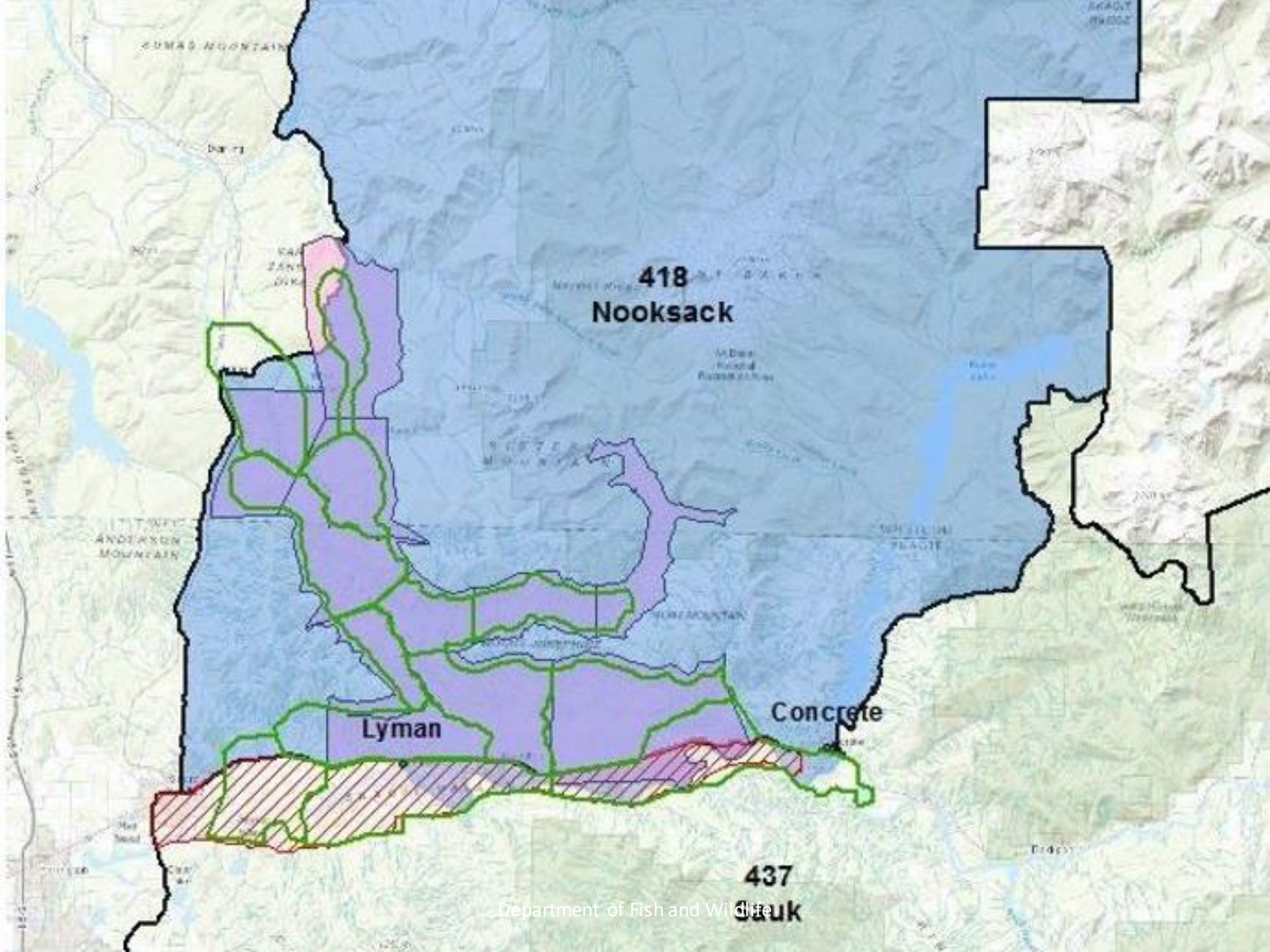


North Cascades Elk Herd

- Smallest of the 10 managed elk herds in Washington
- Co-managed with Point Elliott Treaty Tribes
- Manage elk for a variety of recreational, educational, and aesthetic purposes including hunting, wildlife viewing, photography, scientific study, and cultural and ceremonial uses by Native Americans

Population estimate in survey area is around 1,500 elk





418
Nooksack

Lyman

Concrete

437
Clack

Population Objective

2018 NCEH Plan: 1,700 - 2,000 Elk

- Framework and tools for handling elk damage issues are the same whether herd is above or below objective
- Tools include fencing materials, hazing, landowner damage permits, recreational hunting, neighborhood management, seed and fertilizer program, damage compensation, etc.
- WDFW committed to helping landowners with damage issues regardless of elk herd size
- Hunting season and permit levels are adjusted annually with our Tribal Co-managers based on herd size and distribution

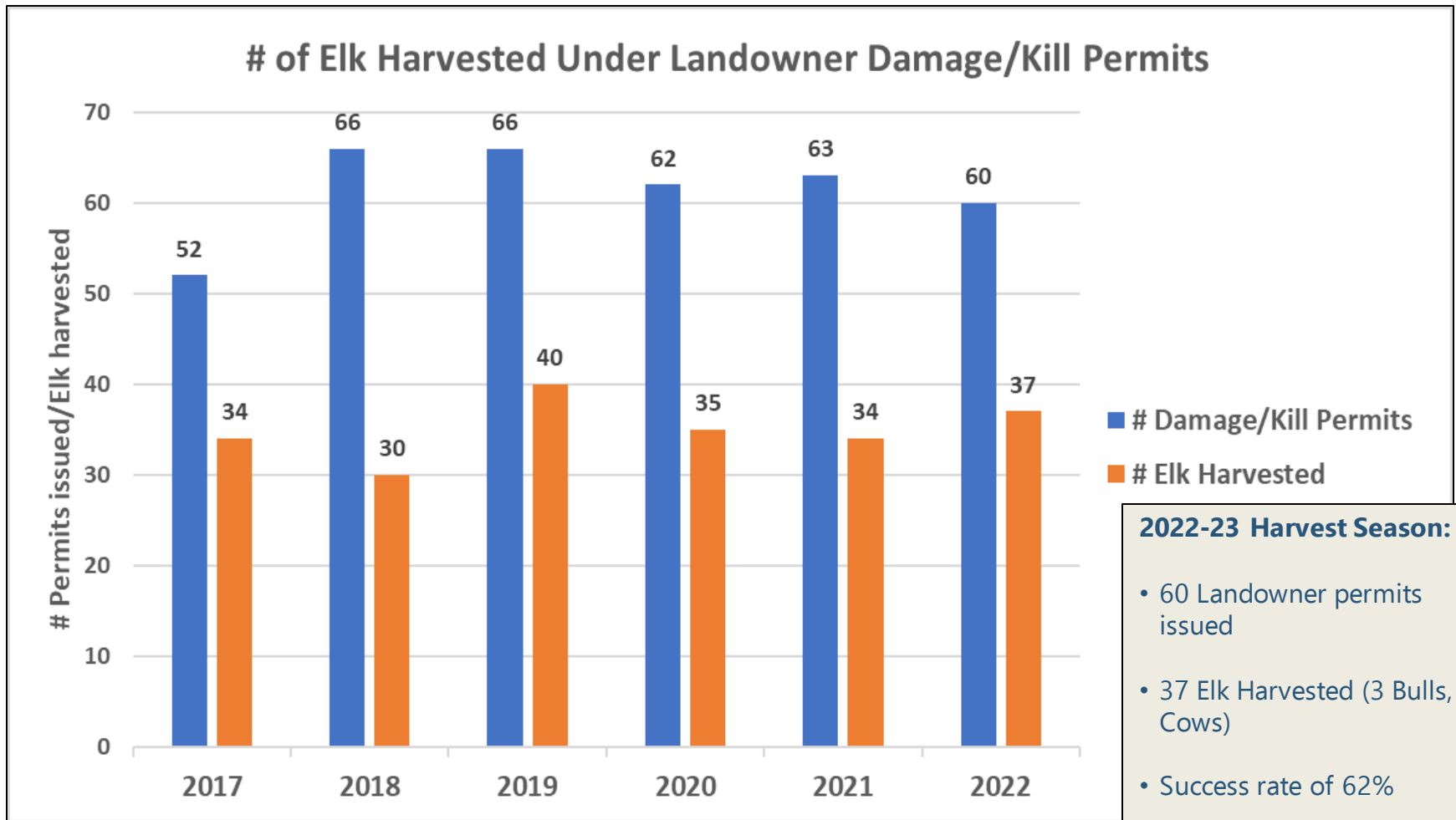


Recreational Hunting

- GMUs 418 and 437 are Special Permit only:
 - 418: 29 bull permits
 - 437: 21 bull, 28 cow permits*Includes archery, rifle, and muzzleloader*
- Hunting access to private property and public safety are a challenge
- GMUs 407 and 448 are General Season – elk numbers and harvest are low
- Long season (September 1 - January 19)



Landowner Damage and Kill Permits



Hoof Disease Removals

- Landowner Damage Permits – some directed to specifically target limping elk
- Targeted removals by WDFW
- Master Hunters – some directed to specifically target limping elk
- Elk Hoof Disease Incentive Program for Hunters
- Six limping elk removed during 2022-23 season



Fencing



- Fencing materials supplied when funds appropriated by legislature
- Over 100,000 linear feet (~19 miles) of fencing materials worth over \$750K provided (2015-2023)



Next steps



- Continue to co-manage with Point Elliott Treaty Tribes
- Conduct population surveys
- Continue to respond to elk issues on properties experiencing elk damage (fencing materials, hazing, damage permits, hunting, etc.)
- Continue to target limping elk and work with WSU on hoof disease research
- Continue to meet with local officials, concerned citizens, and agricultural representatives to discuss



