

Willapa Bay Policy Revisions

Marlene Wagner, Kelly Cunningham, Chad Herring, & Ken Warheit
Fish Committee Meeting
May 23, 2023



Meeting Outline

- Review Draft Policy Language
- Commissioner Questions
 - Escapement goals & performance measures
 - Hatchery production
 - Time and area restrictions
- Policy completion timeline: Staff recommendation





Commissioner Questions

What are MSEs and their relationship to escapement goals?

A Management Strategy Evaluation (MSE) will be used to:

- Evaluate current practices (current escapement goals) relative to alternative approaches
- Quantify risks and benefits of different management approaches
- Standardize science support to management across regions and species



Management Strategy Evaluation

Simulation approach to identify the 'best' strategy among a set of candidate strategies

- Evaluates the relative performance of alternative management strategies by modeling the long-term effects of different fishing scenarios and quantifies trade-offs among multiple potentially competing objectives

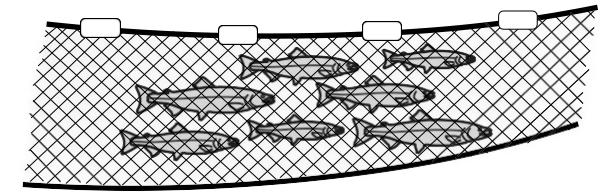
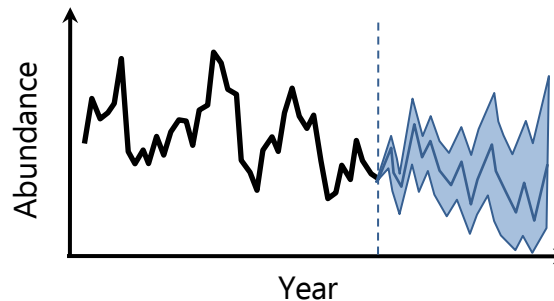
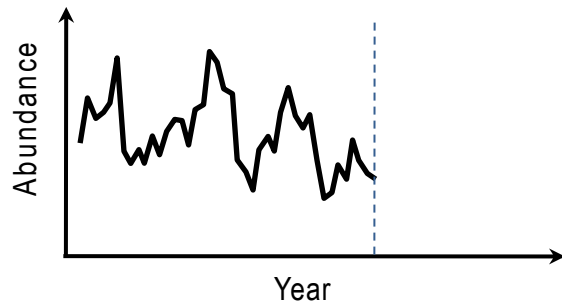
Given what we know about a population from past observations



How might the future look like if we manage using strategy x, y, z?



What does that mean for conservation risks and fishing opportunities?

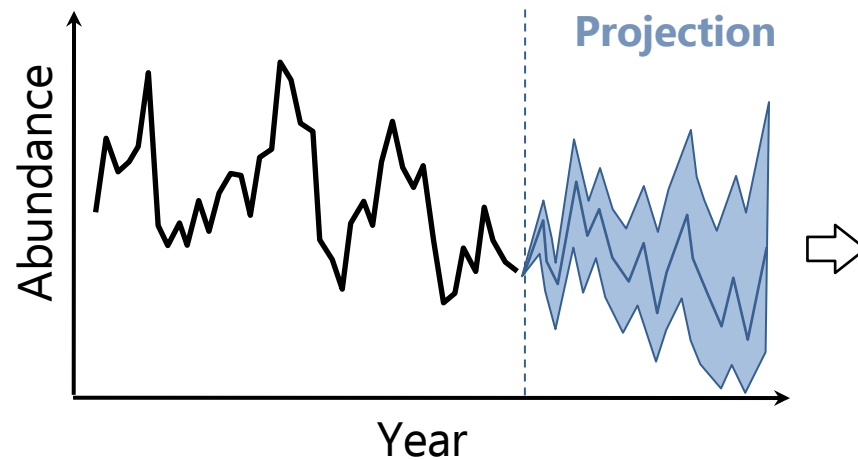


from: Ohlberger, Buhle, Buehrens, and Kendall, "A Management Strategy Evaluation framework to support fishery management of salmon and steelhead in WA State" [Watch](#)



How will the Department develop appropriate performance measures?

MSE framework process will establish performance metrics that enable us to adaptively manage fisheries



Performance Metrics (e.g.)

Opportunity metrics

- Mean harvest
- Stability in harvest

Conservation metrics

- Mean escapement
- Probability above threshold
- pHOS: proportion of natural spawners that are of hatchery origin



How will the Department determine the appropriate hatchery production goals?

Willapa Policy

- “A Hatchery Management Plan shall be created for each facility under Commissioner’s Policy C-3624 and each hatchery shall operate in accordance with the provisions of its HMP.”

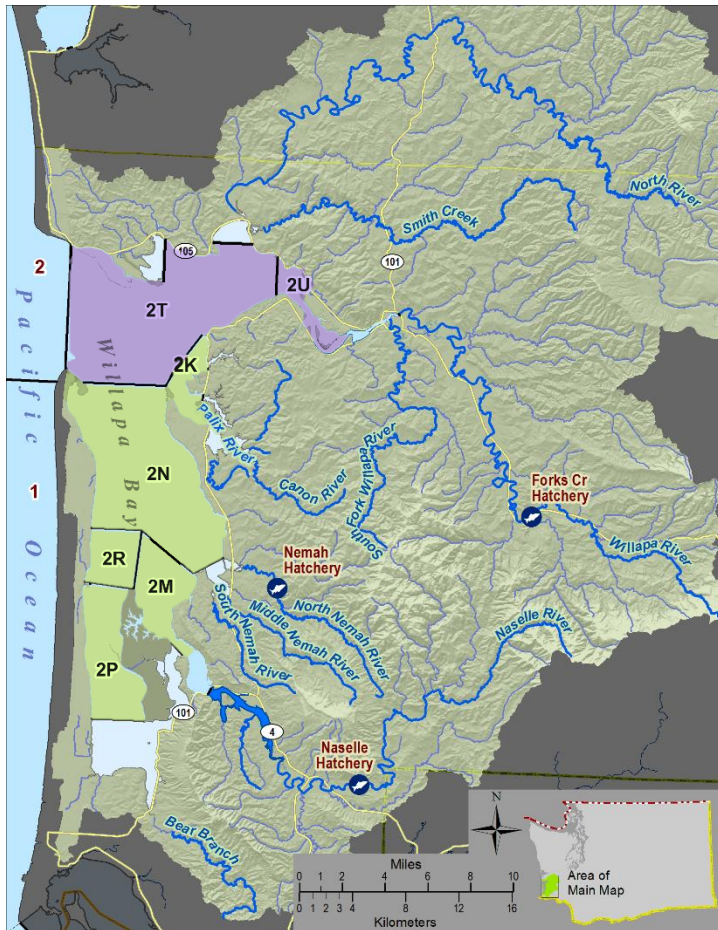
C-3624

- HMPs are based on “best available science on the risks of hatchery production”
- HMPs balance minimizing risks with providing ecological and societal benefits.
- Balance achieved through a transparent structured decision-making (SDM) process using a science-based risk management framework.
- Hatchery production is adaptively managed
- SDM, risk management framework, and adaptive management processes will be described in a Technical Procedures Document – to be completed in 2024.

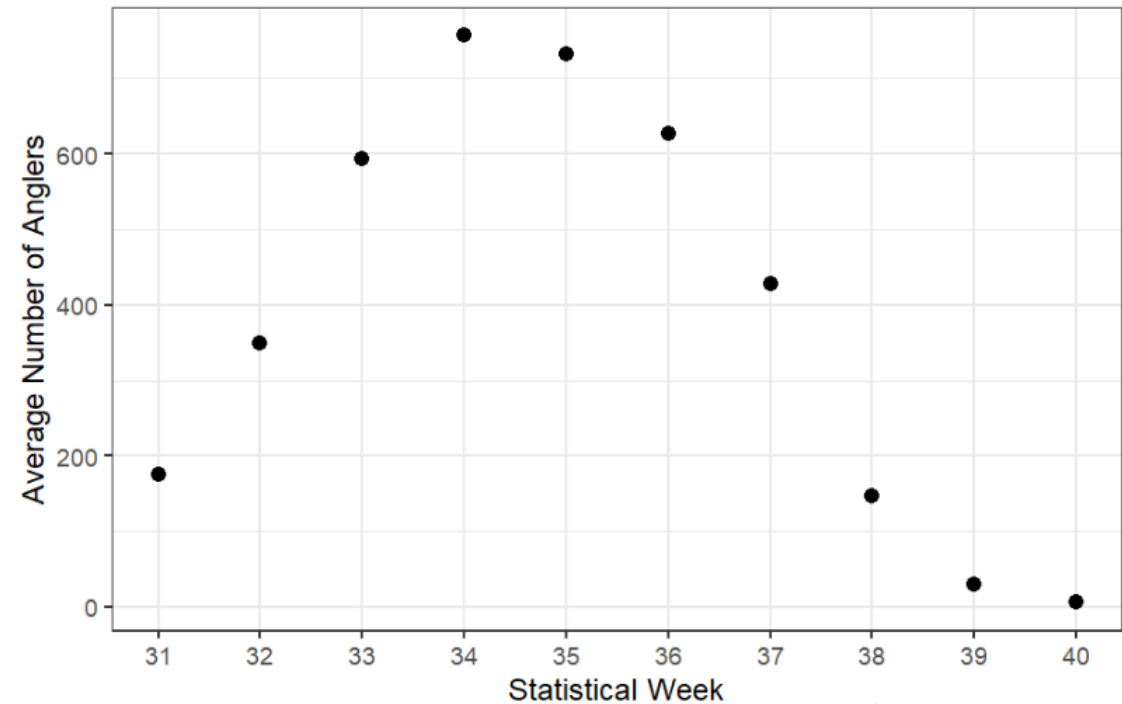


Why prescribe marine area restrictions in the Policy?

No commercial Chinook salmon fisheries shall occur in areas 2T and 2U prior to September 16.



Willapa Bay Marine Recreational Angler Effort 2018-2022



↑
September 16





Timeline to complete Willapa Bay Policy revisions

Timeline for 2023 Willapa Bay Policy Completion

Date	Event	Purpose
July 14	FWC meeting	Briefing for full Commission approval to send out for public comment
August 10-12	FWC meeting	Briefing/Public Comment
September 28-30	FWC meeting	FWC decision



QUESTIONS