

3. Land Transaction

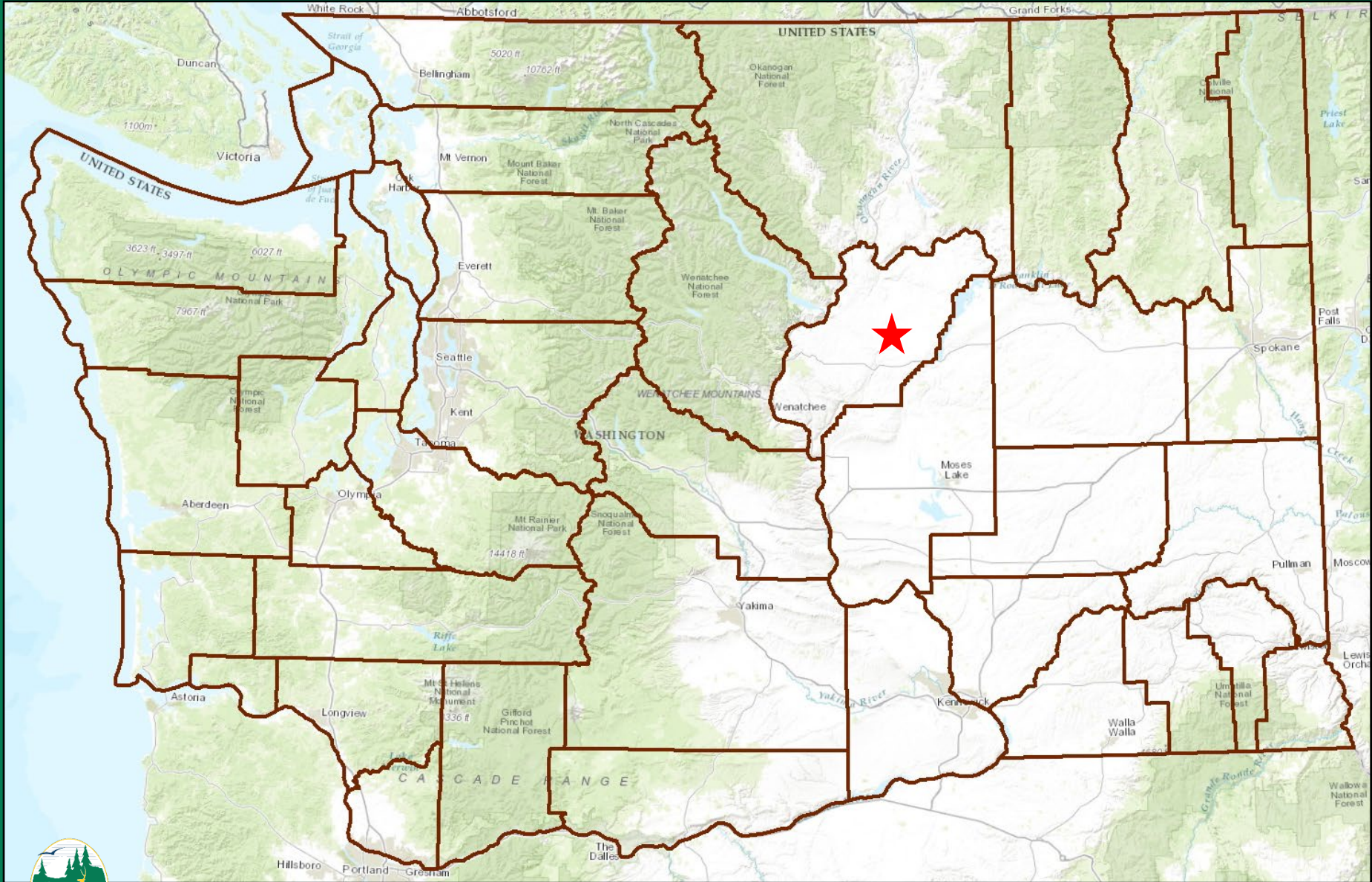
September 29th, 2023

Commission Meeting

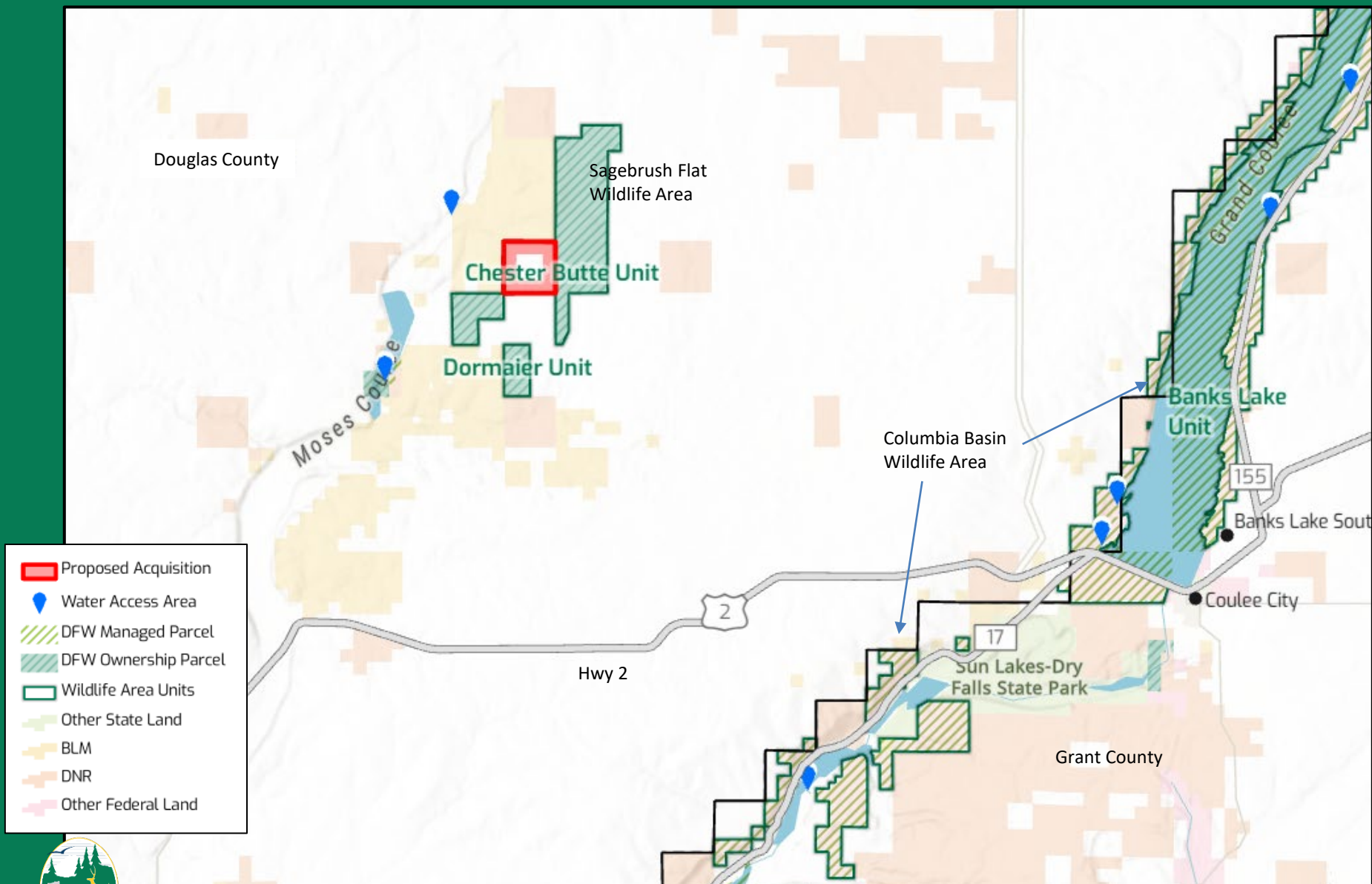
Karen Edwards, Real Estate Services Manager
Wildlife Program/Lands Division



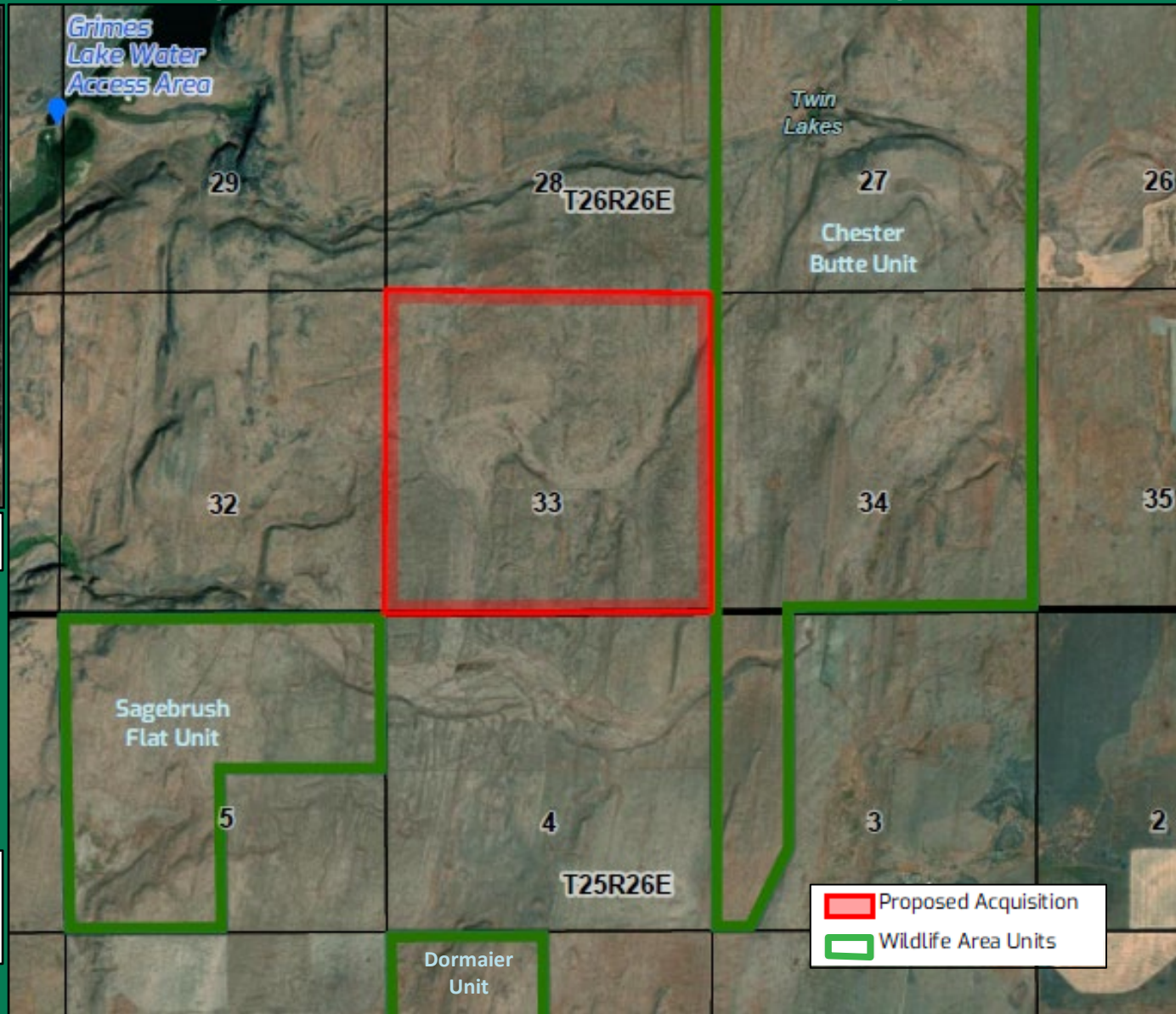
Proposed Acquisition, 650(+/-) Acres, Douglas County Chester Butte Unit, Sagebrush Flat Wildlife Area, Region 2



Proposed Acquisition, 650(+/-) Acres, Douglas County Chester Butte Unit, Sagebrush Flat Wildlife Area, Region 2



Proposed Acquisition, 650(+/-) Acres, Douglas County Chester Butte Unit, Sagebrush Flat Wildlife Area, Region 2



Appraised Value \$230,000



Proposed Acquisition, 650(+/-) Acres, Douglas County Chester Butte Unit, Sagebrush Flat Wildlife Area, Region 2



Photo Credit: Janine Schutt



Photo Credit: Chris Sato



Photo Credit: Chris Sato



Questions

