

# Infanticide in Black Bears

Stephanie Landry

Carnivore Section Manager, Game Division



Washington  
Department of  
**FISH &  
WILDLIFE**



# Infanticide Definition

**The killing of an infant.**



# Sexually Selected Infanticide

**The killing of a female's newborns by an unrelated male so as to bring the female back into estrus for breeding.**

Sexually Selected Infanticide is most common in territorial species

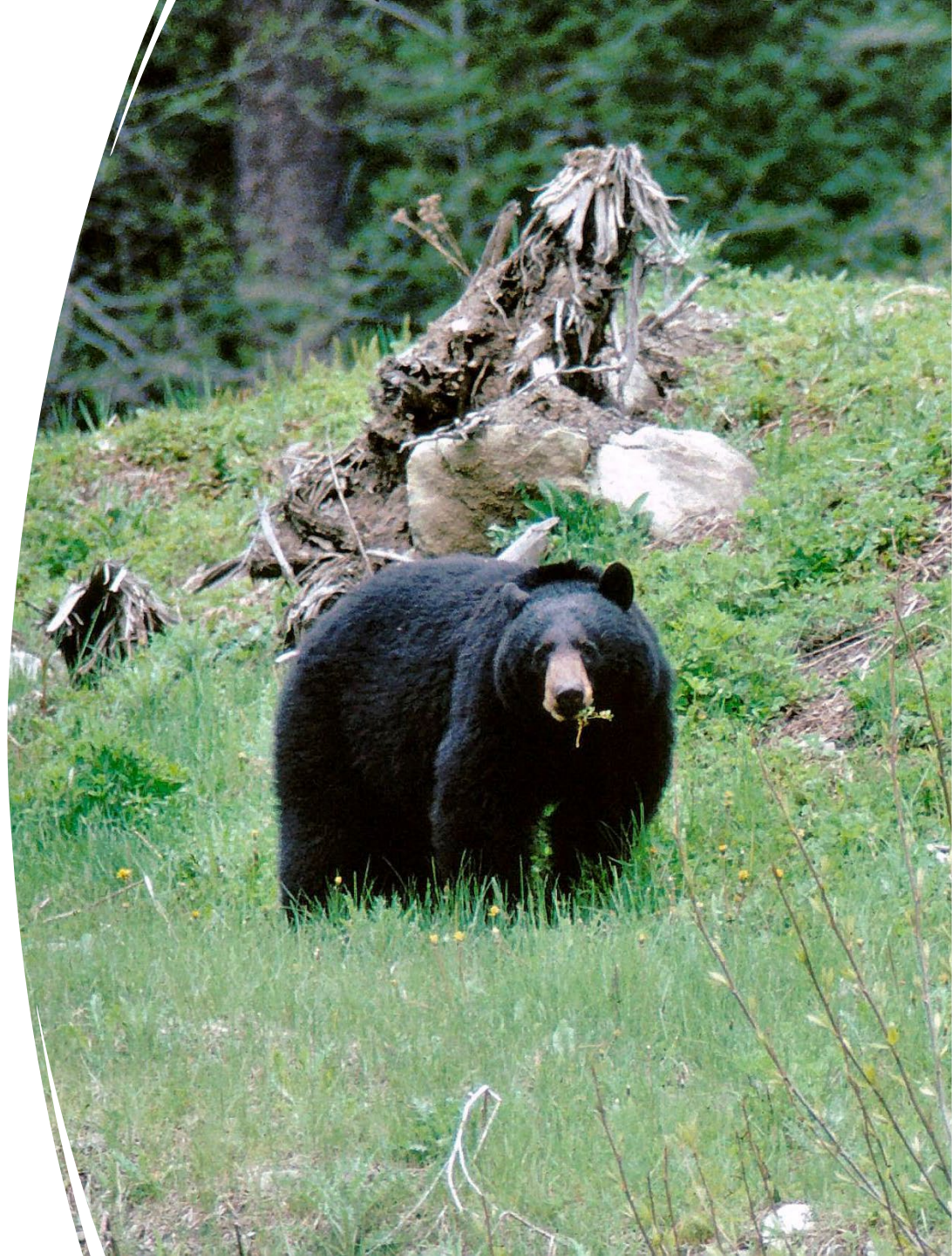
**BLACK BEARS ARE NOT  
CONSIDERED TERRITORIAL**

# Infanticide in Black Bears

---

Black bears have exhibited infanticide in two studied populations

- Florida (Garrison et al. 2007)
- Arizona (LeCount 1987)



# Infanticide in Black Bears

---

Black bears did NOT exhibit infanticide in other studied populations

- Alberta, Canada (Czetwertynski et al. 2007)
- Michigan (Norton et al. 2018)

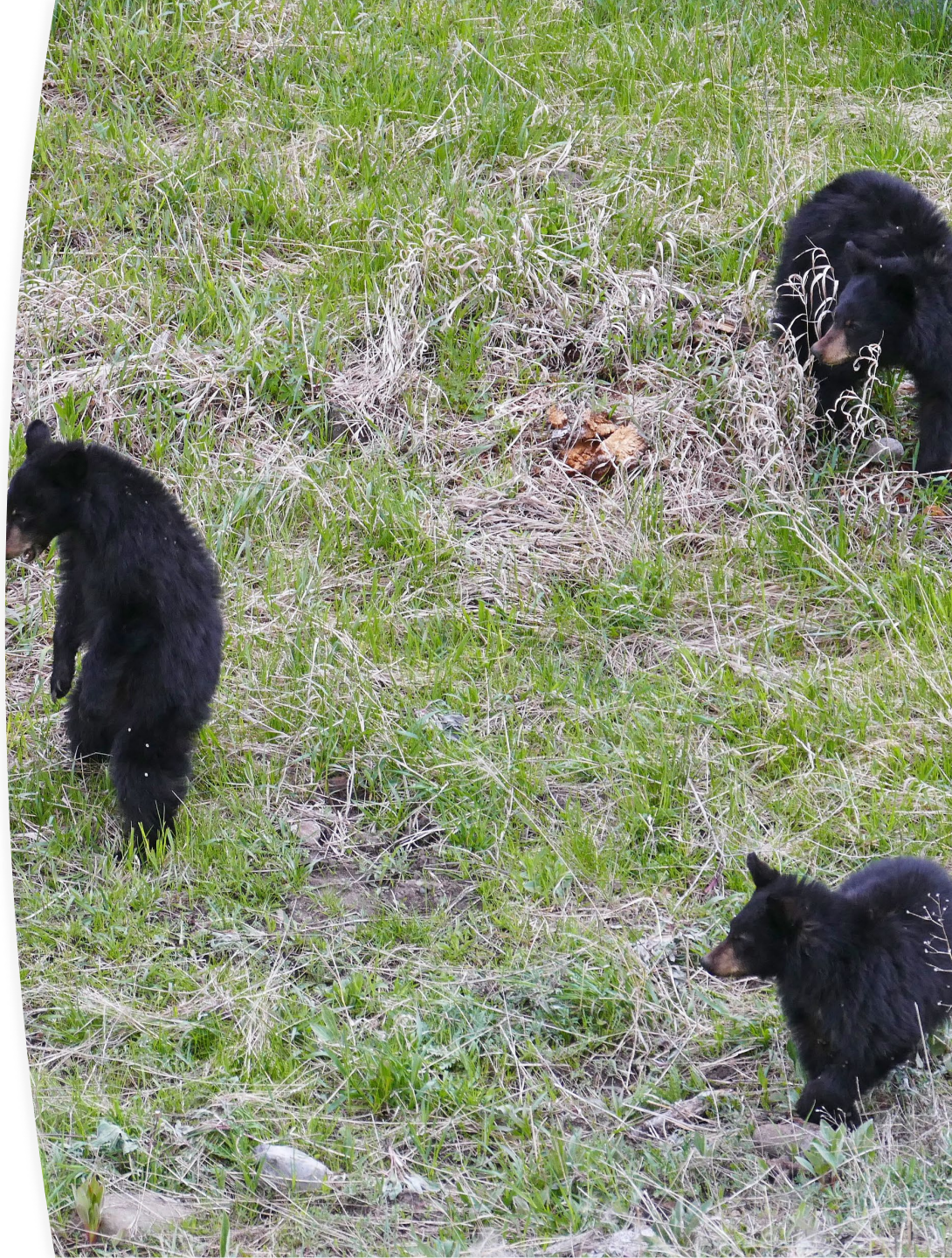


---

# Infanticide in Black Bears

---

In the few instances where infanticide has been observed, it is thought to be driven by density-dependence.



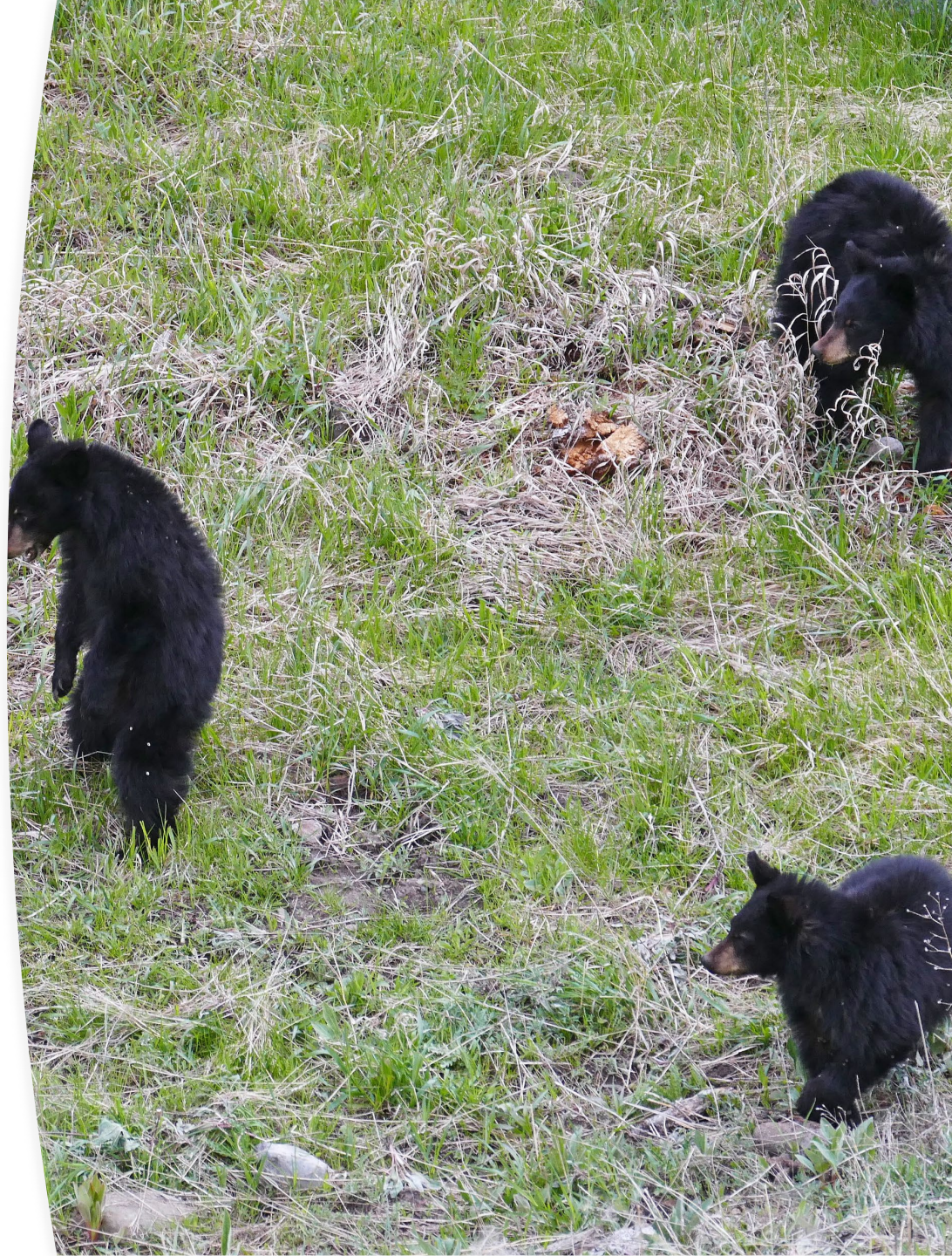
---

# Infanticide in Black Bears

---

In the few instances where infanticide has been observed, it is thought to be driven by density-dependence.

Density-dependence is more common in un hunted populations or areas with poor habitat quality/availability.



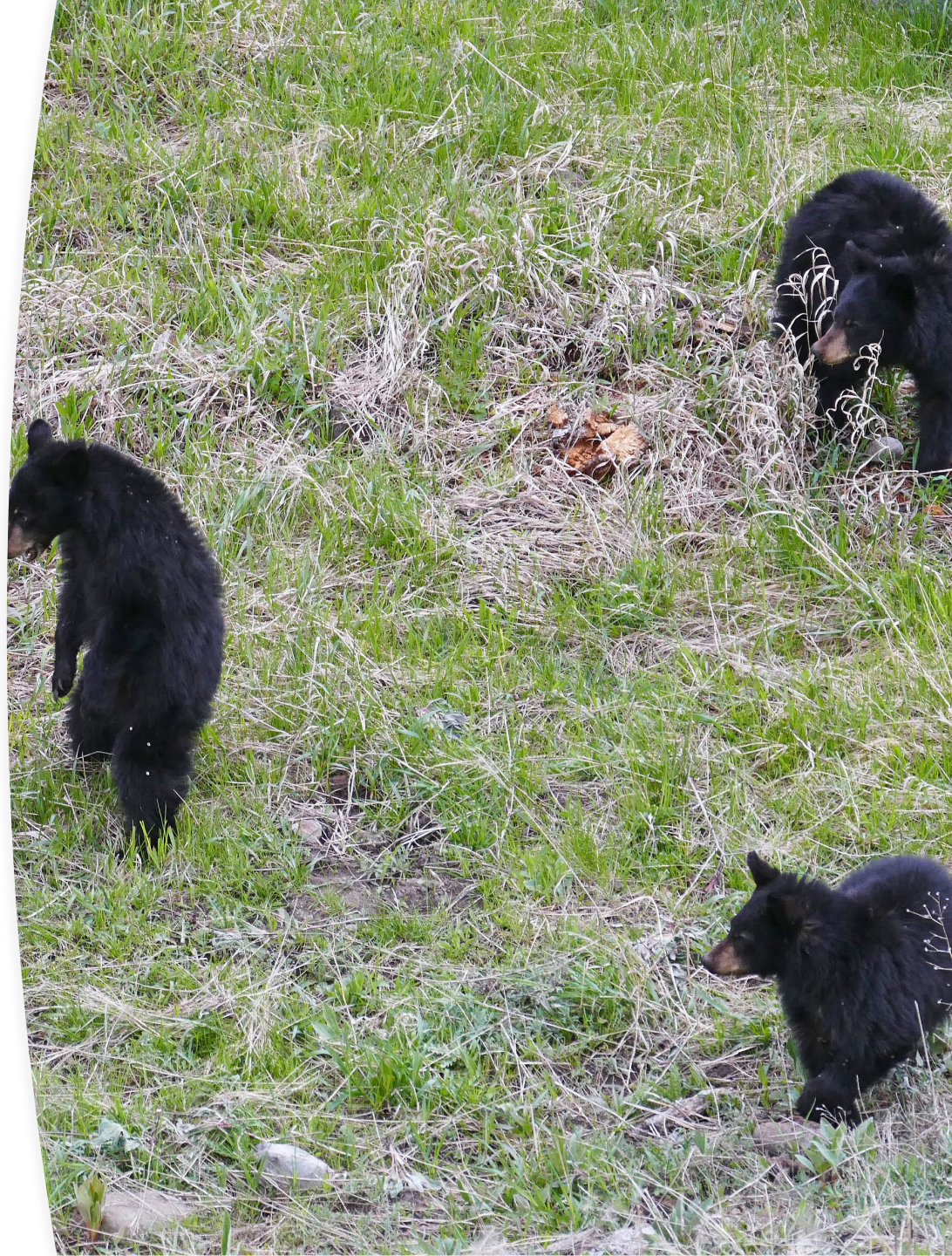


# Infanticide in Black Bears

In the few instances where infanticide has been observed, it is thought to be driven by density-dependence.

Density-dependence is more common in unhunted populations or areas with poor habitat quality/availability.

That is not descriptive of Washington State.



Therefore,

**SEXUALLY SELECTED INFANTICIDE IS  
NOT A LIKELY CONCERN IN BLACK  
BEARS IN WASHINGTON STATE**

# Questions?

