

Public Meeting Guidelines and Etiquette

- Upon joining the virtual meeting, your microphone will be muted automatically.
- In case of any technical issues during the meeting, notify us in the chat, and we will help you. Please note that the chat will only be monitored for technical assistance.
- Public comments are welcome and will be rotated between attendees.
- To ask a question or make a comment, please use your device's "raise hand" feature. If on the phone, dial *9 on Zoom / *5 on Microsoft Teams, and if using a computer, click the hand/reactions icon at the bottom of your screen.
- During the comment period, the host will enable you to unmute yourself. You can then unmute yourself by pressing the mute button on your device or dialing *6 on your phone.
- Keep discussions focused on the agenda items and questions at hand. Offensive, disrespectful, or derogatory language, including profanity, personal attacks, threats, or insults towards individuals, governments, or organizations, is strictly prohibited.
- Assume positive intentions from those speaking and listen respectfully.
- To ensure a balanced discussion, limit your comments to two minutes with one clarifying follow-up question.
- Provide constructive feedback regarding the fisheries in which you participate. Remember that the most compelling comments are those that pertain to the topics under discussion.
- WDFW staff may close public comment to stay on schedule with the agenda or to provide others who still need to comment with an opportunity to speak.
- Meetings will be recorded and posted online.
- If you have further questions or comments, please submit them in written format on our public comment webpage

[Public Input | Washington Department of Fish and Wildlife](#)



2024 North of Falcon Public Meeting Grays Harbor & Willapa Bay Fisheries Discussion

Link to join meeting via Zoom:

[Webinar Registration - Zoom](#)

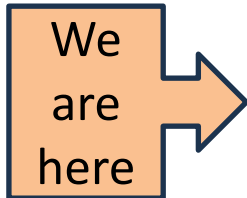


North of Falcon Process

- 1) Forecast the abundance of each stock
- 2) Determine if there is a harvestable surplus
- 3) Model fisheries to determine which stocks are the constraints
- 4) Predict what we will catch
- 5) Depending on the area, negotiate with treaty tribes and other states



2024 South Coast NOF Public Meeting Schedule



DATE	EVENT
March 27	North of Falcon Meeting #2 (hybrid) 9AM PST. Lynwood Embassy Suites, 20610 44 th Ave. W, Lynwood, WA 98036. Join Zoom Web Conference
March 28	Joint Willapa Bay and Grays Harbor Fisheries Discussion (virtual) 6PM to 8PM PST. Join Zoom Web Conference
April 6-11	Pacific Fishery Management Council Meeting #2 View Meeting
April 16	Willapa Bay & Grays Harbor Final Draft Fisheries Package (virtual) 6PM to 8PM PST. Join Zoom Web Conference

Entire Schedule and links to individual meetings, including other regional meetings, can be found here:

<https://wdfw.wa.gov/fishing/management/north-falcon/public-meetings>



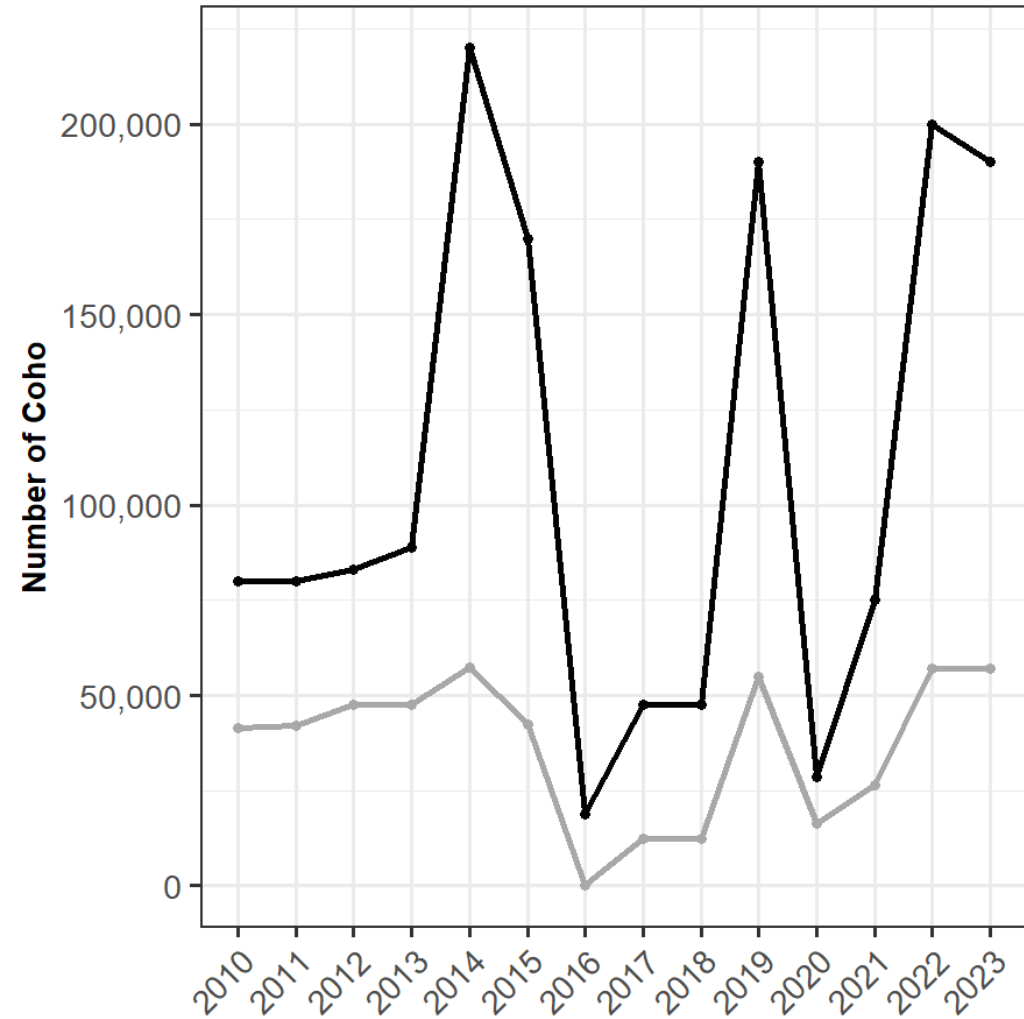
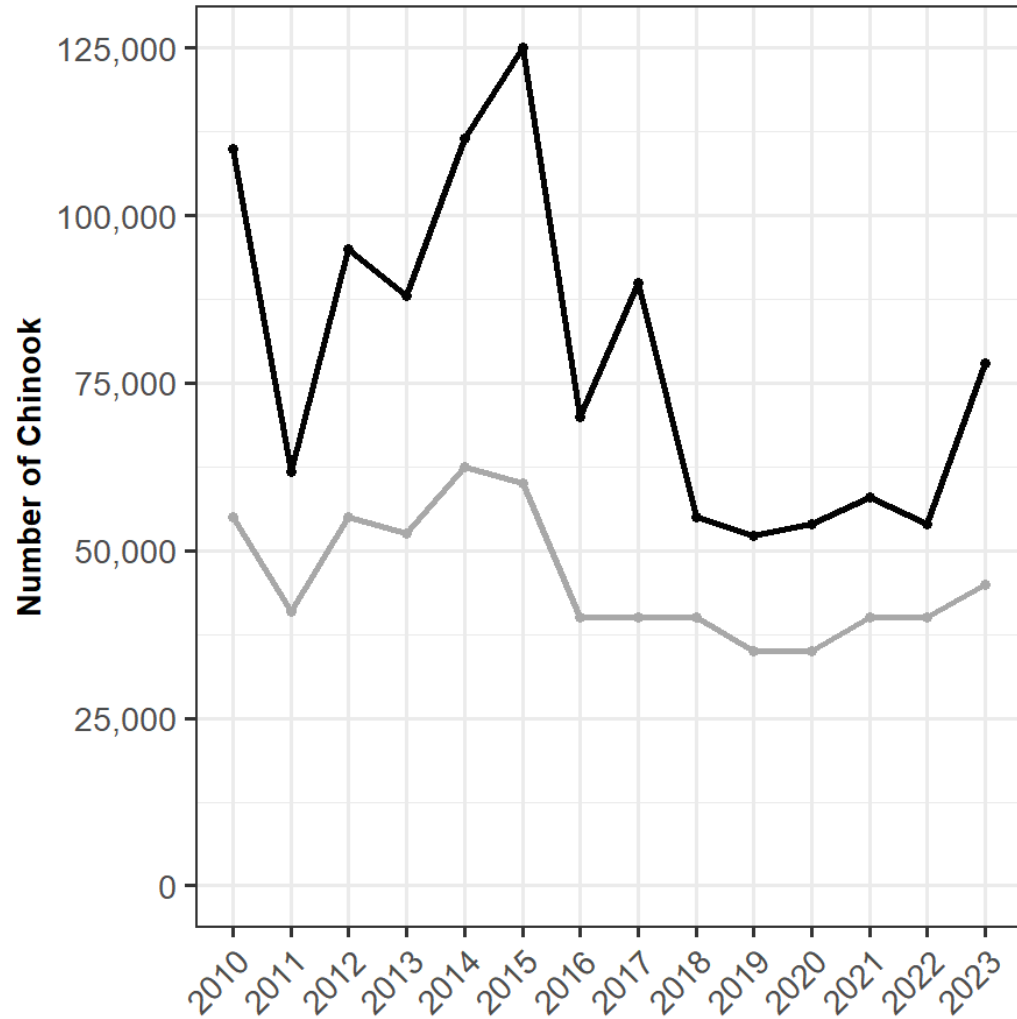
Proposed Non-Treaty Ocean Quotas for 2024

Alternative #1		Alternative #2		Alternative #3	
2023	2024	2023	2024	2023	2024
Chinook 85,000	Chinook 85,000	Chinook 75,000	Chinook 78,000	Chinook 65,000	Chinook 72,000
Coho 200,000	Coho 105,000	Coho 185,000	Coho 95,000	Coho 170,000	Coho 80,000



Ocean Quotas 2010 to 2023

Marine Areas 1-4 Annual Ocean Quotas



◆ Non-treaty ◆ Treaty





Grays Harbor Management Objectives & Fishery Proposals

2024 Grays Harbor Fishery Considerations

- Humptulips River
 - One fish daily limit for the season.
- Chehalis River jack fishery
 - Open up to Fuller Bridge
- December fisheries
 - All month; until the 15th; or closed



2024 Grays Harbor Recreational Season Comparison

	2023	Model A	Model B	Model C
Marine 2-2 North	Aug 1-Sept 15	Aug 1-Sept 15	Aug 1-Sept 15	Aug 1-Sept 15
	1-fish bag, release wild Chin & wild coho	1-fish bag, release wild Chin & wild coho	1-fish bag, release wild Chin & wild coho	1-fish bag, release wild Chin & wild coho
Marine 2-2 East	Sept 16-Nov 30	Sept 16-Nov 30	Sept 16-Nov 30	Sept 16-Nov 30
	2-fish bag, release Chin	2-fish bag, release Chin	2-fish bag, release Chin	2-fish bag, release Chin
Humptulips	Sept 1-Sept 30	Sept 1-Sept 30	Sept 1-Sept 30	Sept 1-Sept 30
	2-fish bag, release wild Chinook and wild coho	2 -1-fish bag, release wild Chinook and wild coho	2 -1-fish bag, release wild Chinook and wild coho	2 -1-fish bag, release wild Chinook and wild coho
	Oct 1-Oct 31	Oct 1-Oct 31	Oct 1-Oct 31	Oct 1-Oct 31
	2-fish bag, 1 Chin, release wild Chin and wild coho	2 -1-fish bag, release wild Chinook and wild coho	2 -1-fish bag, release wild Chinook and wild coho	2 -1-fish bag, release wild Chinook and wild coho
	Nov 1 - Dec 31	Nov 1 - Dec 31	Nov 1 - Dec 31 15	Nov 1 - Dec 31 Nov 3
	1-fish bag, release Chin & wild coho	1-fish bag, release Chin & wild coho	1-fish bag, release Chin & wild coho	1-fish bag, release Chin & wild coho
Lower Chehalis Mainstem	Sept 16-Nov 30	Sept 16-Nov 30	Sept 16-Nov 30	Sept 16-Nov 30
	2-fish bag, release adult Chin	2-fish bag, release adult Chin	2-fish bag, release adult Chin	2-fish bag, release adult Chin
	Dec 1-Dec 31	Dec 1-Dec 31	Dec 1- Dec 31 Dec 15	Dec 1-Dec 31
	1-fish bag, release Chin	1-fish bag, release Chin	1-fish bag, release Chin	1-fish bag, release Chin
Tribes, include Chehalis above Fuller Bridge	Oct 1-Nov 30	Oct 1-Nov 30	Oct 1-Nov 30	Oct 1-Nov 30
	2-fish bag, release adult Chin	2-fish bag, release adult Chin	2-fish bag, release adult Chin	2-fish bag, release adult Chin
	Dec 1-Dec 31	Dec 1-Dec 31	Dec 1- Dec 31 Dec 15	Dec 1-Dec 31
	1-fish bag, release Chin	1-fish bag, release Chin	1-fish bag, release Chin	1-fish bag, release Chin



2024 Grays Harbor Sport Fishery Proposals

Model Harvest Comparison

Model	Chehalis Coho					Humptulips					GH Coho		
						Chinook			Coho		WDFW Sector Sharing		
	2-2	FW	NT Comm	Wild HR	Wild Esc	2-2	FW	NT Comm	FW	Wild HR	FW	2-2	NT Comm
NALF	2,833	14,436	4,668	20.73%	34,752	177	1,261	29	1,487	3.19%	15,933	3,003	4,711
A	2,849	14,520	4,673	21.16%	32,379	177	937	26	1,498	3.21%	16,018	3,021	4,715
B	2,833	13,834	4,647	20.85%	32,334	177	936	26	1,432	3.21%	15,267	3,003	4,689
C	2,833	13,027	4,647	20.18%	32,762	177	930	26	1,340	3.20%	14,367	3,003	4,689

Model	Chum			GH Chinook Natural Spawning Escapement		
	2-2	FW	NT Comm	Wild	Hatchery	Total
NALF	89	1,288	6,175	11,108	2,099	13,207
A	89	1,288	8,263	11,125	3,475	14,600
B	89	1,264	8,263	11,125	3,476	14,602
C	89	1,241	8,263	11,126	3,482	14,608





Willapa Bay Management Objectives & Fishery Proposals

2024 Fisheries proposals for Willapa Bay

- Increase natural-origin coho spawning on Willapa and Naselle Rivers
 - Mark-selective coho fisheries
 - Limit commercial fishery openers in 2U and 2T
- Reduce snagging on the Naselle river
 - Aug. 1st-Oct. 15, any fish which is not legally hooked shall count toward the daily bag limit
- Natural-origin fish conservation and reduce gear conflict on Naselle river
 - From the full spanning concrete diversion structure at the Naselle Hatchery upstream to the Big Hill Bridge: Restrict fishing from floating device



2024 Willapa Bay Fishery Model Run Data Summary - North of Falcon

Preliminary Draft

Model	Management Objectives			Expected Natural Chinook Impact Rate		Expected Chum Impacts	Expected Escapement			Policy Priorities				Allocation % by Sector				Max. # Commercial Days Scheduled (in any area)
	Chinook	Coho	Chum	Willapa River < 20%	Naselle River < 20%		Natural Origin Chinook Goal=4,353	Natural Origin Coho Goal=13,600	Chum Total Goal= 35,400	Willapa Bay Total Expected Harvest				Chinook		Coho		
										Chinook - Hatchery Origin Retention		Coho Total *		Rec	Comm	Rec	Comm	
A - NALF New abundances, last year's fisheries	Actively manage not to exceed 20% natural origin CHK Harvest rate impacts on Willapa & Naselle rivers	Achieve natural origin spawner escapement goal	Achieve spawner escapement goal for naturally spawning chum	15.6%	15.8%	16.3%	2,968	14,512	67,268	3,687	3,808	6,147	41,091	49.2%	50.8%	13.0%	87.0%	34
B				15.9%	18.6%	39.4%	2,920	15,262	48,701	3,687	5,085	5,306	41,626	42.0%	58.0%	11.3%	88.7%	40

Chinook MSF = Mark Selective Fishery Green = Meets management objective Red = Does not meet management objective

MSF-Wild fish release required

*Recreational coho total include marine and freshwater hatchery coho expected harvest; Commercial coho total includes hatchery and natural coho expected harvest

Model A - 2024 preseason abundances with 2023 fisheries (NALF)

Model B - **Commercial proposal**, No change to Marine Rec fisheries, **FW 2 fish adult daily limit, Willapa, Naselle, Palix, MF & SF Nemah rivers coho mark selective**

North, Smith, Bear, and North Nemah: 2 adult limit with only 1 wild coho retention



2024 Willapa Bay Modeled Fishery Description

Model Run	Fishery	Chinook Total Daily Limit	Chinook fishery - MSF UM Release Required for all fisheries	Natural Coho Daily Limit	Hatchery Coho Daily Limit	Chum	Commercial Ex-Vessel Value
A-NALF	Marine Rec	2	MSF starting August 1	2	2	Retention	
	FW Rec	2	MSF	1	2	Retention	
	Commercial	Tangle nets	Start week 34 in south bay through wk 38	-	-	Retention	\$813,936
		November	2T, 2U wks 44-48; 2N, 2R wks 44-47, 2M wks 45-48	-	-	Retention	
B	Marine Rec	2	MSF starting August 1	2	2	Retention	
	FW Rec	2	MSF	0 Willapa, Naselle, Palix, M & S Nemah; 1 wild coho North, Smith, Bear, N. Nemah	2	Retention	
	Commercial	Tangle nets	Start week 33 in south bay through wk 38, 2U through wk 40	-	-	Retention	\$965,293
		November	2T, N, R wks 44-48; 2U & M wks 45-48	-	-	Retention	

Model A - 2024 preseason abundances with 2023 fisheries (NALF)

Model B - **Commercial proposal**, No change to Marine Rec fisheries, **FW 2 fish adult daily limit**, Willapa, Naselle, Palix, MF & SF Nemah rivers coho mark selective
North, Smith, Bear, and North Nemah: 2 adult limit with only 1 wild coho retention

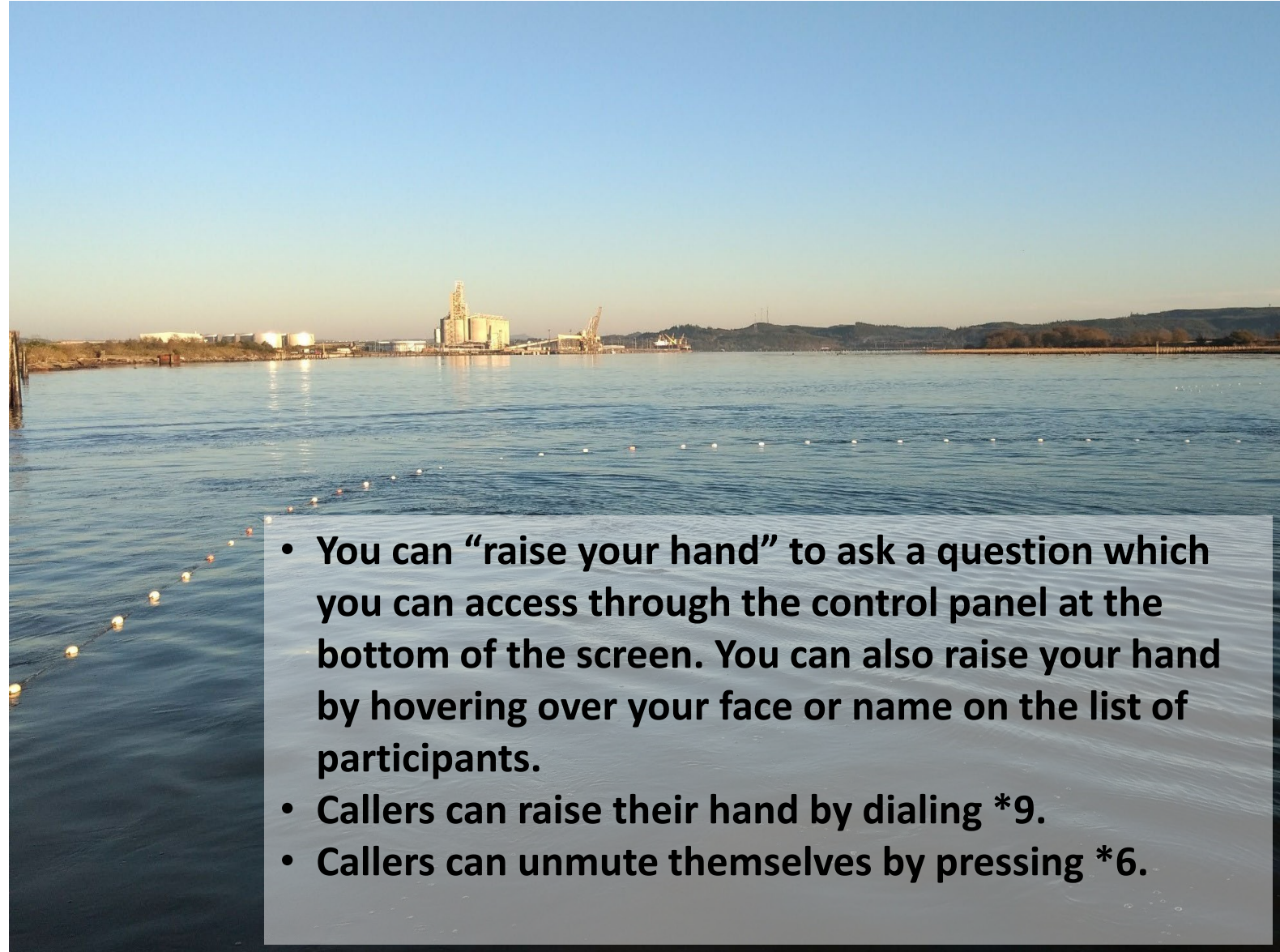


Questions?

**Link to submit NOF-related
Public comments electronically:**
<https://wdfw.wa.gov/fishing/management/north-falcon>

**Address to join our Grays Harbor
distribution list:**
GraysHarbor@dfw.wa.gov

**Address to join our Willapa Bay
distribution list:**
WillapaBay@dfw.wa.gov



- You can “raise your hand” to ask a question which you can access through the control panel at the bottom of the screen. You can also raise your hand by hovering over your face or name on the list of participants.
- Callers can raise their hand by dialing *9.
- Callers can unmute themselves by pressing *6.

