

Land Transactions

Commission Meeting August 9, 2024

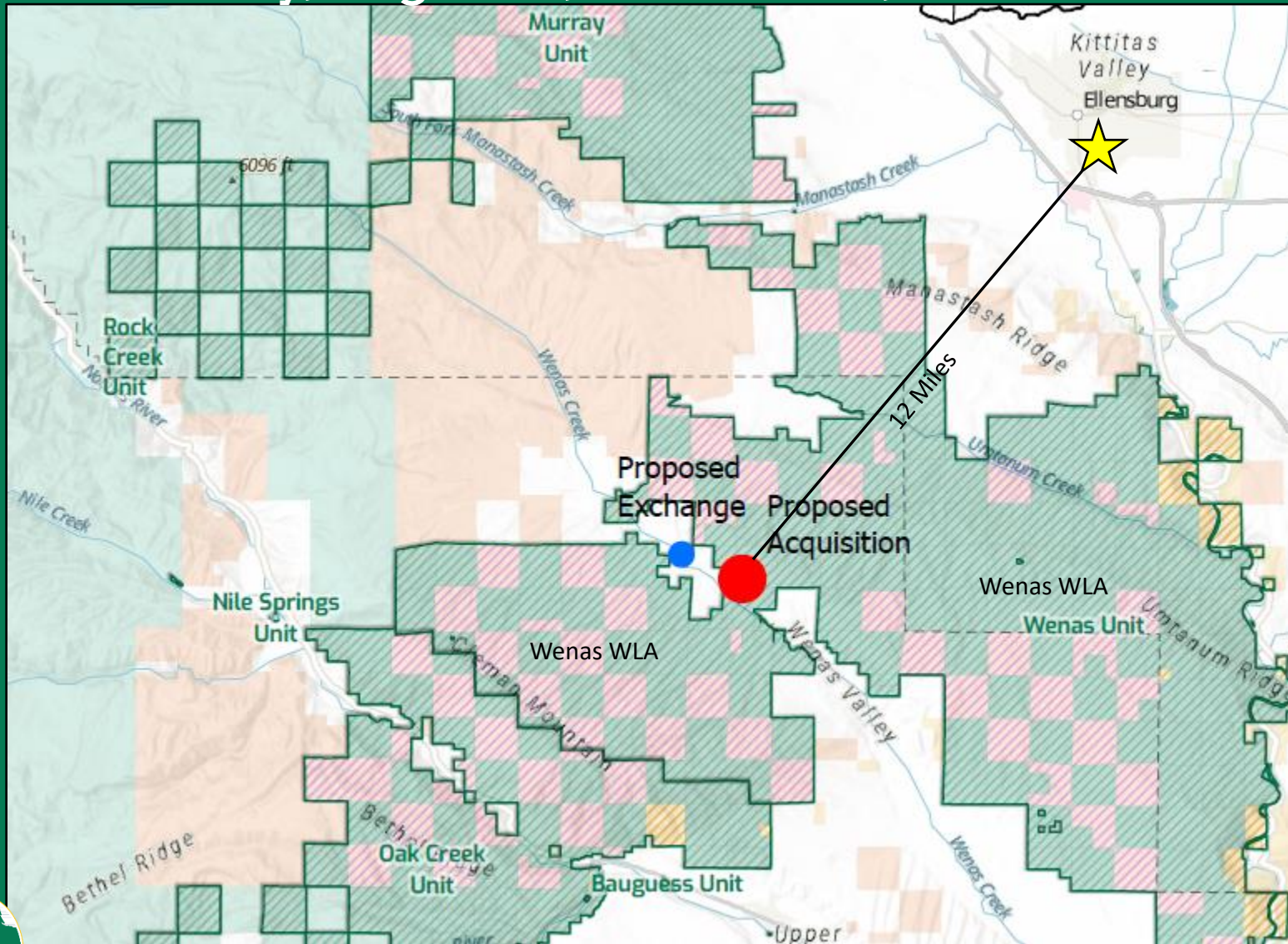
Lisa Coffman, Real Estate Services
Wildlife Program/Lands Division



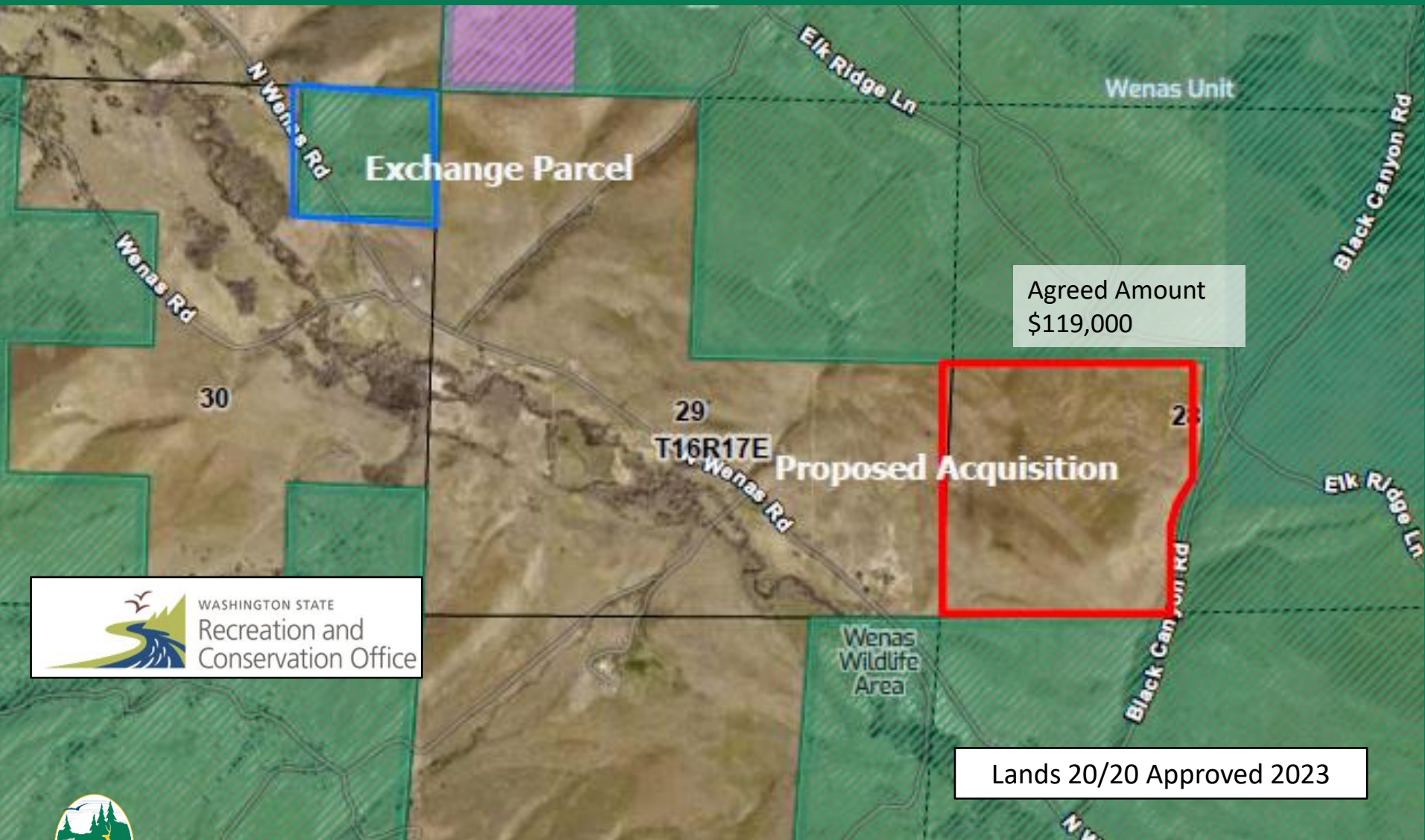
Acquisition of Wenas Black Canyon, 150(+/-) Acres in Yakima County, Region 3, Wenas Unit, Wenas Wildlife Area



Acquisition of Wenas Black Canyon, 150(+/-) Acres in Yakima County, Region 3, Wenas Unit, Wenas Wildlife Area



Acquisition of Wenas Black Canyon, 150(+/-) Acres in Yakima County, Region 3, Wenas Unit, Wenas Wildlife Area



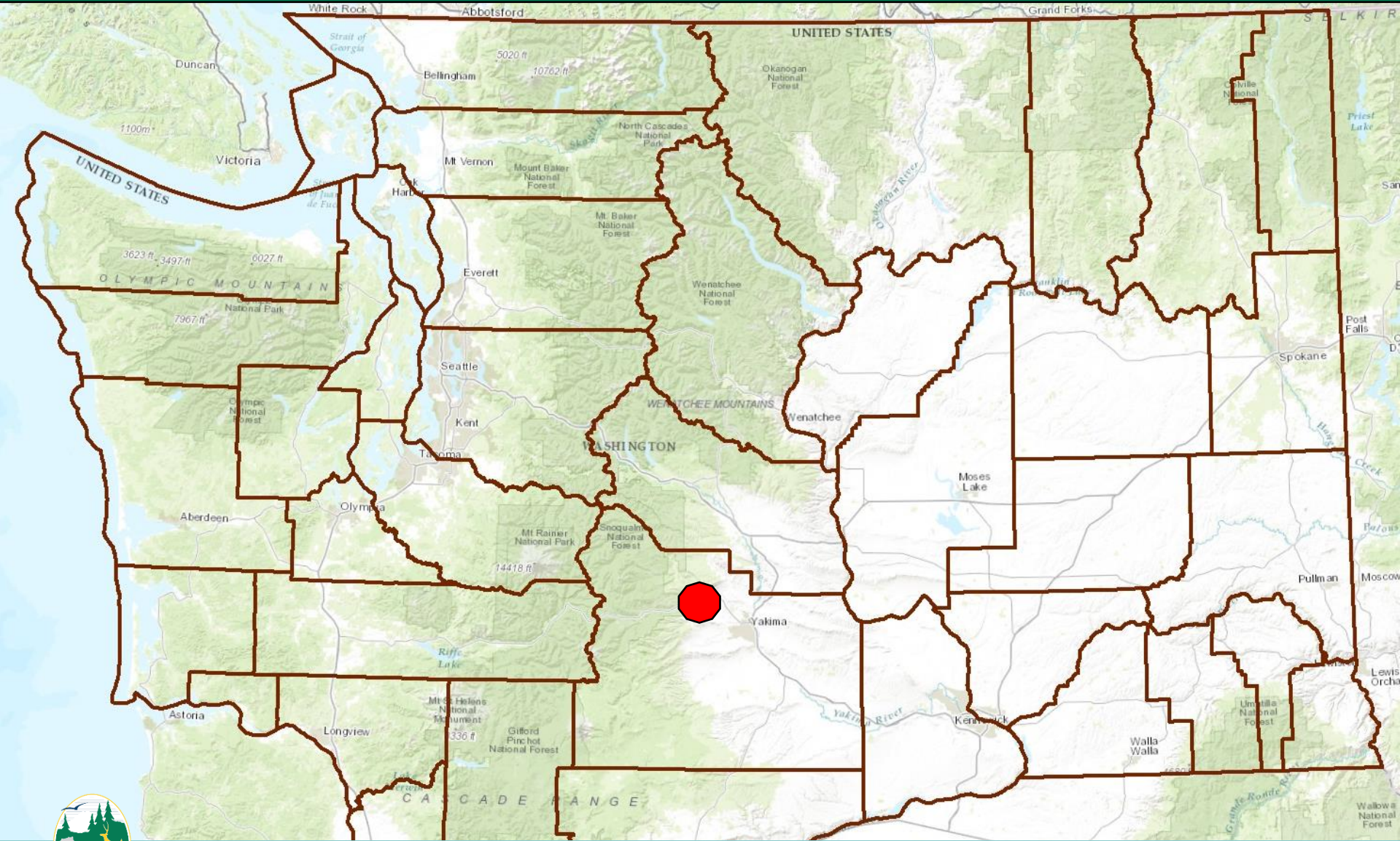
Lands 20/20 Approved 2023



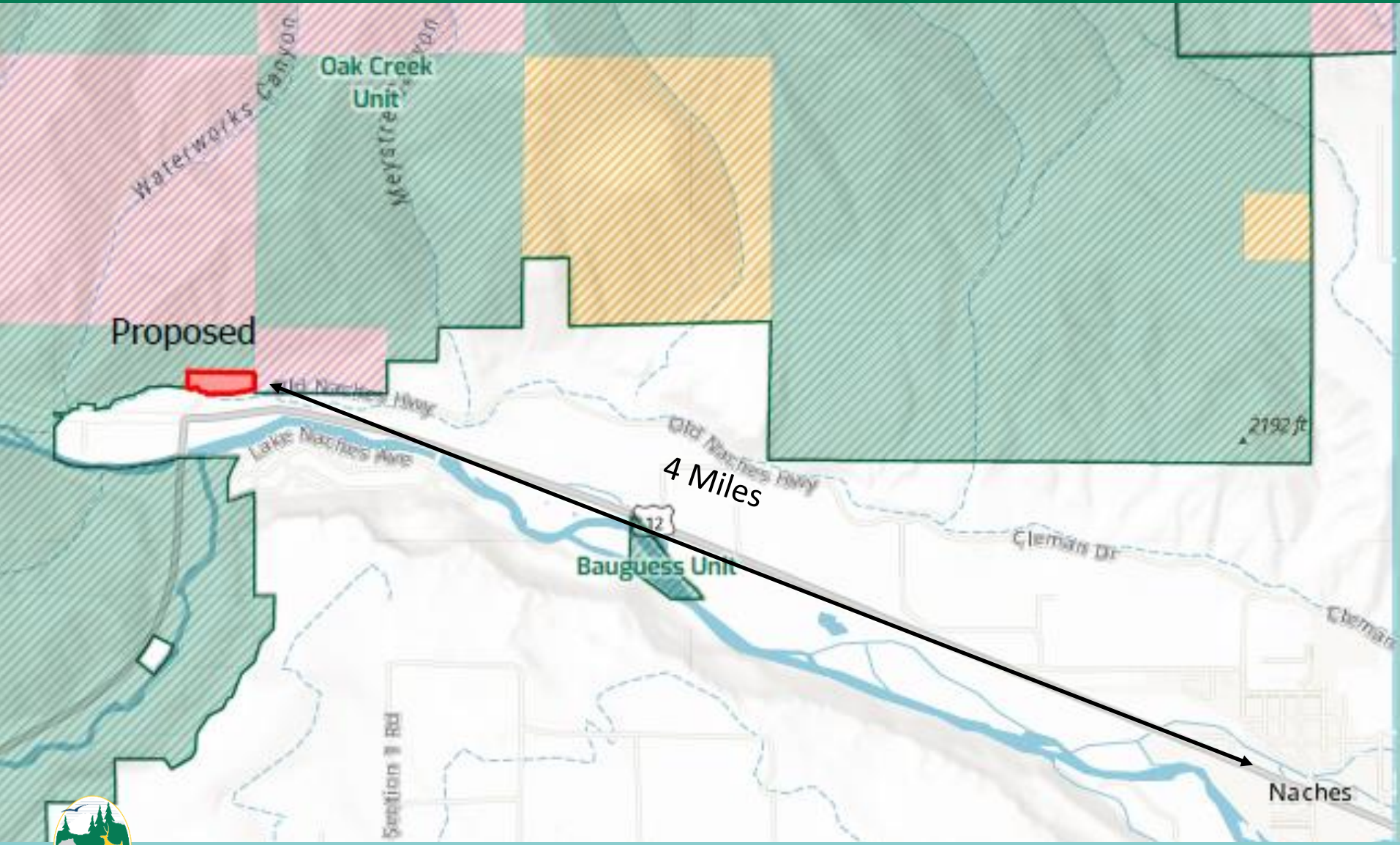
Acquisition of Wenas Black Canyon, 150(+/-) Acres in Yakima County, Region 3, Wenas Unit, Wenas Wildlife Area



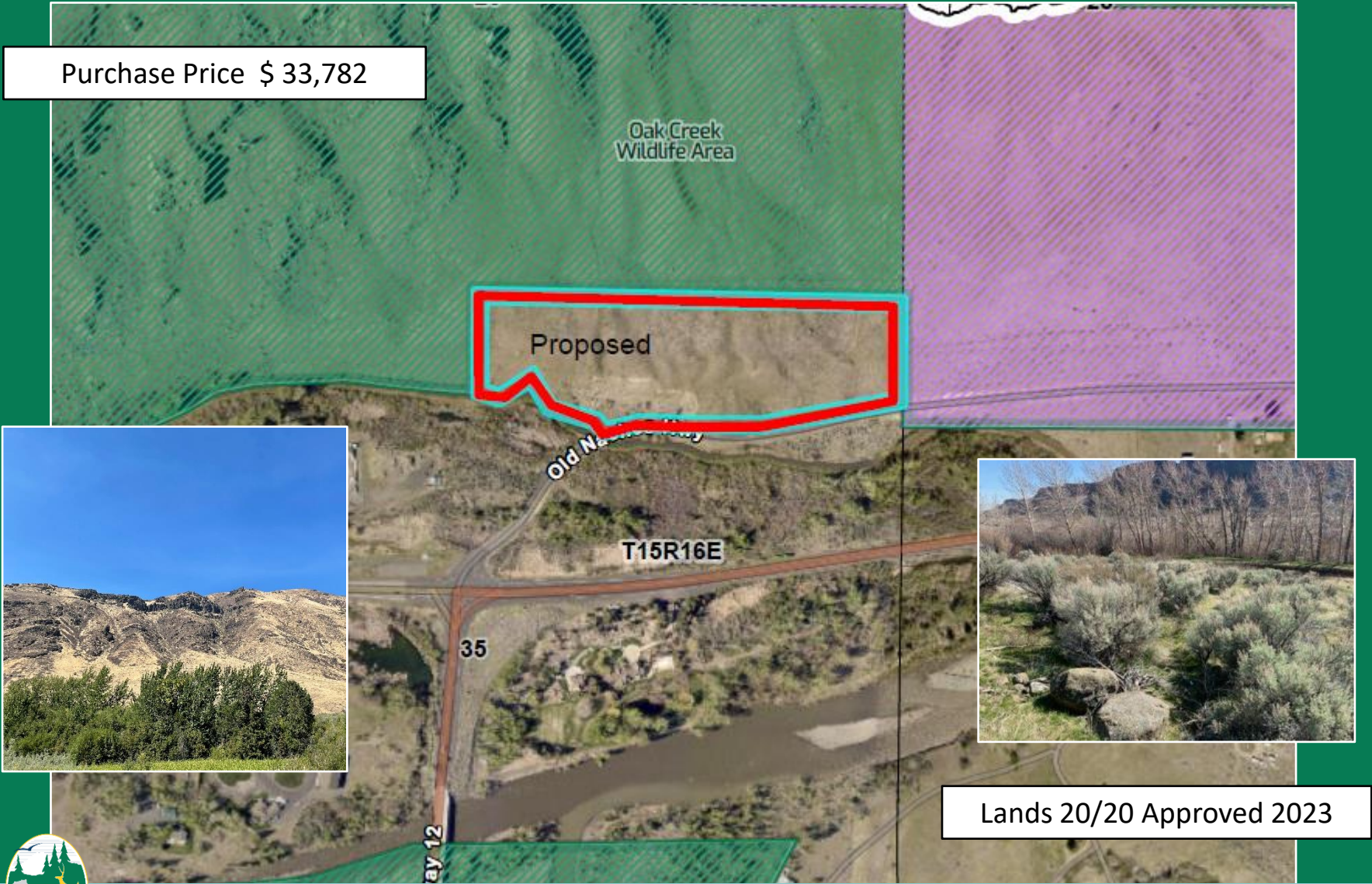
Acquisition of WSDOT Naches 11(+/-) Acres in Yakima County, Region 3, Oak Creek Unit, Oak Creek Wildlife Area



Acquisition of WSDOT Naches 11 (+/-) Acres in Yakima County, Region 3, Oak Creek Unit, Oak Creek Wildlife Area



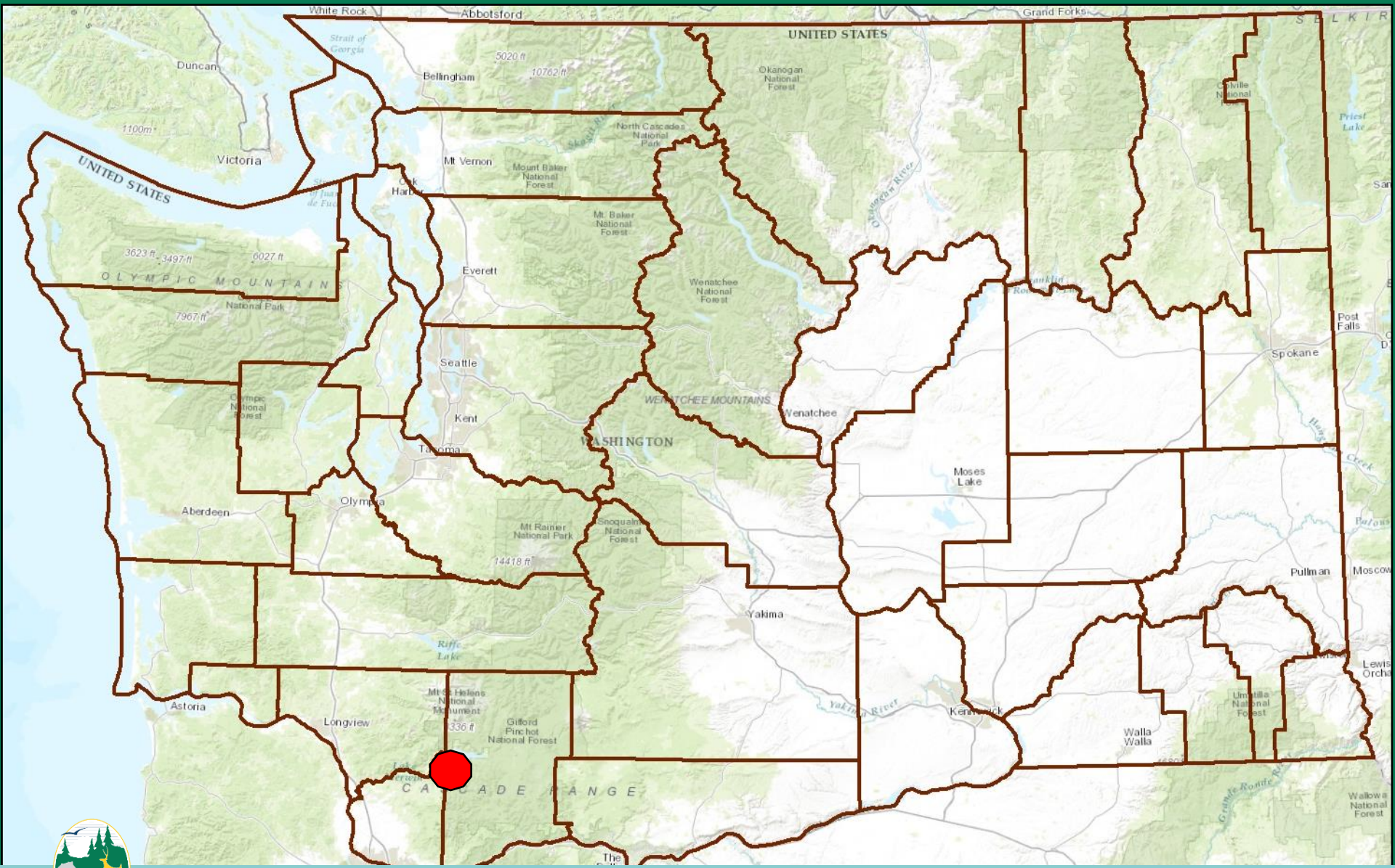
Acquisition of WSDOT Naches 11(+/-) Acres in Yakima County, Region 3, Oak Creek Unit, Oak Creek Wildlife Area



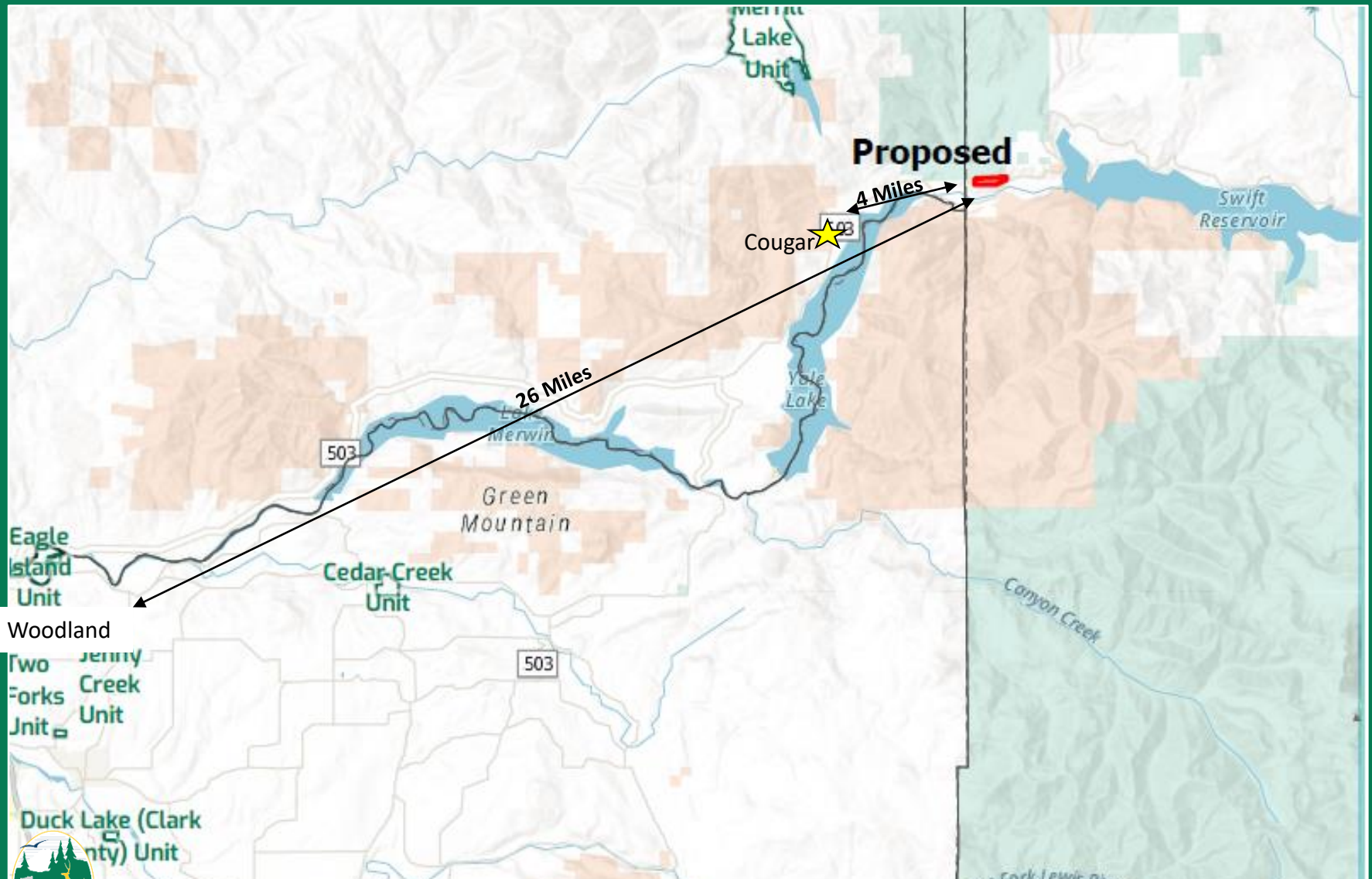
Acquisition of WSDOT Naches 11 (+/-) Acres in Yakima County, Region 3, Oak Creek Unit, Oak Creek Wildlife Area



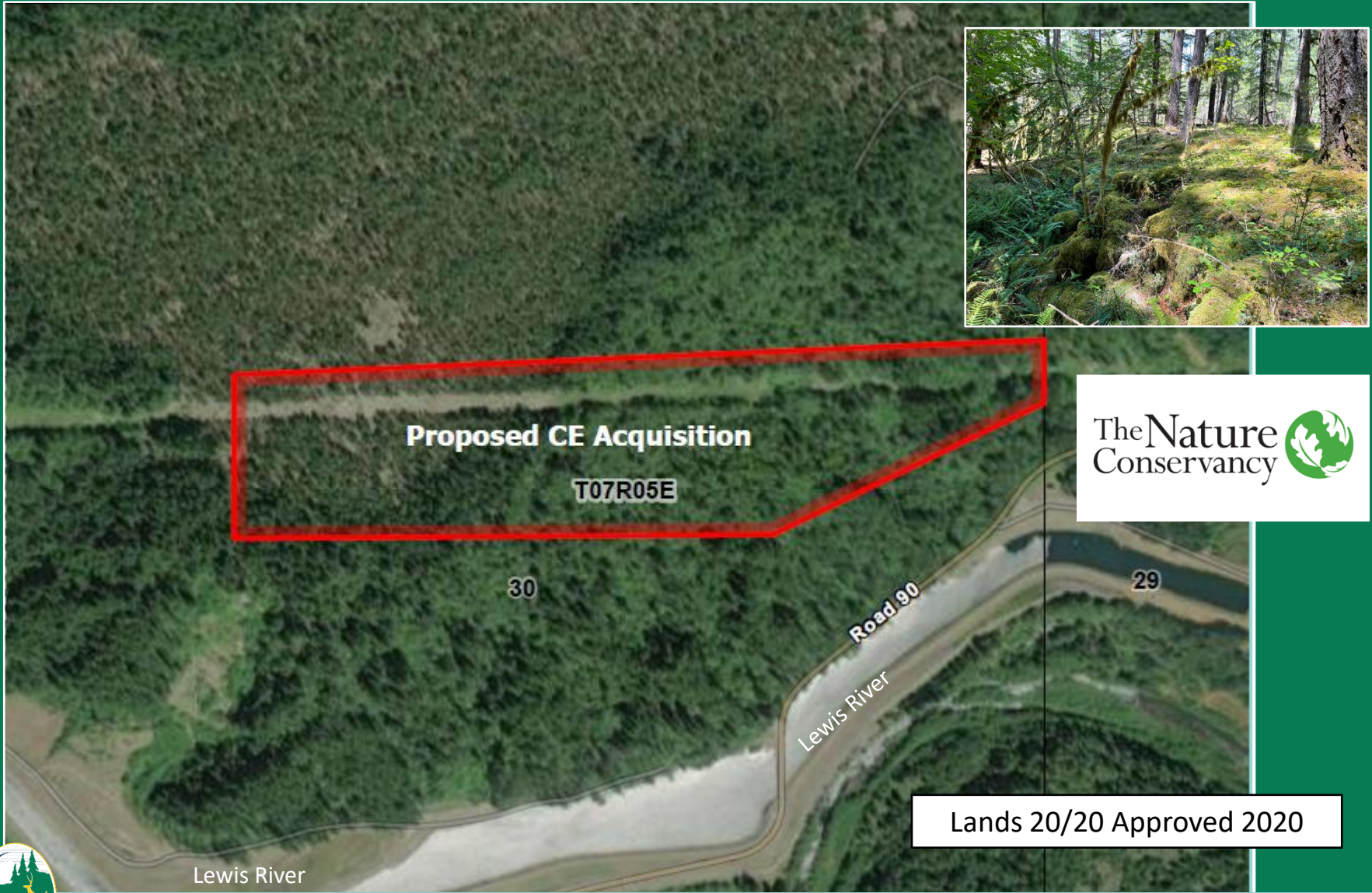
Acquisition of Moss Caves 67 (+/-) Acres in Skamania County, Mt St Helens Wildlife Area, near the Merrill Lake Unit



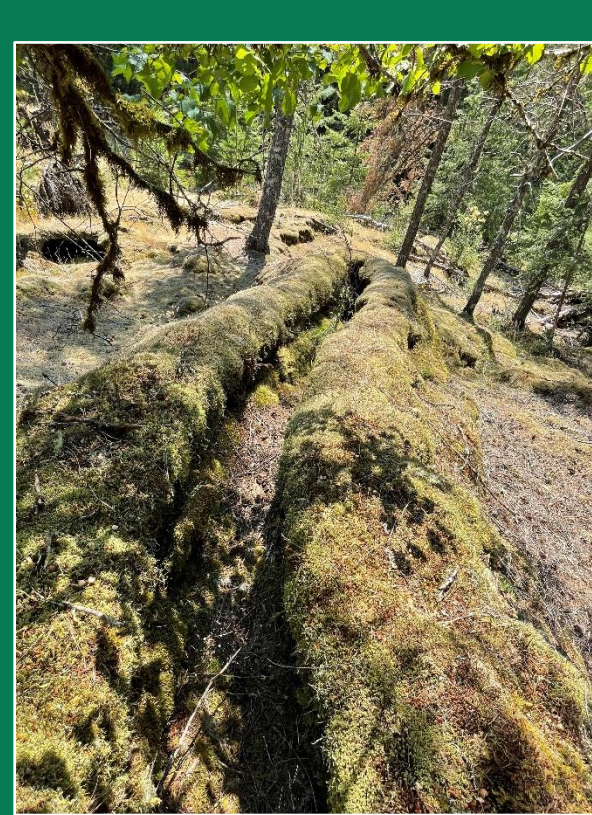
Acquisition of Moss Caves 67 (+/-) Acres in Skamania County, Mt St Helens Wildlife Area, near the Merrill Lake Unit



Acquisition of Moss Caves 67 (+/-) Acres in Skamania County, Mt St Helens Wildlife Area, near the Merrill Lake Unit



Acquisition of Moss Caves 67 (+/-) Acres in Skamania County, Mt St Helens Wildlife Area, near the Merrill Lake Unit



Questions



Acquisition of Wenas Black Canyon, 150(+/-) Acres in Yakima County, Region 3, Wenas Unit, Wenas Wildlife Area

