

# WDFW's Wildlife Diversity Division: Recovering At-Risk Wildlife

Hannah Anderson, Taylor Cotten, Janet Gorrell,  
Jenna Judge, Julia Smith, Jessica Stocking

Wildlife Diversity Division

9 August 2024



Washington  
Department of  
**FISH &  
WILDLIFE**



# Who is the Wildlife Diversity Division? And what do we do?

# Wildlife Diversity Division Focus

Lead efforts statewide to manage, conserve and recover Washington's nongame wildlife and play an active role in protecting and improving their habitats. Primary focus on SGCN.



Northern leopard frog. Photo by District 5 biologists.



Columbian Sharp-tailed Grouse. Photo by C. Lowe.



Fisher release as part of reintroduction effort

# Wildlife Diversity Division Main Functions

Conservation  
Planning

Implementing  
Recovery Actions

Producing  
Foundational  
Documents

Sharing Technical  
Expertise

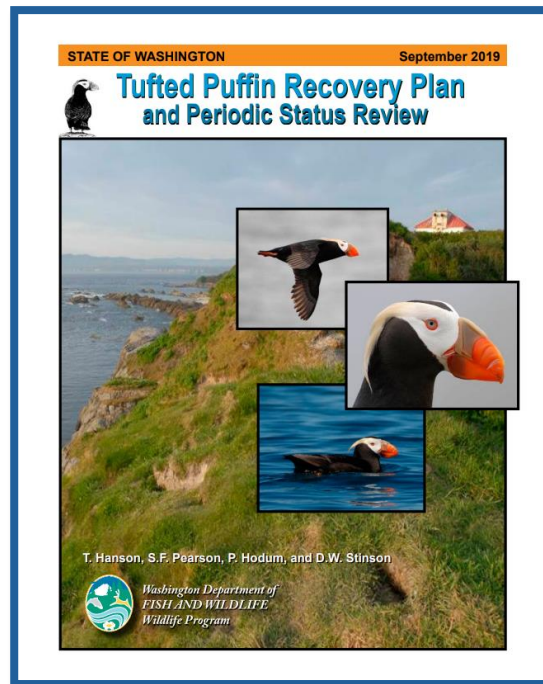
Surveying and  
Monitoring

Assessing Status

Providing  
Habitat Protection &  
Habitat Restoration  
Support



Biologist recording capture and disease data for a Northwest Pond Turtle. Photo: J. Smith



Tufted Puffin Recovery Plan and Periodic Status Review



Biologist surveying for Island Marble Butterfly. Photo: J. Combs



Soil preparation for restoration seeding. Photo: E. Munes

# Diversity Division Staffing Composition (23-25 BN)

Diversity Staff include:

- 34 Diversity Division HQ Staff
- 21 FTE Regional Biologists
  - Portion of 33 District Biologists (shared with Game Division)
  - 8 Regional Diversity Biologists

Significant additional support to accomplish Diversity objectives comes from:

- Wildlife Area Managers
- Private Lands Biologists
- Researchers and Data Stewards
- Communications and Public Engagement (CAPE)
- Habitat Program

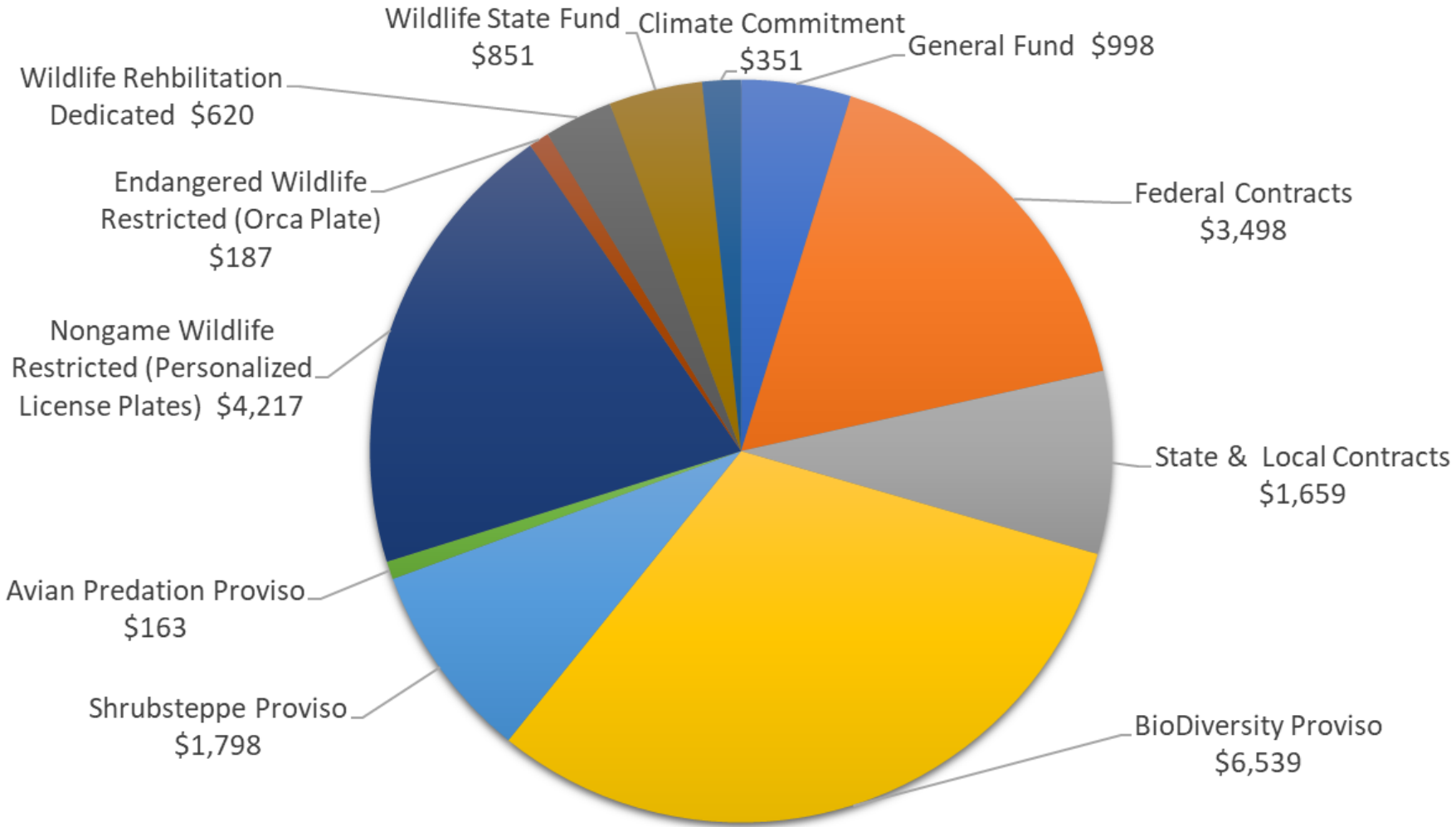


Wildlife Diversity Division Headquarters Staff

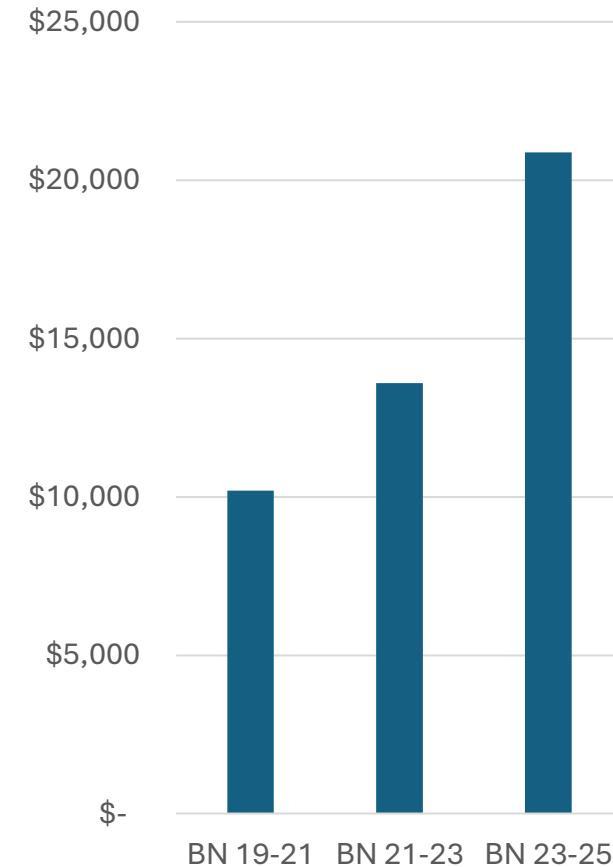


Region 5 District Biologists with Northwestern Pond Turtle

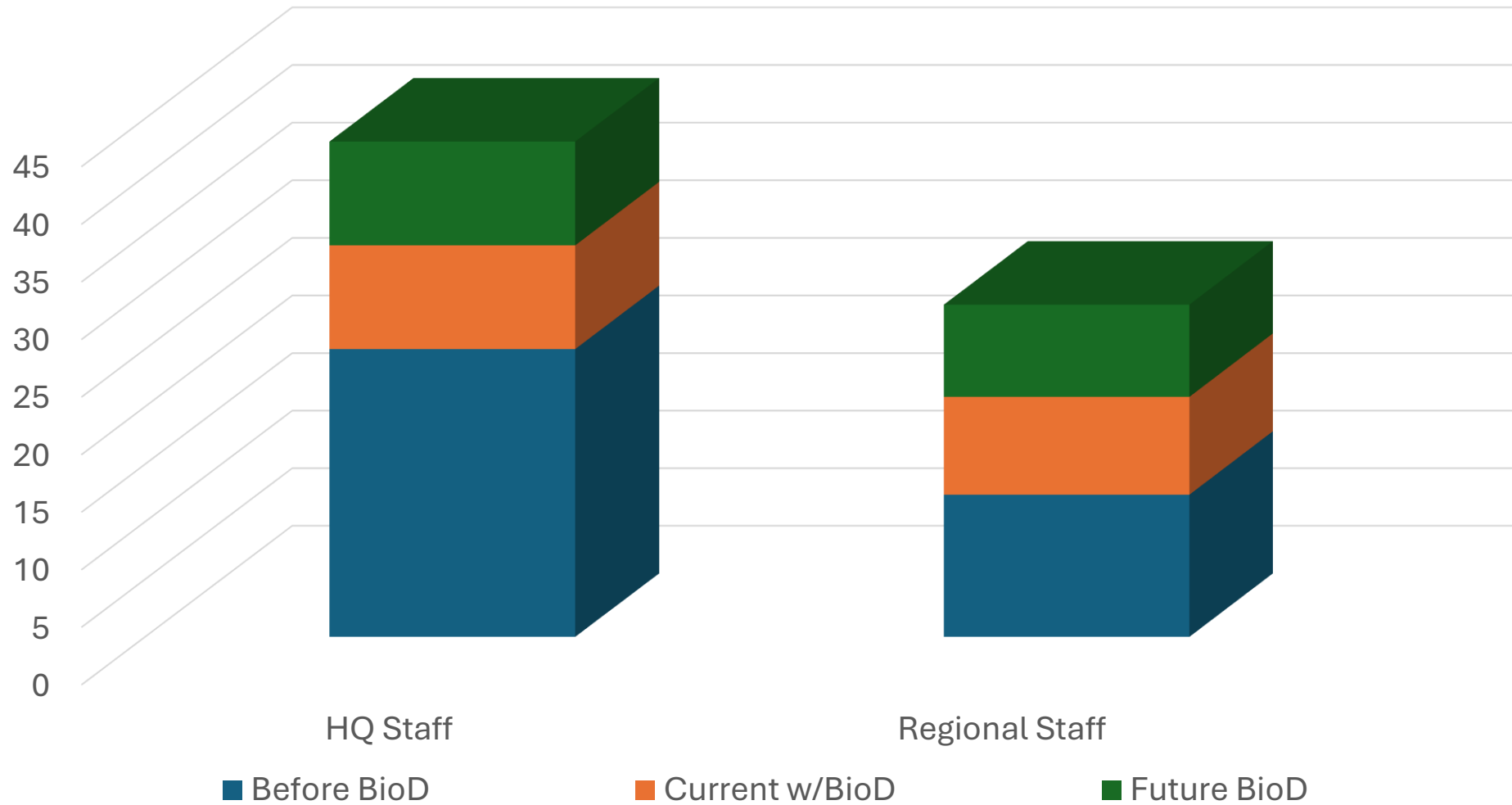
# Wildlife Diversity Funding Sources 23-25BN (in thousands)



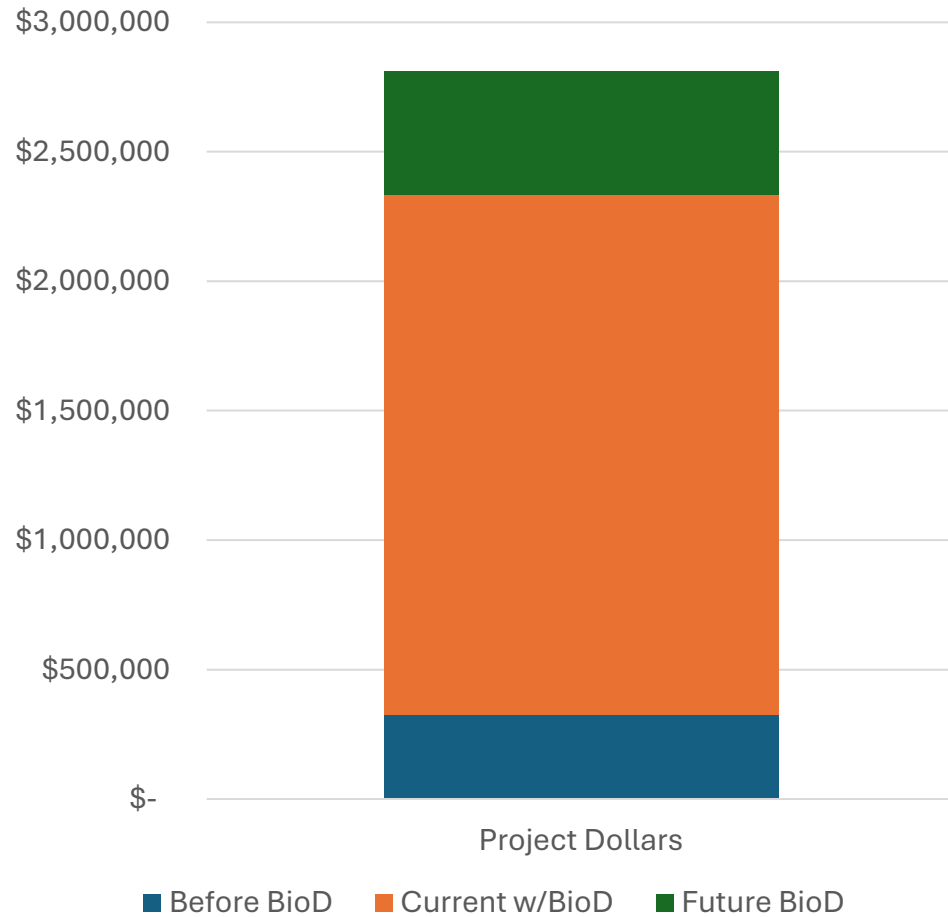
Diversity Division Control Totals  
BN 19-21 through 23-25



# Biodiversity Investments – Diversity Division Staff



# Biodiversity Investments – Diversity Division Flexible Project Dollars



WSU study: jackrabbit seasonal movements and use of vegetation communities.





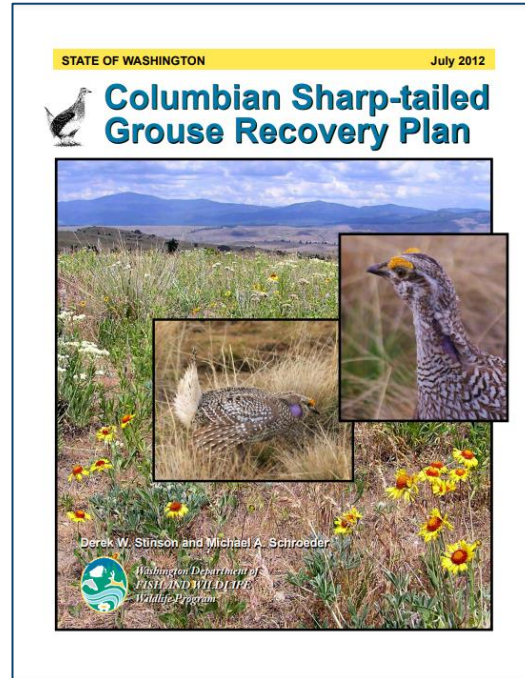
# Wildlife Diversity Division Sections

# Endangered Species Recovery

Planning and implementing recovery actions for state and federally listed wildlife



Partnering on USFWS Recovery Plans



WDFW Recovery Plan



Columbia basin pygmy rabbit



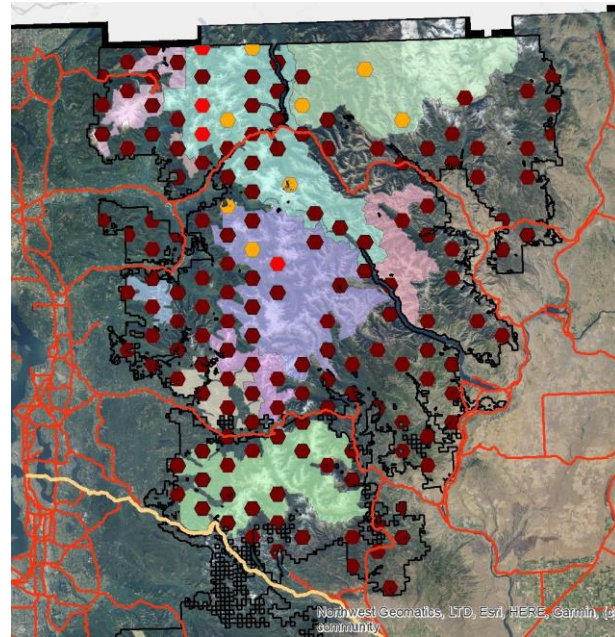
Northwestern pond turtle wild recruit

# Conservation Assessment

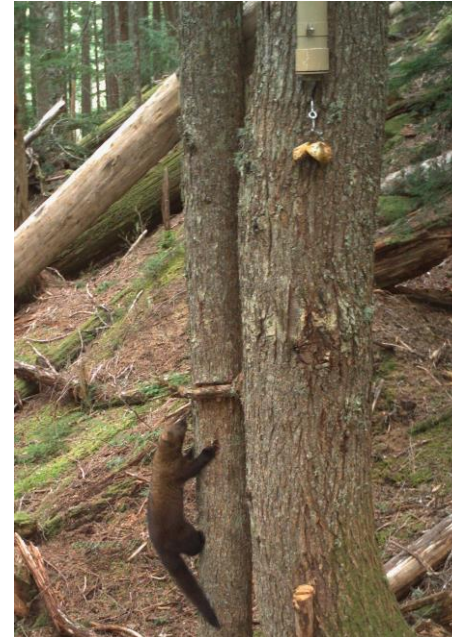
Survey and monitoring activities that are focused on a variety of objectives – detection methods, distribution, occupancy, abundance, trend monitoring, efficacy of recovery action, status assessment



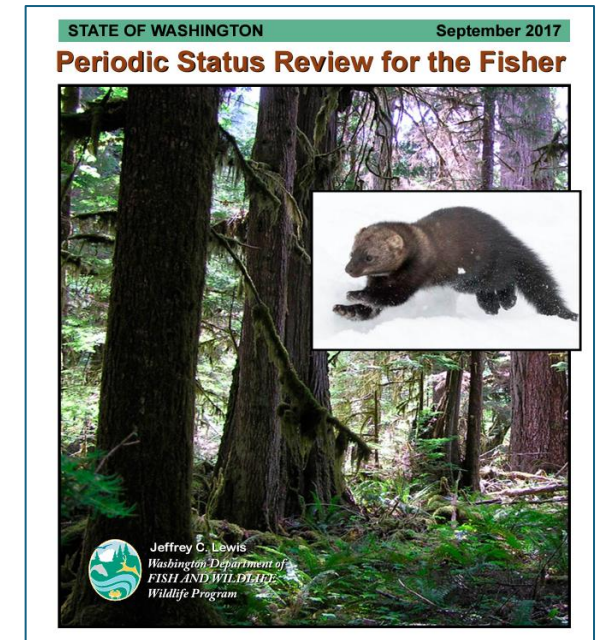
Fisher release; reintroduction effort



Cells for fisher camera trap monitoring in north cascades.



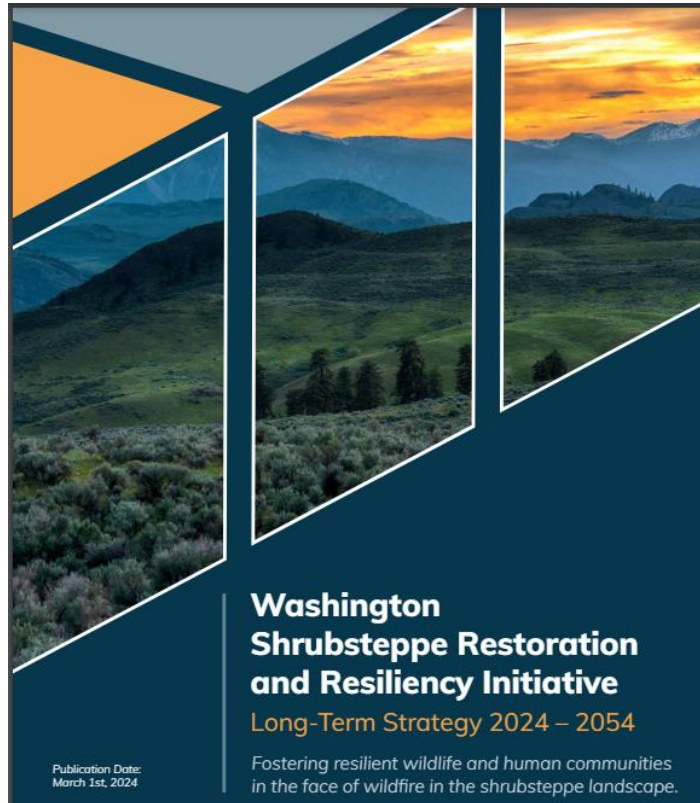
Fisher detection at camera trap with scent dispenser.



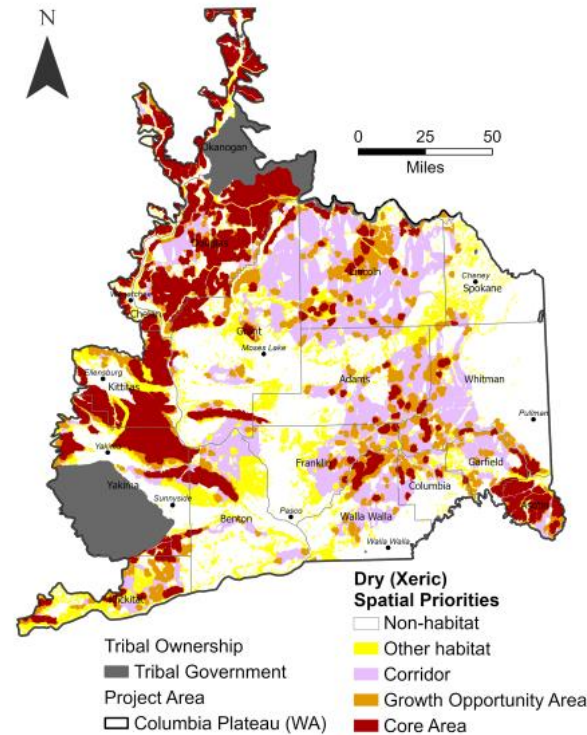
Periodic Status Review

# Landscape Conservation

Partner to protect, restore, and connect landscapes for SGCN



WSRRI Strategy



WSRRI Xeric Spatial Priorities



Shrubsteppe Habitat. Photo: J. Haug

# Marine, Coast, Flyway

Created a focused section to enhance Diversity's engagement in this space.



Orca. Photo: D. Aubert



Western Snowy Plover



Caspian Tern. Photo: S. Pearson

# Permitting

## Wildlife Rehabilitation



Laysan Albatross released after rehab at PAWS

## Falconry



Falconer with Harris's Hawk

## Scientific Collection



Streaked Horned Lark banded by Ecostudies Institute.  
Photo: Ecostudies Institute



# Case Study – South Sound Prairies

# Endangered Species Recovery and Landscape Conservation of South Sound Prairies

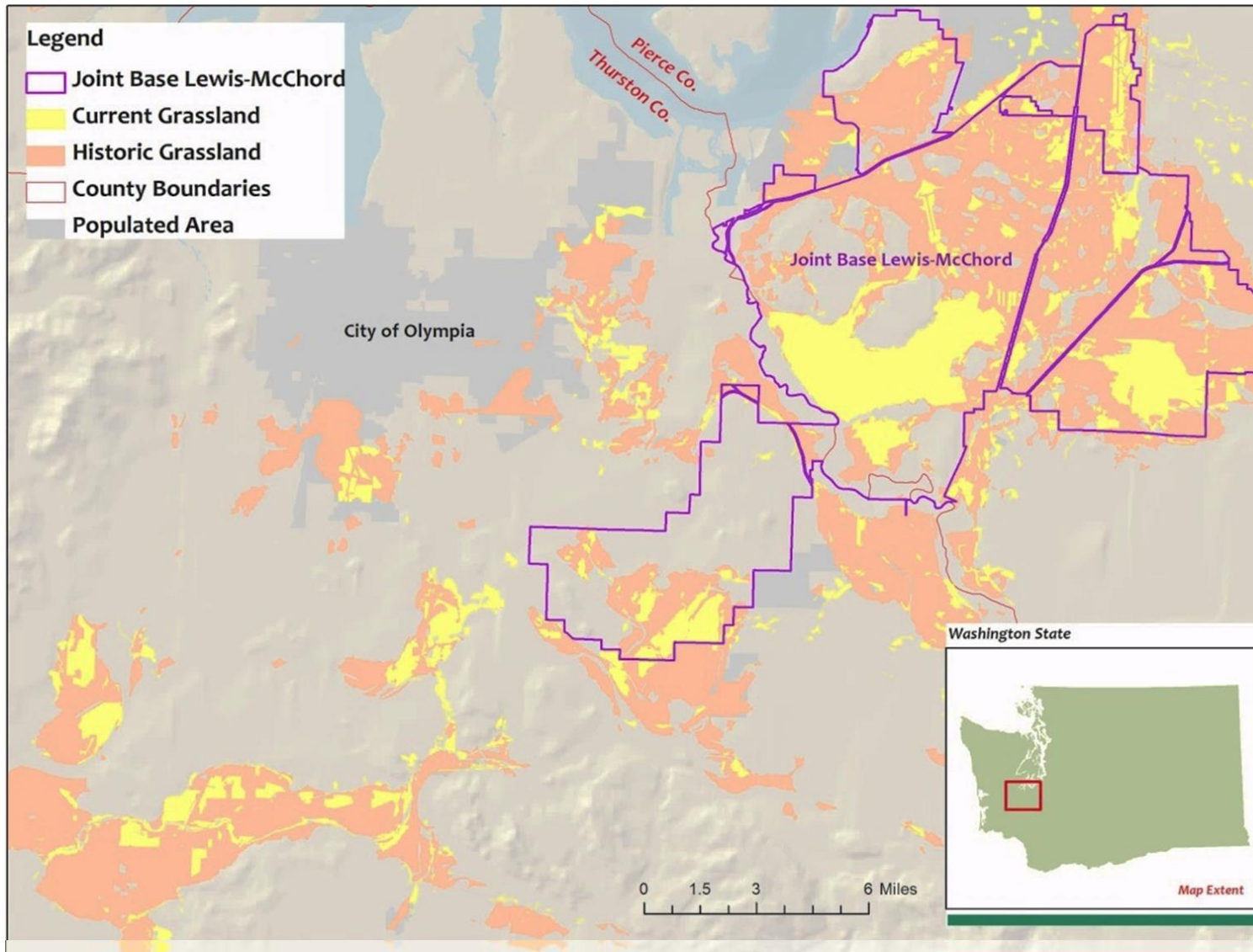


Violet Prairie Unit – Scatter Creek Wildlife Area. Photo by C. Rolls



# South Sound Prairie Background

- 90% lost to conversion and degradation
- Most high-quality habitat and many species populations occur on JBLM



Historic and current grasslands in South Puget Sound

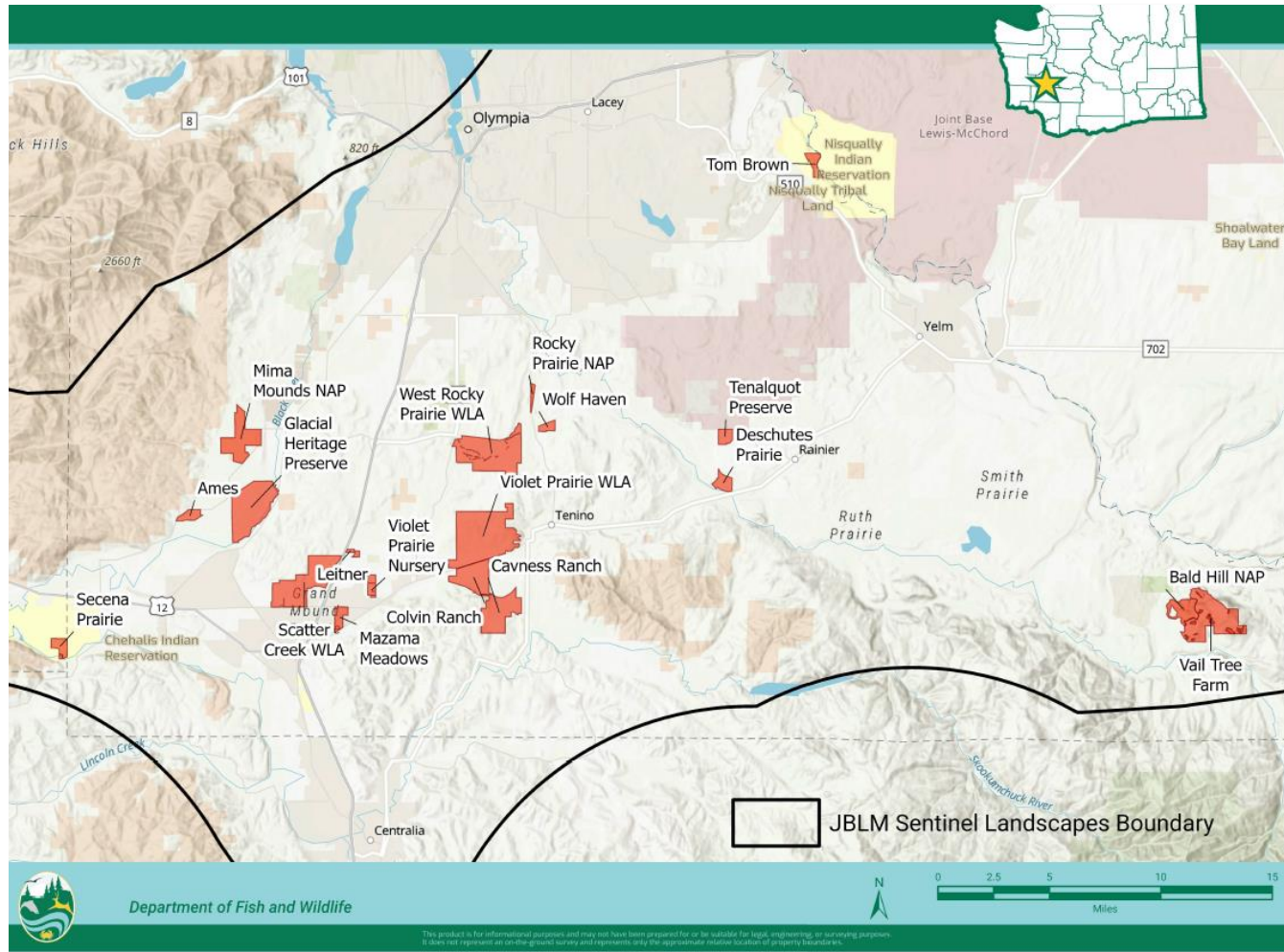
# South Sound Prairies: JBLM Sentinel Landscape



NISQUALLY INDIAN TRIBE



# South Sound Prairies – Habitat Protection



Prairie lands in conservation status. Credit: E. Munes.



Collaborative acquisition project. Violet Prairie Unit – Scatter Creek Wildlife Area. Photo: C. Rolls.

# South Sound Prairies – Habitat Restoration



CNLM nursery and plant plug production



Prescribed fire and WCC Crews planting plugs

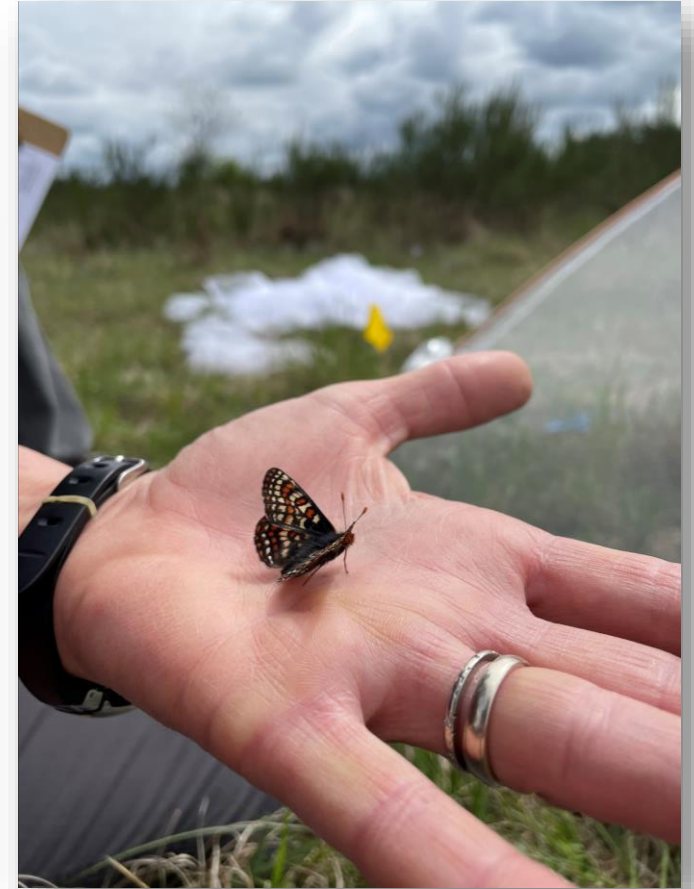


Post-burn blooms and checkerspot butterfly



# South Sound Prairies – Species Population Recovery

Taylor's checkerspot  
butterfly  
(State endangered 2006,  
federally endangered 2016)



# South Sound Prairie Species Population Assessments

Assess population distribution, abundance, and trajectory toward meeting recovery objectives



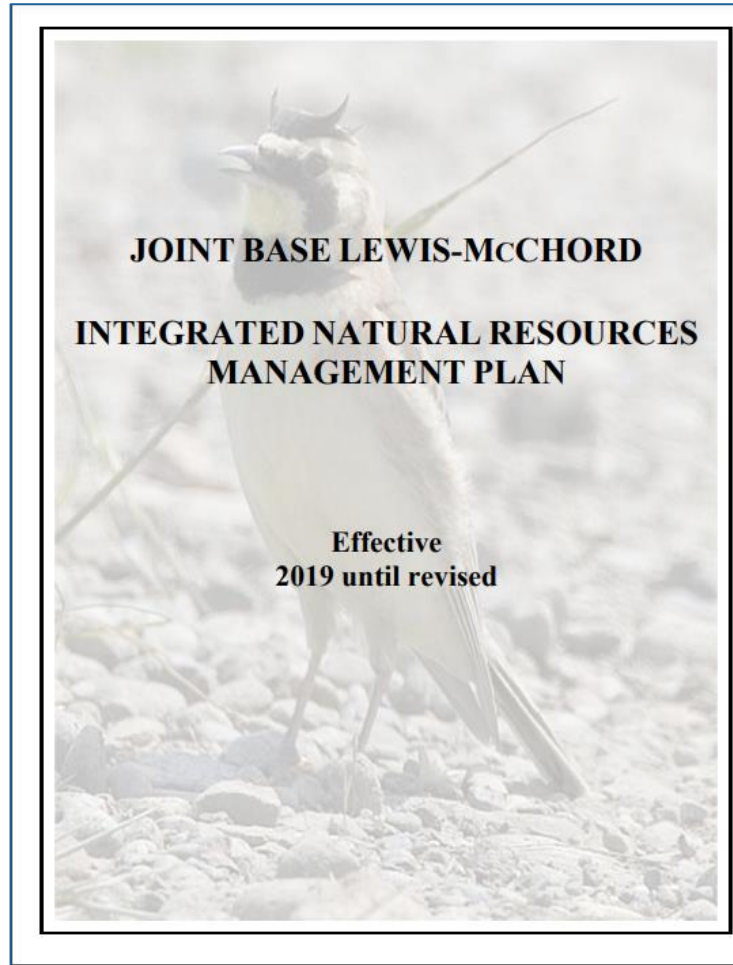
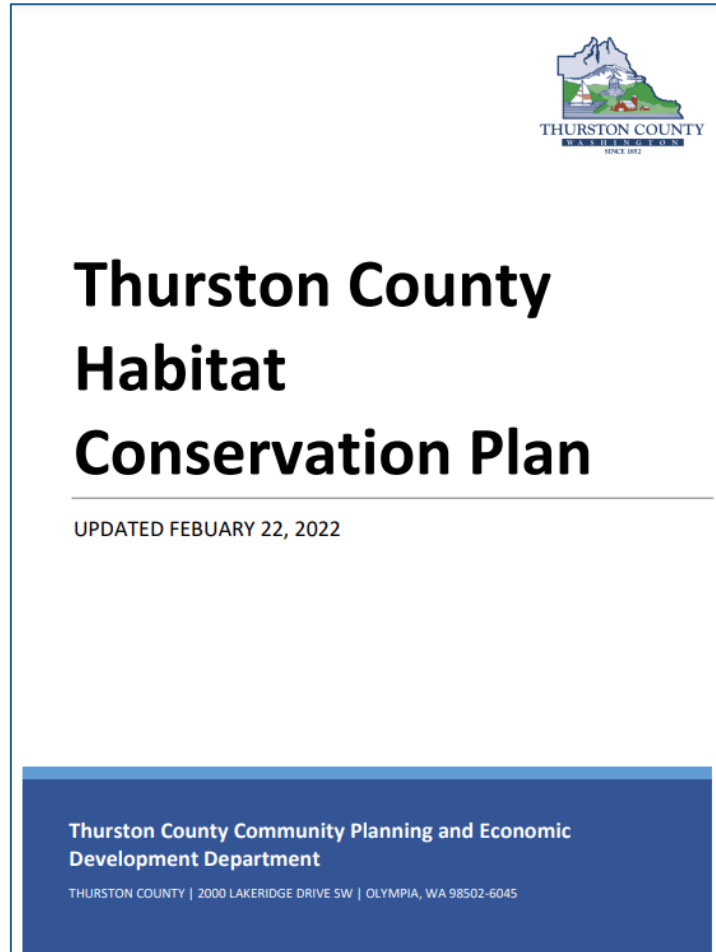
Mazama Pocket Gopher and Mound



Regional biologist monitoring Mazama Pocket Gophers following mound transect protocol



# South Sound Prairies – WDFW Technical Support



Collaborate to share best available science

- HCPs
- INRMP
- Land use proposals

# Recovery of Endangered Prairie Species is in Sight



Scatter Creek Wildlife Area – Taylor’s Checkerspot Habitat Enhancement Area. Photo by M. Linders



# Summary and Questions



Washington Ground Squirrel. Photo: J. Abel