

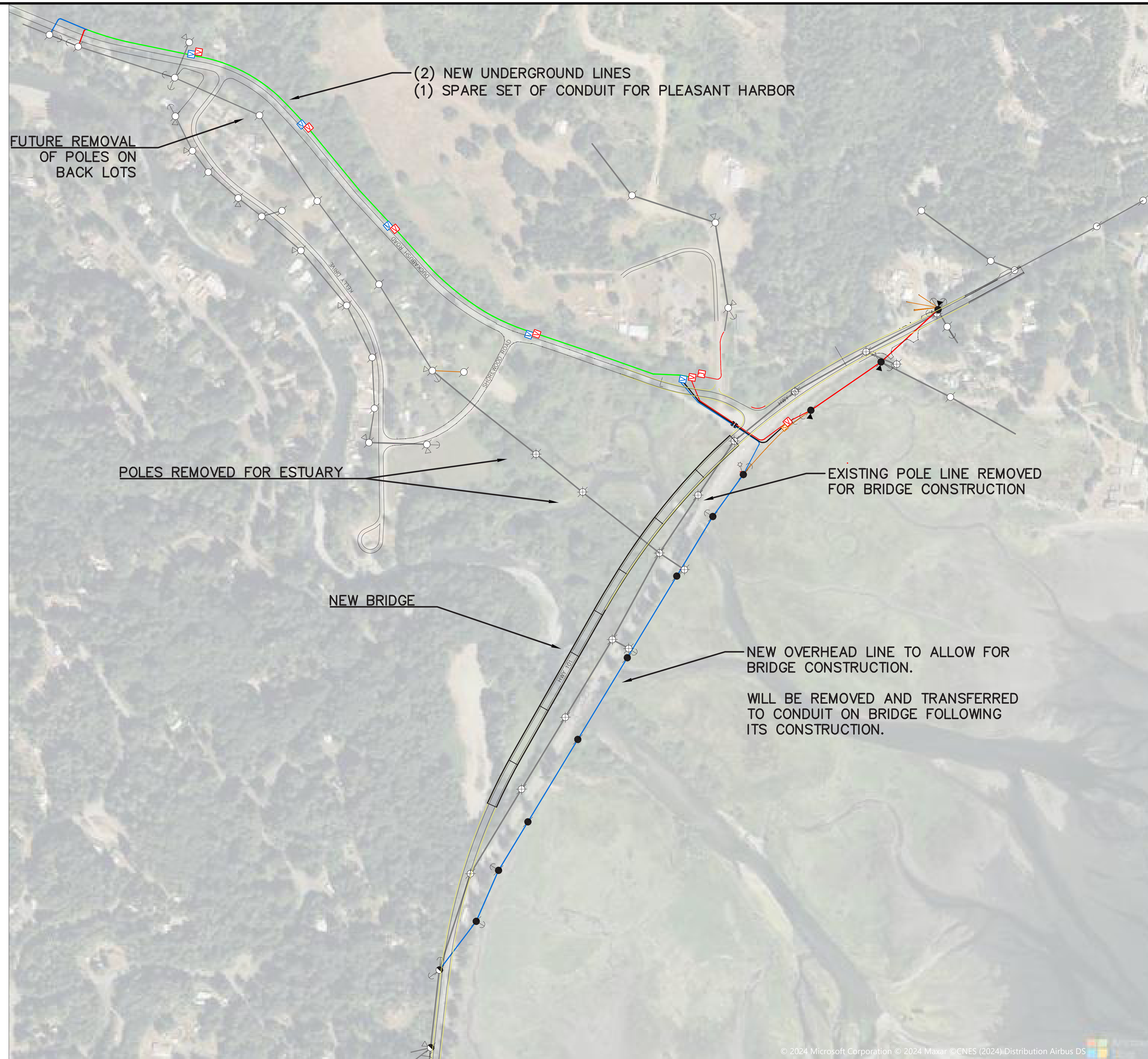
UTILITIES RELOCATION

ABBREVIATIONS

OH:	OVERHEAD
UG:	UNDERGROUND
DE:	DEADEND
DDE:	DOUBLE DEADEND
XFMR:	TRANSFORMER
GOS:	GROUP OPERATED SWITCH
SEC:	SECONDARY
PRI:	PRIMARY
ANC:	ANCHOR
TAN:	TANGENT
DBL:	DOUBLE
CKT:	CIRCUIT

SYMBOL LEGEND

●	POLE NEW
◐	POLE REPLACE
○	POLE EXISTING
⊗	POLE REMOVE
V	UG VAULT
J	UG J-BOX/CABINET
T	UG TEMP CABINET (X DENOTES REMOVAL)
S	UG SEC PEDESTAL
⤴	GUY & ANCHOR
▲	OH XFMR NEW
▼	OH XFMR REPLACE
▽	OH XFMR EXISTING
▽	OH XFMR REMOVE
T	CONDUIT STUB
—	UG 3Ø NEW DBL CRK
—	UG 3Ø NEW NORTH FEEDER
—	UG 3Ø NEW SOUTH FEEDER
—	OH 3Ø NEW NORTH FEEDER
—	OH 3Ø NEW SOUTH FEEDER
—	UG 1Ø NEW NORTH FEEDER
—	UG 1Ø NEW SOUTH FEEDER
—	OH 1Ø NEW NORTH FEEDER
—	OH 1Ø NEW SOUTH FEEDER
—	UG SEC NEW
—	OH SEC NEW
—	UG 3Ø PRI EXISTING
—	UG 1Ø PRI EXISTING
—	OH PRI EXISTING
—	OH SEC EXISTING
—	OH SEC EXISTING
—	OH AND UG REMOVALS



DESIGNER	
REVISION DESCRIPTION	
REV	DATE
PRELIMINARY	
DUCKABUSH ESTUARY LINE RELOCATION PROJECT OVERVIEW	
CURRENT REVISION: A	WORK ORDER #:
OV	
1 1	

S:\03 PROJECTS\2022 PROJECTS\Duckabush Estuary Line Relocation\Design\AUTOCAD\Duckabush Line Relocation overview.dwg, Jeremiah Waugh, 4/26/2024 7:10 AM