

Region 3 Updates

Mike Livingston

Regional Director, South Central Region

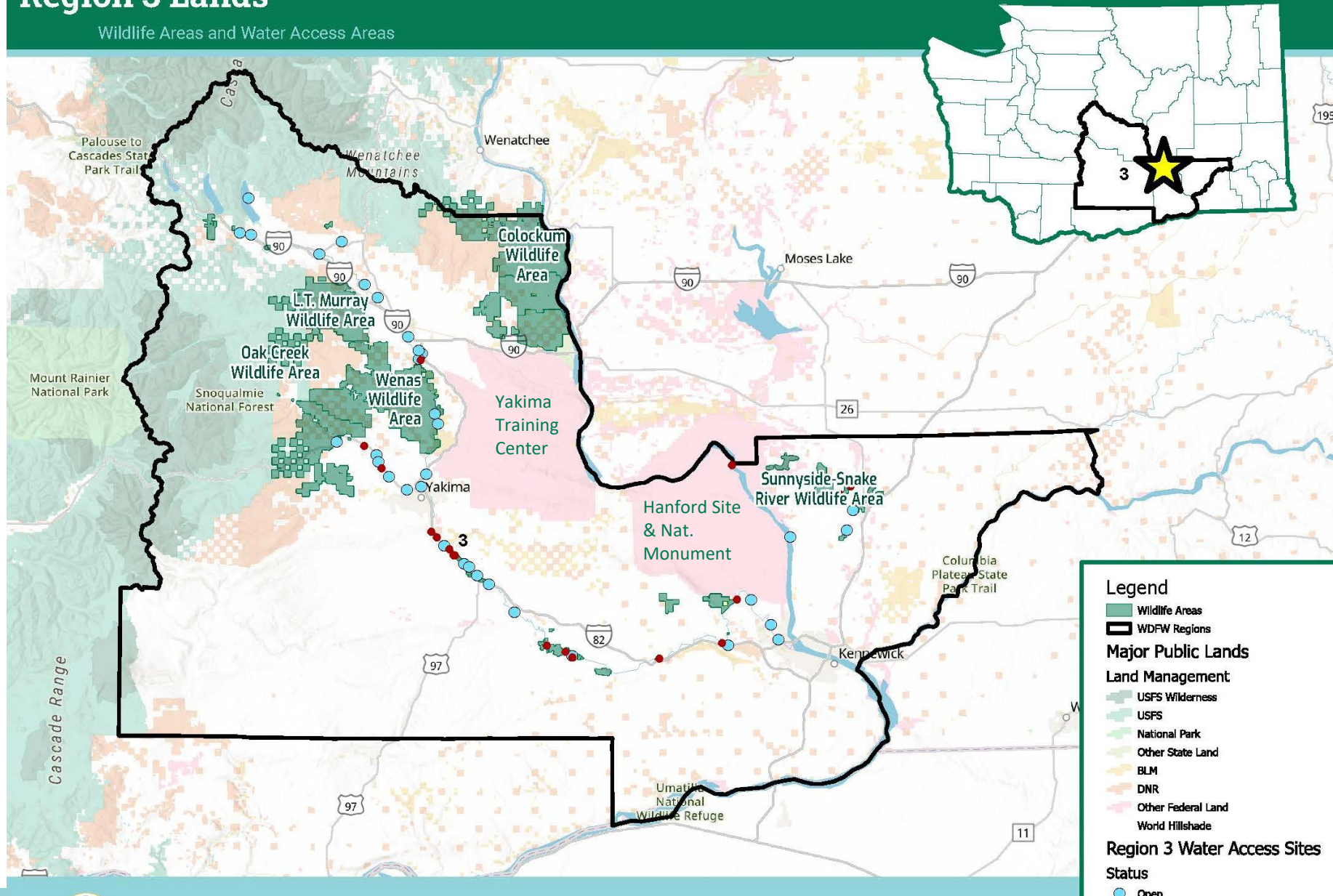
October 25, 2024



Washington
Department of
**FISH &
WILDLIFE**

Region 3 Lands

Wildlife Areas and Water Access Areas





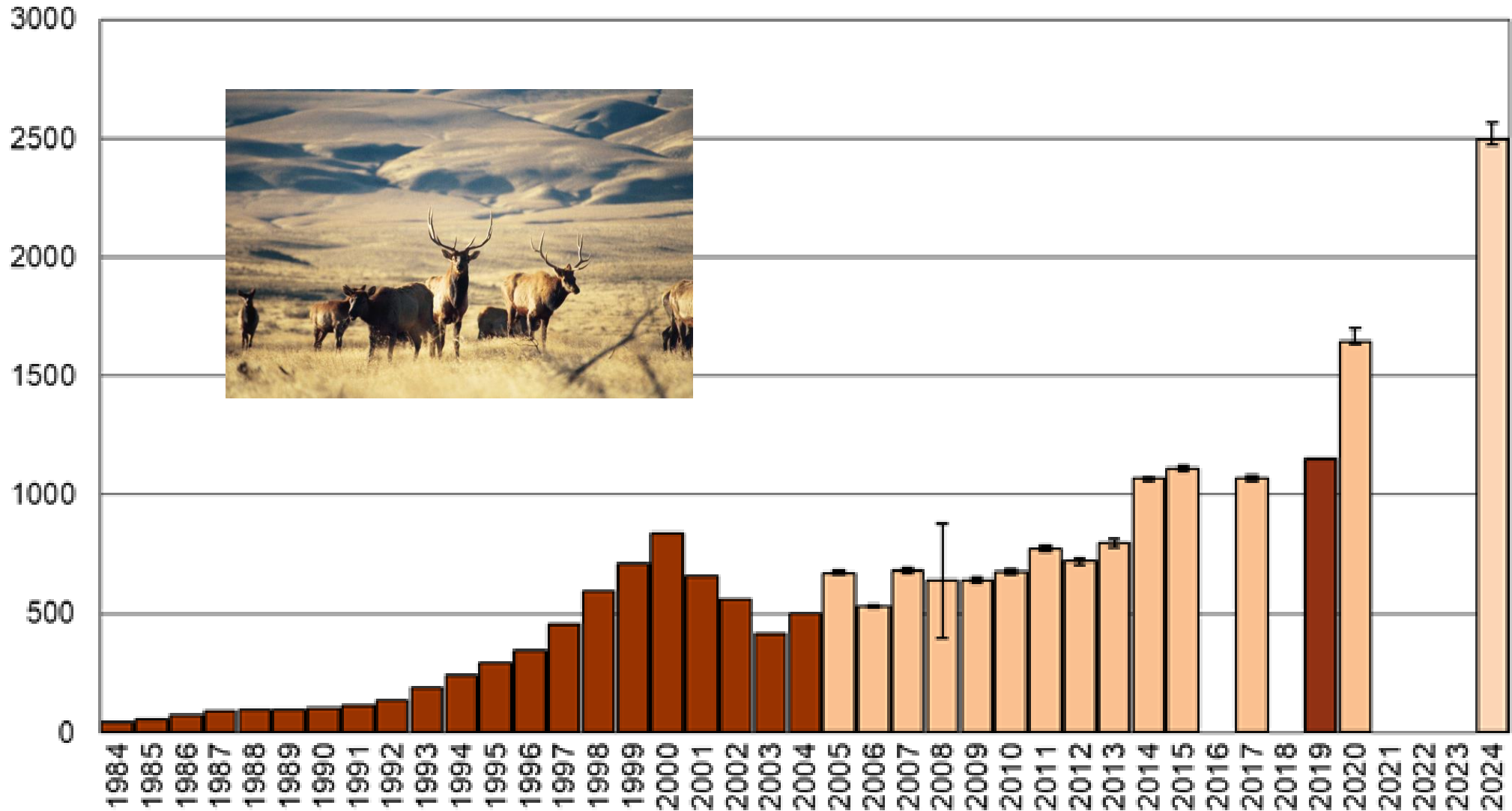
Wildlife management

Region 3 Elk Herd Status

- Yakima Herd (south of I-90)
approximately 10,500
- Colockum Herd (north of I-90)
Approximately 4,000



Rattlesnake Hills (Hanford) Elk Herd



Senate Bill 5784



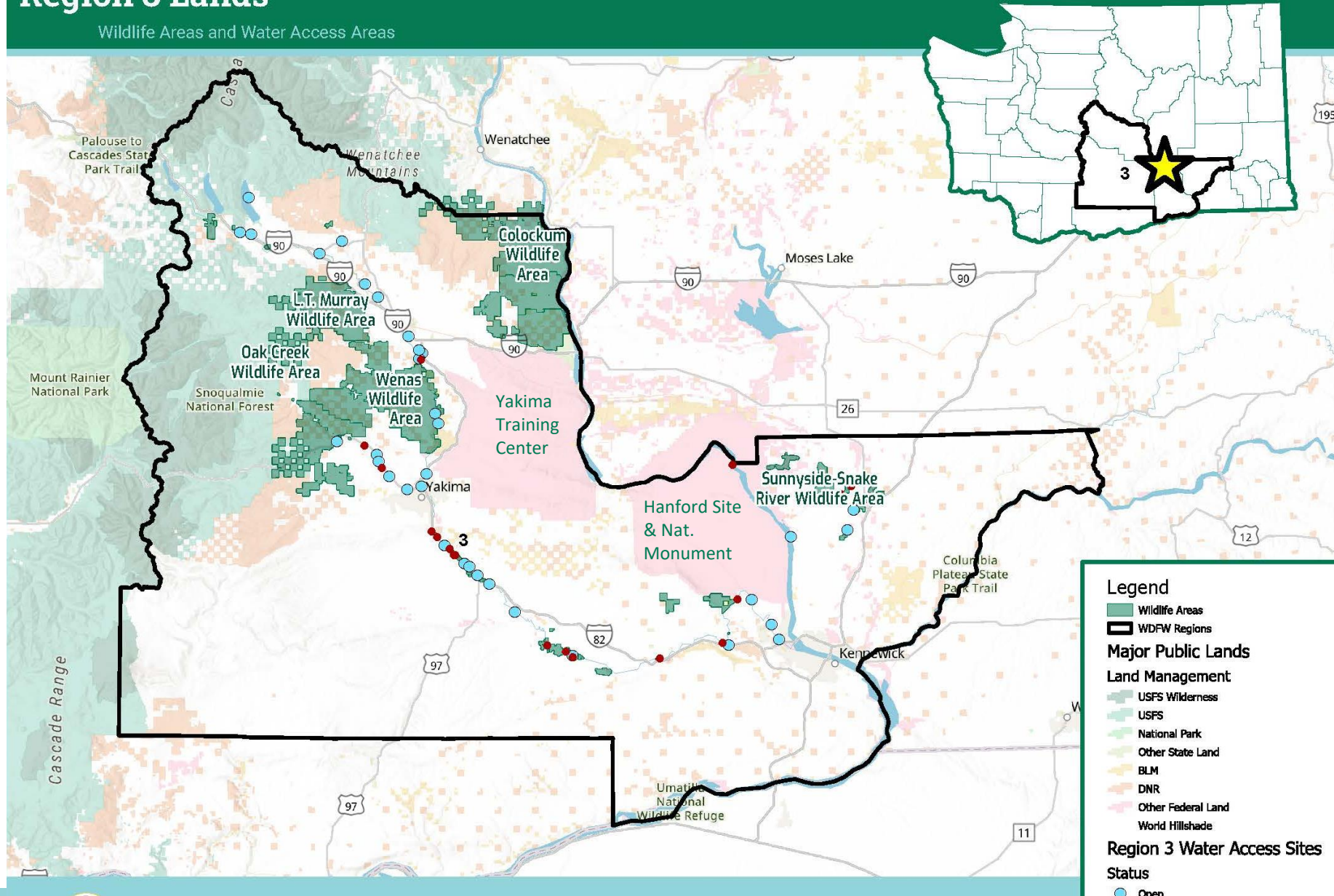
• Photo by WDFW



Land Management

Region 3 Lands

Wildlife Areas and Water Access Areas



Wildfires on Wenas Wildlife Area

Wenas WLA fires totaled over 10,000 acres this year



Photos by WDFW

Rimrock Retreat fire – Hwy 12 – Tieton River





Capital & Asset Management Program – Yakima Construction Shop

Fish Screens



Durr Road Shooting Range

Wenas Wildlife Area



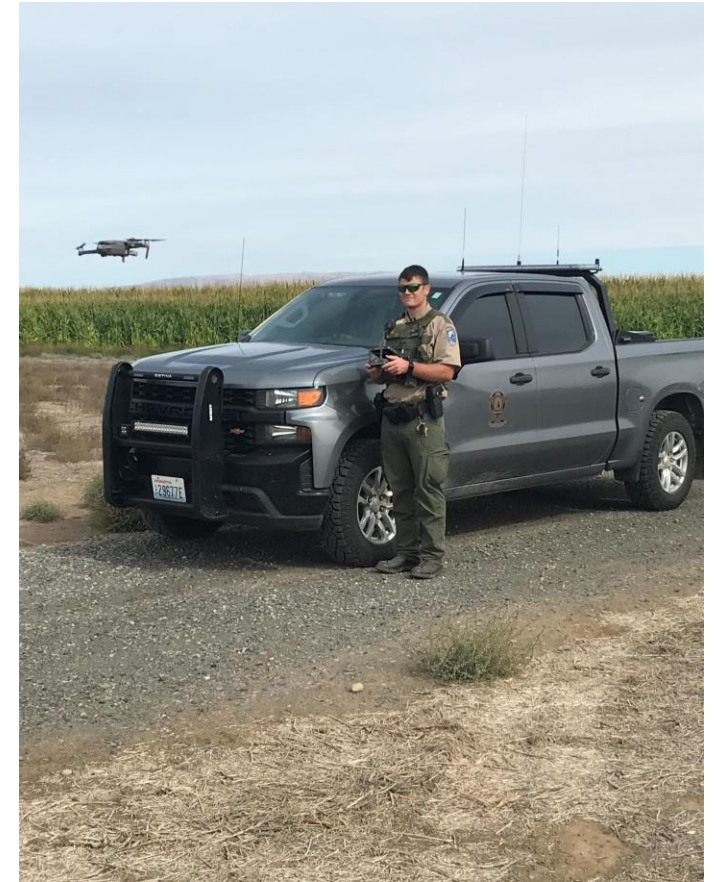
Photos by WDFW



Enforcement

Public lands

- WDFW lands, DNR and federal lands, cooperative agreements
- Protection through a variety of patrol methods



Land use challenges



CLOSED
FOR THE SEASON

**Lands behind this
sign CLOSED to public
access to protect
wintering wildlife**

Closes: December 15th
Opens: May 1st, 6 am

**Violations will be enforced under
RCW 77.15 and WAC 220-500**



Wildlife protection

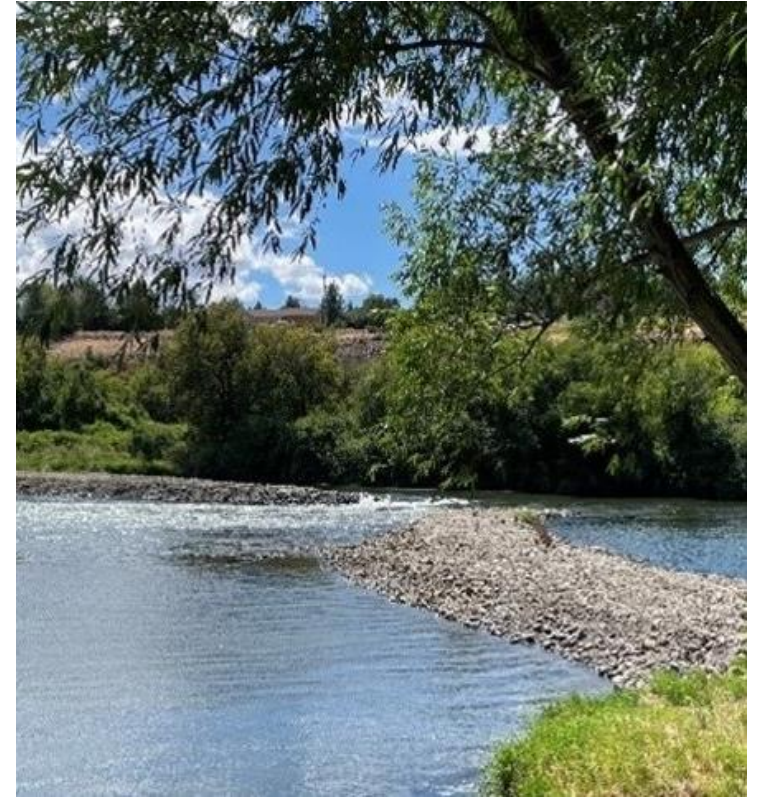


Major river systems

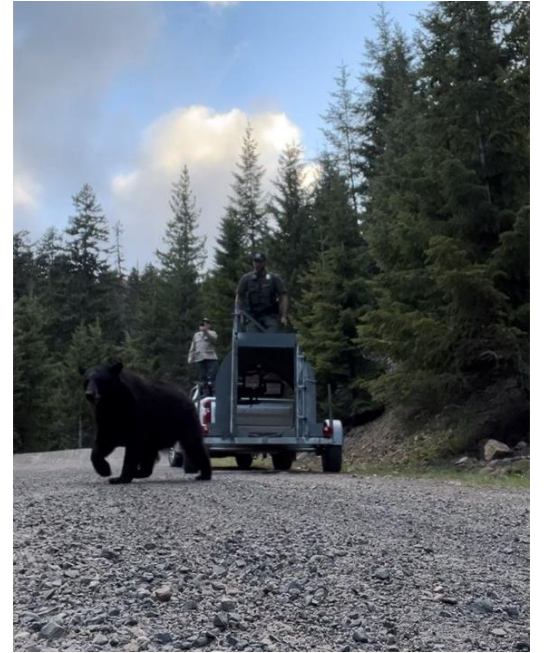
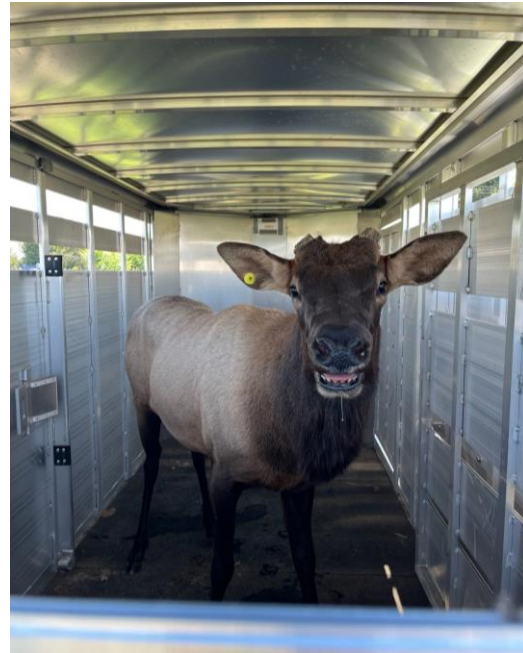
- Columbia River
- Yakima River
- Snake River



Fisheries and habitat violations



Wildlife conflict



Public engagement



Public safety





Fish Management

Hanford Reach fall Chinook salmon “Adult Broodstock Collection” (formerly “King of the Reach” derby)



Summer 2024

Drought and Heat



Klickitat Hatchery Update



PLEASE JOIN US FOR THE
GROUNDBREAKING CEREMONY
OF THE

Klickitat Hatchery

FRIDAY, OCT. 11, 2024 10:00AM - 2:00PM

KLICKITAT HATCHERY
301 FISH HATCHERY ROAD
GLENWOOD, WA 98619

The graphic features a central aerial rendering of the hatchery facility, which includes several large rectangular tanks and a main building. The text is framed by decorative diamond patterns at the top and bottom. Logos for the Bonneville region, the state of Washington, and the Washington Department of Fish and Wildlife are displayed at the bottom.





Regional safety

A culture of commitment

- A culture change with a commitment focus
- We are committed to providing a safe work environment and committed to each other
- This drives us to do the right thing because we care about each other, not just to avoid noncompliance
- We are implementing a program in which ALL WDFW employees are represented by a safety committee
- We are sharing best practices, raising concerns, and staying current on WDFW policies, programs and procedures
- Region 3 has a dedicated Safety Professional



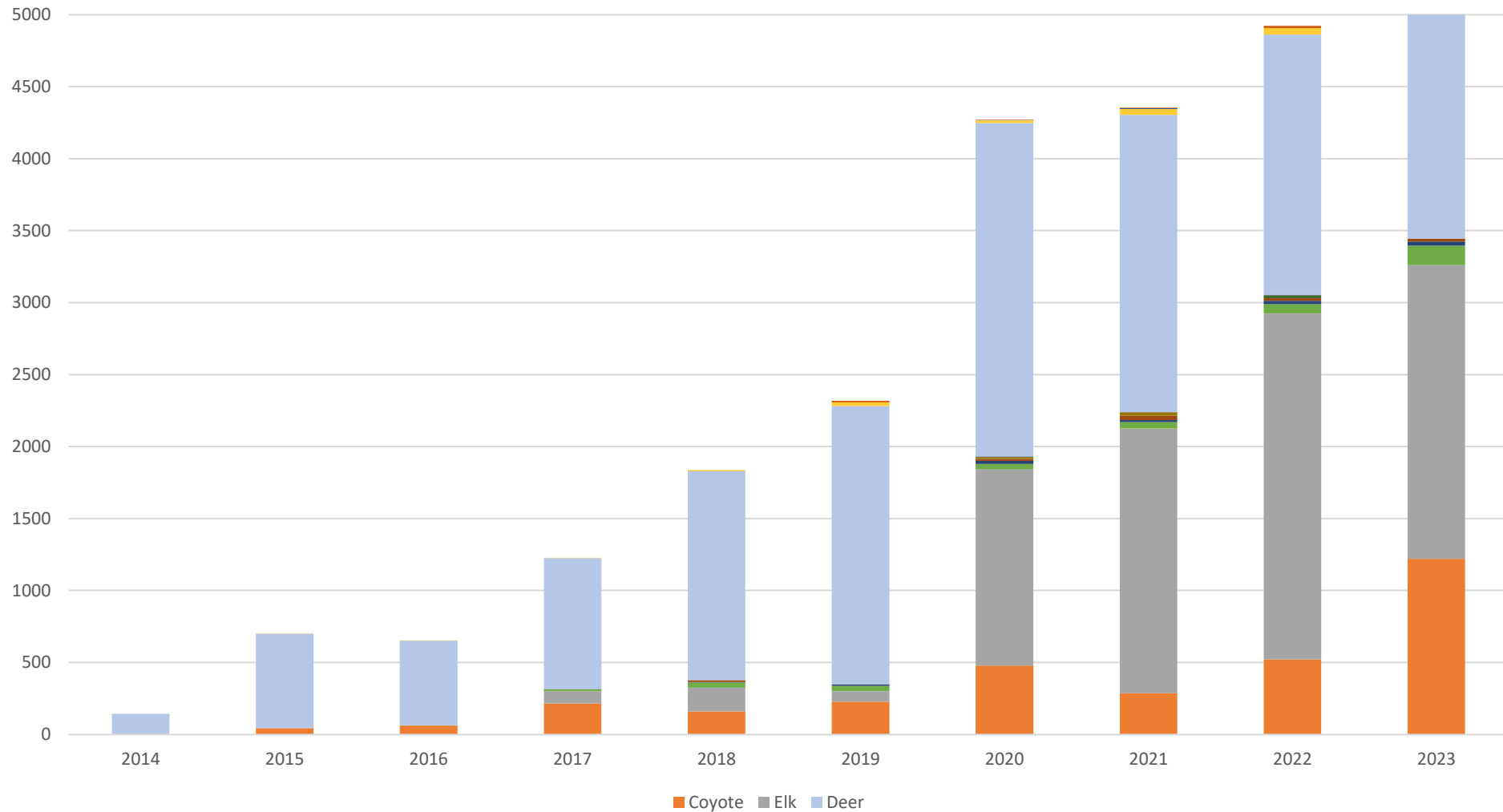


Habitat management

I-90 Snoqualmie Pass wildlife over/under pass project



Wildlife Crossings at New I-90 Structures by Species and Year



Wildlife Crossings at New I-90 Structures by Species and Year

Year	Moose	Beaver	Coyote	Elk	Opossum	Porcupine	Hare	Otter	Bobcat	Marten	Marmot	Fisher	Skunk	Mink	Deer	Muskrat	Raccoon	Cougar	Badger	Bear	Weasel	Total	
2014			4												140								144
2015			43												656		3						702
2016			61				3								587		3						654
2017			215	86			12		1					1	910		1						1226
2018			160	166			35	3	13						1451	1	8						1837
2019		1	228	71		1	37	9		3					1933		25				10	2318	
2020		16	479	1364			37	21	12		14	1	1		2319		18	1			4	4287	
2021		43	286	1838	1		44	15	28	2	23		2		2065		44		1	1	5	4398	
2022	1	65	521	2401	1	1	65	23	18				21	1	1810		44				15	4987	
2023		1	1219	2041			136	28	19					1	1654		56	5			3	5163	
Total	1	126	3216	7967	2	2	369	99	91	5	37	1	25	2	13525	1	202	6	1	1	37	25716	

River otter at Price Creek, November 2023



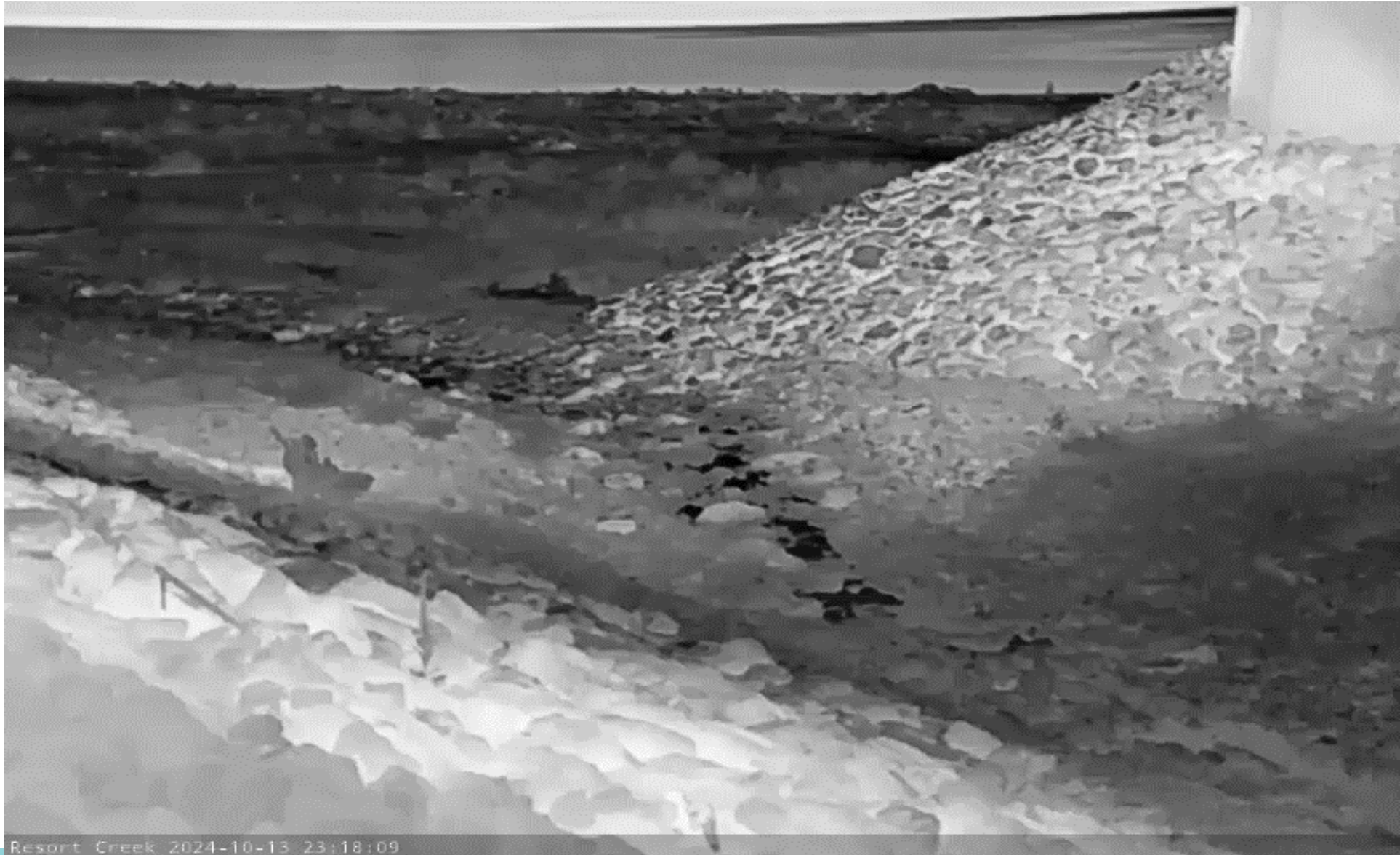
Bobcat at Price Creek, January 2024



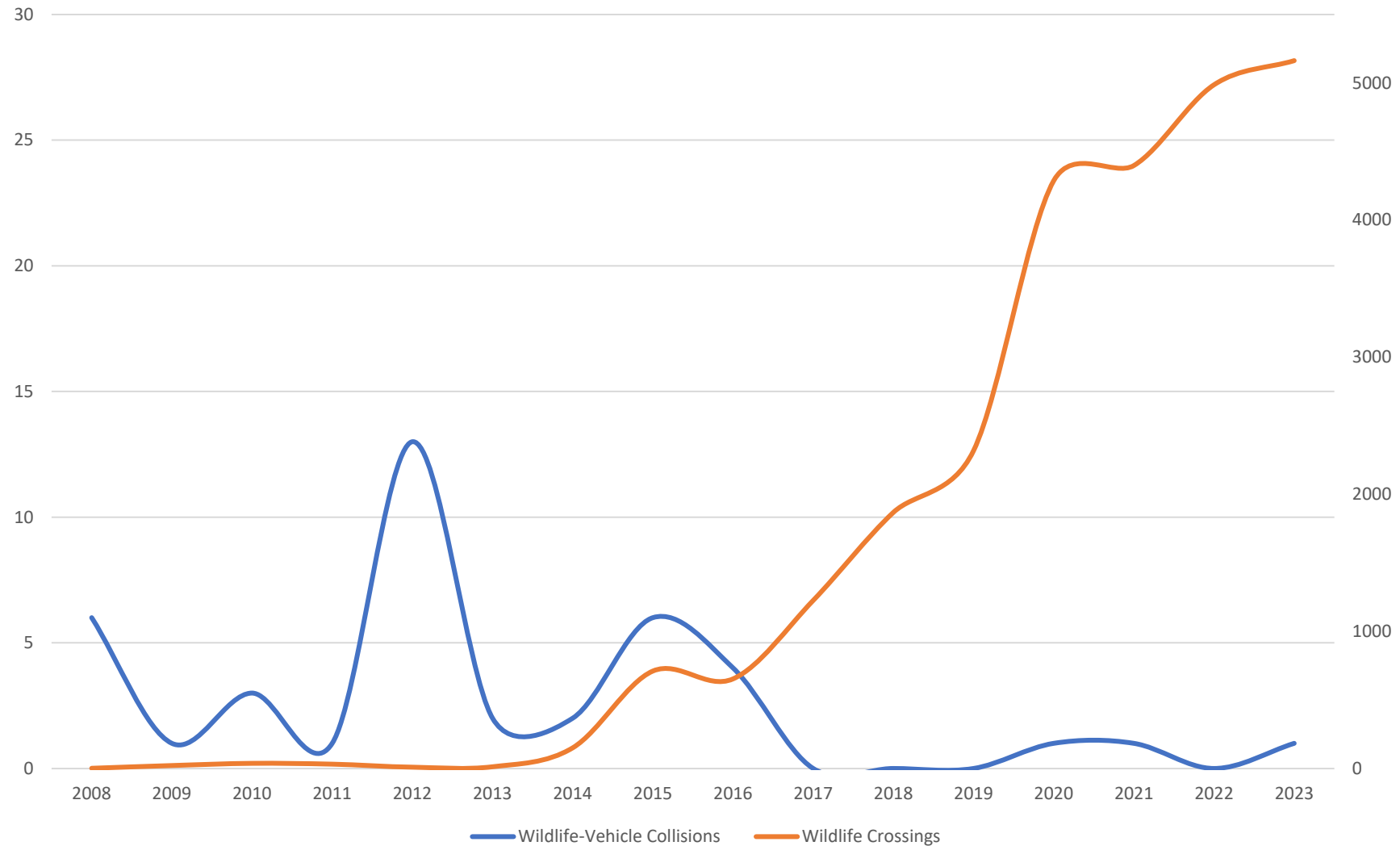
Western toad at Price Creek, July 2024



Pine Martin at Resort Creek, October 2024



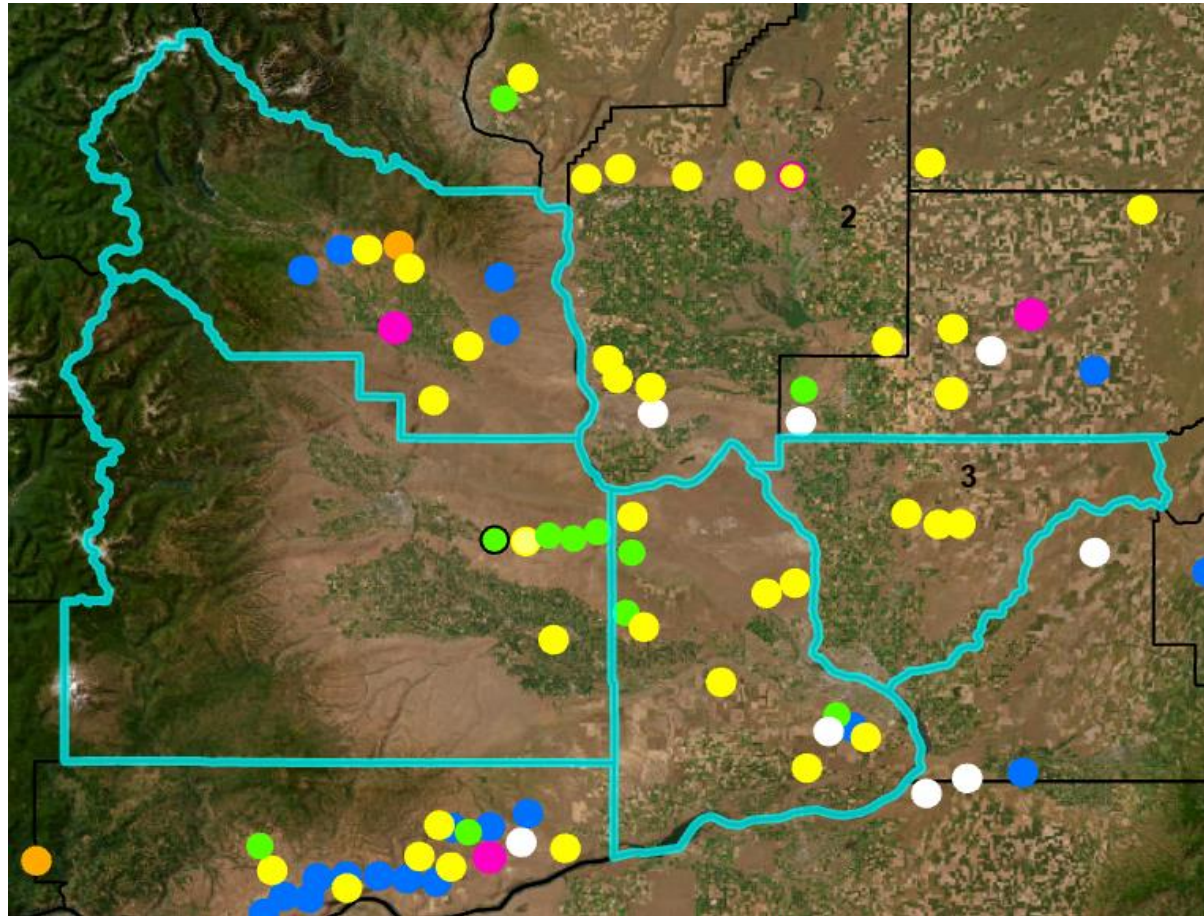
2008-2023 Phases 1 & 2 WVCs vs. I-90 Wildlife Crossings



Renewable Energy projects



27% (31/115) of state-wide solar and wind projects are in Region 3



Wind

- Operational
- Proposed
- Permitted

Solar

- Proposed/
- Pre-permitting
- Operational
- Under construction





Outreach and recruitment

Region 3 Fish & Wildlife 2024 summer intern

Krystal Flores



Regional Pathway to the Top Career & College Expo



LaSalle High School Interns





Yakima Basin Integrated Plan



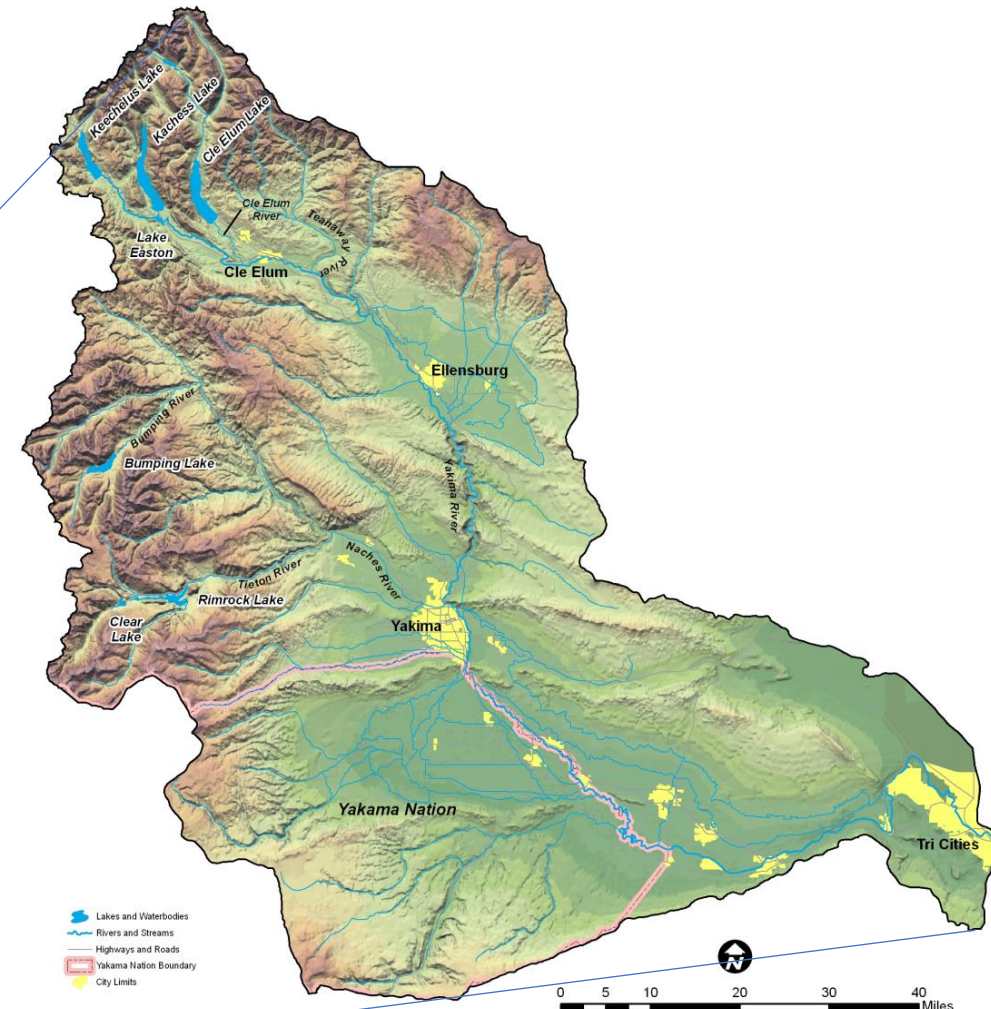
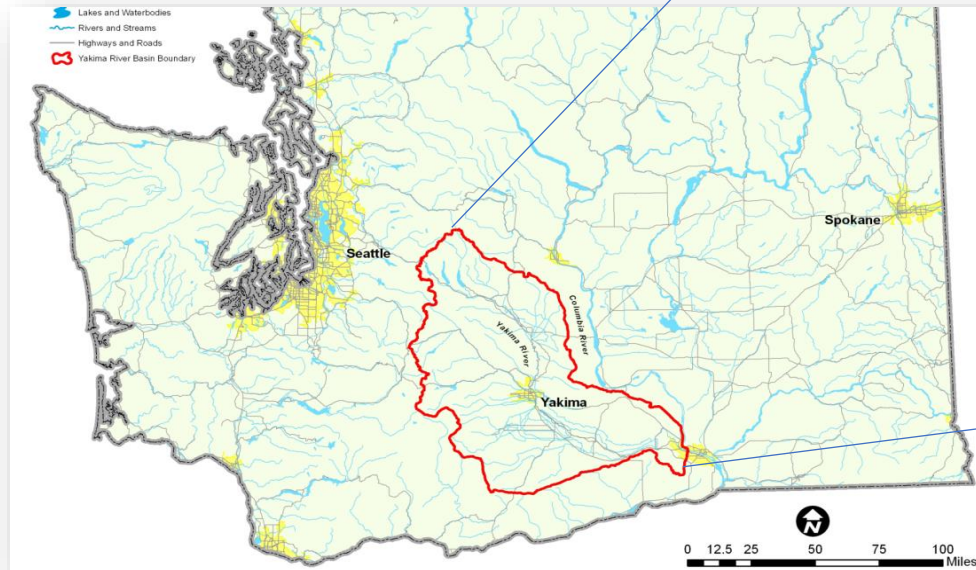
Yakima Basin

Basin size: 6,155 square miles

Population: 360,000

\$4.5 billion agriculture economy

Historically, second only to Snake River in supporting Columbia Basin salmon and steelhead runs

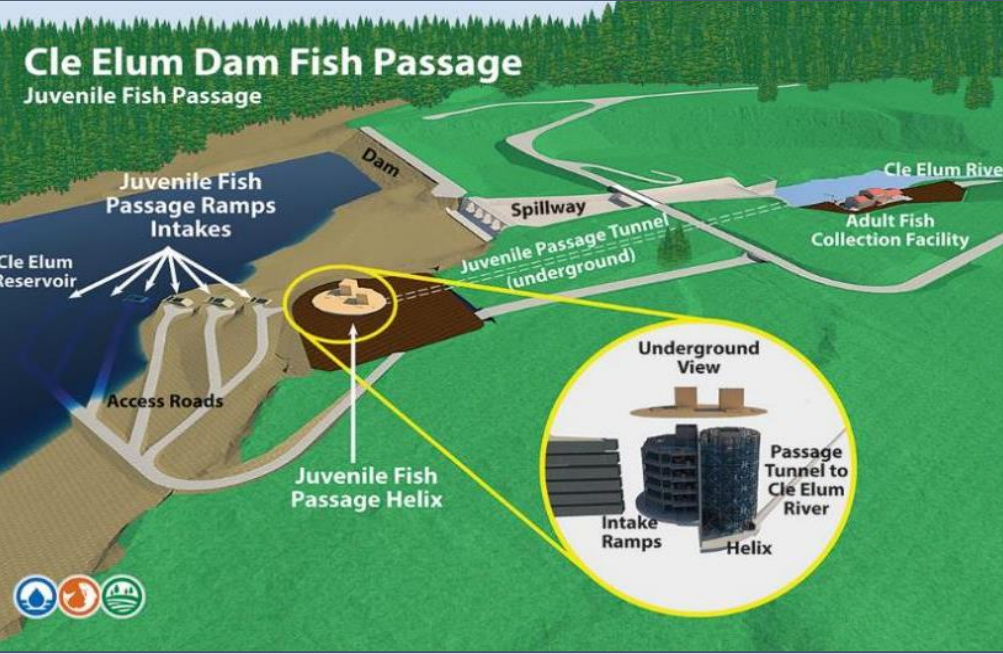


This reference graphic is intended for informational purposes only. It is meant to assist in feature location relative to other landmarks. Geographic features may have been intentionally simplified in an attempt to provide a more readable product. No representation is made as to the accuracy of this document.

Our YBIP progress: 2013-2024

Cle Elum Dam Fish Passage

- Adult and juvenile passage
- \$220M innovative project
- Cost Share Federal/State
- Operational – 2026
- Successful trial Spring 2024



Juvenile Passage Facility Celebration July 25th



JULY 24, 2024

THE BUREAU OF RECLAMATION, CONFEDERATED TRIBES AND BANDS OF THE YAKAMA NATION, THE STATE OF WASHINGTON, AND GARCO CONSTRUCTION INC. INVITE YOU TO JOIN THEM IN CELEBRATING THE HISTORIC MILESTONE OF OPENING UP NEARLY 30 MILES OF CRITICAL FISH HABITAT ABOVE CLE ELUM DAM AND RESERVOIR.

CLE ELUM FISH PASSAGE CELEBRATION

WEDNESDAY, 12:30 P.M.

CLE ELUM DAM | PLEASE ARRIVE AT 12:00 P.M. TO PARK
SEE REVERSE FOR MAP TO EVENT SITE

BUREAU OF RECLAMATION

Fish passage facilities at Cle Elum Dam will:

- Facilitate restoration of salmon and steelhead populations in the Cle Elum River to allow a return of one of the largest sockeye salmon runs in the lower 48 states.
- Benefit threatened species like bull trout, steelhead, and recently reintroduced species including sockeye and coho salmon.

In conjunction with preparation for the fish passage facilities, the Yakama Nation and Washington Department of Fish and Wildlife have developed a reintroduction plan for anadromous fish species above Cle Elum Dam, such as sockeye and coho salmon, spring Chinook salmon, summer steelhead, and Pacific Lamprey.

Please join us as we celebrate groundbreaking of the Adult Collection Facility and completion of the Juvenile Fish Passage Facility construction as envisioned under the Yakima River Basin Integrated Water Resources Management Plan.

*Please wear sturdy footwear (closed toe, boots preferred).
Parking is limited; please carpool if possible.
Salmon bake sponsored by the Yakama Nation will be held following the groundbreaking.*

THE OFFICE OF COLUMBIA RIVER
WATER AND FISH
ECOLOGY
State of Washington
Division of Fisheries, Wildlife and Aquatics

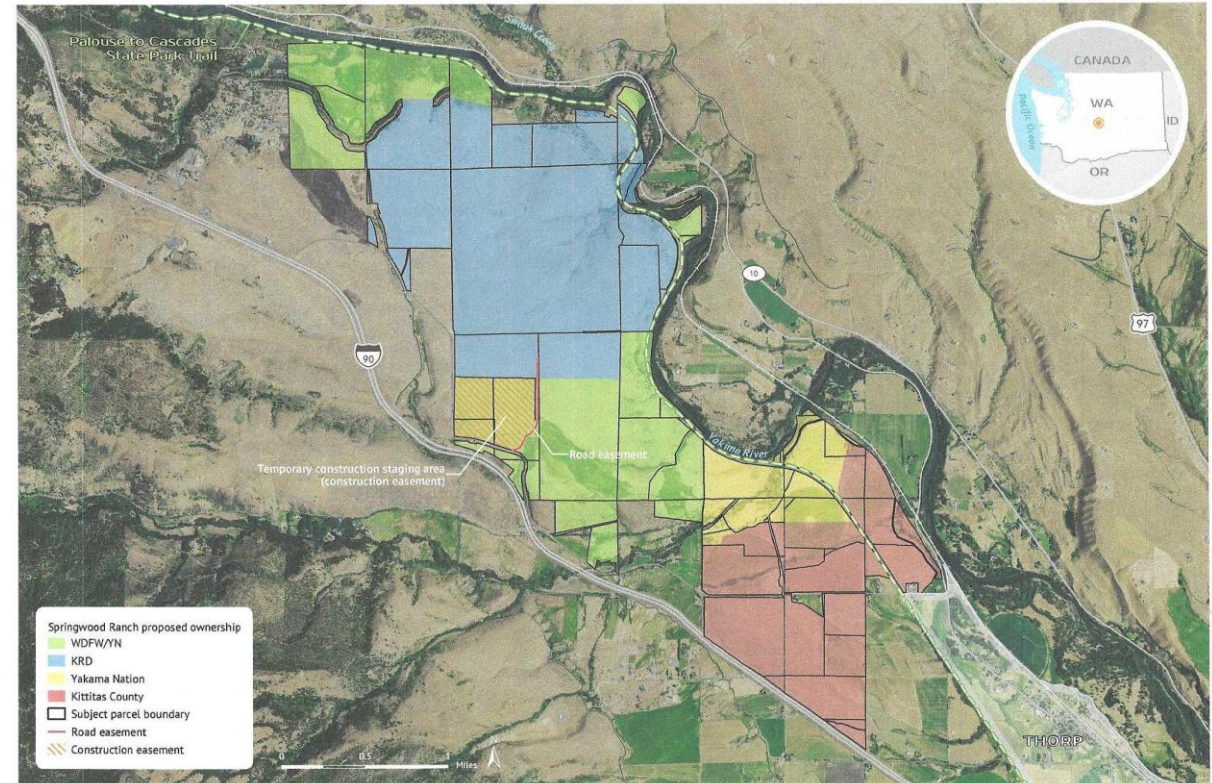


Adult collection facility Groundbreaking



Springwood Ranch Update

- Boundary Line Adjustments
- MOU between WDFW & YN
- Transfer coming soon
- Initially not open for public access



Springwood Ranch
KITITAS COUNTY, WASHINGTON

EXHIBIT 'B' TO
CONVEYANCE AGREEMENTS

April 15, 2024. Copyright © Trust for Public Land. Trust for Public Land and Trust for Public Land logo are federally registered marks of Trust for Public Land. Information on this map is provided for purposes of discussion and visualization only. www.tpl.org





Questions

Request this information in an alternative format or language at wdfw.wa.gov/accessibility/requests-accommodation, 833-885-1012, TTY (711), or CivilRightsTeam@dfw.wa.gov.