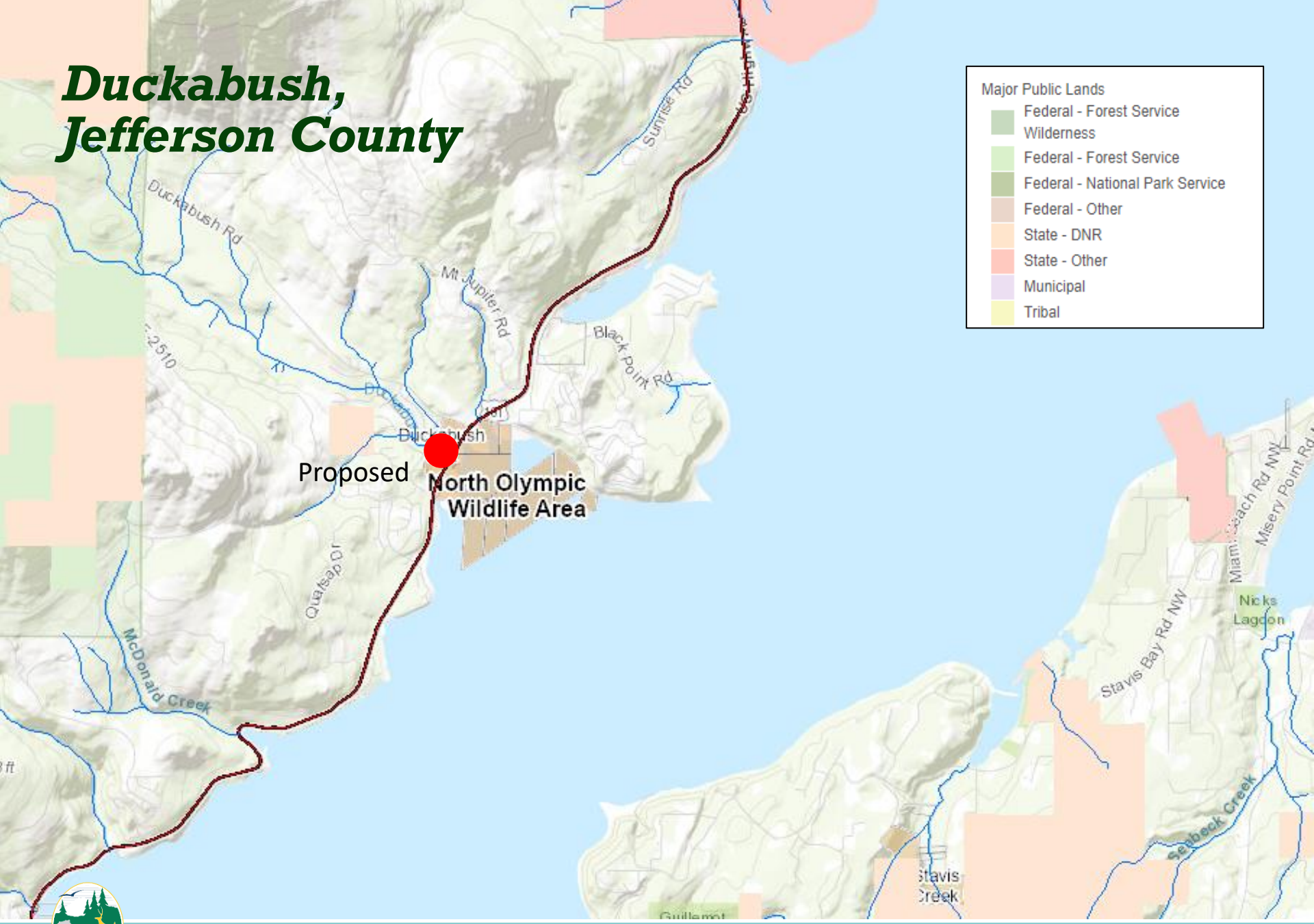


# Duckabush, Jefferson County



# Duckabush

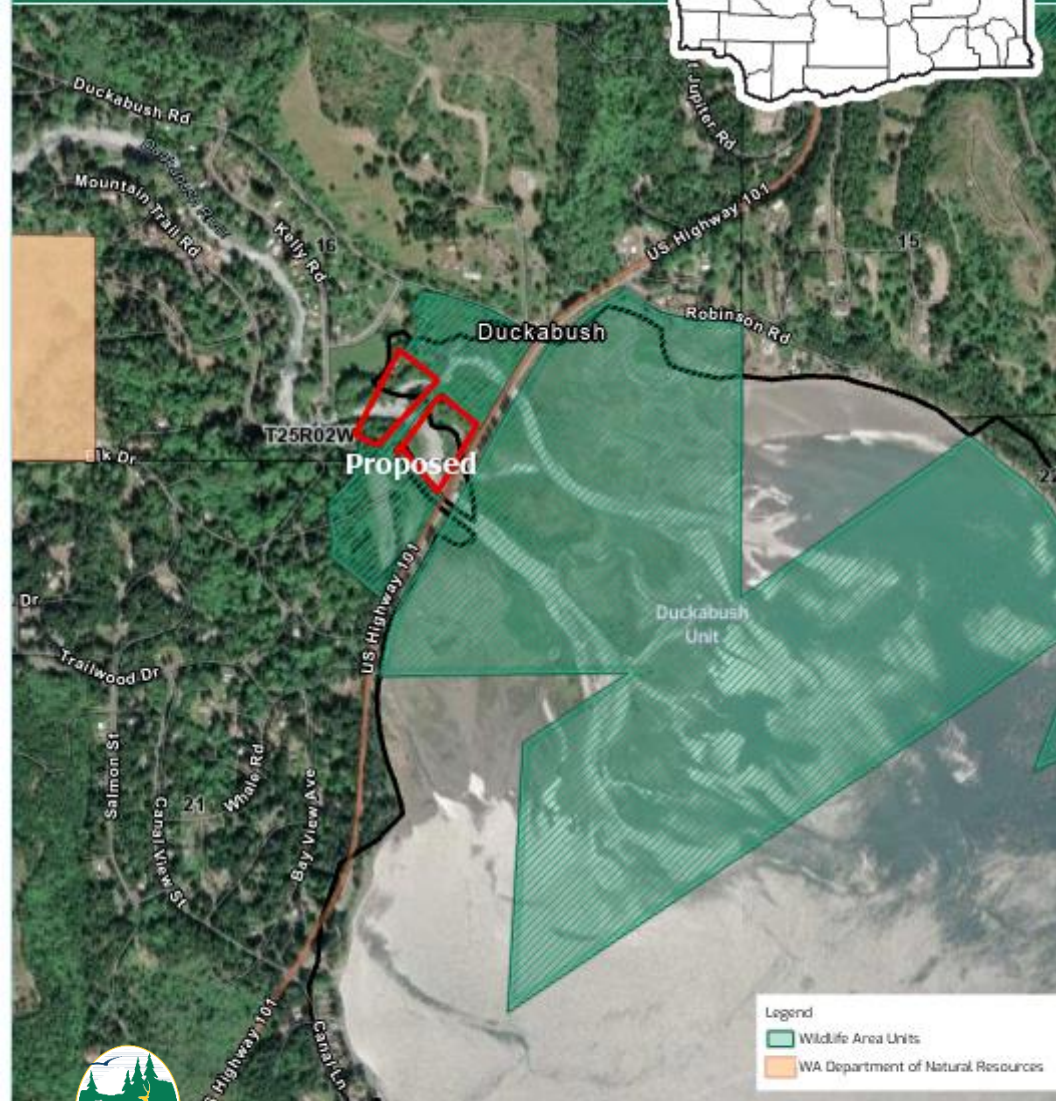
County: Jefferson

Parcel Map



## *Duckabush, Jefferson County*

- 6.3 Acres
- Duckabush Unit
- North Olympic Wildlife Area



# ***Duckabush, Jefferson County***

- Habitat: natural nearshore habitat – integral part of Duckabush Restoration project
- Species: summer chum and Puget Sound Chinook—both ESA-listed species—Puget Sound steelhead, hard shell clams, waterfowl concentrations
- Recreation: wildlife viewing, shell fishing, hunting
- Conservation Partners: Hood Canal Salmon Enhancement

