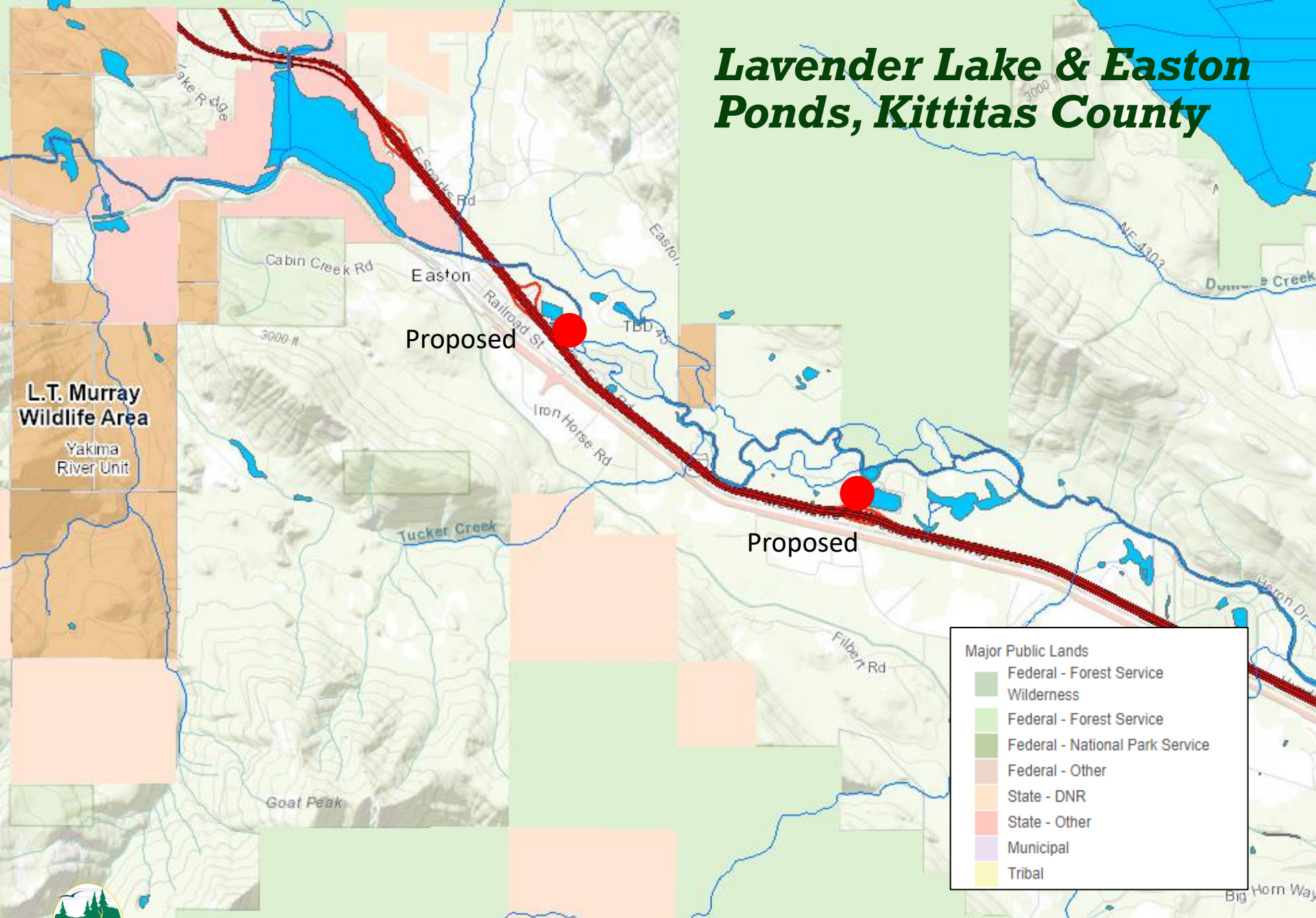


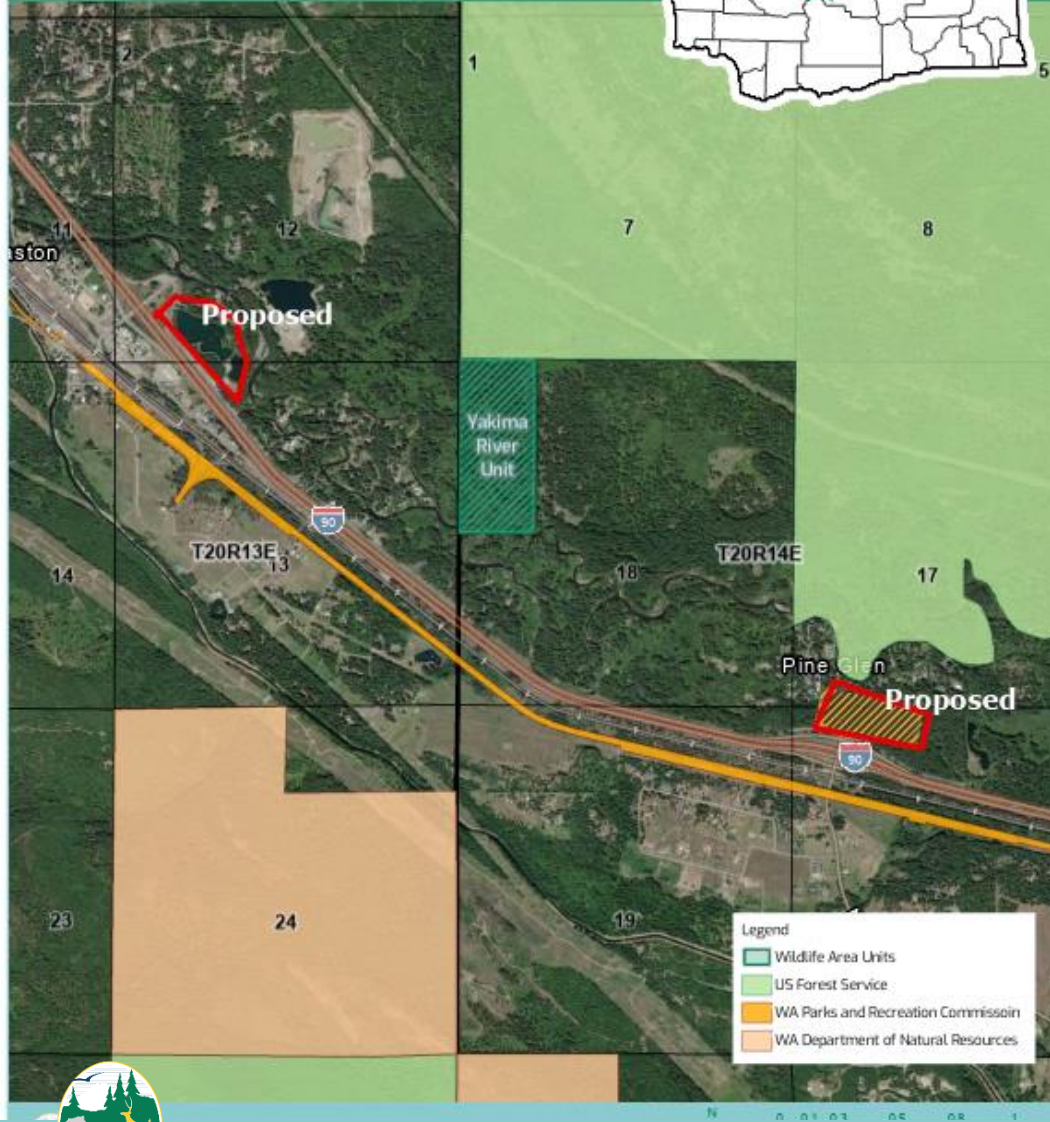
Lavender Lake & Easton Ponds, Kittitas County



Lavender Lake & Easton Ponds

County: Kittitas

Parcel Map



Lavender Lake & Easton Ponds, Kittitas County

- 45 Acres
- Water Access
- Yakima River Unit
- LT Murray Wildlife Area





Lavender Lake & Easton Ponds, Kittitas County

- Lavender Lake is under current WDFW management, owned currently by WSDOT
- Habitat: freshwater lake
- Species: rainbow trout
- Recreation: popular fishing areas

