

Figure A-1. Gold Creek Valley Restoration Project vicinity map. Features that may not be visible at this scale are labeled in the following maps which provide views of portions of the overall Project area.



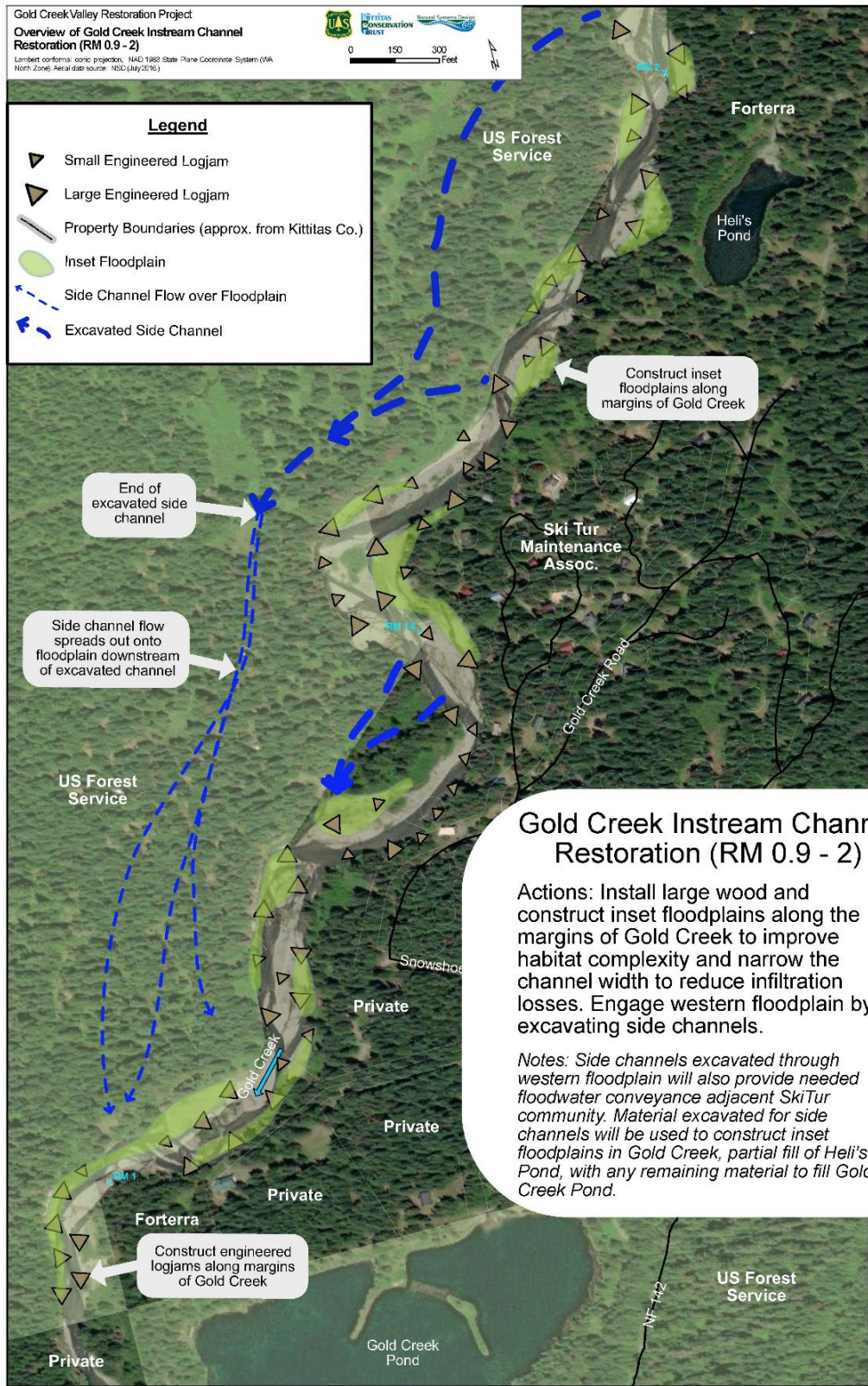


Figure A-2. Overview of Gold Creek Instream Channel Restoration, River Mile 0.9 to 2.0. Size, quantity, and location of jams is approximate, a conceptual representation of activities depicted in detail in the engineered design plans.



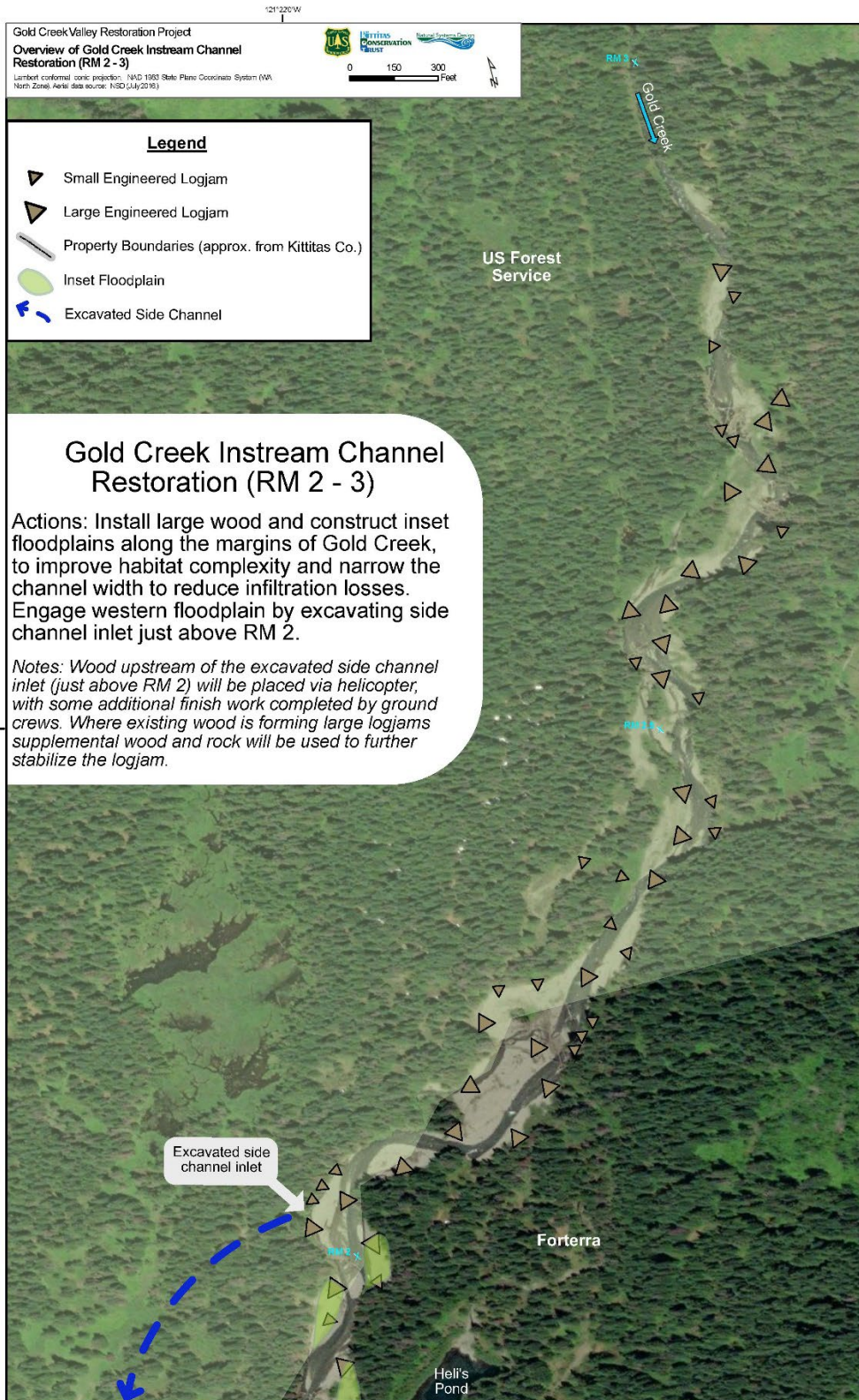


Figure A-3. Overview of Gold Creek Instream Channel Restoration, River Mile 2 to 3. Size, quantity, and location of jams is approximate, a conceptual representation of activities depicted in detail in the engineered design plans.



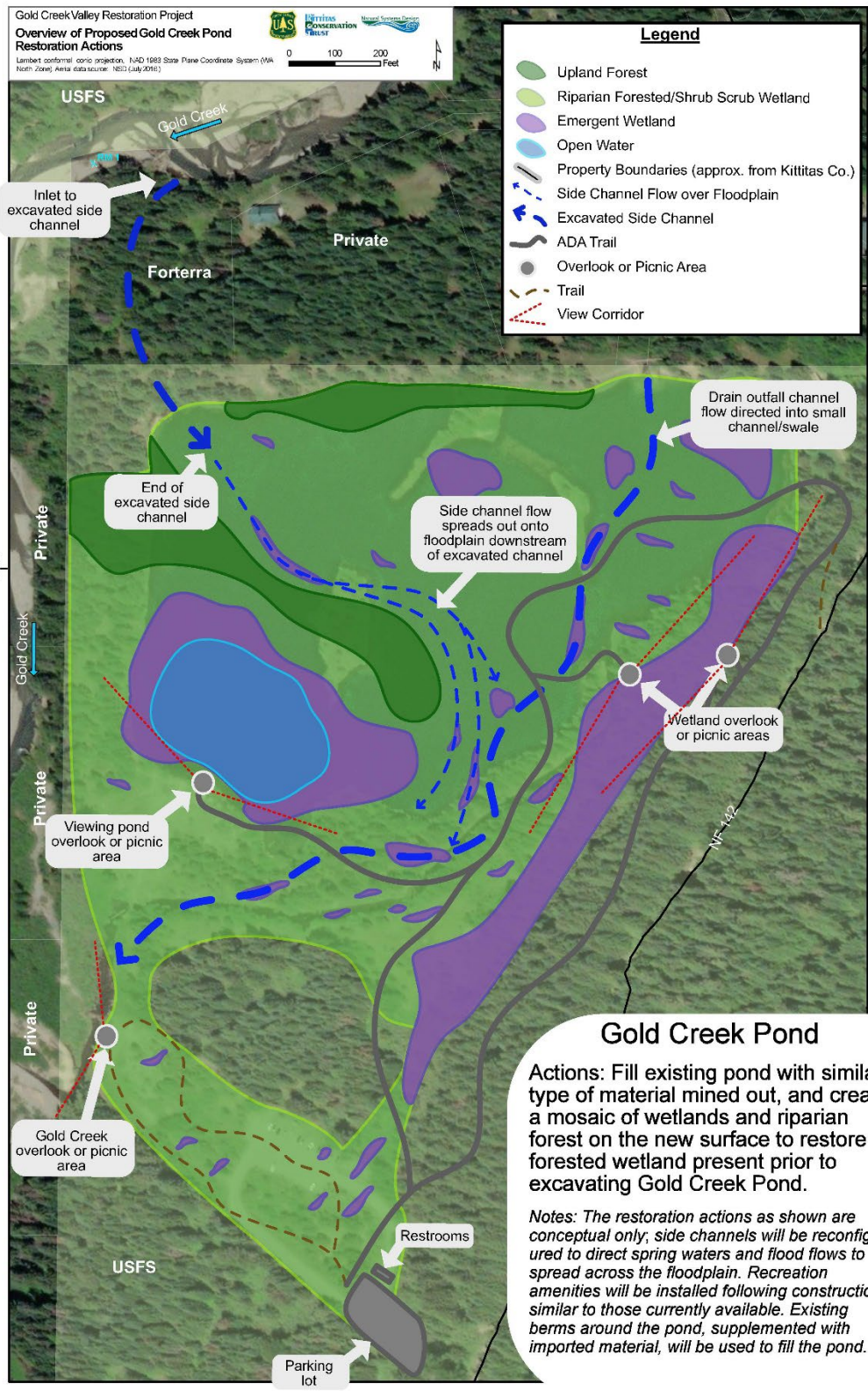


Figure A-4. Overview of Proposed Gold Creek Pond Restoration Actions. Depicted activities are a conceptual representation of the activities depicted in detail in the engineered design plans.



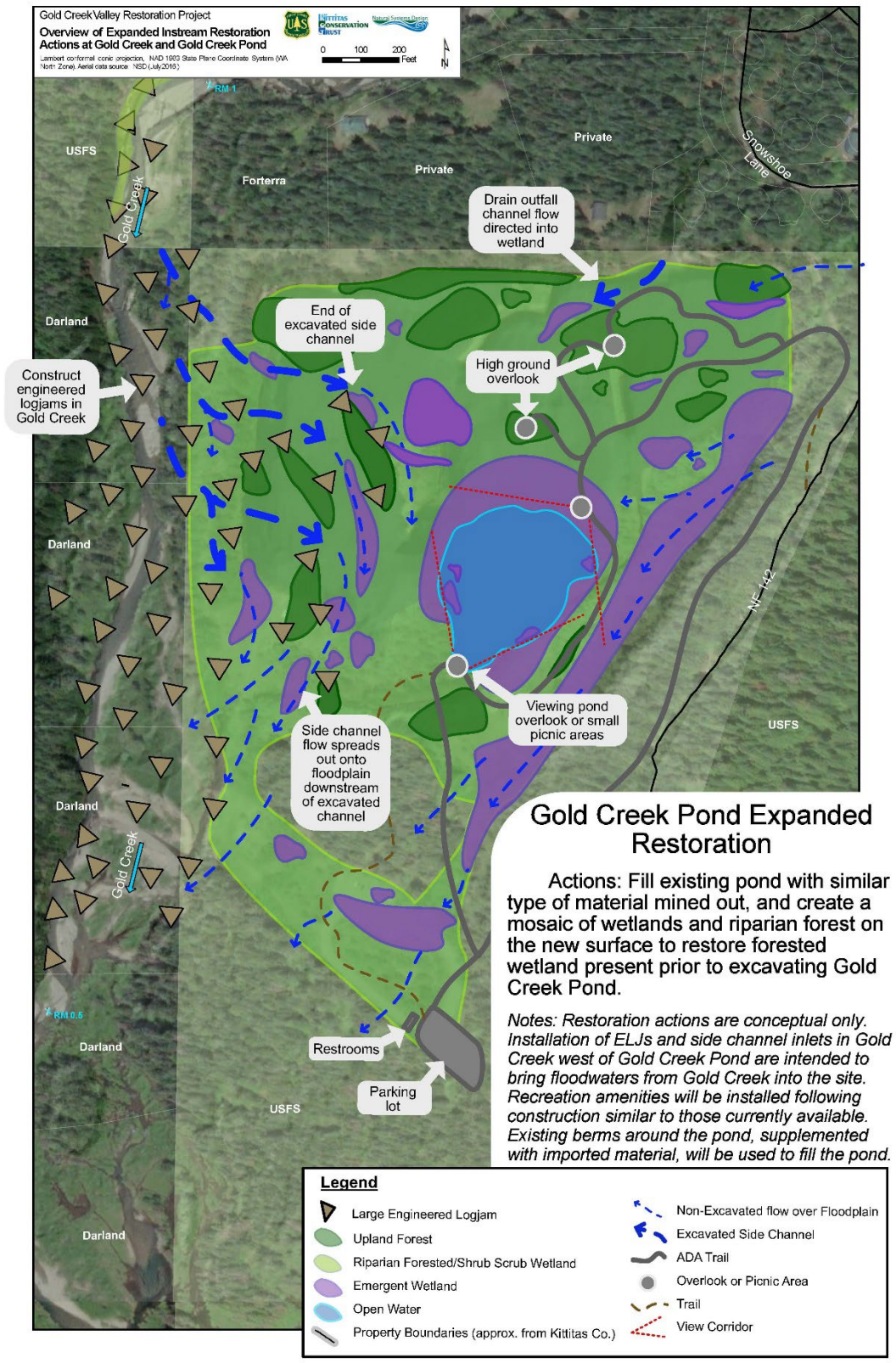
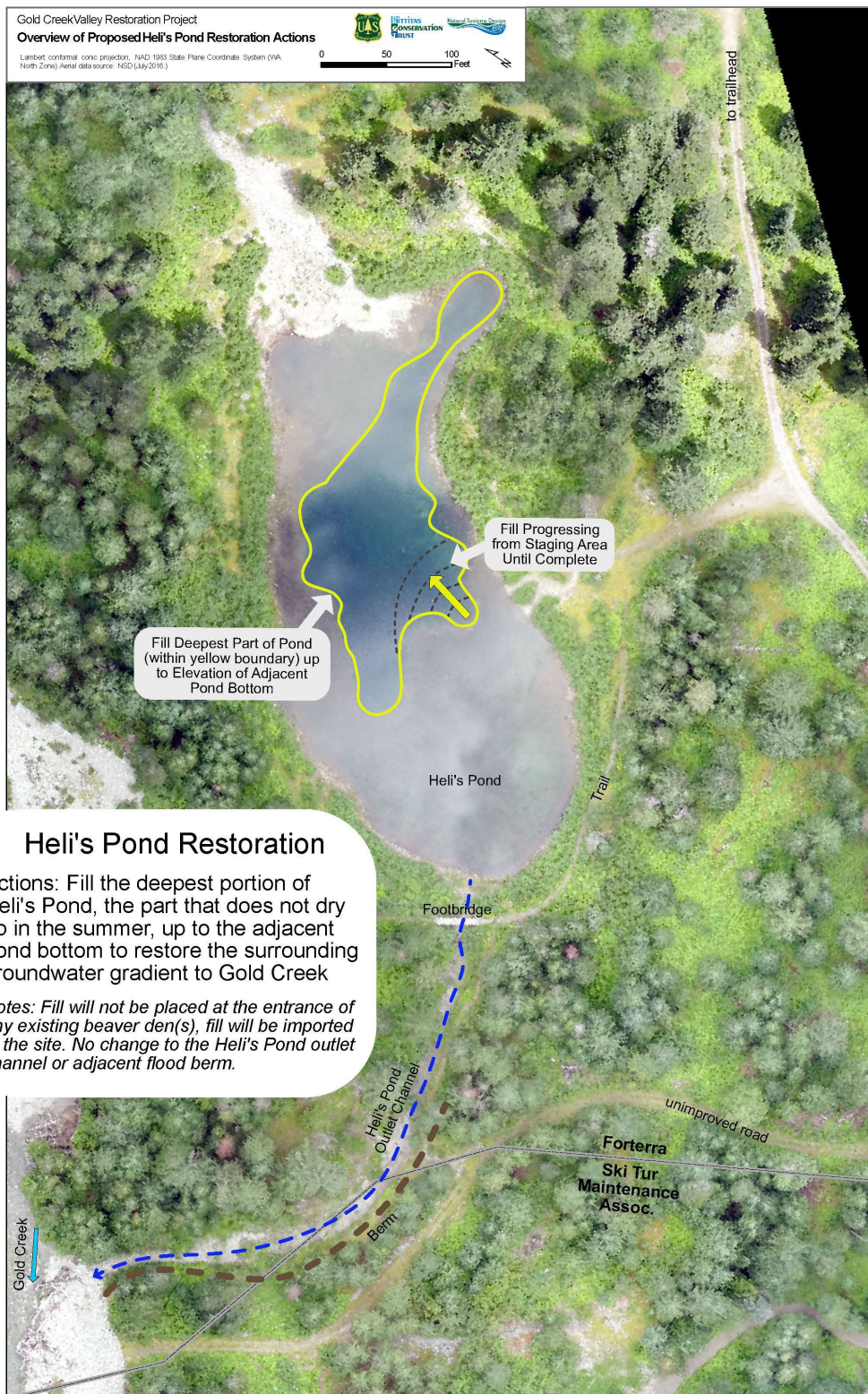


Figure A-5. Overview of Expanded Instream Restoration Actions at Gold Creek and Gold Creek Pond, a conceptual representation of activities depicted in detail in the engineered design plans.





### Heli's Pond Restoration

**Actions:** Fill the deepest portion of Heli's Pond, the part that does not dry up in the summer, up to the adjacent pond bottom to restore the surrounding groundwater gradient to Gold Creek

**Notes:** Fill will not be placed at the entrance of any existing beaver den(s), fill will be imported to the site. No change to the Heli's Pond outlet channel or adjacent flood berm.

Figure A-6. Overview of Proposed Heli's Pond Restoration Actions, a conceptual representation of activities depicted in detail in the engineered design plans.



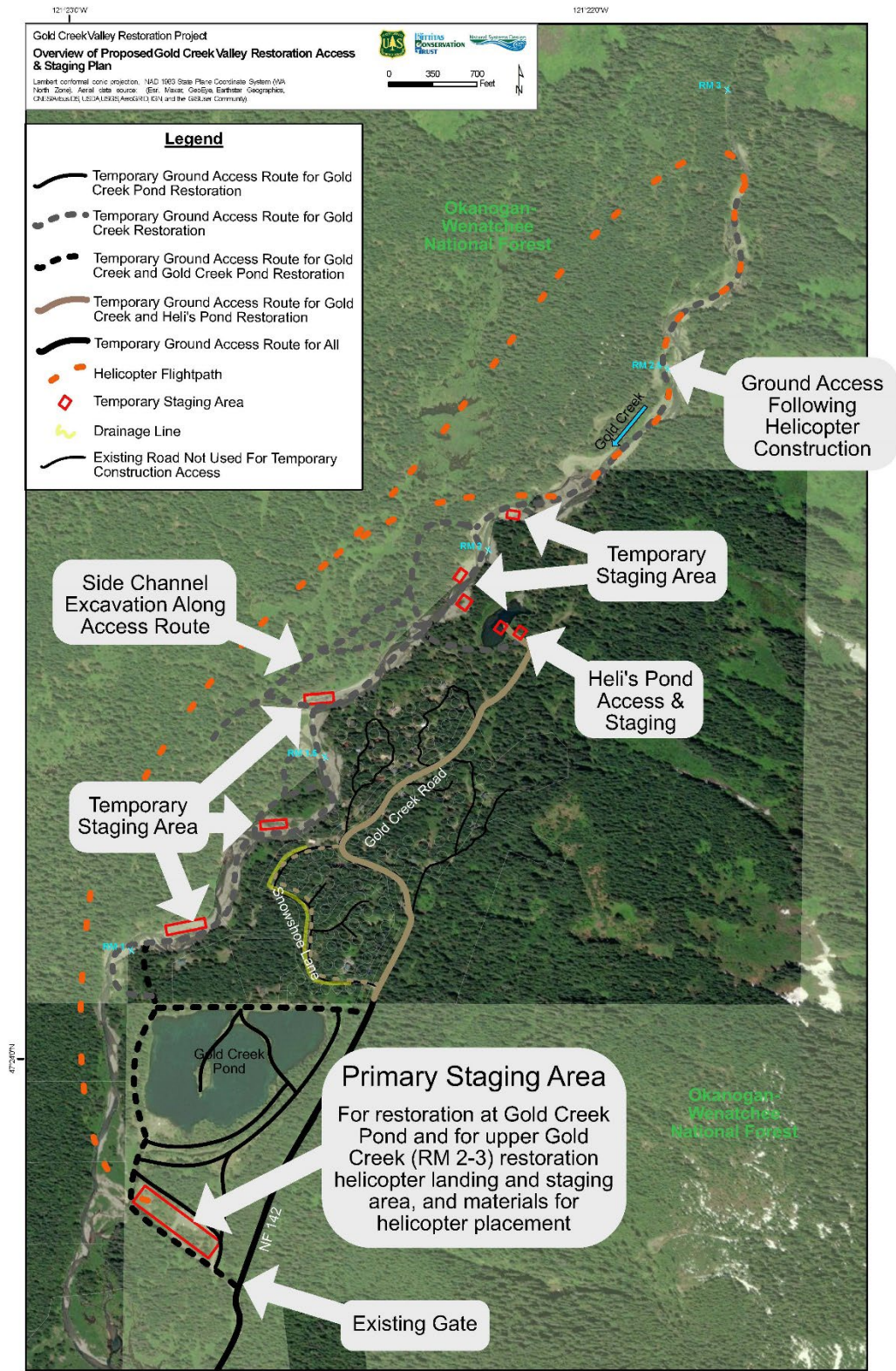


Figure A-7. Overview of Proposed Gold Creek Valley Restoration Access & Staging Plan. This is a simplified concept depiction of construction activities detailed in the engineered design plans.



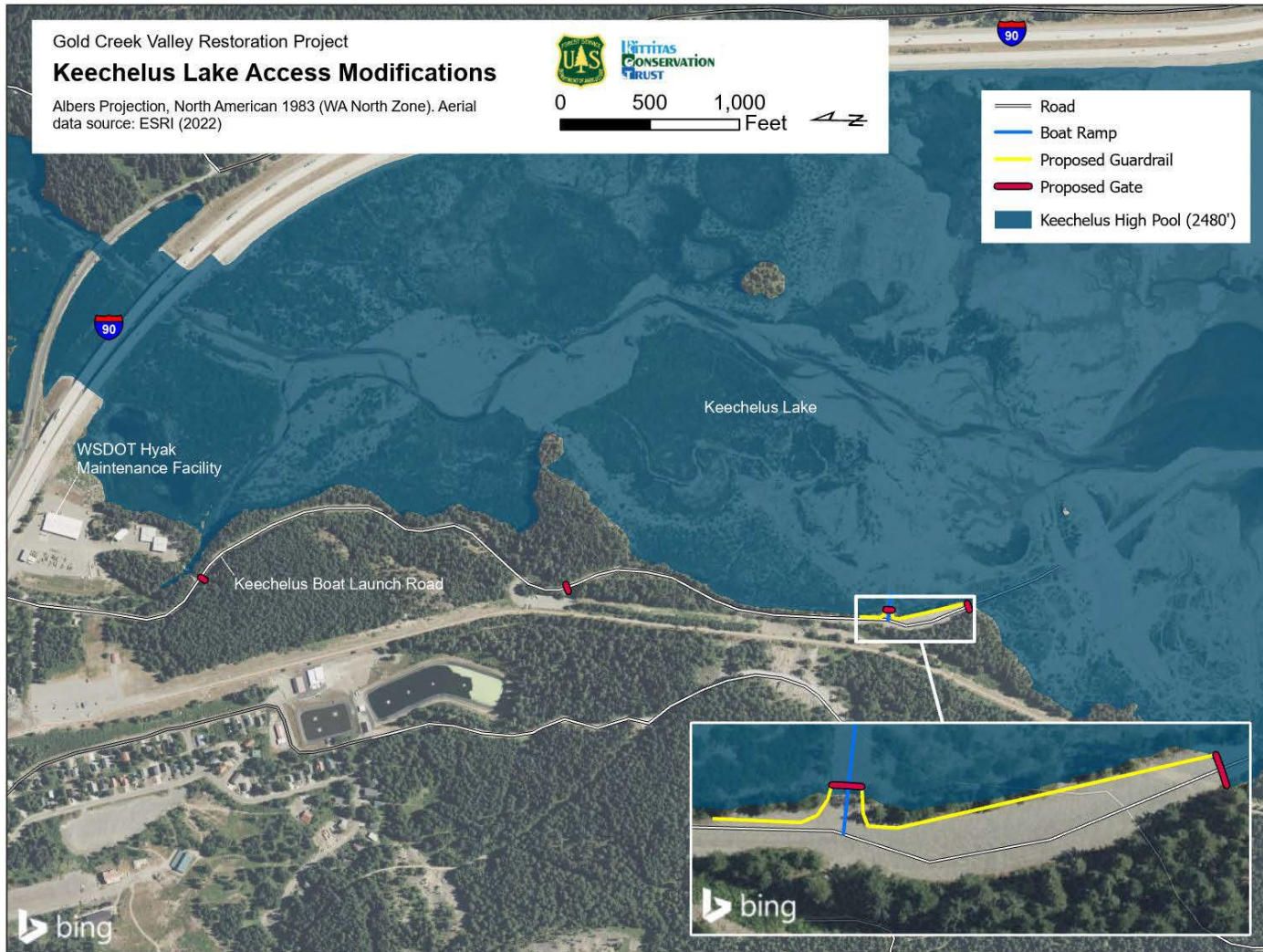


Figure A-8. Keechelus Lake Access Modifications