

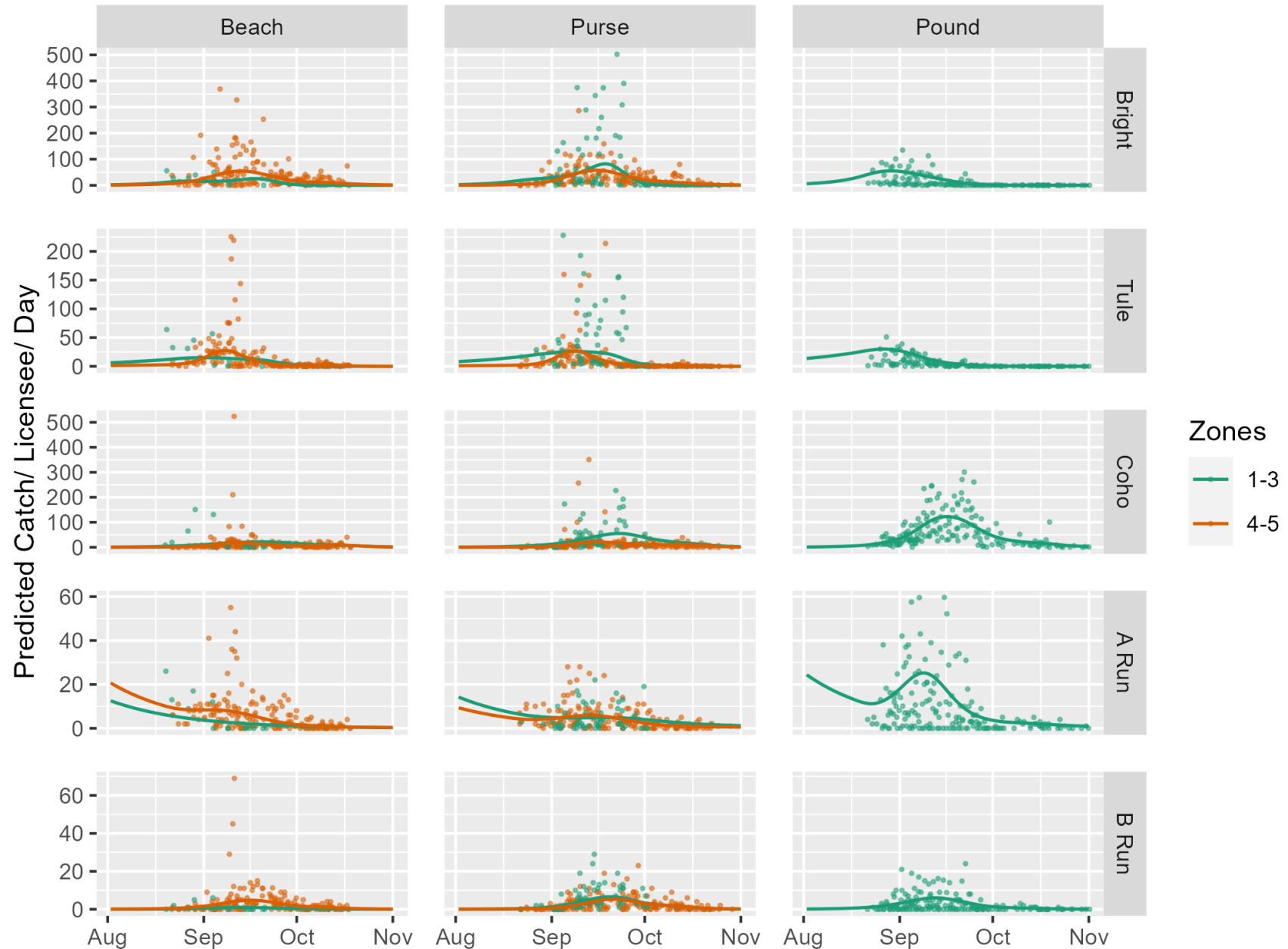
Alt-gear fishery scenarios

October 25, 2022

Alternative gear advisory board meeting

Updated draft catch model

- Each point is observed catch on one day
- Lines are fit to points
- This model is just for planning purposes
 - Understanding approximately how many days of fishing fit within allocation
 - Understanding catch composition
 - Management adjustments would be made in season based on actual catch
- Questions?



Goals of scenario exploration

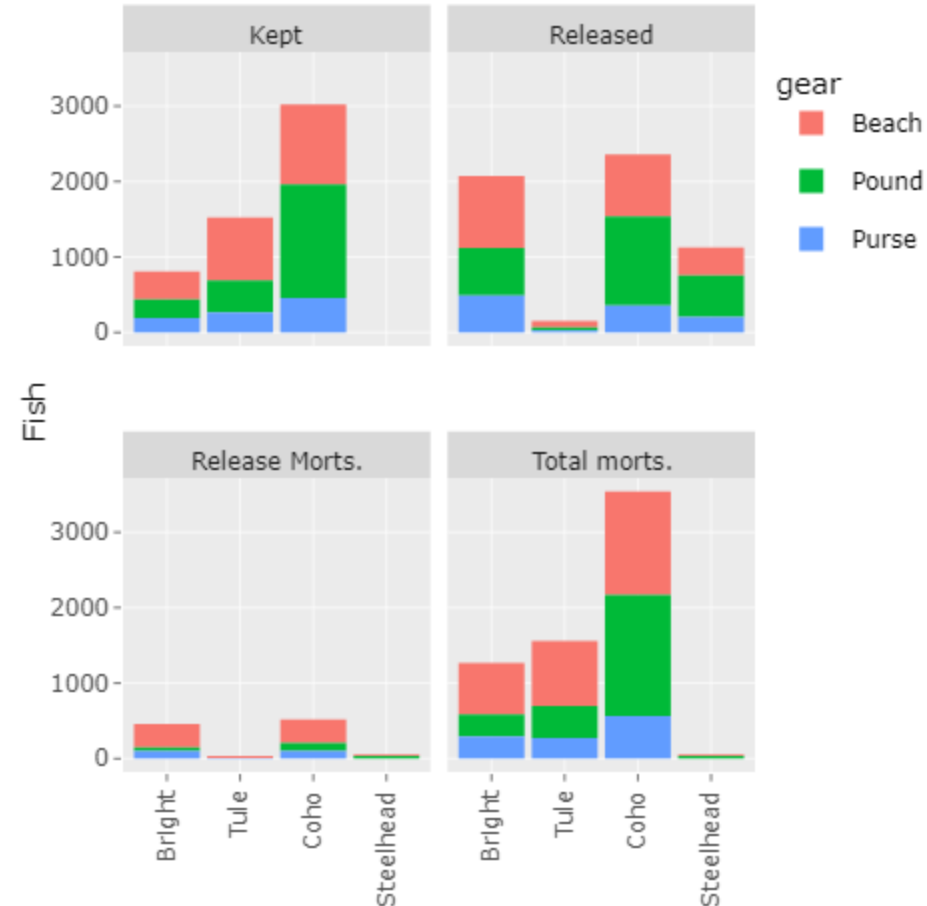
- For two recent years with different forecasts (2021 & 2022), go through pre-season planning as if we were having an emerging commercial fishery
 - When to take effort away from “traditional” commercial gears?
 - When to add days for “alt-gears”?
 - Expected catch and ESA impacts of alt-gear and total commercial fishery?
- Understand preferences for timing of openers and “profitability” and interest based on modeled fishery.
- Reduction (re-shaping) “traditional” catches occurred during the late Fall Zone 4/5 placeholders (weeks 38-40).
 - On URB/SRW limiting year, instituting MSFs resulting in URB being the limiting stock as US vs OR sharing is to the total stock (marked/unmarked combined).

2020 – URB limited scenario

- 2 Pound nets, 5 Beach seines, 1 Purse seine
- Operated mark-selectively
- August 18 – 28 excluding weekends (9 days for all gears) Zones 1-3
- September 14 – October 30 excluding weekends (35 days for all gears) Zones 1-3

	Non-treaty	Commercial (30.1% of non-treaty)	Alt-gear (6.7% of Commercial)
Upriver Bright (URB) Harvest Rate	15.00%	4.51%	0.30%

Stock group	Gear	Kept total	Kept per license
Bright	Beach	371	74
Bright	Pound	244	122
Bright	Purse	192	192
Tule	Beach	836	167
Tule	Pound	425	213
Tule	Purse	265	265
Coho	Beach	1060	212
Coho	Pound	1500	750
Coho	Purse	459	459



2021 – LCR wild tule limited scenario

- 2 Pound nets, 5 Beach seines, 1 Purse seine
- Operated mark-selectively
- August 16 – 27 excluding weekends (10 days for all gears) Zones 1-3
- September 1 – October 29 excluding weekends (35 days for all gears) Zones 1-3

	Non-treaty	Commercial (30.2% of non-treaty)	Alt-gear (6.7% of Commercial)
LCR wild tule Exploitation Rate	10.95%	3.31%	0.22%

Stock group	Gear	Kept total	Kept per license
Bright	Beach	483	97
Bright	Pound	304	152
Bright	Purse	250	250
Tule	Beach	1,011	202
Tule	Pound	514	257
Tule	Purse	321	321
Coho	Beach	5,330	1,066
Coho	Pound	7,565	3,782
Coho	Purse	2,333	2,333

