



*Brian Abbott
Fish Barrier Removal Board
Meeting Packet*

August 2024



Bi-Annual Project Funding Meeting



Brian Abbott Fish Barrier Removal Board Meeting
Proposed Agenda
 Tuesday, August 27, 2024

Teams Meeting Link: [Click here to join the meeting](#)
 Or call in: [+1 872-242-8913](tel:+18722428913), 670056137#
 Phone Conference ID: 670 056 137#

| | | |
|-------------------------------|--|---|
| Purpose of Meeting: | <i>The intent of this monthly Board meeting is to provide general updates around fish barrier removal topics and funding, approve 2025-2027 Project List, decide on three cost increase requests, and share funding updates.</i> | |
| Time | Agenda Topic | Materials |
| 9:00-9:30 a.m. (30 mins) | Welcome and Introductions – Joy Juelson, Facilitator, Triangle Associates; and Chair Tom Jameson, WDFW <ul style="list-style-type: none"> ▪ Board and staff introductions ▪ Review agenda and meeting purpose ▪ Public Comments: Submit public comments via e-mail to FBRB@dfw.wa.gov for inclusion in the record ▪ Review July 2024 Summary <ul style="list-style-type: none"> ○ Decision: Approval of July 2024 Summary | Agenda July 2024 Meeting Summary |
| 9:30-9:30 a.m. (0 mins) | General Updates <ul style="list-style-type: none"> ▪ Additional Topics? | |
| 9:30-10:40 a.m. (70 mins) | Approve Ranked 2025-2027 Project List – Kaylee Kautz, WDFW; and Technical Review Team (TRT) <ul style="list-style-type: none"> ▪ Review Ranked 2025-2027 Project List ▪ Board discusses Ranked 2025-2027 Project List <ul style="list-style-type: none"> ○ Decision: Approve Ranked 2025-2027 Project List | Ranked 2025-2027 Project List Presentation Slides |
| 10:40-10:55 a.m. (15 mins) | Break | |
| 10:55-11:35 a.m. (40 mins) | Cost Increase Request: Three Projects (see list below) – Cost Increase Subcommittee; and John Foltz, RCO <ul style="list-style-type: none"> ▪ Review three cost increase requests: <ul style="list-style-type: none"> ○ 21-1391: Carpenter Creek ○ 21-1412: Eagle Creek ○ 21-1404: Padden Creek ▪ Review and discuss Cost Increase Subcommittee’s recommendations <ul style="list-style-type: none"> ○ Decision: Approve the cost increase requests? | Cost Increase Supporting Materials Subcommittee Recommendation Slides Subcommittee High-level Notes |

| | | |
|--------------------------------------|--|-----------------------------------|
| Purpose of Meeting: | <i>The intent of this monthly Board meeting is to provide general updates around fish barrier removal topics and funding, approve 2025-2027 Project List, decide on three cost increase requests, and share funding updates.</i> | |
| Time | Agenda Topic | Materials |
| 11:35-11:40 a.m. (5 mins) | Board Project Funding Updates – John Foltz, RCO; Chair Jameson WDFW <ul style="list-style-type: none"> ▪ Update on projects seeking or that have successfully obtained federal funding ▪ Update on status of returned funds | 2023-2025 Project Funding Graphic |
| 11:40-11:40 a.m. (0 mins) | Project and Policy Issue / Opportunities – Board Members <ul style="list-style-type: none"> ▪ Any additional topics or updates? | |
| 11:40-11:50 a.m. (10 mins) | Discuss Upcoming Opportunities for Engagement – Triangle Associates & Board Members <ul style="list-style-type: none"> ▪ Fish Passage Strategy Forum on Oct. 2 in Wenatchee, WA ▪ Last week’s Congressional tour of Fisher Creek ▪ Seattle Times articles ▪ Input from Board members ▪ Additional items upon request | |
| 11:50 a.m. - 12:00 p.m. (10 mins) | Action Items & Next Steps – Triangle Associates <ul style="list-style-type: none"> ▪ Review action items / paths forward ▪ Plan for future meetings: <ul style="list-style-type: none"> ○ Oct. 1-2 In-person – Okanogan Site Visit | |
| 12:00 p.m. | Adjourn | |

July Summary Notes



Brian Abbott Fish Barrier Removal Board – July 2024 Meeting Summary

Date: July 16, 2024

Time: 9:00 a.m. to 12:00 p.m.

Location: Virtual Meeting

Summary: Formal Actions / Decisions

| Item | Formal Action |
|---|---------------|
| Board Decision: Meeting notes from May 2024. | Approved |
| Future Decision (August): Approval of the 2025-2027 Ranked Project List. | Pending |
| Future Decision (August): Cost increases for Padden Creek and Carpenter Creek. | Pending |

Summary: Follow-up Items and Next Steps

| Item | Follow-up |
|--|---|
| Fish Passage Strategy Subcommittee(s) | A Fish Passage Strategy Subcommittee will be formed in August or September 2024 to discuss and provide feedback on Fish Passage Strategy implementation. |
| Funding Status Updates (Ongoing) | WDFW and RCO will keep the Board updated on the status of returned funds. A decision on whether to 1) retain funds for cost increases or 2) advance funds to alternate down the ranked project list is anticipated this fall. |
| Fish Passage Strategy Input (Long-term) | Additional engagement opportunities for the Board to review and provide input on the Fish Passage Strategy will be available once a draft is released this fall. |
| Match Modernization (On Hold) | The Board will continue to monitor the Salmon Recovery Funding Board (SRFB)'s implementation of match modernization and consider updating the Board match requirements for future grant rounds. |

Welcome/Introductions/Agenda Review: Triangle Associates (Triangle) facilitator, Joy Juelson, called the meeting to order at 9:00 a.m. Chair Thomas Jameson, Washington Department of Fish and Wildlife (WDFW), welcomed attendees. Alex Sweetser, Triangle, facilitated introductions with Board members and staff. A quorum was present.

Public Comment: None

Old Business: The notes for the FBRB June 2024 meetings were reviewed by the facilitator. A motion to approve the summary was made by Erik Neatherlin, Governor’s Salmon Recovery Office (GSRO), and seconded by Carl Schroeder, Association of Washington Cities (AWC). The motion was approved with no objections.

Fish Passage Strategy Presentation:

Jane Atha, WDFW, presented on the Fish Passage Strategy (Strategy) outlining the Strategy's purpose, legislative expectations, and the process to develop the Strategy (see [meeting handout](#) pgs. 1-23).

Phil Roni, Cramer Fish Sciences (Cramer), then provided a detailed overview of the draft Strategy (see [meeting handout](#) pgs. 24-31). The Strategy recommends two approaches for prioritizing barrier removals: 1) scoring and ranking and 2) mathematical optimization. The Strategy is a hybrid approach, which combines these two methods. Phil reviewed both approaches, the recommended criteria for each, and how these concepts can be integrated into prioritization methods used by regional groups.

Kai Ross, Cramer, gave a detailed primer on mathematical optimization (see [meeting handout](#) pgs. 37-48). He explained that optimization seeks to maximize an objective function, such as the amount of habitat opened by removing barriers, based on the parameters of the model and within a set of constraints.

Hilary Wilkinson, Triangle, concluded the presentation by reviewing the input process timeline (see [meeting handout](#) pgs. 36). She noted tribal outreach is ongoing, and there will be another opportunity for the Board and salmon recovery organizations to provide input in September 2024. WDFW will likely ask the following questions:

- Any input on proposed hybrid approach?
- Any input on draft list of proposed criteria?
- Any insights regarding implementation of Strategy and what is needed?

Board Questions and Discussion

- When asked by Steve Manlow, Council of Regions, if there will be opportunities for WDFW to update the agency's barrier inventory data, Jane Atha explained that WDFW is on a parallel track to fund and support updating the inventory and assessment of barriers already within WDFW's database. She emphasized that the statewide optimization model will not be a prescriptive list of barriers, but instead can be used to identify high priority areas within watersheds to focus future inventory work. Chair Jameson reiterated that optimization could be used to identify priority areas within watersheds for the agency's limited inventory and assessment staff to focus their work on. Additionally, the agency can work with local organizations to assess the status of barriers in those priority areas. He noted that as part of the Culvert Case Injunction, barrier assessment data was determined to be outdated after 10 years, which means there is a strong need to reevaluate barriers in WDFW's database. Steve noted the Regions are standing ready to bring local knowledge to help with data verification.
- In response to a question from Carl Schroeder about whether Washington State Department of Transportation (WSDOT)'s barrier removal schedule could be incorporated into the optimization model, Kai explained that near-term removals could be incorporated into the connectivity component of the optimization model. This means barriers slated for removal would not count against connectivity when assessing upstream barriers.
- When asked by Carl if the optimization model could be designed around cost or percentage of connectivity, Kai said these factors could be incorporated into the objective function (i.e., goal) of the optimization model. Phil noted many optimization models are based on costs. However, there are sensitivities around putting a price on salmon recovery, so the model was designed to focus on ecological outcomes. As Regions gain more experience with the optimization model, they could adapt it at the regional level to be more focused on costs.
- When asked by Erik Neatherlin about using the model for technical versus policy decisions, Phil explained this optimization model was designed to produce technical results, which could then be used to inform policy decisions. The state can maintain the statewide optimization model while Regions can use it at the regional level to focus on their own regional priorities. Jane reiterated that WDFW leadership wanted the optimization model to avoid policy components, such as costs. However, there is flexibility with the model and questions about calibration or verifying data at

the local level need to be addressed. The second phase of Strategy development will involve outreach with the FBRB and key partners to fill out those policy pieces.

- Erik expressed concerns about people using the model without fully understanding it and generating spurious results or having a negative impression of the model's capabilities. He noted there are provisos from the legislature directing WDFW to work with regional recovery boards and local partners. He suggested the agency focus on engagement these groups as part of the next phase of Strategy development. Phil agreed and noted scoring and ranking is recommended at the regional level because it is more accessible and transparent.
- In response to a question from Carl if the model could account for downstream barriers on private property that would not be corrected, Phil and Kai agreed it could be coded in the model and identified as part of implementation through the incorporation of local knowledge. Chair Jameson and Gabrielle Stilwater, WDFW, noted WDFW has authority over barriers that are noncompliant and there is ongoing rulemaking that will inform how the agency seeks remedies for those barriers.

Path Forward: A Fish Passage Strategy Subcommittee will be formed in August or September 2024 to discuss and provide feedback on Fish Passage Strategy implementation.

Path Forward: Additional engagement opportunities to review and provide input on the Fish Passage Strategy will be available once a draft is released this fall.

Scoring and Ranking of 2025-2027 Projects

Kaylee Kautz, WDFW, presented an overview of the 2025-2027 Project List to help prepare the Board for a decision at the August Board meeting (see [meeting handout](#) pgs. 49-55). Her presentation included an overview of the grant round timeline, a summary of the requests, and a list of projects using alternative designs or other informational items for the Board's consideration. None of these items require a Board decision since all are eligible for funding. In total, there are 55 proposed projects requesting \$70.8m.

Board Questions and Discussion

- Steve Manlow expressed appreciation for WDFW identifying alternative designs up front and asked if the Board could coordinate with these sponsors to increase their funding request before finalizing the list to avoid potential cost increases in the future. For example, projects with alternative designs often need additional modeling. Kaylee noted that RCO and the Technical Review Team (TRT) had several checkpoints with sponsors to identify issues in advance. John Foltz, Recreation and Conservation Office (RCO), added that budgets are created with the best available information at the time of submittal, but there may be an opportunity to add contingency funds to the budget.
- The Board discussed the time sensitivities of approving the ranked 2025-2027 Project List. A decision needs to be made at the August Board meeting so RCO can submit the list to the Office of Financial Management. RCO and the TRT are scoring and ranking the 2025-2027 Project List and aim to provide the ranked list in early August – a few weeks before the next meeting.
- Board members were invited to schedule time with WDFW and RCO to look at the project list if they had any questions or concerns, especially around projects with higher costs relative to previous grant rounds. However, following the meeting, no members accepted this invitation.

Board Project Funding Updates:

Update on Projects Seeking or that have Successfully Obtained Federal Funding

John Foltz shared that the remaining \$50 million of Promoting Resilient Operations for Transformative, Efficient, and Cost-Saving Transportation (PROTECT) funds have been obligated to the list of projects the Board approved in April 2024. Projects are completing their agreements to be funded through PROTECT.

In September 2023, the Board submitted a bundle of nine FBRB projects requesting \$13.3 million from NOAA's federal grant program (see [NOAA grant page](#)). These projects were not funded, partly due to the high number of applications NOAA received this year.

Update on Status of Returned Funds and Future Board Discussion on the Cost Increase Funds

John Foltz shared that returned funds were used to fund down the project list to project #61 on the 2023-2025 List (see [meeting handouts](#) pgs. 56-59). Additionally, he noted the Board set aside \$1.75 million of returned funds for cost increase requests and that \$600 thousand of that has been obligated to cost increase requests. As of this meeting, approximately \$4.8 million of Board funding is unobligated. RCO is holding off on allocating these funds to alternates on the 2023-2025 Project List while the newly funded projects get under agreement and while the Board decides on newly received cost increase requests.

In July, the Board received cost increase requests for the Padden Creek and Carpenter Creek projects. A Cost Increase Subcommittee meeting was held on July 10, and another in August to develop a formal recommendation for the Board to consider at the August Board meeting for a Board decision.

Chair Jameson noted that the Board received \$22.1 million of Climate Commitment Act (CCA) funding for the 23-25 FBRB Project List as part of the 2024 Supplemental Budget. However, a measure to repeal the CCA is on the November 2024 ballot. Therefore, these funds will not be available until January 1, 2025 provided the CCA is not repealed.

Path Forward: WDFW and RCO will keep the Board updated on the status of returned funds. A decision on whether to retain funds for cost increases or advance funds to alternate down the ranked project list is anticipated this fall.

Future Decision (August): Approve the cost increases for Padden Creek and Carpenter Creek.

Adjourn: The meeting adjourned at 12:00 p.m.

Next Meeting: Virtual Meeting on August 27, 2024.

ATTENDANCE

Board Members/Alternates:

| | |
|---|--|
| April Magrane, Washington State Department of Transportation (WSDOT) | Erik Neatherlin, Governor's Salmon Recovery Office (GSRO) |
| Carl Schroeder, Association of Washington Cities (AWC) | Steve Manlow, Council of Regions |
| Chair Thomas Jameson, Washington Department of Fish and Wildlife (WDFW) | Susan Eugenis, Washington State Association of Counties (WSAC) |
| John Box, Colville Tribes | Tim Resseguie, Tim Resseguie Yakima Nation |
| Kaylee Kautz, WDFW | |

WDFW, RCO Staff and Triangle Facilitation Team:

| | |
|---------------------------|---|
| Adam Fleming, WDFW | Melissa Erkel, WDFW |
| Casey Costello, WDFW | Molly Borgaard, WDFW |
| Daniel Coffman, WDFW | Alice Rubin, Recreation and Conservation Office (RCO) |
| David Collins, WDFW | Christy Rains, RCO |
| Gabrielle Stilwater, WDFW | John Foltz, RCO |
| Jane Atha, WDFW | Alex Sweetser, Facilitation Support |
| Joel Ingram, WDFW | Joy Juelson, Facilitation Support |

Guest Presenters:

| | |
|---------------------------------|--|
| Kai Ross, Cramer Fish Sciences | Hilary Wilkinson, Presenter/Presentation Support |
| Phil Roni, Cramer Fish Sciences | Kate Galambos, Presentation Support |

Others observing:

| | | |
|----------------|-----------------|--------------|
| Ali Fitzgerald | Cheryl Baumann | Kevin Long |
| Amelia Johnson | Daniel Howe | Heather Yu |
| Ashley Bagley | Jessica Helsley | Mike Reicher |
| Brett Swift | | |

Preliminary BAFRB Ranked List

Preliminary Draft: 8-20-2024

Brian Abbott Fish Barrier Removal Board 2025-2027 - Ranked List

| Rank | Project Number and Type | Project Name | Grant Applicant | Grant Request | Applicant Match | Project Total | Cumulative Total Grant Request |
|-------|-------------------------|--|---------------------------------------|---------------|-----------------|---------------|--------------------------------|
| 1 | 23-1862 R | Allender Road Stillwater Creek Fish Passage | Cowlitz County | 2,894,000 | 510,600 | 3,404,600 | 2,894,000 |
| 2 | 23-1898 P | Eagle Creek Five Fish Passage Barriers | Chelan County | 346,000 | - | 346,000 | 3,240,000 |
| 3 | 23-1793 R | Mill Creek Fish Passage - Gose St. | Tri-State Steelheaders Inc | 2,815,000 | 800,000 | 3,615,000 | 6,055,000 |
| 4 | 23-1857 R | Coleman Creek at RM 5.22 Fish Passage Restoration | Kittitas Co Conservation Dist | 764,000 | 134,926 | 898,926 | 6,819,000 |
| 5 | 23-1814 P | Padden Cr Estuary Fish Passage Improvements | Bellingham | 1,572,000 | 277,275 | 1,849,275 | 8,391,000 |
| 6 | 23-1946 P | Little Skookum Inlet Tributaries Fish Passage | Mason County | 2,963,000 | 522,810 | 3,485,810 | 11,354,000 |
| 7 | 23-1949 R | Carpenter Creek Hickox Rd Culvert Replacement | Skagit Fish Enhancement Group | 3,194,000 | 563,526 | 3,757,526 | 14,548,000 |
| 8 | 23-1795 R | Mill Creek Fish Passage - Roosevelt to Tausick | Tri-State Steelheaders Inc | 3,070,000 | 541,653 | 3,611,653 | 17,618,000 |
| 9* | 23-1908 R | Sand Creek culvert replacement | Chelan County | 394,000 | 69,410 | 463,410 | 18,012,000 |
| 10 | 23-1788 R | Van Ornum Crk at Bunker Crk Rd Fish Passage Constr | Lewis County Public Works | 1,781,000 | 314,245 | 2,095,245 | 19,793,000 |
| 11 | 23-1813 P | Little Pilchuck Creek Fish Passage Restoration | Snohomish Co Surface Water | 4,677,000 | 825,355 | 5,502,355 | 24,470,000 |
| 12 | 23-1822 P | SE High Point Way Culvert Replacement | King County Road Srvc Div | 1,307,000 | 230,565 | 1,537,565 | 25,777,000 |
| 13 | 23-1943 R | George Davis Creek Fish Passage Construction | Sammamish City of | 4,455,000 | 1,885,000 | 6,340,000 | 30,232,000 |
| 14 | 23-1786 P | Butler Creek-Pillar Point Park Culvert #993889 | North Olympic Salmon Coalition | 540,000 | 95,196 | 635,196 | 30,772,000 |
| 15 | 23-1945 R | Eagle Creek Full Barrier Removal | Cascadia Conservation District | 322,000 | 56,736 | 378,736 | 31,094,000 |
| 16 | 23-1806 R | 61st Ave. NW at Frye Cove Tributary Fish Passage | Thurston County Public Works | 1,954,000 | 346,468 | 2,300,468 | 33,048,000 |
| 17 | 23-1864 P | South Toutle Road Studebaker Creek Fish Passage | Cowlitz County | 408,000 | 72,000 | 480,000 | 33,456,000 |
| 18 | 23-1830 R | Parish Creek Fish Barrier Removal | Bremerton Public Works | 2,409,000 | 424,995 | 2,833,995 | 35,865,000 |
| 19 | 23-1927 P | Derby Creek Barrier Design | Cascade Col Fish Enhance Group | 350,000 | - | 350,000 | 36,215,000 |
| 20 | 23-1928 R | Derby Creek Barrier Correction | Cascade Col Fish Enhance Group | 335,000 | 60,500 | 395,500 | 36,550,000 |
| 21 | 23-1870 P | Swamp Creek Barrier Designs | Kittitas Conservation Trust | 495,000 | 205,000 | 700,000 | 37,045,000 |
| 22 | 23-1918 R | Dowans Creek Private Barrier Removal | Wild Salmon Center | 1,049,000 | 188,872 | 1,237,872 | 38,094,000 |
| 23 | 23-1924 P | Derby Canyon Orchards Barrier Design | Chelan County | 208,000 | - | 208,000 | 38,302,000 |
| 24 | 23-1797 R | McCollum Park - North Creek Fish Barrier Correctio | Adopt A Stream Foundation | 365,000 | 66,500 | 431,500 | 38,667,000 |
| 25 | 23-1865 P | Lapham Road Wyant Creek Fish Passage Design | Cowlitz County | 383,000 | 67,500 | 450,500 | 39,050,000 |
| 26 | 23-1834 R | Cooke Creek RM 3.86 Fish Passage Restoration | Kittitas Co Conservation Dist | 340,000 | 63,996 | 403,996 | 39,390,000 |
| 27 | 23-1920 R | Schoolhouse Creek (Coweeman) Culvert Replacement | Lower Columbia Fish Enhancement Group | 403,000 | 72,790 | 475,790 | 39,793,000 |
| 28 | 23-1930 R | Eagle Creek Barrier 601644 Correction | Chelan County | 414,000 | 73,031 | 487,031 | 40,207,000 |
| 29* | 23-1789 P | Boone Crk at Jackson Hwy Fish Passage Design | Lewis County Public Works | 382,000 | 67,382 | 449,382 | 40,589,000 |
| 30 | 23-1790 P | Boone Crk at Park Fish Passage Design | Lewis County Public Works | 425,000 | 74,875 | 499,875 | 41,014,000 |
| 31 | 23-1863 P | South Toutle Road Outlet Creek Fish Passage Design | Cowlitz County | 408,000 | 72,000 | 480,000 | 41,422,000 |
| 32 | 23-1824 R | Whiskey Creek Barriers RM 1.5-1.7, Ellensburg | Mid-Columbia Fisheries | 500,000 | 89,200 | 589,200 | 41,922,000 |
| 33 | 23-1792 P | Center Road MP 3.23 Fish Barrier Removal | Jefferson County | 505,000 | 89,100 | 594,100 | 42,427,000 |
| 34 | 23-1919 R | Johnson Creek Fish Passage Site 606517 | Colville Confederated Tribes | 418,000 | 79,190 | 497,190 | 42,845,000 |
| 35 | 23-1934 P | Gage Creek Culvert #80001332 Hoko Ozette Rd | North Olympic Salmon Coalition | 417,000 | 73,451 | 490,451 | 43,262,000 |
| 36 | 23-1944 P | Crystal Creek | Trout Unlimited Incorporated | 300,000 | - | 300,000 | 43,562,000 |
| 37 | 23-1922 R | Fauntleroy Cr. Culvert Replacement at 45th Ave SW | Seattle Public Utilities | 3,900,000 | 17,258,000 | 21,158,000 | 47,462,000 |
| 38 | 23-1947 R | Carpenter Creek Sheffield CR136 | Skagit Fish Enhancement Group | 248,000 | 43,680 | 291,680 | 47,710,000 |
| 39 | 23-1845 R | Burley Creek at Spring Creek Road | Kitsap County Public Works | 4,501,000 | 794,250 | 5,295,250 | 52,211,000 |
| 40* | 23-1871 P | Lewis & Clark State Park Fish Barrier Removal | State Parks and Recreation Commission | 345,000 | - | 345,000 | 52,556,000 |
| 41 | 23-1940 R | Lower Day Slough Culvert Improvement | Skagit County Public Works | 456,000 | 80,475 | 536,475 | 53,012,000 |
| 42 | 23-1925 P | SEIDEL CREEK MULTIPLE FISH BARRIER CORRECTION DESI | Adopt A Stream Foundation | 103,000 | - | 103,000 | 53,115,000 |
| 43 | 23-1785 P | Point Hill Crk at Wildwood Fish Passage Design | Lewis County Public Works | 362,000 | 63,765 | 425,765 | 53,477,000 |
| 44 | 23-1829 R | Camp Cr. at Monte Elma Rd. Fish Passage Const. | Chehalis Basin FTF | 614,000 | 108,370 | 722,370 | 54,091,000 |
| 45 | 23-1832 R | NC 213 Norway Park Creek at Pavilion Dr | Skagit Fish Enhancement Group | 423,000 | 74,558 | 497,558 | 54,514,000 |
| 46 | 23-1828 R | Logan Creek Barrier Removal, Site NC138 | Mount Vernon | 1,854,000 | 327,159 | 2,181,159 | 56,368,000 |
| 47 | 23-1802 R | BR #24203-B - Canyon Rd. E.at Canyon Creek | Pierce County of | 3,850,000 | 709,000 | 4,559,000 | 60,218,000 |
| 48* | 23-1938 R | North Creek Culvert Replacement Project | Gig Harbor Public Works | 4,590,000 | 823,518 | 5,413,518 | 64,808,000 |
| 49 | 23-1932 R | Lorenzan Creek Restoration | Skagit County Public Works | 3,153,000 | 557,390 | 3,710,390 | 67,961,000 |
| 50 | 23-1837 P | Thornton A. Sullivan Park Culvert Replacement | Everett City of | 359,000 | 63,500 | 422,500 | 68,320,000 |
| 51 | 23-1931 P | 36th St culvert barrier correction | Lake Stevens | 225,000 | 40,000 | 265,000 | 68,545,000 |
| 52 | 23-1848 P | Logan Creek Barrier Removal, Site NC137 | Mount Vernon | 349,000 | - | 349,000 | 68,894,000 |
| 53 | 23-1933 P | Lorenzan Creek at Concrete Road - Design | Skagit County Public Works | 200,000 | - | 200,000 | 69,094,000 |
| 54 | 23-1921 P | Fauntleroy Cr Culvert Replacement at Calif. Ave SW | Seattle Public Utilities | 1,495,000 | 770,000 | 2,265,000 | 70,589,000 |
| 55 | 23-1948 R | Barnabee Farms Springbrook Creek Rest. | Bainbridge Island Land Trust | 218,000 | 176,100 | 394,100 | 70,807,000 |
| Total | | | | 70,807,000 | 30,903,912 | 101,710,912 | |

WDFW Program Administration** 3,180,000

RCO Program Administration** 3,203,000

Total Program Funding Request 77,190,000

*Qualitative Habitat Assessment Value used as a tie breaker for project ranking.

** Administrative rate of 4.12% for WDFW and 4.15% of the total program cost being sought for program administration

8.20.24 Cost Increase Subcommittee slides

FBRB Draft Proposed Project Funding List 2025-2027

Kaylee Kautz
Fish Passage Scoping Section Manager
Habitat Program



| Date | Task | Description |
|------------------------|---|--|
| <u>October 2, 2023</u> | PRISM Open for Applications | PRISM Online accepts applications for 2023-2025 biennium grants. |
| <u>October 5, 2023</u> | Application Workshop | RCO and Washington Department of Fish and Wildlife (WDFW) conduct application workshop. |
| January 18, 2024 | Applications Due | Submit complete applications in PRISM. |
| January-April 2024 | RCO and WDFW Review Applications | RCO reviews applications for eligibility and completeness. WDFW conducts on-site reviews of barriers. Applicants may be asked to update applications during this review period. Applicants may request applications be returned for editing. |
| May 2, 2024 | Final Application Revision Deadline | Applicants submit final applications addressing WDFW and RCO comments. Applications cannot be changed after this date. |
| May 3 to August 2024 | WDFW Scores Complete Applications | WDFW scores, ranks, and recommends projects for funding to the Brian Abbott Fish Barrier Removal Board (FBRB). Ranking will be complete before the August board meeting. |
| August 2024 | FBRB Approves List of Prioritized Project | At its August meeting , the FBRB approves a list of prioritized projects to forward to the Legislature for funding consideration in the 2025-2027 biennium. |
| TBD in 2025 | Grants Awarded | Funding dependent on approval of the state capital budget approval. Grants available July 1, 2025. |



Acknowledgements

Tom Jameson – FBRB Chair

RCO

- Alice Rubin
- John Foltz
- Josh Lambert
- Christy Rains

WDFW Inventory & Assessment

- Tim Young, acting Section Manager
- Crews – up to 5 crews (10 techs) for ~7 months

WDFW IT & Database Manager

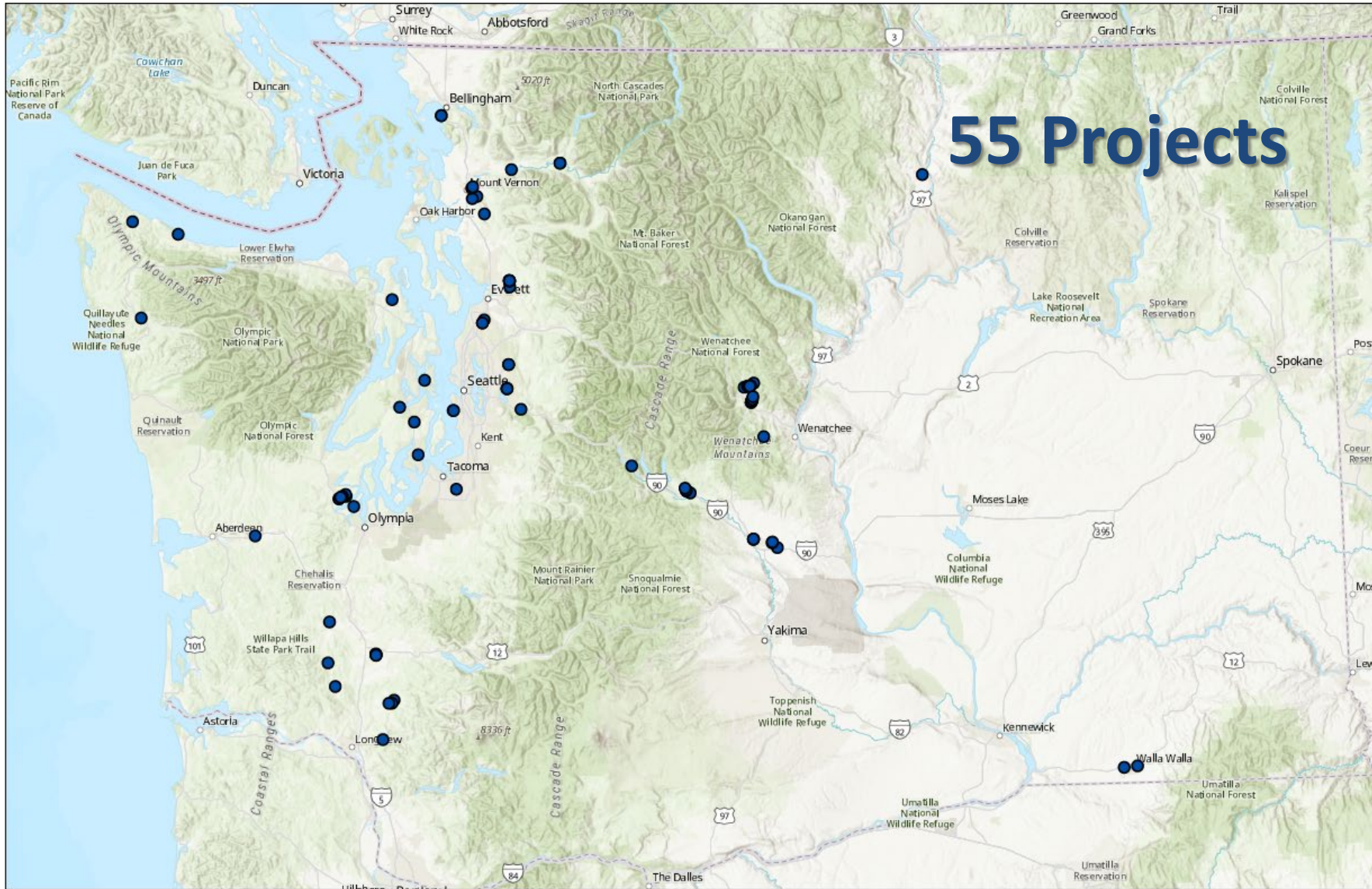
- Rachel Bouchillon

WDFW Scoping TRT

- Dave Collins
- Joel Ingram
- Casey Costello
- Julie Grobelny
- Amber Martens
- Dan Coffman

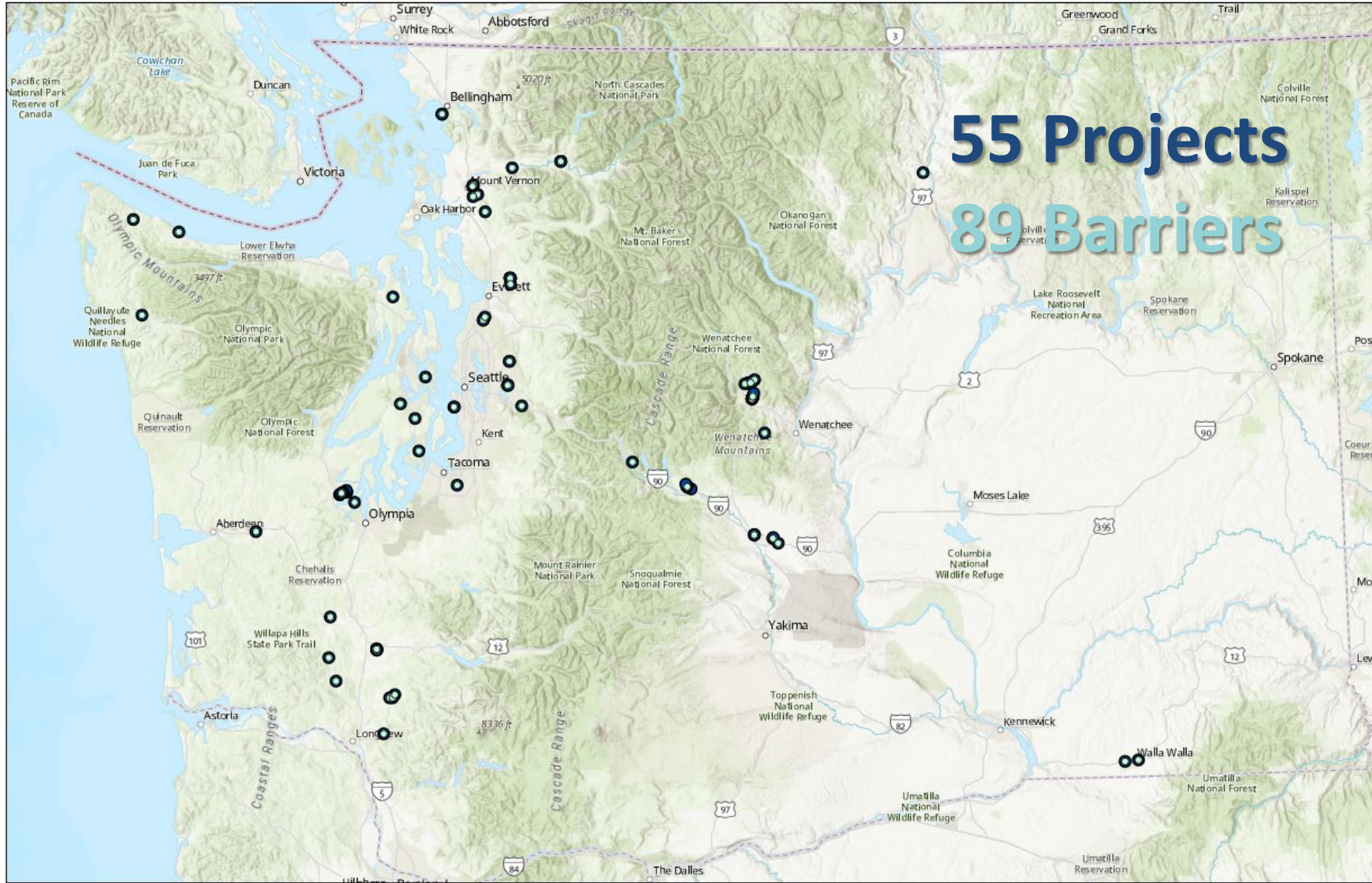
- Adam Fleming
- Dan Barrett
- Chris Clemons
- Kaylee Kautz





25-27 Brian Abbott Fish Barrier Removal Board Projects





25-27 Brian Abbott Fish Barrier Removal Board Projects



Overall Summary

55 Proposed Projects

- 24 Planning Projects
- 31 Restoration Projects
- ~89 Barriers

Costs – No Cutoff

- Grant Request : \$70,807,000
- Admin (8.27%) : \$6,383,000*
- Total Request : \$77,190,000

Project Ownership

- 12 City-Owned
- 23 County-Owned
- 15 Privately Owned
- 4 multiple ownership
- 1 unknown ownership

FBRB Priority Watersheds

- 18 Projects



Previous Rounds Comparison

| <u>2017-19</u> | <u>2019-21</u> | <u>2021-23</u> | <u>2023-25</u> | <u>2025-27</u> |
|--------------------|--------------------|--------------------|----------------------|---------------------|
| 19 Project apps | 56 Project apps | 88 Project apps | 102 Project apps | 55 Project apps |
| ~\$18.9M | ~\$24.7M | ~\$26.8M | ~\$48.4M | TBD |
| | | | ~\$25M in PROTECT | ~\$47M in PROTECT |
| 13 projects funded | 52 projects funded | 21 projects funded | 61+ projects funded* | TBD projects funded |

Costs – No Cutoff

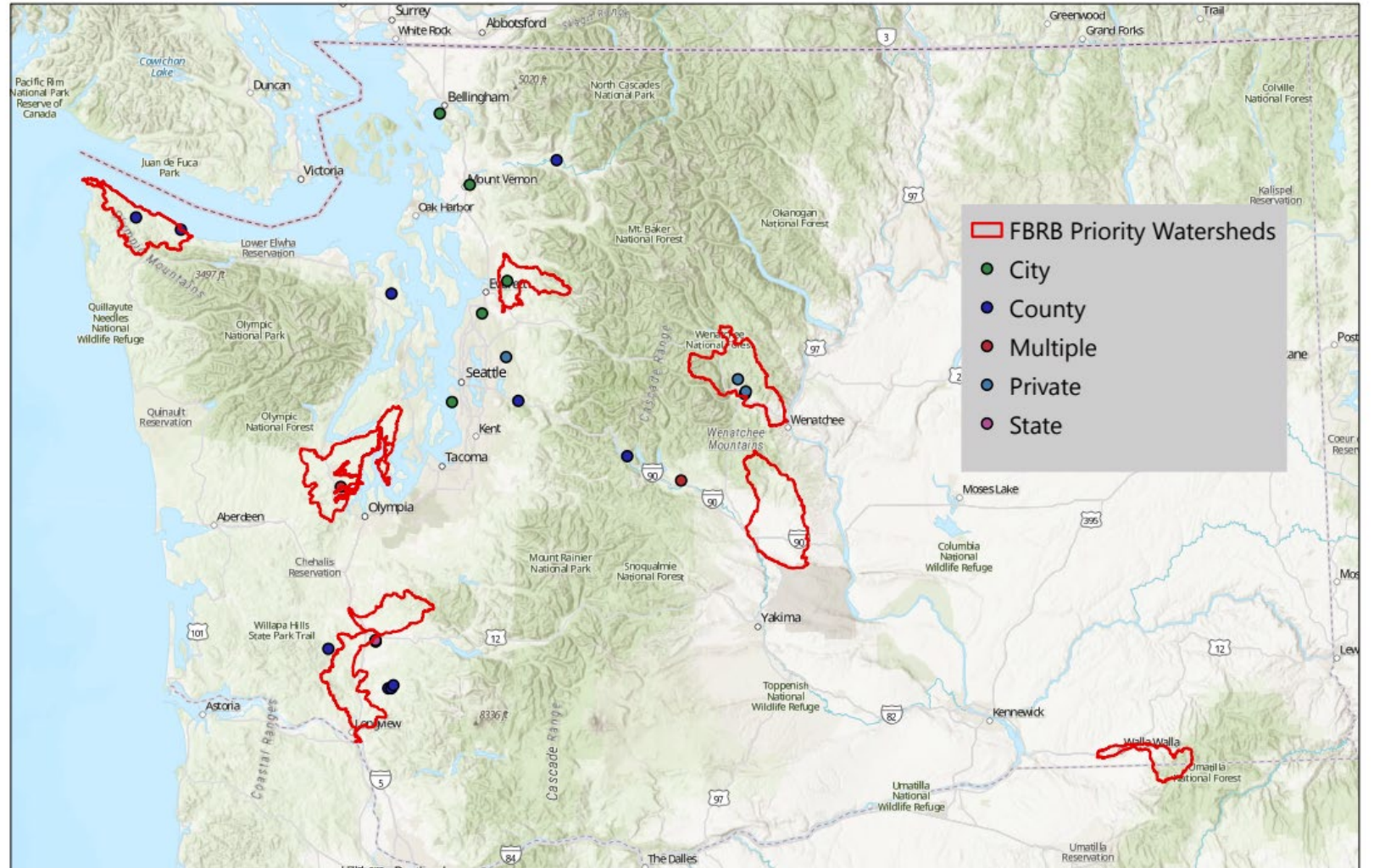
- Grant Request : \$70,807,000
- Admin : \$638,3000*
- Total Request : \$77,190,000



Planning Projects

24 Proposed Projects

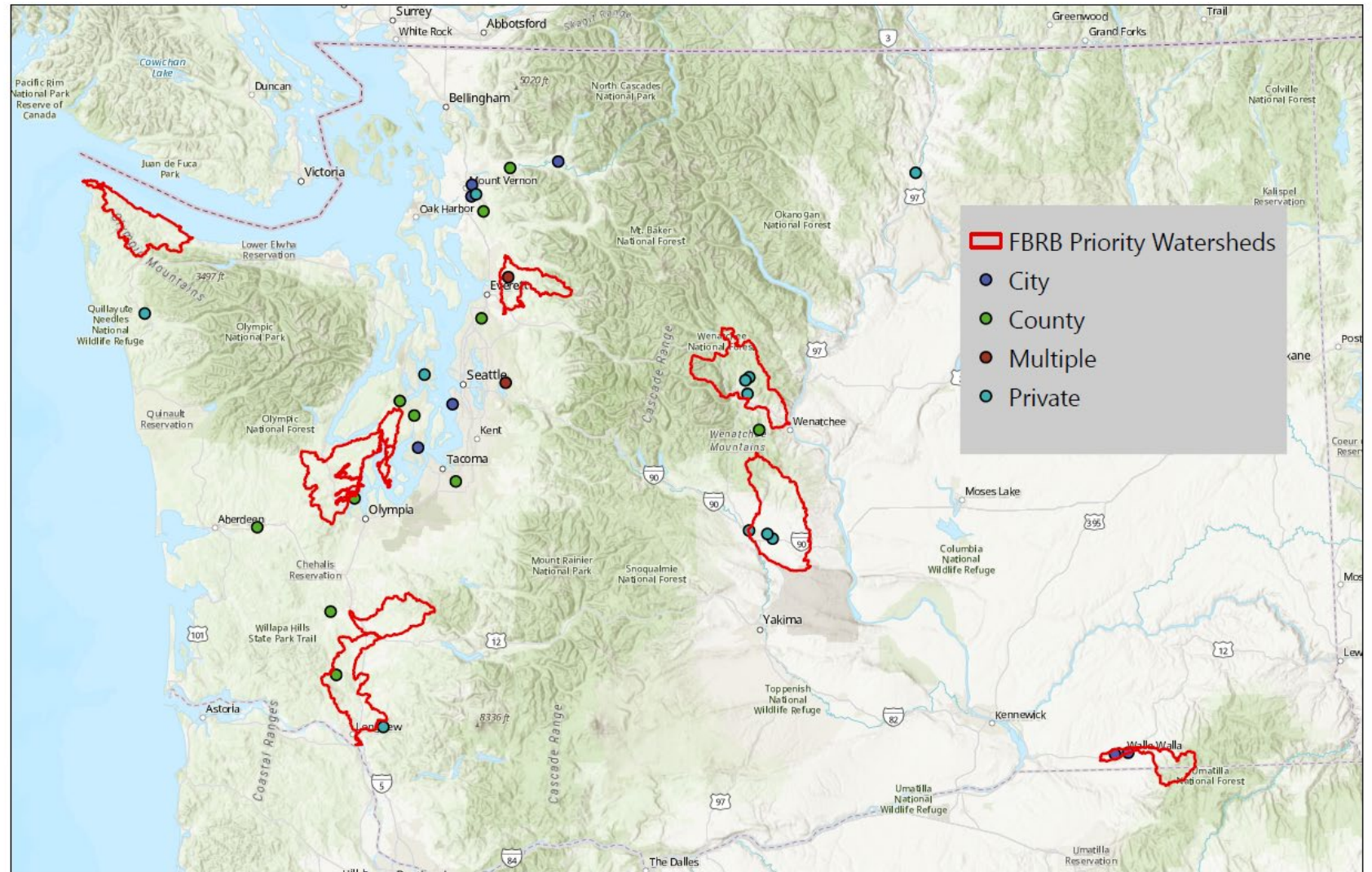
Grant Request: ~\$14.4M



Restoration

31 Proposed Projects

Grant Request: ~\$56.4M



Grant Request Breakdown

- Grant Request - \$ by ownership or Tribal sponsor:
 - County - ~\$25.4M
 - City - ~\$25.6 M
 - Tribe sponsor - ~\$0.5M
 - Private - ~\$6M

*Does not include Administrative costs for WDFW or RCO



Quick FYI – no action required

- 6 projects propose roughened channel, no tide gates.
 - All eligible and have been ranked.
 - Board request of RCO-Feedback and adjustment from sponsors.
 - Just FYI in case future discussions, you're aware.
- Multiple projects on the same stream, sequence check-in
 - i.e. multiple sponsors, project types, same sponsor strategic sequence
 - Reviewed scores and rank to ensure sequence was appropriate
 - QHA used to resolve ties*



List Snapshot

Projects Ranked 1-10 ~\$20M (conservative funding amount)

~35+ miles of habitat gain upstream

~17 miles of habitat accessible with no downstream barriers



Questions or Motion

Preliminary Draft: 8-20-2024

Brian Abbott Fish Barrier Removal Board 2025-2027 - Ranked List

| Rank | Project Number and Type | Project Name | Grant Applicant | Grant Request | Applicant Match | Project Total | Cumulative Total Grant Request |
|-------|-------------------------|--|---------------------------------------|---------------|-----------------|---------------|--------------------------------|
| 1 | 23-1862 R | Allender Road Stillwater Creek Fish Passage | Cowlitz County | 2,894,000 | 510,600 | 3,404,600 | 2,894,000 |
| 2 | 23-1898 P | Eagle Creek Five Fish Passage Barriers | Chelan County | 346,000 | - | 346,000 | 3,240,000 |
| 3 | 23-1793 R | Mill Creek Fish Passage - Gose St. | Tri-State Steelheaders Inc | 2,815,000 | 800,000 | 3,615,000 | 6,055,000 |
| 4 | 23-1857 R | Coleman Creek at RM 5.22 Fish Passage Restoration | Kittitas Co Conservation Dist | 764,000 | 134,926 | 898,926 | 6,819,000 |
| 5 | 23-1814 P | Padden Cr Estuary Fish Passage Improvements | Bellingham | 1,572,000 | 277,275 | 1,849,275 | 8,391,000 |
| 6 | 23-1946 P | Little Skookum Inlet Tributaries Fish Passage | Mason County | 2,963,000 | 522,810 | 3,485,810 | 11,354,000 |
| 7 | 23-1949 R | Carpenter Creek Hickox Rd Culvert Replacement | Skagit Fish Enhancement Group | 3,194,000 | 563,526 | 3,757,526 | 14,548,000 |
| 8 | 23-1795 R | Mill Creek Fish Passage - Roosevelt to Tausick | Tri-State Steelheaders Inc | 3,070,000 | 541,653 | 3,611,653 | 17,618,000 |
| 9* | 23-1908 R | Sand Creek culvert replacement | Chelan County | 394,000 | 69,410 | 463,410 | 18,012,000 |
| 10 | 23-1788 R | Van Ornum Crk at Bunker Crk Rd Fish Passage Constr | Lewis County Public Works | 1,781,000 | 314,245 | 2,095,245 | 19,793,000 |
| 11 | 23-1813 R | Little Pilchuck Creek Fish Passage Restoration | Snohomish Co Surface Water | 4,677,000 | 825,355 | 5,502,355 | 24,470,000 |
| 12 | 23-1822 P | SE High Point Way Culvert Replacement | King County Road Svc Div | 1,307,000 | 230,565 | 1,537,565 | 25,777,000 |
| 13 | 23-1943 R | George Davis Creek Fish Passage Construction | Sammamish City of | 4,455,000 | 1,885,000 | 6,340,000 | 30,232,000 |
| 14 | 23-1786 P | Butler Creek-Pillar Point Park Culvert #993889 | North Olympic Salmon Coalition | 540,000 | 95,196 | 635,196 | 30,772,000 |
| 15 | 23-1945 R | Eagle Creek Full Barrier Removal | Cascadia Conservation District | 322,000 | 56,736 | 378,736 | 31,094,000 |
| 16 | 23-1806 R | 61st Ave. NW at Frye Cove Tributary Fish Passage | Thurston County Public Works | 1,954,000 | 346,468 | 2,300,468 | 33,048,000 |
| 17 | 23-1864 P | South Tootle Road Studebaker Creek Fish Passage | Cowlitz County | 408,000 | 72,000 | 480,000 | 33,456,000 |
| 18 | 23-1830 R | Parish Creek Fish Barrier Removal | Bremerton Public Works | 2,409,000 | 424,995 | 2,833,995 | 35,865,000 |
| 19 | 23-1927 P | Derby Creek Barrier Design | Cascade Col Fish Enhance Group | 350,000 | - | 350,000 | 36,215,000 |
| 20 | 23-1928 R | Derby Creek Barrier Correction | Cascade Col Fish Enhance Group | 335,000 | 60,500 | 395,500 | 36,550,000 |
| 21 | 23-1870 P | Swamp Creek Barrier Designs | Kittitas Conservation Trust | 495,000 | 205,000 | 700,000 | 37,045,000 |
| 22 | 23-1918 R | Dowans Creek Private Barrier Removal | Wild Salmon Center | 1,049,000 | 188,872 | 1,237,872 | 38,094,000 |
| 23 | 23-1924 P | Derby Canyon Orchards Barrier Design | Chelan County | 208,000 | - | 208,000 | 38,302,000 |
| 24 | 23-1797 R | McCullum Park - North Creek Fish Barrier Correctio | Adopt A Stream Foundation | 365,000 | 66,500 | 431,500 | 38,667,000 |
| 25 | 23-1865 P | Lapham Road Wyant Creek Fish Passage Design | Cowlitz County | 383,000 | 67,500 | 450,500 | 39,050,000 |
| 26 | 23-1834 R | Cooke Creek RM 3.86 Fish Passage Restoration | Kittitas Co Conservation Dist | 340,000 | 63,996 | 403,996 | 39,390,000 |
| 27 | 23-1920 R | Schoolhouse Creek (Coweeman) Culvert Replacement | Lower Columbia Fish Enhancement Group | 403,000 | 72,790 | 475,790 | 39,793,000 |
| 28 | 23-1930 R | Eagle Creek Barrier 601644 Correction | Chelan County | 414,000 | 73,031 | 487,031 | 40,207,000 |
| 29* | 23-1789 P | Boone Crk at Jackson Hwy Fish Passage Design | Lewis County Public Works | 382,000 | 67,382 | 449,382 | 40,589,000 |
| 30 | 23-1790 P | Boone Crk at Park Fish Passage Design | Lewis County Public Works | 425,000 | 74,875 | 499,875 | 41,014,000 |
| 31 | 23-1863 P | South Tootle Road Outlet Creek Fish Passage Design | Cowlitz County | 408,000 | 72,000 | 480,000 | 41,422,000 |
| 32 | 23-1824 R | Whiskey Creek Barriers RM 1.5-1.7, Ellensburg | Mid-Columbia Fisheries | 500,000 | 89,200 | 589,200 | 41,922,000 |
| 33 | 23-1792 P | Center Road MP 3.23 Fish Barrier Removal | Jefferson County | 505,000 | 89,100 | 594,100 | 42,427,000 |
| 34 | 23-1919 R | Johnson Creek Fish Passage Site 606517 | Colville Confederated Tribes | 418,000 | 79,190 | 497,190 | 42,845,000 |
| 35 | 23-1934 P | Gage Creek Culvert #80001332 Hoko Ozette Rd | North Olympic Salmon Coalition | 417,000 | 73,451 | 490,451 | 43,262,000 |
| 36 | 23-1944 P | Crystal Creek | Trout Unlimited Incorporated | 300,000 | - | 300,000 | 43,562,000 |
| 37 | 23-1922 R | Fauntleroy Cr. Culvert Replacement at 45th Ave SW | Seattle Public Utilities | 3,900,000 | 17,258,000 | 21,158,000 | 47,462,000 |
| 38 | 23-1947 R | Carpenter Creek Sheffield CR136 | Skagit Fish Enhancement Group | 248,000 | 43,680 | 291,680 | 47,710,000 |
| 39 | 23-1845 R | Burley Creek at Spring Creek Road | Kitsap County Public Works | 4,501,000 | 794,250 | 5,295,250 | 52,211,000 |
| 40* | 23-1871 P | Lewis & Clark State Park Fish Barrier Removal | State Parks and Recreation Commission | 345,000 | - | 345,000 | 52,556,000 |
| 41 | 23-1940 R | Lower Day Slough Culvert Improvement | Skagit County Public Works | 456,000 | 80,475 | 536,475 | 53,012,000 |
| 42 | 23-1925 P | SEIDEL CREEK MULTIPLE FISH BARRIER CORRECTION DESI | Adopt A Stream Foundation | 103,000 | - | 103,000 | 53,115,000 |
| 43 | 23-1785 P | Point Hill Crk at Wildwood Fish Passage Design | Lewis County Public Works | 362,000 | 63,765 | 425,765 | 53,477,000 |
| 44 | 23-1829 R | Camp Cr. at Monte Elma Rd. Fish Passage Const. | Chehalis Basin FTF | 614,000 | 108,370 | 722,370 | 54,091,000 |
| 45 | 23-1832 R | NC 213 Norway Park Creek at Pavilion Dr | Skagit Fish Enhancement Group | 423,000 | 74,558 | 497,558 | 54,514,000 |
| 46 | 23-1828 R | Logan Creek Barrier Removal, Site NC138 | Mount Vernon | 1,854,000 | 327,159 | 2,181,159 | 56,368,000 |
| 47 | 23-1802 R | BR #24203-B - Canyon Rd. E at Canyon Creek | Pierce County of | 3,850,000 | 709,000 | 4,559,000 | 60,218,000 |
| 48* | 23-1938 R | North Creek Culvert Replacement Project | Gig Harbor Public Works | 4,590,000 | 823,518 | 5,413,518 | 64,808,000 |
| 49 | 23-1932 R | Lorenzan Creek Restoration | Skagit County Public Works | 3,153,000 | 557,390 | 3,710,390 | 67,961,000 |
| 50 | 23-1837 P | Thornton A. Sullivan Park Culvert Replacement | Everett City of | 359,000 | 63,500 | 422,500 | 68,320,000 |
| 51 | 23-1931 P | 36th St culvert barrier correction | Lake Stevens | 225,000 | 40,000 | 265,000 | 68,545,000 |
| 52 | 23-1848 P | Logan Creek Barrier Removal, Site NC137 | Mount Vernon | 349,000 | - | 349,000 | 68,894,000 |
| 53 | 23-1933 P | Lorenzan Creek at Concrete Road - Design | Skagit County Public Works | 200,000 | - | 200,000 | 69,094,000 |
| 54 | 23-1921 P | Fauntleroy Cr Culvert Replacement at Calif. Ave SW | Seattle Public Utilities | 1,495,000 | 770,000 | 2,265,000 | 70,589,000 |
| 55 | 23-1948 R | Barnabee Farms Springbrook Creek Rest. | Bainbridge Island Land Trust | 218,000 | 176,100 | 394,100 | 70,807,000 |
| Total | | | | 70,807,000 | 30,903,912 | 101,710,912 | |

WDFW Program Administration** 3,180,000
 RCO Program Administration** 3,203,000
 Total Program Funding Request 77,190,000

*Qualitative Habitat Assessment Value used as a tie breaker for project ranking.

** Administrative rate of 4.12% for WDFW and 4.15% for RCO of the total program cost is being sought for program administration



Looking Forward

- Statewide Fish Passage Strategy Updates
- Revisit Match Conversation
- Cost Conversations
- RFP/ Manual Updates



Construction Season Ending







Questions?

Thank you!





FBRB Cost Increases: Subcommittee Recommendations 8/20/24

Cost Increase Requests for:

- 21-1391: Carpenter Creek
- 21-1412: Eagle Creek
- 21-1404: Padden Creek

21-1391: Carpenter Creek

Sponsor: Skagit Fisheries Enhancement Group (SFEG)

Key Discussion Points:

- \$177,323 cost increase request to complete final designs and permitting.
- Request due to inflation since the project was submitted 3 years ago.

Subcommittee Recommendation: Approve the cost increase.

Move to decision point – Approve cost increase of \$177,323 based upon the cost increase request and the subcommittee meeting.

21-1412: Eagle Creek

Sponsor: Chelan County Natural Resource Department

Key Discussion Points:

- \$452,582 requested cost increase for construction.
- Cost increase largely due to inflation.
- Project has 4 barriers. This request fulfills funding need to removal all of them.
- Sponsor secured \$311,764 in additional match funds from other grants.
- Bid price remains valid as long as the project breaks ground next year.

Subcommittee Recommendation: Approve the cost increase.

Move to decision point – Approve cost increase of \$452,582 based upon the cost increase request and the subcommittee meeting.

Update: 21-1404: Padden Creek

Sponsor: City of Bellingham

Key Discussion Points:

- \$2,441,044 cost increase request for design and construction changes
 - Largest request to date.
- Sponsor proposed bringing \$473,500 of match in addition to this request.
 - RCO wants the sponsor to bring more match or find additional grant funding.
- Incomplete geotech analysis at the time of application led to significant design changes to bridge infrastructure, traffic controls, mobilization costs, and material costs.
 - Subcommittee concerned about additional future cost increase requests since design is not complete.
- Sponsor has 3 downstream barriers funded for removal by FBRB. Cost increases expected for each of these (see next slide).
 - Subcommittee suggested prioritizing these and better understanding the cost increase needs.

Subcommittee Recommendation: Not ready for decision. Sponsor and TRT need to collaborate.

- Increase A&E funding to help them reach final design by reallocating their current reward.

FBRB 23-1814
Unknown
passability - tidal

Estuary

12th St Site

14th Street
Project Site

FBRB 21-1419
33% passability
WS Drop (Fishway)

Daylighting
Project

FBRB 21-1418
67% passability
Depth (Fishway)

Padden Creek

24th - 30th ST
Restoration

Daylighting
Project

FBRB 21-1404
33% passability
Slope

SR11 (WSDOT) Site
30th St Site

1-5 (WSDOT) Site

City of Bellingham Padden Creek FBRB projects
23-1814: no cost overrun reported, new application
21-1404: \$2.4 million (officially submitted request)
21-1419: \$800,00 (estimated only, not a request)
21-1419: \$1.4 million (estimate only, not a request)

Possible Future Discussion Topics

- How can the Technical Review Team (TRT) identify major design issues earlier in the review process to minimize the risk of cost increases?
- Should costs have a great effect on project scores more?
- Should the Board establish a cost increase request cap?

FBRB Amendment - Eagle Creek

BRIAN ABBOTT

Fish Barrier Removal Board

Amendment Form

Date: 7/24/2024

RCO Project Number: 21-1412

Sponsor Name: Chelan County Natural Resource Department

Project Name: Eagle Creek Four Barrier Corrections

Type of Amendment: Cost Increase Time Extension Scope Change

Justification: For cost increases, describe the need and specifically what the money will be used for. Please note: a grant cost increase requires the sponsor to increase its total match contribution to maintain the agreement's original cost share percentages. For time extensions that would place the project end date more than four years beyond the project start date, describe the reason and background for the delay and provide a timeline for project completion. For scope changes, describe the reason and what work types or elements of the project will change. Specify changes in quantities and/or metrics of project elements as necessary.

Cost Increase:

This project has experienced circumstances to warrant this cost increase request. This project includes construction of the four lowest barrier culvert replacements on Eagle Creek in Chelan County, as designed under project 20-1740. The project went out to bid in Spring of 2024. The project bid package was structured such that contractors could bid on (a) the lowest two culverts, (b) the lowest three culverts, or (c) all four culverts. Unfortunately, the bid prices received for the full project (i.e., all four culverts) were higher than available project funding. The updated cost estimate spreadsheet accounts for cost increases reflected in the bids received. After coordinating with RCO, the project was awarded for construction of the lowest two culverts in Fall of 2024. We are now seeking additional funding to facilitate constructing the remaining two barrier culvert replacements in 2025. Additionally, we are working with the Federal Highway Administration on an agreement for funding allocated to this project, which would secure the required match for this cost increase. The original total project budget was \$1,425,724 with \$1,211,865 in BAFBRB grant funds contributing. The new total project budget is \$2,190,070 for a total increase of \$764,346. The BAFBRB cost increase request is 452,582 of this with Chelan County bringing an additional \$311,764 in anticipated match.

Supporting Documents Provided. (check all that apply):

- An updated Cost Estimate Spreadsheet composed of original budget with cost increase provided in a separate column clearly illustrating where costs have changed.
- An updated Project Milestone Worksheet
- Preliminary design package including design drawings and design report (Manual 22, Appendix C)

BRIAN ABBOTT

Fish Barrier Removal Board

Amendment Form

Review:



Approved: Yes No

Approved: Yes No

Date: [Click here to enter a date.](#)

Date: [Click here to enter a date.](#)

Name: [Click here to enter text.](#)

Name: [Click here to enter text.](#)

Reason

Reason

| | |
|--|--|
| | |
|--|--|

FBRB Amendment - Carpenter Creek

BRIAN ABBOTT

Fish Barrier Removal Board

Amendment Form

Date: 6/25/2024

RCO Project Number: 21-1391

Sponsor Name: Skagit Fisheries Enhancement Group (SFEG)

Project Name: Hickox Road Carpenter Creek

Type of Amendment: Cost Increase Time Extension Scope Change

Justification: For cost increases, describe the need and specifically what the money will be used for. Please note: a grant cost increase requires the sponsor to increase its total match contribution to maintain the agreement's original cost share percentages. For time extensions that would place the project end date more than four years beyond the project start date, describe the reason and background for the delay and provide a timeline for project completion. For scope changes, describe the reason and what work types or elements of the project will change. Specify changes in quantities and/or metrics of project elements as necessary.

SFEG would like to request an additional \$177,323 to complete the final designs and permitting for the Hickox Road-Carpenter Creek project. The total project cost now also includes \$65,500 that is contributed in Match by the City of Mount Vernon, who are the landowners.

This funding increase is necessary because the original application was submitted in 2021, and costs have increased significantly during this time due to inflation. Our current costs estimates are supported by the attached documents "Carpenter Creek Scope & Fee Phase 1" and "Phase 2 Final Design Scope of Services", both of which were written for the City of Mount Vernon by the selected project engineering consultant, David Evans & Associates (DEA).

SFEG was informed in Jan 2023 that we would be receiving FBRB funds to complete this project. Working with the City of Mount Vernon, we were able to secure an engineering firm by Feb 2024, and DEA was able to produce Preliminary (30%) designs by May 2, 2024 for the final submission deadline for the 2025-2027 FBRB grant round. All contract deliverables from "Phase 1" (as described in attached docs) will be completed by June 27, 2024. At this time, all of the original project funds will be spent.

In order to complete "Phase 2", which includes 60% and final designs, as well as permitting, we will need supplemental funds. We understand that salmon recovery dollars are a finite resource, but this project contributes towards our goal of complete fish passage restoration in the Carpenter Creek system. We have secured \$1.4 million to date towards culvert replacement at the remaining seven fish passage barriers (see attached map). Carpenter Creek is a large system that flows into Hill Ditch south of Mount Vernon and further downstream, the South Fork Skagit River delta. Carpenter Creek has documented use of winter steelhead, summer steelhead, kokanee, coho and coastal/resident cutthroat trout, and is gradient accessible to pink, chum and Chinook salmon. The upper reaches of this watershed are well-forested with cold water, flowing through wetlands and rural residences, and all areas of the creek support healthy riparian habitat.

Supporting Documents Provided. (check all that apply):

BRIAN ABBOTT

Fish Barrier Removal Board

Amendment Form

- An updated Cost Estimate Spreadsheet composed of original budget with cost increase provided in a separate column clearly illustrating where costs have changed.
- An updated Project Milestone Worksheet
- Preliminary design package including design drawings and design report (Manual 22, Appendix C)

Review:



Approved: Yes No

Approved: Yes No

Date: [Click here to enter a date.](#)

Date: [Click here to enter a date.](#)

Name: [Click here to enter text.](#)

Name: [Click here to enter text.](#)

Reason

Reason

| | |
|--|--|
| | |
|--|--|

FBRB Amendment - Padden Creek

BRIAN ABBOTT

Fish Barrier Removal Board

Amendment Form

Date: 5/31/2024

RCO Project Number: 21-1404

Sponsor Name: City of Bellingham

Project Name: Padden Cr at 30th St Fish Passage Improvement

Type of Amendment: Cost Increase Time Extension Scope Change

Justification: For cost increases, describe the need and specifically what the money will be used for. Please note: a grant cost increase requires the sponsor to increase its total match contribution to maintain the agreement's original cost share percentages. For time extensions that would place the project end date more than four years beyond the project start date, describe the reason and background for the delay and provide a timeline for project completion. For scope changes, describe the reason and what work types or elements of the project will change. Specify changes in quantities and/or metrics of project elements as necessary.

Enclosed: Amendment form, Justification letter, revised Cost Estimate worksheet, detailed engineers cost estimate, and map illustrating all City of Bellingham Padden Cr projects

OGM Summary of letter and revised budget:

Project sponsor states project cost have increased \$2,923,543 since original FBRB application submittal. Sponsor is requesting an additional \$2,441,044 and will increase match in the amount of \$473,500 to maintain approximately 15% program requirement. Primary reasons for cost overrun include:

- 1) The preliminary design submitted as part of the FBRB application was based on an incomplete geotechnical analysis, instead using subsurface information obtained from WSDOT's Padden Creek Sr-11 crossing, about 500 ft upstream. Onsite geotechnical analysis was completed May 2023 and showed poorer than expected soils requiring major modifications in piling size, footing, pavement thickness and structural walls. Addressing new soil conditions will increase bridge infrastructure costs beyond existing planned contingencies by \$1,423,543
- 2) Construction season was improperly scoped in the original preliminary design for one season of work whereby 30th street would be fully closed to traffic. Traffic analysis has been completed requiring one lane of traffic to be open at all times, requiring a two-season construction cycle (one lane completed per season) increasing traffic control, and stream diversion costs by \$810,000 and increasing mobilization costs by an additional \$440,000.
- 3) General inflationary costs of materials are cited that exceed planned contingencies by \$250,000
- 4) Costs are based on revised engineer estimates, not bids. The City of Bellingham has determined it is not comfortable moving towards bids with the estimated budget shortfall.
- 5) **Consideration of all funded City of Bellingham projects on Padden Creek:** City of Bellingham was awarded FBRB funds to 3 projects on Padden Creek in the 2023-25

BRIAN ABBOTT

Fish Barrier Removal Board

Amendment Form

biennium. Because the current cost increase (FBRB 21-1404, 30th St) request is upstream of the other two funded barriers RCO requested status updates of the downstream projects. COB has communicated that the two barrier sites (21-1419, 21-1418) below 30th St are also estimated to have cost that exceed current budgets. This has implications for the current request. If a lower downstream project is delayed or not viable due to cost, it may impact or strand FBRB investment upstream. Although, a cost request has only formally been requested for Padden Cr at 30th St, COB has submitted progress reports for the remaining two Padden Creek projects, with general estimates of budget shortfall, as follows. See provided map that shows the location of all COB FBRB projects, including the lowest downstream barriers, associated with 2023 FBRB application 23-1418:

- a. 21-1419 Padden Cr at 12th St. - \$800,000 shortfall
Rationale: TRT requested additional modeling due to the correction being a roughened channel, this additional cost has also delayed construction from 2024 to 2025, increasing costs.
- b. 21-1418 Padden Cr at 14th St. - \$1.4 million shortfall
Rationale: TRT requested additional modeling due to the correction being a roughened channel, this additional cost has also delayed construction from 2024 to 2025, increasing costs.
- c. Note that 12th and 14th street projects are expected to be constructed in a joint construction bid.

Supporting Documents Provided. (check all that apply):

- An updated Cost Estimate Spreadsheet composed of original budget with cost increase provided in a separate column clearly illustrating where costs have changed.
- An updated Project Milestone Worksheet
- Preliminary design package including design drawings and design report (Manual 22, Appendix C)

Review:



Approved: Yes No

Approved: Yes No

Date: [Click here to enter a date.](#)

Date: [Click here to enter a date.](#)

BRIAN ABBOTT

Fish Barrier Removal Board

Amendment Form

Name: Click here to enter text.

Name: Click here to enter text.

Reason

Reason

| | |
|--|--|
| | |
|--|--|

23-25 FBRB Funding Tracking Graphic

2023-25 Biennium Funding: Project Award: **\$45,189,000**

| Rank | Project Name | Grant Applicant | PROTEC | NOAA re Project Award | Running Total |
|---|--|--------------------------------|--------|-----------------------|---------------|
| LEGEND: | | | | | |
| FBRB FUNDED | | | | | |
| FULLY FUNDED OR SPONSOR DECLINED | | | | | |
| PROTECT FUNDED | | | | | |
| NOAA FUNDED | | | | | |
| ECOLOGY FUNDED | | | | | |
| 1 | Damon Creek at Kirkpatrick Road Fish Passage Const | Chehalis Basin FTF | | \$ 740,500 | \$ 740,500 |
| 2 | Sexton Creek Fish Passage Restoration | Snohomish Co Surface Water | | \$ 1,038,190 | \$ 1,778,690 |
| 3 | Johnson Crk Triple Restoration, Hoko-Ozette '22 | North Olympic Salmon Coalition | | \$ - | \$ 1,778,690 |
| 4 | West Fork Grays Fish Passage Project | Cowlitz Indian Tribe | | \$ 295,389 | \$ 2,074,079 |
| 5 | Clear Creek Reconnection | CREST | | \$ 1,874,219 | \$ 3,948,298 |
| 6 | Garlock Road Delameter Creek Fish Passage Project | Cowlitz County of | | \$ 1,657,500 | \$ 5,605,798 |
| 7 | Harper Estuary Barrier Correction | Kitsap County of | x | \$ - | \$ 5,605,798 |
| 8 | Squalicum Cr at Baker Cr Fish Passage Improvement | Bellingham City of | | \$ 4,132,623 | \$ 9,738,421 |
| 9 | MF Newaukum Trib- Kruger Fish Passage Const- FBRB | Lewis County Public Works | | \$ 1,067,870 | \$ 10,806,291 |
| 10 | Mission Creek Subbasin Fish Barrier Removal Design | Chelan Co Natural Resource | | \$ 188,087 | \$ 10,994,378 |
| 11 | Newskah Trib at Newskah Road 2 Fish Passage Const. | Chehalis Basin FTF | | \$ 562,902 | \$ 11,557,280 |
| 12 | Langlois Creek Culvert Replacements (SVT & PSE) | Snoq Vly Watershed Dist | | \$ 1,219,166 | \$ 12,776,446 |
| 13 | Beaver Creek Barriers 603181 and 603183 | Chelan Co Natural Resource | | \$ 78,406 | \$ 12,854,852 |
| 14 | Griggs Creek Private Fish Passage Project | South Puget Sound SEG | | \$ 261,000 | \$ 13,115,852 |
| 15 | Thompson Creek at Thompson Creek Rd. Fish Passage | Thurston County Public Works | | \$ 500,000 | \$ 13,615,852 |
| 16 | Mill Creek Passage - Roosevelt Street | Tri-State Steelheaders Inc | | \$ 1,774,885 | \$ 15,390,737 |
| 17 | Fisher Creek Restoration at Cedardale and Starbird | Skagit County Public Works | x | \$ 240,749 | \$ 15,631,486 |
| 18 | Jones Creek Fish Barrier Removal | Cowlitz Indian Tribe | | \$ 669,484 | \$ 16,300,970 |
| 19 | Naneum Creek at SM 3.75 | Kittitas Co Conservation Dist | | \$ 205,300 | \$ 16,506,270 |
| 20 | Eagle Creek Four Barrier Corrections | Chelan Co Natural Resource | | \$ 1,211,865 | \$ 17,718,135 |
| 21 | Mill Creek Passage - 5th Avenue Bridge | Tri-State Steelheaders Inc | | \$ 2,186,954 | \$ 19,905,089 |
| 22 | Williams Creek Fish Passage Design | Snohomish Co Surface Water | | \$ 462,400 | \$ 20,367,489 |
| 23 | George Davis Creek Fish Passage Construction | Sammamish City of | | \$ 1,300,000 | \$ 21,667,489 |
| 24 | Wisem Creek Barrier Corrections x3 Project, Ph 2 | Trout Unlimited - WA Coast | * | \$ - | \$ 21,667,489 |
| 25 | Naylors Cr. Culvert Replacement Construction | Jefferson Co Public Works | x | \$ 51,609 | \$ 21,719,098 |
| 26 | Stonewater Ranch Passage Improvement Project | Trout Unlimited-WA Water Proj | | \$ 209,750 | \$ 21,928,848 |
| 27 | Lucas Crk Trib at MP 4.39- Fish Passage Const-FBRB | Lewis County Public Works | | \$ 1,045,798 | \$ 22,974,646 |
| 28 | Padden Cr at 14th St Fish Passage Improvement | Bellingham City of | | \$ 1,335,973 | \$ 24,310,619 |
| 29 | Padden Cr at 30th St Fish Passage Improvement | Bellingham City of | | \$ 4,103,719 | \$ 28,414,338 |
| 30 | Berwick Creek at Logan Fish Passage Const - FBRB | Lewis County Public Works | x | \$ - | \$ 28,414,338 |
| 31 | Taylor Creek Fish Passage Improvements | Seattle Public Utilities | | | \$ 28,414,338 |
| ORIGINAL FUNDING LINE | | | | | |
| 32 | Anton & Cedar Creek Fish Passage Restoration | Wild Salmon Center | | \$ 707,780 | \$ 29,122,118 |
| 33 | Padden Cr at 12th St Fish Passage Improvement | Bellingham City of | | \$ 1,615,867 | \$ 30,737,985 |
| 34 | Lucas Crk Trib at MP 4.24- Fish Passage Const-FBRB | Lewis County Public Works | | \$ 1,140,358 | \$ 31,878,343 |
| 35 | Hoko Ozette Rd MP 6.38 80001279 Culvert Replaceme | North Olympic Salmon Coalition | | \$ 408,585 | \$ 32,286,928 |
| 36 | North Fork Goble Creek Fish Passage Design | Cowlitz County of | | \$ 382,500 | \$ 32,669,428 |
| 37 | Carpenter and English Cr Fish Passage Barrier Impr | Skagit Fish Enhancement Group | | \$ 353,351 | \$ 33,022,779 |
| 38 | Black Slough Comprehensive Barrier Removals Design | Whatcom County FCZD | | \$ 207,000 | \$ 33,229,779 |
| 39 | Laughing Jacobs Creek Barrier Removal | Trout Unlimited Inc. | | \$ 755,860 | \$ 33,985,639 |
| 40 | Peoples Creek Fish Passage | Tulalip Tribes | | \$ 329,950 | \$ 34,315,589 |
| 41 | Hoko Ozette Rd MP 2.9 80001331 Culvert Replacemen | North Olympic Salmon Coalition | | \$ 408,329 | \$ 34,723,918 |
| 42 | Beatty Crk at Chelsie Ln Fish Barrier Replacement | South Puget Sound SEG | | \$ 490,000 | \$ 35,213,918 |

| | | | | | | | |
|-----------------------------|--|--------------------------------|--|----|-----------|----|------------|
| 43 | Mill Creek Passage Design— Colville to 3rd | Tri-State Steelheaders Inc | | \$ | - | \$ | 35,213,918 |
| 44 | Carpenter Creek at Cascade Ridge Design | Skagit County Public Works | | \$ | 250,125 | \$ | 35,464,043 |
| 45 | Wright's Creek Culvert and Hatchery Intake Replace | North Olympic Salmon Coalition | | \$ | 479,057 | \$ | 35,943,100 |
| 46 | SE 432nd Street Culvert | King County of | | \$ | 950,000 | \$ | 36,893,100 |
| 47 | Eagle Creek Barrier Design & Replacement 601620 | Chelan Co Natural Resource | | \$ | 354,199 | \$ | 37,247,299 |
| 48 | Elliott Rd Barriers Design | Tulalip Tribes | | \$ | - | \$ | 37,247,299 |
| 49 | Williams Creek #1 | Tulalip Tribes | | \$ | 283,000 | \$ | 37,530,299 |
| 50 | Ennis Creek Fish Passage Design | Port Angeles City of | | \$ | - | \$ | 37,530,299 |
| 51 | Pilchuck Tributary Watt Crossing | Tulalip Tribes | | \$ | - | \$ | 37,530,299 |
| 52 | W. Beeville Loop Road Fish Passage Planning | Trout Unlimited Inc. | | \$ | - | \$ | 37,530,299 |
| 53 | CR 28 East Hickox Road at Carpenter Cr. | Skagit Fish Enhancement Group | | \$ | 192,500 | \$ | 37,722,799 |
| 54 | Secret Creek Fish Passage Design | Snohomish Co Surface Water | | \$ | 501,900 | \$ | 38,224,699 |
| 55 | Barrel Springs and Dry Creek Restoration | Skagit County Public Works | | \$ | 990,531 | \$ | 39,215,230 |
| 56 | Berwick Crk at Bishop Fish Passage Constr - FBRB | Chehalis Port of | | \$ | 1,306,213 | | |
| 57 | Coal Creek Fish Passage Restoration | Trout Unlimited Inc. | | \$ | - | | |
| 58 | W. Beeville Road Fish Passage Planning | Trout Unlimited Inc. | | \$ | 126,050 | | |
| 59 | North Creek Fish Barrier Correction Project at McC | Adopt A Stream Foundation | | \$ | 284,000 | | |
| 60 | Center Road MP 3.23 Fish Barrier Removal | Jefferson Co Public Works | | \$ | 250,750 | | |
| 61 | Green Cove at Country Club Rd. Fish Passage Design | Thurston County Public Works | | \$ | 297,500 | | |
| CURRENT FUNDING LINE | | | | | | | |
| 62 | Coleman Creek at SM 4.7 | Kittitas Co Conservation Dist | | x | \$ | - | |
| 63 | Scammon Creek at Graf Fish Passage Const - FBRB | Lewis County Public Works | | x | \$ | - | |
| 64 | Berwick Creek at Labree Fish Passage Const - FBRB | Lewis County Public Works | | x | \$ | - | |
| 65 | Forrester Barrier Culvert Removal | Kitsap Conservation District | | | \$ | - | |
| 66 | East Tarboo Creek Fish Passage | Northwest Watershed Institute | | | \$ | - | |
| 67 | Erick Creek Fish Passage Project | Cowlitz County of | | x | \$ | - | |
| 68 | Lynch Road MP 2.27-Lynch Creek Barrier Planning | Mason County of | | | \$ | - | |
| 69 | Percival Creek Fish Barrier Removal | Tumwater City of | | x | \$ | - | |
| 70 | Derby Creek BNSF Crossing | Chelan Co Natural Resource | | x | \$ | - | |
| 71 | Williams Creek #2 | Tulalip Tribes | | | \$ | - | |
| 72 | Barnabee Farms Springbrook Creek Restoration | Bainbridge Island Land Trust | | | \$ | - | |
| 73 | Seidel Creek Multiple Fish Barrier Correction Desi | Adopt A Stream Foundation | | | \$ | - | |
| 74 | Whiskey Creek Barriers, Ellensburg | Mid-Columbia RFEF | | | \$ | - | |
| 75 | NC 213 Norway Park Creek at Pavilion Dr | Skagit Fish Enhancement Group | | | \$ | - | |
| 76 | Ruby Creek Culvert at Sidney Rd Port Orchard | Port Orchard City of | | x | \$ | - | |
| 77 | Mill Creek Barrier Improvements NE 259th St-61 Av | Clark County Public Works | | | \$ | - | |
| 78 | South Fork Dogfish Creek Culvert Replacement | Poulsbo City of | | | \$ | - | |
| 79 | Upper Catherine Creek Barrier Correction Design | Adopt A Stream Foundation | | | \$ | - | |
| 80 | Clearwater Creek Bridge Design | Sea Resources | | | \$ | - | |
| 81 | Fletcher Bay Rd Fish Passage Restoration | Mid-Puget Sound Fish Enh Grp | | | \$ | - | |
| 82 | North Cr Culvert Replacement at Harborview Dr | Gig Harbor Public Works | | | \$ | - | |
| 83 | Crystal Creek | Trout Unlimited Inc. | | | \$ | - | |
| 84 | Schoolhouse at 108th | Pierce County of | | | \$ | - | |
| 85 | Cutler Barrier Removal | Cascadia Conservation District | | | \$ | - | |
| 86 | 20th Street Culvert Replacement Design | Fife City of | | | \$ | - | |
| 87 | Newberry Hill Culvert Replacement Site ID 998132 | Kitsap County Public Works | | x | \$ | - | |
| 88 | Mill Creek Trib. Shadow Valley Fish Passage | South Puget Sound SEG | | | \$ | - | |
| 89 | Derby Creek Barrier Correction | Cascade Col Fish Enhance Group | | | \$ | - | |
| 90 | Hammer and Guenther Fish Barrier Removal | Lewis Conservation District | | | \$ | - | |
| 91 | Panther Creek Barrier Removal - Talbot Road | Renton City of | | | \$ | - | |
| 92 | Ridgefield - Gee Creek Culvert Replacement | Ridgefield City of | | x | \$ | - | |
| 93 | Cooper Creek Culvert Restoration | Bainbridge Island City of | | | \$ | - | |

| | | | | |
|---|--------------------------------|---|----|------------|
| 94 Annapolis Creek Culvert Removal at Bay St | Port Orchard City of | | \$ | - |
| 95 Derby Creek Barrier Design | Cascade Col Fish Enhance Group | | \$ | - |
| 96 Gilliam Creek Fish Passage Prelim Dsgn | Tukwila City of | | \$ | - |
| 97 Little Chumstick Fish Barriers Design | Cascade Col Fish Enhance Group | | \$ | - |
| 98 Fauntleroy Creek Culvert Replacement at 45th | Seattle Public Utilities | | \$ | - |
| 99 Derby Canyon Orchards | Chelan Co Natural Resource | x | \$ | - |
| 100 Camas Creek Crossing Design Project | Chelan Co Natural Resource | | \$ | - |
| 101 kenmore 192 trib culvert | Kenmore City of | x | \$ | - |
| 102 SE 256th St Culvert Replacement CIP 1145 | Covington City of | | \$ | - |
| | Total | | \$ | 41,479,743 |