



Nelson Dam Barrier Correction: FBRB 2021-2023

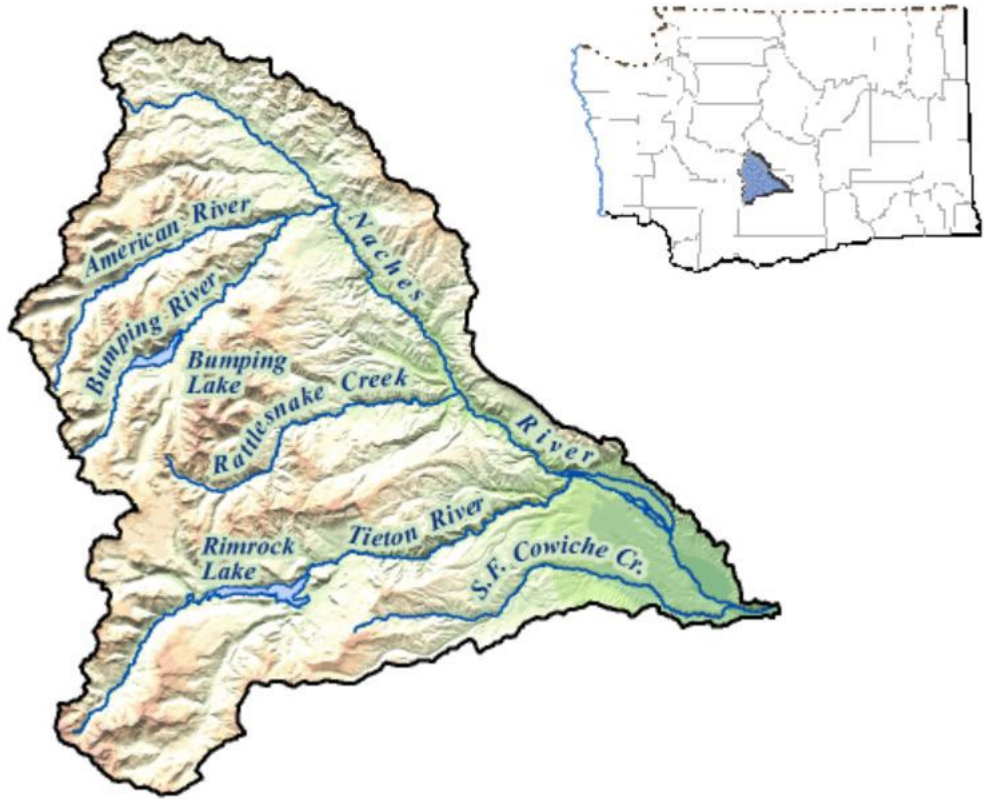


Before: 33% passable barrier, 180 ft. by 8ft., full span concrete dam.



After: Fully passable crest based roughened channel.
Photo Courtesy of Mike Shane, City of Yakima

Habitat Details

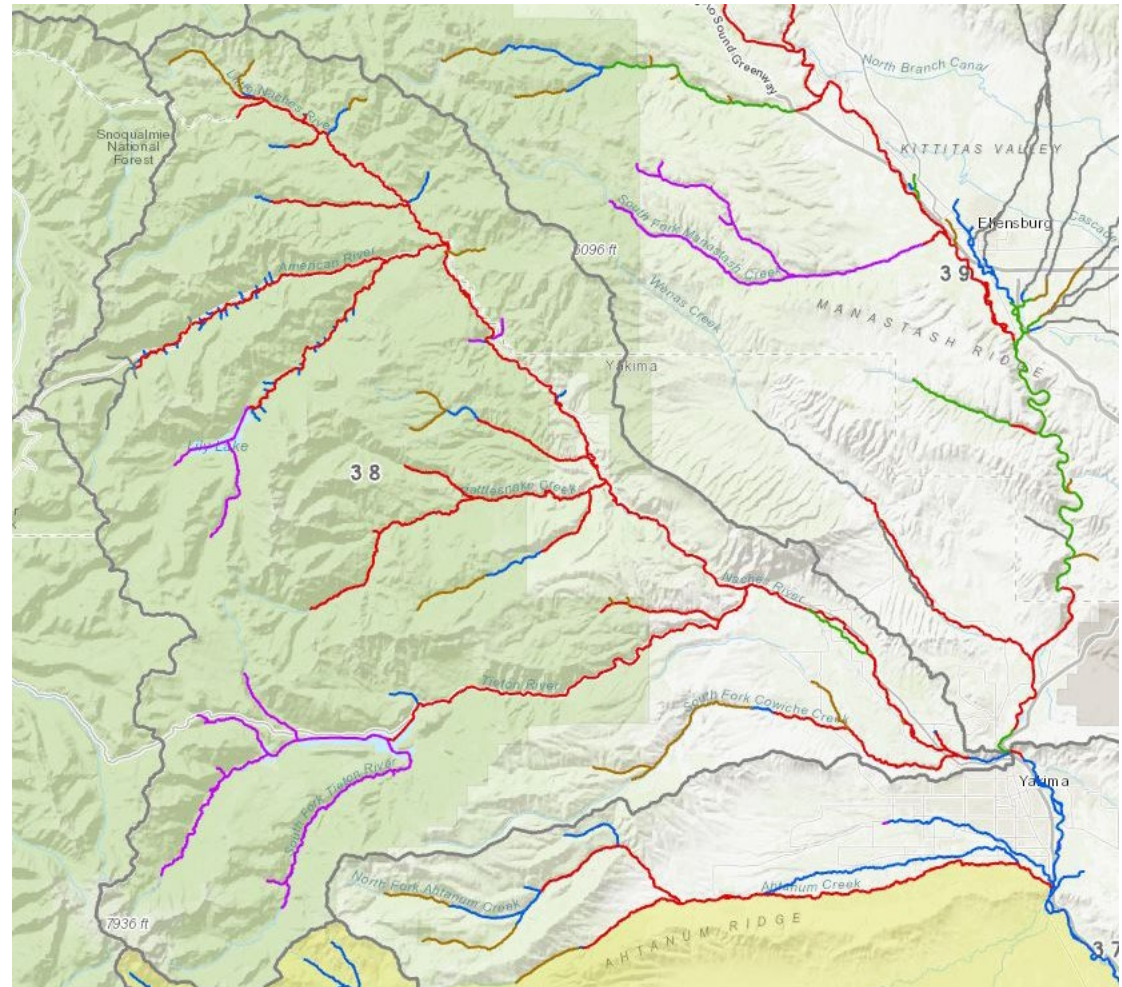


- WRIA 38...yes...this one barrier was a blockage for an entire WRIA
- Drainage area of ~1,100 square miles
- Elevation range of 1,000 ft to 8,100 ft
- Barrier to an estimated 223 miles of anadromous habitat
- Multiple large reaches (...river sized reaches...)of critically important spawning and rearing habitat for several anadromous species and distinct runs
- Upper watershed contains many of the most climate resilient coldwater inputs/habitats in the Yakima Basin

Fish Life Details

- 10 distinct natural populations of anadromous species including Chinook, Steelhead, and Bull Trout.
- Ongoing coho reintroduction efforts within the basin
- Dam was a seasonal based total barrier (i.e., often at its biggest drop/lowest flows when migratory fish most need to run)

| NATURAL POPULATIONS | |
|------------------------------------|--|
| Population Name | |
| American River Bull Trout | |
| Crow Creek Bull Trout | |
| Deep Creek Bull Trout | |
| Indian Creek Bull Trout | |
| North Fork Tieton River Bull Trout | |
| Rattlesnake Creek Bull Trout | |
| South Fork Tieton Bull Trout | |
| Naches Summer Steelhead | |
| American River Spring Chinook | |
| Naches Spring Chinook | |



Steelhead Distribution in the Naches (adapted from SWIFD)

Project Details

- Number 1 Ranked Project for BAFBRB for 21-23 Partnership between City of Yakima and Yakima County
 - Provides unimpeded fish passage for all species and life stages (after 150 years)
 - Improves water supply reliability
 - Improves sediment transport
 - Reduces flood risk up and downstream
- Critical element of a decades long, six-phase, flood risk reduction project
- Project enables the next phase for irrigation



Project Budget Summary

| | |
|---|---------------------|
| Brian Abbott Fish Barrier Removal Board | \$4,134,000 |
| City of Yakima | \$10,700,000 |
| Floodplains by Design via Yakima County (DOE) | \$4,476,000 |
| WA Community Capital Facilities | \$1,298,500 |
| Bureau of Reclamation | \$490,000 |
| Resources Legacy Fund | \$500,000 |
| Total | \$21,598,500 |



Photos Courtesy of Mike Shane, City of Yakima

Courtesy of Mike Shane, City of Yakima

PHASE I

NELSON DAM REMOVAL PROJECT

NACHES RIVER, WA - 6/2/2023



0:03 / 4:07



03/26/2020



Photo Courtesy of Mike Shane, City of Yakima

04/19/2023

Project Finished

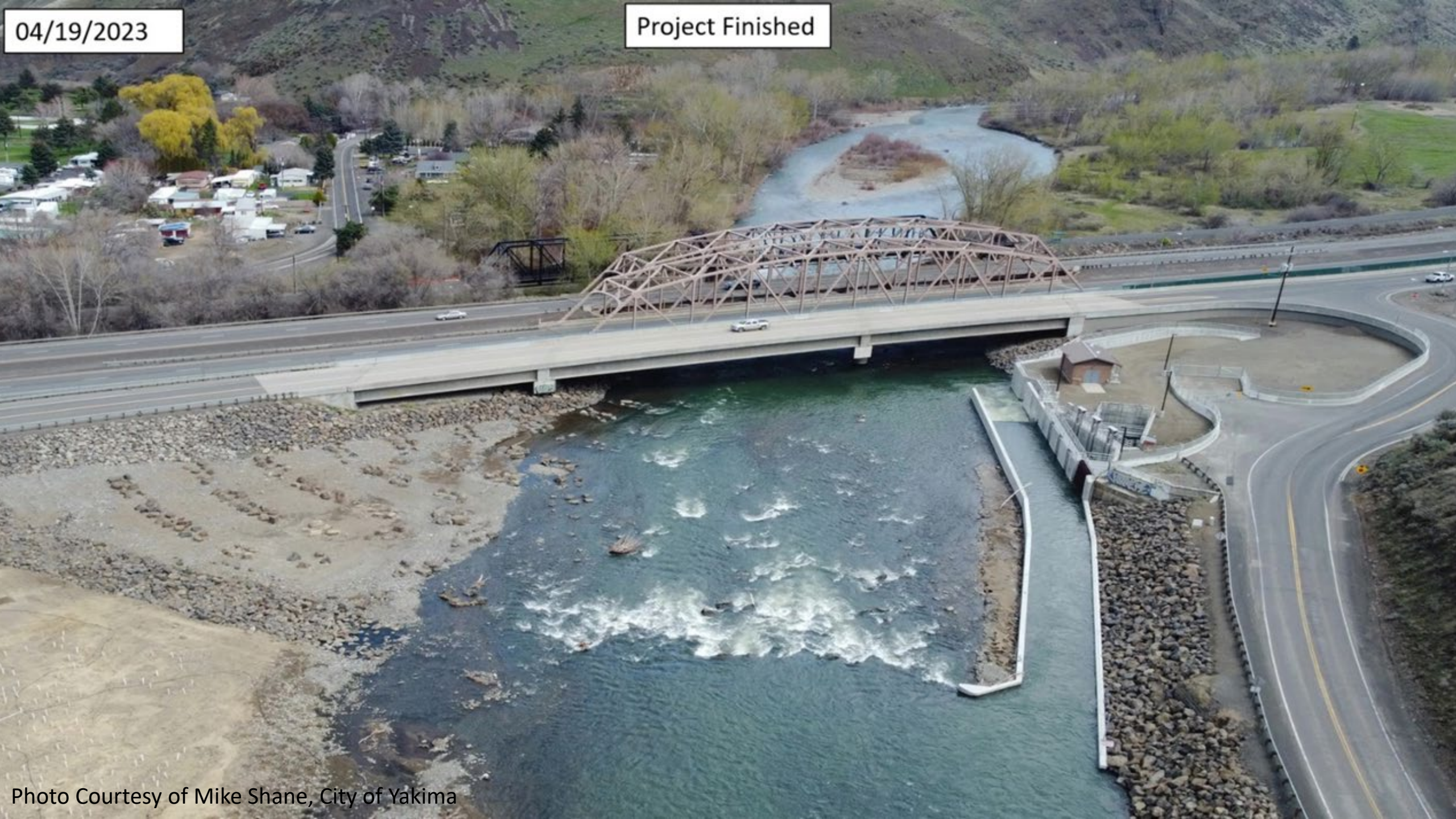


Photo Courtesy of Mike Shane, City of Yakima