



Washington Department of
FISH and WILDLIFE

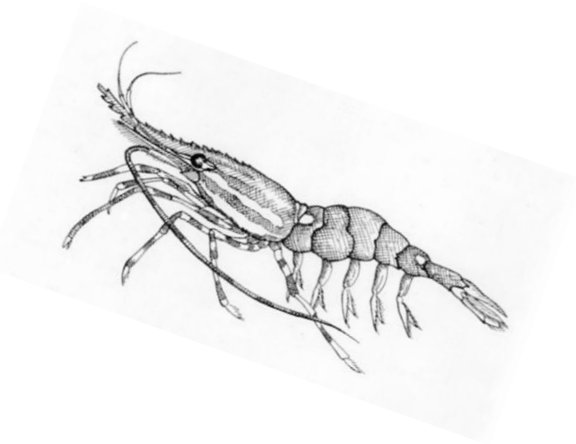
Recreational Crab & Shrimp Advisory Committee Meeting

June 1, 2022

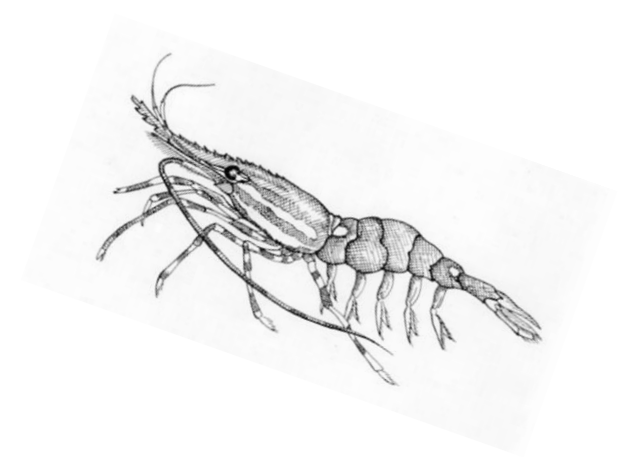
1:00 pm – 3:00 pm

Meeting Outline

- **2022 Shrimp Season Updates (20 min)**
- **2022 Management Plan Updates (20 min)**
- **Crab Test Fishing Summaries (10 min)**
- **2022 Crab Topics (30 min)**
- **Misc. Updates (30 min)**



2022 Shrimp Season Update - *Preliminary*



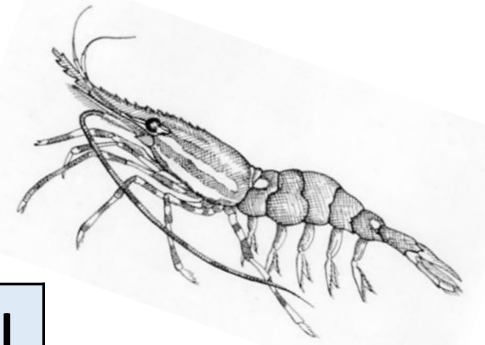
Stats:

- **1,866** interviews from **64** different creels
- **25** different ramps sampled
 - 2 days in Hood Canal
 - 4 days in MA 6/7
 - 1 day in MAs 8, 9, 10, 11, & Discovery Bay

Ramp Sampled	Number of Interviews
bellingham_ramp	84
camano_island_state_park_ramp	32
cape_george_marina	12
cornet_bay_state_park_ramp	373
cushman	113
don_armeni_ramp	54
ediz_hook_ramp	2
edmonds_marina	34
everett_ramp	177
gardiner_ramp	20
john_wayne_marina_ramp	186
kingston_ramp	11
misery_point	140
pleasant_harbor_marina	89
point_defiance_ramp	61
point_whitney_ramp	50
port_angeles_boat_haven_ramp	2
port_of_friday_harbor_marina	65
port_townsend_boat_haven_ramp	5
redondo_ramp	23
salsbury_point_county_park_ramp	55
shilshole_ramp	55
triton_cove_sp_boat_ramp	98
twanoh_state_park_ramp	45
washington_park_ramp	80

2022 Shrimp Season Update

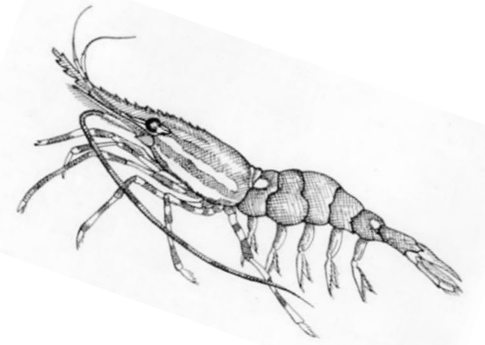
Boat Counts



Quota Area	5/25/2022	5/27/2022	5/28/2022	Grand Total
6 - 23AC.23B	37		15	52
6 - 25A outside Disco	48	79	78	205
6 - Discovery Bay District	78			78
7 East (1B)	67		31	98
7 South - 23AE	135		134	269
7 South - 23AW	5		4	9
7 West (1A)	156		169	325
8 - 2 East	596			596
9 - 2 West	305			305
10 - Elliot Bay	0			0
10 - outside Elliot Bay	387			387
11 - 26D	268			268
12 - Hood Canal	1,183		1,200	2,383
Grand Total	3,265	79	1,631	4,975

2022 Shrimp Season Update

Boat Counts 2022 vs 2021

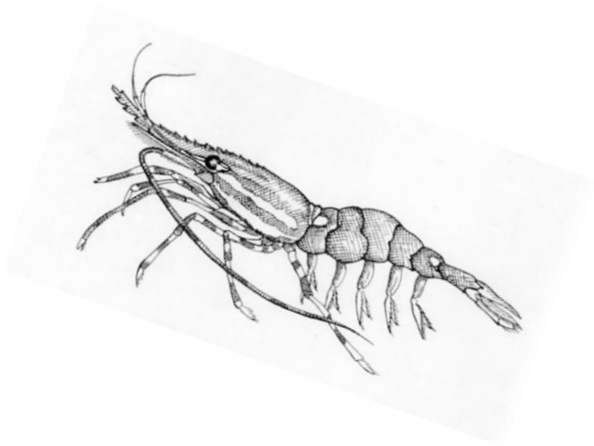


Marine Area	5/19/2021 Shrimping Boat Count	5/25/2022 Shrimping Boat Count	Effort 2022 vs 2021 First Day
6 inside Discovery Bay	112	78	Lower
8-1 & 8-2	673	596	Lower
9	316	305	Lower
10 outside Elliott	371	387	Higher
11	256	268	Higher
12	1,256	1,183	Lower

2022 Shrimp Season Update

- Just announced additional dates in MA 9 & 11 (*June 9*)

What did you observe this shrimp season?



2022 Management Plan Update

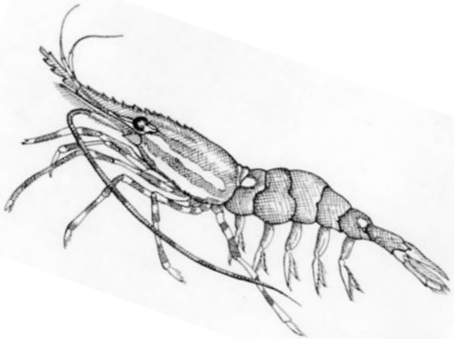


Shrimp

- Plans in all areas except MAs 9 and 8-1/8-2

Crab

- Working through plans currently
- Signed – MA 11 and MA 13
- New fisheries-dependent quota structure in MA 11 (Region 6)



Test Fishing Summaries / Crab



- a) MA 8-1/8-2 (Region 2E) Tribal Data
- b) MA 10 (Region 4) Tribal Data
- c) MA 11 (Region 6) Tribal Data
- d) MA 13 (Region 7) WDFW Data
- e) MA 9 (Region 2W) WDFW Data upcoming
- f) MA 12 (Region 5) (Hood Canal) WDFW data upcoming

Test Fishing Summaries / Crab

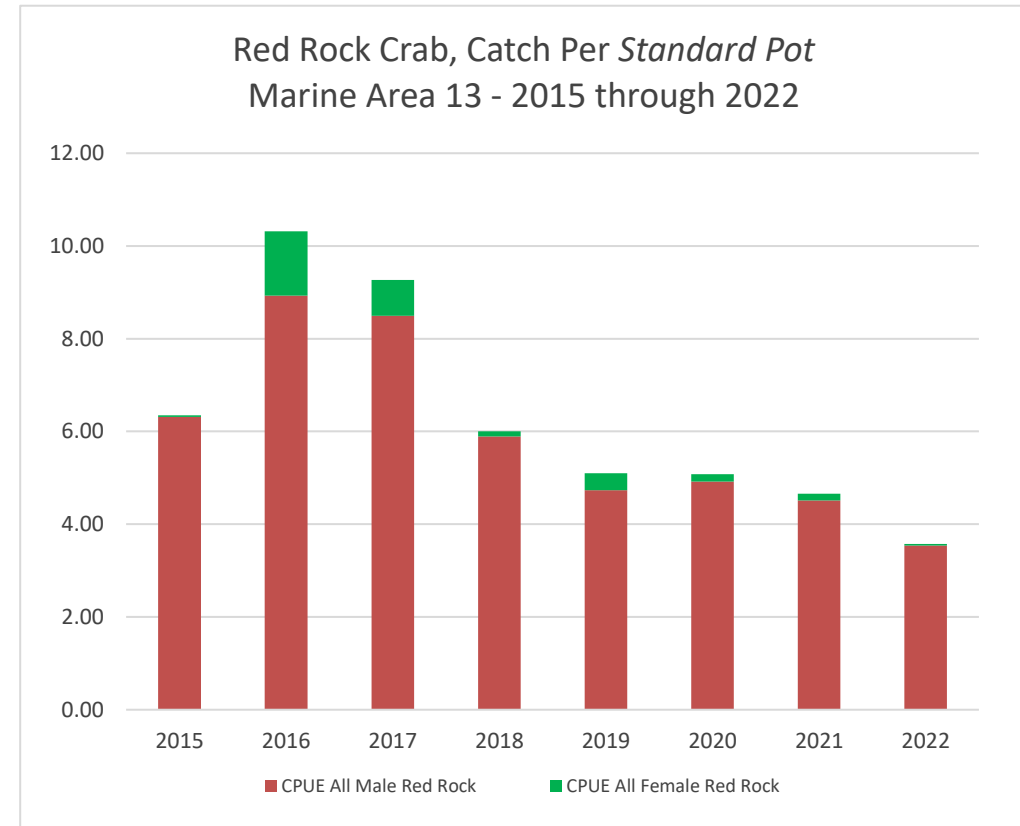
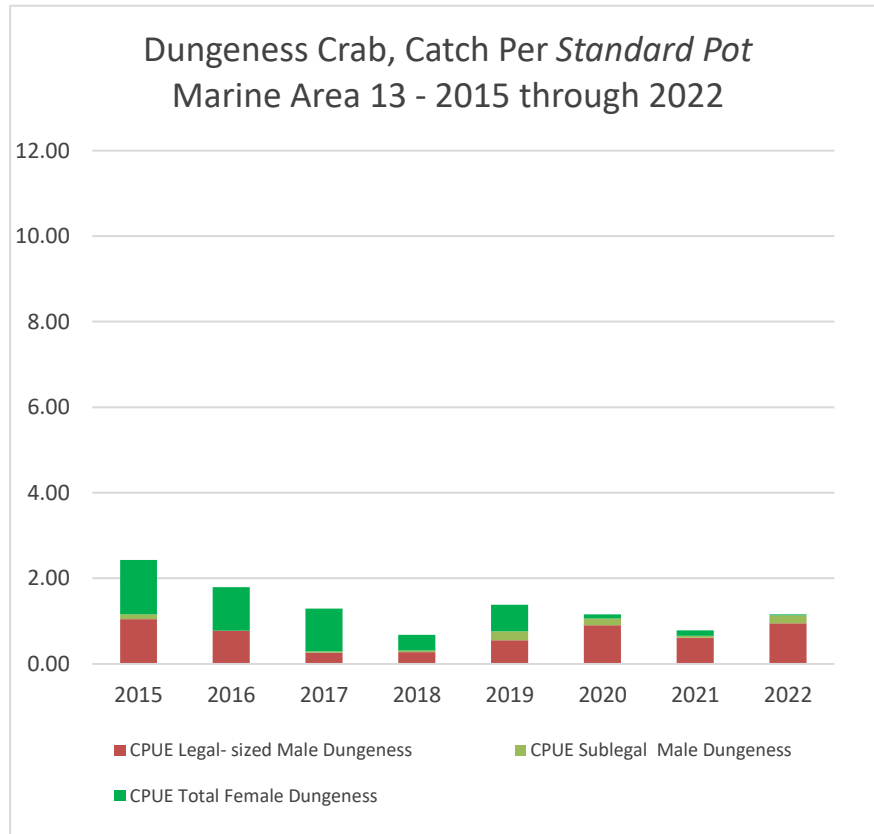
Dungeness crab, Legal Size Males (LSM) per pot from test fisheries



Year	Marine Area	2021	2022
Swinomish Test	8-1	11.4	10.4
Upper Skagit Test	8-1	8.6	7.1
Tulalip Port Susan Test	8-2	11.3	8.6
Tulalip Everett Test	8-2	13.1	14.6
Suquamish Test	10	7.8	7.1
Puyallup Test	11	NA	5.6
WDFW Test	13	0.6	1.0

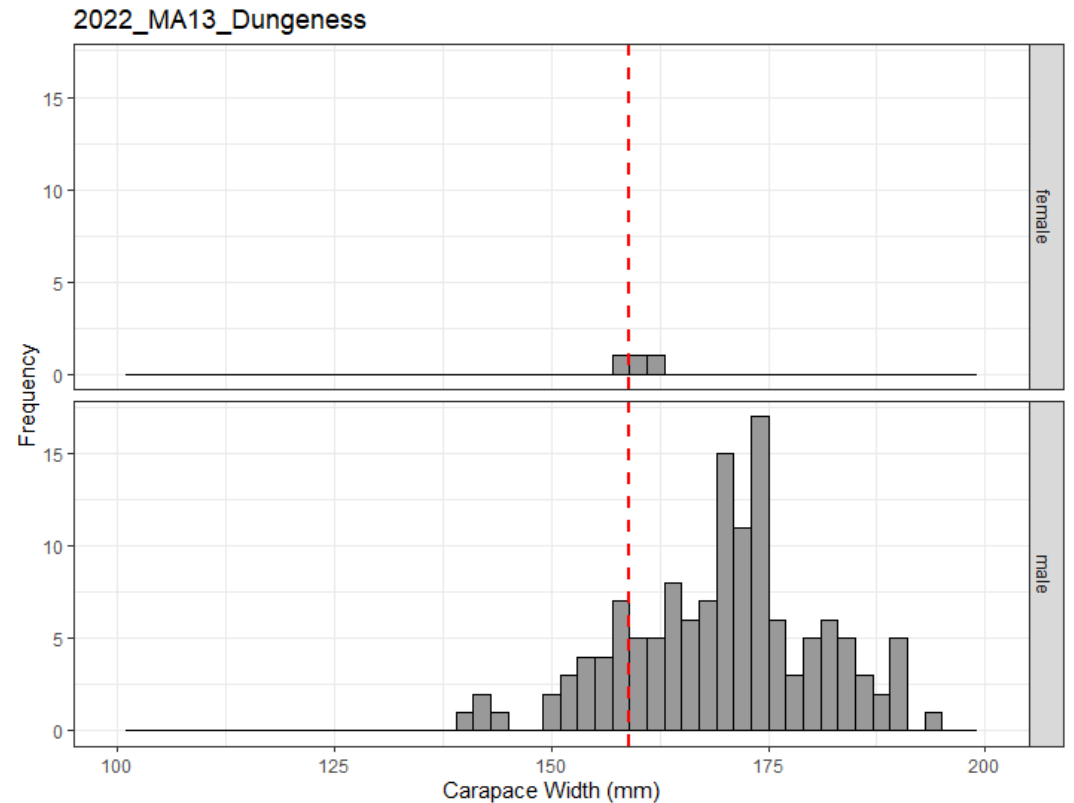
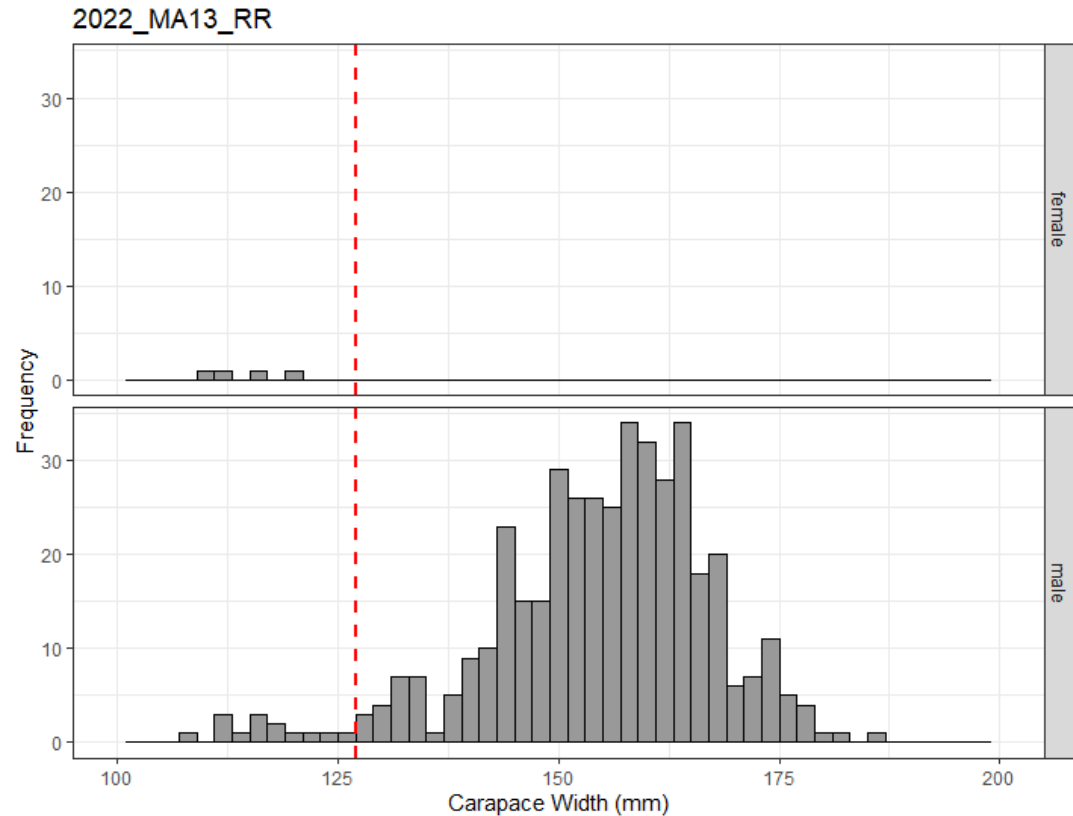
Test Fishing Summaries / Crab

- Marine Area 13



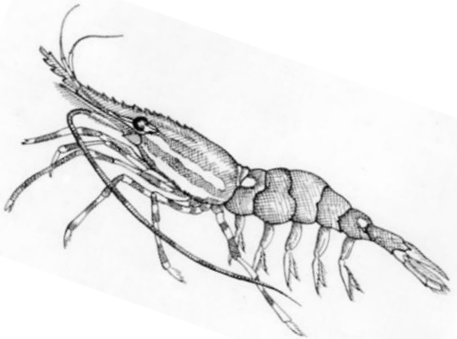
Test Fishing Summaries / Crab

- Requests for Red Rock only fishery MA 13*



2022 Crab Topics

- a) 2021 Catch Totals
- b) Recreational Reporting Rates
- c) Season Structure
 - i) MA 10/11
 - ii) MA 7N
- d) Red Rock Crab Management



2021 State Crab Harvest Totals - *Final*

Management Region	Marine Area	Regional State Share	State Summer Recreational Catch	State Summer EUC	State Winter Recreational Catch	State Winter EUC	State Commercial Harvest	State Commercial EUC	Total State Harvest To-Date	State Balance To-Date
1	7	2,425,000	454,146	45,278	55,321	5,516	1,867,795	18,678	2,446,734	-21,734
2E	8-1,8-2	1,000,000	624,317	62,244	41,043	4,092	243,154	2,432	977,282	22,718
2W	9	225,000	75,675	7,545	11,591	1,156	119,903	1,199	217,068	7,932
3-1	6, N	44,581	2,282	228	379	38	41,822	418	45,167	-586
3-2	6, SE	369,000	137,513	13,710	22,838	2,277	191,754	1,918	370,009	-1,009
3-3	6, W	15,500	2,853	284	474	47	4,931	49	8,639	6,861
3-4	4, 5	9,500	5,677	566	363	36	2,564	26	9,232	268
4	10	55,000	29,744	2,965	5,703	569	0	0	38,981	16,019
5	12	208,000	75,830	7,560	17,724	1,767	0	0	102,881	105,119
6	11	22,500	17,856	1,780	49	5	0	0	19,690	2,810
7	13	0	369	37	0	0	0	0	406	-406
TOTALS		4,374,081	1,426,262	142,197	155,485	15,503	2,471,923	24,719	4,236,089	

*RED indicates areas without a signed plan and agreed-to quota

2021 Recreational Crab - CRC Reporting Rates Summer

Summer	CRCs Issued	CRCs Reported Mail	CRCs Reported Online	CRCs Reported	CRCs Unreported	Endorsements Entire Year
2007	210,327	34,400 (16%)	32,373 (15%)	66,773 (32%)	143,554 (58%)	226,063
2008	210,893	26,037 (12%)	43,919 (21%)	69,956 (33%)	140,937 (67%)	215,643
2009	236,665	37,128 (16%)	72,172 (30%)	107,300 (45%)	129,365 (55%)	241,226
2010	208,462	29,406 (14%)	77,472 (37%)	107,418 (52%)	101,044 (48%)	213,013
2011	230,355	31,222 (14%)	89,095 (39%)	120,317 (52%)	110,038 (48%)	237,129
2012	200,711	26,504 (13%)	79,895 (40%)	106,399 (53%)	94,312 (47%)	209,957
2013	214,692	26,236 (12%)	90,379 (42%)	116,615 (54%)	98,077 (46%)	222,050
2014	213,741	25,296 (12%)	91,270 (43%)	116,566 (55%)	97,175 (45%)	223,184
2015	232,621	25,685 (11%)	94,336 (41%)	120,021 (52%)	112,600 (48%)	243,934
2016	216,977	23,734 (11%)	90,262 (42%)	113,996 (53%)	102,981 (47%)	223,443
2017	215,929	33,252 (15%)	72,601 (34%)	105,853 (49%)	110,076 (51%)	222,222
2018	200,962	31,316 (16%)	72,790 (36%)	104,106 (52%)	96,856 (48%)	207,557
2019	192,798	29,006 (15%)	69,087 (36%)	97,571 (51%)	95,227 (49%)	200,113
2020	213,831	23,716 (11%)	53,029 (25%)	76,745 (36%)	137,086 (64%)	222,181
2021	225,282	27,534 (12%)	75,254 (33%)	102,788 (46%)	122,494 (54%)	233,108

2021 Recreational Crab - CRC Reporting Rates Winter

Winter	CRCs Issued	CRCs Reported Mail	CRCs Reported Online	CRCs Reported	CRCs Unreported	Endorsements Entire Year
2007	157,905	10,281 (7%)	6,388 (4%)	16,669 (11%)	141,236 (89%)	226,063
2008	207,143	10,993 (5%)	10,871 (5%)	21,864 (11%)	185,279 (89%)	215,643
2009	89,259	11,909 (13%)	27,382 (31%)	39,291 (44%)	49,968 (56%)	241,226
2010	70,763	9,633 (14%)	27,346 (39%)	36,979 (52%)	33,784 (48%)	213,013
2011	28,514	4,675 (16%)	13,899 (49%)	18,574 (65%)	9,940 (35%)	237,129
2012	27,711	4,508 (16%)	13,357 (48%)	17,865 (65%)	9,846 (35%)	209,957
2013	29,638	4,419 (15%)	15,223 (51%)	19,642 (66%)	9,996 (34%)	222,050
2014	35,371	5,040 (14%)	17,401 (49%)	22,441 (63%)	12,930 (37%)	223,184
2015	36,398	5,039 (14%)	18,284 (50%)	23,323 (64%)	13,075 (36%)	243,934
2016	26,591	5,777 (22%)	10,577 (40%)	16,534 (62%)	10,057 (38%)	223,443
2017	23,277	4,431 (19%)	9,746 (42%)	14,177 (61%)	9,100 (39%)	222,222
2018	24,620	3,906 (16%)	9,896 (40%)	13,802 (56%)	10,818 (44%)	207,557
2019	23,578	4,178 (18%)	8,520(36%)	12,698 (54%)	10,880 (46%)	200,113
2020	36,459	5,015 (14%)	13,178 (36%)	18,193 (50%)	18,266 (50%)	222,181
2021	26,843	3,894 (15%)	9,591 (36%)	13,485 (51%)	13,358 (49%)	233,108

2022 Crab Season Structure

- MA 10/11
 - a) Reduced season to stay within share
 - b) 18 days for each in summer 2021
 - c) Expand MA 10 to get closer to share?
- MA 7N
 - i) Emailed advisors – looking to expand opportunity to make up for lost days in August due to softshell

Red Rock Crab Management

- Discussions with advisory group focused on MA 13
 - Red rock fisheries starting to be discussed in other areas

Similarities with recreational non-spot shrimp fishery challenges

- No CRC required
- Insufficient resources to adequately creel
- Electronic CRCs is a needed tool

Misc. Crustacean Fishery Updates

a) Budget and Staffing update

i) E-CRCs

ii) New Staff

- Recreational focused Biologist 2 – in HR for review
- Scientific Technician 3 – manage creel team
- 7 scientific technician 2s - focused on summer crab creeling

b) Crabber education and outreach (crabber quiz)

c) Green Crab

d) Other advisor comments, feedback & ideas

Adjourn Thank you!

