

Wolf Conservation & Management

WAG

May 21 2015

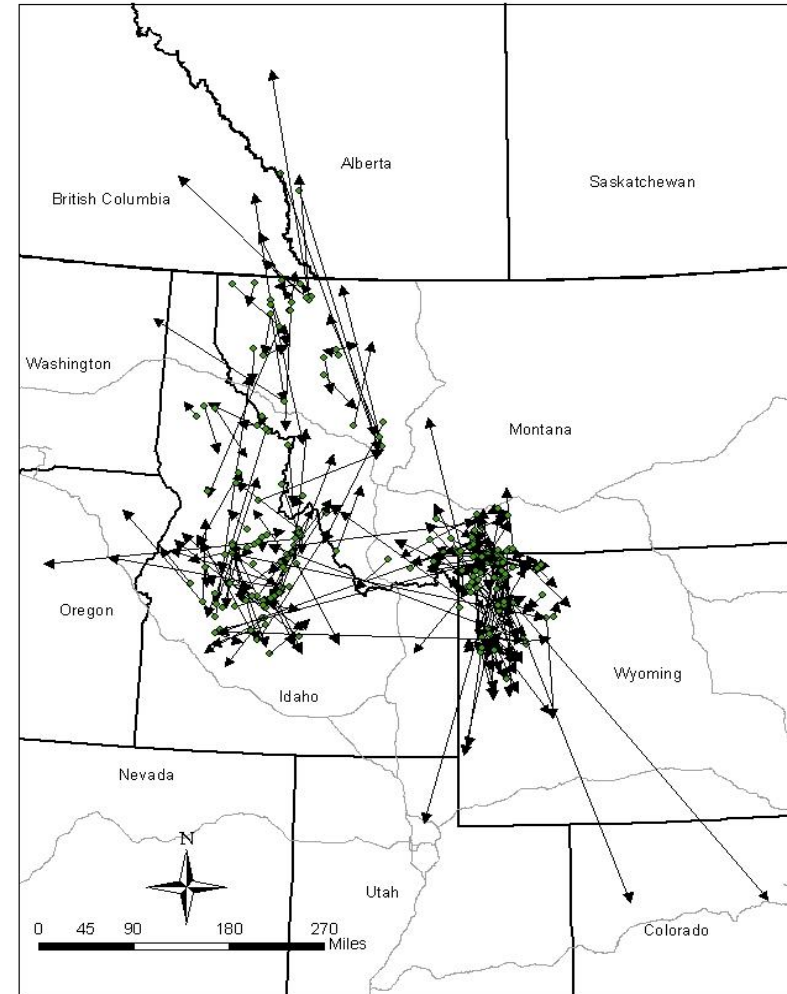
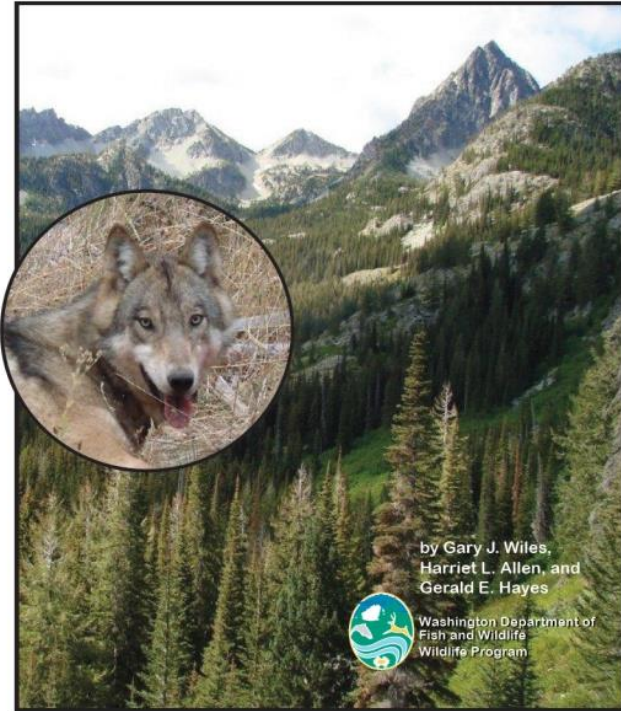


Donny Martorello | Carnivore Manager
Stephanie Simek | Conflict Manager

Wolf Conservation and Management Plan

STATE OF WASHINGTON

December 2011



287 dispersals of radio collared wolves in the NRM from 1993-2008.

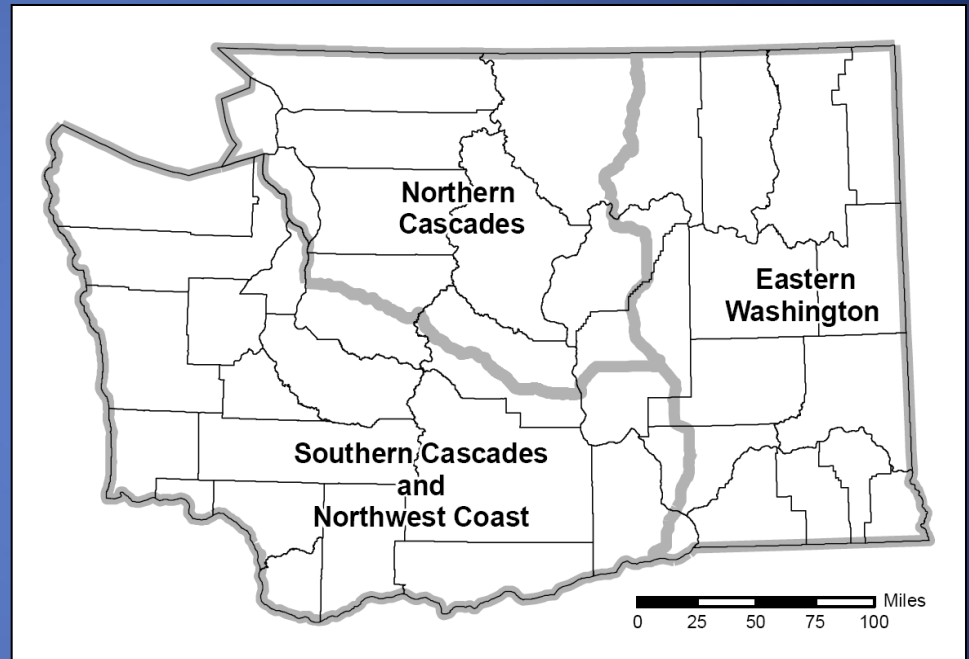
Wolf Plan Goals

- Restore self-sustaining wolf population
- Manage wolf-livestock conflicts
- Maintain healthy prey base
- Develop public understanding and promote coexistence

Diamond Pack, 2014

Recovery Objectives

- Delist at 15 successful breeding pairs for 3 consecutive years
- Or 18 successful breeding pairs for 1 year
- Distributed among 3 recovery regions



Definitions



- **Pack:** 2 or more wolves traveling together
- **Successful Breeding Pair:** male and female raising 2 or more pups until Dec 31

Legal Status

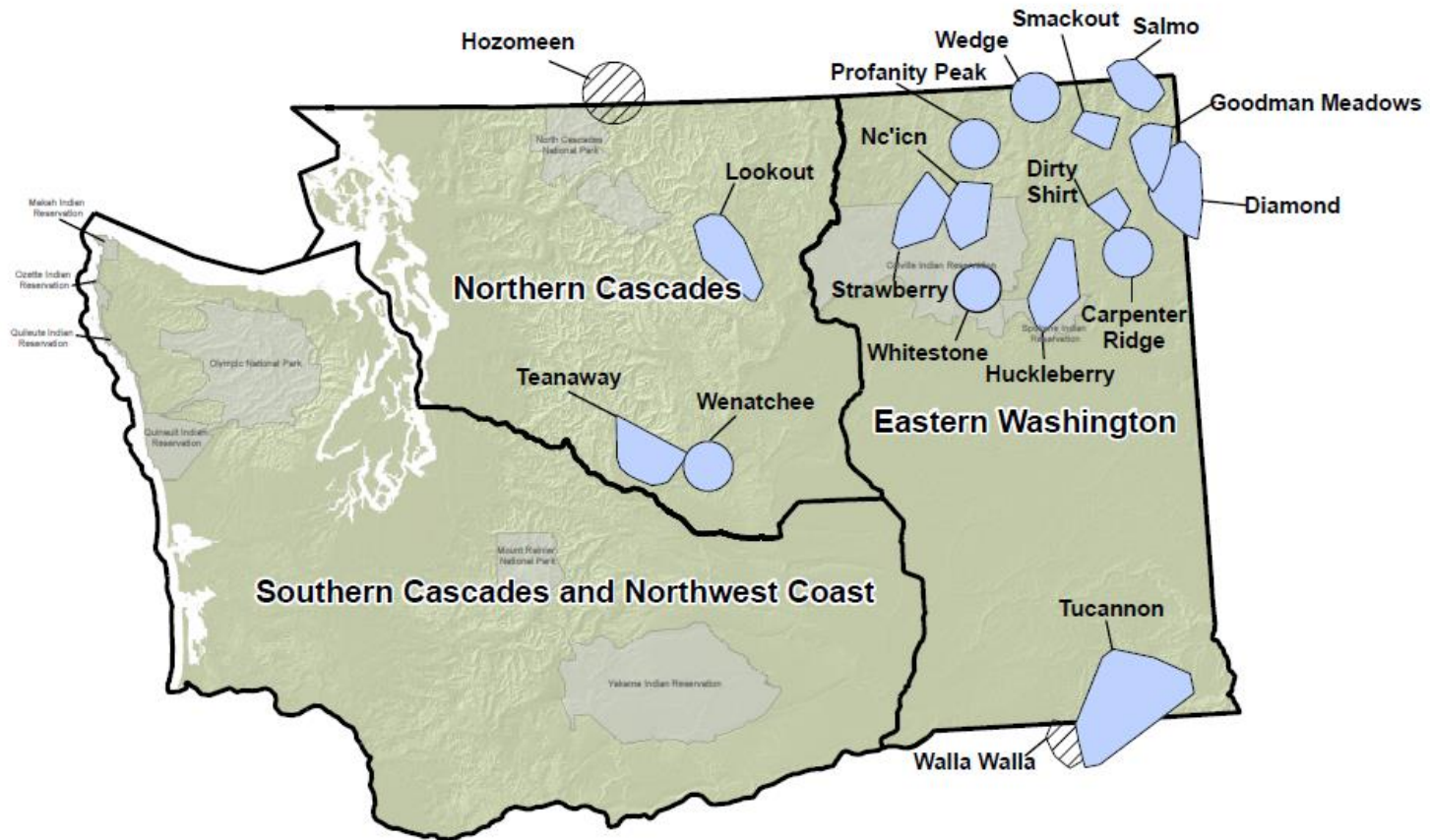


Federal listing status of gray wolves

- Entire state is State-listed as Endangered

- Federally delisted in Eastern 1/3 WA in 2011
- Federally listed as Endangered in Western 2/3 WA

Wolf Packs as of December 2014



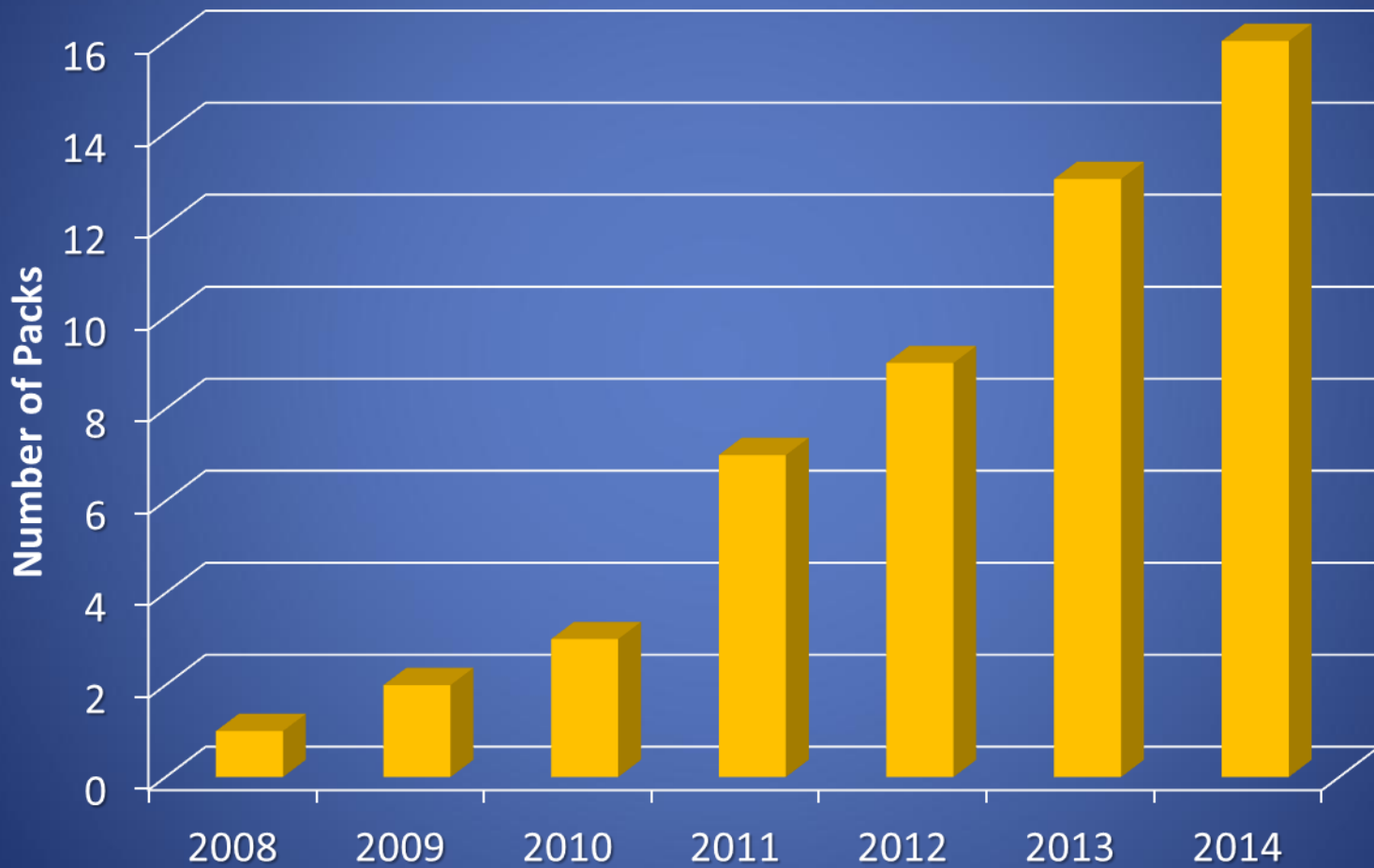
Legend

- Confirmed pack*
- Border pack that dens outside Washington
- Wolf Recovery Region

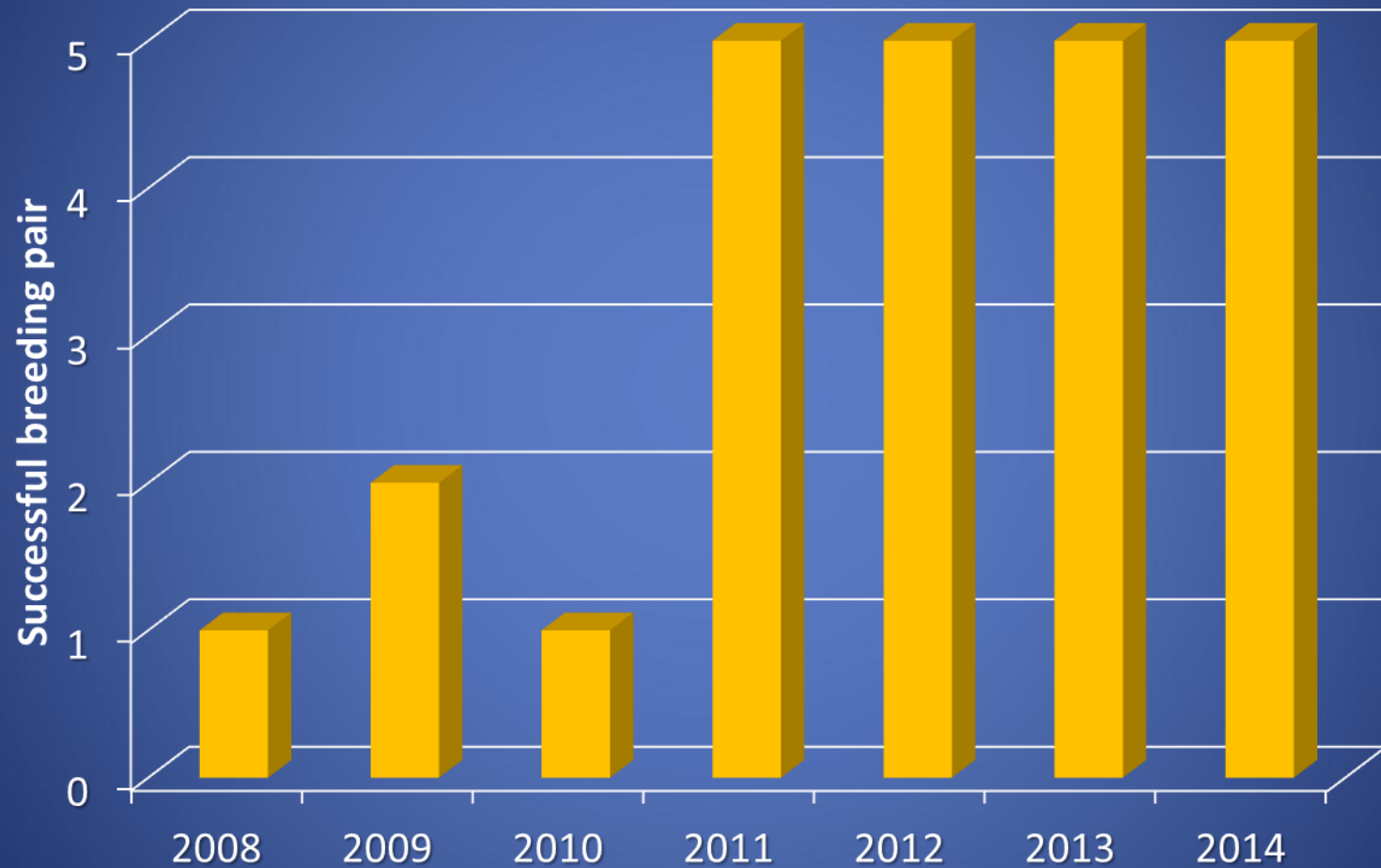
* Packs represented by polygons are packs that had collared wolves and the polygon is the estimated pack range. Packs represented by circles are packs that did not have collared wolves and the circle is a generic representation of the pack location.

** Packs may be removed from map due to natural breakup of the pack, lethal control, or no longer detected.

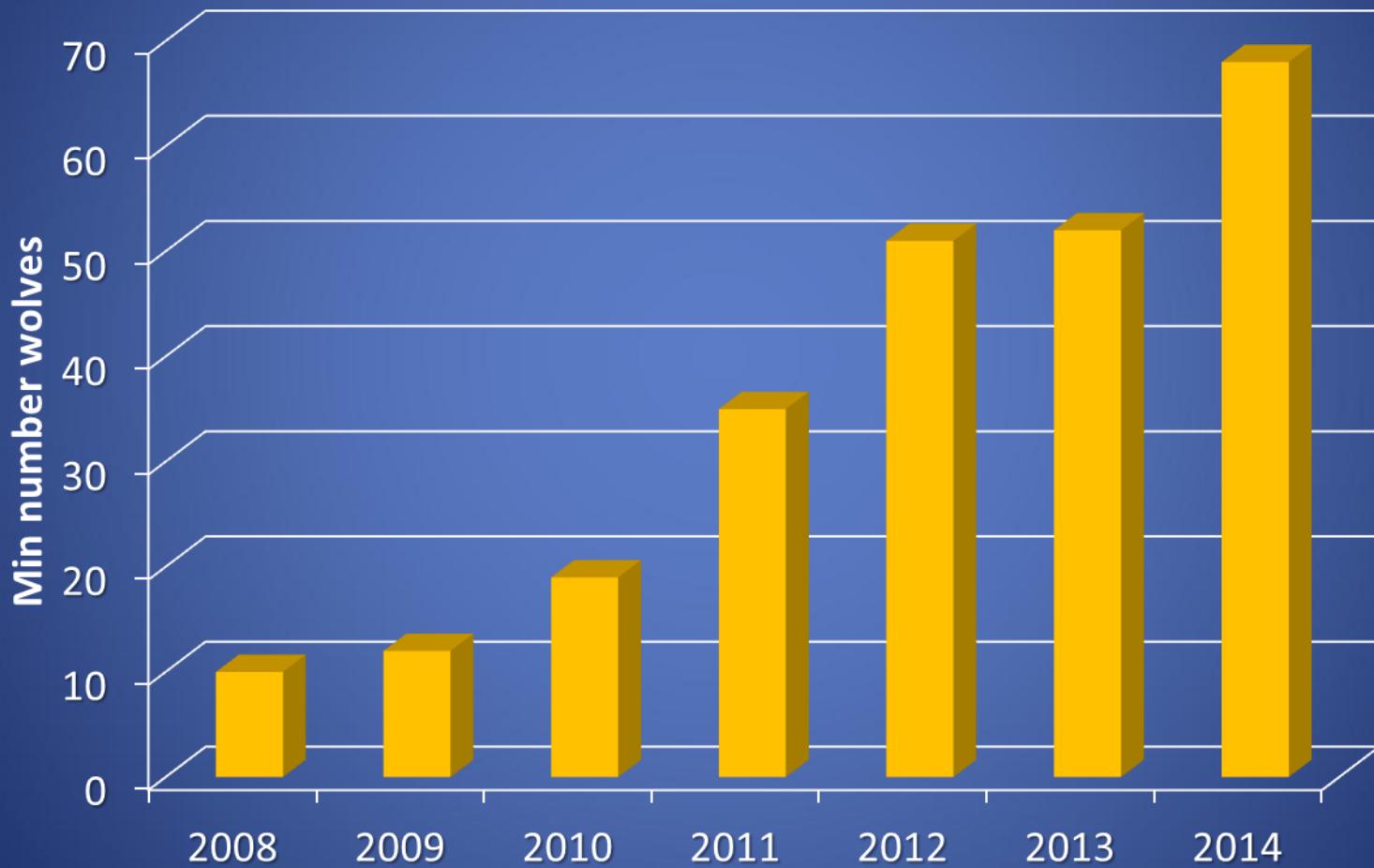
Trend in Number of Wolf Packs



Trend in Successful Breeding Pairs

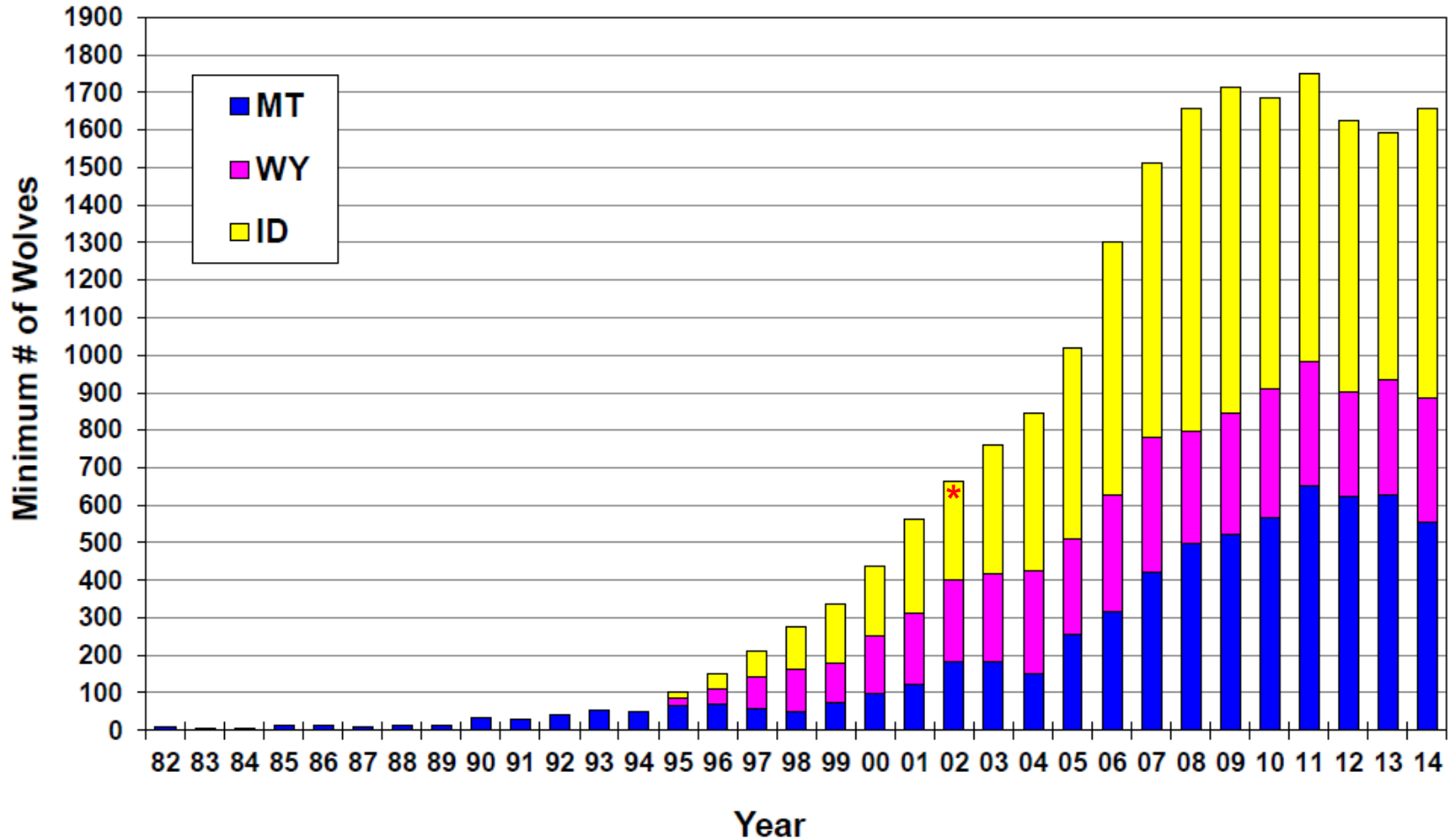


Trend in Minimum Number of Wolves



Wolf Population Growth In NRM DPS

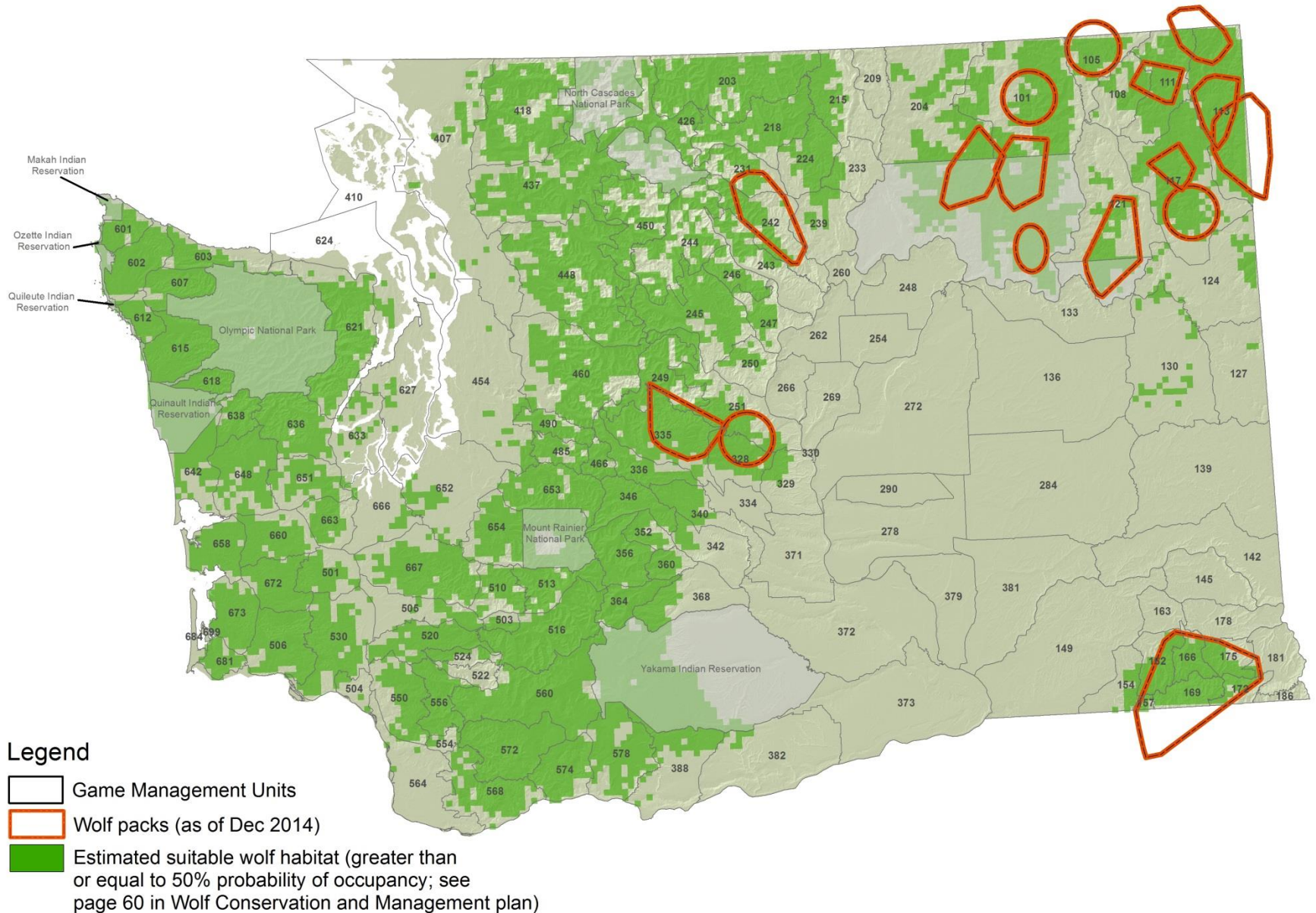
Figure 7a. Northern Rocky Mountain Wolf Population Trends in Montana, Idaho and Wyoming: 1982-2014
(excludes Oregon and Washington)



Washington Wolf Population Summary

Year	Min Number	Known Packs	SBP	Growth Rate	Known Wolf Mortality
2008	10	1	1	--	0
2009	12	2	2	20%	0
2010	19	3	1	58%	2
2011	35	7	5	84%	0
2012	51	9	5	46%	9
2013	52	13	5	2%	5
2014	68	16	5	31%	10
Ave				38%	

Washington Wolf Packs Relative to Estimated Suitable Wolf Habitat



Wolf-Livestock Conflict

Wolf Management

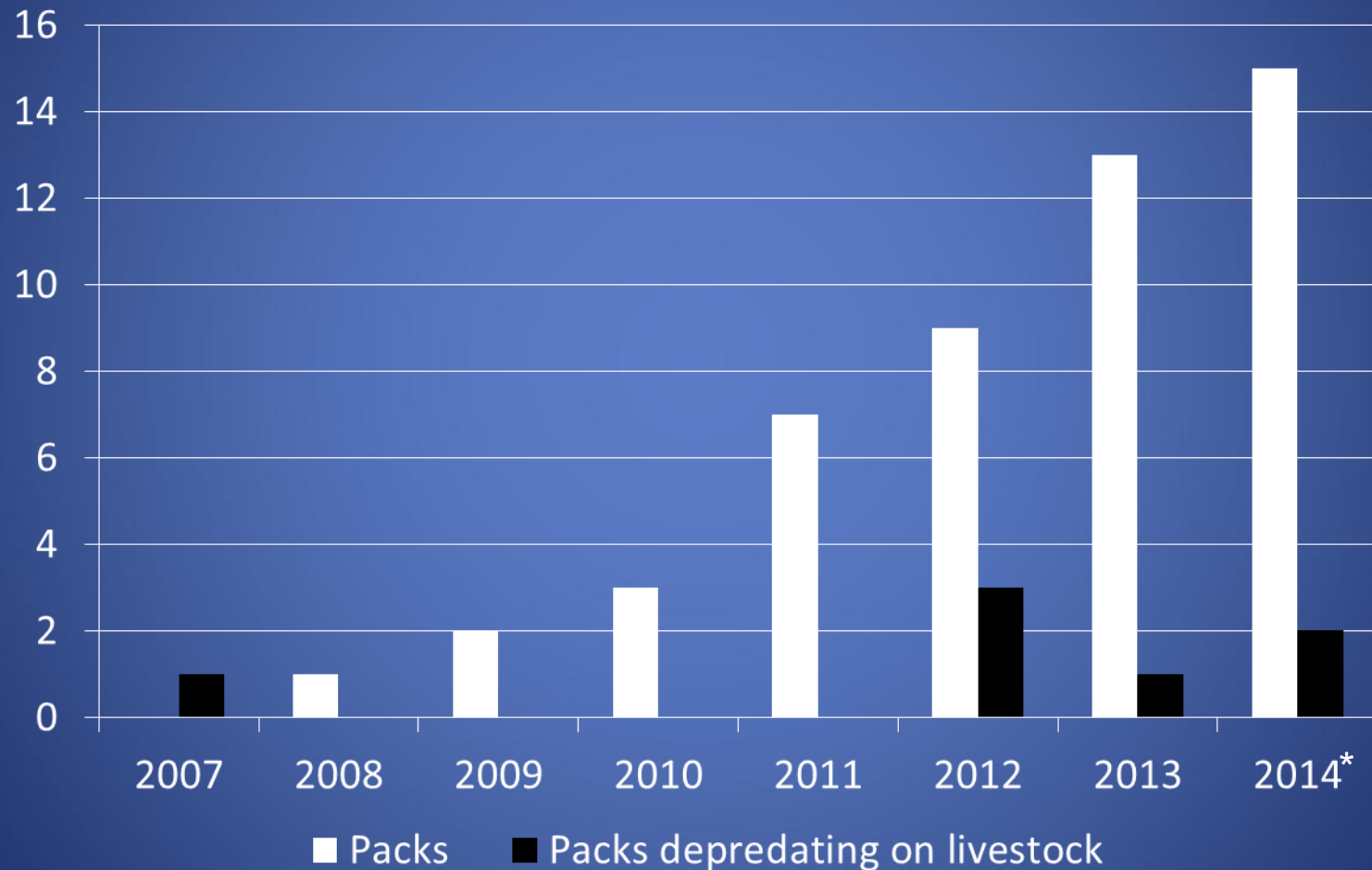
Washington

Year	Packs	Depredating Packs	Percent
2011	7	0	0%
2012	9	3	33%
2013	13	1	8%
2014	16	2	13%
Total	45	6	13%

Montana

Year	Packs	Depredating Packs	Percent
1999	11	4	36%
2000	15	6	40%
2001	19	4	21%
Total	45	14	31%

Packs Depredating on Livestock

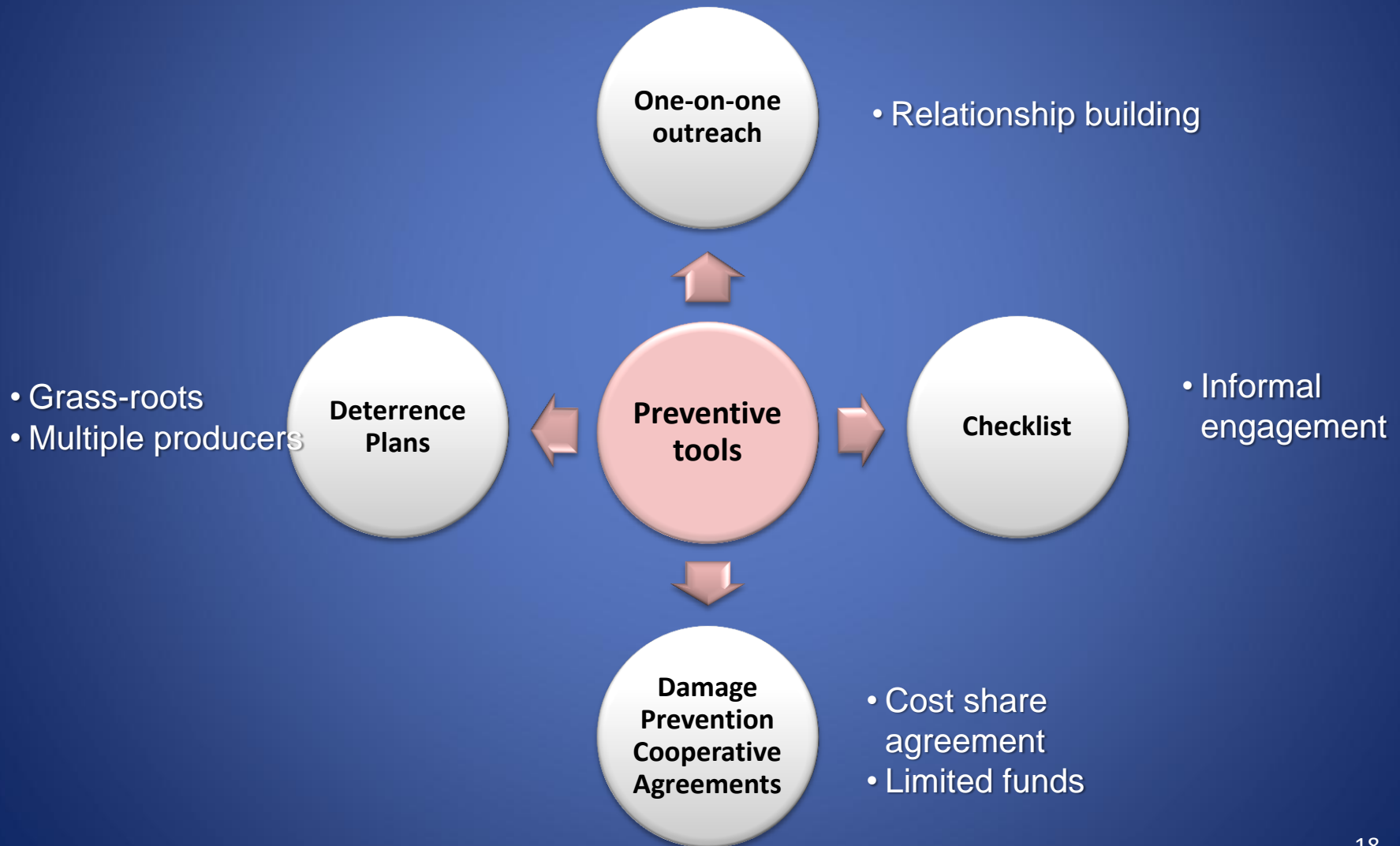


* Preliminary estimate based on information on Sept 20, 2014

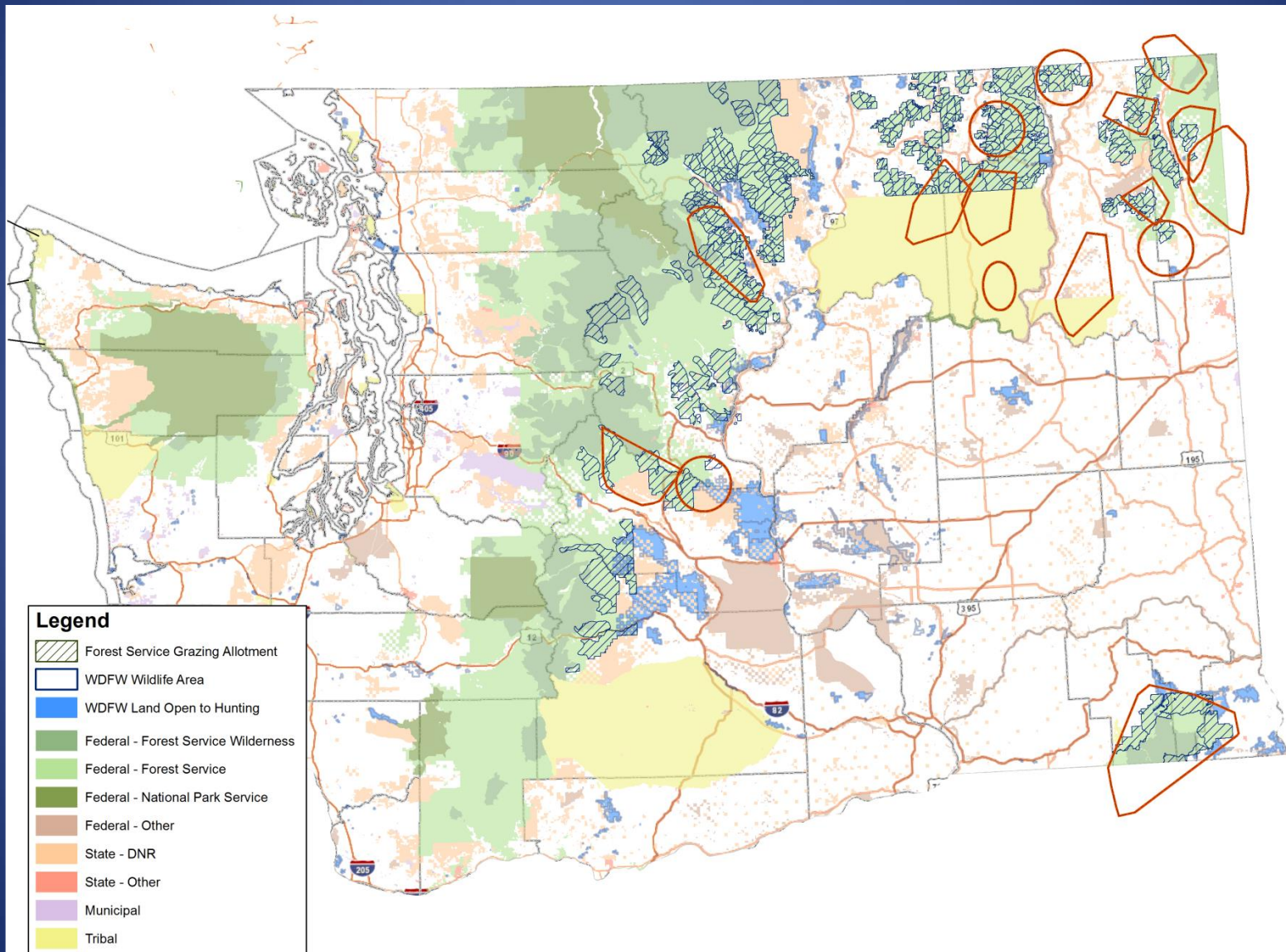
Washington Wolf Population Summary

Year	Min Number	Known Packs	SBP	Growth Rate	Known Wolf Mortality	Depredating Packs (% of known packs)
2008	10	1	1	--	0	0%
2009	12	2	2	20%	0	0%
2010	19	3	1	58%	2	0%
2011	35	7	5	84%	0	0%
2012	51	9	5	46%	9	33%
2013	52	13	5	2%	5	8%
2014	68	16	5	31%	10	13%
Ave				38%		12%

Four Methods of Incorporating Preventive Tools



Evaluating Risk and Prevention



Conflict Prevention Planning

- Depredations could happen in any pack
- Six packs have pack size of 3 or less
 - ✓ Salmo, Diamond, Tucannon, Wedge, Strawberry, Wenatchee
- Emphasizing preventive resources in seven packs
 - ✓ Particularly concerned about Profanity, Huckleberry, Smackout, and Teanaway

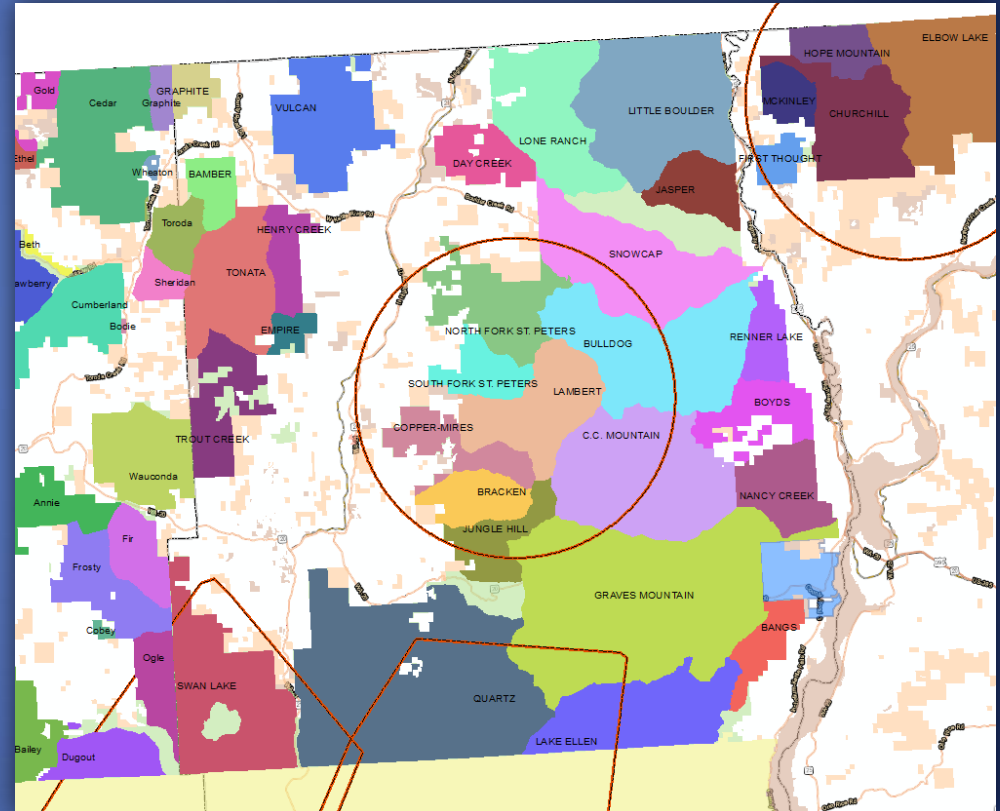


Profanity Pack

- Pack size: 6+
- Overlap with livestock: High
- Number of livestock: 1,000+
- History of depredations: Yes
- Collars: 0

2015 Plan

- Collar wolves
- Data sharing
- Range rider

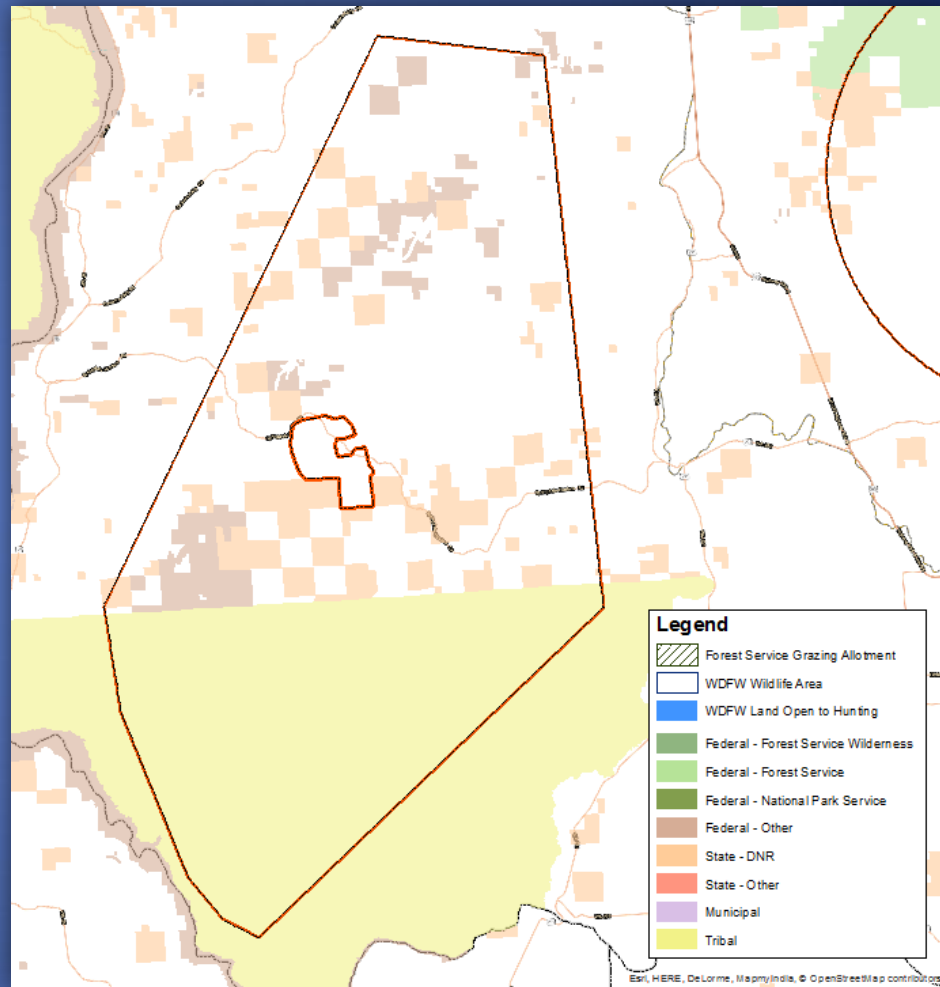


Huckleberry Pack

- Pack size: 6+
- Overlap with livestock: Unk
- Number of livestock: Unk
- History of depredations: Yes
- Collars: 1

2015 Plan

- Collar additional wolf
- Data sharing
- Damage prevention agreement
- Range riders

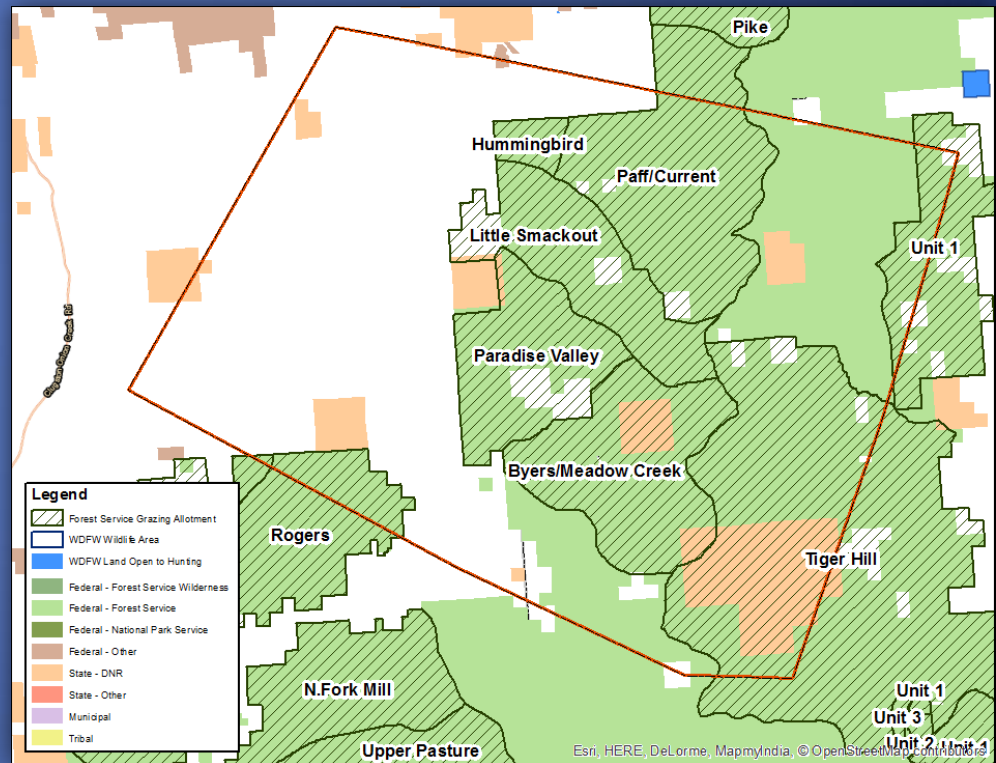


Smackout Pack

- Pack size: 5+
- Overlap with livestock: High
- Number of livestock: 650+
- History of depredations: No
- Collars: 2

2015 Plan

- Data sharing
- Damage prevention agreement
- Range riders

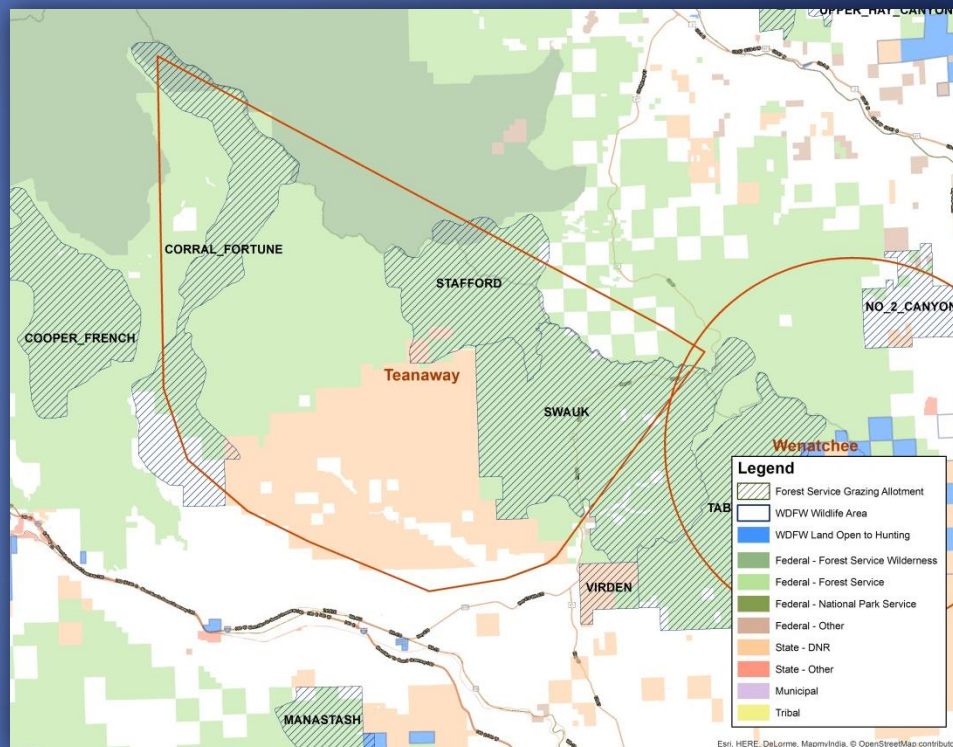


Teanaway Pack

- Pack size: 5+
- Overlap with livestock: High
- Number of livestock: 1,000+
- History of depredations: No
- Collars: 3

2015 Plan

- Data sharing
- Damage prevention agreement
- Range rider



2015 Summary

- Continue one-on-one contact with producers
- Continue using checklist
- Encourage damage prevention agreements with new producers, particularly in higher risk areas
- Work collaboratively with producers to craft deterrence plans
- Focus resources on areas evaluated at increased risk for potential conflict

Questions

Contact

Email: wildthing@dfw.wa.gov

Phone: (360) 902-2515

S Bar R Photography 2013

