

2014 WAAC Meeting

March 13, 2014

Last Resort KOA

New Name

- Wildlife Area Advisory Committee (WAAC)
 - Previously Citizens Advisory Group (CAG)
- WAAC Guidance document
 - “statewide WAACs are a critical conduit between the agency’s lands planning and management activities and interested citizens and stakeholders.”
 - “In order to improve trust and support with the local communities, WAACs should be used along with other outreach techniques to involve the public and other stakeholders in wildlife area concerns/issues.”

Meeting Ground Rules

- Everyone in the group is valuable and is treated with respect
- One person's concern is the group's concern
- Confine discussion to the meeting topic
- Listen to understand
- Do not interrupt
- No personal attacks

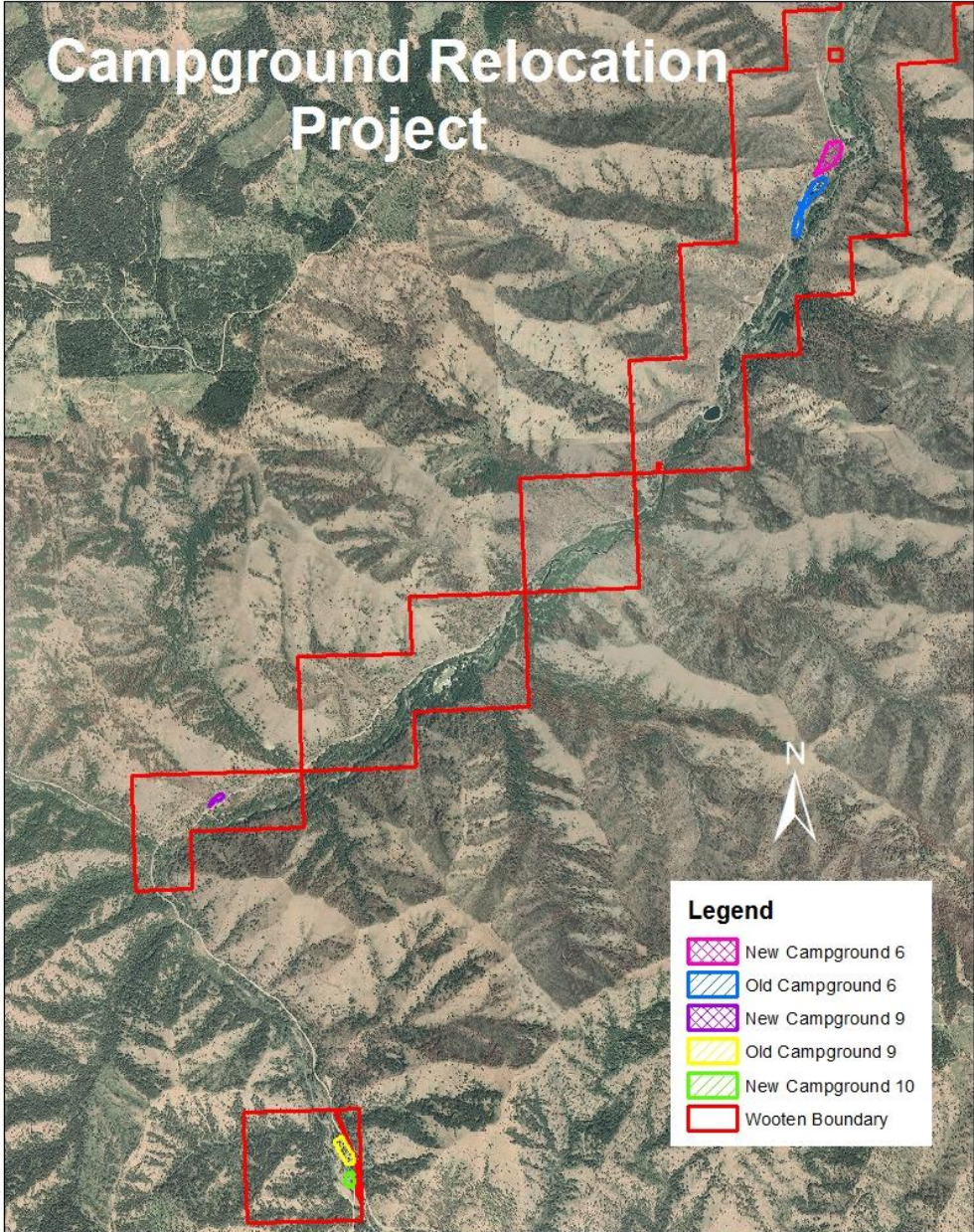
Management Plan Updates

- Highlights:
 - Campground Relocation
 - Grant funded projects
 - Large Wood Projects continuing
 - New kiosks installed in each campground
- Questions?

Floodplain Management Plan

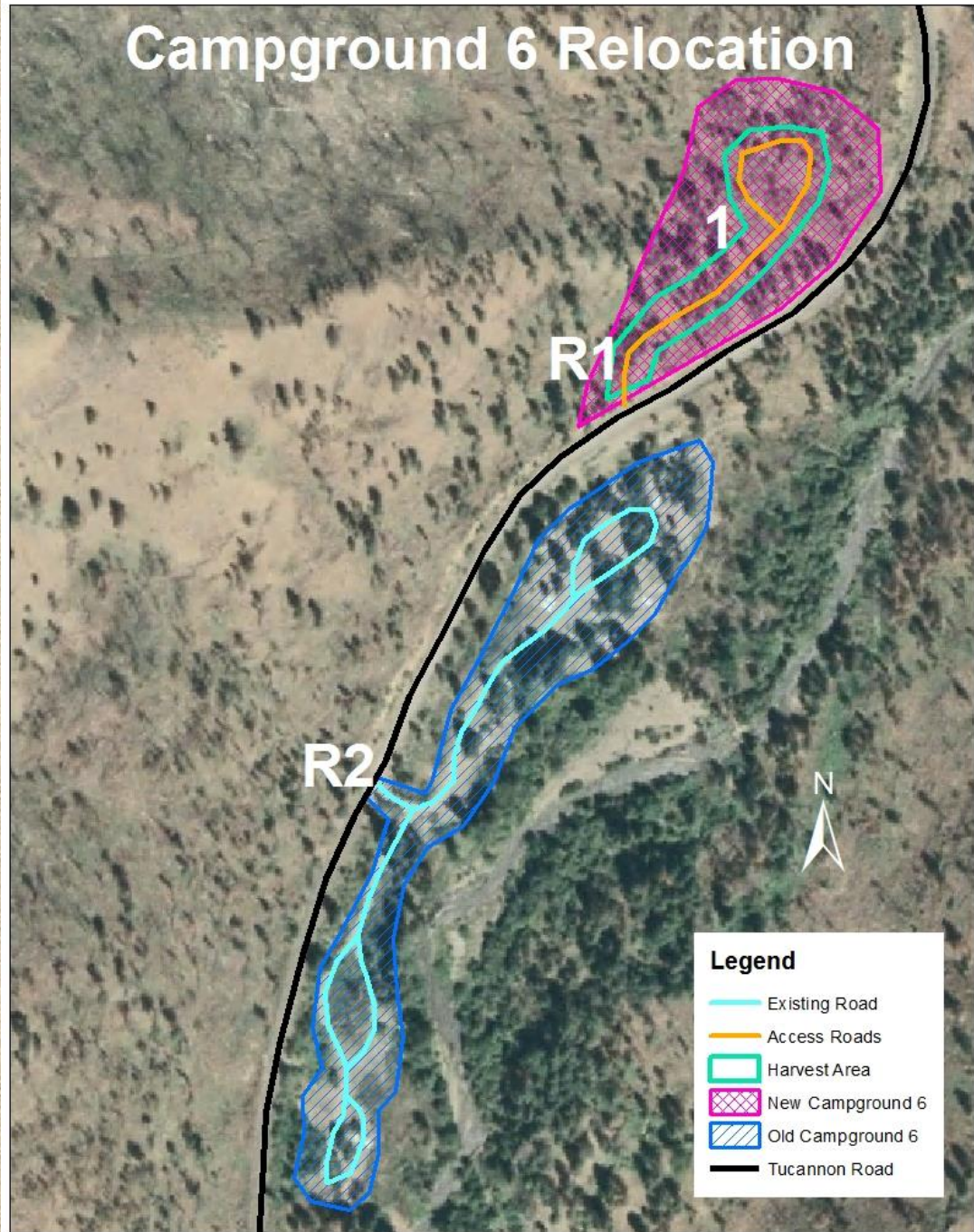
- Submitted for Capitol Projects for 2014-15
- Funded \$500,000
 - Ear-marked for Campground Relocation
 - Budget = \$300,000
 - \$200,000 left
 - Feasibility studies on prioritized list of lakes
 - Rainbow, Deer, Beaver-Watson, Spring, Big 4
 - Blue Lake in best shape
- Submitted again for Capitol Projects for 2016-17

Campground Relocation Project



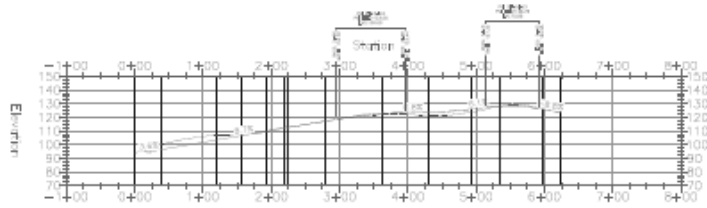
Map Created by: Kari Dingman, WDFW

Campground 6 Relocation



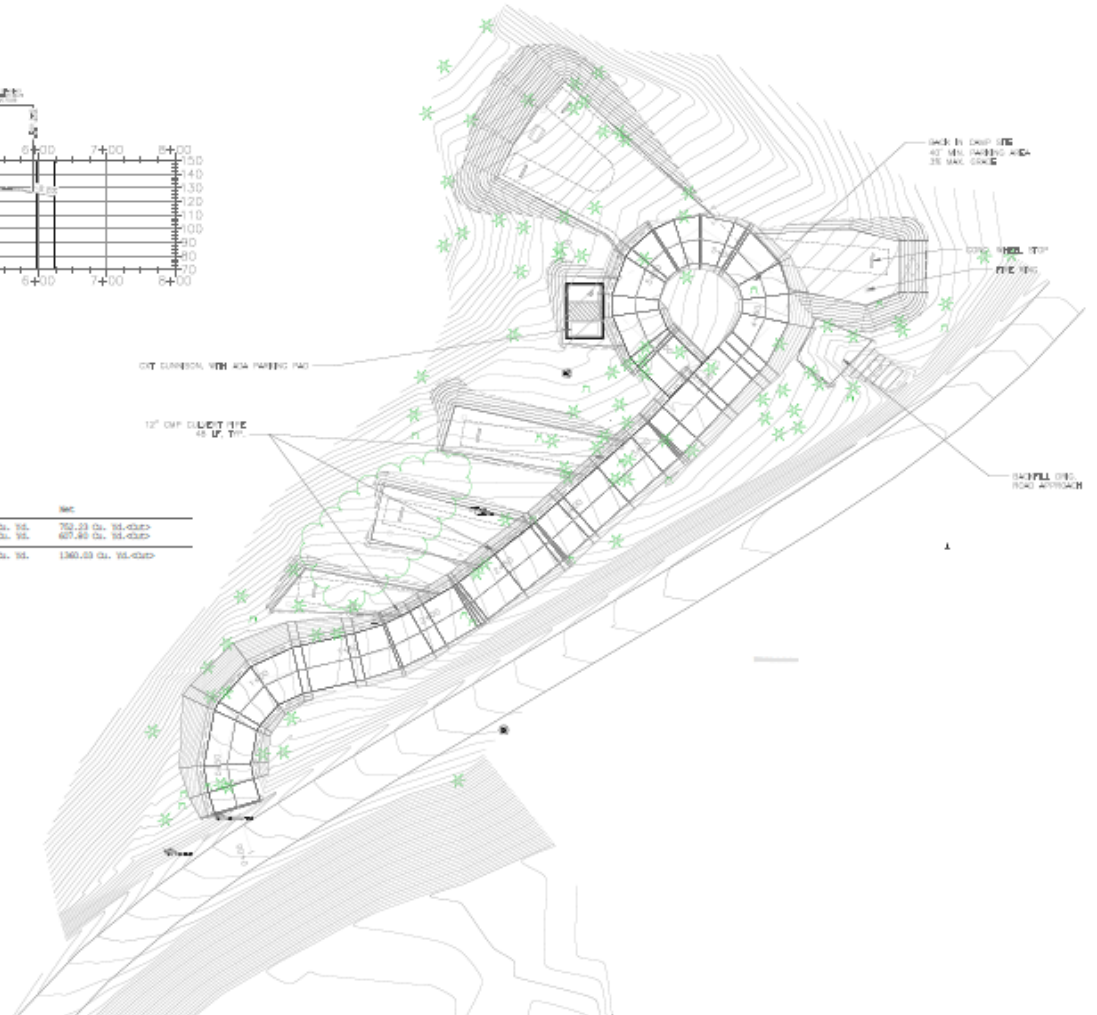
New Campground 6

CG6—Main PROFILE



Out/Fill Summary

Item	Cut Factor	Fill Factor	Sq Area	Cut	Fill	Sec
Gap 80 to Road	1.000	1.000	2490.24 Sq. Ft.	1189.80 Cu. Yd.	437.75 Cu. Yd.	752.33 Cu. Yd. @ 2%
Gap leading to Road	1.000	1.000	10479.51 Sq. Ft.	830.13 Cu. Yd.	222.34 Cu. Yd.	607.80 Cu. Yd. @ 2%
Totals			35469.77 Sq. Ft.	2020.12 Cu. Yd.	660.09 Cu. Yd.	1360.13 Cu. Yd. @ 2%



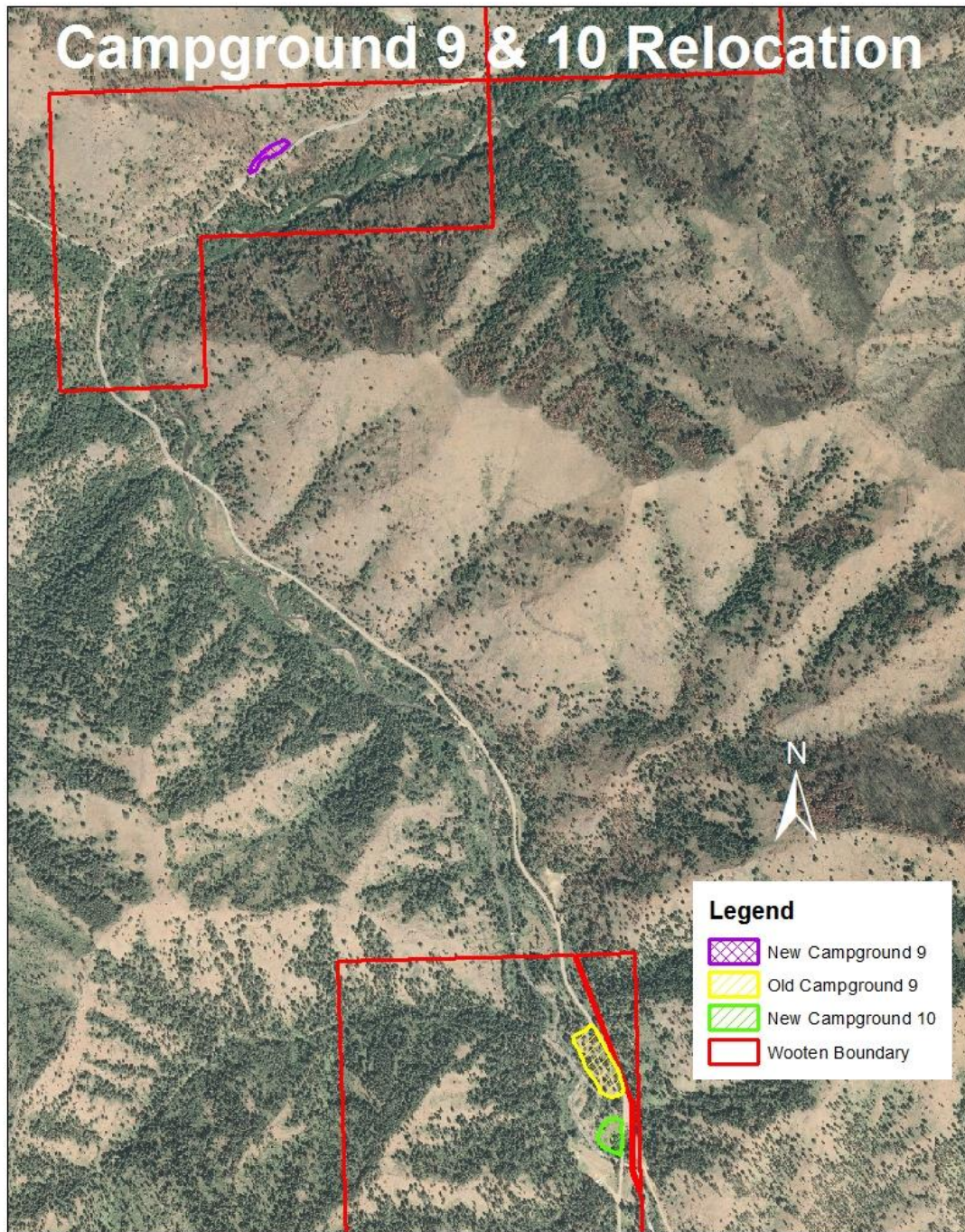
WASHINGTON STATE
DEPARTMENT OF FISH AND WILDLIFE

DATE	BY	SCALE	PROJECT NO.
ALL MEASUREMENTS ARE TO BE MADE ONE FOOT ON ORIGINAL DRAWINGS			
APPROVED AND BLANK FOR CONSTRUCTION			
NOT TO BE USED FOR CONSTRUCTION			

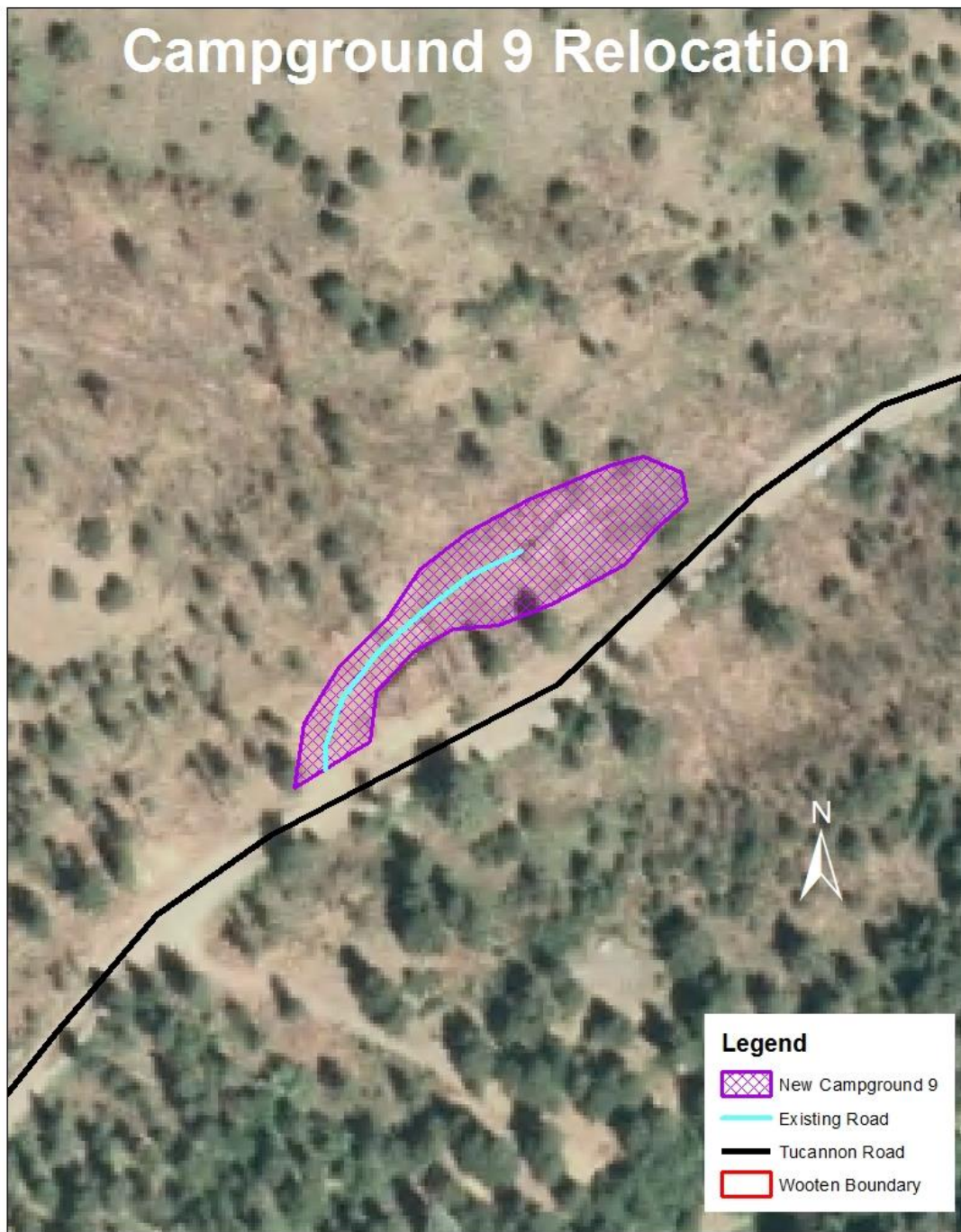
WOOTEN WILDLIFE AREA
CAMPGROUND RELOCATIONS
NEW CAMPGROUND NO. 6
PLAN AND PROFILE

PROJECT NO.
X
SHEET 1 OF 1

Campground 9 & 10 Relocation



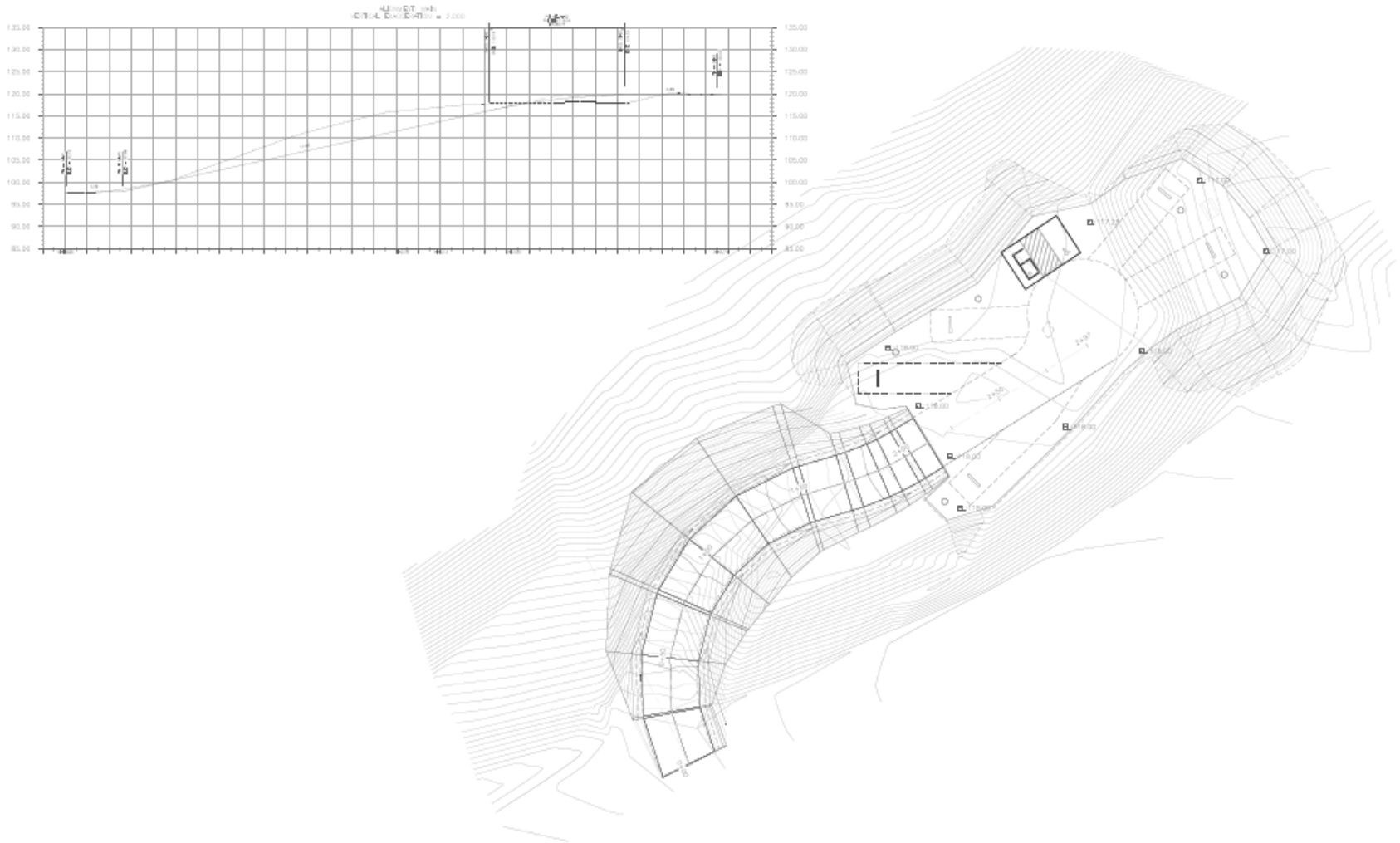
Campground 9 Relocation



Legend

-  New Campground 9
-  Existing Road
-  Tucannon Road
-  Wooten Boundary

New Campground 9



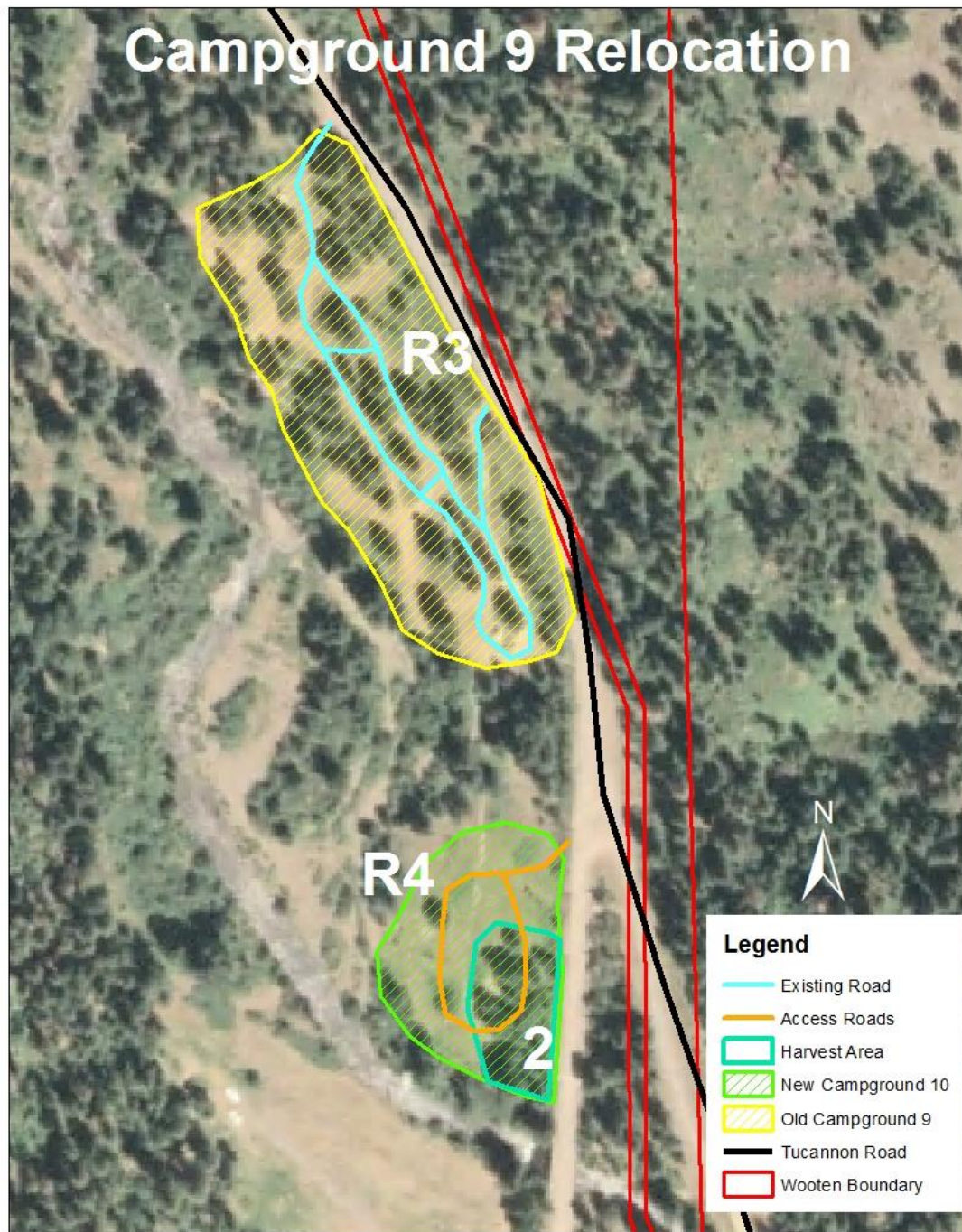
WASHINGTON STATE
 DEPARTMENT OF FISH AND WILDLIFE

DATE	DATE	DATE	DATE
BY	BY	BY	BY
CHECKED	CHECKED	CHECKED	CHECKED
APPROVED	APPROVED	APPROVED	APPROVED

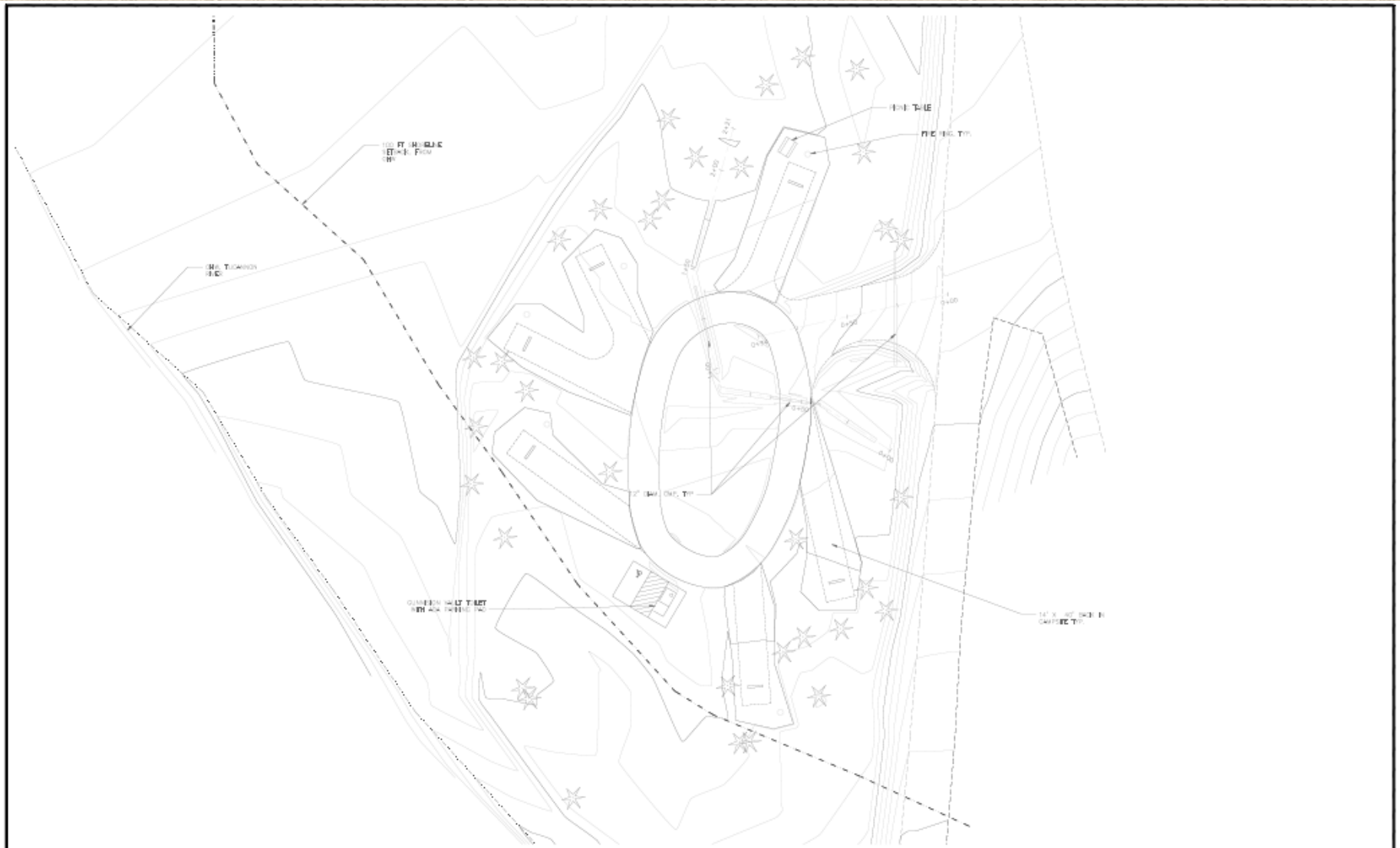
WOOTEN WILDLIFE AREA
 CAMPGROUND RELOCATIONS
 NEW CAMPGROUND NO. 9
 PLAN AND PROFILE

PROJECT NO.	X
SHEET	1
OF	1

Campground 9 Relocation



New Campground 10



WASHINGTON STATE
DEPARTMENT OF FISH AND WILDLIFE

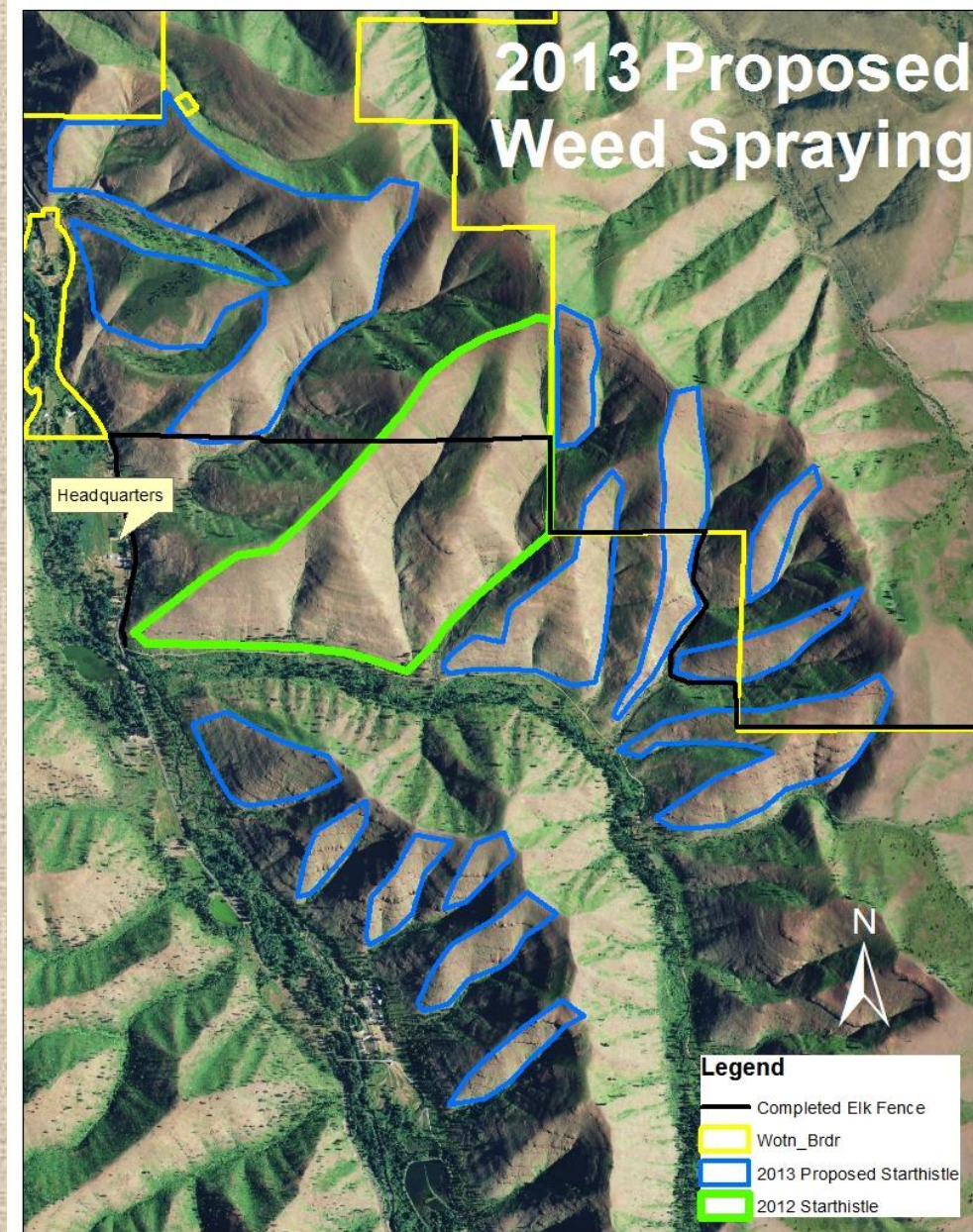
DATE	11/11/11	BY	...
SCALE	AS SHOWN	PROJECT NO.	...
DESIGNED BY	...	CHECKED BY	...
DRAWN BY	...	DATE	...

WOOTEN WILDLIFE AREA
CAMPGROUND RELOCATIONS
NEW CAMPGROUND NO. 10
PLAN

PROJECT NO.	X
SHEET	1
OF	1

Update on Grant Work

- Weed Spraying
 - 570 acres sprayed aerially for yellow starthistle in 2013
 - Blue Mountains Elk Initiative (BMEI) funds



Weed Spraying

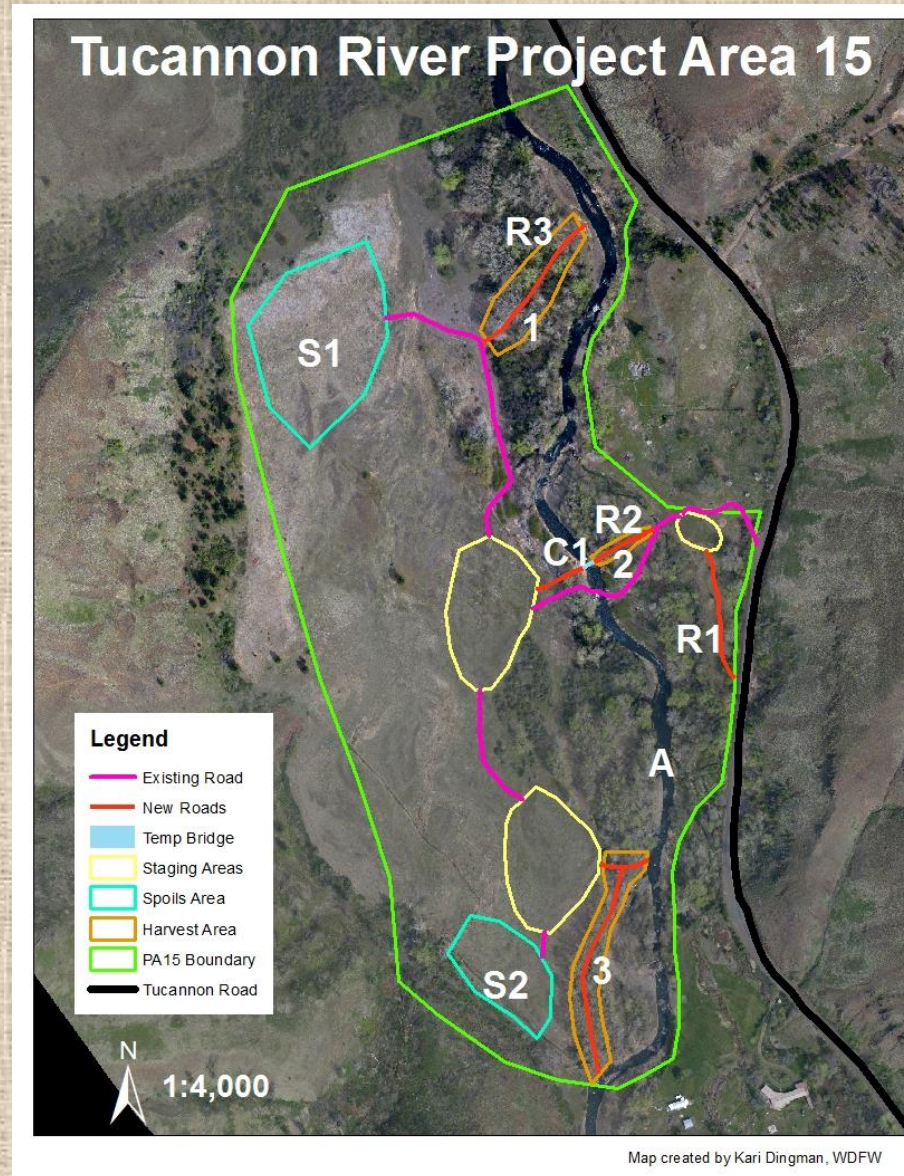
- 2014
 - Due to miscommunication within the Rocky Mountain Elk Foundation, several projects in the Blue Mountains were not funded this year.
 - Including weed spraying on the Blue Mountains Wildlife Area Complex (\$30,000)
 - National Wild Turkey Federation
 - \$1200
 - Weed control in and around Camp Wooten

Large Wood Projects

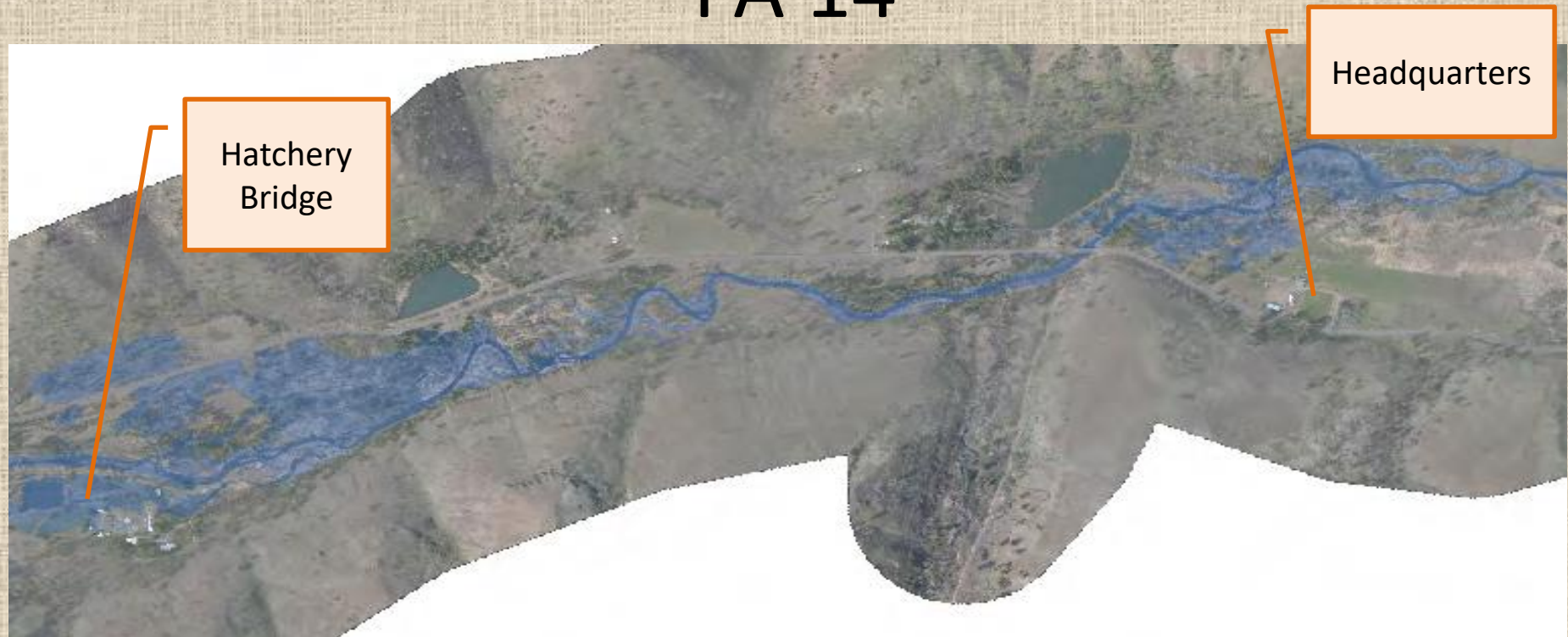
- 3 projects occurring simultaneously in 2014
 - Russell Unit
 - Hatchery Bridge to Wooten Headquarters
 - Mouth of Little Tucannon to Camp Wooten
 - And Panjab Bridge area
- All BPA funded for habitat restoration for spring Chinook and steelhead

Russell Unit – Project Area 15

- Large Wood structures constructed with excavator
- Reconnect old channels
- Construct new access road
 - Keep for public access and parking



Hatchery Bridge to Headquarters PA 14



- LW structures placed with excavator
- Removal of old road bridge near Spring Lake
- Reconnect floodplain and protect infrastructure at Hatchery, Spring Lake, and Headquarters

Little Tucannon to Camp Wooten



- Excavator and Helicopter project
- Umatilla Tribe is overseeing
- Reconnect floodplain and protect infrastructure at Camp Wooten

Outhouse Replacement

- Looking at funding options to replace the old fiberglass outhouses with new concrete outhouses
 - Currently have 6 old-style fiberglass outhouses
 - Not ADA approved



Kiosks

- Installed in Campgrounds 1,2,3,5,7,8, & 10
 - Campground 4 already had a kiosk
 - Campgrounds 6 & 9 are being relocated this summer
 - Kiosks will be installed when new campgrounds are completed



Beetle Kill Update

- Pine beetle infestation
 - Attacking mature pine trees in Tucannon drainage
 - Hazard trees
 - Removed around campgrounds and lakes
 - Dead trees left for wildlife trees and snags
 - Lewis' woodpecker requires 30 snags/acre



Grouse Flats/Wolf Fork PROPOSED Trade

- WDFW is investigating a land exchange
 - Grouse Flats – 640 ac
 - Wolf Fork – 770 ac
- Justification
 - Wolf Fork (currently owned by Bennett Lumber)
 - 1.4 miles of bull trout habitat
- Process
 - Notification flyer posted at Grouse Flats
 - US Fish & Wildlife Service has to approve exchange
 - NEPA will be done (WDFW will do SEPA)
 - Public meetings in future
 - Interested parties should contact WDFW to receive further notice

Management Plan Rewriting

- Time for updating and rewriting the management plans for each wildlife area
- Public version is on Wildlife Area website
- New items to include:
 - Agency initiatives (ex. Conservation Initiative)
 - Cultural Resource survey information
 - Consistent wording across all plans
- Proposing 3 WAAC meetings
 - Feedback on prioritization of issues
- Hope to have completed statewide in 10 years
 - We don't have scheduled start date yet

WAAC Communication

- WDFW wants regular communication with the WAAC
 - Quarterly, weekly
 - Quarterly newsletter with updates?
- Suggestions?? Preferences??

Questions??

