

2016 WAAC Meeting

March 17, 2016

Last Resort KOA

Meeting Ground Rules

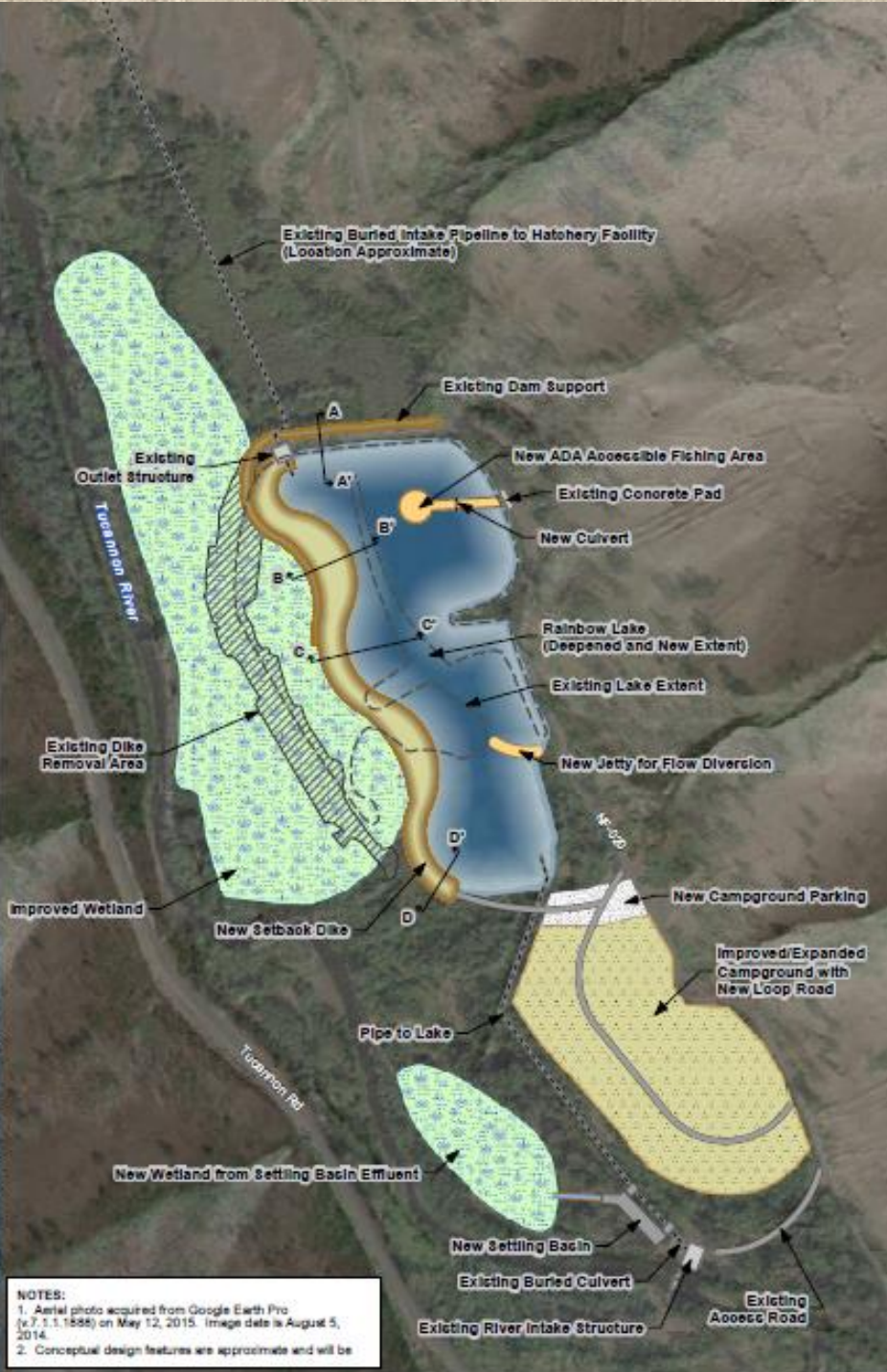
- Everyone in the group is valuable and is treated with respect
- One person's concern is the group's concern
- Confine discussion to the meeting topic
- Listen to understand
- Do not interrupt
- No personal attacks

Management Plan Updates

- Highlights:
 - Floodplain Management Plan
 - 2015 Fire
 - Headquarters Irrigation
 - Grant funded projects
 - Large Wood Projects continuing

Floodplain Management Plan

- Submitted for Capitol Projects for 2016-17
- Asked for \$4M, Got \$2M
 - Focus will be Rainbow Lake
 - Signed a contract with Anchor QEA for design work
 - Start field visits in March
 - Start working on permits immediately
 - Dredge Rainbow Lake summer 2017
- Will submit again for Capitol Projects for 2018-19



NOTES:
 1. Aerial photo acquired from Google Earth Pro (v.7.1.1.1584) on May 12, 2015. Image date is August 5, 2014.
 2. Conceptual design features are approximate and will be

Floodplain Management Plan

- Public Outreach

- Newsletter

- Emailed out to Interested Parties and posted on website

- Website :

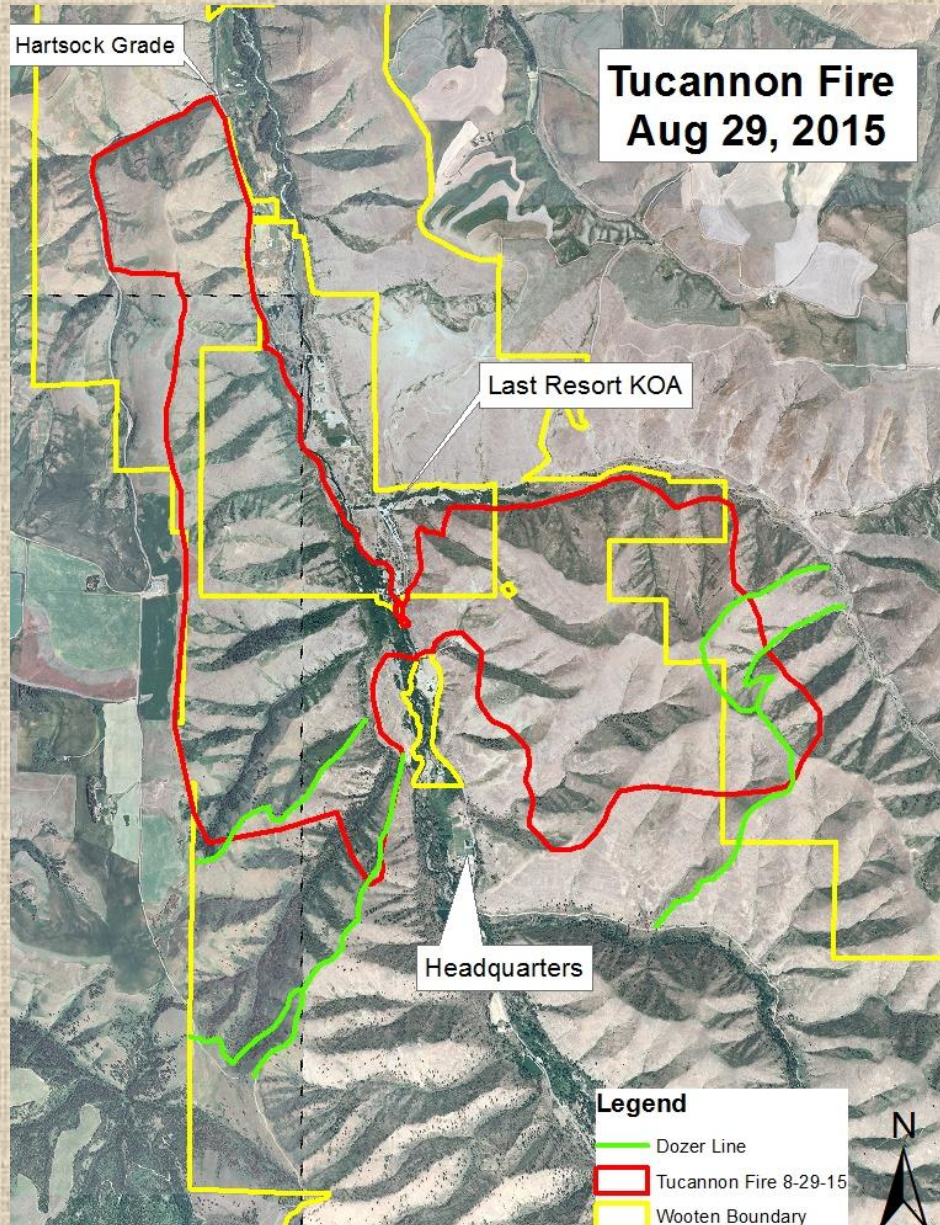
- http://wdfw.wa.gov/lands/wildlife_areas/wt_wooten/

- Link to FMP with regular updates and newsletters

- Public Meetings

- Tri-Cities on April 20, 4:30-6:30PM @ Richland Library
 - Dayton on April 21, 4:30-6:30PM @ Best Western Hotel

2015 Tucannon Fire



Update on Grant Work

- Weed Spraying

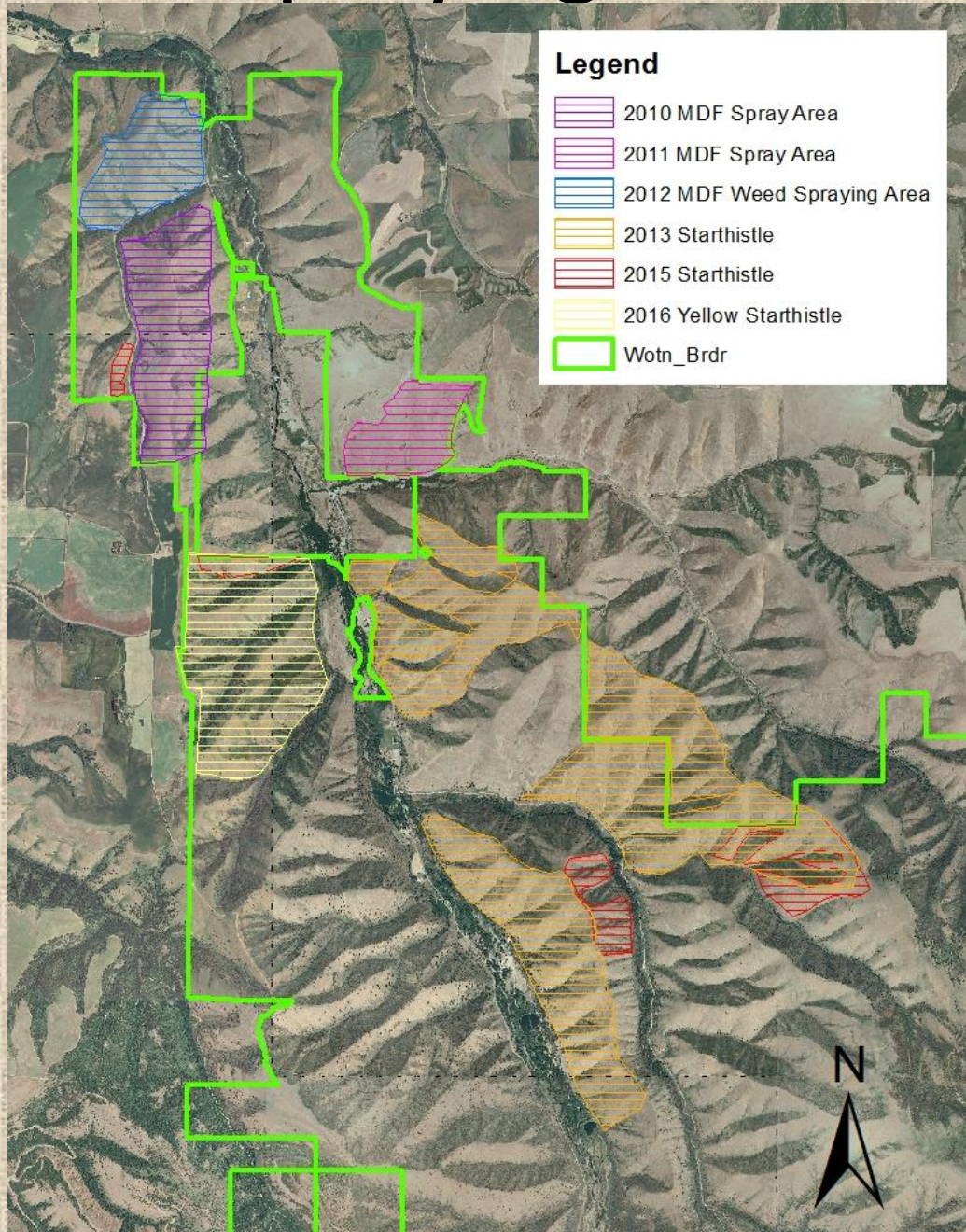
- 2015

- 265 acres were aerially sprayed using \$10,000 of RMEF funds
 - Received \$1262 in conjunction with State Parks from NWTF
 - Purchased herbicide
 - Sprayed with pickup, ATV, and backpack sprayers

- 2016

- Rocky Mountain Elk Foundation
 - \$30,000 for Blue Mountains WA Complex
 - » Large project planned for Chief Joseph Wildlife Area
 - » May be some money for herbicide or small spray project on Wooten

Weed Spraying Continued



2015 LW Projects

- PA 11 – Watson Lake to Deer Lake



2015 LW Projects

- PA 15 – Completed Russell Unit

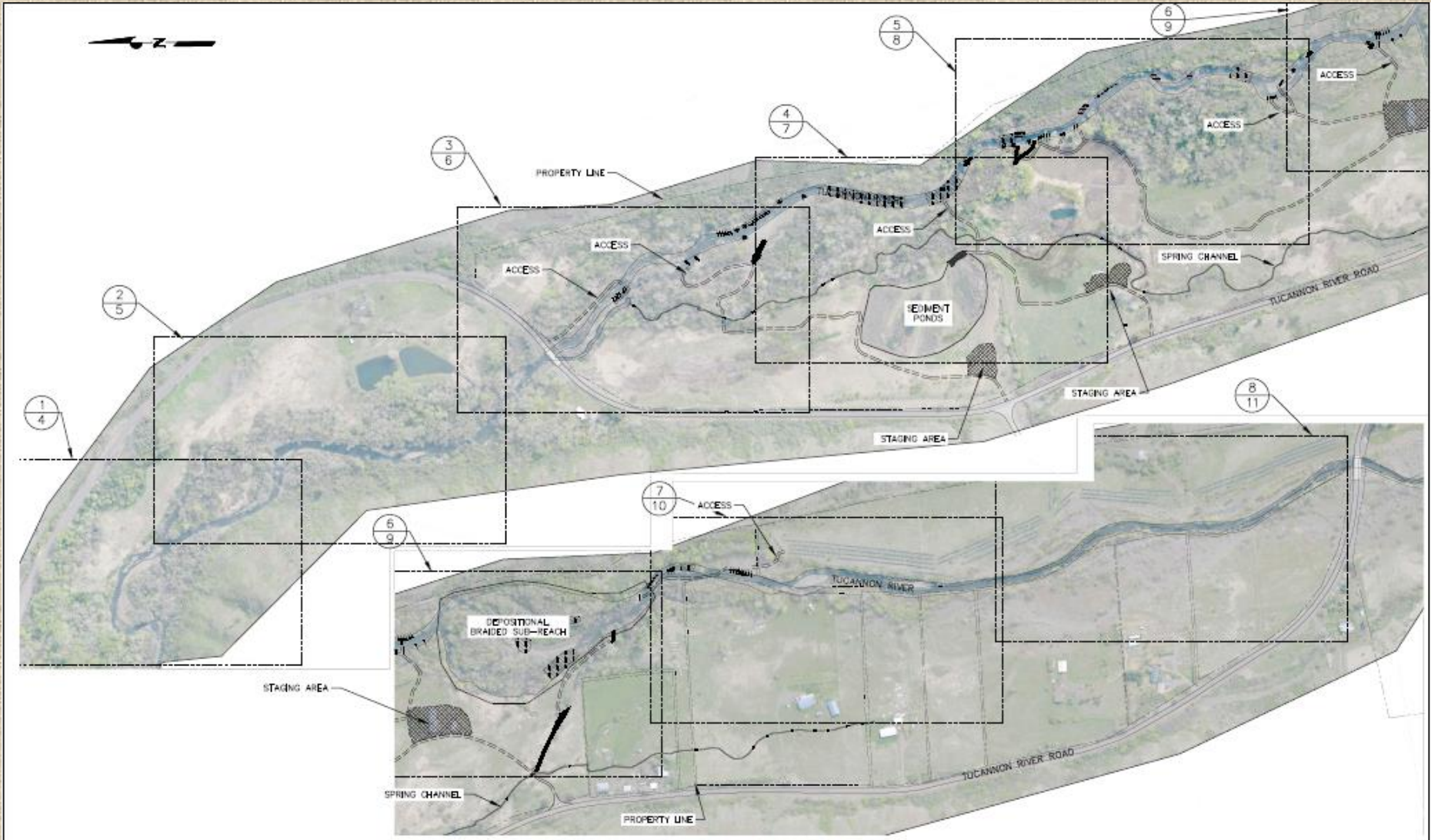


Large Wood Projects

- 1 project occurring in summer 2016
 - Little Tucannon
- 2 projects occurring in summer 2017
 - Tucannon Campground to Big 4 Lake
 - Helicopter
 - Hartsock Unit
 - Some helicopter, some engineered
- All BPA funded for habitat restoration for spring Chinook and steelhead

Hartsock Unit

PA 18



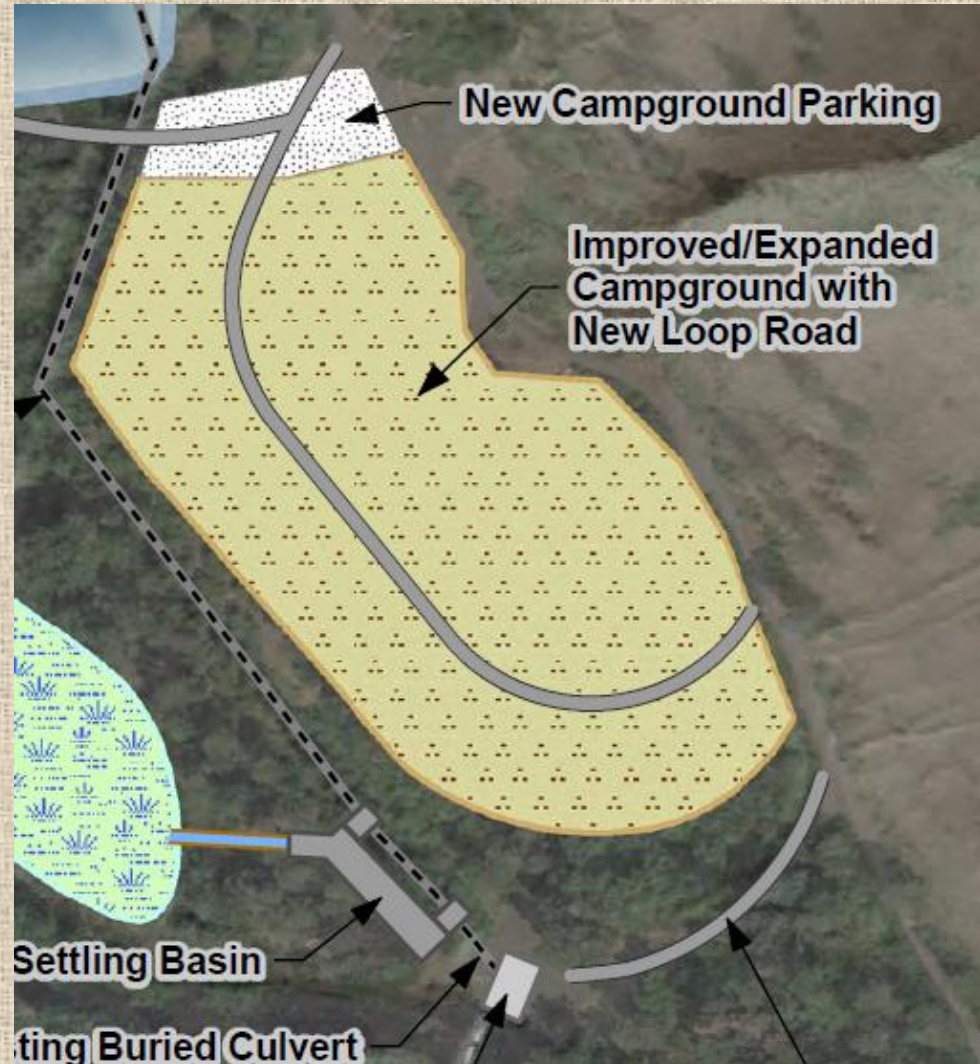
- LW structures placed with excavator and helicopter

Future LW Projects

- 2018
 - Rainbow Inlet to Hatchery Bridge
 - Predominately engineered log jams
 - Camp Wooten to Tucannon CG Bridge
 - Designs have not been started yet

Campground 3 Upgrade

- Submitting an RCO Grant to upgrade Campground 3
- Pull-through campground
- New vault toilets



Outhouse Replacement

- Still looking at funding options to replace the old fiberglass outhouses with new concrete outhouses
 - Currently have 6 old-style fiberglass outhouses
 - Not ADA approved
 - Possible statewide project

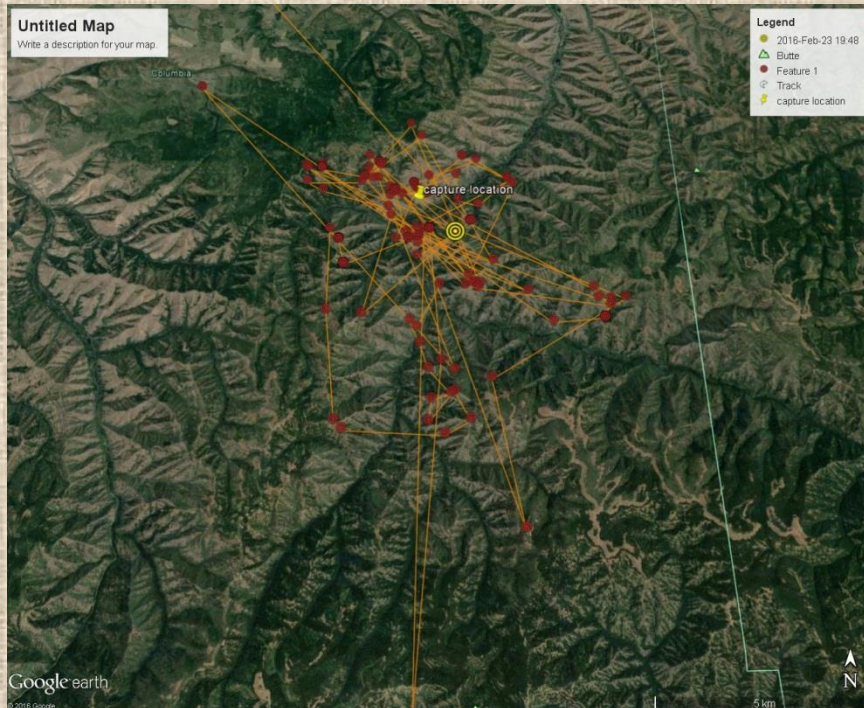


Bighorn Sheep Update

- Currently have 23 sheep in the herd
 - Only 1 lamb survived from last year
- Brought 7 new ewes from Oregon in Jan 2016
 - The ewes should all be bred
- Bringing 15 sheep from Montana in Mar 2016
- Not continuing the lamb-collaring project
 - Collared 3 lambs last spring; 1 survived until last week

Golden Eagle Update

- 4 known territories on Wooten Wildlife Area
- Captured adult male from Camp Wooten Territory
- Captured juvenile from Hartsock nest in 2015



Wolf Update

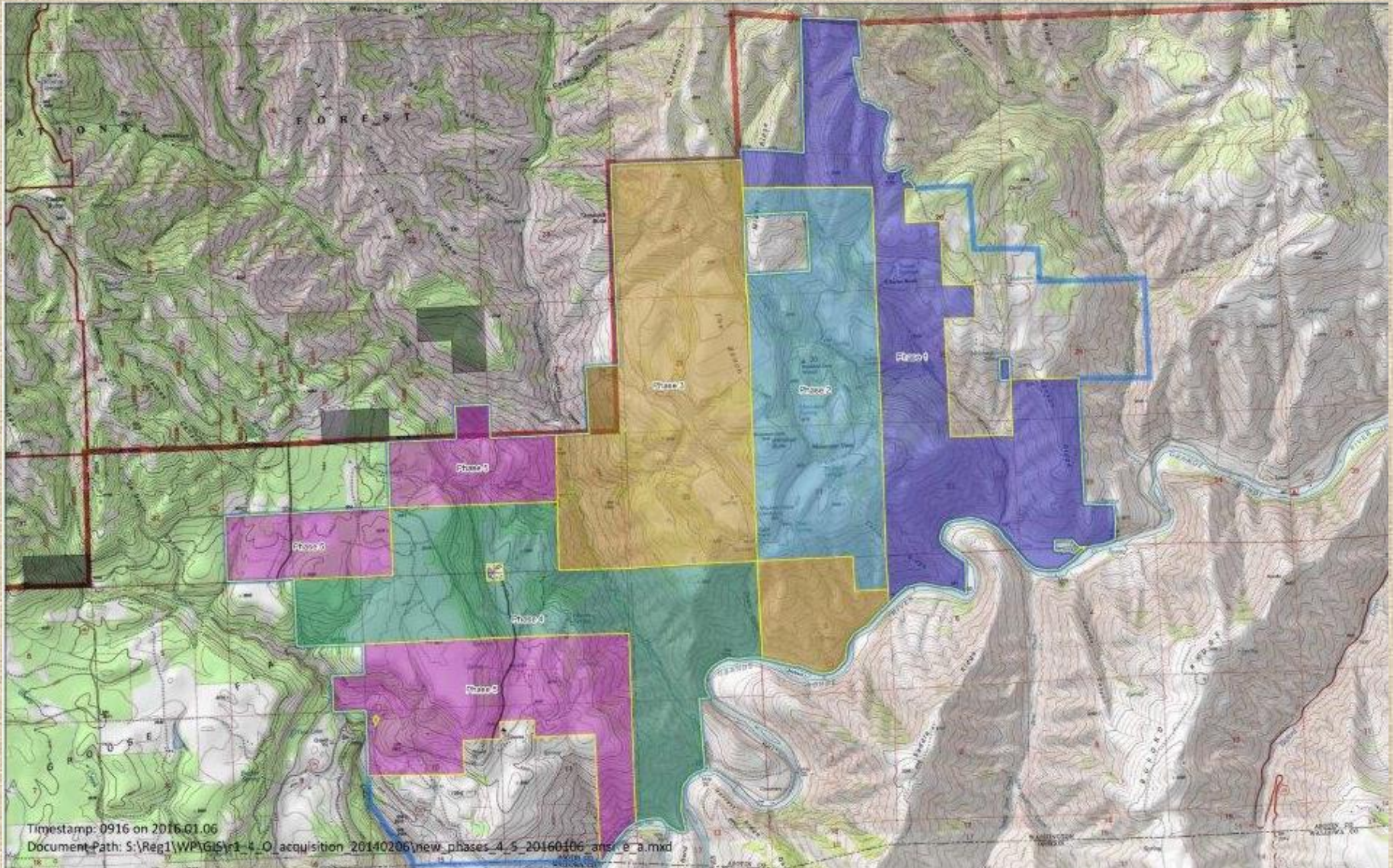
- Tucannon Pack
 - Successfully bred in 2015
 - At least 3 pups survived
 - Male's collar died in Nov/Dec
 - Capture effort planned for later in spring
- At least 1 collared wolf dispersed from Oregon
 - Has returned to Oregon
- OR14 was killed by landowner west of Wildlife Area
 - Older, emaciated male from Oregon

Walla Walla Property Update

- Stovall Road Unit
 - 8 acre field of mostly poison hemlock
 - Sprayed last spring, tilled up and sprayed again in fall
 - Bought grass seed and will seed spring 2016
- McDonald Bridge Unit
 - Severe weed issues along dike removal project
 - Plan to continue to treat this spring

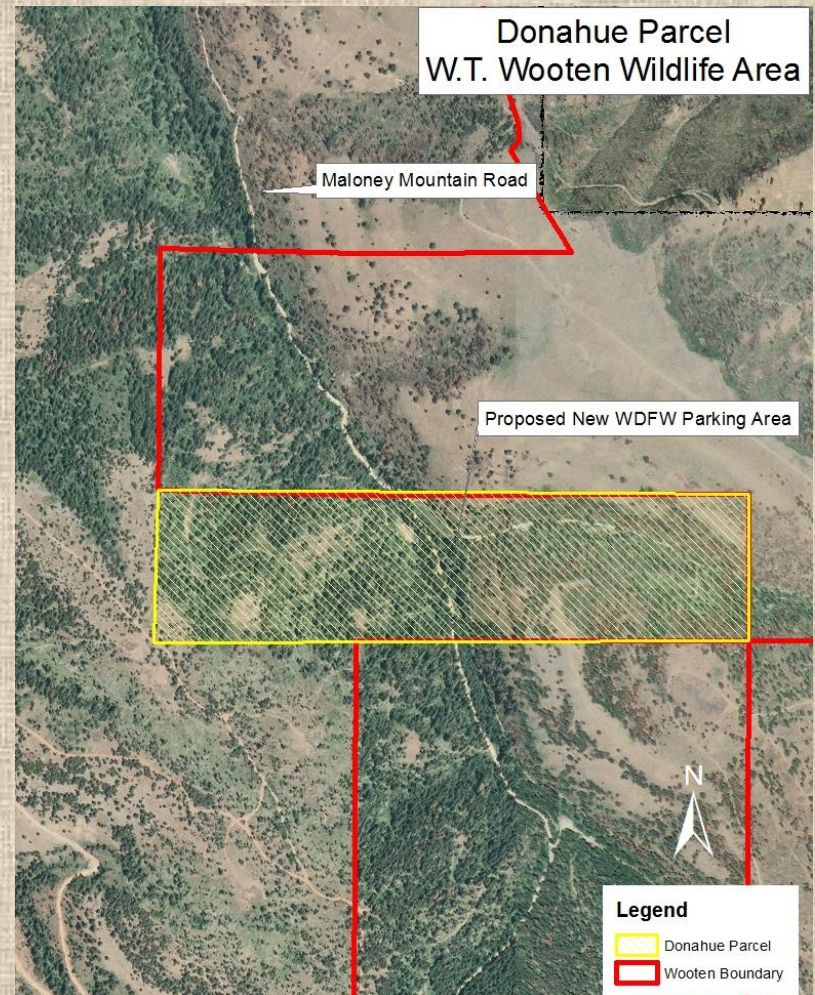
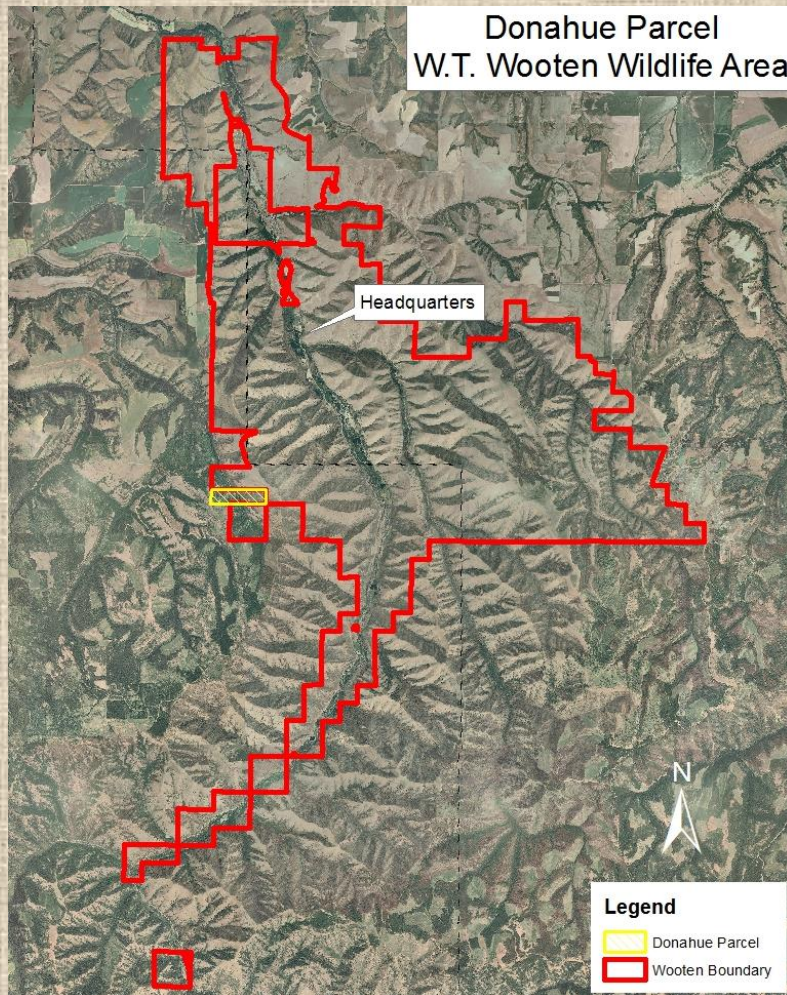
4-O Ranch Property Update

- 10,498.28 acres (\$19,132,340)



Donahue Property

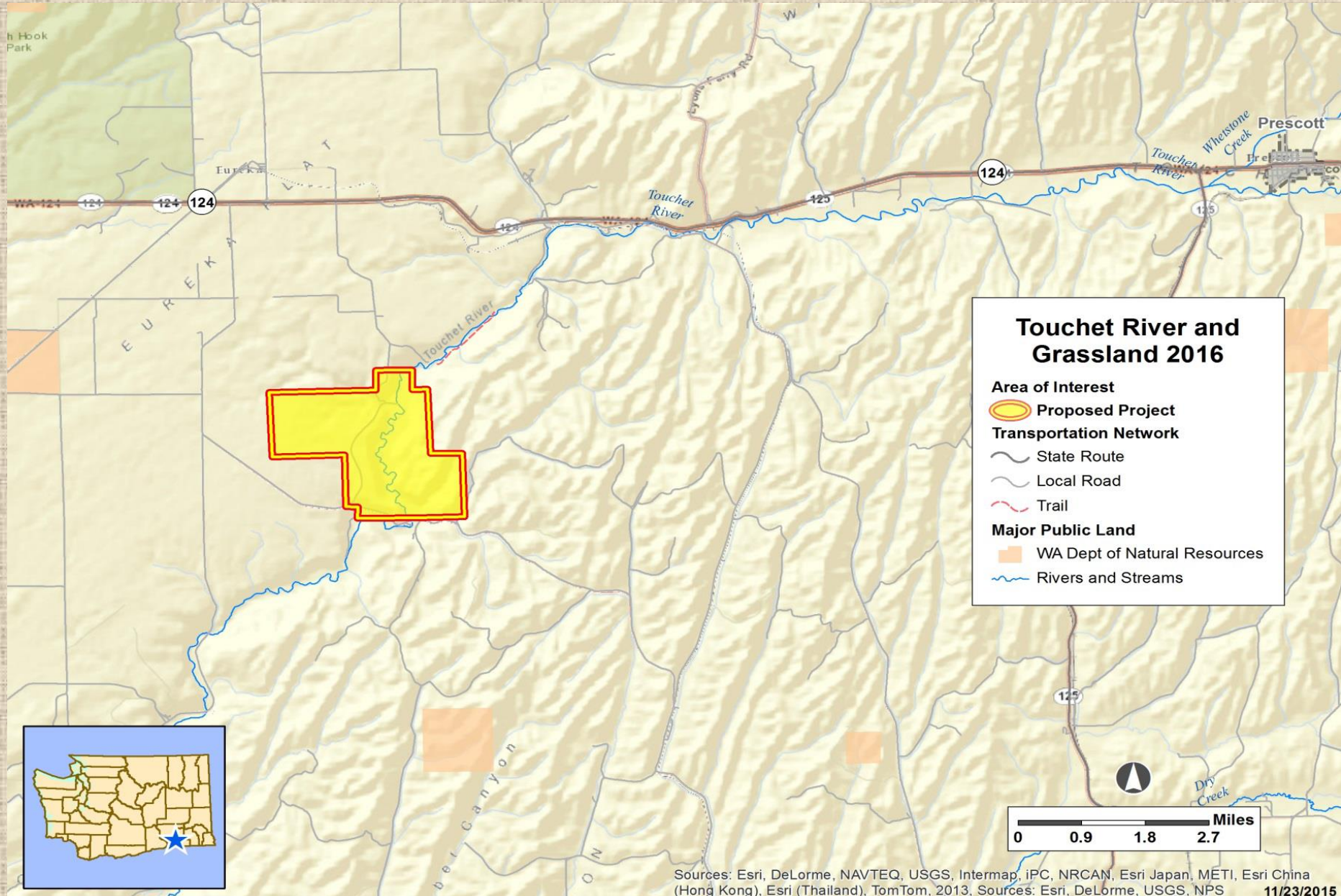
- RMEF purchased 58 acre Donahue parcel
 - WDFW will purchase from RMEF



Touchet River and Grassland

- 2,560 acres
- Walla Walla County
- Conservation Values
 - Critical riparian habitat for steelhead and bull trout
 - Intact floodplain and river channel
 - Ferruginous hawk and yellow billed cuckoo
 - Mature cottonwood habitat, inland sand dunes
 - White-tailed deer, mule deer and upland birds
- Recreation Values
 - Hunting
 - Fishing
 - Wildlife viewing

Touchet River and Grassland



Fish Regulation Changes

- Blue Lake & Spring Lake
 - Rule change July 1, 2015 = open year round
- Curl Lake
 - Open May 15 instead of 4th Saturday in April
 - Steelhead smolt will be acclimated in Curl Lake after the spring Chinook are released into the river

Management Plan Rewriting

- Time for updating and rewriting the management plans for each wildlife area
- Public version is on Wildlife Area website
- New items to include:
 - Agency initiatives (ex. Conservation Initiative)
 - Cultural Resource survey information
 - Consistent wording across all plans
- Proposing 3 WAAC meetings
 - Feedback on prioritization of issues
- Hope to have completed statewide in 10 years
 - We don't have scheduled start date yet

WAAC Communication

- WDFW wants regular communication with the WAAC
 - Biennial starting in 2015
 - Newsletter in fall with updates on what is happening
 - More frequent if something major occurs
- Suggestions?? Preferences??

Questions??

