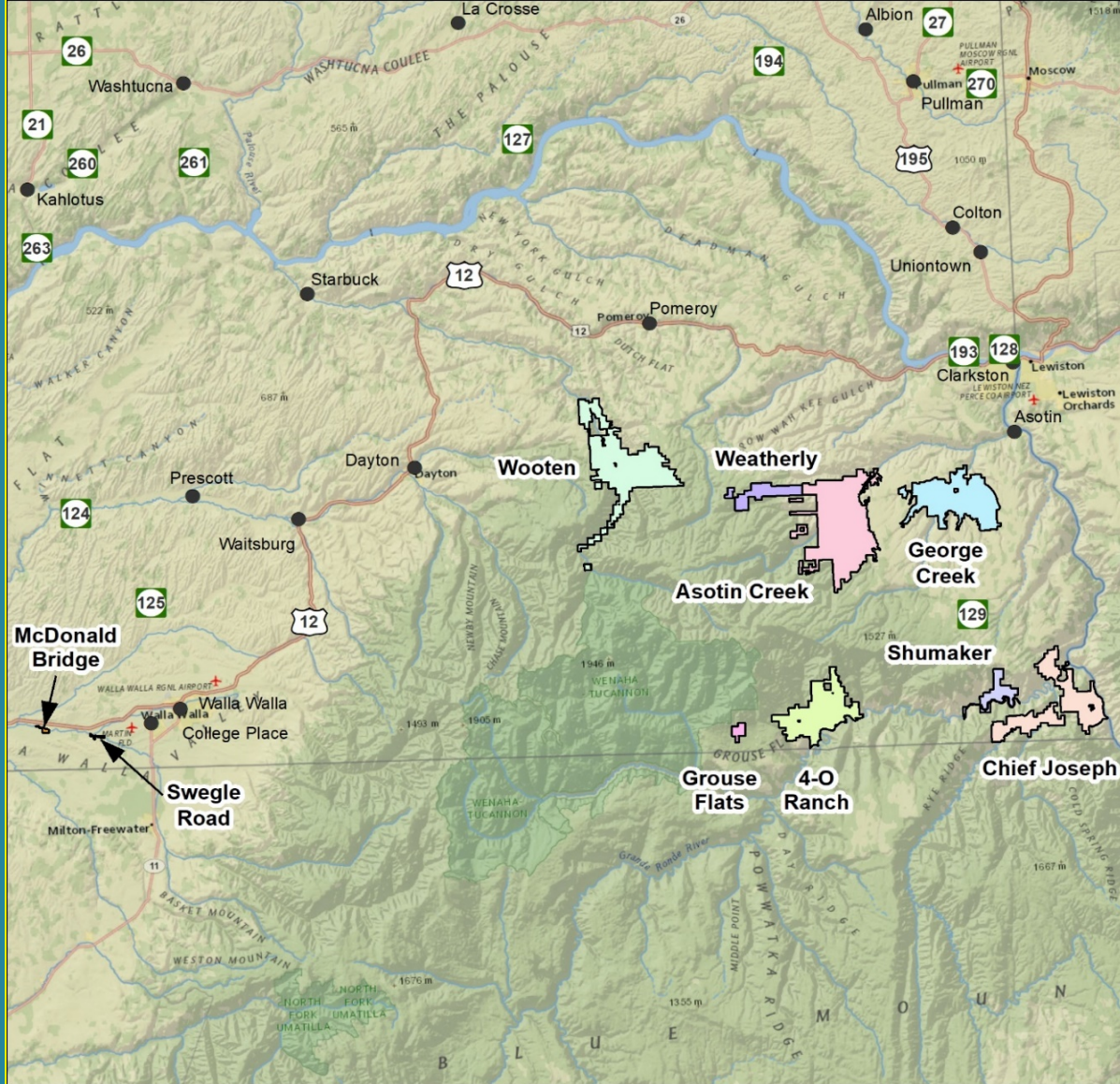






Blue Mountains Wildlife Areas

Draft Management Plan

October 2018



Blue Mountains Wildlife Areas

- | | | | |
|---|-------------------|---|----------------------|
|  | 4-O Ranch Unit |  | McDonald Bridge Unit |
|  | Asotin Creek Unit |  | Shumaker Unit |
|  | Chief Joseph Unit |  | Swegle Road Unit |
|  | George Creek Unit |  | Weatherly Unit |
|  | Grouse Flats Unit |  | Wooten Unit |



Topics



- Purpose of Plan
- Planning Process
- Plan Highlights
- Comments

Purpose of the Wildlife Area Plan

- Sets vision for next 10 years
- Guides management activities
- Ensures lands are managed consistent with WDFW mission and funding obligations
- Includes tribal, advisory, and public participation



Planning Process

1. Scope the Plan
2. Create Goals and Objectives
- 3. Prepare Draft Plan**



Participation in all phases

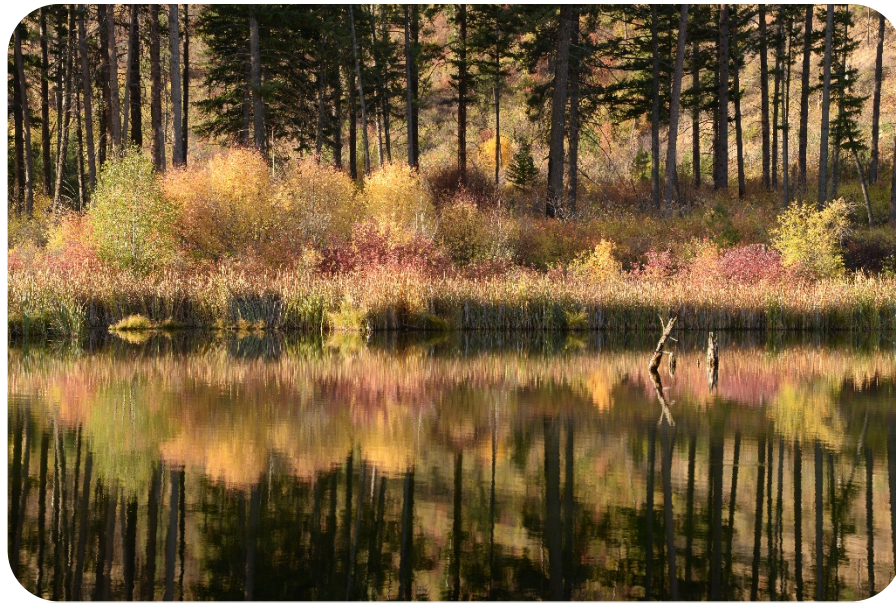
Plan Sections

Part I: Wildlife Area Planning Overview

Part II: Management and Planning

Part III: Species and Habitat Management

Part IV: Appendices



I: Wildlife Area Planning Overview

❖ Planning Overview

- Agency Mission, Planning Framework, Plan Purpose, Statewide & Goals, Public involvement

❖ Intro to the Blue Mountains Wildlife Areas

- WLA Vision
- Success Stories

❖ Wildlife Area Description

- Overall, by wildlife area and unit

Vision for Asotin Creek.....



....is to protect native grass and riparian habitats and big game winter range, while providing recreation and economic opportunities consistent with healthy habitat management.

Vision for Chief Joseph.....



.... is to protect native range and forest habitats, cultural resources, and big game winter range, while offering excellent hunting opportunities and world-class fisheries on the Snake and Grande Ronde Rivers.

Vision for W.T. Wooten....



.....is to restore habitat for ESA listed fish and protect big game winter range, while offering quality outdoor education and recreation opportunities, such as fishing, camping, and hunting.

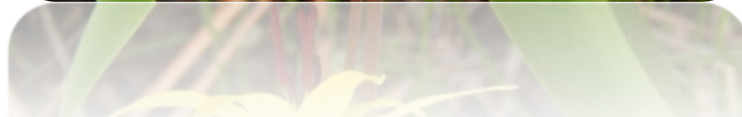
Success Stories

Restoring the forest in Grouse Flats

Improving the Tucannon River floodplain

Controlling noxious weeds

Partnering with Rocky Mountain Elk Foundation



II: Management and Planning

❖ Land ownership and management

- Acquisition history, purpose
- Agreements (leases, permits)

❖ Management Setting

- Administration, staffing, operating funds
- Facilities and maintenance, roads, land use, cultural resources, enforcement
- Stewardship & volunteers
- Recreation

Stewards & Volunteers

Group	Types of Activities
Twin River Backcountry Horseman	Horse camp – trail rides - cleanup
Lewis & Clark ATV Club	Trail rides – cleanup – fence & water work
Rocky Mountain Elk Foundation	Habitat improvement – fence & water work
Inland Northwest Wildlife Council	Fence work
Washington Rare Care	Native plant surveys
Master Hunter Program	Volunteer work for points towards their Master Hunter Program.
Audubon's Canyon Birders	Bird surveys and bird watching field trips.
	Work party to clean-up of the Asotin Creek target shooting area



Recreation

➤ Hunting

- Elk, deer, bear, cougar, pheasant, small game, turkey, upland bird

➤ Fishing

- Rainbow trout, steelhead, smallmouth bass

➤ Nature enjoyment

- Wildlife, birds, flowers, scenery

➤ Camping

➤ Hiking, walking, horseback riding

➤ Other

- Shed antler collecting, target shooting, geocaching



III: Species and Habitat Management

❖ Physical Characteristics

- Geology, hydrology, climate

❖ Ecological Values

- Ecological integrity and habitat connectivity

❖ Species Management

- Species list
- Game, Diversity (non-game), Fish

III: Species and Habitat Management

❖ Habitat Management

- Forests, fire, weeds, restoration

❖ Climate change approach

- Resource impacts, planning implications

Target Species

Bighorn sheep

Elk

Mule deer

Bull trout

Steelhead

Chinook salmon

River lamprey

Lewis's woodpecker

Morrison's bumblebee

Grasshopper sparrow

Black-backed woodpecker

Golden eagle

Northern goshawk

Short-eared owl

Gray wolf



Forest Plan

Treatment Unit	Estimated Acres*	Task
Mountain View, 4-O Ranch Wildlife Area	300 to 500	Commercial Thin
Mountain View, 4-O Ranch Wildlife Area	up to 500	Non-commercial Thin
Weatherly Wildlife Area	300	Commercial Thin
Weatherly Wildlife Area	up to 200	Non-commercial Thin
W. T. Wooten Wildlife Area	550	Reforestation
W. T. Wooten Wildlife Area	100	Non-commercial Thin
Smoothing Iron Ridge, Asotin Creek Wildlife Area	200	Commercial Thin
Smoothing Iron Ridge, Asotin Creek Wildlife Area	150	Non-commercial Thin
Sawmill, 4-O Ranch Wildlife Area	500	Commercial Thin

IV: Appendices

- Species and Habitat Information
- Weed Management Plan
- Fire Response Information
- Research and Other Studies
- Forest Management Plan
- Restoration Summary/Plan
- Stewardship Plan (Section 6) for 4-0 Ranch Unit
- Water Access Summary
- Cultural Resources Summary
- Public Response Summary

Goals & Objectives



Ecological Integrity

- Establish baseline and goals
- Conduct assessment of prairie habitat & protection strategy
- Plan to conserve Spalding's catchfly
- Repair, replace, maintain fences
- Control weeds
- Manage forest



Sustain species through habitat and population management

- Remove fish barriers
- Protect bighorn sheep from domestics
- Protect wildlife by removing fencing
- Reduce threat of lead poisoning to wildlife
- Reduce and manage human/wildlife conflicts
- Implement Wooten Floodplain Management Plan

Protect wintering wildlife from human disturbance

- Maintain seasonal closures/implement new ones
- Limit off road vehicle travel; close temporary roads

Achieve species diversity at levels consistent with healthy ecosystems

- Develop species-specific actions
- Conduct survey for species with greatest conservation need

WASHINGTON'S
STATE WILDLIFE ACTION PLAN
2015 Update



Provide for and improve opportunities for hunting and fishing

- Increase knowledge of opportunities; promote hunting other than big game
- Review 4-0 special hunt status biennially
- Assess ADA hunt opportunities
- Assess opportunity to expand Green Gulch ATV access
- Continue to provide fishing opportunities on Wooten

Provide and improve other recreational opportunities

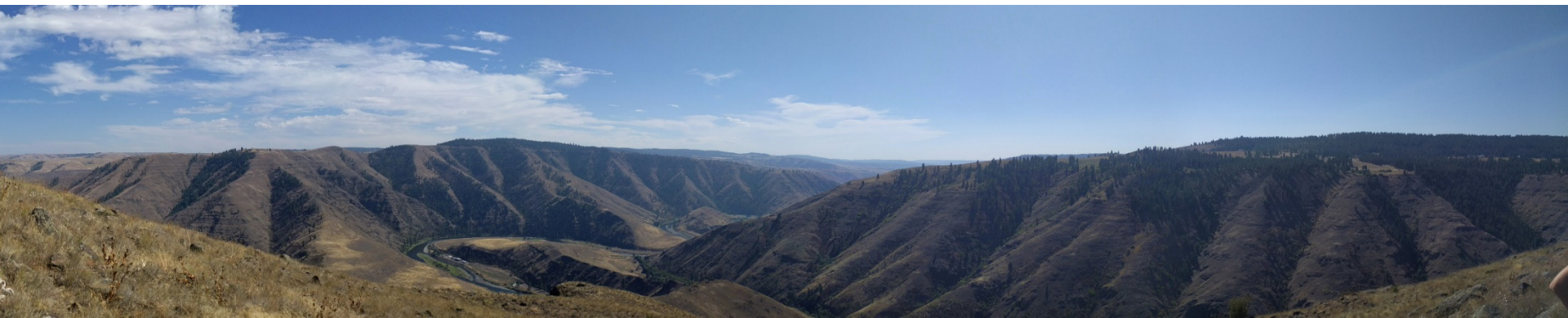
- Develop trail connection plan
- Improve and maintain trails
- Develop/improve campgrounds
- Improve conditions at shooting range
- Assess restroom needs
- Develop interpretive site or signs on 4-0 Ranch
- Develop plan for non-consumptive recreation
- Develop recreation maps

Stakeholder involvement and local relationships

- Continue Wildlife Area Advisory work
- Expand volunteer base
- Continue grazing and agriculture when beneficial to wildlife and consistent with policies
- Increase patrols to reduce poaching

Next Steps

- Advisory committee and tribes provide comments by Nov 21
- Staff review comments and edit plan if needed
- 30-day Public Comment period Nov 26-Dec 30
- Edit as needed; prepare comment summary
- Final plan formatted; Director's approval



Thank You!

Bob Dice, *Blue Mountains Wildlife Areas Manager*

(509) 758-3151

Bob.dice@dfw.wa.gov

Kari Dingman

(509) 843-1530

Patricia Jatczak, *Project Manager*

(360) 902-2815

Patricia.Jatczak@dfw.wa.gov