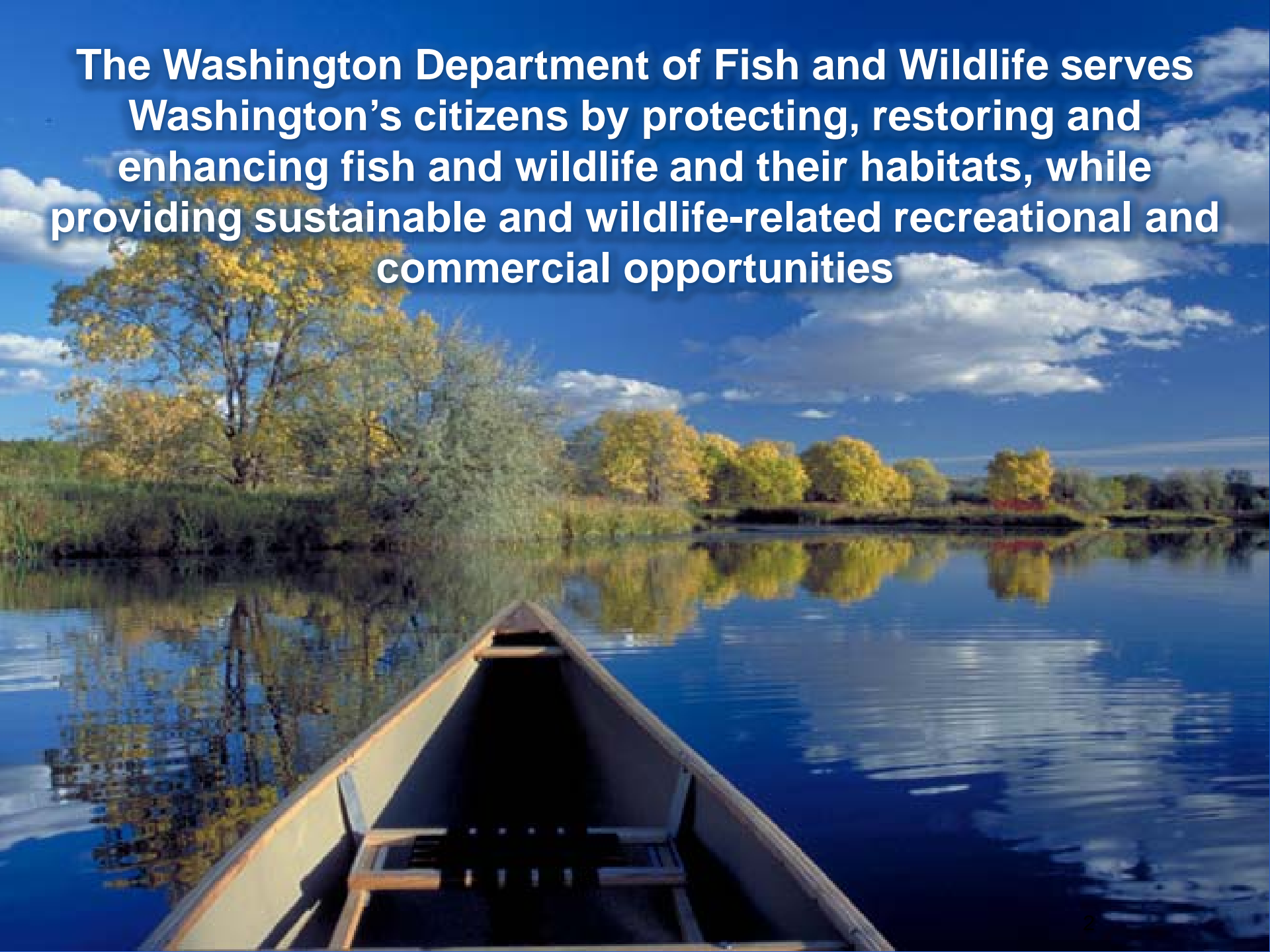




# **Lands 20/20 Proposed Acquisition Grant Submittals for 2012**

**Dave Brittell  
Special Assistant**

**The Washington Department of Fish and Wildlife serves Washington's citizens by protecting, restoring and enhancing fish and wildlife and their habitats, while providing sustainable and wildlife-related recreational and commercial opportunities**



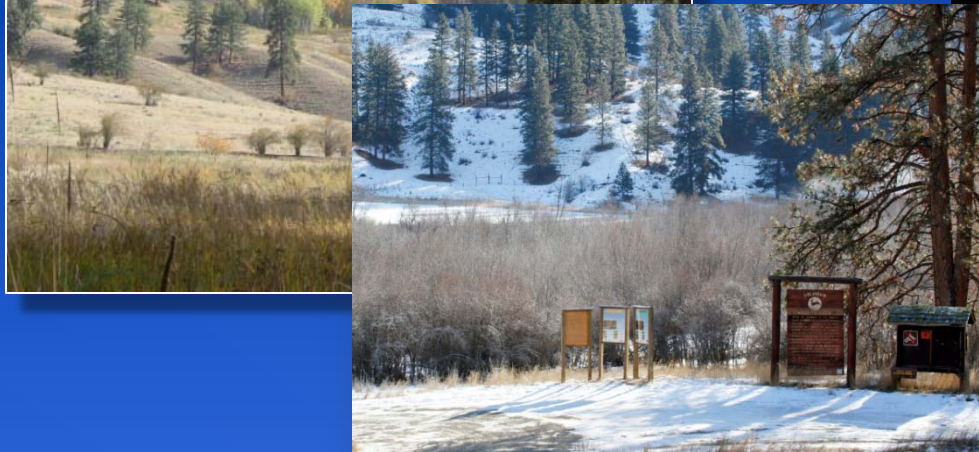
# WDFW Conservation Tools

- **Regulatory**
  - › Hydraulic Project Approvals (HPA)
  - › State Environmental Policy Act (SEPA)
  
- **Land Use Planning Assistance**
  - › Critical Area Ordinance development (GMA)
  - › Voluntary Stewardship Program (Ruckelshaus)
  - › Priority Habitats and Species Databases
  - › Conservation Opportunity Framework
  
- **Private Lands Partnerships**
  - › Land Owner Incentive Programs
  - › Coordinated Resource Management Plans
  
- **Real Property Management and Transactions**
  - › Fee Title Acquisition
  - › Conservation Easements



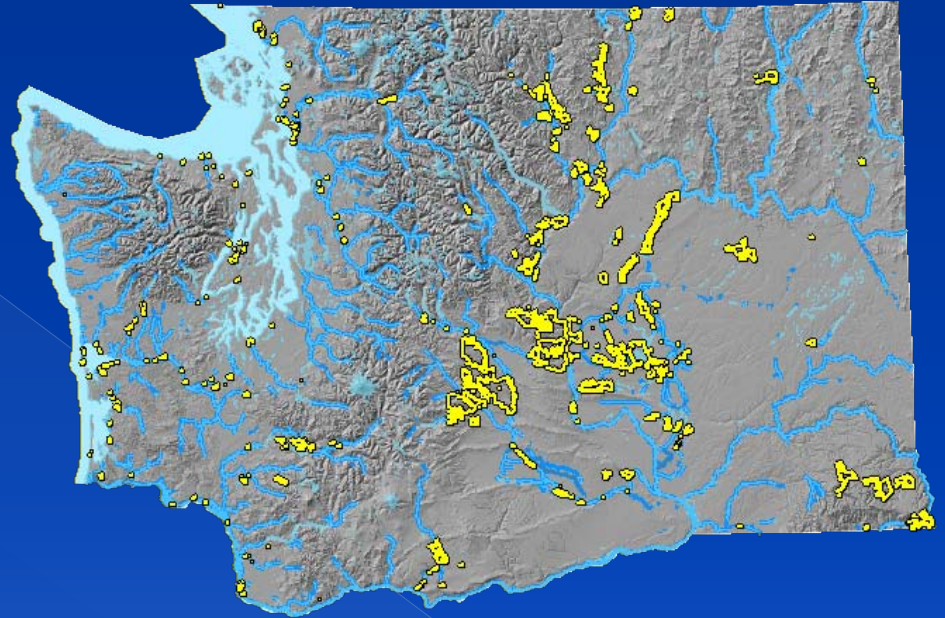
# Started with Sinlahekin in 1939

75<sup>th</sup> Anniversary in 2014



# WDFW Lands

- Wildlife Areas = ~900,000 acres
  - › ~2% of the State
  - › Open 365 days/ year
  - › Four million visitors/ year
- Boat launch/Water Access Sites = 700
  - › Five times that owned by State Parks and DNR combined
  - › The highest number of access sites owned in the nation by a state fish and wildlife agency



# Strengthen common, shared values

**Open Spaces**



**Protection of water**



**Working Lands**



**Rural Economy**

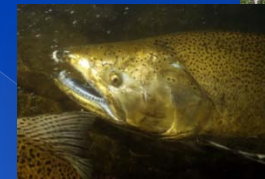
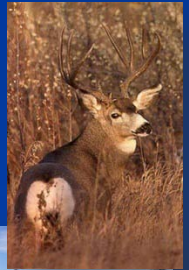


**Outdoor Recreation**



# WDFW Acquisitions

- RCW 77.12.037 - Acquisition, Use and Management of Property
- RCW 77.12.210 – Management and Sale
- RCW 77.12.220 – Acquisition and Transfer of Property



## Agency Policy and Procedure

- Purchasing Lands (POL and PRO 6011)
- Acquiring and disposing of Property (POL 6010)

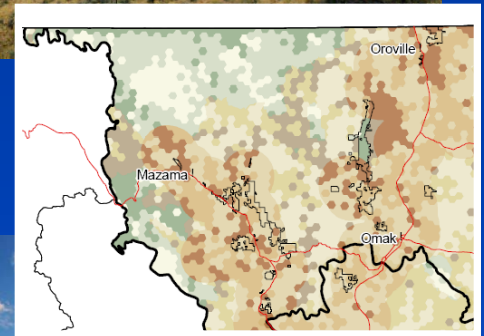
# Lands 20/20 Evaluation

## Internal Review

- Lands EMT Subcommittee
- Technical review – grant compatibility assessment
- Director's Office review

## External Review

- Coordination with local governments, communities and NGO's
- FWC review and comment (web based)
- Public review and comment (web based)





# Conservation Partners

Recreation & Conservation Funding Board

Trust for Public Lands

Local Land Trusts

Conservation Northwest

The Nature Conservancy

Mule Deer Foundation

Duke Foundation

US Fish & Wildlife Service

US Forest Service

DNR

State Parks

BLM

Private landowners.



# LANDS 20/20 PROPOSALS FOR 2012

## Considerations

- Budget Outlook
- Reduced Grant Funding Levels
- Reduced Work Force
- Staff Workloads

### **FILTER 1**

- ⦿ WWRP proposals
  - > Phased project
  - > Previously submitted not funded, and meets criteria in Filter 2 & 3
- ⦿ New or previously unfunded proposal
  - > Meet criteria in Filter 2 & 3

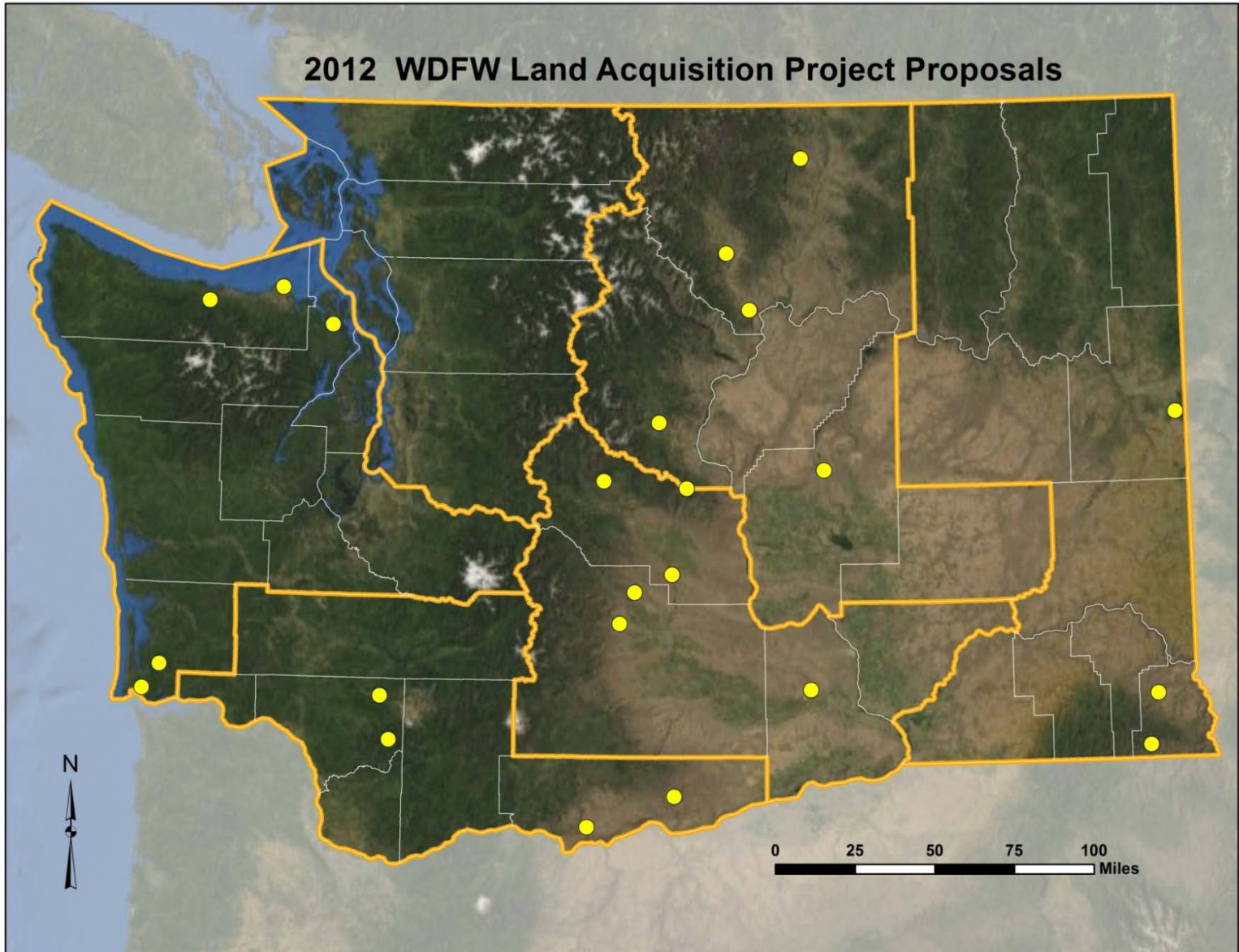
### **FILTER 2**

- ⦿ Species Emphasis
  - > State and/or federally listed species, priority recreational/commercial species
- ⦿ Ecological Systems
  - > Conserve full range of ecological systems
- ⦿ Important Landscapes for Connectivity

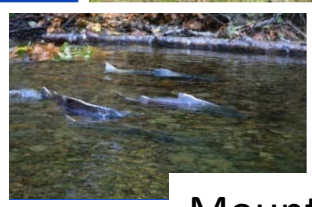
### **FILTER 3**

- ⦿ Species or habitat type is not adequately protected
- ⦿ Acquisition/easements appropriate tool
- ⦿ Land is in relatively good condition
- ⦿ Coordination with local governments

## 2012 WDFW Land Acquisition Project Proposals



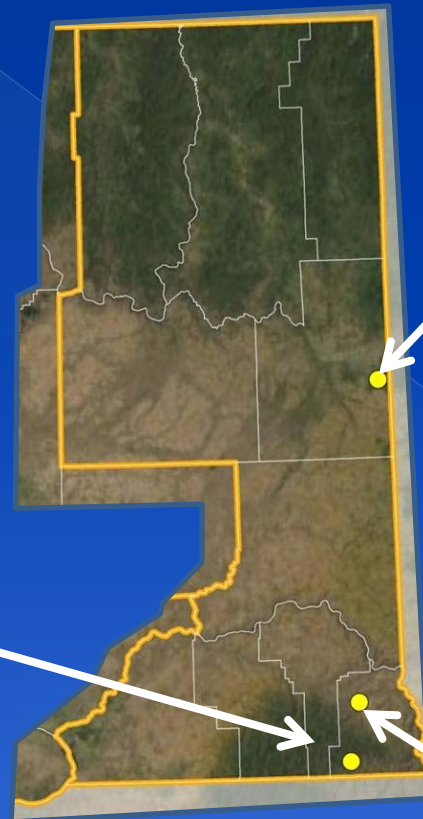
# Region 1



Mountain View



Mica Peak



Charley Fork - Asotin Creek



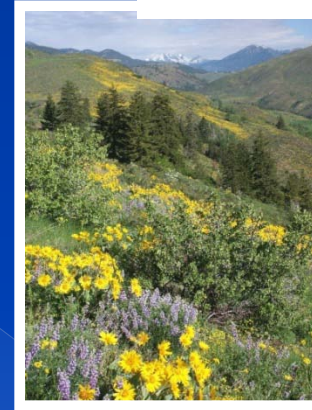
# Region 2



Methow

Okanogan –  
Similkameen

Bridge 1 – Methow  
River Access



Dryden Water Access



Stemilt



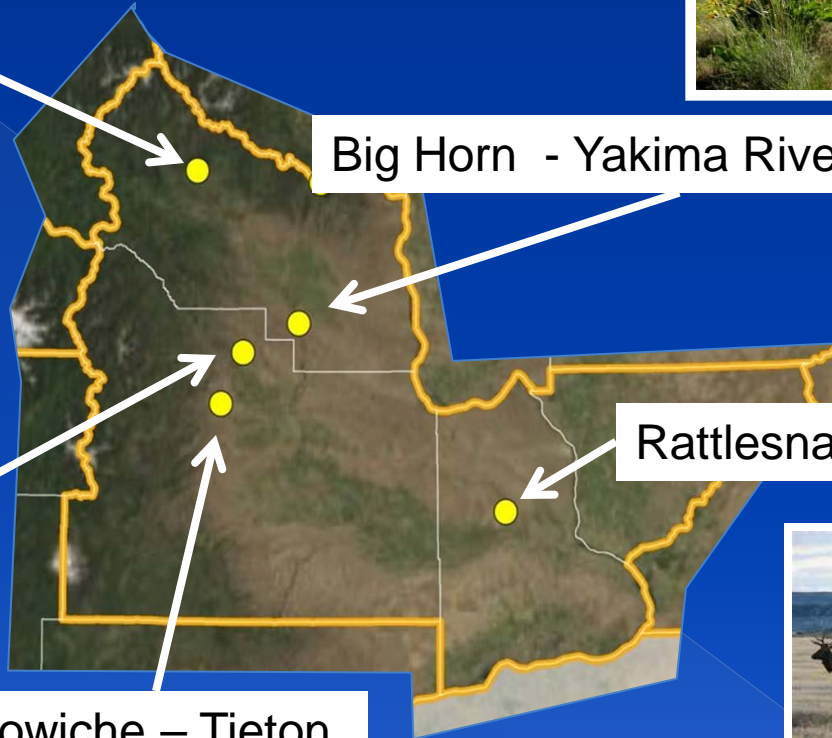
Ephrata Lake

# Region 3

Heart of the Cascade - Teanaway



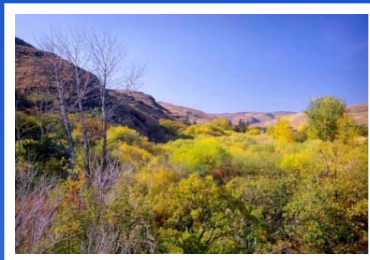
Big Horn - Yakima River Access



Pine Canyon

Rattlesnake Mt

Cowiche - Tieton



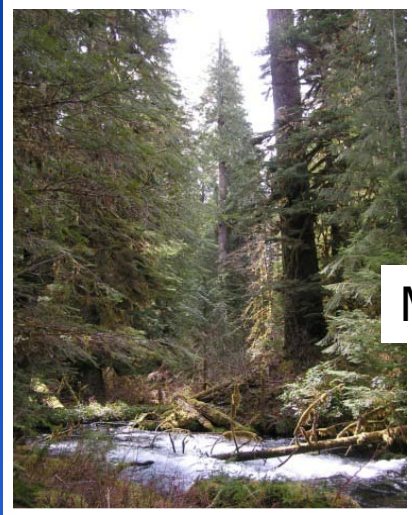
# Region 5



Mt. St. Helens



Rock Creek



Merrill Lake North



Harms Road Trailhead



# Region 6



Aloha



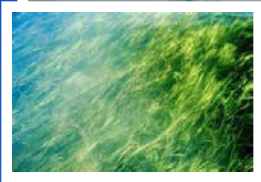
Dungeness Estuary



Willapa Bay



Chimacum Creek



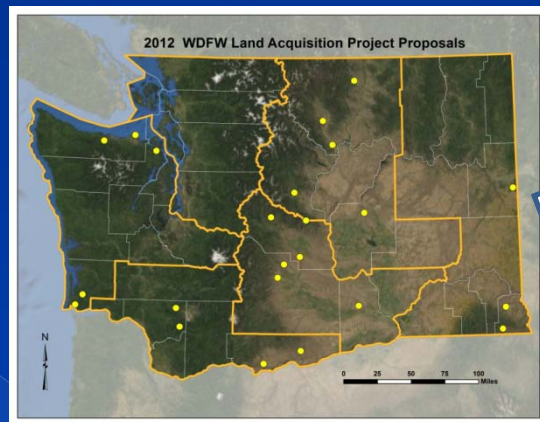
Chinook River



# Next Steps

- **FWC review and comments**
- **Public review and comments**
- **State Land Acquisition Coordination Forum Presentation**
- **Apply for grant and other funding sources**
- **Work with local governments and partners**

# Public Review Website Information



Mica Peak

**PROPOSAL - Mica Peak**  
920 acres

Protects core moose habitat

Conserves diverse habitats: conifer woodland with open meadows, aspen and shrub covered slopes

Expands access for Spokane recreationists

Spokane County

Mica Peak

Agency	Department of Fish and Wildlife
Estimated Acres	920
Estimated Cost	\$2,300,000
Existing Uses	Currently, the land has been used for small scale timber harvest and private recreation (hunting, hiking, wood cutting, etc).
Threats	Development of timber company land would fragment state and county forest land, purchase ensures contiguous 13,700 acres.
Intended Uses	Intend use is for public recreation (hiking, hunting, bird watching, trail riding, etc.). A trail connecting the parcel of interest, the neighboring Department of Natural Resources section, and Liberty Lake County Park has been discussed, but there are no formal plans to date.
Project Description	The Mica Peak property contains a diverse mix of conifer woodland with open meadows, aspen stringers, shrub covered slopes, and the head waters of California and Seltice Creeks. This area provides connectivity between the undeveloped lands (state, county, private) of Mica Peak. This project site is core habitat for the halgman moose population. Species associated with this property include elk, moose, deer, ruffed grouse, mountain lion, songbirds and raptors.

Spokane County

Mica Peak

Mica Peak Parcel

Legend

- Mica\_Peak\_Parcel
- Timber\_Company
- Public\_Lands
- County Conserv. Futures
- WA\_Other

0 0.25 0.5 1 Miles

Spokane County

# Public Review Website Questionnaire

The screenshot shows a web browser window displaying the WDFW Land Acquisition Project Proposal Feedback Survey. The browser's address bar shows the URL: <http://wdfw.wa.gov/lands/acquisitions/feedback.html>. The page header includes the Washington Department of Fish & Wildlife logo and the text "WDFW LANDS". A navigation menu is visible with options: Home, About WDFW, Conservation, Fishing, Hunting, Wildlife Viewing, Licensing & Permits, and Living with Wildlife. The main content area is titled "WDFW Lands" and "Land Acquisition Project Proposals". Below this, there is a "Feedback Survey" section. The survey includes a dropdown menu for selecting a project proposal, a radio button scale for support (1-5), and a list of activities on WDFW lands with checkboxes: Hunt, Fish, Hike, Camp, Watch Wildlife, and Other (e.g., horseback, mountain bike, rock climb, etc.). A text box is provided for describing other activities. The browser's taskbar at the bottom shows several open applications, including Microsoft Office, WDFW Land, and a Start Menu.

A photograph of a dirt path in a forest during autumn. The path is covered with fallen yellow leaves and leads into a misty, foggy forest. The trees have yellow and green foliage. The word "Questions" is written in white with a brown outline in the center of the image.

# Questions