

Agenda Item 5

Landowner Hunting Permits

WAC 232-28-295

Landowner Hunting Permit Program

- Hunter Access Programs & LHP History
- Current Commission Policy
- Summary of Cooperators
- 2012 Proposals

Landowner Hunting Permit Program

- Hunter Access Programs & LHP History
 - Looking to complement existing programs
 - Feel Free to Hunt
 - Hunt by Written Permission
 - Register to Hunt
 - Greater Landowner Flexibility
 - PLWMA program
 - LHP

Landowner Hunting Permit Program

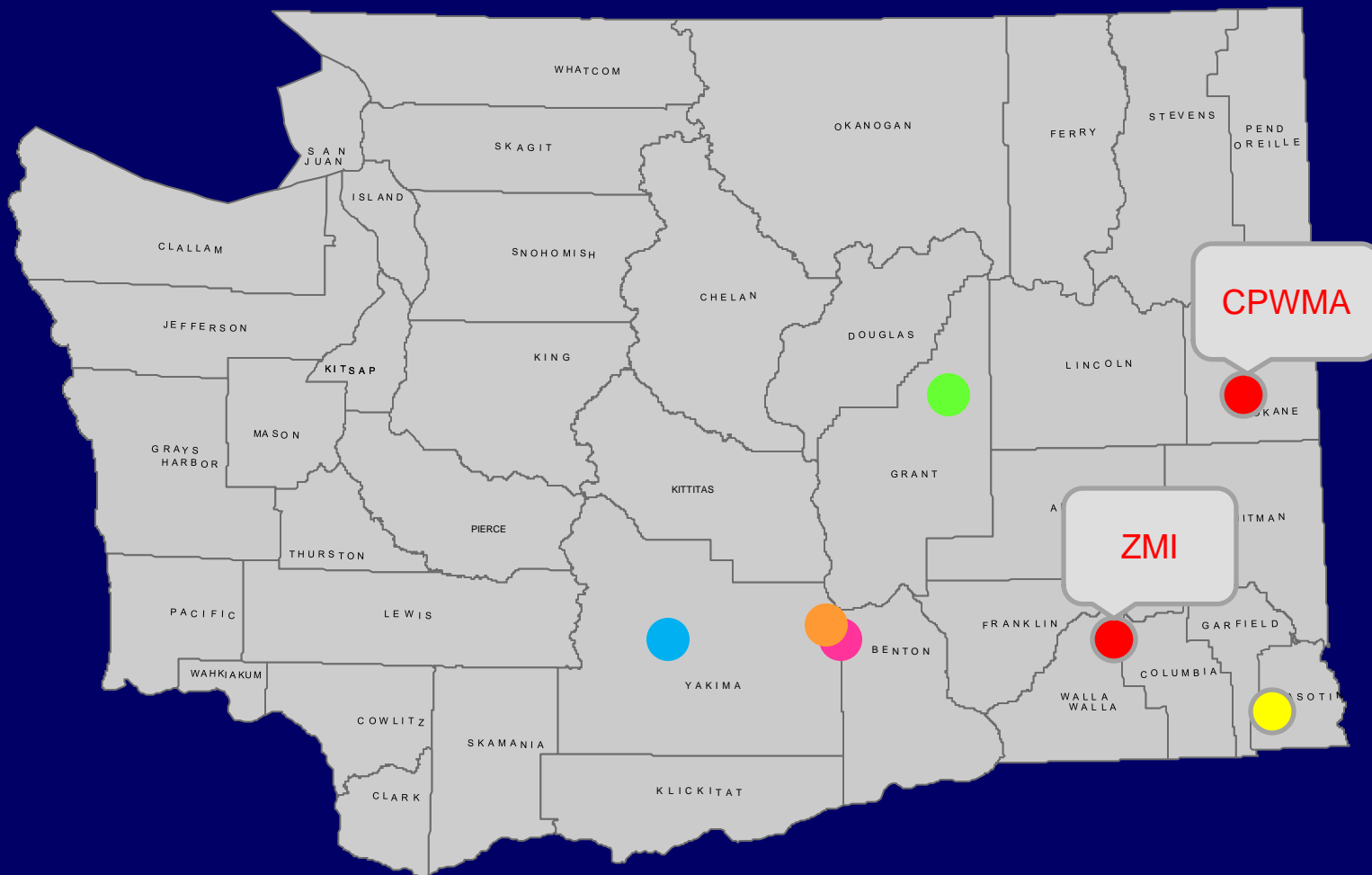
- Current Commission Policy
 - Designed to Expand Access to Private Property
- LHP Guidelines
 - Beneficial/Unique Opportunity
 - Sharing of Hunting Permits
 - Encourage General Season Opportunity

Landowner Hunting Permit Program

- We currently have five cooperators
 - Buck Run
 - Blackrock
 - Silver Dollar
 - Pine Creek
 - 4-O Ranches

Landowner Hunting Permits

2012 Cooperator Locations



WA Dept. of Fish and Wildlife,
Information subject to changes and
amendments over time

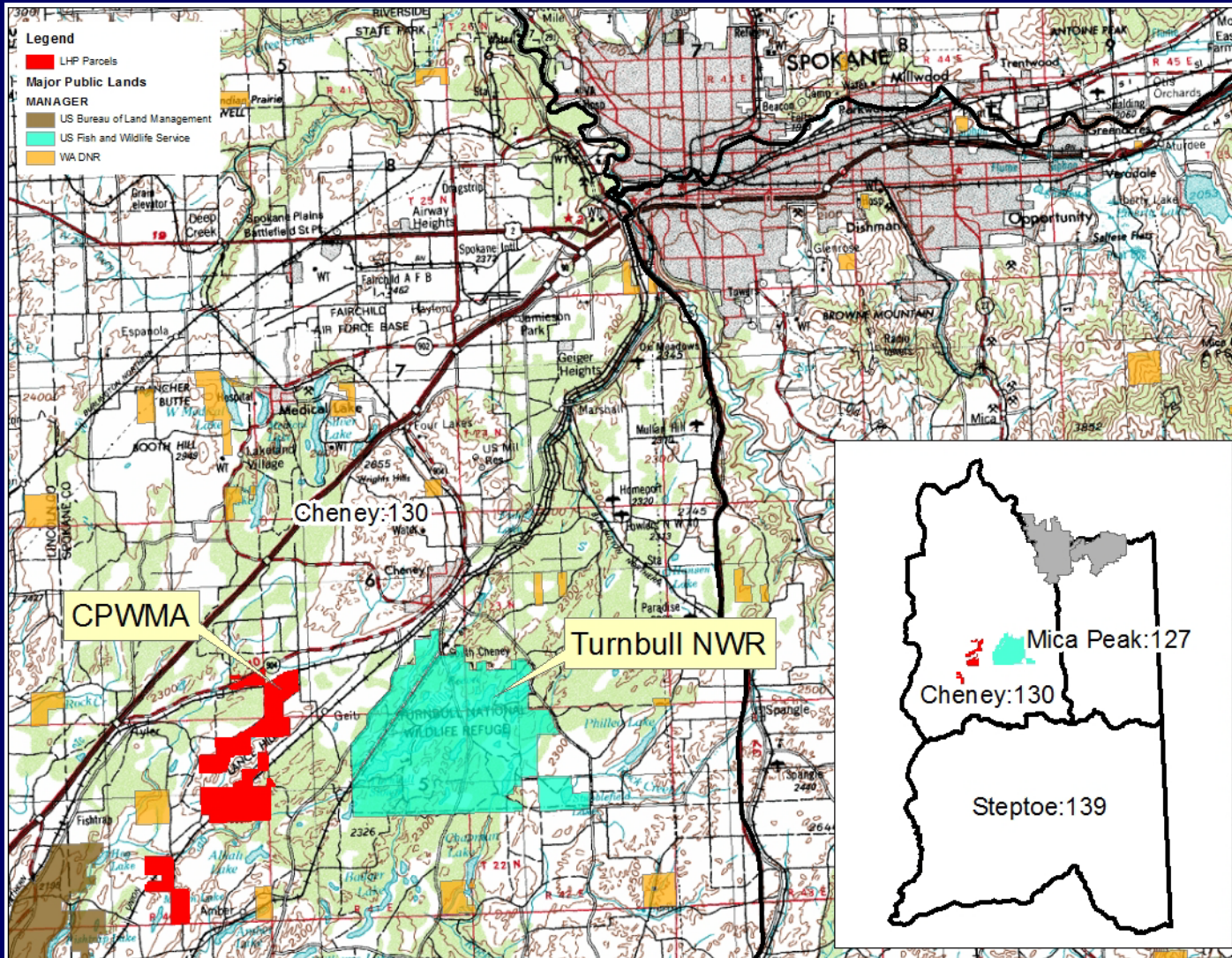
Commission Presentation March 9, 2012

Landowner Hunting Permit Program

2012 Proposals

- Columbia Plateau Wildlife Management Association – Spokane County
- ZMI – Walla Walla County

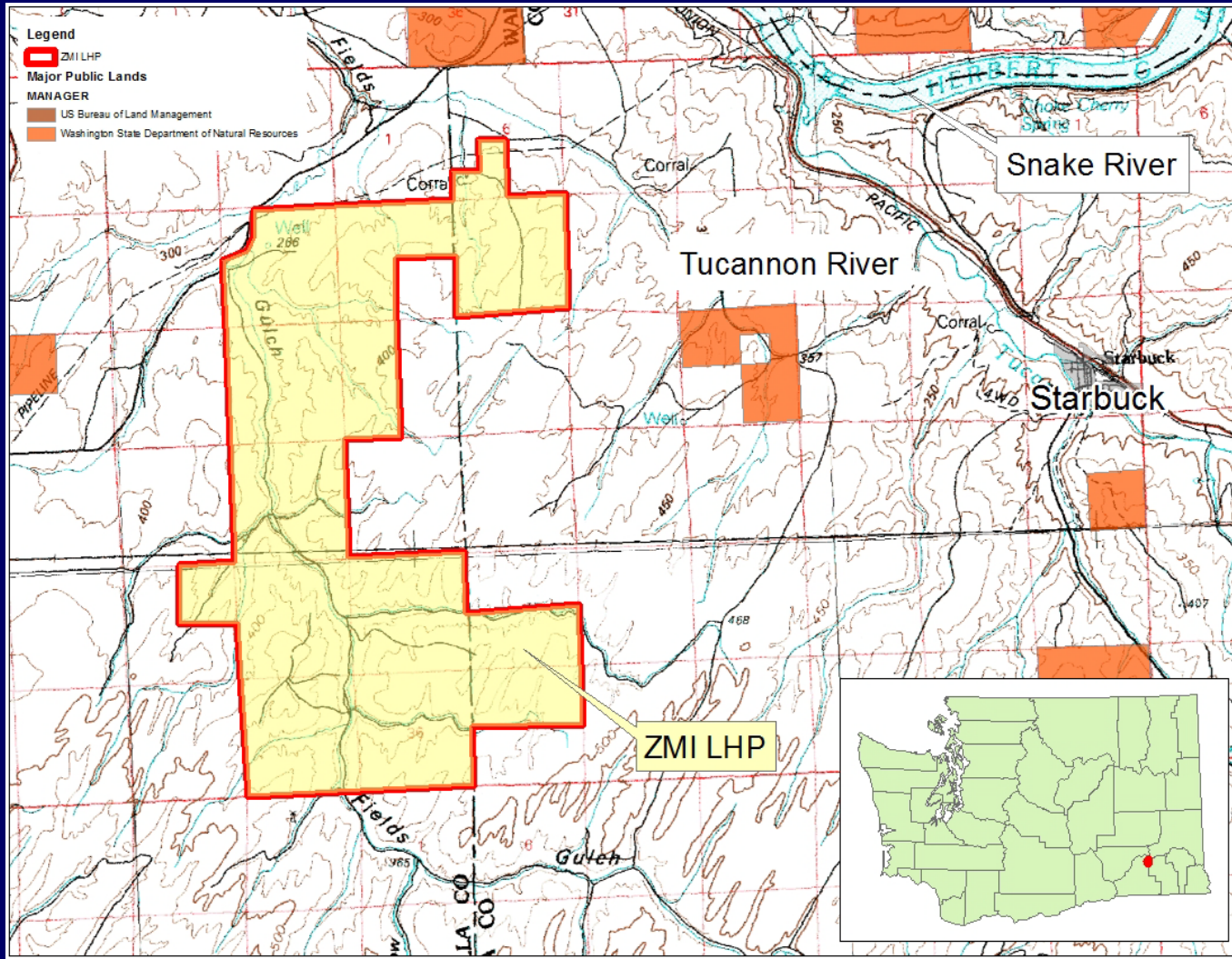
CPWMA



WA Dept. of Fish and Wildlife,
Information subject to changes and
amendments over time

Commission Presentation March 9, 2012

ZMI



WA Dept. of Fish and Wildlife,
Information subject to changes and
amendments over time

Commission Presentation March 9, 2012

Landowner Hunting Permit Program

- Recommendation:
 - Add CPWMA and ZMI as LHPs

Questions ?

