

Agenda Item 9

Deer and Elk Area Boundaries

WAC 232-28-337

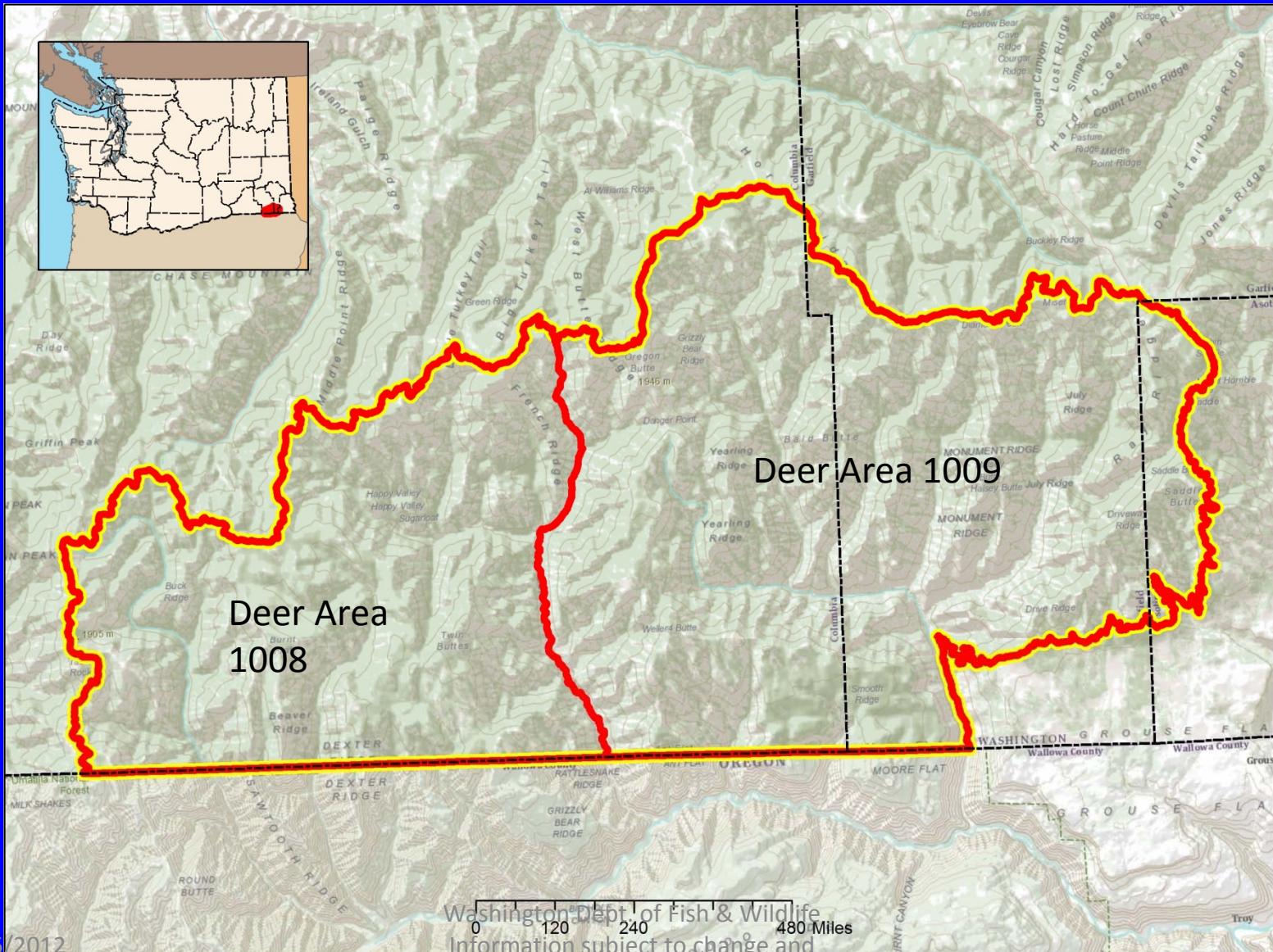
Briefing and Hearing

Deer Areas

- **Propose adding two new Deer Areas.**
- **Separates GMU 169 Wenaha into east and west areas.**
- **Helps distribute hunters and allows doubling of permits.**

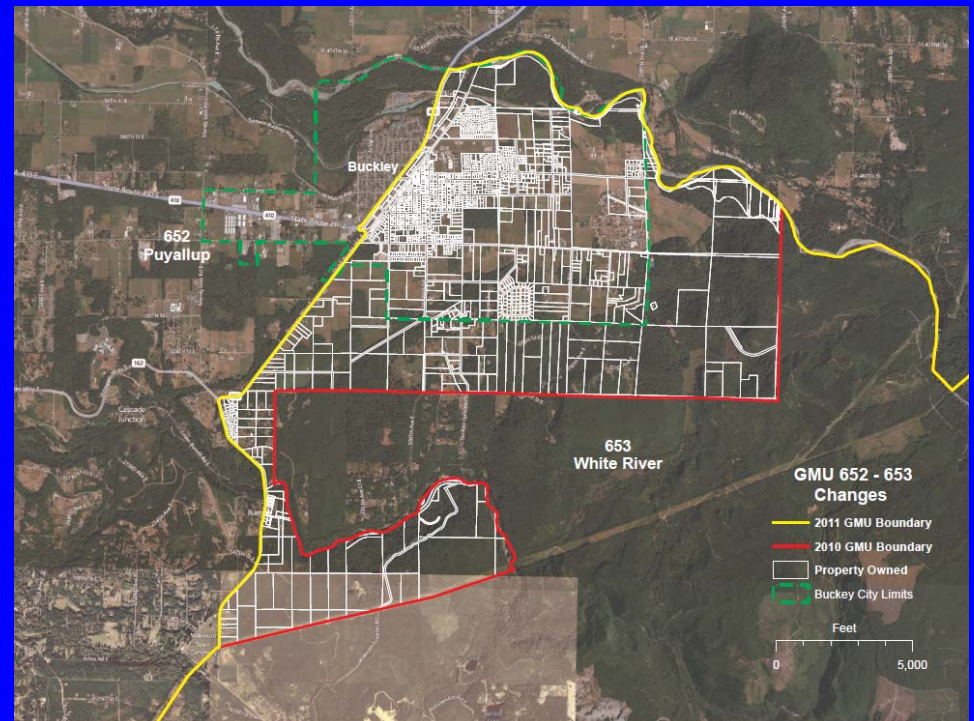
Deer Area 1008 West Wenaha

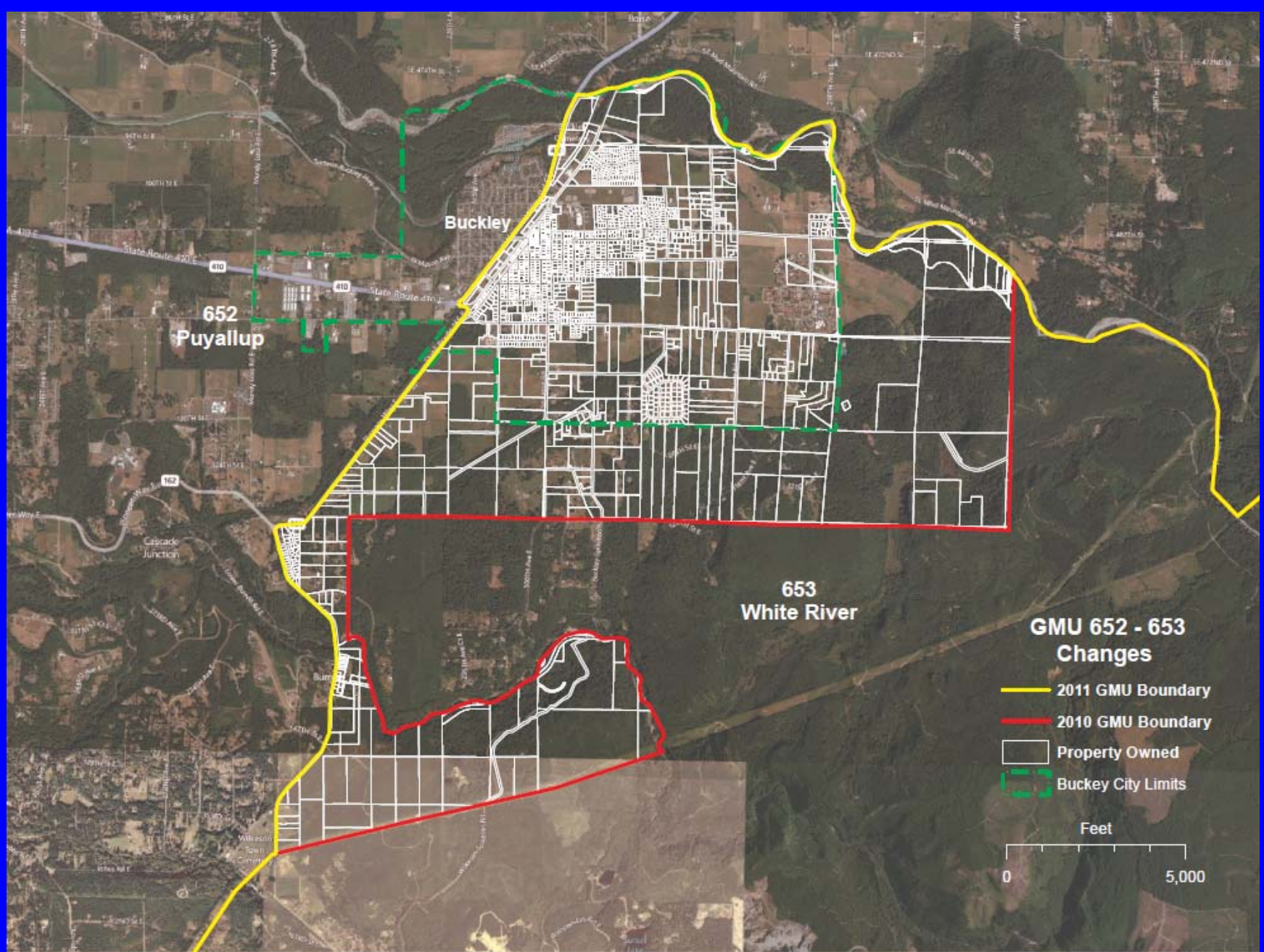
Deer Area 1009 East Wenaha



Game Management Unit 653

The primary reason for change was to create a discernable, enforceable boundary; and address trespass issues.





GMU 653 continued

- **Original boundary was hard to identify and hard to enforce.**
- **The 2011 boundary change has created an identifiable, enforceable boundary.**
- **The power line boundary option presented by petitioners is an identifiable boundary, but WDFW Enforcement expressed serious concerns about enforcing rules as access would be extremely limited.**

GMU 653 continued

- The original boundary held all of Hancock Timber Resource Group (Hancock) in GMU 653, and the 2011 change retained that ownership in GMU 653.
- The power line boundary option would cut through Hancock, creating more land management problems for the landowner and enforcement entities called to address trespass issues (e.g., WDFW or Pierce County Sheriff).
- Hancock supports the 2011 GMU boundary change and has contacted WDFW with concerns that a change to the power line would increase trespass violations on their property.
- WDFW Enforcement reports calls about trespass violations in the area of concern have decreased dramatically since the 2011 boundary change.

Questions