

Agenda Item 11

**2012 – 2014 Elk General Seasons
and**

2012 Elk Special Permits

WAC 232-28-358

WAC 232-28-360

Briefing and Hearing

Public Comment

- **The number 1 public comment for elk was the timing of early archery elk season.**
- **Early archery begins the Tuesday after Labor Day and runs 13 days closing on a Sunday.**
- **Concerns expressed include:**
 - **Timing of the elk breeding season (rut)**
 - **Warm weather**
 - **Fire danger**
 - **Not enough days**

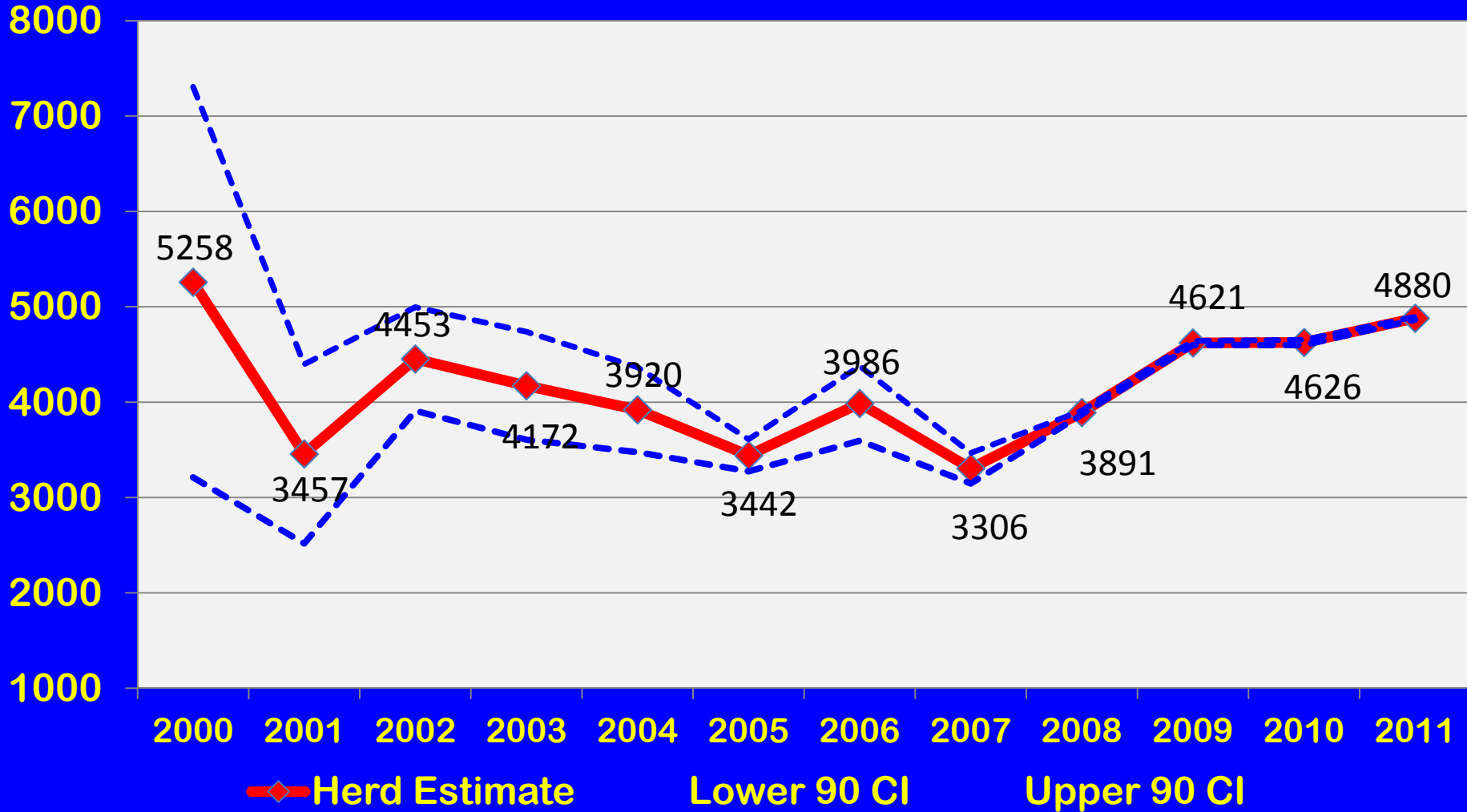
Public Comment

- **Early archery change was motivated by a disproportionate number of larger bulls being harvested during archery season.**
- **The current early archery season allows room for “Quality” modern firearm special permits and early muzzleloader deer seasons without having an overlap between weapon types.**
- **No recommendation to change early archery elk general season at this time.**

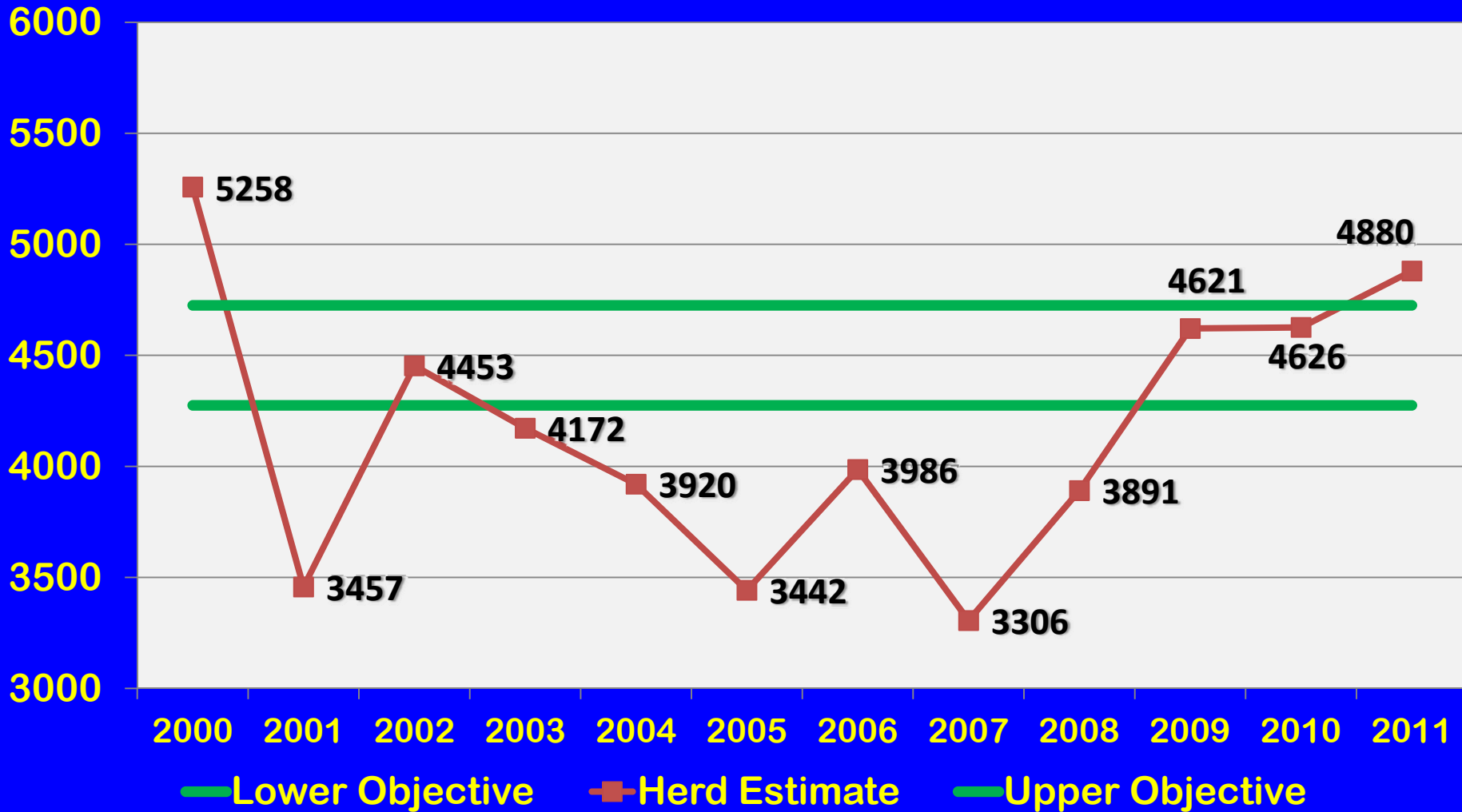
Status of Elk Populations

| Elk Herd | Status | Hunting Season Change |
|------------------|----------------------|--|
| Mount St. Helens | Above Objective | Status Quo Antlerless Bull Permits Reduced to 2010 Levels |
| Yakima | At Objective | Increased Bull Permits Increased Antlerless Permits |
| Colockum | At Objective | Increased Bull Permits Increased Antlerless Permits |
| Blue Mountains | At Objective | Increased Bull Permits |
| Olympic | Working on Estimates | Status Quo |
| Willapa Hills | Harvest Data | Status Quo |
| Nooksack | Below Objective | Pending Flights |
| Selkirk | Harvest Data | Shift From Any Elk to Any Bull |
| North Rainier | Harvest Data | Status Quo |
| South Rainier | Harvest Data | Status Quo |

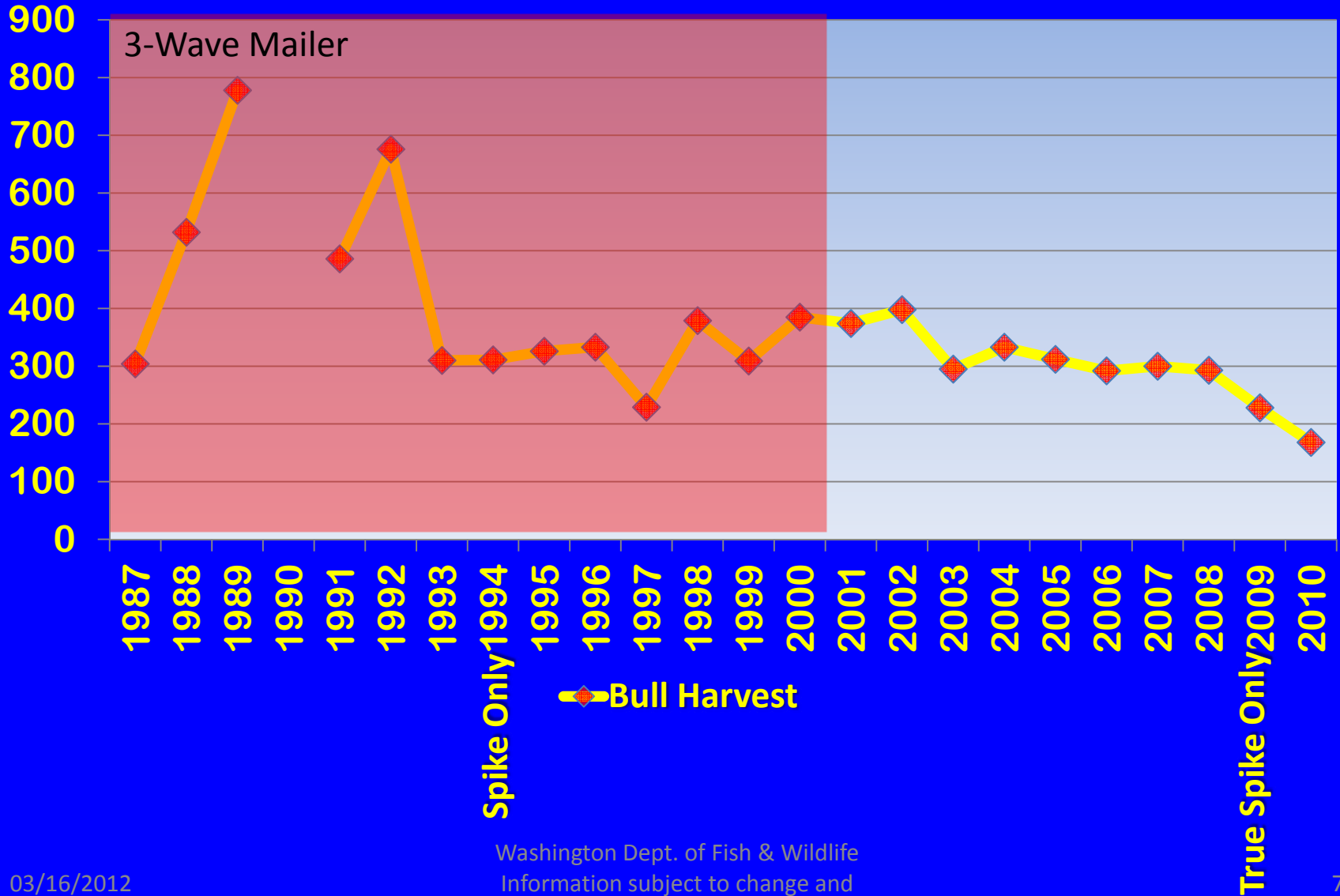
Colockum Herd Size



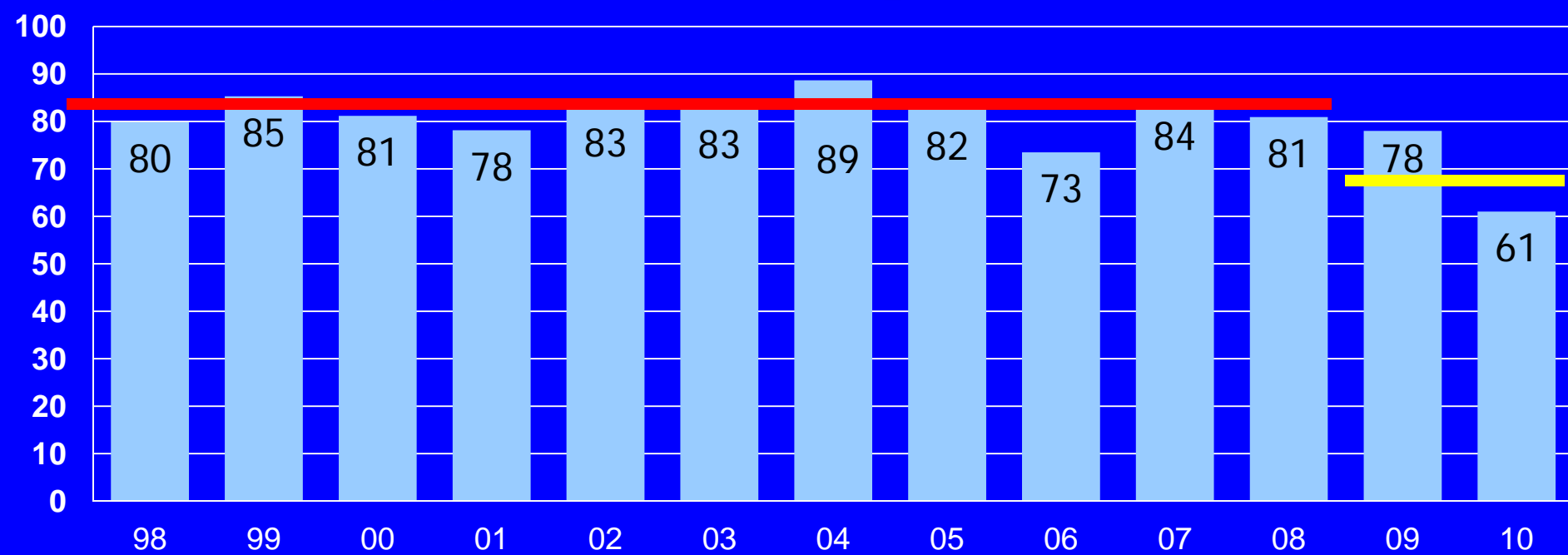
Colockum Herd Size



Colockum General Season Bull Harvest



Percentage of Yearling Bulls Harvested



% of yg bulls harvested under SOM

- Colockum ~82%
- Yakima ~70%
- Blue Mtns. ~60%



Increased Opportunity

- **Colockum special permits for bulls**
 - Slight increase
- **Antlerless opportunity for Colockum**
 - General season
 - Special permit

Increased Opportunity

- **Blue Mountains special permits for bulls.**
- **Yakima special permits for bulls.**
- **Increased antlerless special permits in some of the Yakima units.**
- **Potential increase in bull permits for Nooksack.**

Selkirk Elk

- **Recommend changing GMUs 101, 105, 108, 121, and 204 from “any elk” to “any bull” seasons.**
- **Intention is to promote growth in the elk population and create more elk hunting opportunity in the future.**

Floor Amendments

Page 38

Master Hunter Category

| | | | | | | |
|-------------|------------------------------------|------------------|--------------------------------------|------------|------------------------------------|--|
| Region 3 | Any elk tag/2 nd tag | Master Hunter | Aug. 1, 2012- Mar. 31, 2013 | Antlerless | Designated Areas in Region 3 | 20^{HC} <u>75^{HC}</u> |
|-------------|------------------------------------|------------------|--------------------------------------|------------|------------------------------------|--|

Questions