

Agenda Item 17

WAC 232-28-297

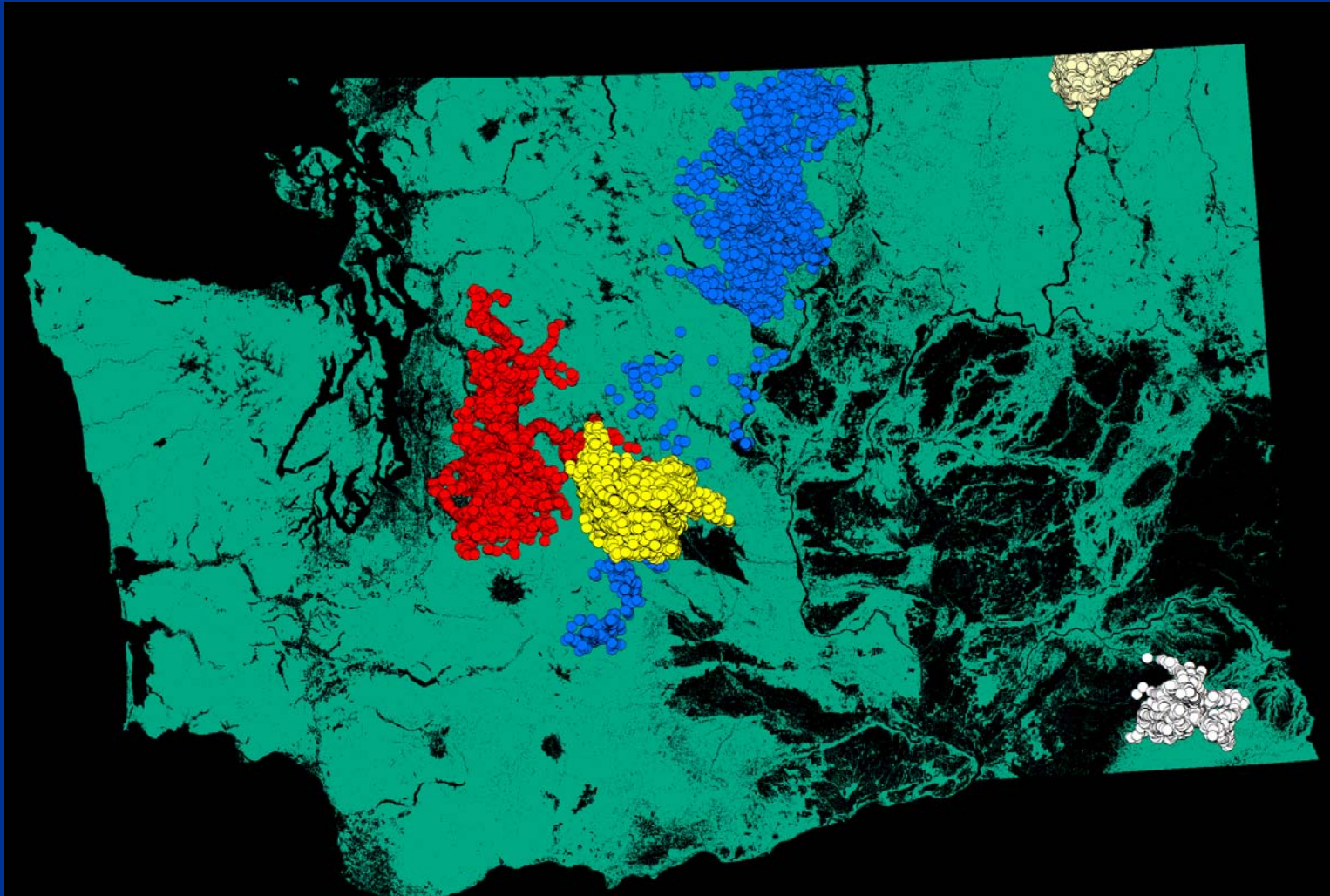
Cougar Hunting Seasons and Regulations

&

WAC 232-12-243

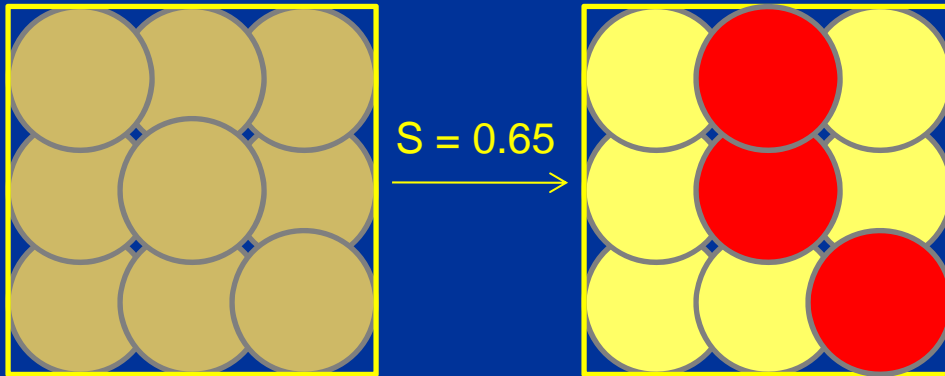
Public Safety Cougar Removals

Scientific Process

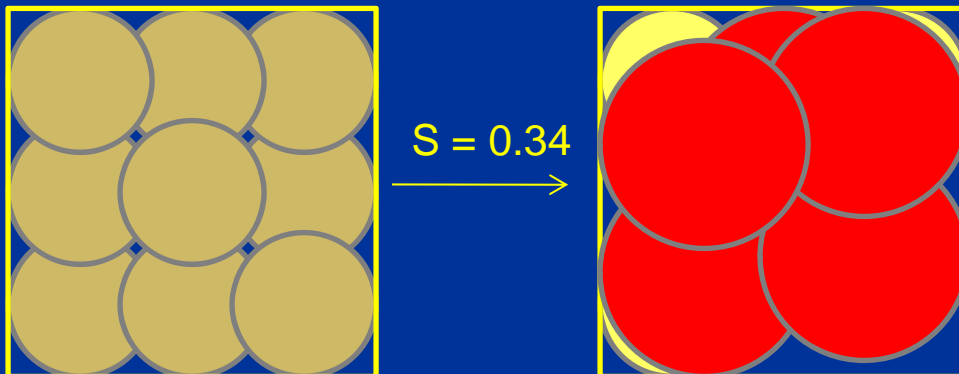


Male Social Organization

Light hunting (Cle Elum)



Heavy hunting (Wedge)



Information is subject to changes and amendments over time

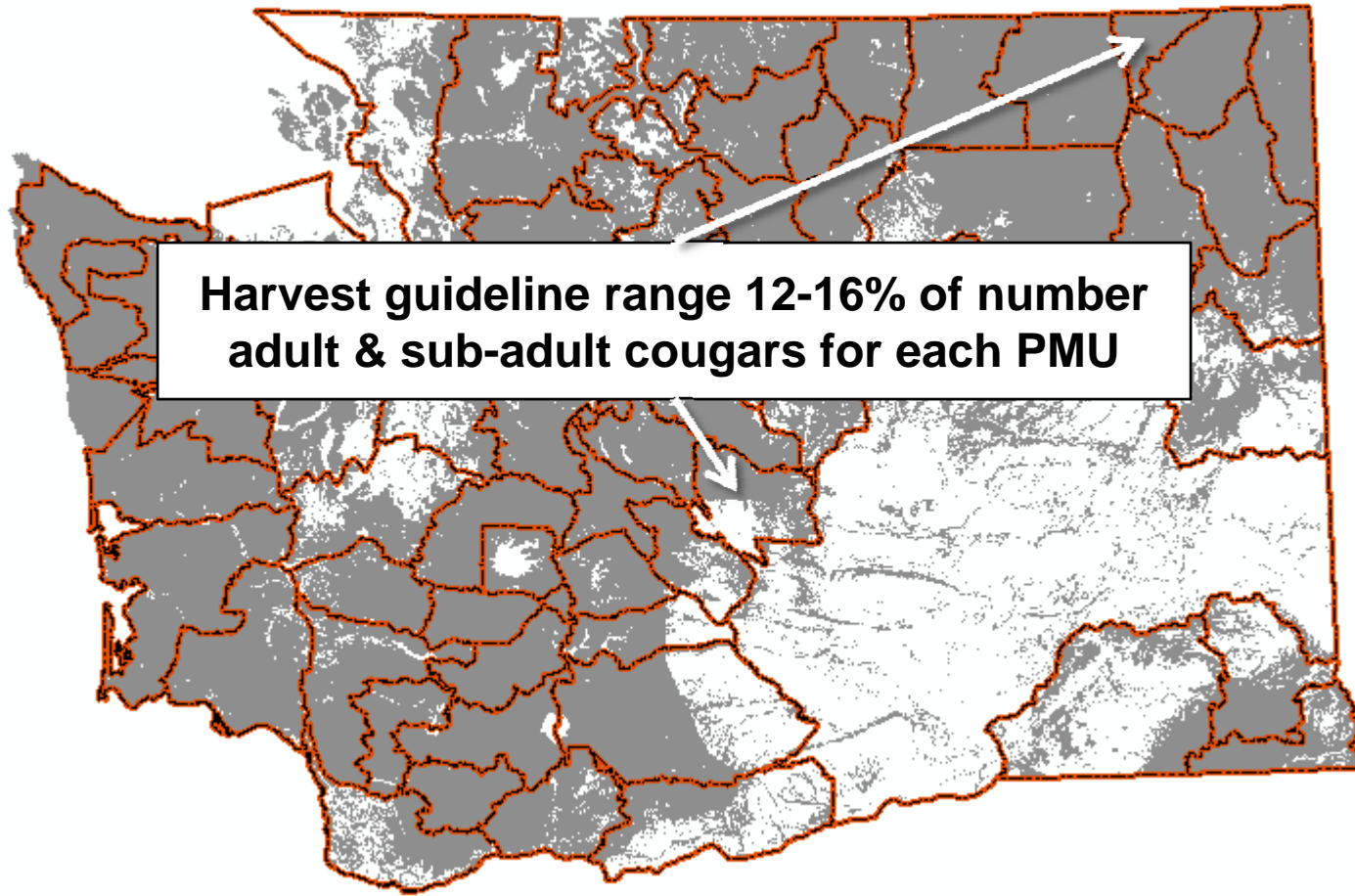
April 14, 2012 WDFW
Commission meeting presentation

Morrison, D. E., R. B. Wielgus, G. M. Koehler, H. C. Cooley, and B. Maletzke. 2012. Effects of trophy hunting on female cougar (*Puma concolor*) population growth and persistence.

Parameter	Lightly Hunted (Cle Elum)	Heavy Hunted (Wedge)
Female age classes	0-12 year olds	0-12 year olds
Litter size	2.47 (0.83)	2.63 (0.80)
Female fecundity	0.46 (0.27)	0.38 (0.25)
Kitten female survival	0.58 (0.06)	0.31 (0.09)
Yearling female survival	0.62 (0.06)	0.62 (0.09)
Adult female survival	0.87 (0.06)	0.66 (0.09)
Age of first reproduction	24 months	24 months
Initial female abundance	21	25

Harvest Guideline

By PMU



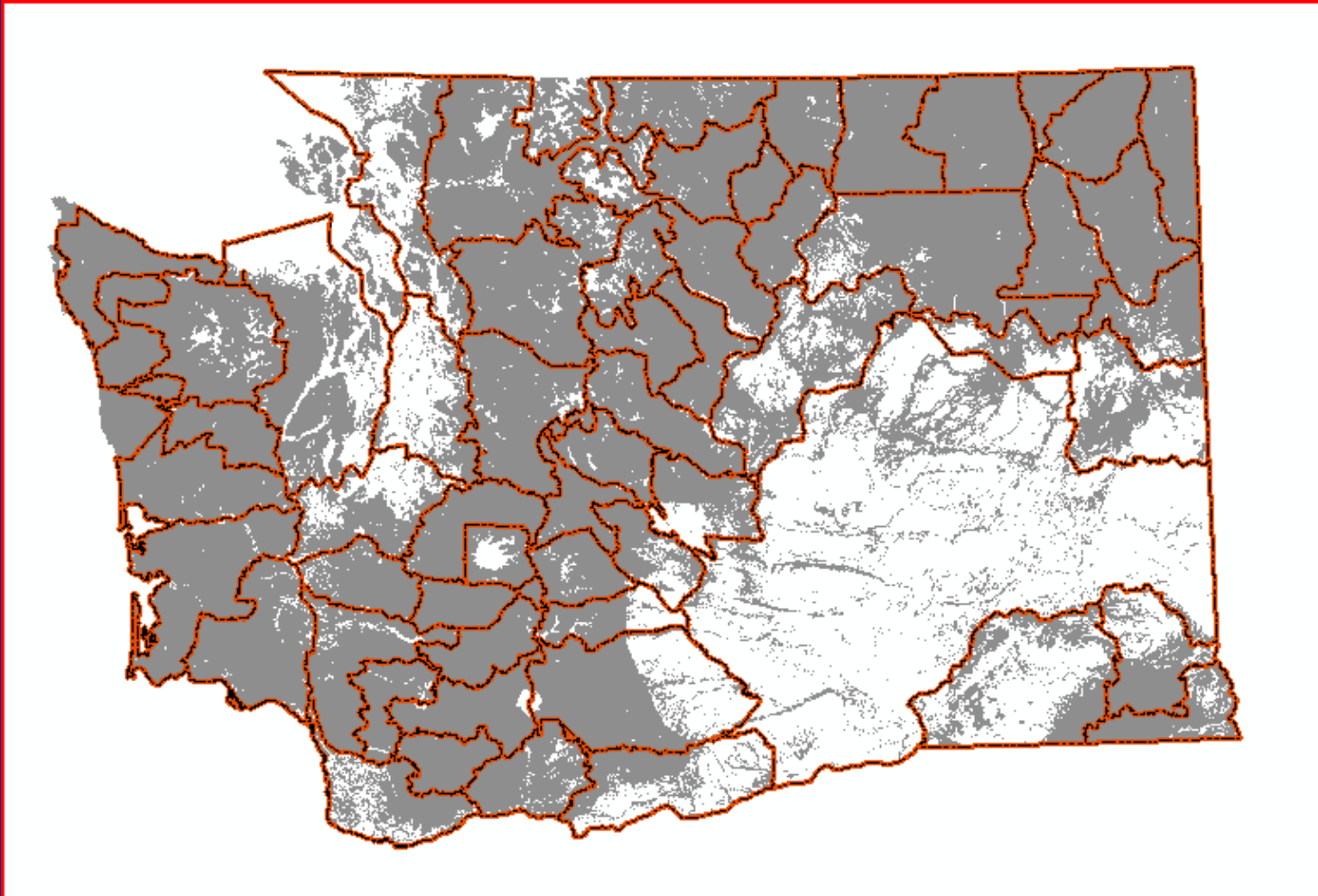
Male (≥ 24 mo) = 0.65 / 100 km²
Female (≥ 24 mo) = 1.17 / 100 km²
Sub-adults (18-23mo) = 24% of adult density

Male (≥ 24 mo) = 0.23 / 100 km²
Female (≥ 24 mo) = 1.35 / 100 km²
Sub-adults (18-23mo) = 24% of adult density

Male (≥ 24 mo) = 0.80 / 100 km²
Female (≥ 24 mo) = 1.07 / 100 km²
Sub-adults (18-23mo) = 24% of adult density

Defining Management Unit Scale

Cougar PMUs



Information is subject to changes
and amendments over time

April 14, 2012 WDFW
Commission meeting presentation

Statewide Recommendation

- Early season Sept 1 – Dec 31
- Late season Jan 1 – Mar 31
- Any legal weapon in both seasons
- Each hunt area (PMU) has a harvest guideline corresponding to 12-16% of cougar population (excluding kittens)
- Starting Jan 1, the Director may close hunt areas that meet or exceed the harvest guideline

Questions