



Washington Department of Fish and Wildlife

Capital & Asset Management Program Overview

Bill Phillips | Assistant Director

Program Overview

- CAMP's Role in the Agency
- Services we deliver
- How we're organized
- Our budget
- Accomplishments

CAMP's Role in the Agency

Support the Programs with design, expertise and physical resources with a focus on:

- Conserving, protecting, and restoring natural areas while supporting sustainable land and water use.
- Providing sustainable fishing, hunting, recreating opportunities.
- Protecting the quality of life and economic vitality of the citizens of our state.

Project Management

- Managing Consultants and Contracts
- Budgeting
- Scope Development
- Scheduling
- Planning

Engineering and Design

- Fish Hatcheries
- Wildlife Area Roads and Structures
- Dams and Dikes
- Access Sites
- Restoration Projects
- Cooperative Projects
- Water Control Structures

Maintenance & Construction Services

- Maintenance Services
- Construction Services
- Irrigation and Screening
- Fish Hauling

Facility Management

- NRB Issues
- Facility Leasing
- Consolidation Coordination

Asset Management

- Condition Assessment
- Budget Development
- Capital Planning
- Maintenance Planning

Other Services

- Permitting
Support of all physical improvements under the control of CAMP
- Surveying
Support for engineering and land management activities
- Fleet Management
Currently supporting the DES transition

Program Organization

- 80 staff of Engineers, Project Managers, Engineering Aides, Construction Professionals, Biologists, Surveyors, and Administrative Staff
- Located in:
 - Olympia
 - Yakima
 - Lacey

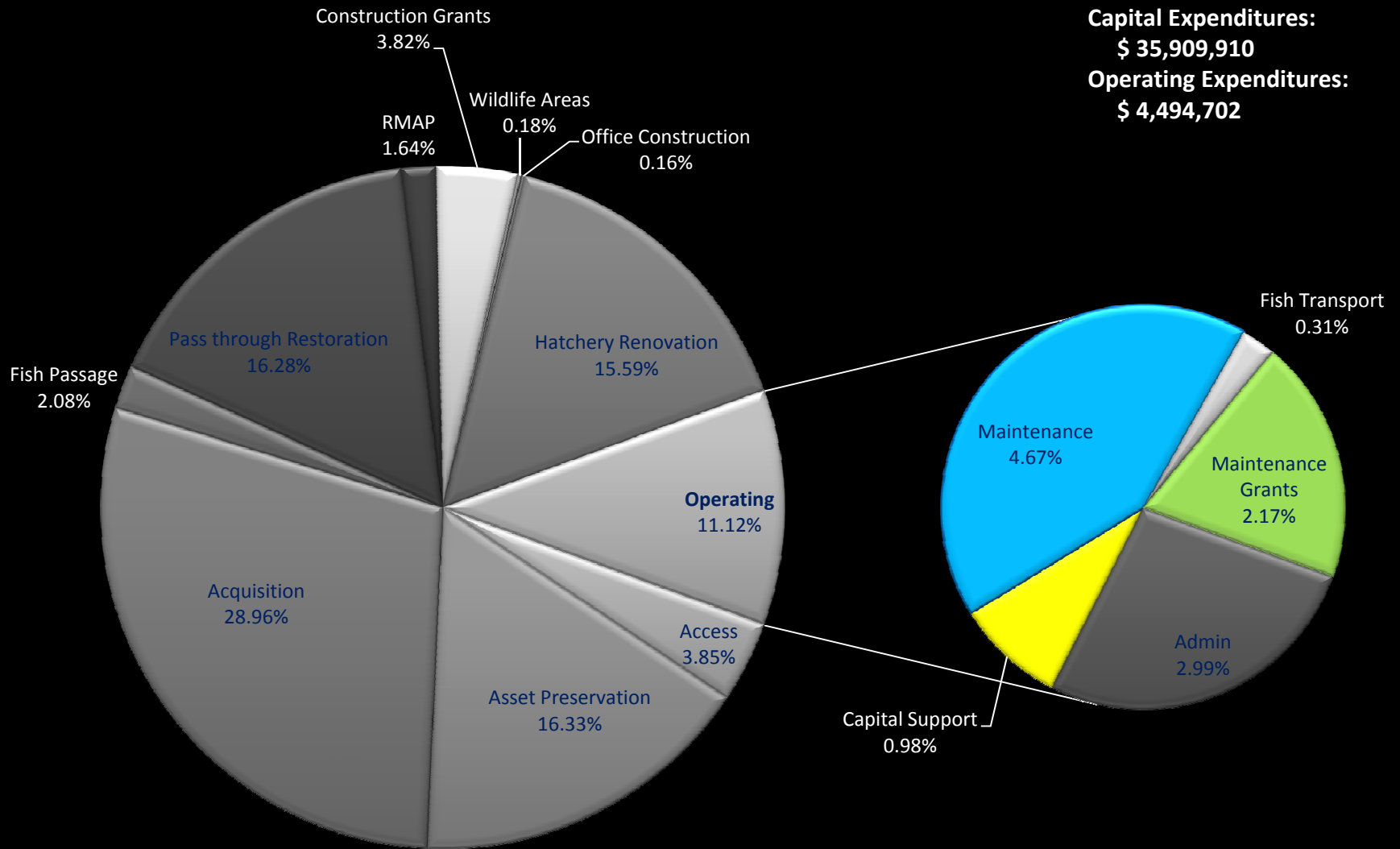
Improving the Organization

- Project Management
- Design
- Design Production
- Permitting
- Facility Management
- Two Maintenance and Construction Shops
- Survey
- Fleet Management

A New Direction

- Established as a Program
- Rebuilt the Capital Process
- Improvements to budgeting and accounting
- Control of assets
- Customer focus
- Collaboration
- Efficiency
- Provider of choice

CAMP Budget 2009-2011



Information is subject to changes and amendments over time.

Keach Jensen Screen Site



Information is subject to changes and amendments over time.

April 13, 2012, CAMP Overview
Briefing to the Fish and Wildlife Commission

KCCCD Barnes Road Screen



Information is subject to changes and amendments over time.

April 13, 2012, CAMP Overview
Briefing to the Fish and Wildlife Commission

Manastash Screen Site



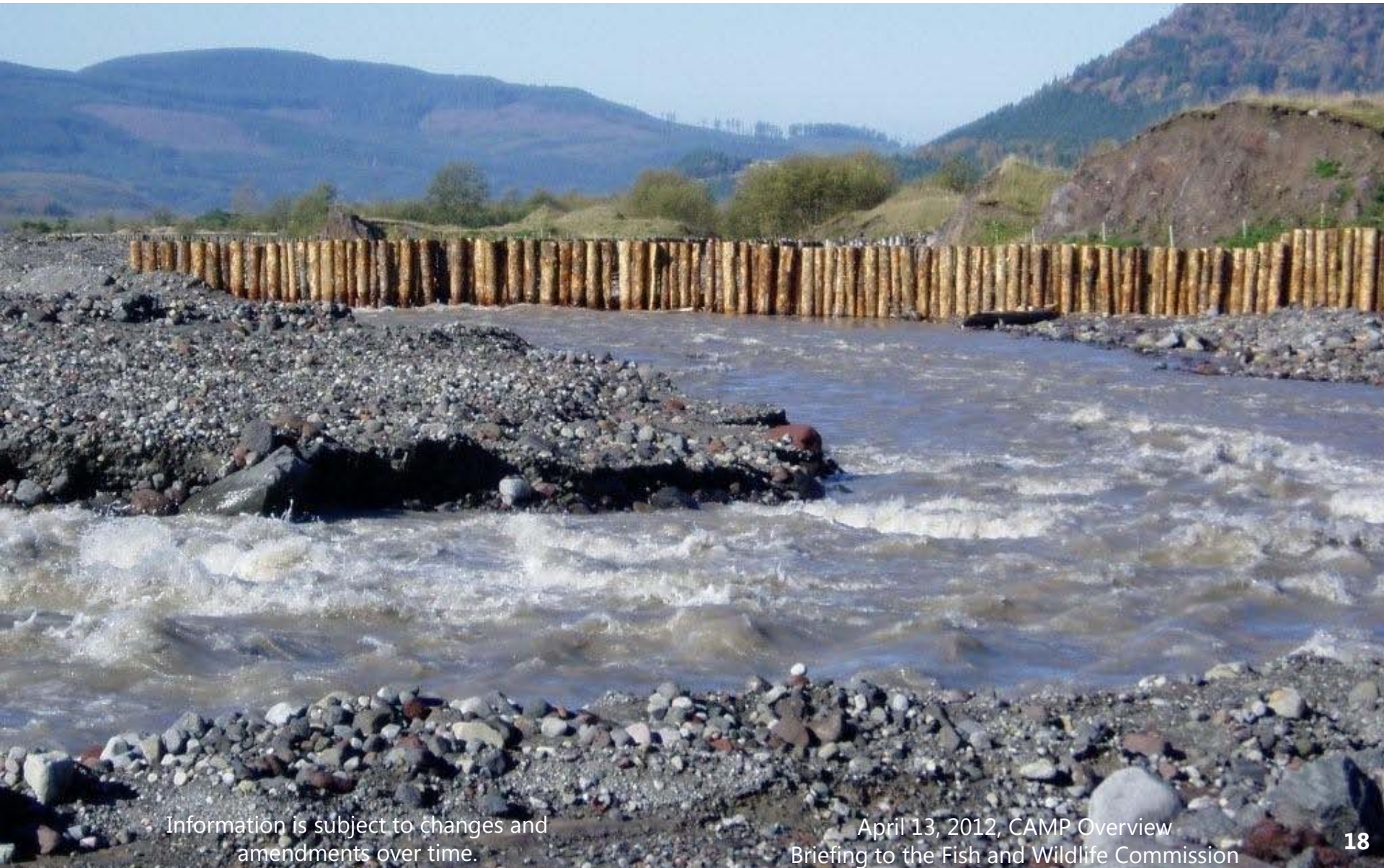
Cub Creek Culvert



Information is subject to changes and amendments over time.

April 13, 2012, CAMP Overview
Briefing to the Fish and Wildlife Commission

Mt St Helens Wildlife Area



Information is subject to changes and amendments over time.

April 13, 2012, CAMP Overview
Briefing to the Fish and Wildlife Commission

Audubon Lake Viewing Blind



Information is subject to changes and amendments over time.

April 13, 2012, CAMP Overview
Briefing to the Fish and Wildlife Commission

Spokane Laboratory Building



Information is subject to changes and amendments over time.

April 13, 2012, CAMP Overview
Briefing to the Fish and Wildlife Commission

Eloika Lake Access



Information is subject to changes and amendments over time.

April 13, 2012, CAMP Overview
Briefing to the Fish and Wildlife Commission

Mile Post 8 Access



Newman Lake Access



Information is subject to changes and amendments over time.

April 13, 2012, CAMP Overview
Briefing to the Fish and Wildlife Commission

Silver Lake Access



Information is subject to changes and amendments over time.

April 18, 2012; CAMP Overview
Briefing to the Fish and Wildlife Commission

Whatcom Lake Fishing Pier



Information is subject to changes and amendments over time.



April 13, 2012, CAMP Overview
Briefing to the Fish and Wildlife Commission

Soos Creek Hatchery Generator



Information is subject to changes and amendments over time.

April 13, 2012, CAMP Overview
Briefing to the Fish and Wildlife Commission

George Adams Hatchery PA Pond



Information is subject to changes and amendments over time.

April 13, 2012, CAMP Overview
Briefing to the Fish and Wildlife Commission

Hurd Creek Hatchery Ponds



Information is subject to changes and amendments over time.

April 13, 2012, CAMP Overview
Briefing to the Fish and Wildlife Commission

Morse Creek Acclimation Ponds



Information is subject to changes and amendments over time.

April 13, 2012, CAMP Overview
Briefing to the Fish and Wildlife Commission

Washougal Hatchery Rearing Pond



Information is subject to changes and amendments over time.

April 13, 2012, CAMP Overview
Briefing to the Fish and Wildlife Commission

Skookumchuck Hatchery Adult Ponds



Information is subject to changes and amendments over time.

April 13, 2012, CAMP Overview
Briefing to the Fish and Wildlife Commission



Questions?