

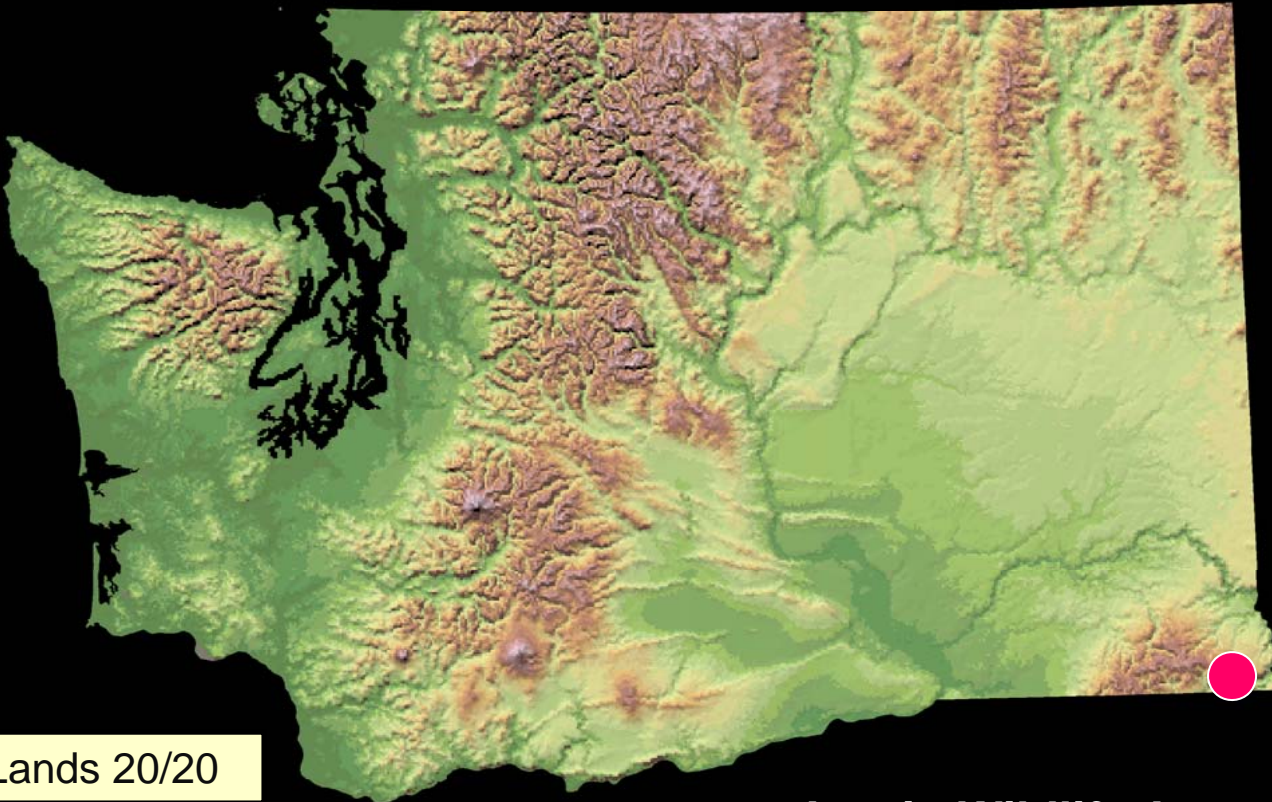


# Land Transactions

April 13 & 14, 2012

# Koch Property Asotin County

## Project Location



WDFW Lands 20/20

Asotin Wildlife Area

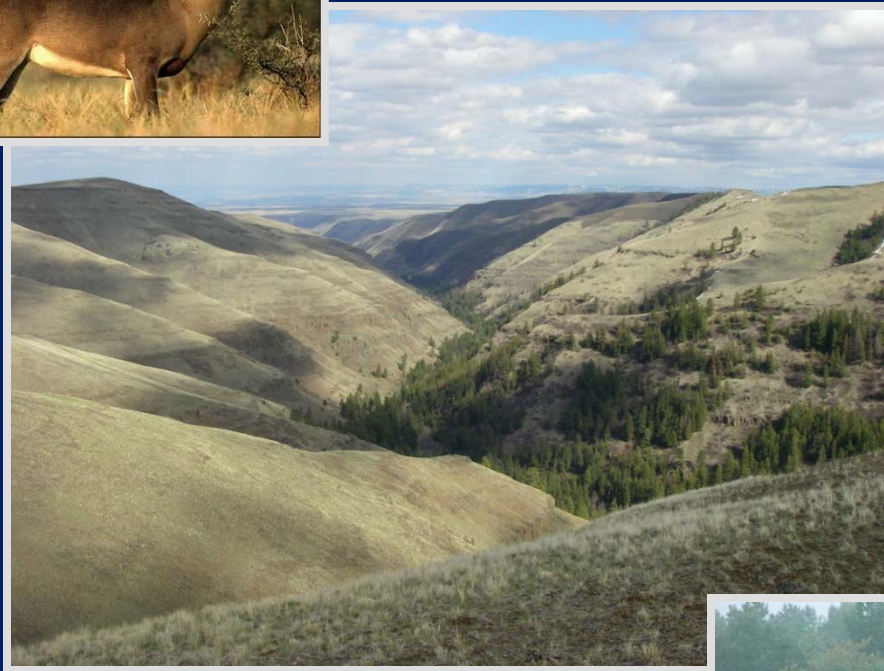


# Koch Property Asotin County



- Supports Asotin Creek Model Watershed Plan
- Snake Region Salmon Recovery Plan
  - Chinook salmon
  - bull trout
- Wild steelhead refuge
- Intensively Monitored Watershed

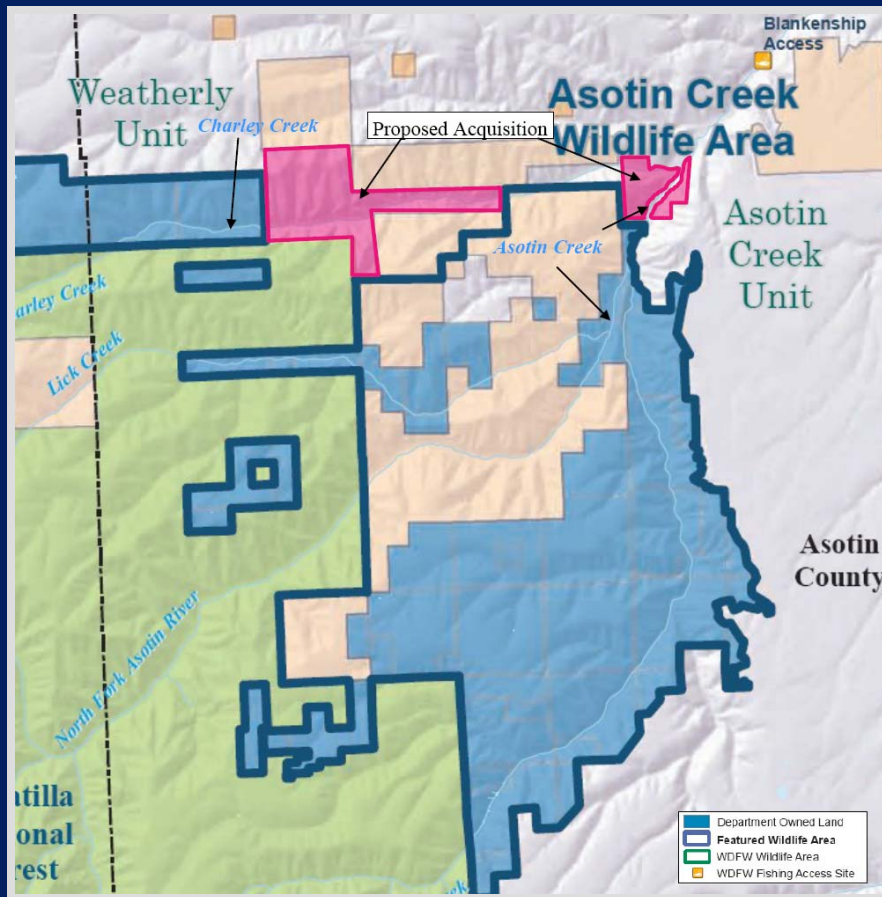
# Koch Property Asotin County



- Blue Mountain steppe vegetation
- Sharp-tailed grouse
- High level of diversity
- Priority Species include golden eagle, bald eagle, elk, beaver, mule deer



# Koch Property Asotin County



- Inholding on the wildlife area
- Estimated annual O&M \$18,315
- Payment In-lieu of Property Tax Estimated at \$1,300 annually
- Purchase funded by
  - US Fish and Wildlife Service
  - The Rocky Mountain Elk Foundation
  - The Mule Deer Foundation
  - The Inland Northwest Wildlife Council

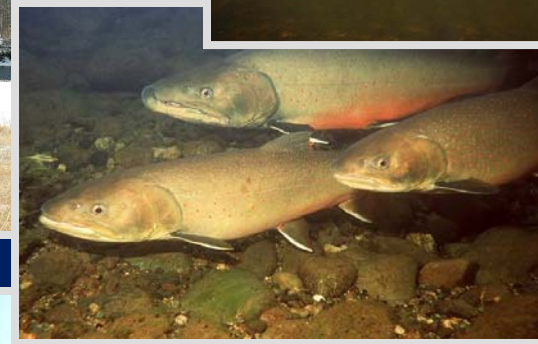
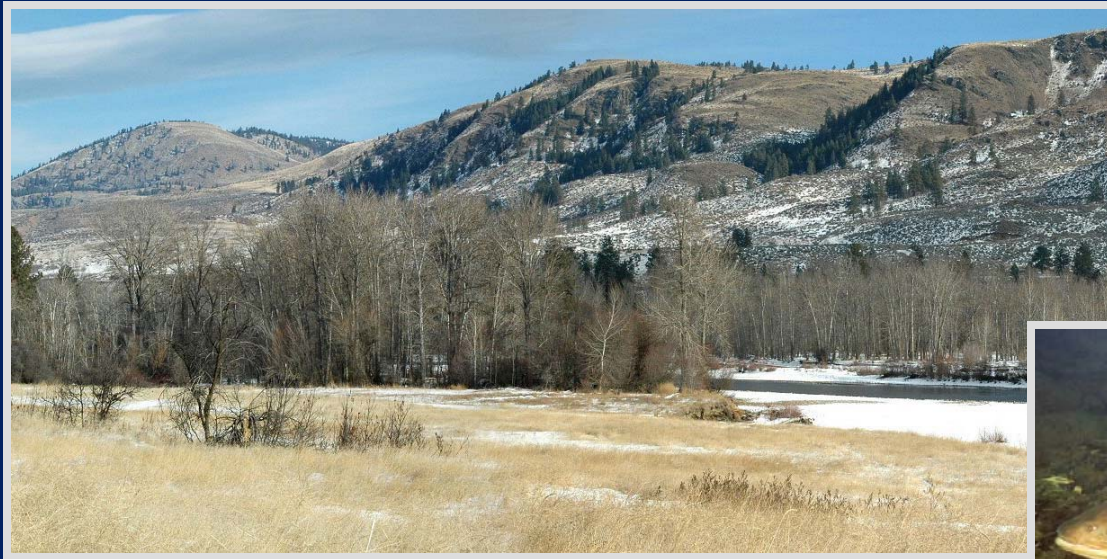
# Geestman Property Okanogan County



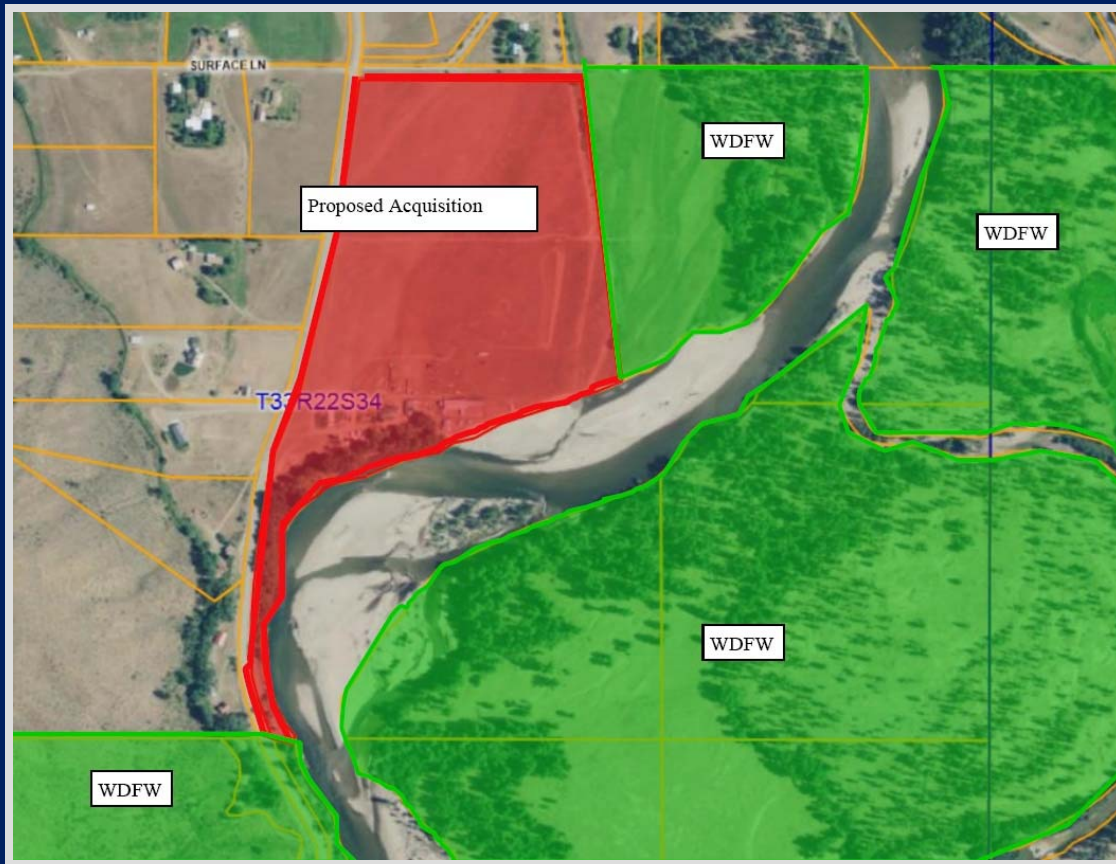
WDFW Lands 20/20

**Methow Wildlife Area**

# Geestman Property Okanogan County



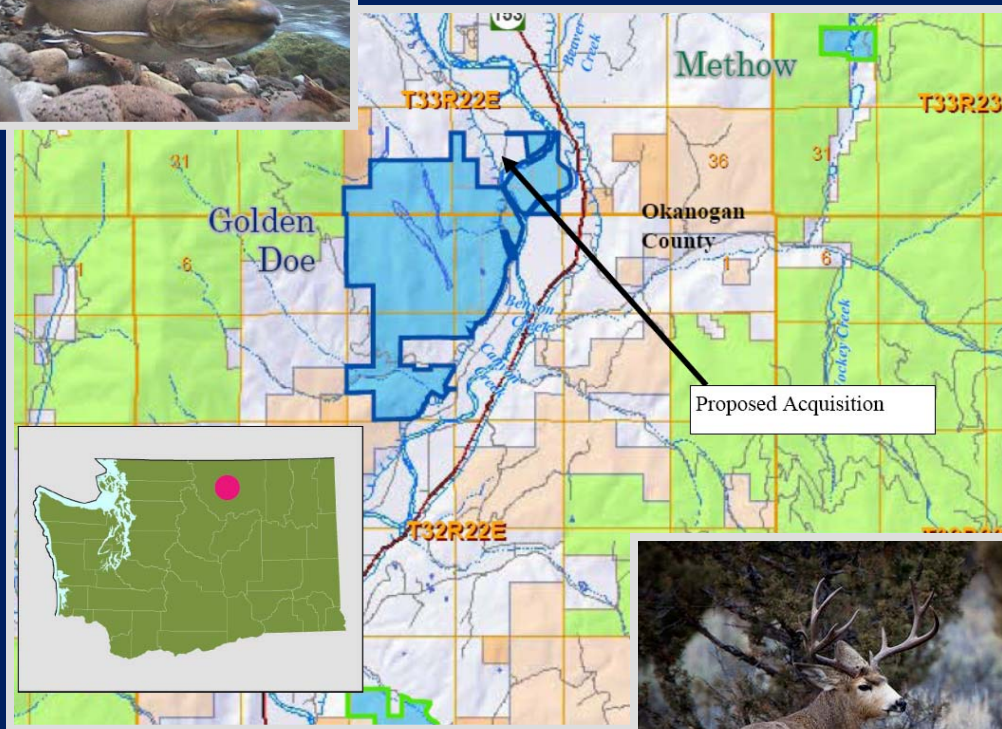
# Geestman Property Okanogan County



- Methow River Frontage
- Bull Trout
- Upper Columbia Spring Chinook
- Summer Steelhead
- Connectivity
- Mule Deer
- Wide Ranging Wildlife



# Geestman Property Okanogan County



- Estimated annual O&M \$800
- Payment In-lieu of Property Tax Estimated at \$250
- Purchase funded by US Fish and Wildlife Service



# Land Transactions Questions