

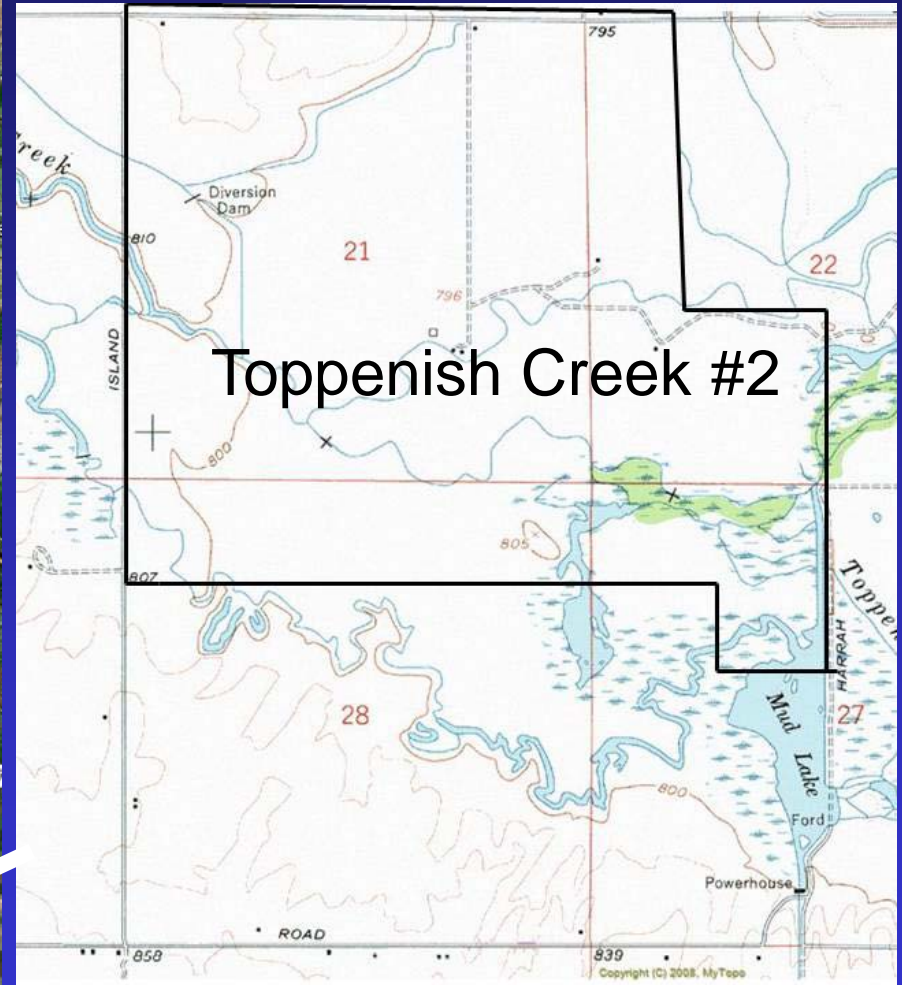
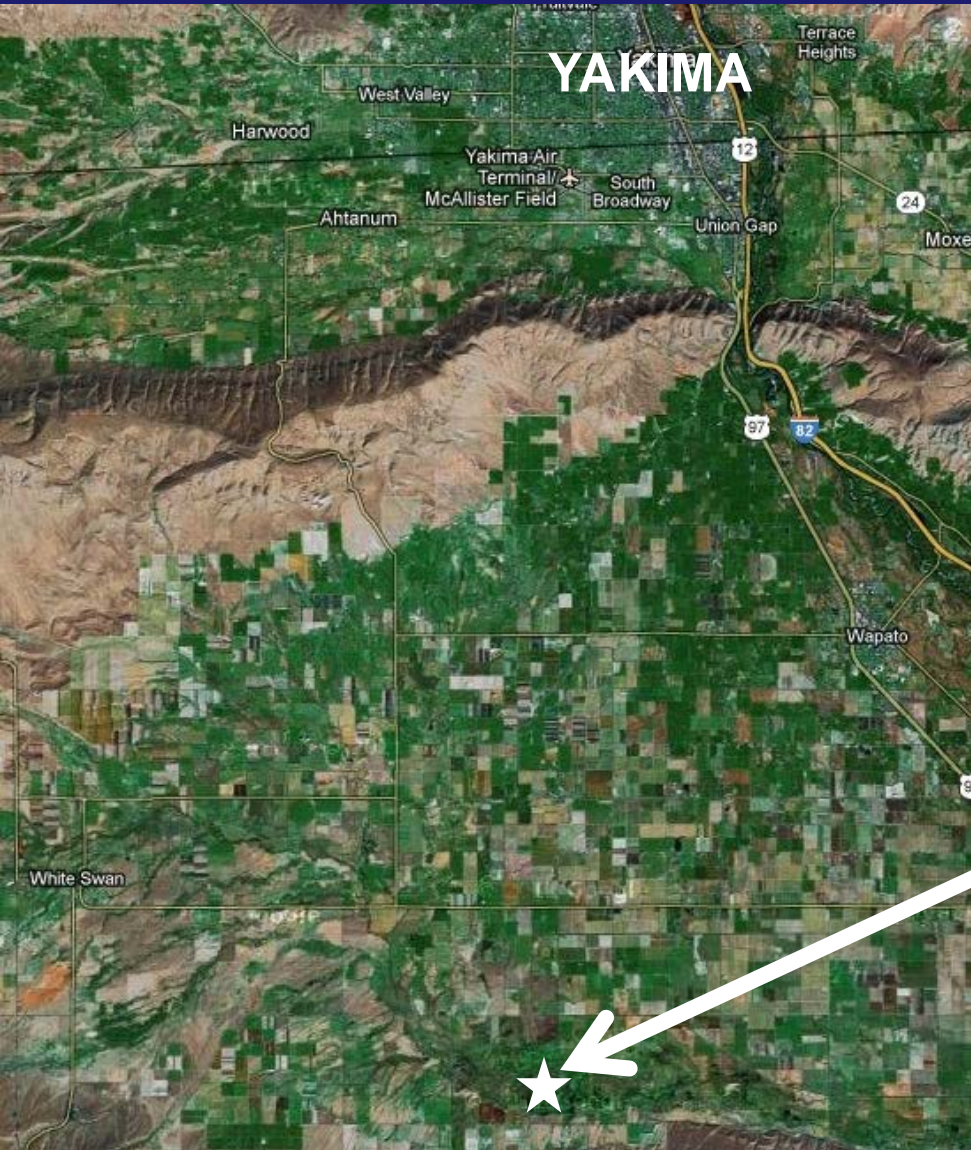
Agenda Item 8
GAME RESERVES
AND WATERFOWL CLOSURES

Rule Briefing, Public Hearing and
Rule Action

WAC 232-16-400

TOPPENISH CREEK GAME RESERVE

WAC 232-16-440



TOPPENISH CREEK GAME RESERVE

WAC 232-16-440

- **Game Reserves: closed areas where hunting for all wild animals and wild birds is prohibited (RCW 77.08.010)**
- **Currently 28 reserves, periodically reviewed**
- **Toppenish Game Reserve established in 1960**
- **2 parcels, mostly on Yakama Nation lands**
- **Established to improve waterfowl distribution**

TOPPENISH CREEK GAME RESERVE

WAC 232-16-440

- **Hydrologic changes in western parcel (#2) have resulted in much lower waterfowl use**
- **Department working with Toppenish NWR to expand upland bird hunting opportunities**
- **Elimination of reserve would allow hunting on USFWS and private land parcels in NE area**
- **Action supported by USFWS, YN, private landowner**
- **Most of WDFW reserve will remain in reserve status through YN**

TOPPENISH CREEK GAME RESERVE

WAC 232-16-440

