

Agenda Item 9

MIGRATORY WATERFOWL SEASONS Rule Briefing, Public Hearing and Rule Action

WAC 232-28-436

MIGRATORY WATERFOWL SEASONS

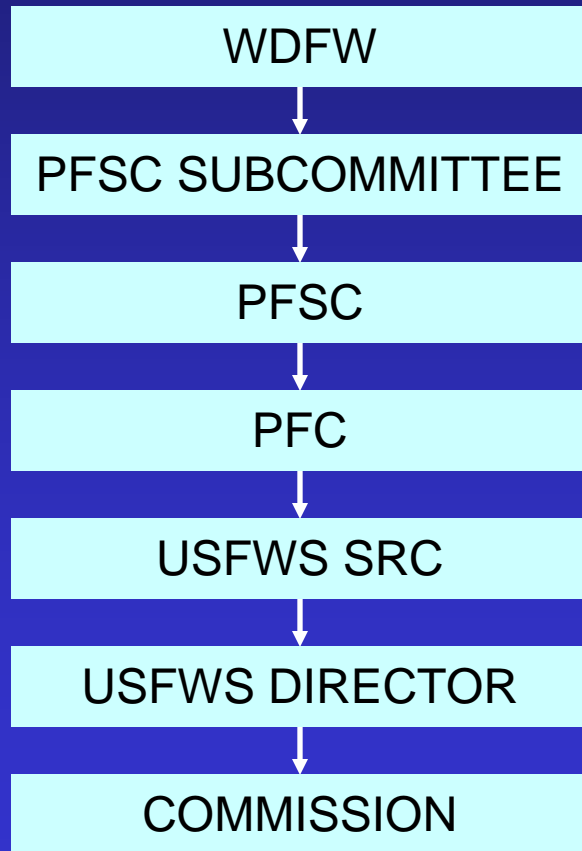
Rule Briefing, Public Hearing and Rule Action

- **USFWS Authority: Federal Framework**
 - Earliest opening, latest closing date
 - Maximum limits, season length
 - Shooting hours
- **State Discretion: WAC**
 - Can be more restrictive but not more liberal
 - Season timing, split seasons, zones

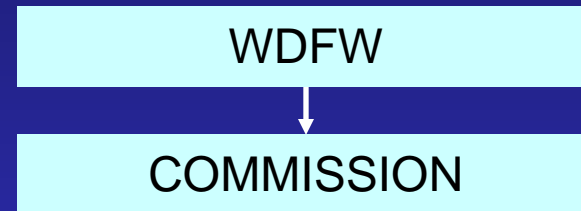


Steps in Approval of Migratory Bird Seasons

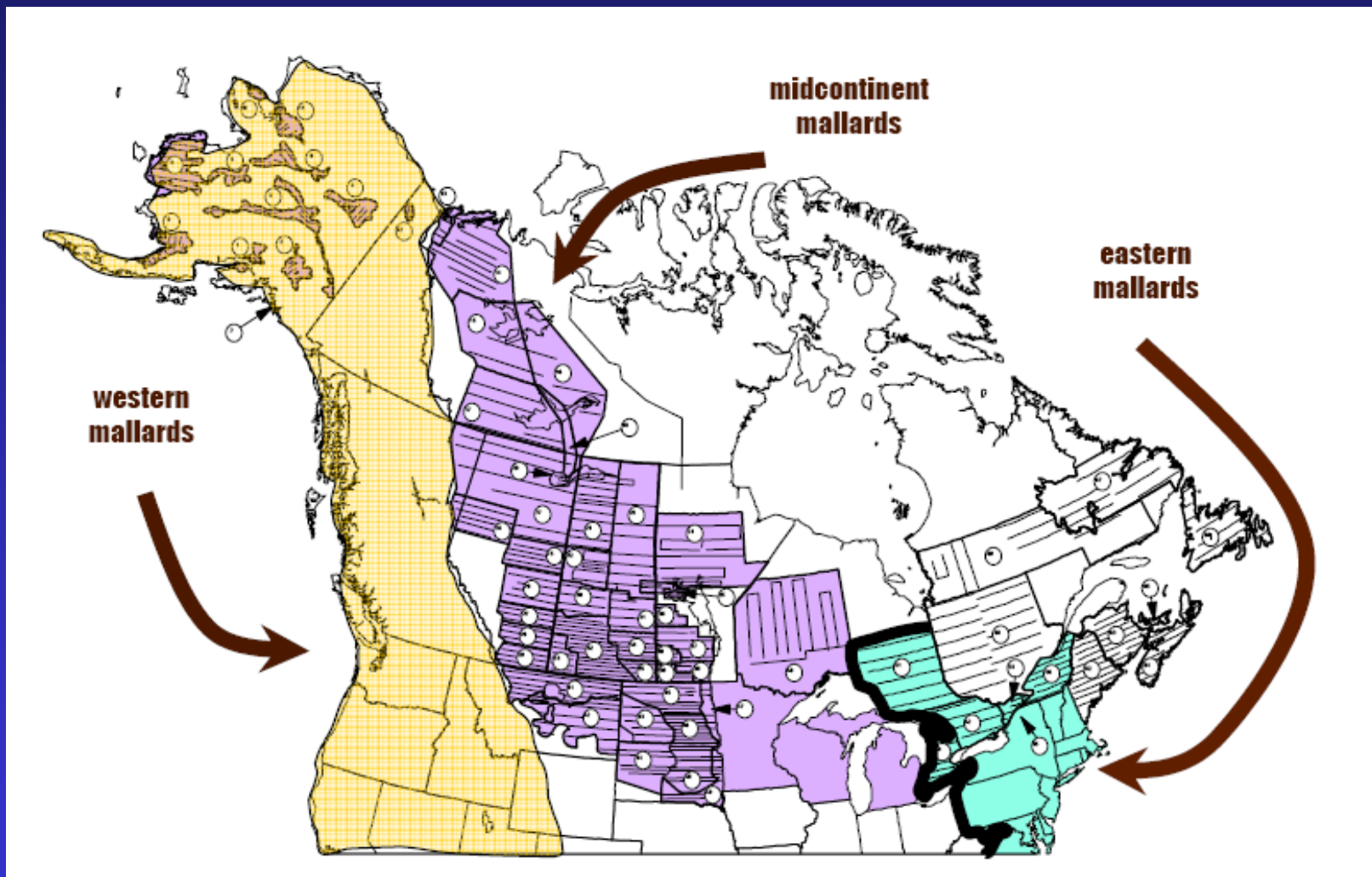
FRAMEWORK CHANGES



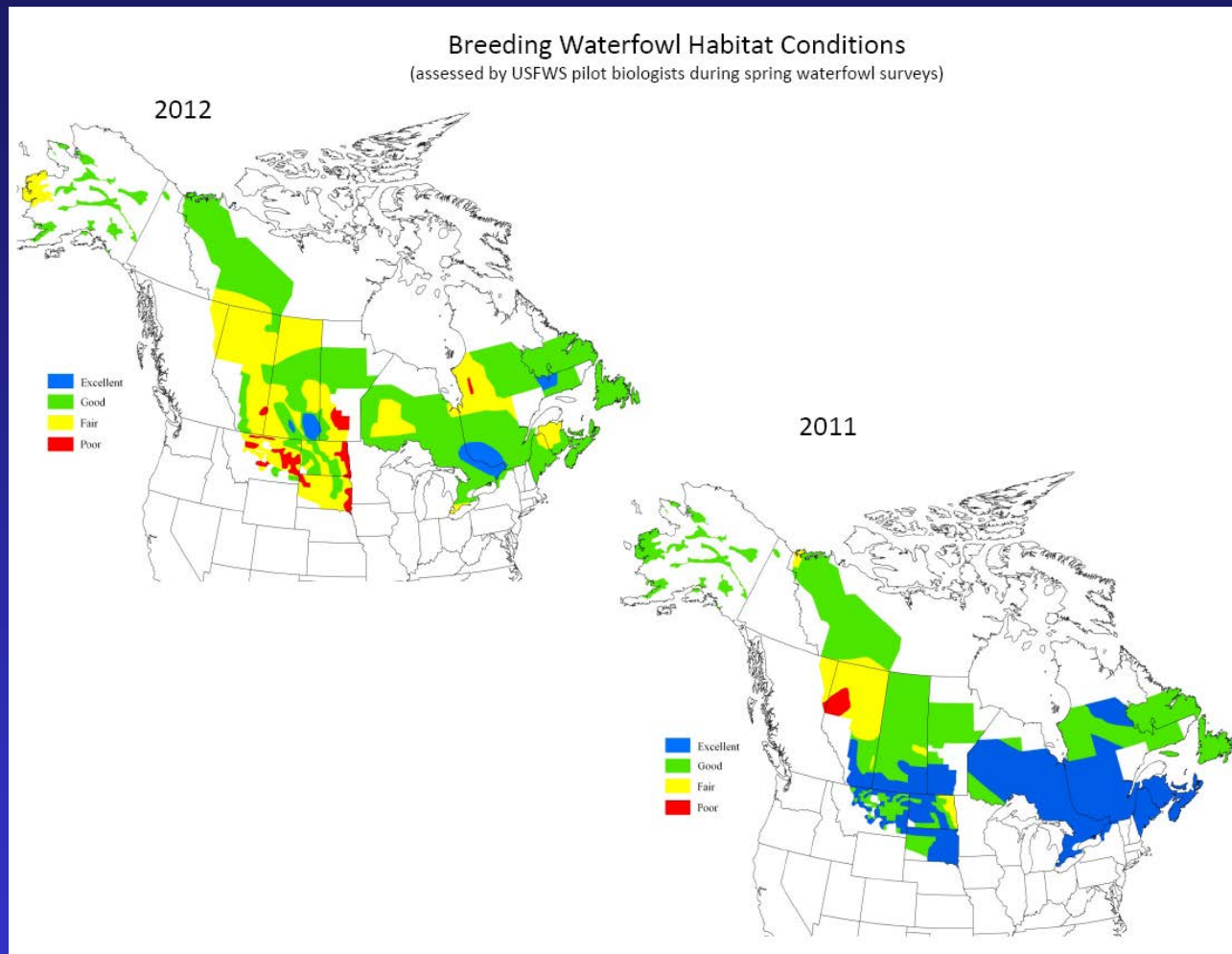
NON-FRAMEWORK CHANGES



N. American Mallard Stocks

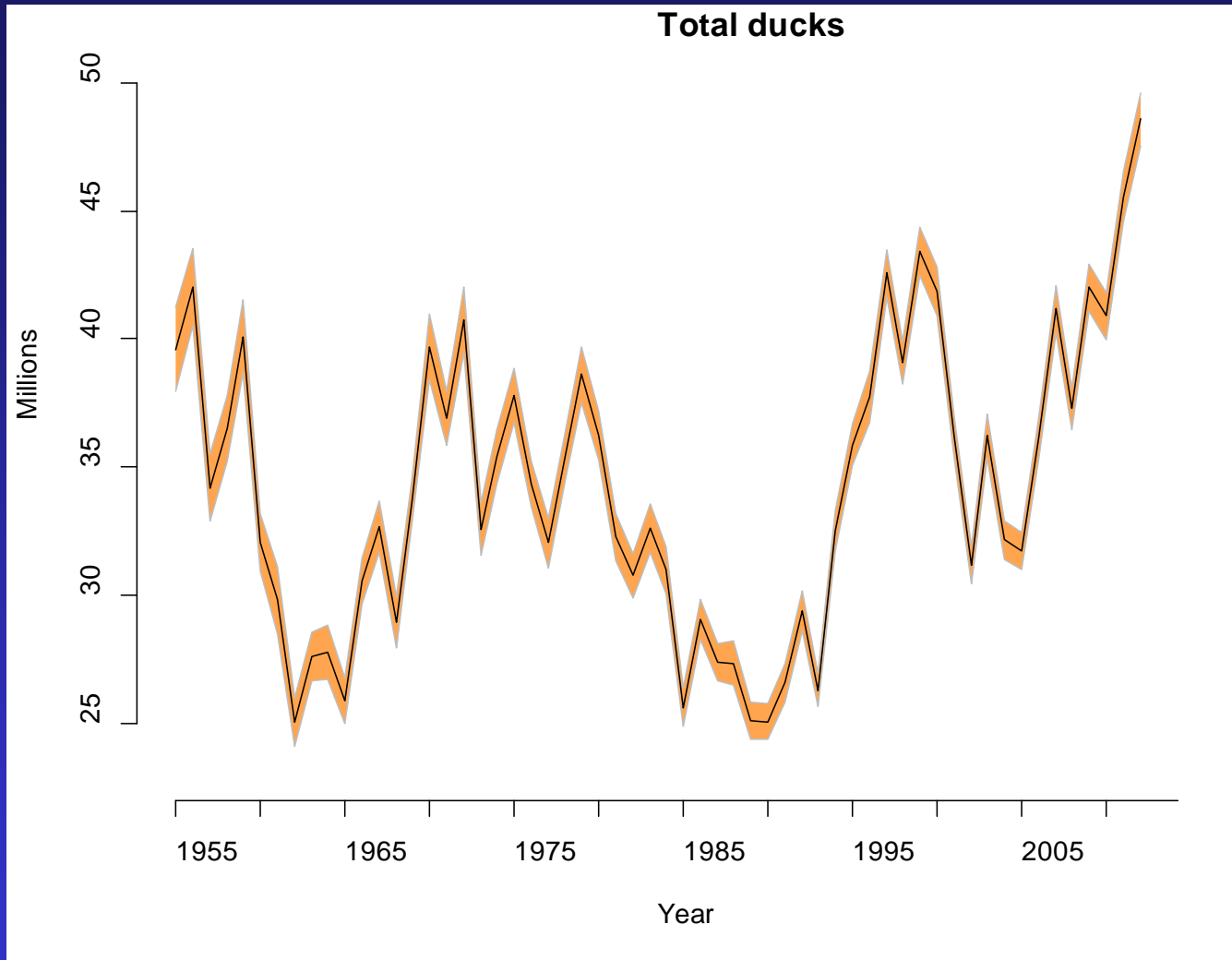


N. American Habitat Conditions



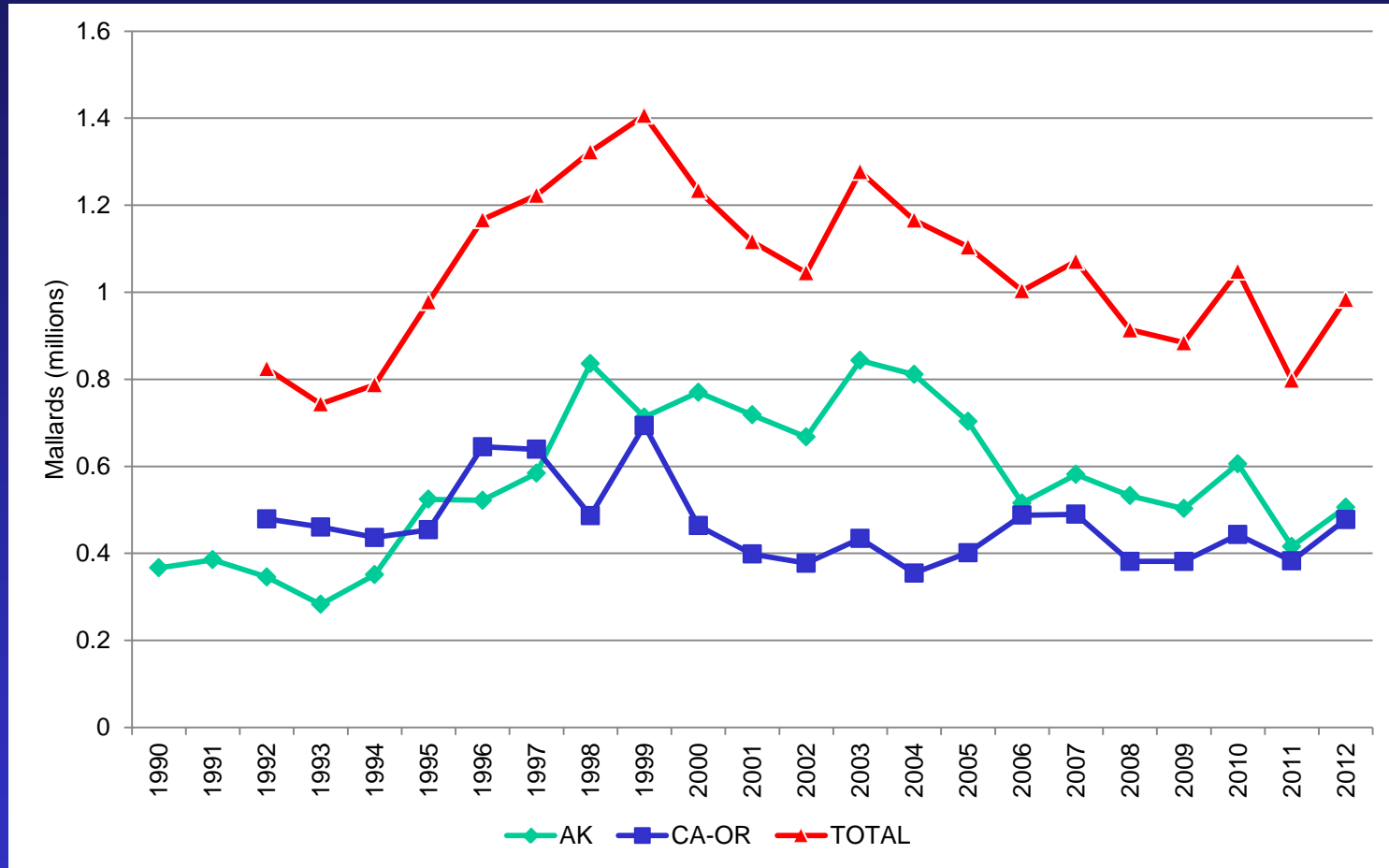
- 2012: Drier conditions than 2011

N. American Duck Populations



- New record year for mid-continent population (+7%)

2012 Western Mallard Trends



- Increased breeding populations in AK, OR, CA (+23%)
- Increased breeding populations in WA (+46%)

2012-13 Western Mallard Regulatory Prescription

CA-OR BPOP ^b	Alaska BPOP ^b											
	0.0	0.05	0.10	0.15	0.20	0.25	0.30	0.35	0.40	0.45	0.50	≥0.55
0.0	C	C	M	L	L	L	L	L	L	L	L	L
0.05	C	C	C	R	R	M	M	M	L	L	L	L
0.10	C	R	R	M	M	L	L	L	L	L	L	L
0.15	R	R	M	M	L	L	L	L	L	L	L	L
0.20	M	R	L	L	L	L	L	L	L	L	L	L
0.25	L	R	L	L	L	L	L	L	L	L	L	L
0.30	L	M	L	L	L	L	L	L	L	L	L	L
0.35	L	M	L	L	L	L	L	L	L	L	L	L
0.40	L	M	L	L	L	L	L	L	L	L	L	L
0.45	L	M	L	L	L	L	L	L	L	L	L	L
0.50	L	M	L	L	L	L	L	L	L	L	L	L
≥0.55	L	M	L	L	L	L	L	L	L	L	L	L

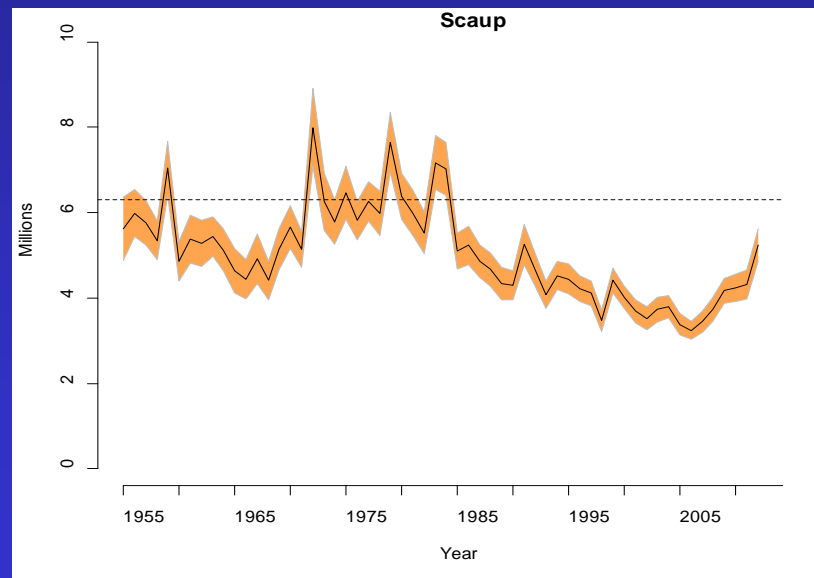
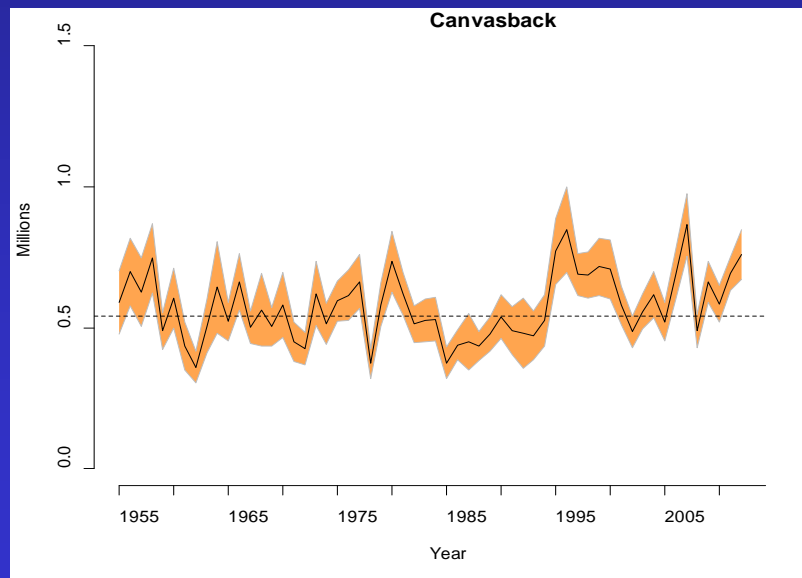
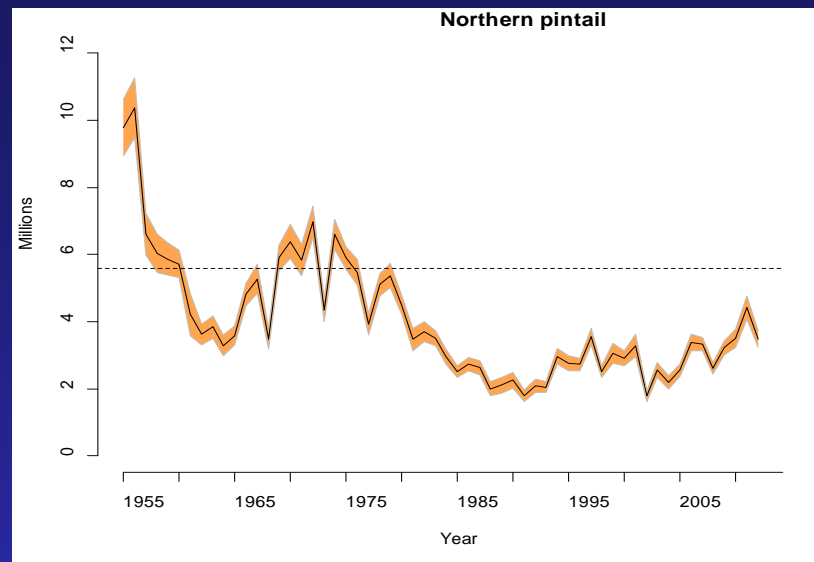
^a C = closed season, R = restrictive, M = moderate, L = liberal.

^b Estimated number of mallards (in millions) for Alaska (WBPHS strata 1-12) and in California-Oregon.

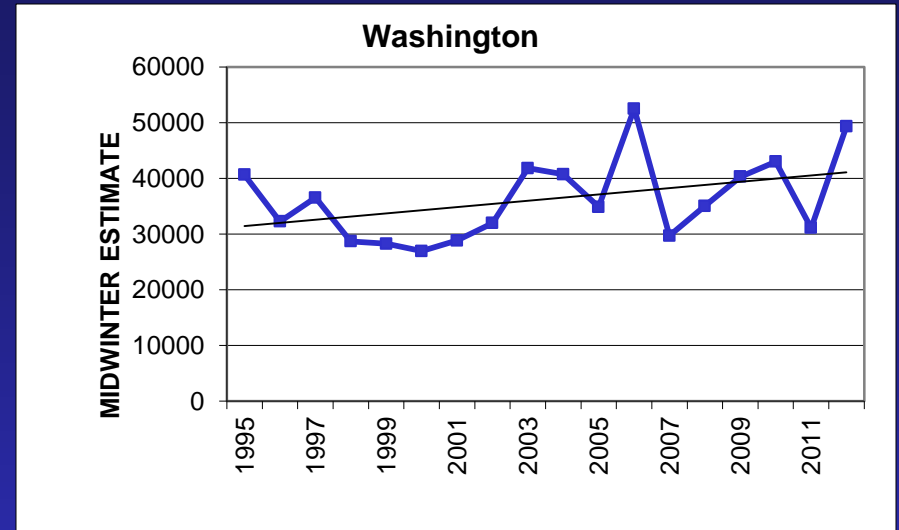
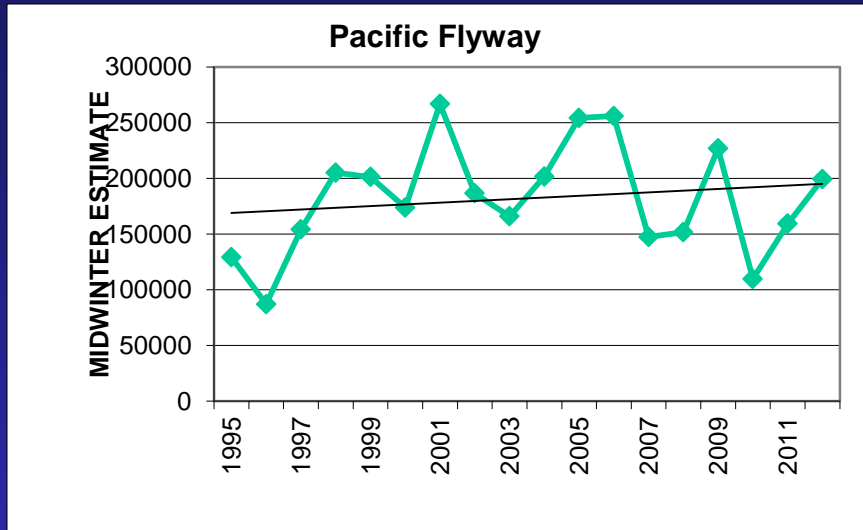
- Liberal Season Package: 107 days, 7 ducks

Pintail, Canvasback, Scaup

- Independent nationwide harvest strategies
- 2012 BPOP vs. 2011
 - Pintail (4.1 M, -7% adj.)
 - Canvasback (.8M, +10%)
 - Scaup (5.2 M, +21%)



Scaup Winter Trends

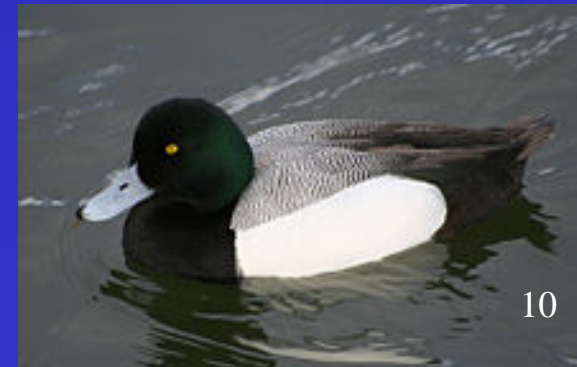


- Pacific Flyway MWS +25%

- Washington MWS +58%



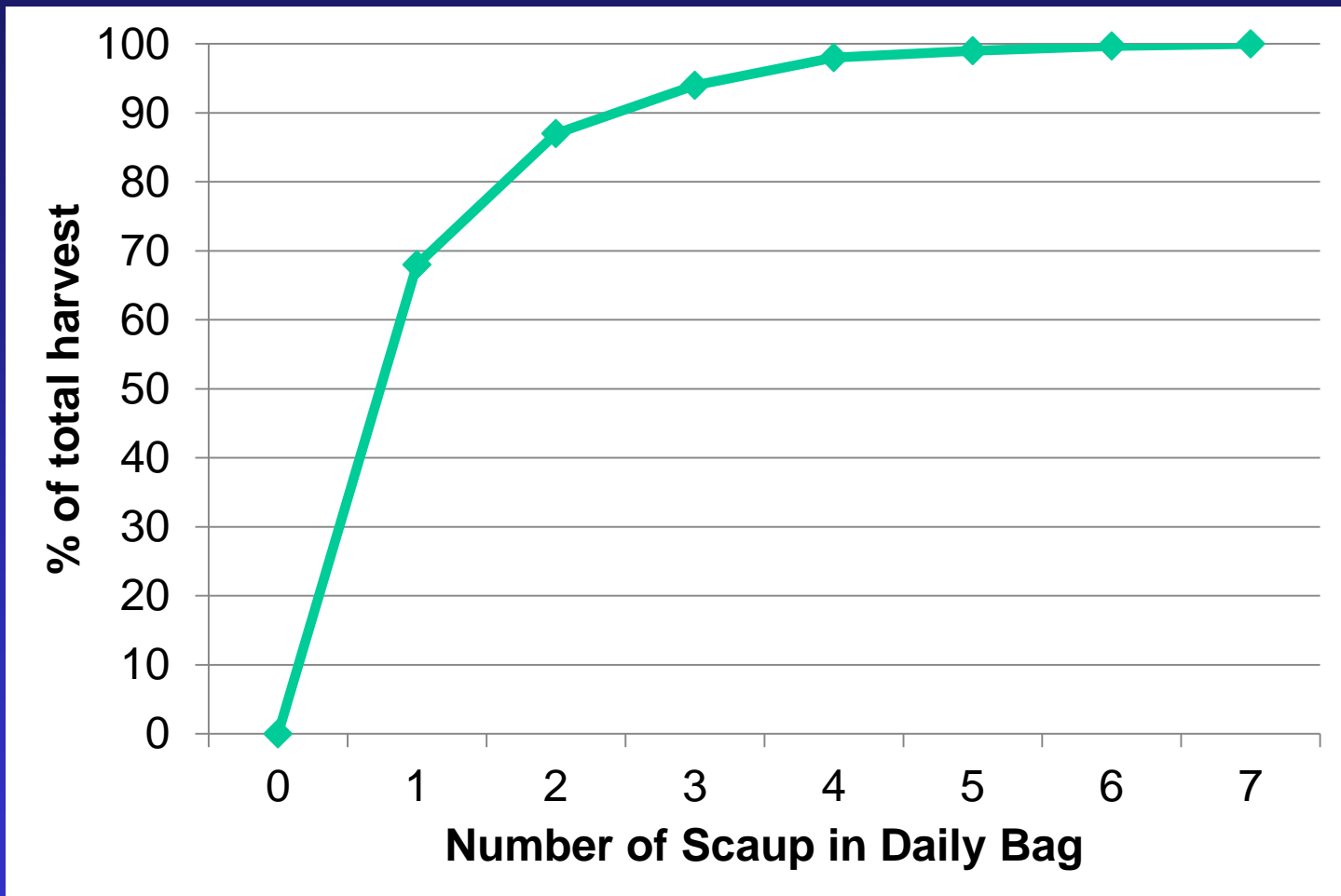
August 3-4, 2012 Commission Meeting



Scaup Harvest Strategy

- **Adopted by Pacific Flyway & USFWS in 2008**
 - Restrictive: 86 days, 2 bag limit
 - Moderate: 86 days, 3 bag limit
 - Liberal: 107 days, 7 bag limit
- **Based on Bayesian models that consider:**
 - Breeding population & other parameters
 - Allowable harvest allocated by flyway
 - Harvest potential
- **Pacific Flyway harvest = 12% of U.S. (33% GRSC)**
- **WA harvest = 3% of U.S. (~40% GRSC)**
- **Estimated 6% increase in PF harvest: bag 3 → 7**

Scaup Harvest Strategy

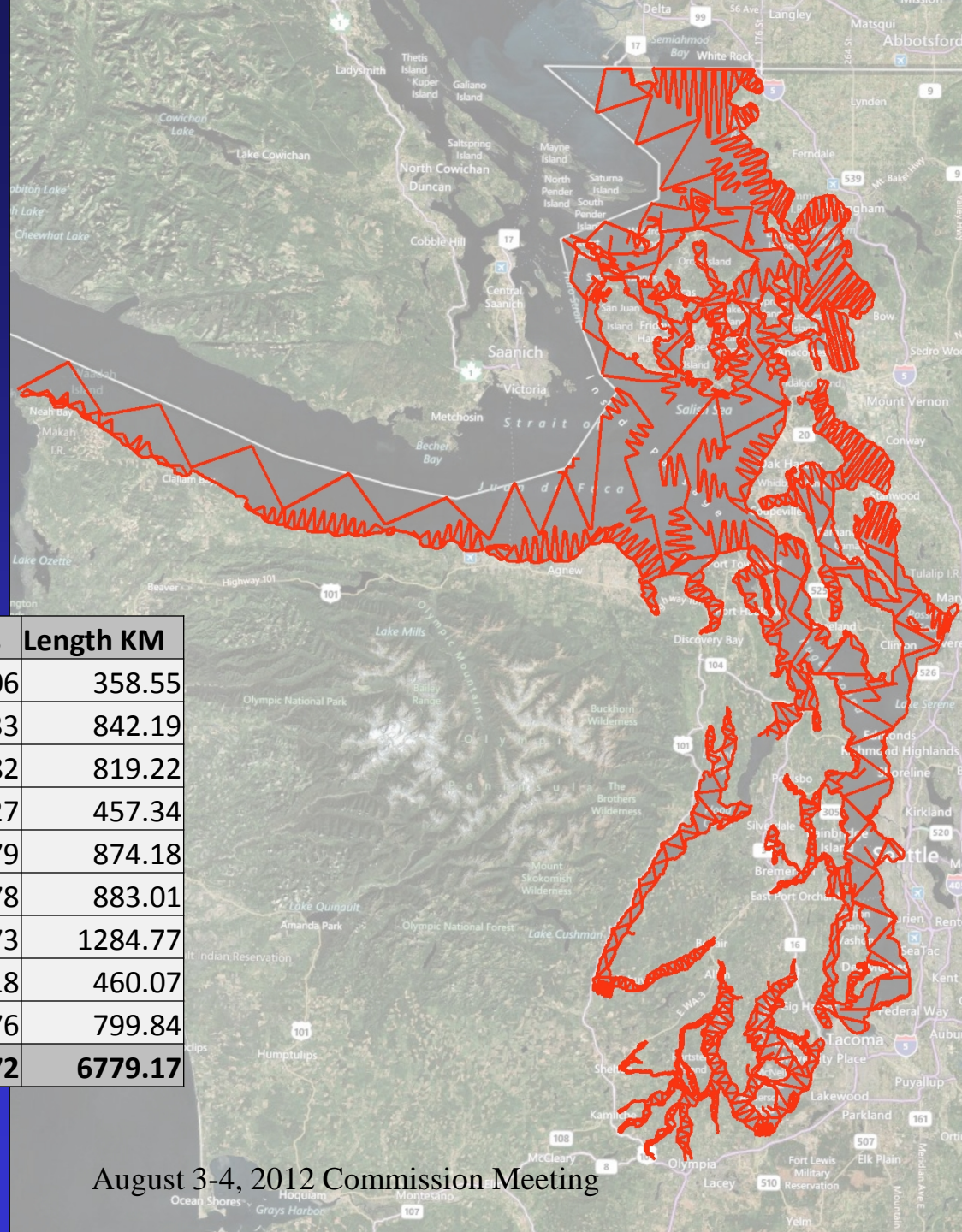


- Pacific Flyway 1996-97 harvest analysis

2012-13 Duck Season Proposals

- **Season dates and limits similar to 2011-12**
 - 107 days
 - 2 day youth hunt
 - 105 day general season
 - 7 ducks, to include not more than:
 - 2 hen mallard, 2 pintail
 - 2 redhead, 1 canvasback
 - W. WA: 2 scoter, 2 long-tail, 2 goldeneye, 1 harlequin
- **Recommended adjustment: Scaup (p. 1)**
 - Implementation of flyway harvest strategy (107 / 7)

Puget Sound Winter Aerial Surveys

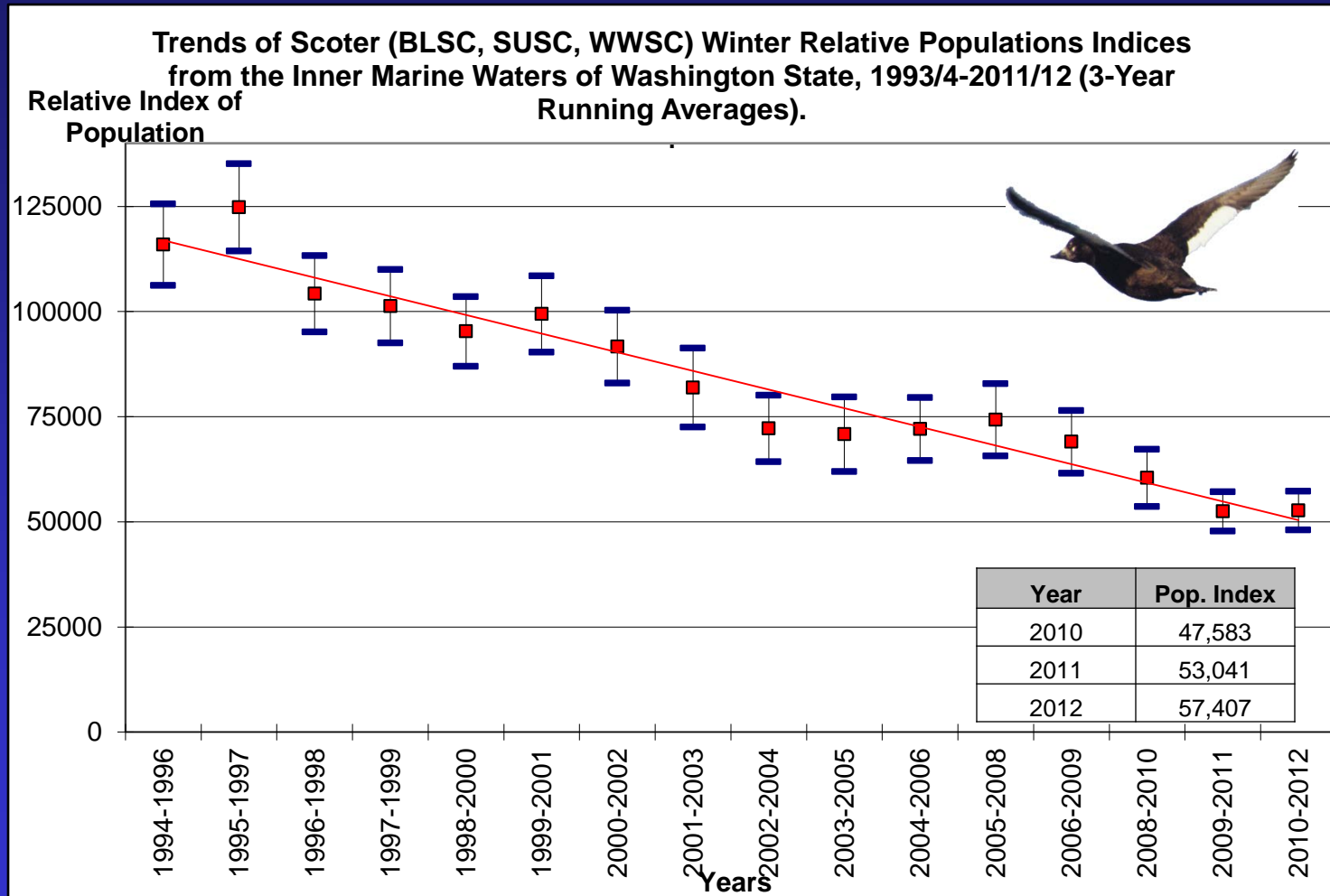


Basin	# Transects	Length KM
Admiralty Inlet	106	358.55
Central Puget Sound	233	842.19
Eastern Strait of Juan de Fuca	182	819.22
Hood Canal	127	457.34
San Juan Islands	279	874.18
Southern Puget Sound	278	883.01
Strait of Georgia	273	1284.77
Western Strait of Juan de Fuca	118	460.07
Whidbey Basin	176	799.84
TOTAL	1772	6779.17

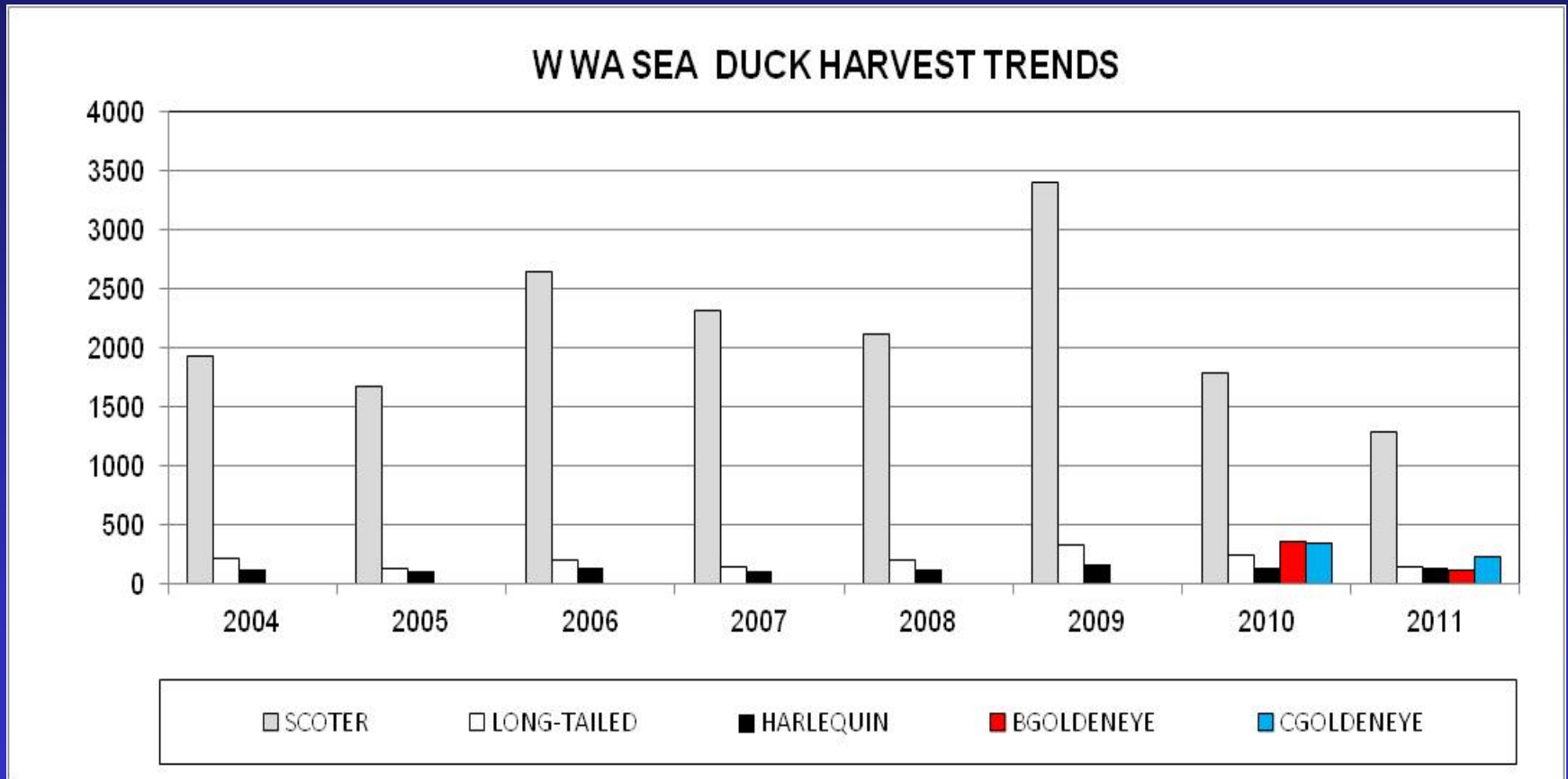
August 3-4, 2012 Commission Meeting

Puget Sound Sea Duck Trends

Scoters

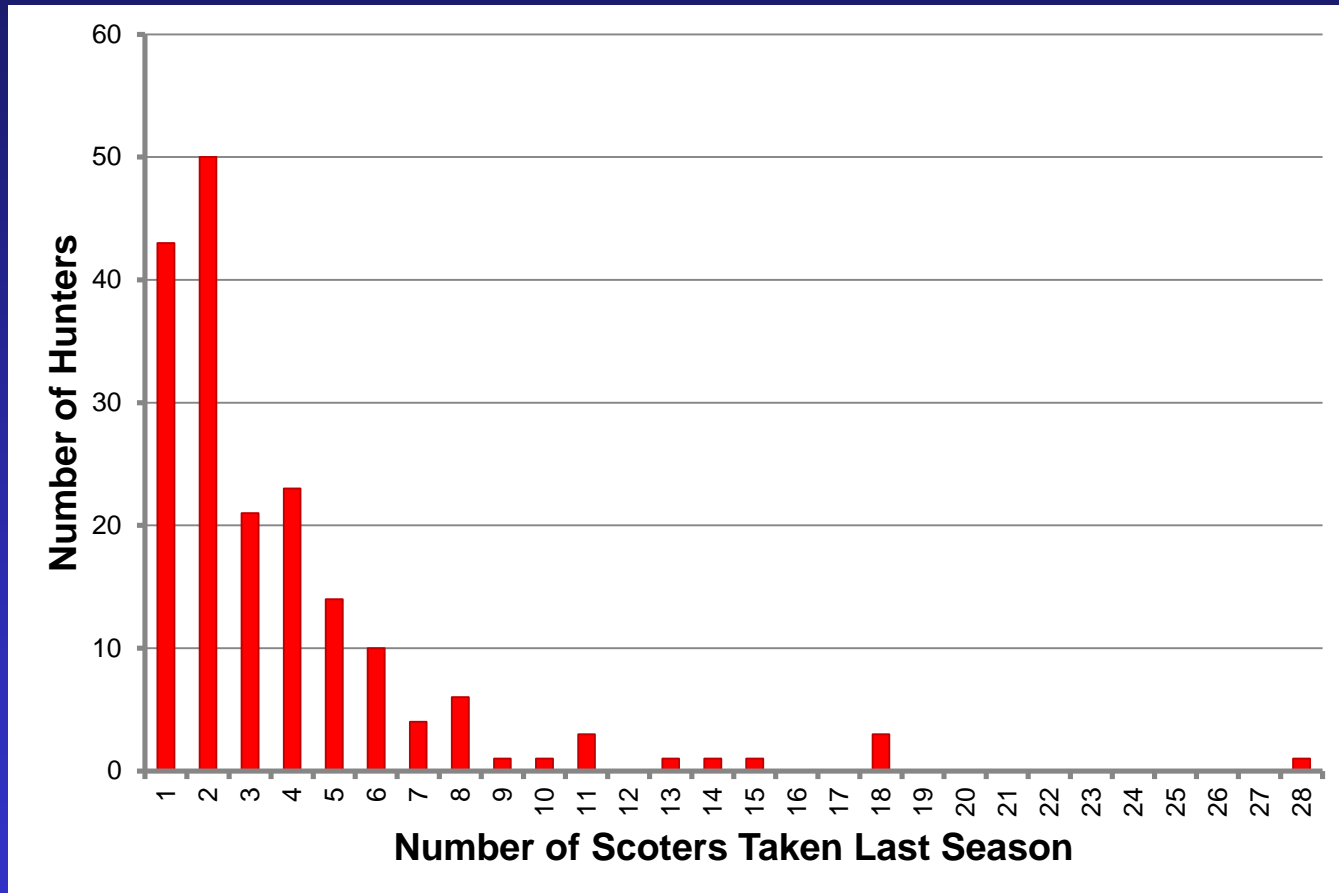


Puget Sound Sea Duck Harvest Trends



- Evaluation of harvest strategy planned for 2013

Puget Sound Seasonal Scoter Harvest

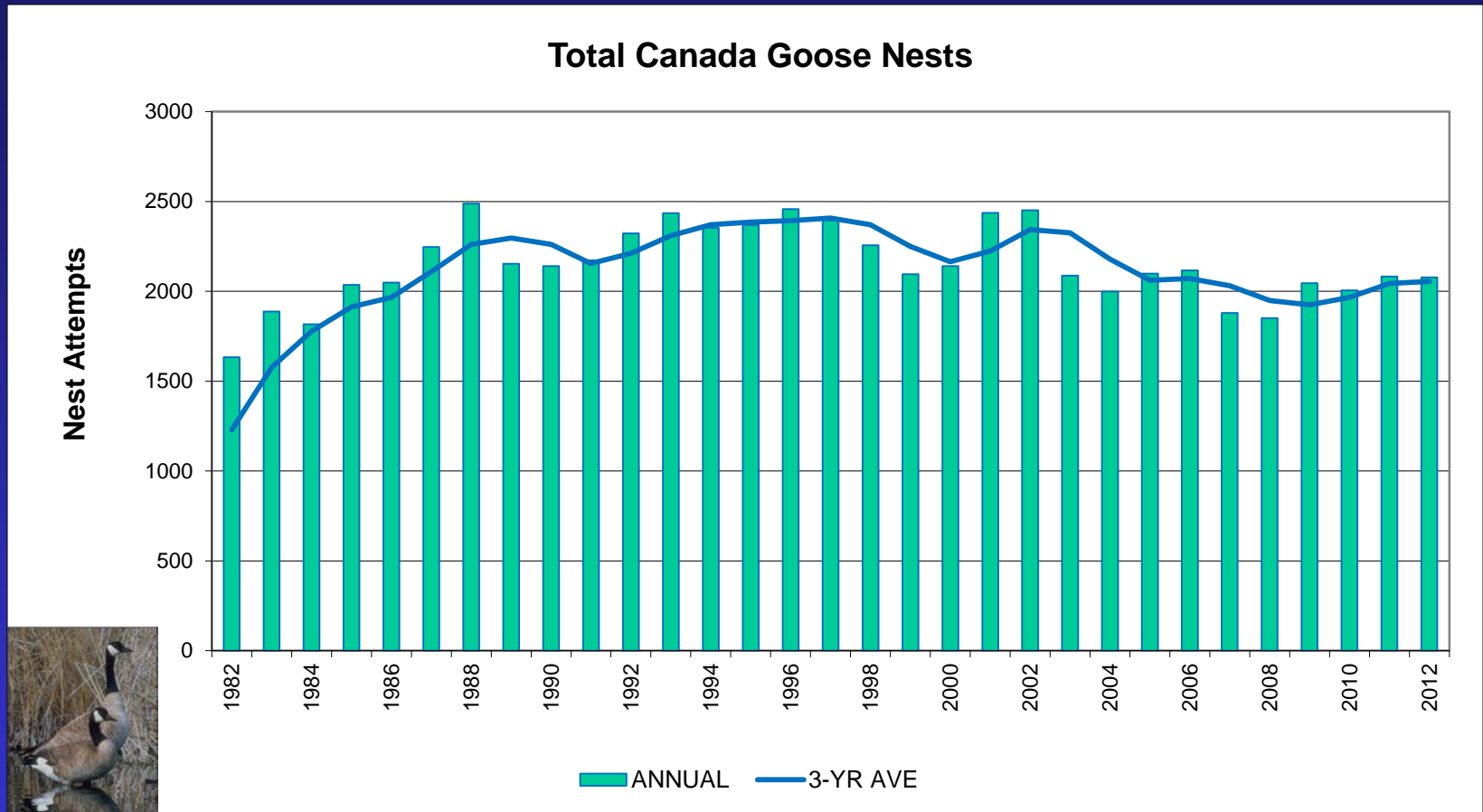


- Evaluation of harvest strategy planned for 2013

Goose Population Status 2012

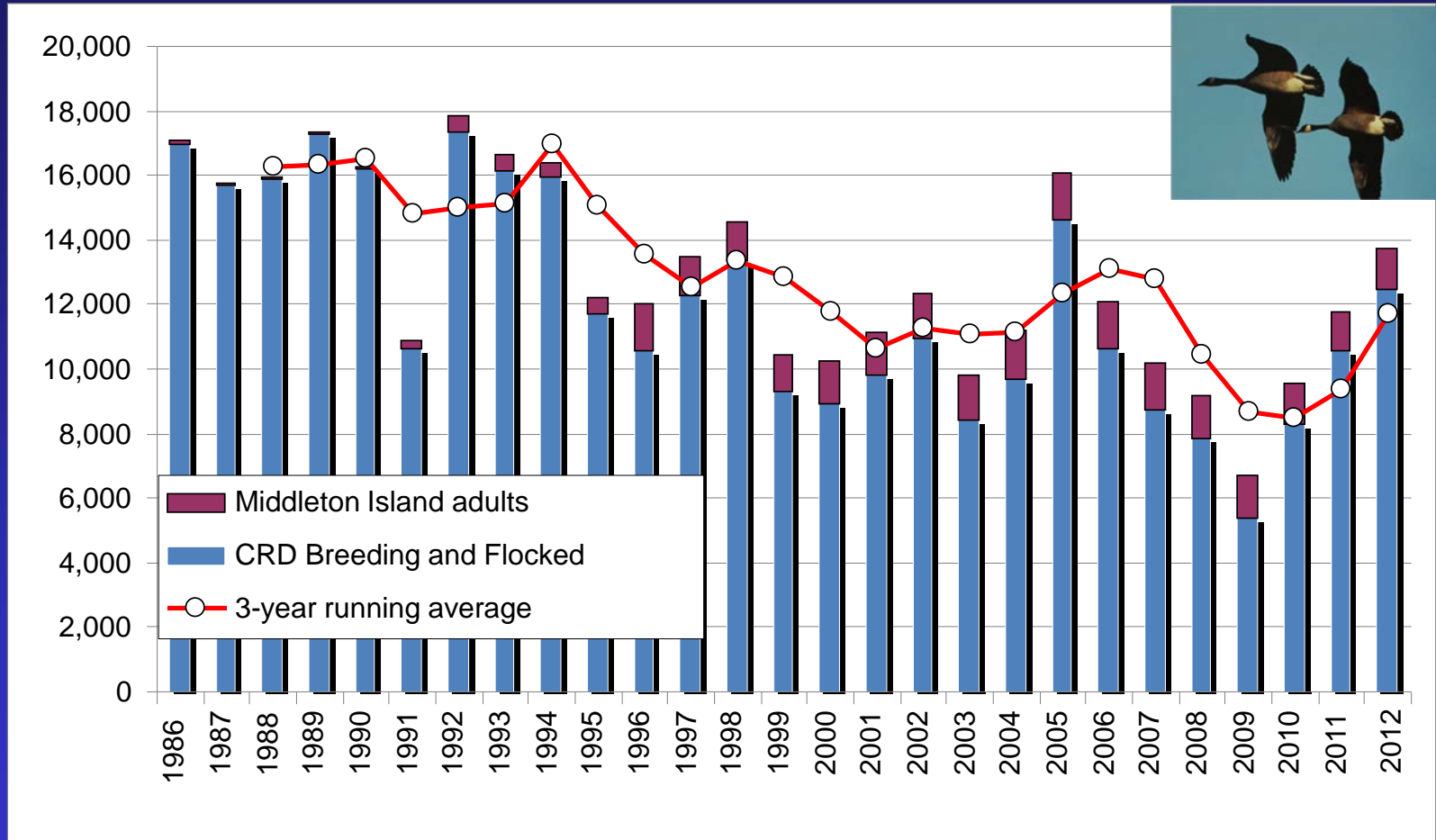


Eastern WA Canada Goose Nest Trends



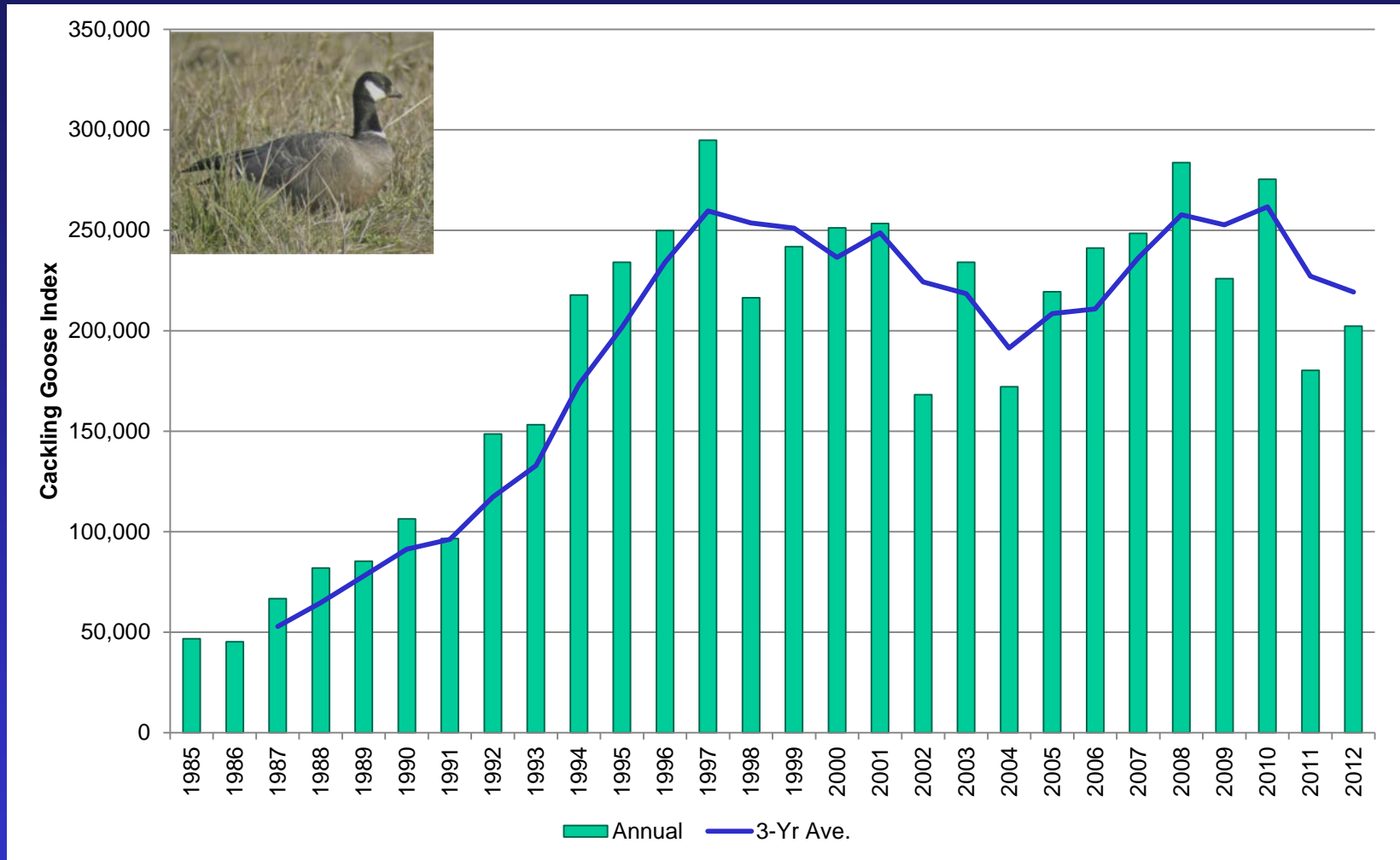
- E WA September Season Reopened: September 14-15

Dusky Canada Goose Trends



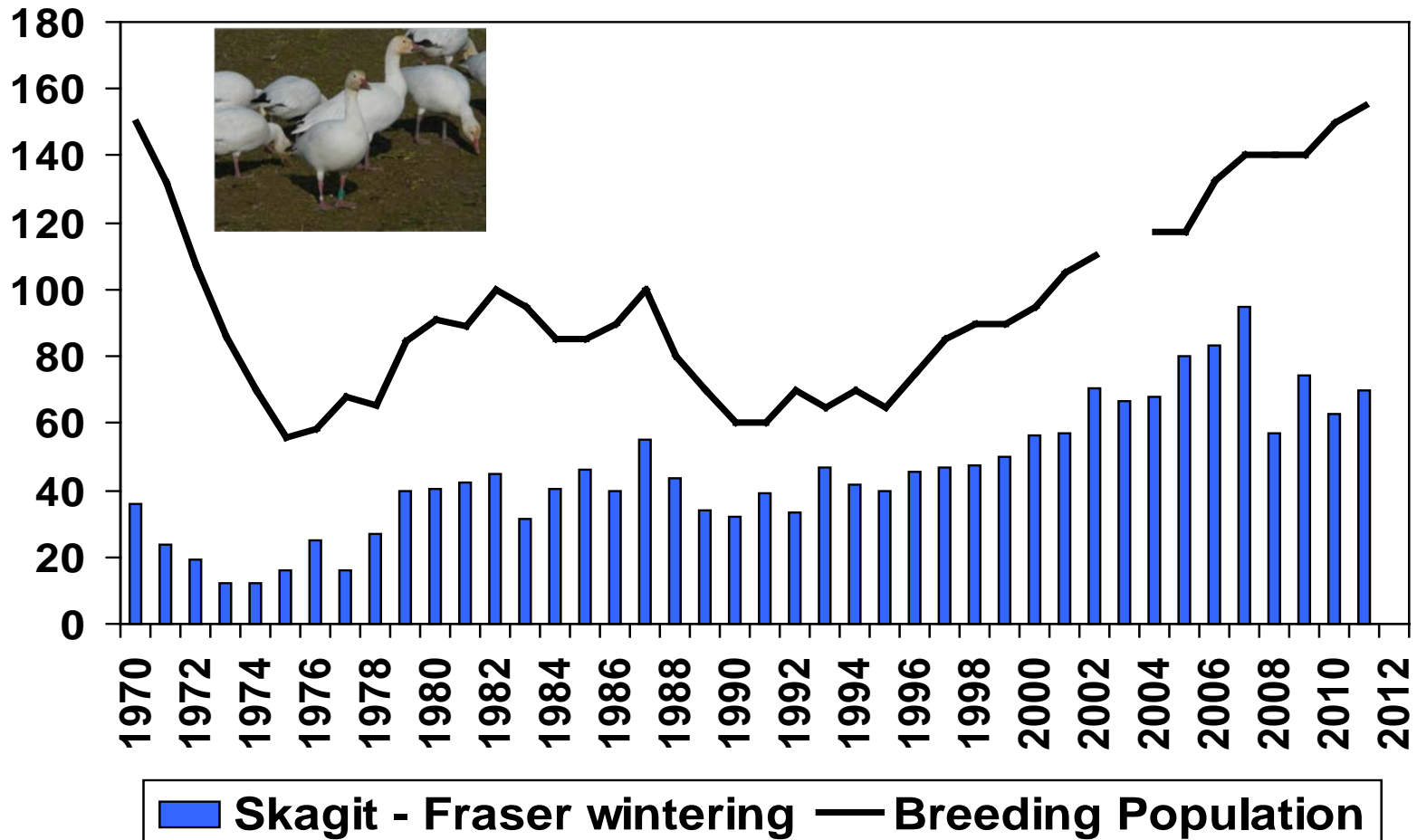
• 2012 index: +16%; 3-year average = 11,663

Cackling Goose Trends



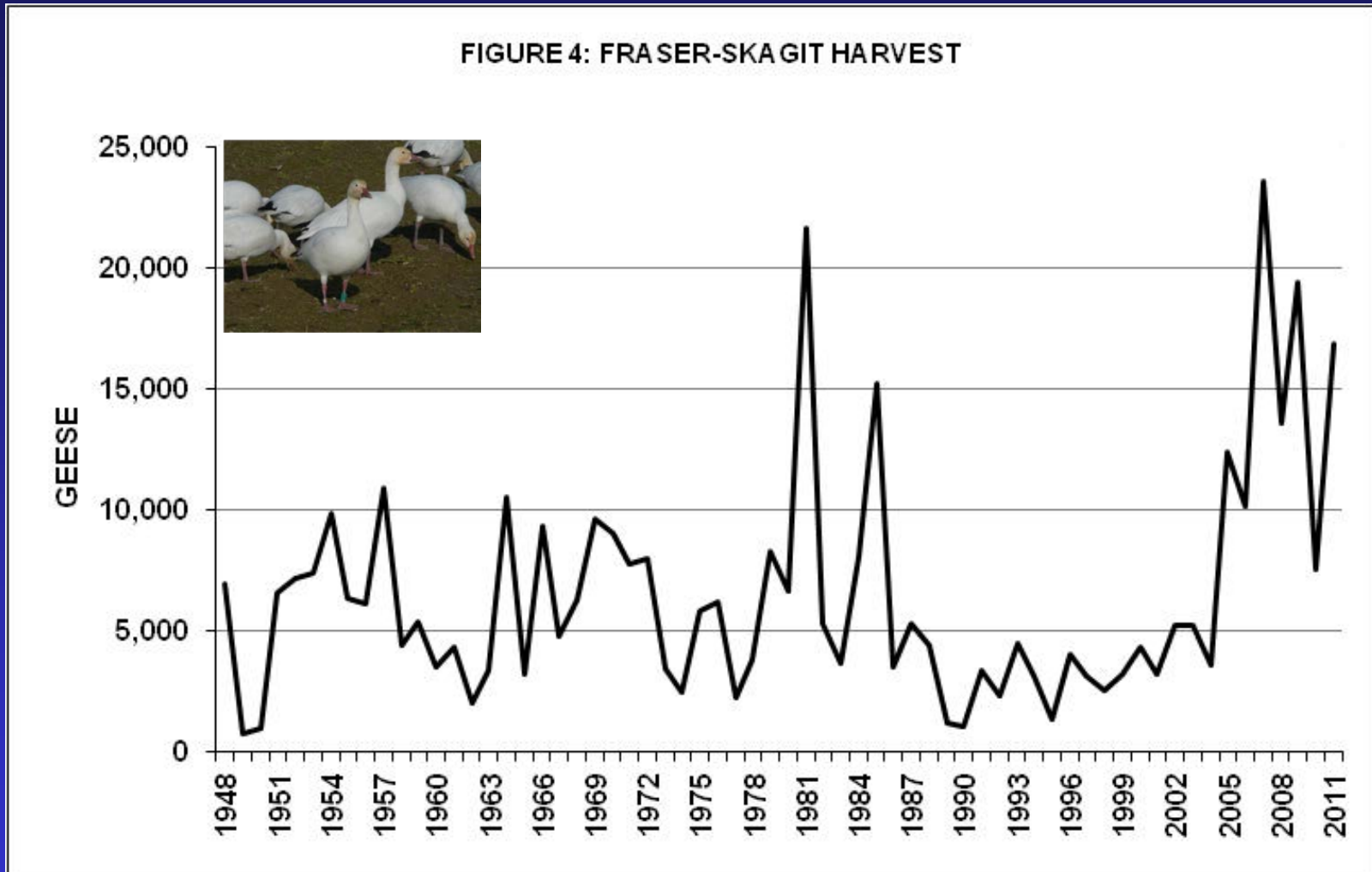
- 2012 index: +12%; 3-year average = 219,298
- 2011-12 WA harvest: 1,304 (11% of OR / WA total)

Wrangel Island Snow Goose Trends



- 2011 Wrangel Island index = 155,000 (no 2012 survey)
- 2011-12 Skagit / Fraser winter index = 69,964

Wrangel Island Snow Goose Harvest Trends

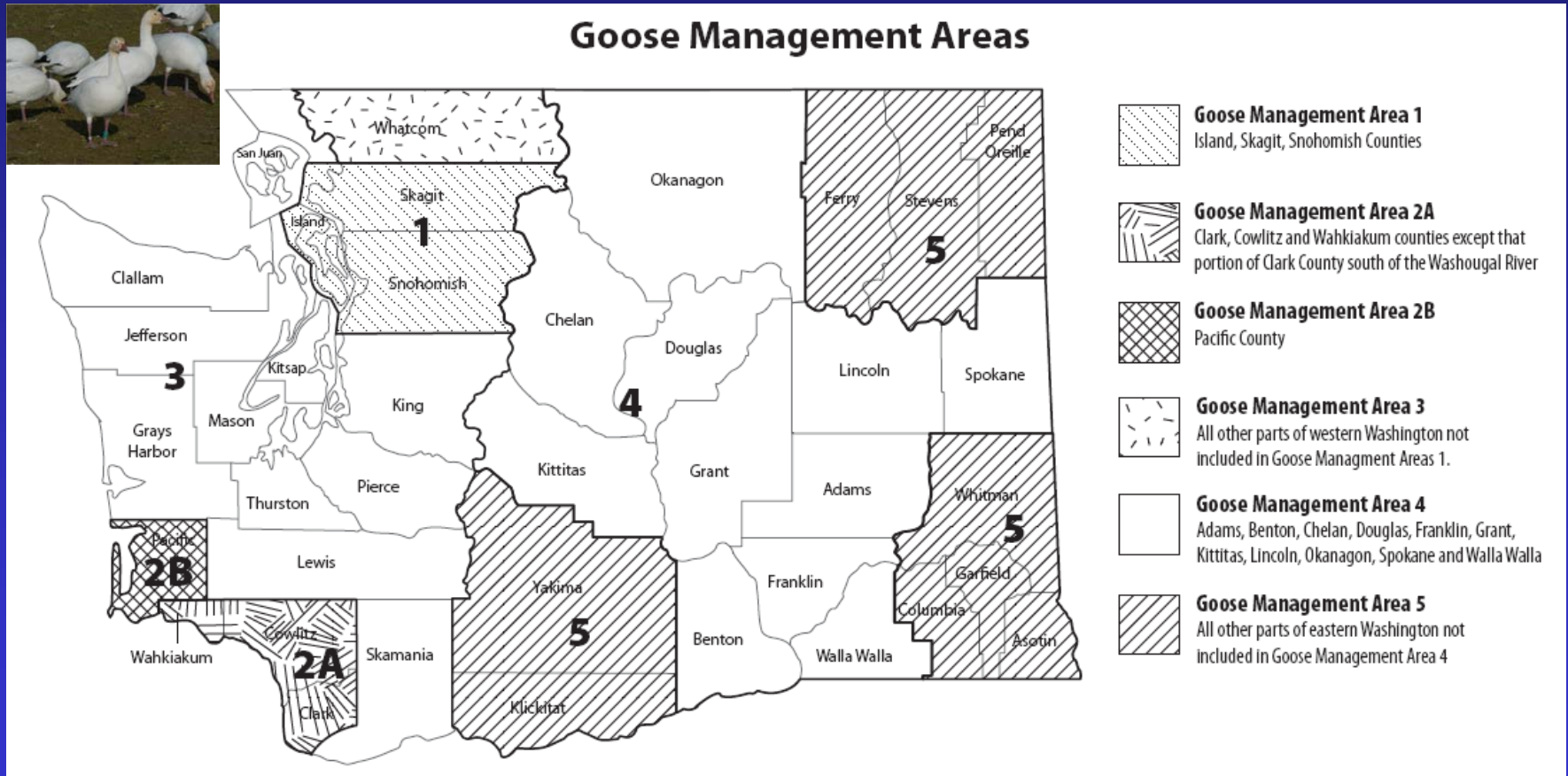


- 2011-12 Skagit / Fraser harvest = 16,863
- 21% juveniles in population

2012-13 Goose Season Proposals

Goose Management Area 1

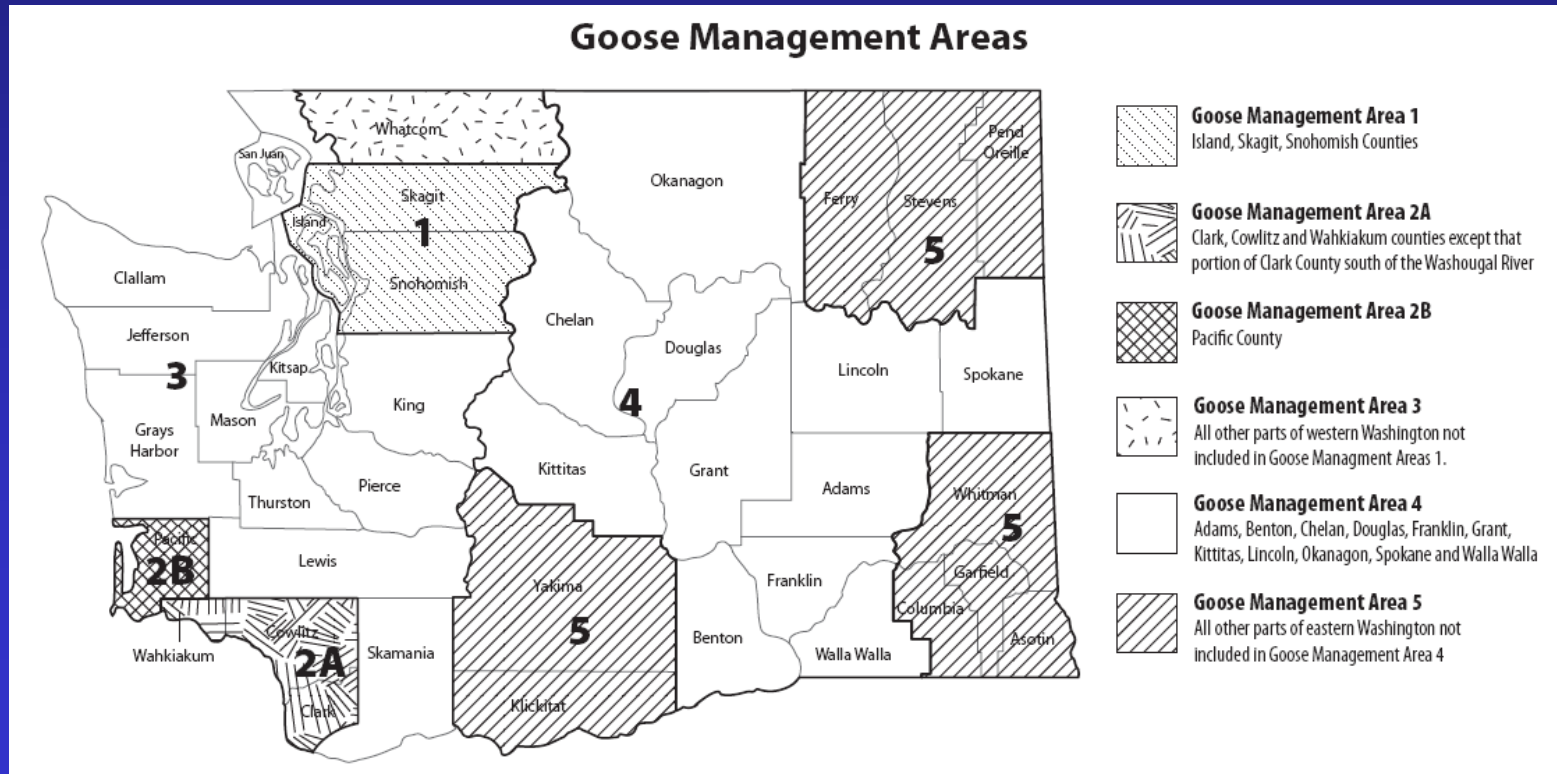
- Snow goose season similar to last year (p. 3-4)
- Maintain Fir Island management / enforcement



2012-13 Goose Season Proposals

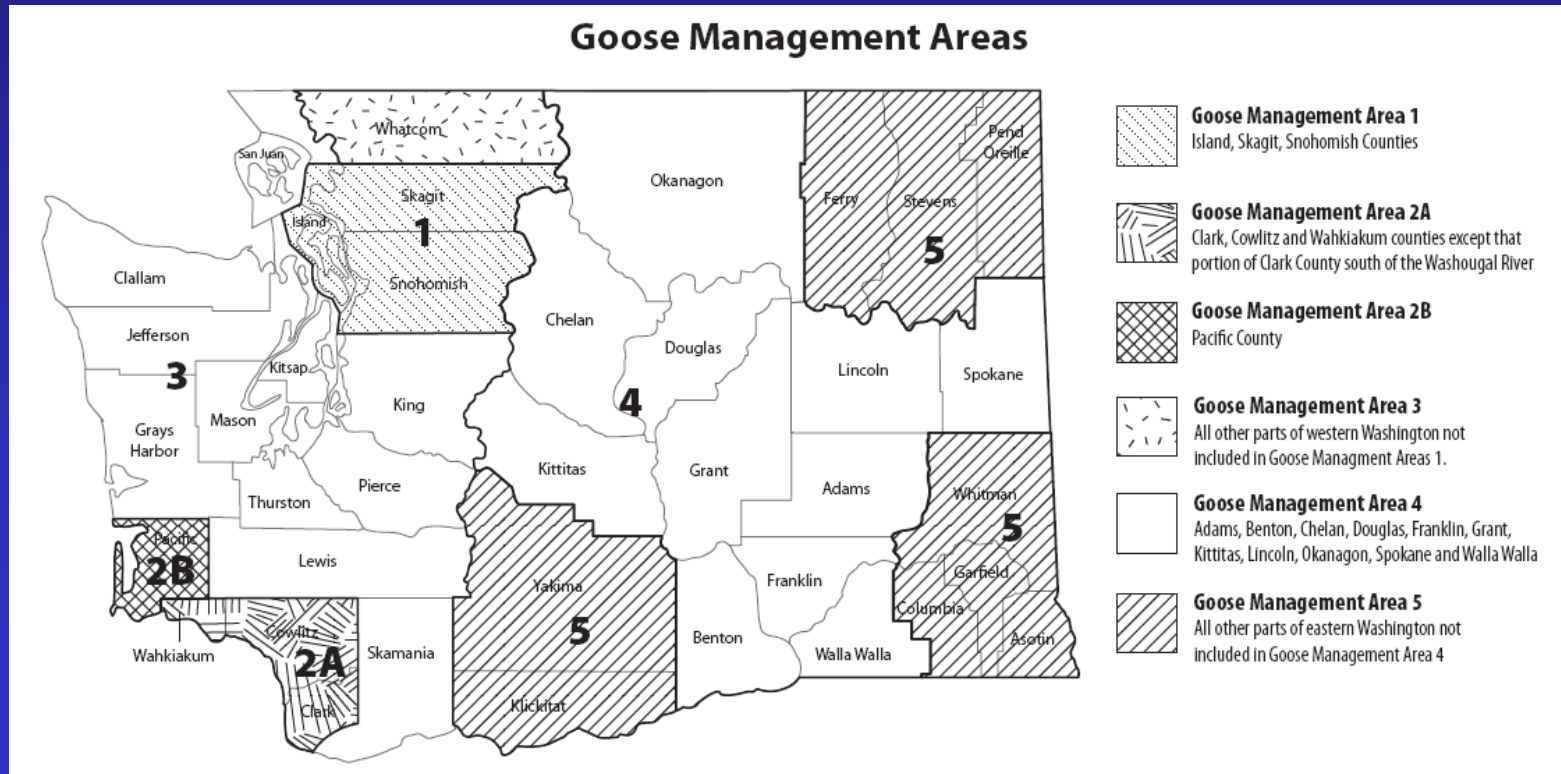
Goose Management Areas 2-5

- **Seasons similar to last year (pp. 4-8)**
- **Floor change (p. 8): GMA 5 – change Oct. 13-17 to Oct. 13-15 to comply with 107 day framework**



2012-13 Falconry Season Proposals

- **Floor change (p. 10): GMA 3-5 (falconry) - change Oct. 13-25 to Oct. 13-14 to comply with 107 day framework for geese**



QUESTIONS?



RCW 77.32.070

Information required from license applicants — Reports on taking/effort to harvest fish, shellfish, and wildlife — Administrative penalty.

(2) The commission may, by rule, set an administrative penalty for failure to comply with rules requiring the reporting of taking or effort to harvest wildlife. The commission may also adopt rules requiring hunters who have not reported for the previous license year to complete a report and pay the assessed administrative penalty before a new hunting license is issued.

(a) The total administrative penalty per hunter set by the commission must not exceed ten dollars.

WAC 232-28-299 Mandatory report of hunting activity.

- (1) All hunters purchasing a hunting license must report their hunting activity for deer, elk, bear, or turkey.
 - (a) Hunters must report hunting activity, for each tag and permit acquired, by January 31 or within 10 days after the close of an eligible hunt, whichever date is later.
 - (b) Reports must be made using the department's designated automated telephone hunter reporting system (toll free) or internet hunter reporting system.
 - (c) Any hunter not reporting, for each tag and permit acquired, by the reporting deadline will be in noncompliance of reporting requirements.
 - (d) Compliance will be credited for each transport tag and permit acquired.
- (2) As an incentive for prompt reporting, all hunters who report by midnight January 10 or within 10 days after the last day of their permit hunt will be entered into a drawing for special deer and elk incentive permits. To be eligible for the drawing, hunters must report their hunting activity for each transport tag and permit acquired.
- (3) Hunters who have not reported hunting activity by the reporting deadline for deer, elk, bear, or turkey tags and permits acquired the previous year will be required to pay a \$10 penalty before a new license that includes deer, elk, bear, or turkey tags will be issued. A hunter may only be penalized a maximum of \$10 during a license year.