

PROPOSED LAND TRANSACTIONS

TABLE OF CONTENTS

Decision Page.....		i
Easement Request	Rocky Ford Creek Access Area	
	Grant County	1
Hiways Map		1a
Wildlife Area Map		1b
Roads Map.....		1c
Aerial Map.....		1d

GREEN SHEET

Meeting/Workshop: August 17, 2012 Conference Call
Agenda Item: PROPOSED LAND TRANSACTION
Staff Contact: Dan Budd
Presenter: Dan Budd

Background:

The Department is recommending the following action:

The grant of an easement for a Transmission Line to Grant County Public Utility District No. 2

Policy issue(s) you are bringing to the Commission for consideration:

Addressing responsible property management while protecting critical fish and wildlife habitat and public recreational opportunity.

Public involvement process used and what you learned:

The route for the Columbia to Rocky Ford 230kV Transmission Line was chosen following a route study done in 2009 which considered socioeconomics, farming, biological resources, water resources, cultural resources, costs, future load growth and system reliability, operation and maintenance and real estate. Two public outreach meetings were held in 2009 to gather input from the public on route selection, and this route was selected as the preferred alternative route that follows an existing line corridor for 19.2 miles. A SEPA checklist was completed, and determination of non-significance was made by the PUD and published June 13-20, 2011 in the legal section of the Columbia Basin Herald under the SEPA Rule RCW 197-11-970 and an archaeological survey is currently being conducted. Signage was posted on site for public view prior to open public record hearing. WDFW has received no comments opposing the line crossing WDFW land.

Action requested (identify the specific Commission decisions you are seeking):

Approval of the proposed land transaction as presented.

Draft motion language:

Move to approve the proposed land transaction as presented.

Justification for Commission action:

This action will address responsible property management while protecting critical fish and wildlife habitat and public recreational opportunity.

**STATE OF WASHINGTON
DEPARTMENT OF FISH AND WILDLIFE
WILDLIFE PROGRAM
LANDS DIVISION
REAL ESTATE SERVICES**

August 17, 2012

TO: Philip Anderson
Director

FROM: Dan Budd
Real Estate Manager

SUBJECT: **ITEM 1: EASEMENT REQUEST – GRANT COUNTY P.U.D.
ROCKY FORD CREEK ACCESS AREA
GRANT COUNTY**

The Department of Fish and Wildlife (WDFW) has received a request from Public Utility District No. 2 of Grant County (PUD) for an easement for the construction, operation, and maintenance of a new 230 kV electric transmission line across property owned by WDFW in Grant County. The proposed route runs 30 miles from the Columbia River northwest of Quincy in Douglas County to the existing Rocky Ford Substation southeast of Ephrata in Grant County. The portion of the proposed line that crosses WDFW property is approximately one mile in length. It follows an existing PUD transmission line. The easement on WDFW's land will vary between 135 and 160 feet in width and is conditioned by a restoration plan that minimizes surface disturbance during construction and provides for restoration and monitoring after the construction phase. The total area under the proposed power line will be less than 13 acres.

Surrounding the proposed easement site is approximately 1,000 acres known as the Rocky Ford Access Area, which was purchased with state Aquatic Lands Enhancement Account (ALEA) funds to provide recreational opportunity at Rocky Ford Creek. The larger property is improved with a parking lot. It is used by anglers and other water recreationalists year-round. The proposed easement is not expected to affect recreational opportunity.

The PUD has offered \$9,081 as compensation for the easement, which WDFW believes is an appropriate value. Because the property was acquired with ALEA funds administered by the Recreation and Conservation Office, WDFW will be required to use these funds to purchase replacement land.

The Department recommends the Commission approve the grant of an electric transmission line easement to the Public Utility District No. 2 of Grant County over a 12.97-acre strip of Department land for \$9,081.

ITEM 1: PROPOSED EASEMENT - GRANT COUNTY PUD

COUNTY: GRANT COUNTY

LEGAL: SECTION 5, TOWNSHIP 20N, RANGE 27E, W.M.

ACRES: 13 ACRES

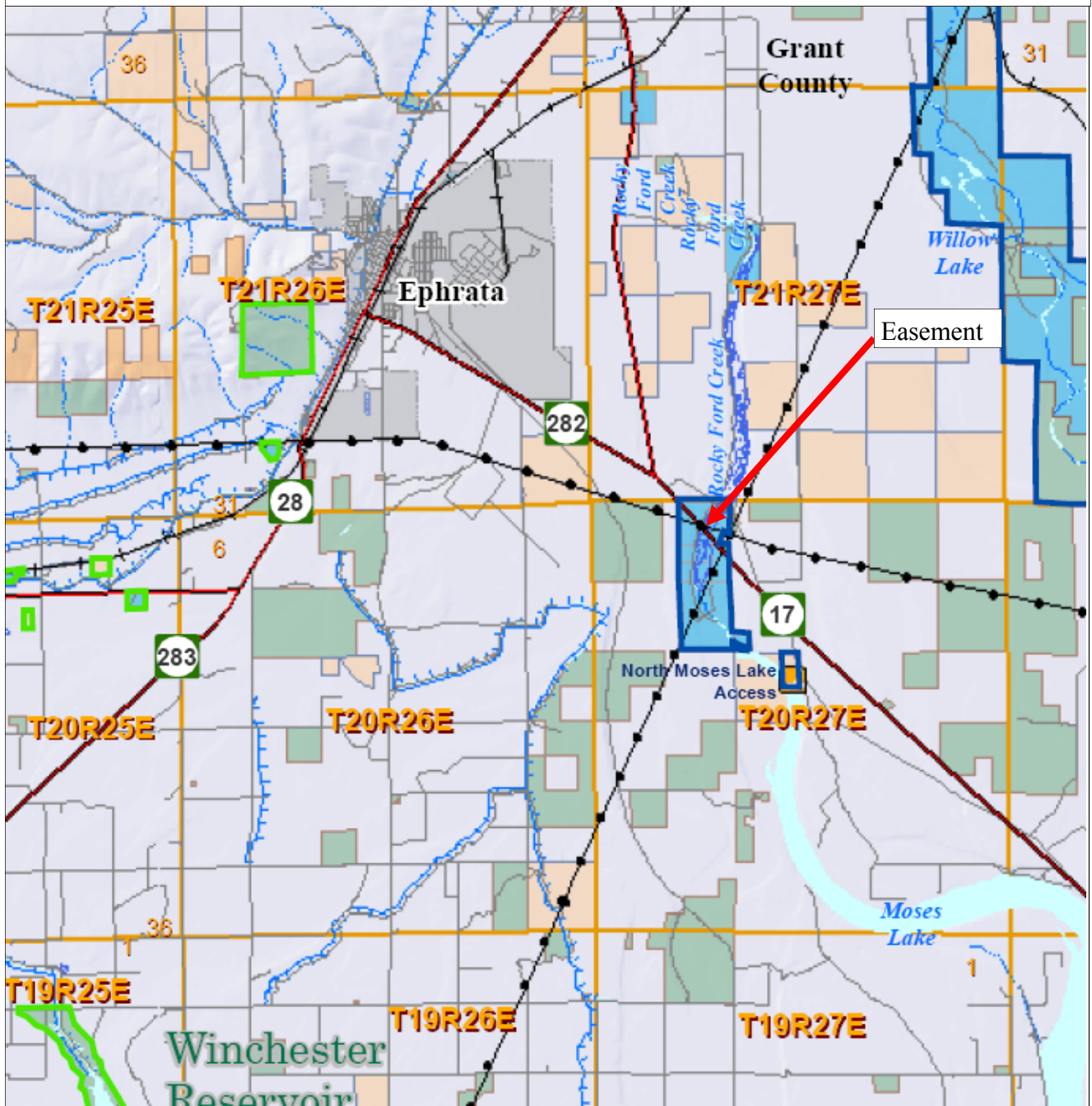


ITEM 1: PROPOSED EASEMENT - GRANT COUNTY PUD

COUNTY: GRANT COUNTY

LEGAL: SECTION 5, TOWNSHIP 20N, RANGE 27E, W.M.

ACRES: 13 ACRES

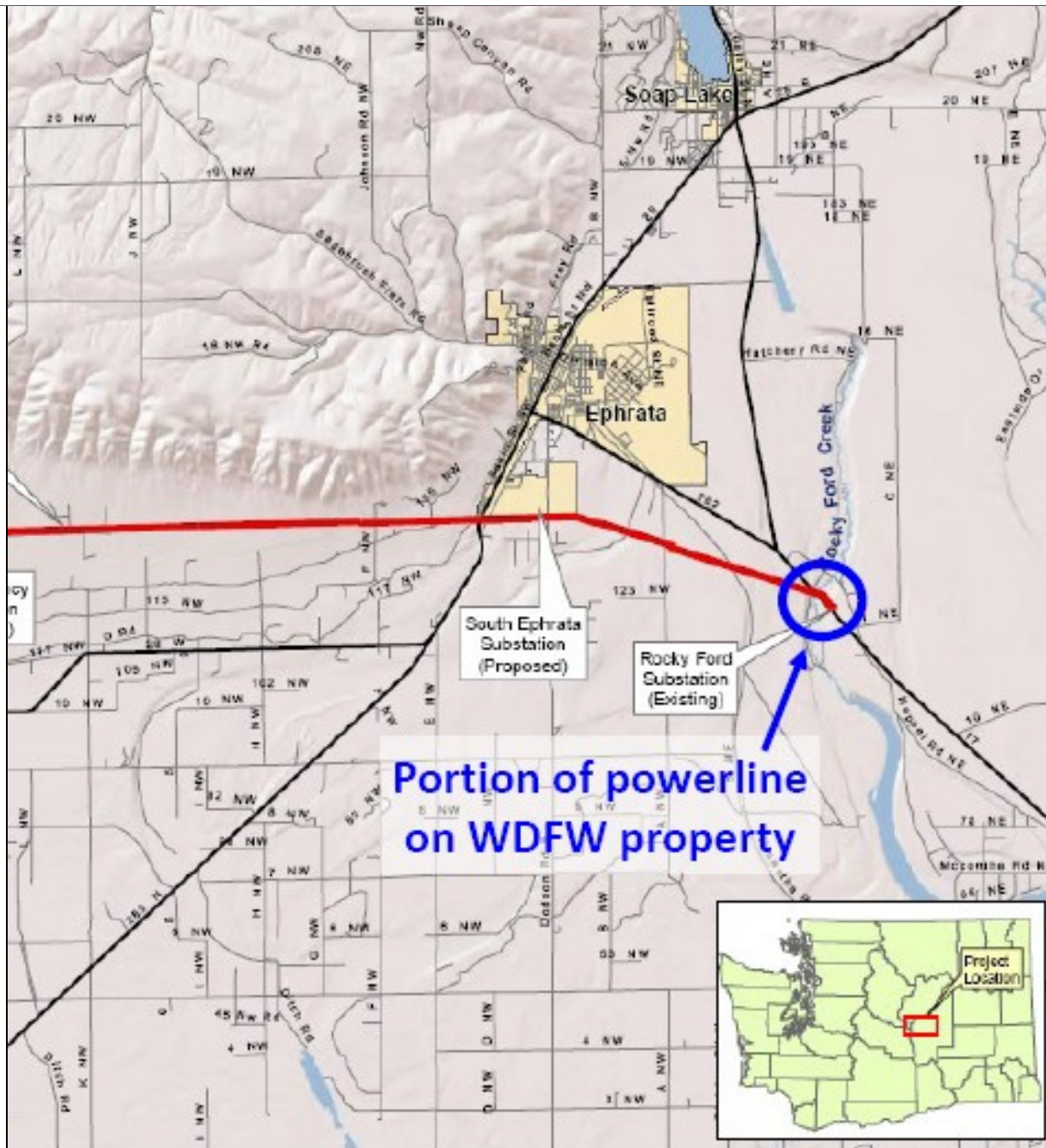


ITEM 1: PROPOSED EASEMENT - GRANT COUNTY PUD

COUNTY: GRANT COUNTY

LEGAL: SECTION 5, TOWNSHIP 20N, RANGE 27E, W.M.

ACRES: 13 ACRES



ITEM 1: PROPOSED EASEMENT - GRANT COUNTY PUD

COUNTY: GRANT COUNTY

LEGAL: SECTION 5, TOWNSHIP 20N, RANGE 27E, W.M.

ACRES: 13 ACRES

