

Agenda Item 11

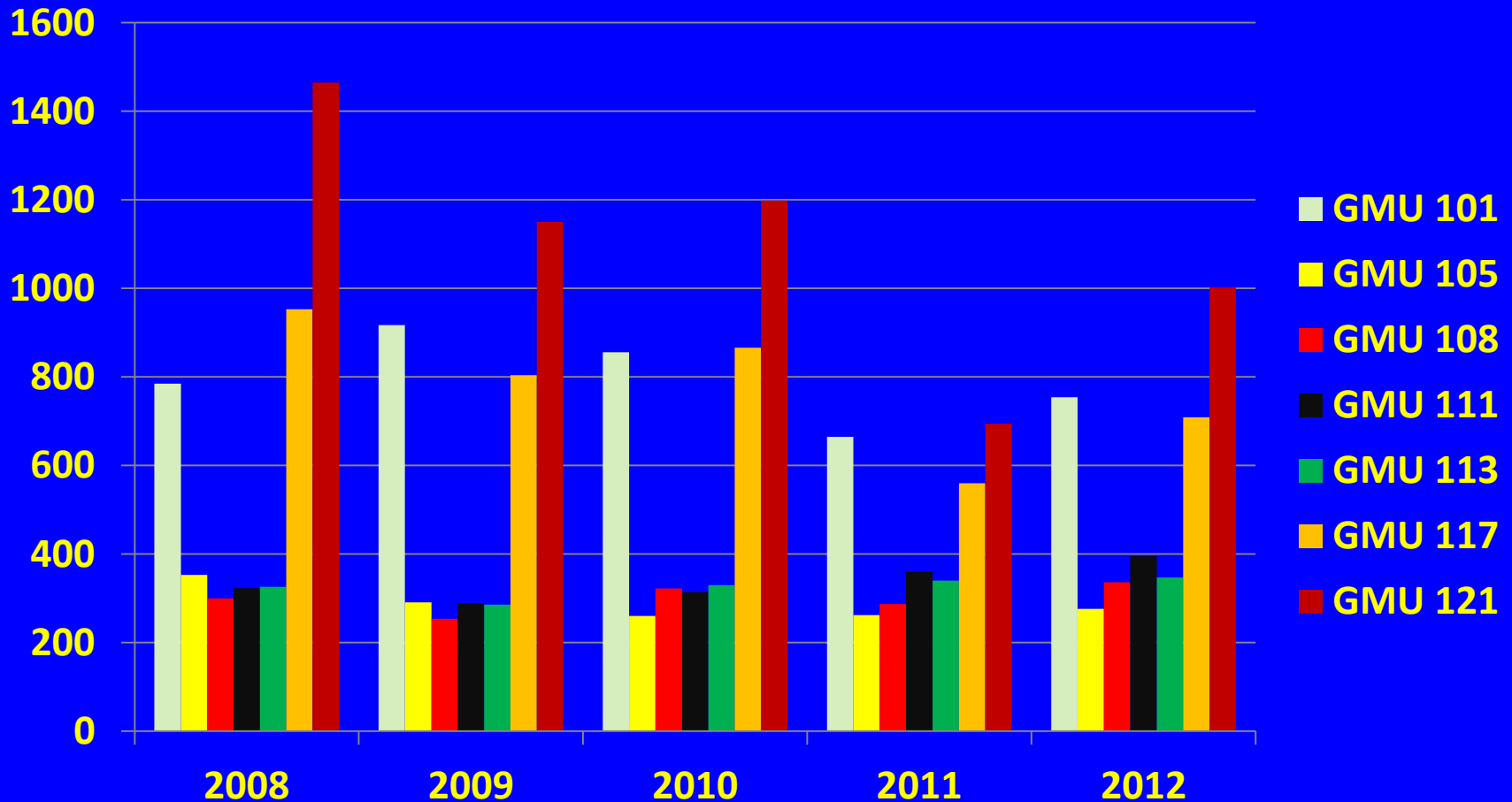
**2012 – 2014 Deer General Seasons
and
2013 Deer Special Permits
WAC 232-28-357
WAC 232-28-359
Briefing and Hearing**

Status of White-tailed Deer Populations

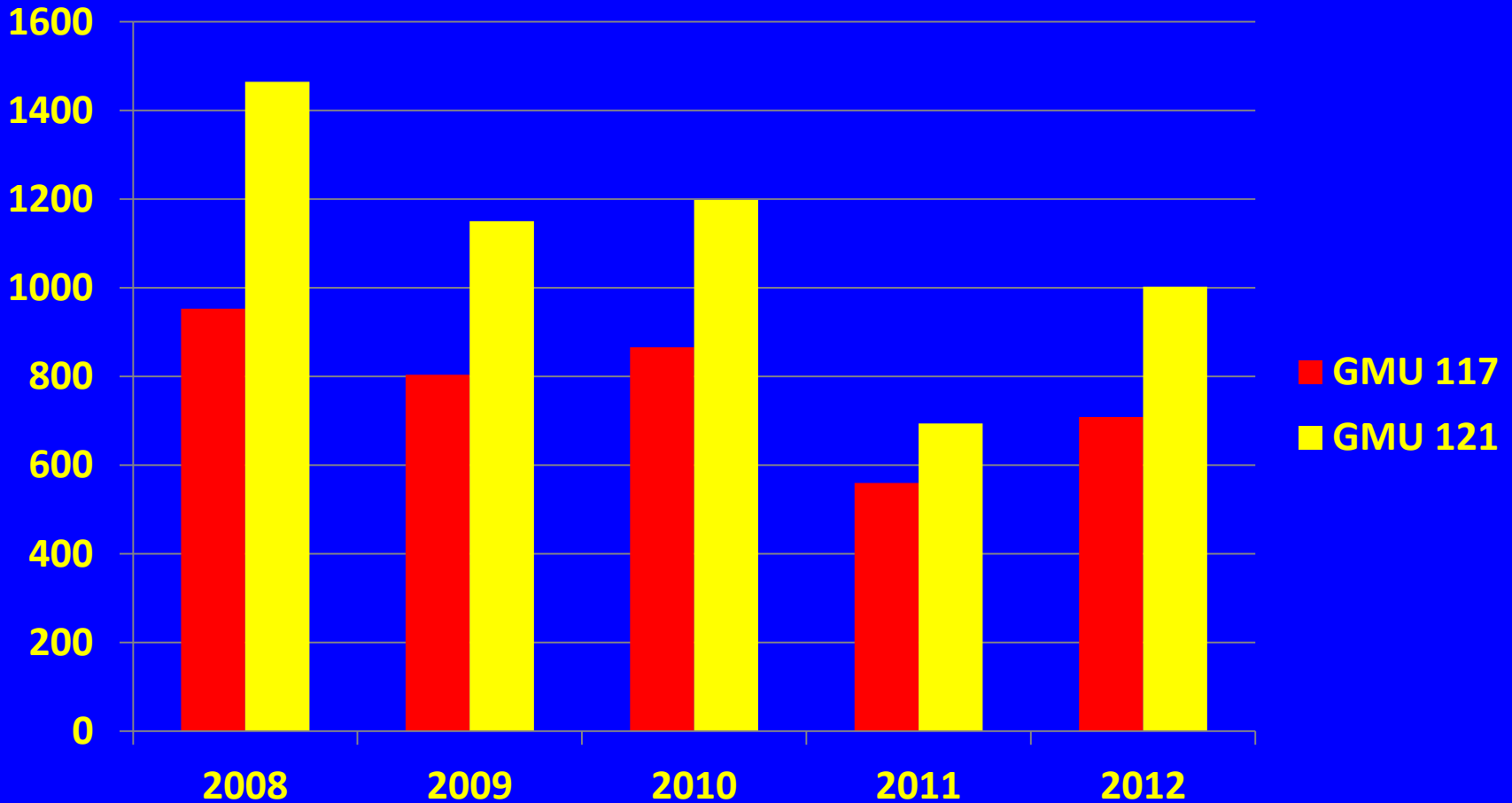
White-tailed Deer Zone	Status	Hunting Season
Selkirk	Prelim harvest data suggest slight increase.	Status Quo
Palouse	Stable	Status Quo
Blue Mountains	New estimates. First baseline.	Status Quo
Columbia Basin	Stable	Status Quo
North Cascades	Stable	Status Quo
Okanogan Highlands	Harvest Data	Status Quo

Transect	2003	2004	2005	2006	2007	2008	2009	2010	2011	2012
Flat Creek (105)	116	123	138	147	117	143	122	117	50	21
Douglas (108)	231	288	198	304	190	177	131	103	92	80
Deep Creek (108, 111)	38	42	48	54	84	79	78	51	23	22
Clayton (117)	95	58	51	83	97	61	48	38	38	82
Dunn Mountain (121)	189	213	192	165	161	106	42	103	117	205
Dasiy-Maud (121)	48	43	33	51	45	75	50	50	59	92
Deer Per Mile	9.8	10.5	9.0	11.0	9.5	8.8	6.4	6.3	5.2	6.9

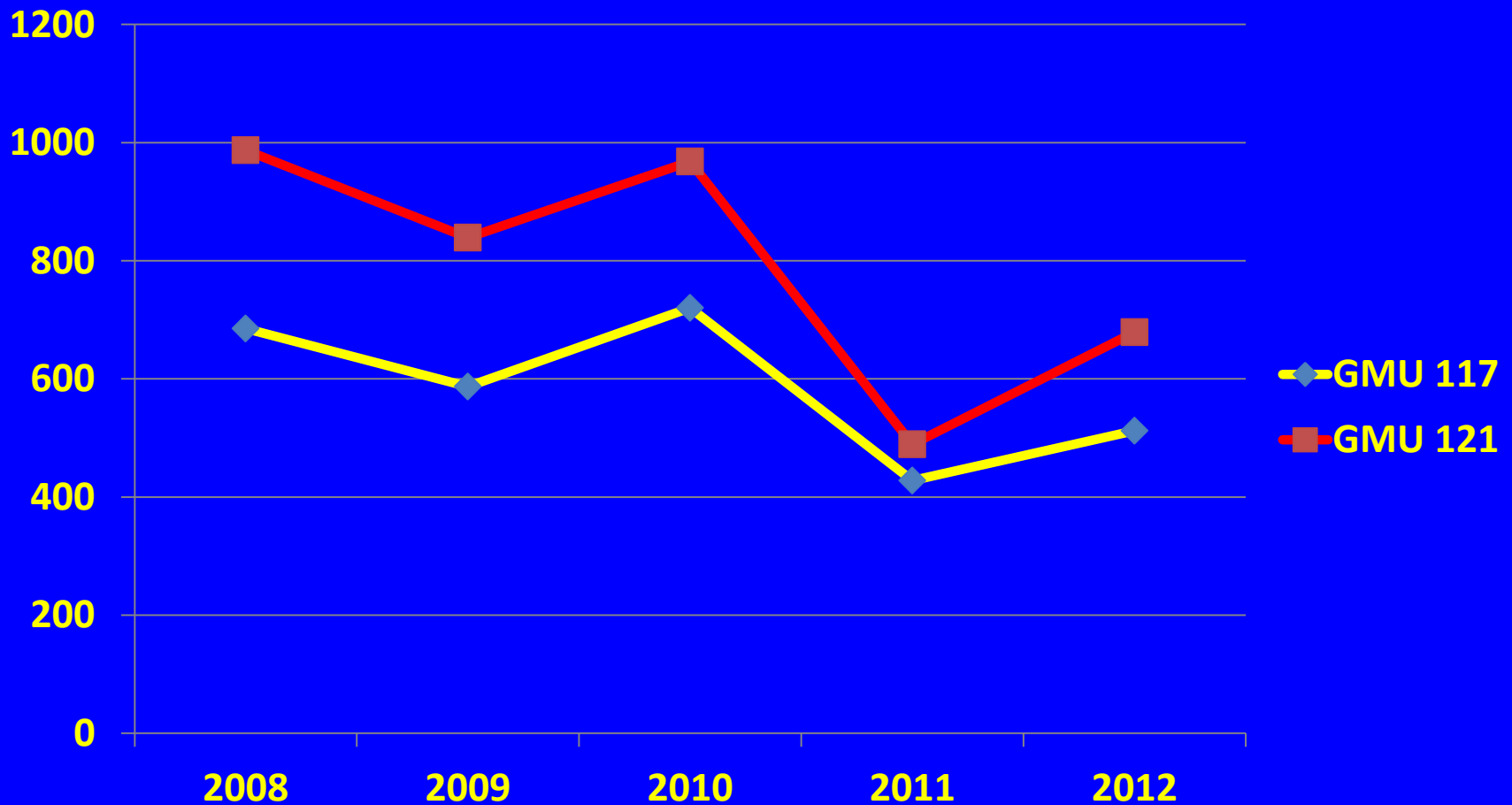
Raw Reported Deer Harvest



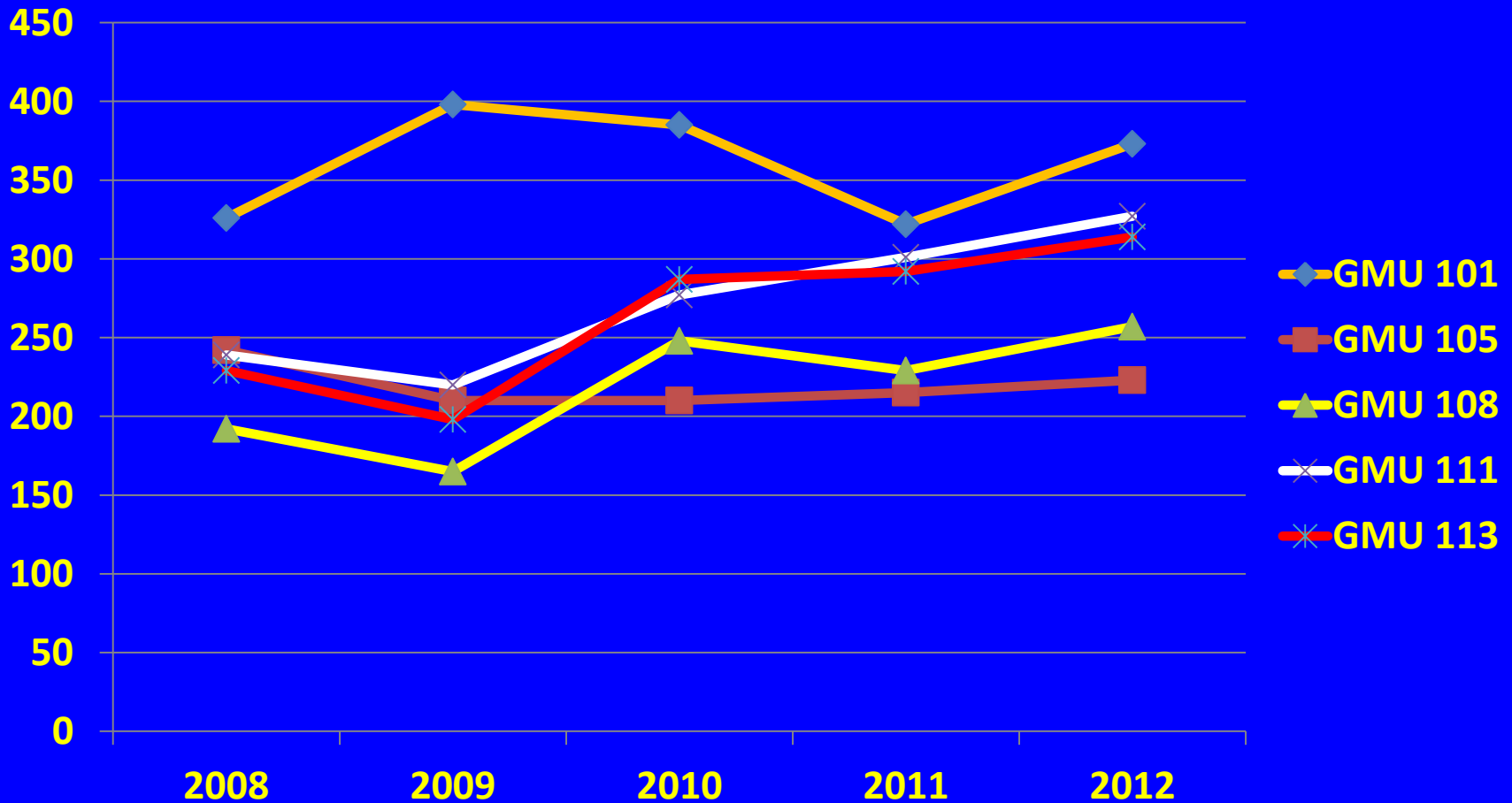
Raw Reported Deer Harvest



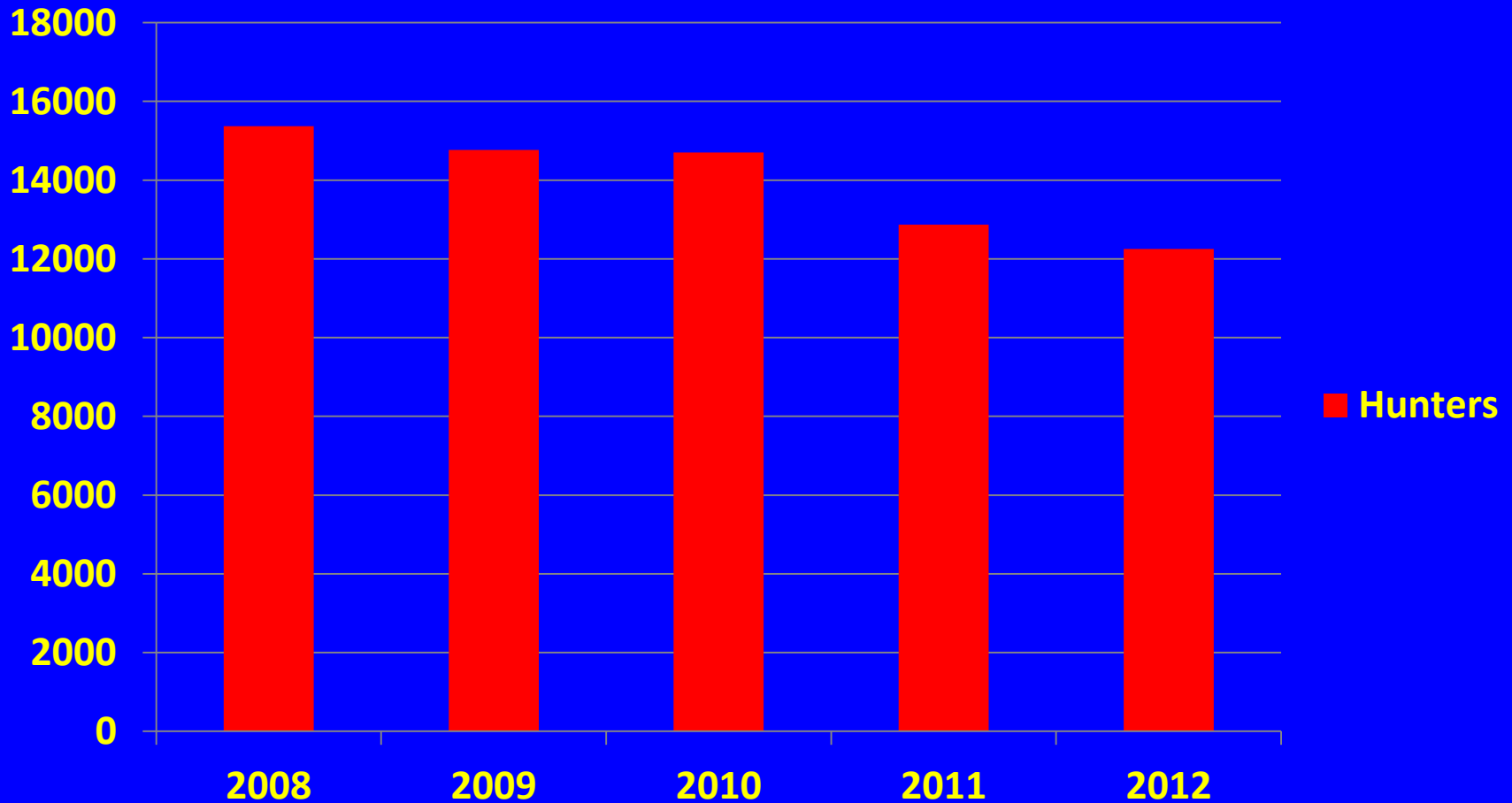
Raw Reported White-tailed Deer Buck Harvest



Raw Reported White-tailed Deer Buck Harvest

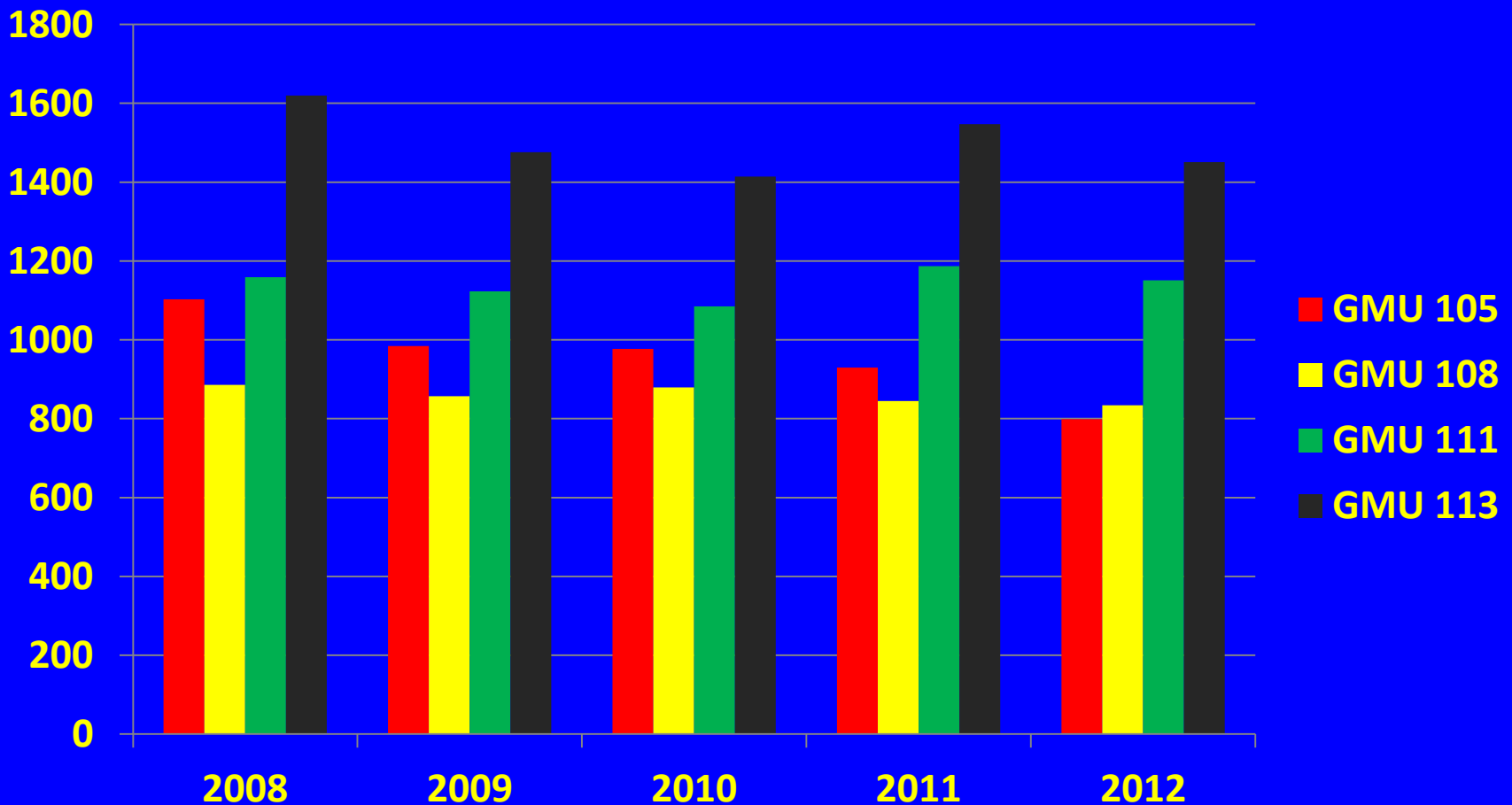


Raw Reported Hunter Numbers GMUs 101-121



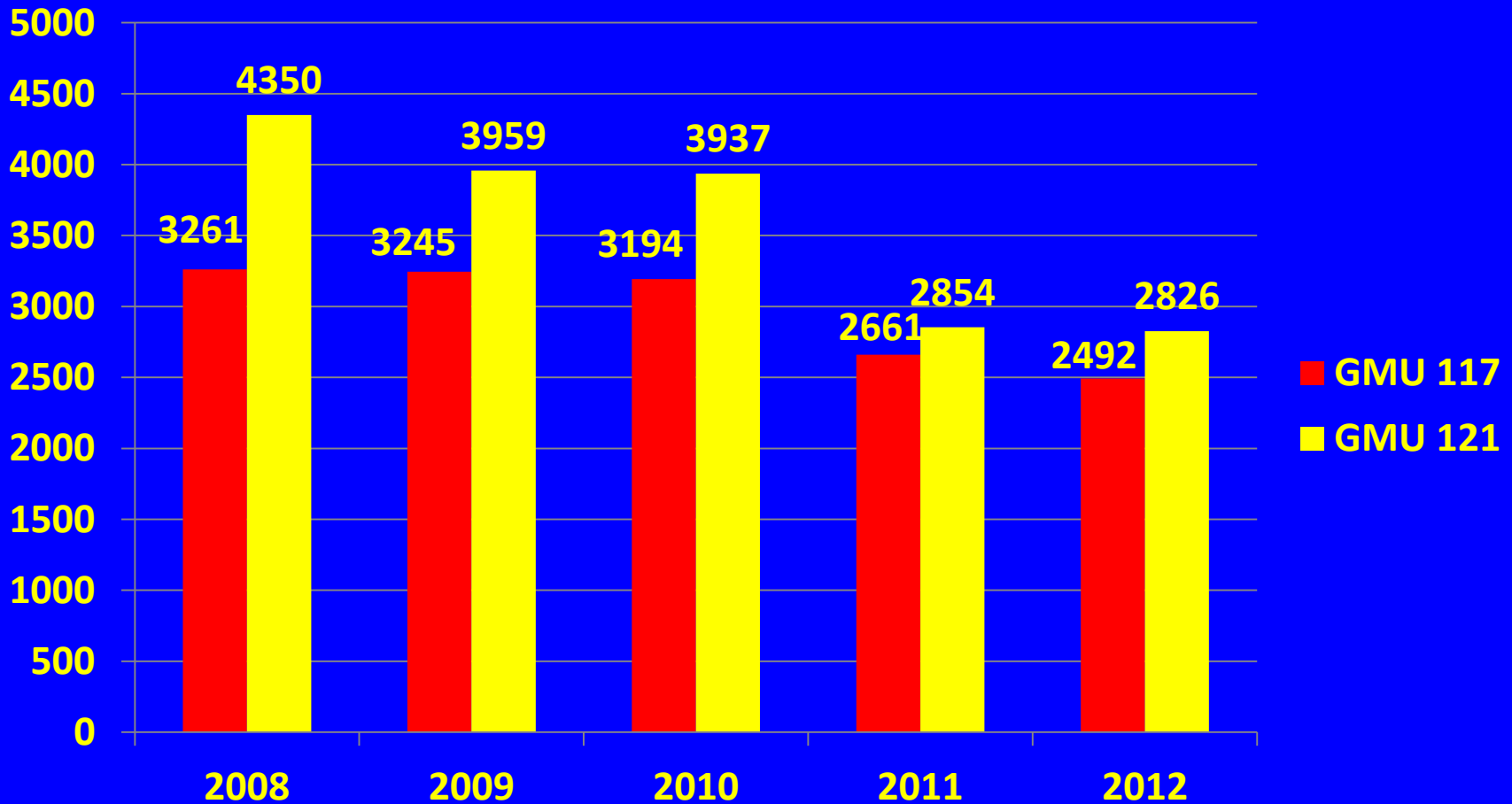
Raw Reported Hunter Numbers

GMUs 105, 108, 111, 113

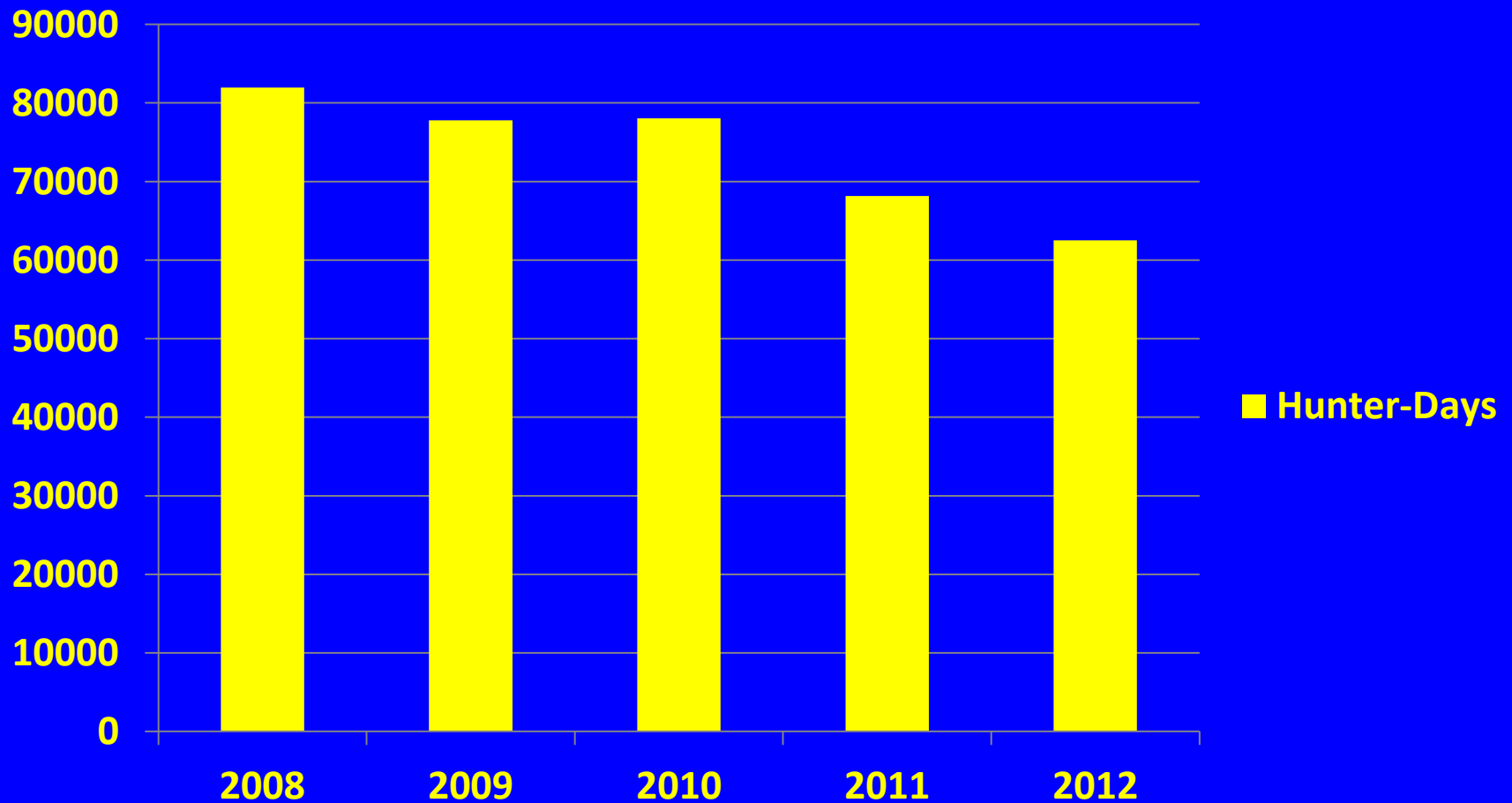


Raw Reported Hunter Numbers

GMUs 117, 121



Raw Reported Hunter Days GMUs 101-121



Status of Mule Deer Populations

Mule Deer Zone	Status	Hunting Season
Okanogan	Slight increase Methow Watershed Unable to fly Okanogan Watershed	Status Quo
Chelan	Unable to fly	Status Quo
Blue Mountains	New estimates. First baseline	Status Quo
Columbia Basin / Palouse	Phase II new coverage	Status Quo
Douglas	Increase	Status Quo
Central Cascades	Harvest data	Status Quo
North Half	Harvest data	Status Quo

Mule Deer

Location	Total	Post-hunt Bucks: 100 does	Fawns:100 does	
Methow	3,042	34	78	Air Composition Count
Douglas	1,255	23	65	Standardized Road Composition Count
Blue Mountains	3,355	23	47	Air Estimate

Status of Black-tailed Deer Populations

Black-tailed Deer Zone	Status	Hunting Season
Western Washington	Harvest Data	Status Quo
Klickitat MD and BTD	Slight Declines Balancing Population, Opportunity, and Damage Concerns	↓↑

Deer Season Recommendations

- **Status Quo for Most Seasons**
- **Initiate Seasons in “New” GMUs That Were Formerly Deer Area Islands**
- **Adjust $\uparrow\downarrow$ Special Permits via Special Permit Allocation Formula**
- **Adjust Antlerless Special Permits to Address Agricultural Damage Issues**
- **Adjust Special Permits in Response to Population Numbers**

Questions